

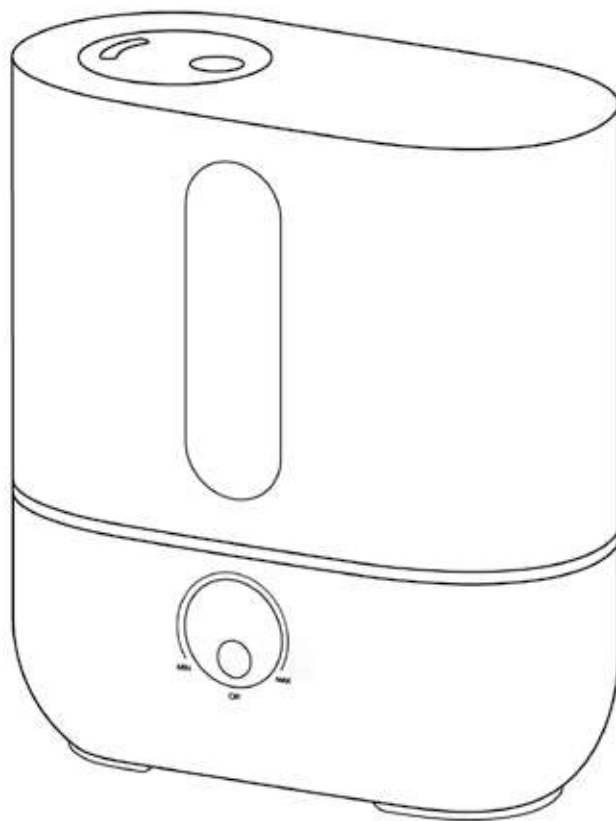
**PLEASE READ AND SAVE
ALL INSTRUCTIONS!**

**LISEZ ET CONSERVEZ
TOUTES LES INSTRUCTIONS!**

**¡POR FAVOR LEA Y
GUARDE TODAS
LAS INSTRUCCIONES!**

BONECO

healthy air



U200



Instructions for use (5 – 16)

en

Instructions d'utilisation (17 – 28)

fr

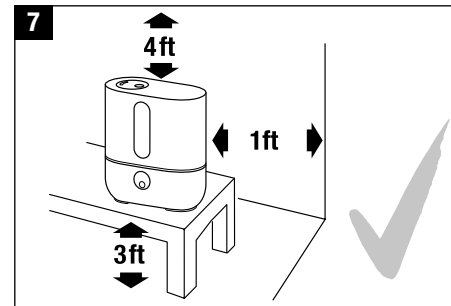
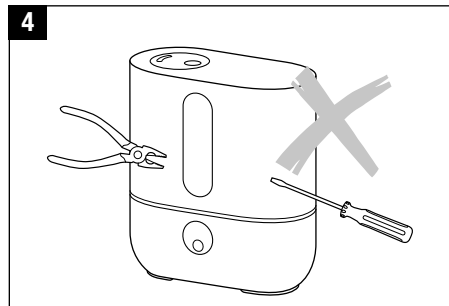
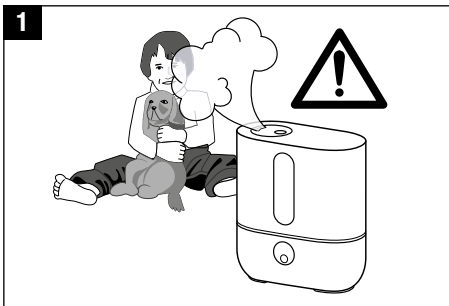
Instrucciones para el uso (29 – 40)

es

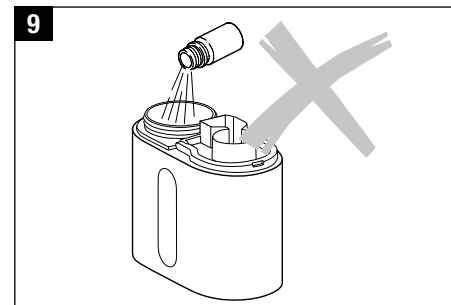
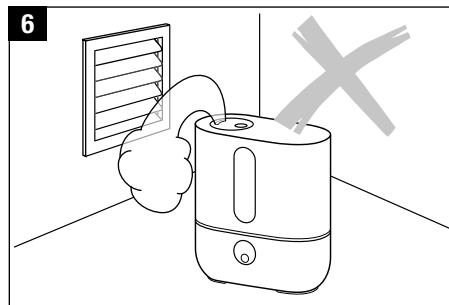
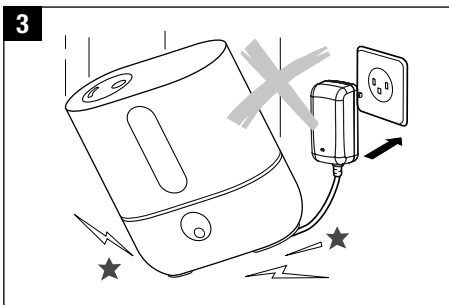
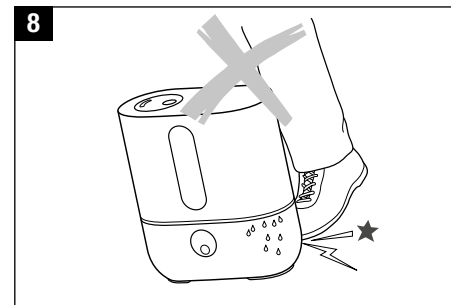
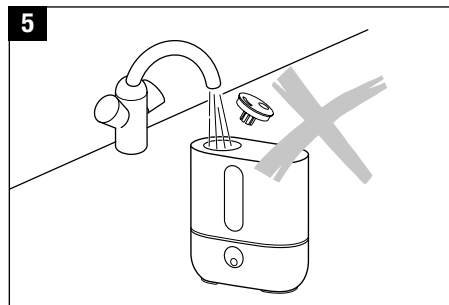
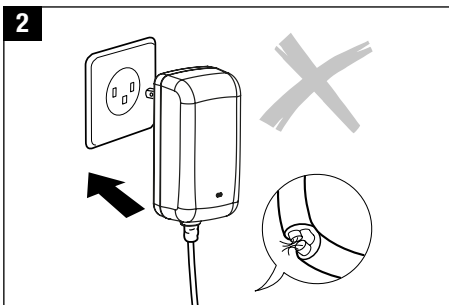
PLEASE READ AND SAVE ALL THESE INSTRUCTIONS!

Important safety instructions

- Prior to using the appliance, read through the instructions for complete use and retain in a safe place for later reference.
- **WARNING** – Only use the Ultrasonic indoors and within the specified technical data. Improper use can be hazardous for the health and lead to critical injury.
- This appliance is not to be used by persons (including children) with impaired physical, sensory or mental capacities or insufficient experience and knowledge, unless they are supervised by someone who is responsible for their safety or given assistance with the use of this appliance. Children should be supervised to ensure that they do not play with the appliance (fig. 1).
- Use only the original adapter provided for operating the unit. The adapter provided may not be used for other units.
- Never use the appliance if there is any damage to the appliance or cable (2), after malfunction, after the appliance has been dropped (3) or damaged in any other way.
- Only operate the appliance when it is completely assembled.
- Repairs of electrical appliances are only to be made by qualified service engineers (4). Improper repair work can cause considerable danger to the user.
- Do not pour water into the mist outlet of the appliance (5).
- Place the humidifier on a dry, level surface.
- Do not place the appliance directly on the floor, next to a heating vent or in the vicinity of electrical equipment. If the released mist reaches the floor or objects before it has fully evaporated, it may cause damage to them (6).
- The unit should be placed in an elevated position (7), e.g. on a table, chest of drawers, etc.
- **ALWAYS** unplug before removing/filling/emptying the water tank, before cleaning/maintaining, assembling/dismantling of individual parts and before moving the appliance.
- Never pull the plug from the outlet by the cable or with wet hands.
- Do not touch the water in the base during operation because of high frequency vibrations in the water.
- Do not submerge the main body in water or other liquids (25).
- Place appliance where it is not easily knocked over (8).
- Always unplug when not in use.
- Do not run power cords under carpets, and do not cover with throw rugs. Arrange cord so that it will not be tripped over.
- Do not use the appliance where combustible gases or vapors are present.
- Do not expose the appliance to rain, or use near water, in a bathroom, laundry area or other damp location.
- This unit must be used in its upright position.
- Do not allow foreign objects to enter ventilation or exhaust opening as this may cause electric shock or damage to the appliance. Do not block air outlets or intakes.
- This appliance has a polarized plug (one blade is wider than the other). To reduce risk of shock, this plug is intended to fit in a polarized outlet only one way. If the plug does not fit fully in the outlet, reverse the plug. If it still does not fit, contact a qualified electrician. **DO NOT** attempt to defeat this safety feature.
- A loose fit between the plug (receptacle) and the AC outlet may cause overheating and a distortion of the plug. Contact a qualified electrician to replace loose or worn receptacles.
- Do not sit, stand or place any heavy objects on the appliance.
- Disconnect power supply before servicing.
- To protect **health safety** and **proper humidifier** function use only clean, contamination-free, cold, fresh tap water in your humidifier. If your water source is contaminated or if you are uncertain of its safety use distilled water. In addition, it is advised to **clean and maintain your humidifier** in a timely manner **as instructed in this manual**.
- When fragrancing the air, use the fragrance container provided (also see section “Use of fragrances”). Do not add any additives such as essential oils directly into the water tank or the water base (9). These additives will damage your appliance! Appliances that are damaged by additives are excluded from the warranty.
- The appliance does not have an integrated hygrostat. Use an external hygrostat to avoid damage through over-humidification.
- Remark: Neither humans nor animals can hear the high frequency vibrations.
- The manufacturer rejects all liability for damage caused by nonobservance of these instructions for use.



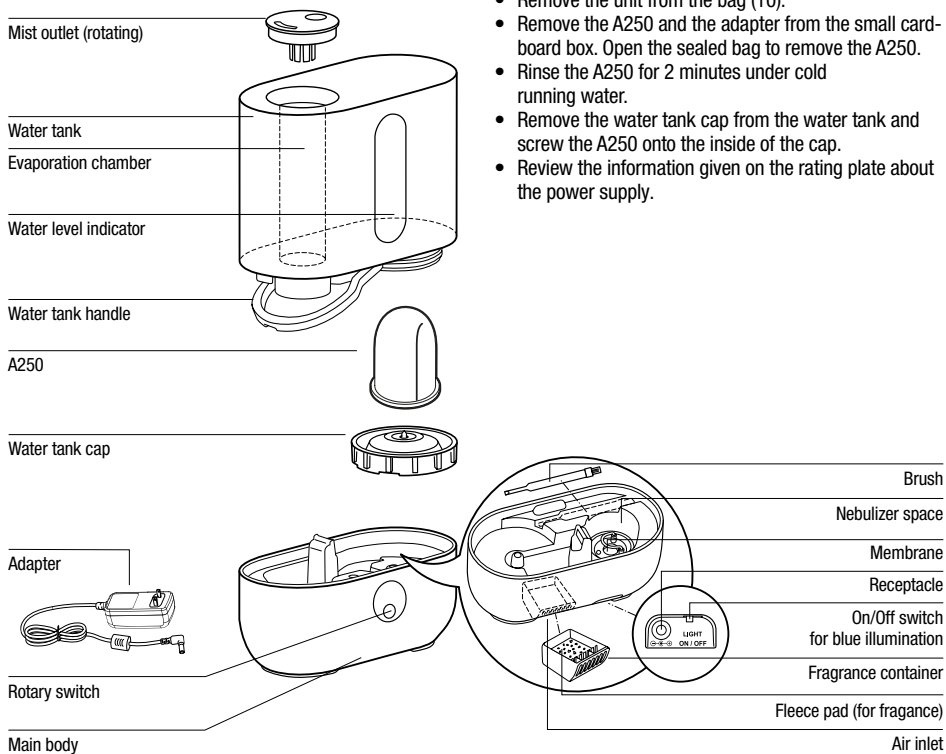
en



Foreword

Congratulations on choosing the Ultrasonic Humidifier U200!

Description of the appliance/ Scope of delivery



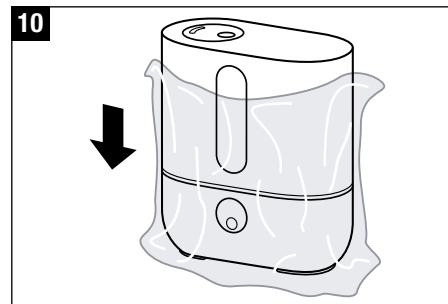
Proper use:

The appliance must only be used for the humidification of the air indoors.

Unpacking

- Carefully remove the unit from its box.
- Remove the unit from the bag (10).
- Remove the A250 and the adapter from the small cardboard box. Open the sealed bag to remove the A250.
- Rinse the A250 for 2 minutes under cold running water.
- Remove the water tank cap from the water tank and screw the A250 onto the inside of the cap.
- Review the information given on the rating plate about the power supply.

10



Putting into operation

- Do not place the humidifier directly next to a heating vent or on a floor with floor heating. The moisture of the mist can damage the floor surface (6) (see Safety Instructions).
- The unit should be placed in an elevated position (7), e.g. on a table, chest, etc. at least 3 ft off the floor.
- The mist outlet must not be pointed directly at plants, furniture, or other objects (12). Keep distance of at least 20 inches (50 cm).
- Please observe the accompanying instructions for starting the A250.
- Read the instructions under "Filling the tank" for filling the water tank.
- Place the water tank onto the base (15).
- Connect the adapter to the unit and the electrical socket and switch on the unit using the rotary switch (16).
- The appliance will reach full capacity about 10 to 15 minutes after being switched on.
- Make sure that the power cord is not pinched anywhere. Do not operate the appliance if the cord is damaged (2).

Filling the tank



Always switch off the appliance before removing the water tank. Do not reach inside the nebulizer space while the appliance is running!



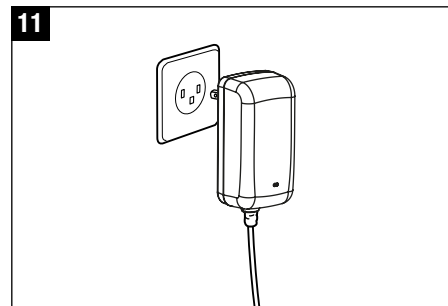
To protect **health safety** and **proper humidifier function** use only clean, contamination-free, cold, fresh tap water in your humidifier. If your water source is contaminated or if you are uncertain of its safety use distilled water.



Do not operate the appliance when the water tank is empty! When the water reaches the minimum level, the unit switches off automatically.

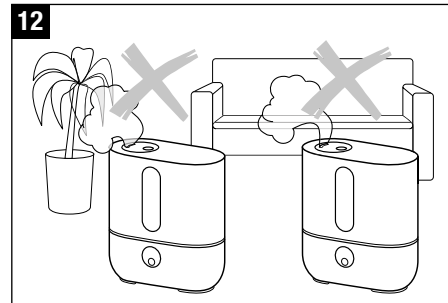
- Make sure that there are no foreign objects inside the water tank.
- Remove the water tank cap from the tank (13). Fill the tank with clean, cold tap water (14). Close the cap of the water tank securely! Place the water tank onto the base (15). Do not add any additives to the water!
- Connect the adapter to the unit and the electrical socket and switch on the unit using the rotary switch (16). The empty indicator light may stay illuminated for some seconds until the base is filled with water.

11

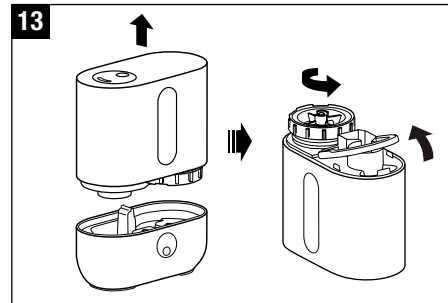


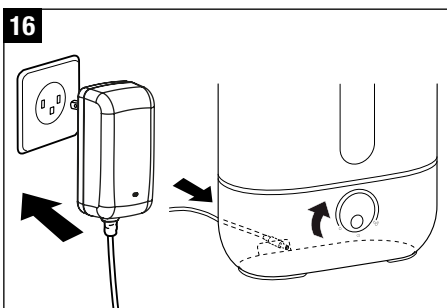
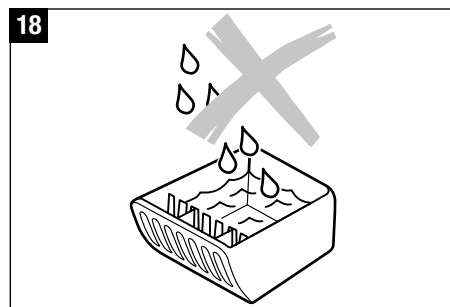
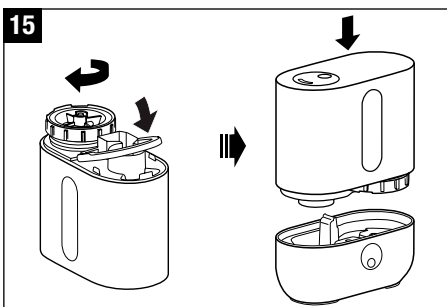
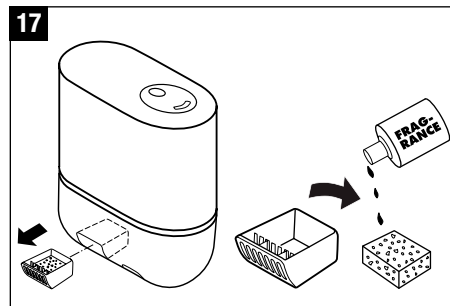
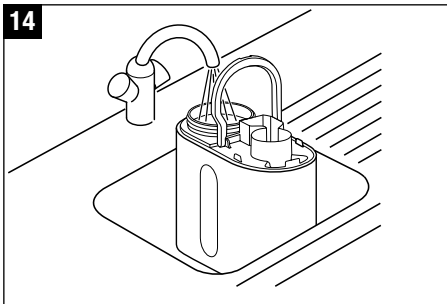
en

12



13





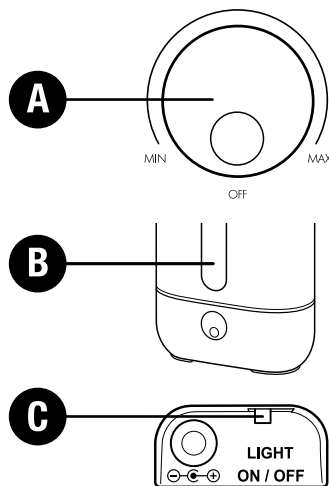
Use of fragrances

On the outside of the main body is a fragrance container (17). Remove the fragrance container by pushing it briefly. Fragrances can be dribbled onto the fleece pad in the container. A few drops are sufficient – liquid must not be present in the container. Apply fragrances only onto the fleece pad or a cotton-wool pad and never add directly to the container (18)! Water additives (e.g. etheric oils, fragrances, water purifiers) must NOT be added to the water tank or directly into the nebulizer space! Even a small amount can damage the plastic of these parts or create cracks. Appliances that are damaged by additives are not covered by the warranty.



Remove the fragrance container before emptying and cleaning the appliance.

Operation



A) On-off switch and regulation of mist output

Turning the rotary switch clockwise switches the appliance on and at the same time regulates the mist output from low to high.

B) Water level indicator

The water level indicator clearly shows how much water is in the appliance. The appliance switches off automatically when the water tank is empty. The water level indicator illuminates red. For further information please read the section "Filling the tank". After inserting the full tank, it may take a few seconds until the red light goes out.

C) Switching blue illumination on/off

The blue illumination can be switched on and off with the sliding switch on the backside of the main body. The red illumination cannot be switched off.

Cleaning/Maintenance



Always switch the appliance off before removing the water tank. Do not reach inside the nebulizer space while the appliance is running!



EZCal and EZCal PRO are the only recommended cleaning and descaling solutions. Do NOT use any other cleaning solutions since it can damage the product. Any use of cleaning solutions apart from EZCal and EZCal PRO will void the warranty.



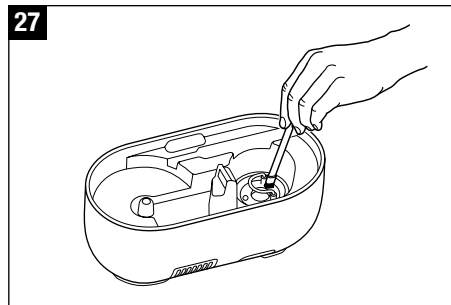
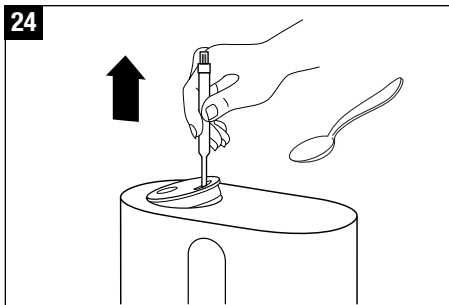
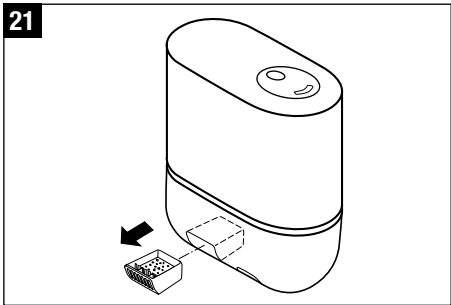
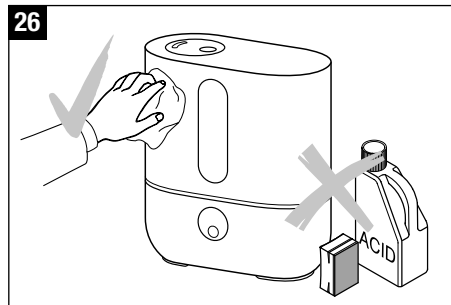
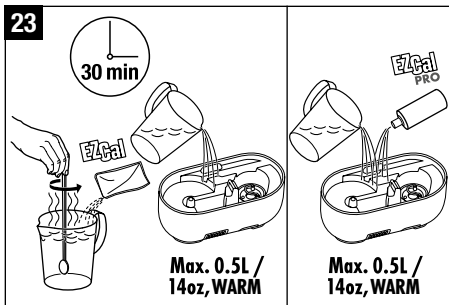
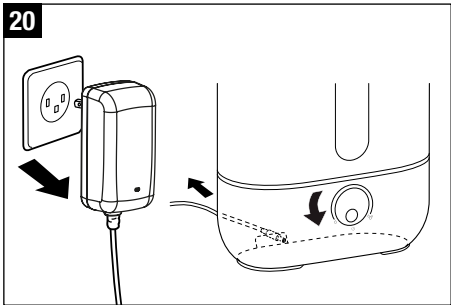
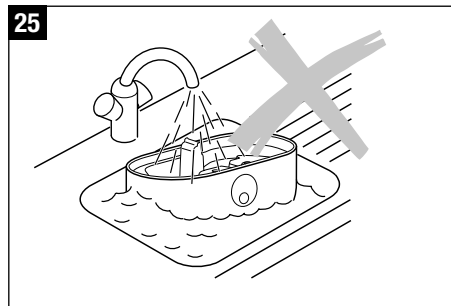
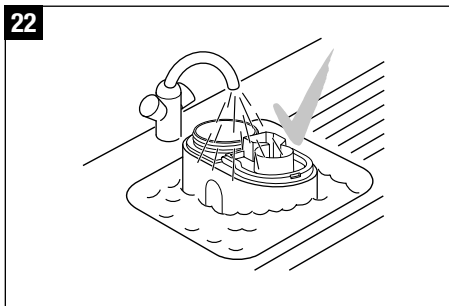
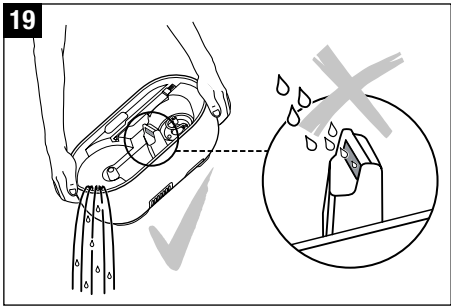
Caution: water must not be allowed to enter the ventilation opening! This will damage the appliance (19).

Caution – risk of electric shock and damage of the product!

- Switch the appliance off and unplug the adapter from the appliance (20).
- Remove the fragrance container by pressing it briefly (21).
- Clean the water tank and the nebulizer space regularly once a week (22/27).
- Use EZCal and EZCal PRO custom cleaning and descaling agents only to remove deposits from the membrane regularly (23). There is a sample of EZCal included in the packaging of your humidifier. Instructions for using are on the packet. Only use 1 packet for 32 oz of water. Do not change the ratio. Do NOT run the unit when using EZCal and EZCal PRO. This can cause damage to the product and voids the warranty. Thoroughly rinse the base with tap water after using EZCal and EZCal PRO and make sure no EZCal and EZCal PRO residue remains in the base.
- Removing the mist outlet (24): use either the brush or a spoon to lift the mist outlet through the opening to remove it.

Important

- Make sure that no water gets into the lower part of the main body (25).
- Clean the inner parts with a soft cloth. Never use any solvents or aggressive cleaning agents (26).
- Only use the brush to clean the membrane (27). This should be done once a week.
- Change the water in the tank at least every 2 days.



Troubleshooting

Problem	Possible cause	What to do
Unit does not operate	Appliance has no power	Connect appliance to power socket
	No water in the tank (Red water level indicator is illuminated)	Fill tank with water
No mist output	Mist output setting too low	Increase mist output
	Residue of cleaning agent	Rinse with clear water
Weak mist output	Mineral deposits on membrane	Clean membrane
White deposit around the humidifier	A250 exhausted	Replace A250

Storing the appliance for extended periods

Clean the appliance as described earlier and allow to dry thoroughly. Preferably store the appliance in its original box, in a dry place away from high temperatures.

Legal notice

The AC/DC adapter is cUL-listed.

Subject to technical change. The instructions for use are protected by copyright © BONECO AG.

Accessories

Contact your local retailer or check our website www.boneco.us for reorder information.

Customer Service

Customer Service (USA) 1-800-336-0326
www.boneco.us

Technical data

Electrical voltage	100 – 240 V / 50/60 Hz
Power consumption up to	20 W
Humidity output up to	1.9 gallons / 24h (7.2 L / 24h)
Suitable for rooms up to	430 sq ft (40 m ²)
Dimensions (LxWxH)	9.5 x 4.7 x 10.4 inches (24 x 12 x 26.3 cm)
Weight (empty)	4 lbs (1.8 kg)
Operating noise level	< 30 dB(A)
Accessories	A250 Hydro Cell A200 EZCal A7417 EZCal PRO A100

General Humidifier Questions

Q. Why isn't there enough moisture in my room?

A. How often do you run the unit? If the unit is only run at night, then during the day the moisture level will drop if moisture is not constantly added to the air.

Q. Do you leave your door open or closed when the unit is running?

- A. a) By leaving the door open, this allows moisture to leave the room and go into other areas of the house. If you would like the moisture to stay within one specific room you should consider closing the door while the unit is running.
- b) Wood, leather, carpet, curtains, and other types of fabric soak up a lot of moisture, thus not leaving enough moisture for the air. If the window is left open, then this allows moisture to escape the room. Another factor is a lot of times the unit is placed next to a heating device. The idea is that the air blowing into the room will quickly place moisture around the room. Unfortunately, this concept does not work because the hot air coming out of a vent will soak up most of the moisture, and none of the air within the room will receive any.

Q. How much moisture do I need in my room?

A. Suggested humidity levels are between 40 – 60%.

Q. What are the effects of too little or too much humidity?

A. Dry air can cause dry skin, static electricity, out of tune musical instruments, increased levels of dust (dry air causes dust to rise), damage to wooden objects (dry out and eventually cracks appear), discomfort, sickness, and dries out nasal membranes. Over-humidifying the air can cause mold and wallpaper to peel.

Q. Why do I need a humidifier when I can just open my window?

A. The moisture level within the outside air is not high enough to humidify a room. The colder the air the less moisture it is capable to hold, and the more the air is heated up the percentage of relative humidity is lower. Relative humidity means the amount of water vapor in the air, compared to the amount the air could hold if it was totally saturated. The difference is higher between outside and inside temperatures; more humidification is needed because of the dry air in the room.

Q. Where should I place my humidifier?

A. The unit should be free-standing and not close to a wall, window, door, or thermal bridge so that air may circulate around the unit.

Ultrasonic Frequent Questions

Q. There is no fill-line on the water tank, how far may I fill it up?

A. There is no fill line on the water tank, and it may be filled all the way to the top.

Q. Is it ok to use distilled water with the unit?

A. For best results with your ultrasonic humidifier use distilled or reverse-osmosis water.

Q. The directions tell me not to place the unit directly on the floor, why do I have to elevate the unit?

A. The idea with this unit is to allow one to force humidity into the air. Because of this, the carpeting or wood floor surrounding the unit may become damp. If the unit is placed at least 3 feet off the floor, the mist will have the opportunity to evaporate before hitting the floor.

Q. Water does not go into the tank.

A. In order to fill the tank, it must be turned upside down. The cartridge is placed on the water tank cap. Do not pour water in the tube which is the mist outlet.

Q. White dust is emitted from the unit

A. White dust particles are minerals that are broken up in tiny pieces by the ultrasonic process.

Solve the problem:

- Don't use water from a pre-installed water softener, or sodium instead of calcium will be emitted from the unit. Use distilled water instead.
- For very hard water areas use only distilled water.
- Use Reverse-Osmosis water (R-O water) instead of distilled water.
- Replace A250 filter

Q. Humidity level is not changing or does not reach the desired humidity level.

A. If the water tank needs refilling more than once per day, the unit is working properly and the climatic condition in the room has an influence on the humidity.

Reasons for low humidity level:

- air circulation is very high (air is fully exchanged several times per day – the humidifier needs to start its work from scratch)
- insulation of home (see air circulation)
- open space with high ceilings (not only the footage of the room counts but also the height) – high-rise buildings require more humidification.
- open windows – works similar to air circulation (if it is very cold outside don't open the window more than 2 times per day for 3 minutes)
- big difference between outside temperature and inside temperature – the colder the air the less moisture it is capable to hold and the more the air is heated up the lower is the percentage of relative humidity (=the amount of water vapor in the air, compared to the amount the air could hold if it was totally saturated)
- position of the unit - if it is placed close to a door, window or air vent. This increases the air circulation.

Q. Tank is leaking

A. Check if there are any hairline cracks. Dropped units or water tanks that are cracked will not be covered under the warranty. Please contact the retailer where the unit was purchased from in case your unit arrives damaged.

Q. Placing the face in the mist

A. It is not recommended that anybody places their face in the mist. It is an electrical product and should not be played with.

Q. No mist / unit is not working / empty indicator keeps flashing

A. Fill up the water tank. Check if water is flowing through the A250 (attached to the water tank cap). If the water tank is full but there is only little water in the base it indicates that the water is now flowing through the A250.

- Wait for 15 minutes to allow the mist to come out of the unit.
- If the empty indicator keeps flashing and the tank is full, the water is not flowing through the cartridge. Exchange the A250 after 2-6 months, in areas with hard water exchange the cartridge after 1-2 months. However, the A250 must be exchanged at the latest after 6 months or the unit does not reach its full performance anymore.

Q. Water tank cap is too tight to unscrew

A. This could be a cause of the air pressure within the water tank. Depress the spring on the bottom of the water tank cap to release air from the water tank. Continue to do this until you are able to unscrew the water tank cap.

Accessories**Q. Do I need to keep any parts before I replace the A250?**

A. Yes, always keep the water tank cap (this is the piece that attaches the A250 to the water tank).

Q. What is the Hydro Cell and how long is it good for?*

A. The Hydro Cell keeps humidifiers operating at their highest level between recommended cleanings. Good for approximately one to two months, depending on the water quality, the Hydro Cell ensures the humidifier's functionality while providing fresh humidification performance. It needs to be replaced every one to two months*.

* Depending on the water quality

** Optional Accessory

Q. What is EZCal and EZCal PRO?

A. There is a sample packet of EZCal included in the packaging of your humidifier. EZCal and EZCal PRO are used for cleaning and descaling any of the humidifiers and cleans mineral build-up. EZCal and EZCal PRO are the only recommended cleaning and descaling solutions. Do NOT use any other cleaning solutions since it can damage the product. Any use of cleaning solutions apart from EZCal and EZCal PRO will void the warranty. Instructions for using are on the packet. Only use 1 packet for 32oz of water. Do not change the ratio. It can also be used for other humidifier brands. Thoroughly rinse the base with tap water and make sure no EZCal and EZCal PRO residues remains in the base! EZCal and EZCal PRO are available at selected retail stores and online www.boneco.us.

Please refer to the enclosed manual for putting the A250 into operation.