

**BONECO**  
healthy air

TRADITION SINCE 1956  
 A SWISS COMPANY

# H400

# MANUAL



**Read and save these instructions**  
**Lisez et enregistrez ces instructions**  
**Lea y guarde estas instrucciones**



**EN** Always observe all safety notes (included separately in delivery).

---

**FR** Veuillez respecter impérativement l'ensemble des consignes de sécurité (fournies séparément dans le contenu de la livraison).

---

**ES** Tenga en cuenta siempre todas las indicaciones de seguridad (se suministran aparte junto con el producto).

---



<b>EN</b>	<b>Instructions for use</b>	<b>5</b>
<b>FR</b>	<b>Mode d'emploi</b>	<b>25</b>
<b>ES</b>	<b>Instrucciones de uso</b>	<b>45</b>

## **INSTRUCTIONS FOR USE**

## TABLE OF CONTENTS

<b>Items included</b>	<b>8</b>	<b>The benefits of the BONECO app</b>	<b>16</b>
<b>Overview and part names</b>	<b>9</b>	About the BONECO app	16
<b>Technical data</b>	<b>10</b>	Scope of services	16
<b>Starting up</b>	<b>11</b>	<b>Connecting to the app</b>	<b>17</b>
<b>Manual handling</b>	<b>12</b>	Preparations	17
On manual handling	12	BONECO app for iOS	17
AUTO mode	12	Pairing	17
Adapted AUTO mode	12	BONECO app for Android	17
Switching on and off	12	<b>Meaning of the status LED</b>	<b>18</b>
Manual control	13	LED lighting up in WHITE, BLUE OR GREEN	18
<b>The various operating modes</b>	<b>14</b>	LED pulsating in blue AND WHITE	18
Hybrid mode ("Hybrid")	14	LED ring flashing in blue	18
"Hybrid" LED operating mode	14	LED flashing in red	18
Humidification only ("Humidifier")	14	<b>Notes on cleaning</b>	<b>19</b>
"Humidifier" LED operating mode	14	About cleaning	19
Purification only	14	Recommended cleaning intervals	19
"Purifier" LED operating mode	14	<b>Cleaning the appliance</b>	<b>20</b>
<b>Fragrance container</b>	<b>15</b>	Disassembly and cleaning	20
Basics	15	<b>Cleaning the AW200 evaporator mat</b>	<b>21</b>
Use	15	About the AW200 evaporator mat	21
		Cleaning in the washing machine	21
		Cleaning by hand	21

<b>Cleaning pre-filter</b>	<b>22</b>
About the pre-filter	22
Cleaning pre-filter	22
<b>Replacing the accessories</b>	<b>23</b>
Replacing the AH300 pollen filter	23
Availability of accessories	23
<b>Notes on operation and troubleshooting</b>	<b>24</b>

## ITEMS INCLUDED

### HEALTHY AIR IS A BASIC NEED.

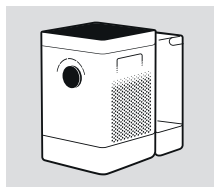
There is little to which we react with greater sensitivity than poor air. And yet many people do not pay enough attention to air quality, which has consequences for health and quality of life. This makes us all the more pleased that you have chosen a TOP-BONECO appliance to ensure that the basic need for healthy room air is satisfied for you and the people around you.

### AVAILABILITY OF ACCESSORIES

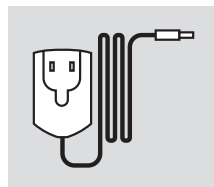
You can obtain replacements for worn-out accessories as well as additional accessories from:

- Your BONECO specialist dealer,
- At [www.shop.boneco.us](http://www.shop.boneco.us)
- Directly via the "BONECO healthy air" app.

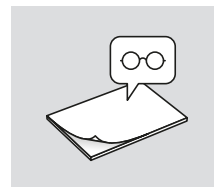
### ITEMS INCLUDED



BONECO H400



Power supply



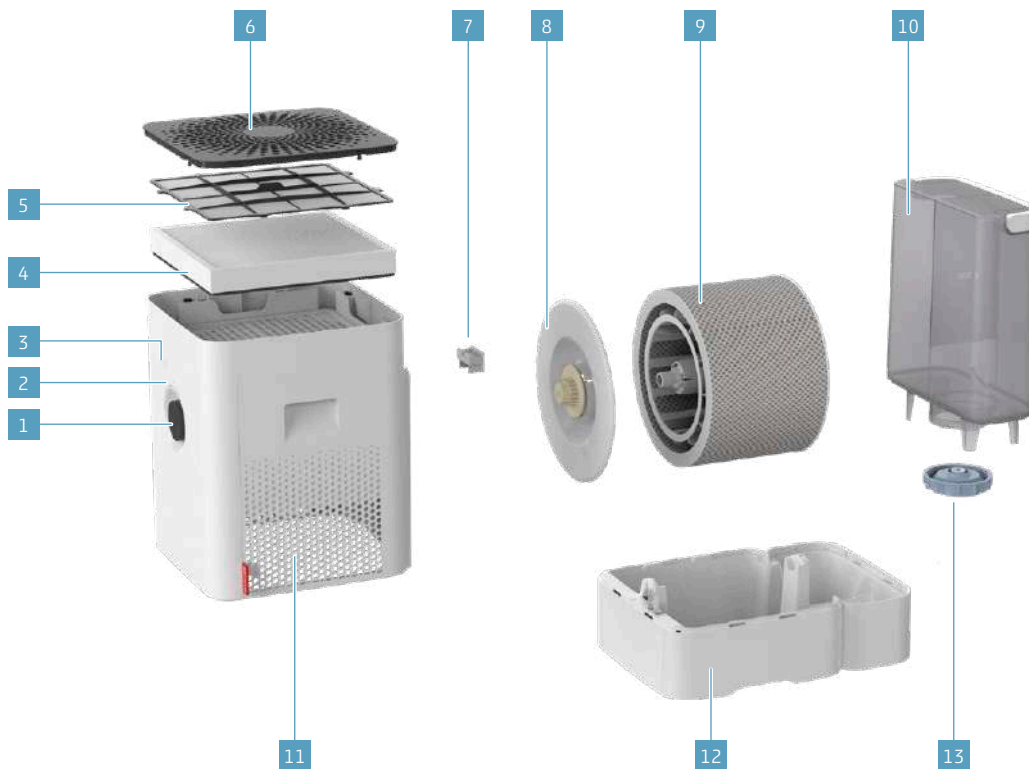
Quick Manual



Safety instructions



## OVERVIEW AND PART NAMES



- 1 On/Off, performance level
- 2 Status LED
- 3 Hygrometer
- 4 AH300 pollen filter
- 5 Pre-filter
- 6 Cover/air inlet
- 7 Fragrance container\*
- 8 Drum\*
- 9 AW200 evaporator mat\*\*
- 10 Water tank
- 11 Air outlet
- 12 Water base\*
- 13 Water tank cover

\* Washable in the dishwasher up to 122 °F (50 °C)

\*\* Washable in the washing machine up to 104 °F (40 °C)

## TECHNICAL DATA

### TECHNICAL DATA\*

<b>Type designation</b>	BONECO H400
<b>Mains voltage</b>	100 - 240 V ~ 50 / 60 Hz
<b>Power consumption</b>	3.7 - 14.7 W
<b>Humidity output up to</b>	2.5 gal/day (400 g/h)**
<b>Particle CADR</b>	60 CFM (100 m <sup>3</sup> /h)
<b>Recommended room size up to</b>	600 sq ft (60 m <sup>2</sup> )
<b>Water capacity max.</b>	3.2 gallons (12 liters)
<b>Dimensions L × W × H</b>	11 × 15.7 × 18.3 in. (280 × 400 × 465 mm)
<b>Weight (empty)</b>	14.9 lbs (6.8 kg)
<b>Operating noise level</b>	25 - 55 dB(A)**

\* subject to change

\*\* at 120V ~ 60Hz

## STARTING UP



## MANUAL HANDLING

### ON MANUAL HANDLING

Manual handling works conveniently by the knob on the front side. The BONECO app offers additional, extensive options for control and automation of the BONECO appliance.

### AUTO MODE

If you have never operated the BONECO appliance with the BONECO app and switch it on for the first time, it starts up in AUTO mode. The appliance is preset to a target relative humidity of 50 percent. The performance level is automatically adapted to the current humidity: The drier the air, the higher the performance level.

If the preset target humidity is exceeded, the appliance switches to standby mode, which is indicated by the pulsing LED.



If the humidity drops below the set level, the BONECO appliance resumes operation.

### ADAPTED AUTO MODE

If you have already operated the BONECO appliance with the BONECO app and set a different humidity, that value is automatically taken over when the appliance is switched on.

### SWITCHING ON AND OFF

1. Briefly press the knob once to switch on the BONECO appliance.



The appliance is always in AUTO mode when it is switched on. You can identify active AUTO mode by the small LED that lights up above the knob.



2. To switch off the BONECO appliance while it is in AUTO mode, briefly press the knob once.

### MANUAL CONTROL

1. Briefly press the knob once to switch on the BONECO appliance.



The appliance is always in AUTO mode when it is switched on.

2. Adjust the output to your needs by setting the knob to the desired level from 1 to 6. This action exits AUTO mode (AUTO LED is off).



The selected performance level is indicated by the number of LEDs that light up above the knob.



3. Briefly press the knob once to exit manual mode and to reactivate AUTO mode.
4. Briefly press the knob once more to switch off the BONECO appliance.

**i** If you exit AUTO mode, the BONECO appliance will continue at the selected performance level until the water base is empty, regardless of what the current level of humidity is.

## THE VARIOUS OPERATING MODES

### HYBRID MODE (“HYBRID”)

The BONECO appliance combines two functions.

The AH300 pollen filter cleanses breathing air by removing pollen, household dust and fine particles.

The evaporator mat humidifies the room air.

You achieve the best results when the BONECO appliance is humidifying and purifying the air at the same time. Nevertheless it is possible to use just one of the two functions.

### “HYBRID” LED OPERATING MODE



### HUMIDIFICATION ONLY (“HUMIDIFIER”)

We recommend using the BONECO appliance with inserted AH300 pollen filter even in the winter because, aside from pollen, it also filters household dust out of the air. In order to operate the appliance without the pollen filter, simply remove the filter from its holder and use the BONECO app to switch to “Humidifier” mode.



When you remove the AH300 pollen filter, the maximum humidifier performance increases because you achieve a better air passage.

### “HUMIDIFIER” LED OPERATING MODE



### PURIFICATION ONLY

In summer, humidity is usually sufficient, but pollen gives people with allergies a difficult time. If you only want to use the purifying effect of the AH300 pollen filter, switch the BONECO appliance to “Purifier” operating mode using the BONECO app and remove the water and the drum from the appliance.


### “PURIFIER” LED OPERATING MODE




## FRAGRANCE CONTAINER

### BASICS

Commercially available fragrances and essential oils can be inserted into the fragrance container on the rear side.

 Never mix any additives into the water base itself, since doing so can decrease the performance of the BONECO appliance and even cause damage. This damage is not covered by the warranty.



 The fragrance container can be cleaned in the dishwasher. However, the temperature may not exceed 122 °F (50 °C).

### USE

1. Remove the water tank.



2. On the rear side, press down on the fragrance container to take out the drawer.



3. Sprinkle the felt insert in the drawer with the fragrance of your choice.



4. Reinsert the fragrance container.



5. Reinsert the water tank.



## THE BENEFITS OF THE BONECO APP

### ABOUT THE BONECO APP

The "BONECO healthy air" app is used for enhanced control of the BONECO appliance and lets you take full advantage of its potential. The app includes functions such as a timer, a humidity preset and the option to switch between various programs. In addition, it provides reminders for the cleaning intervals and other recurring tasks.



### SCOPE OF SERVICES

#### Operating modes

"Hybrid"	The air is cleaned and humidified at the same time
"Purifier"	The air is cleaned, but not humidified
"Humidifier"	The air is humidified, but not cleaned

#### Programs

	Predefined settings for frequent situations
AUTO mode	The appliance uses all fan levels from 1 to 5 and has a preset target humidity of 50%
SLEEP mode	The appliance uses fan level 1 only and increases the target humidity to 45%
BABY mode	The appliance uses fan level 1 through 4 and increases the humidity to 60%

#### Hygrostat

Defining the desired humidity

#### Dimmer

Setting the brightness of the status LED

#### Weather

Displays the current weather and outside temperature

#### ON timer

The appliance switches on after a set time

#### OFF timer

The appliance switches off after a set time

#### Accessories and consumables

Provides support in replacement orders and further information



## CONNECTING TO THE APP

### PREPARATIONS

Make sure that Bluetooth is activated on your smartphone. During pairing, make sure that the smartphone is in the same room as the BONECO appliance.

Once paired successfully, you can control the BONECO appliance with your smartphone from the same room or even from an adjacent room. However, the maximum distance between smartphone and BONECO appliance depends on the specific structural conditions.

### PAIRING

1. Make sure that Bluetooth is activated on your smartphone.
2. Start the BONECO app.
3. Follow the instructions in the app.

### BONECO APP FOR IOS

Search the App Store for "BONECO healthy air" or scan the QR code below.



### BONECO APP FOR ANDROID

Search the Google Play Store for "BONECO healthy air" or scan the QR code below.



## MEANING OF THE STATUS LED

### LED LIGHTING UP IN WHITE, BLUE OR GREEN

In normal operation, the status LED lights up in the color of the current operating mode continuously. The performance level is indicated by the number of the illuminated ring LEDs.



### LED RING FLASHING IN BLUE

When the 6 ring-shaped LEDs are flashing in blue, the BONECO appliance is ready for pairing with a smartphone via Bluetooth.



### LED FLASHING IN RED

The red LED flashes when the water tank is empty. Fill the water tank with fresh, cold tap water.



### LED PULSATING IN BLUE AND WHITE

A pulsating LED indicates that the target humidity has been exceeded in AUTO mode; the appliance is now in stand-by mode. Operation resumes as soon as the humidity drops below the set level.



## NOTES ON CLEANING

### ABOUT CLEANING

Regular maintenance and cleaning are necessary for trouble-free and hygienic operation.

Recommended cleaning and maintenance intervals vary depending on air quality, water quality and operating time.

A soft cloth, dish detergent and a scrub brush are recommended for cleaning by hand.



Always unplug the BONECO appliance from the power outlet before you begin cleaning. Failure to do so can result in electric shock and fatal injury!



In the case of cleaning the drum and the water base in the dishwasher, a temperature of 122 °F (50 °C) may not be exceeded, as temperatures higher than this can cause the plastic parts to deform.

### RECOMMENDED CLEANING INTERVALS

Interval	Action
After the third day without operation	Empty water base and water tank and fill with fresh water
Every 2 weeks	Clean water base, drum and AW200 evaporator mat
	Clean the pre-filter
Annually	Clean the fan and the inner area of the appliance

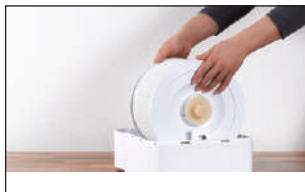
## CLEANING THE APPLIANCE

### DISASSEMBLY AND CLEANING

1. Take off the upper part of the BONECO appliance.



2. Remove the drum with the AW200 evaporator mat.



3. Twist both drum discs to release them. When doing so, note the markings on the outer side of the disc.



4. Remove the AW200 evaporator mat from the drum.



5. Clean the water base and the drum either by hand or in the dish washer at a max. temperature of 122 °F (50 °C).



6. Clean the inside of the water tank by hand or with a suitable cleaning brush using a commercially available dish detergent.



7. Clean the water tank cover with a commercially available dish detergent and a cleaning brush.



8. Put the appliance back together by following the steps in reverse order.

## CLEANING THE AW200 EVAPORATOR MAT

### ABOUT THE AW200 EVAPORATOR MAT

The AW200 evaporator mat can be cleaned in the washing machine. Uses any commercially available detergent.

We recommend putting the AW200 evaporator mat into a laundry bag or washing it separately because it will collect loose fibers from other pieces of laundry otherwise.

When stretching the AW200 evaporator mat on the drum after cleaning, take note of correct positioning:



### CLEANING IN THE WASHING MACHINE

The AW200 evaporator mat can be cleaned in the washing machine. Commercially available detergents can be used.

 The AW200 evaporator mat must not be washed at a temperature higher than 104 °F (40 °C).

 Do not dry the AW200 evaporator mat in the clothes dryer.



### CLEANING BY HAND

1. Add a little detergent to warm water and tumble the AW200 evaporator mat in it thoroughly to get dish detergent on all of it.



2. Rinse out the AW200 evaporator mat repeatedly in clean, hand-warm water until suds no longer form.
3. Allow the AW200 evaporator mat to dry before you stretch it on the drum again.

## CLEANING PRE-FILTER

### ABOUT THE PRE-FILTER

The pre-filter cleans the air from coarse contaminants. Clean the pre-filter if it is dusty or dirty.

### CLEANING PRE-FILTER

1. Press down each of the four corners of the cover in sequence to unlock it.



2. Remove the pre-filter by pulling it upwards by the lug in its center.



3. Wash the pre-filter under running water using a cleaning brush.



4. Dry the pre-filter with a cloth.



5. Insert the pre-filter into the appliance.



6. Reattach the cover.



## REPLACING THE ACCESSORIES

### REPLACING THE AH300 POLLEN FILTER

The AH300 pollen filter cannot be cleaned.

- Dirt is normal and shows that the AH300 pollen filter is working.
- Replace the AH300 pollen filter once a year to maintain the cleaning performance.
- The used AH300 filter can be disposed of with your regular household waste.

### AVAILABILITY OF ACCESSORIES

You can obtain replacements for worn-out accessories as well as additional accessories from:

- Your BONECO specialist dealer,
- At [www.shop.boneco.us](http://www.shop.boneco.us)
- Directly via the "BONECO healthy air" app.

## NOTES ON OPERATION AND TROUBLESHOOTING

<b>Problem</b>	<b>Possible cause</b>	<b>Action</b>
<b>Air has an unpleasant odor</b>	Stagnant water in the water base	Drain the water base and clean the appliance and the AW200 evaporator mat
<b>AUTO LED on the appliance flashes red</b>	The water base is empty	Fill the water base
<b>Appliance cannot be operated in the app. The message "Searching ..." "Cannot be found" appears</b>	Appliance is blocked by another smartphone	Close the app on the second smartphone
<b>AUTO LED pulses</b>	The desired humidity has been reached or exceeded	None needed
<b>Current display flashes if operation is attempted</b>	Operation is blocked	Disable the LOCK function in the app
<b>Display remains dark</b>	The brightness of the LEDs has been heavily reduced in the app	Increase the brightness of the LEDs in the app