



P600

OPERATING
&
FILTER REPLACEMENT
DIRECTIONS

TO BEGIN USING YOUR **AIRPURA**

Inspect the exterior of your Airpura to verify there is no damage from shipping. If any damage is noted, please follow the instructions from the distributor returns policy.

Wipe the unit with a damp cloth to remove any dust from packaging

Plug the unit into a regular grounded 110 volt outlet

Turn on the unit to MAX and allow it to run for a few minutes

Set the variable speed control to the level you wish

The most efficient way to use your Airpura for regular air quality maintenance is to run it at a low speed **24 hours a day 7 days a week.**

Maintain a humidity level of below 40% at all times in your home.



FILTER MAINTENANCE AND REPLACEMENT

Ensure regular maintenance/replacement of filters

The Prefilter

Can be vacuumed from the exterior of the unit once a month or more often. Should be replaced at least after 12 months of use

To vacuum the Prefilter

Use the brush attachment on your vacuum cleaner
Vacuum slowly around the mesh surface of the filter chamber

IMPORTANT SAFETY NOTE

Please ensure air purifier is turned OFF when plugging into a power source. Failure to do so may result in motor potentially stalling and/or burning.

Replacing the UV bulb

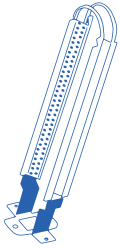
Open the filter chamber following the instructions

Pull the bulb upward out of the connector

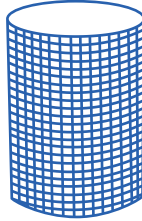
Push the replacement bulb firmly into the connector

Close the filter chamber following instructions

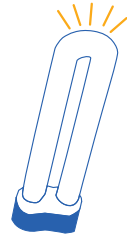




TitanClean
18-20 months



HEPA 600RVHU Filter
(99.97% efficient @ 0.3 Microns)
3 to 5 years



UV bulb
18-20 months



Poly Prefilter 600 2-pack
12 months

P614: HEPA 14 Filter
(99.99% efficient @ 0.3 Microns)
P600+: HEPA 600 Filter w/ TiO2
(99.97% efficient @ 0.3 Microns)
P614+: HEPA 14 Filter
(99.99% efficient @ 0.3 Microns) + TiO2



18 lbs, Coconut Shell Carbon Filter (100% Blend)
24 months

Technical specifications

Particle removal

Over 100 ft² true HEPA
(Measured only 1 side)
12 pleats per inch
Pleats warm rolled with separators

Activated carbon filter

18 lbs carbon filter
13"H X 13.25"OD X 9"ID

Carbon Bed

2" deep X 570 sq. surface

Air Flow 560 cfm

More cfm than any other
home unit available

Prefilter

570 in² x 1 in

Housing

Powder coat steel

Size

23 in x 15 in

Weight

35 lbs total

Watts

120 on high / 40 on low

Sound Level

28.1 db on low (at 6 feet)
62.3 db on high (560 cfm)
(Room level 25.1 db)

Voltage options

115 or 220 volts

ETL Certified

Conforms to CSA C22.2
no 113 ANSI / UL 507



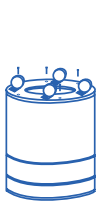
Air purifiers models and filter configurations

| | Prefilter | Particulate | Carbon |
|------------|--|-------------|---|
| Alternates | Cotton Prefilter TarBarrier Prefilter | | 18 lbs anthracite carbon filter (100%) |

To open the filter chamber



Turn over
the Airpura



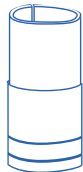
Remove the 4
retaining screws



Take off
the cover



Remove
the gasket



Position the
Prefilter inside
the filter
chamber



Place a felt gasket at
the bottom of the
filter chamber



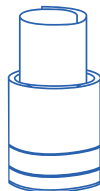
Unfold the filter slider
(Supplied with replacement
filters or on request
Part#6F 001)



Roll it
into a spiral



Insert the tube
into the filter
chamber inside
the Prefilter



Let the spiral
open to fill
the opening



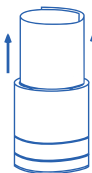
Open the top of the
spiral to make a
slight funnel



Insert the
Carbon canister into
the funnel and hold it
straight



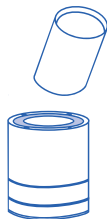
Let the canister
slide down
the filter slider



Pull the filter slider up
out of the cavity using
both hands and let the
canister slide to the
bottom of the cavity



Remove the filter
slider and fold it
for further use



Slide in the
Hepa filter

To close the filter chamber



Replace
the gasket



Position the
indentation in the cover
into the center of the
HEPA filter



Replace
the 4 screws
and tighten



Turn the Airpura
back on casters