

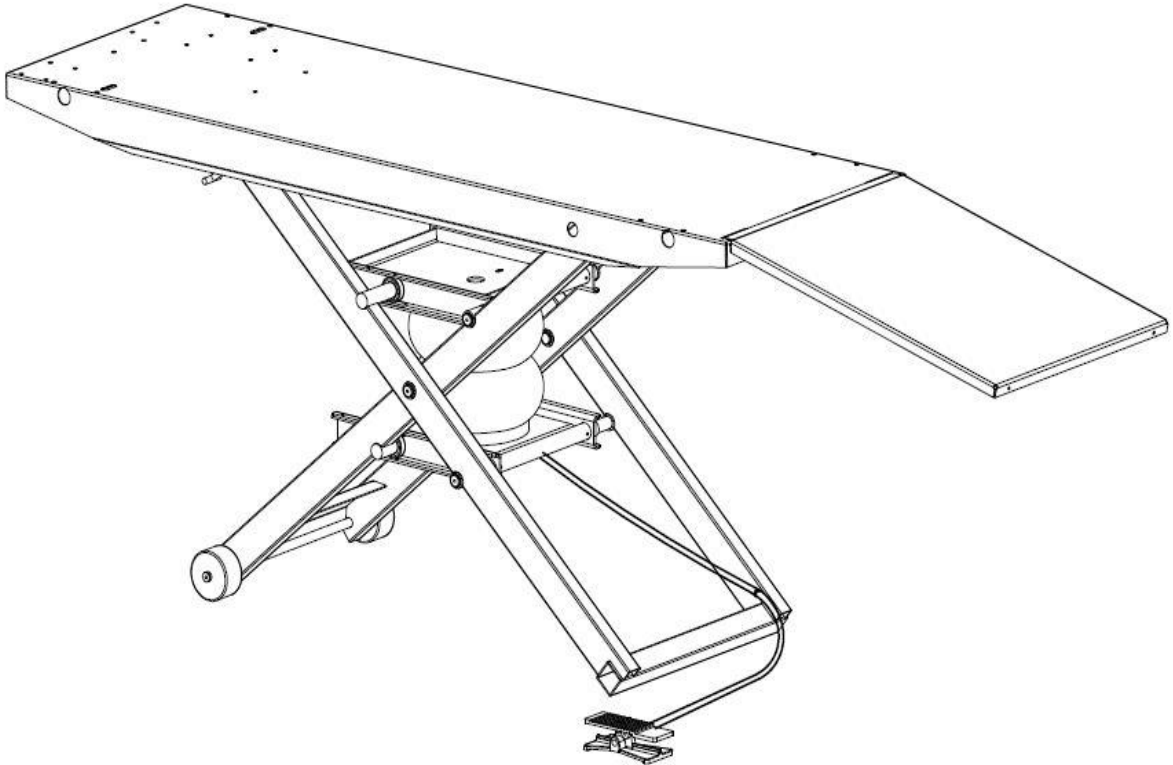


# STANDARD 1200 AIR LIFT

λ INSTRUCTIONS λ PARTS DRAWING λ PART LIST

ITEM # 40100G - 40100O - 40100R - 40100B - 40100K

**⚠ WARNING: READ INSTRUCTIONS BEFORE OPERATING**



1. Center load on table - 1200 lb. maximum.
2. Connect to 120 psi maximum shop air.
3. Keep safety bar in position at all times - except when lowering.
4. Keep hands and tools from under carriage.
5. Do not mount table when in elevated position.
6. Do not ride vehicle onto lift.
7. Lift must be in the lowered position when moving.
8. Only trained persons should operate Air Lift.
9. The working area should be sufficiently lit.
10. Foot controller should be at least 3 feet away from Air Lift during raising and lowering operation.
11. Recommended for indoor use only.
12. Tie-down straps must be used in conjunction with the holes provided in the lift top.
13. Exhaust all air from bellows before removing the load From the lift.

**⚠ NOTE: READ ENTIRE MANUAL TO COMPLY WITH ALL SAFETY AND SERVICE PRECAUTIONS. DEATH, PERSONAL INJURY AND/OR PROPERTY DAMAGE MAY OCCUR UNLESS INSTRUCTIONS ARE FOLLOWED CAREFULLY.**

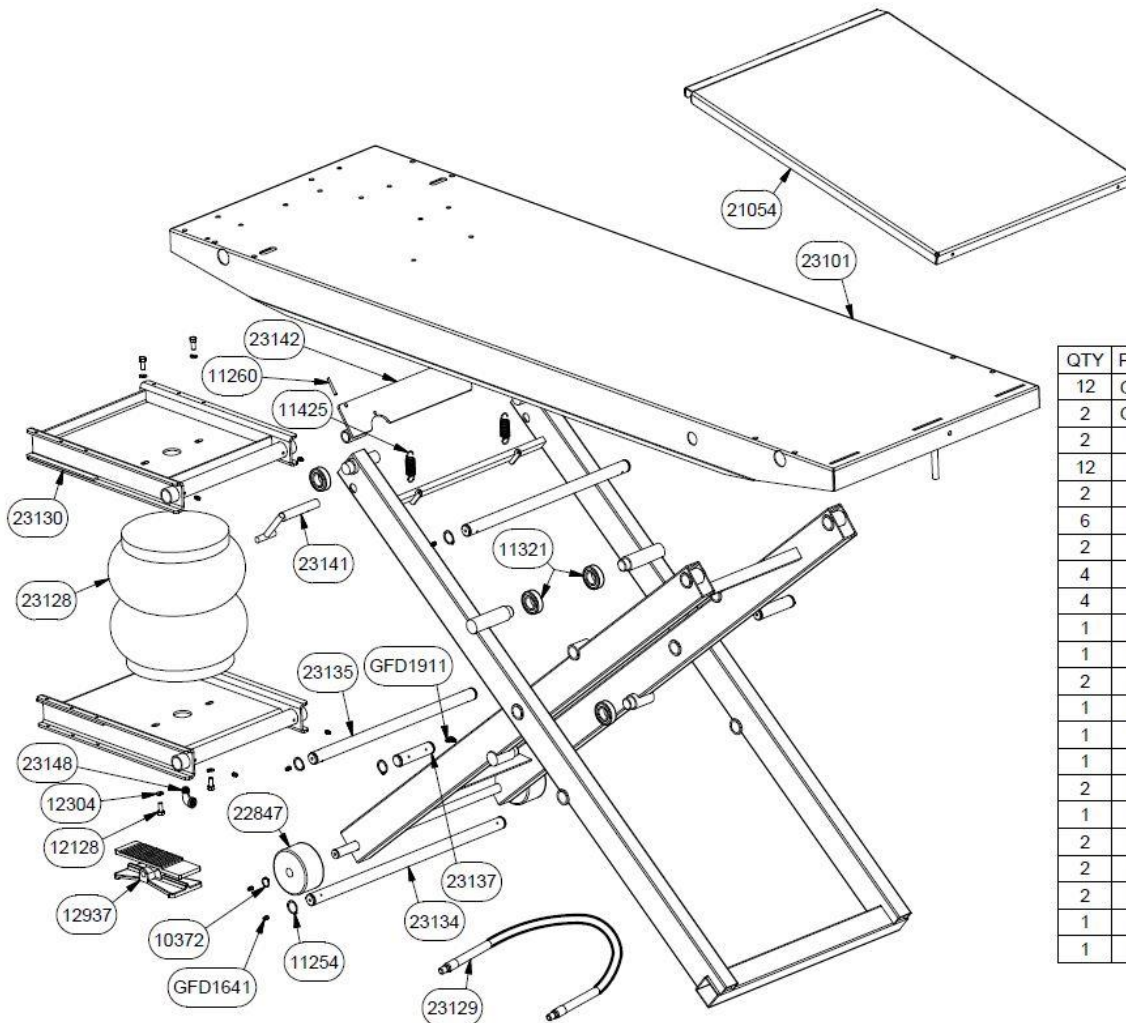
## UNPACKING AND SET-UP

1. Open carton, then remove ramp and shipping boards.
2. **CAREFULLY TURN TABLE UPRIGHT INTO OPERATING POSITION BEFORE REMOVING SHIPPING CABLE RESTRAINT FROM SCISSOR MECHANISM.**
- ▲ 3. Connect foot-operated air valve to 120 psi maximum air supply. The lift may be damaged and/or personal injury may result if the pressure exceeds the maximum 120 psi rating.
4. Stand clear of lift table, and depress the UP side of foot valve to raise table.
5. To lower table, raise lift to remove weight from detent pawl, flip detent pawl to unlock, and lower lift.
6. Mount ramp to top by inserting ramp tabs into slots in lift top.

## OPERATION

- ▲ 1. Loads must be centered on table at all times.
- ▲ 2. Loads must be firmly positioned and secured on table at all times. Tie-down straps **must** be used in conjunction with the holes provided in the lift top.
- ▲ 3. **ALWAYS EXHAUST ALL AIR FROM AIR BELLOWS BEFORE UNLOADING LIFT, FAILURE TO DO SO COULD CAUSE THE LIFT TO JUMP UP WHEN LOAD IS REMOVED.**
4. All moving parts have been lubricated at the factory and should be re-lubricated monthly.

## PARTS DRAWING - PARTS LIST



QTY	PART No.	DESCRIPTION
12	GFD1641	ZERK GREASE 1/4"
2	GFD1911	90 DEG. ZERK
2	10372	3/4" RETAINING RING
12	11254	1" RETAINING RING
2	11260	ROLL PIN 3/16 X 1 1/2
6	11321	BEARING 1641-2RS
2	11425	SPRING
4	12128	BOLT 5/16-18 X 3/4
4	12304	5/16 LOCKWASHER
1	12937	FOOT VALVE ASSEMBLY
1	21054	RAMP ASSEMBLY
2	22847	4" PHENOLIC WHEEL
1	23101	TOP ASSEMBLY
1	23128	AIR BELLOWS
1	23129	AIR HOSE X 10FT
2	23130	AIR BAG FRAME
1	23134	PIVOT SHAFT
2	23135	PIVOT SHAFT
2	23137	SCISSOR PIN
2	23141	DETENT HANDLE
1	23142	DETENT PAWL
1	23148	90 DEGREE ELBOW

## **RECOMMENDED MAINTENANCE**

1. Daily visual checks to be done.
  - A. Check all retaining rings and working parts are in place and in good working condition before operations
  - B. Check air bellows, air hose, and foot pedal daily for leaks.
2. Grease all grease zerks monthly. Zerks are located on the inside of the scissor pins. Also located on the ends of the air bag mount pins, the air bag mount tubes, the pivot shaft under the lift top, and on the wheels. 16 zerks in total.

AVAILABLE ACCESSORIES	
PART NUMBER	DESCRIPTION
10728	12" SIDE EXTENSIONS (EXTENDS WIDTH FROM 24" TO 48")
10732	LIFT DOLLY-(USED FOR MOVING LIFT AROUND WHEN NOT IN USE)
10736	13" REAR EXTENSION-(EXTENDS LIFT TOP TO 93" LONG)
10737	SNOWMOBILE WING KIT-(SIDE PANELS FOR LIFTING SNOWMOBILES)
14476	CV-17 CYCLE VISE
16010	TOOL TRAY-(SIDE MOUNT FOR TOOL STORAGE)
16355	CE APPROVED COVERED FOOT PEDAL
21660	DECK HAND-(USED FOR SERVICING LAWN MOWERS)

### **Limited Lifetime Warranty**

Handy, Division of Janco Industries, Inc. is providing a limited lifetime warranty on its motorcycle lift line. The purchaser must provide Handy with a legible copy of the purchase receipt to obtain this warranty. The purchaser must provide Handy notice of the defect and establish that the equipment was properly set up, maintained and operated within the limits of rated and normal usage. Handy, Division of Janco Industries, Inc. reserves the right to have its product shipped back to the factory for inspection to ensure the lift was not being used above its rated limits and capacity. The purchaser is responsible for freight charges until a determination is made by Handy. Handy will reimburse the purchaser if it is determined that he or she was not using lift above the rated capacity. Attachments for these lift models are not included in the limited lifetime warranty. This warranty only covers the structure of the lift itself. Also excluded in this warranty are items that were purchased for the Handy lift and installed on it at the factory such as electric motors, hand-held pendants and bearings. Parts considered wearable carry a 90-day warranty. All other parts excluded from the lifetime warranty carry a 1-year warranty from time of purchase. If the lift is purchased from an un-authorized distributor, eBay or other online service, you are not eligible to receive the limited lifetime warranty for the structure of the lift. This warranty is only offered to the original purchaser and is non-transferrable. It must be purchased from Handy, Division of Janco Industries, Inc. or one of its authorized distributors.



**THE CARLSON COMPANY**  
*Your Source For Professional Service Equipment*

800-222-6199 • 949-768-3333 • Fax 949-768-3336

[www.TheCarlsonCompany.com](http://www.TheCarlsonCompany.com)