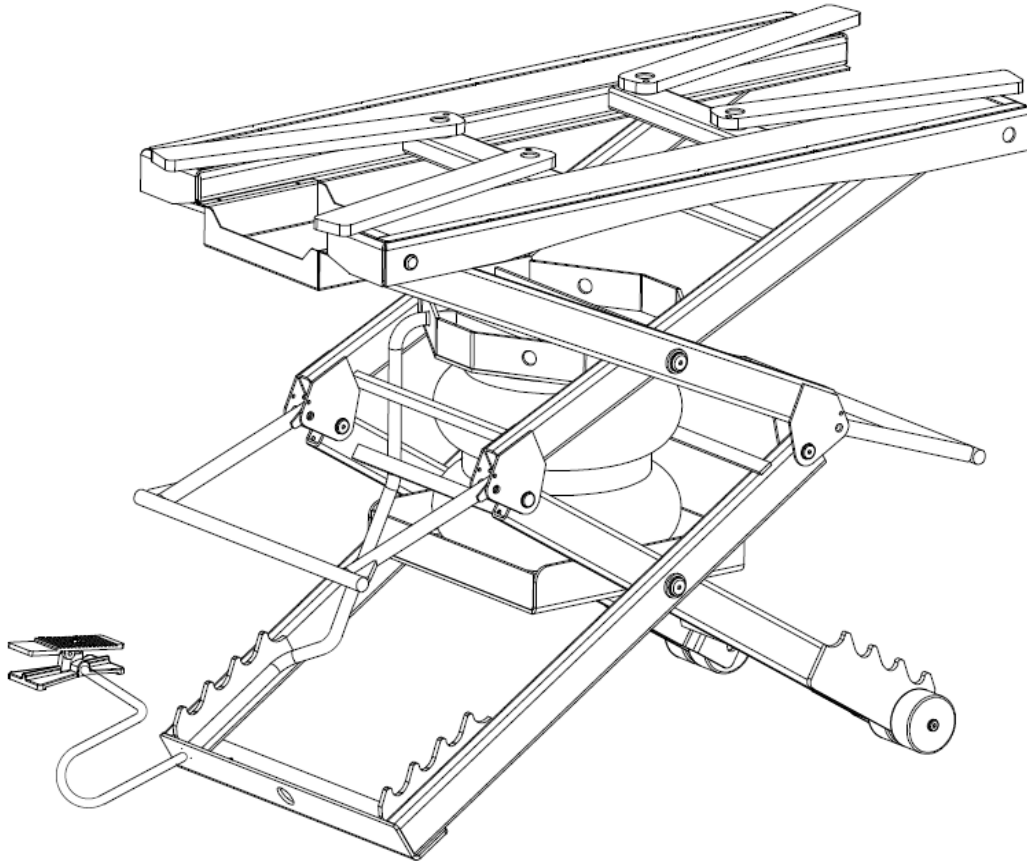




B.U.L. INSTRUCTIONS AND PARTS BREAK DOWN

⚠ WARNING: READ INSTRUCTIONS BEFORE OPERATING



Limited Lifetime Warranty

Handy, Division of Janco Industries, Inc. is providing a limited lifetime warranty on The B.U.L. lift. The purchaser must provide Handy with a legible copy of the purchase receipt to obtain this warranty. The purchaser must provide Handy notice of the defect and establish that the equipment was properly set up, maintained and operated within the limits of rated and normal usage. Handy, Division of Janco Industries, Inc. reserves the right to have its product shipped back to the factory for inspection to ensure the lift was not being used above its rated limits and capacity. The purchaser is responsible for freight charges until a determination is made by Handy. Handy will reimburse the purchaser if it is determined that he or she was not using lift above the rated capacity. This warranty covers the structure of the lift itself. It does not cover any cost of labor, transportation, freight, installation, misuse, abuse, or failure of the foot pedal due to rust and or moisture. Also excluded in this warranty are items that were purchased for the Handy lift and installed on it at the factory such as air bellows, wheels, and bearings. Parts considered wearable carry a 90-day warranty. All other parts excluded from the lifetime warranty carry a 1-year warranty from time of purchase. If the lift is purchased from an un-authorized distributor, eBay or other online service, you are not eligible to receive the limited lifetime warranty for the structure of the lift. This warranty is only offered to the original purchaser and is non-transferrable. It must be purchased from Handy, Division of Janco Industries, Inc. or one of its authorized distributors.



THE CARLSON COMPANY
Your Source For Professional Service Equipment

800-222-6199 • 949-768-3333 • Fax 949-768-3336

www.TheCarlsonCompany.com

UNPACKING AND SET-UP -(FIGURE 1)

- 1- Cut banding, and remove carton top.
- 2- Remove 2 anchors, that secure lift to the pallet.
- 3- Remove air hose, and connect to air supply.
- 4- Stand clear of lift table, and depress the UP side of the foot pedal to raise lift.
- 5- Lower detent bars and release air pressure by depressing the DOWN side of the foot pedal.
- 6- Remove support bars from under the lift and install on top of the lift.
- 7- (Utilizing 2 people) slide one end of the lift off the pallet, while the second person stabilizes the other side.
- 8- Slide other end off of the pallet and discard pallet.

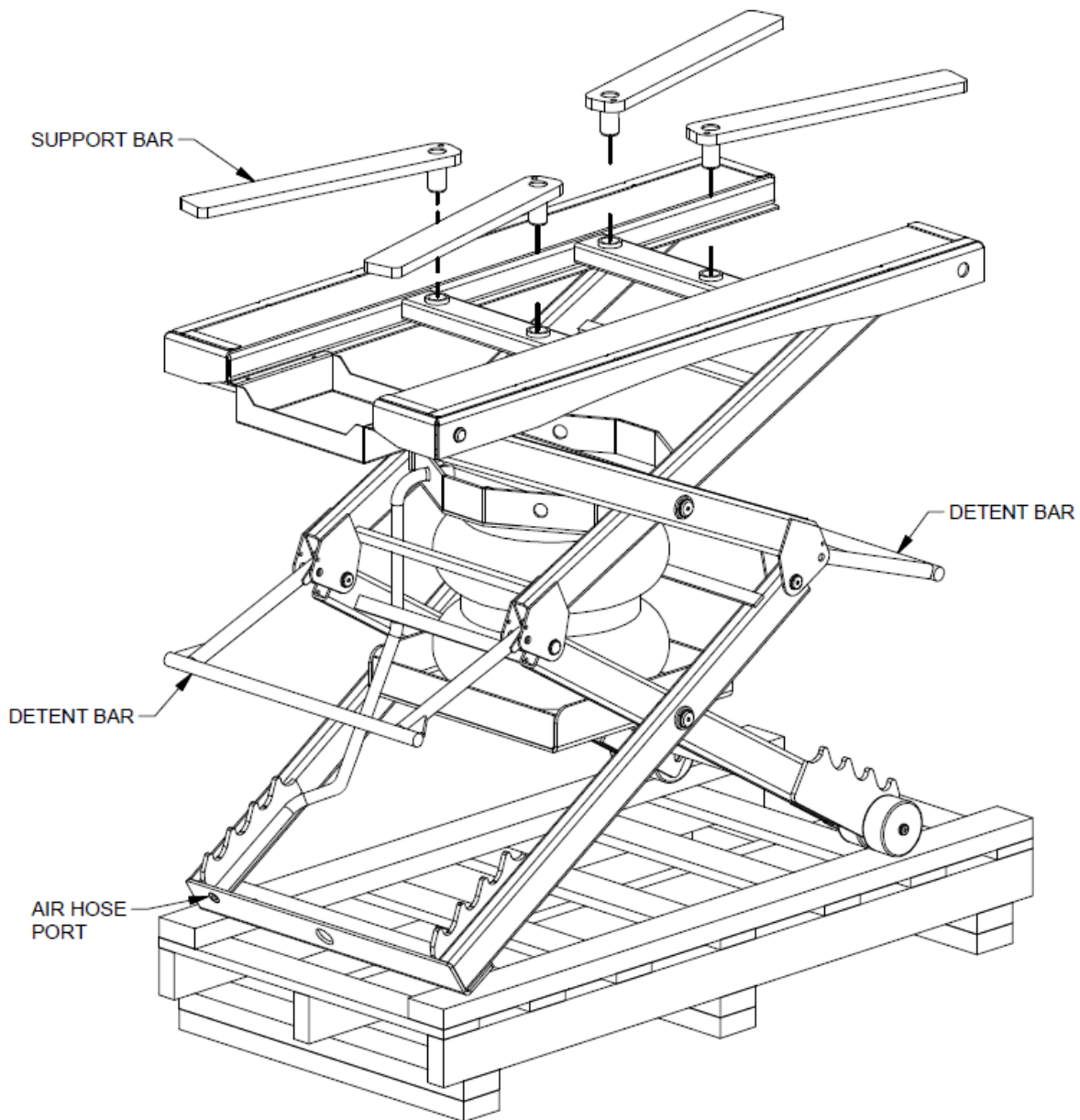


FIGURE 1



THE CARLSON COMPANY
Your Source For Professional Service Equipment

800-222-6199 • 949-768-3333 • Fax 949-768-3336

www.TheCarlsonCompany.com

OPERATION

1. Loads must be centered at all times. Lift is rated at a maximum of 2500 lbs.
 2. It is the operator's responsibility to determine if load needs to be additionally secured with straps.
 3. To raise lift depress UP side of the pedal, to lower lift depress DOWN side of the pedal.
 4. Support arms should be adjusted to support vehicle at appropriate lifting points.
 5. Once lift is raised to the desired height, flip down BOTH detent bars, and release air pressure so that the lift comes to rest on the detent bars. ALWAYS make sure to you use BOTH detent bars, and check visually to make sure they come to rest in the same detent teeth.
- ▲ **FAILURE TO CORRECTLY USE BOTH DETENT BARS COULD CAUSE SERIOUS INJURY AND/OR PROPERTY DAMAGE!**
- ▲ **IT IS VERY IMPORTANT THAT OIL DRAIN PAN IS RETURNED TO EITHER END OF THE LIFT TO PREVENT DAMAGE WHEN LOWERING LIFT.**

RECOMMENDED MAINTENANCE - FIGURE 2

Daily visual checks: Check that all pins are secured with appropriate retaining rings. Inspect air bag, and air hose for leaks, wear, and interference with lift frames.

1. All moving parts have been lubricated at the factory, and should be re-lubricated every month to prevent galling. Grease points noted on Fig. 2
2. Grease also may need to be applied to the support arm pins located on the lift top, to prevent galling.

▲ **NOTE: READ ENTIRE MANUAL TO COMPLY WITH ALL SAFETY AND SERVICE PRECAUTIONS. SERIOUS INJURY AND/OR PROPERTY DAMAGE MAY OCCUR UNLESS INSTRUCTIONS ARE FOLLOWED CAREFULLY.**

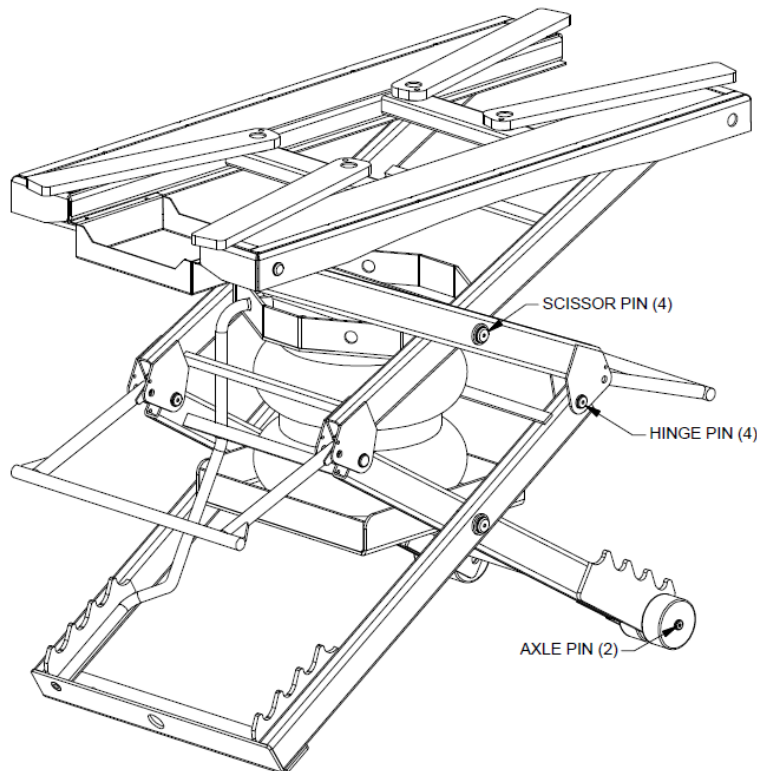
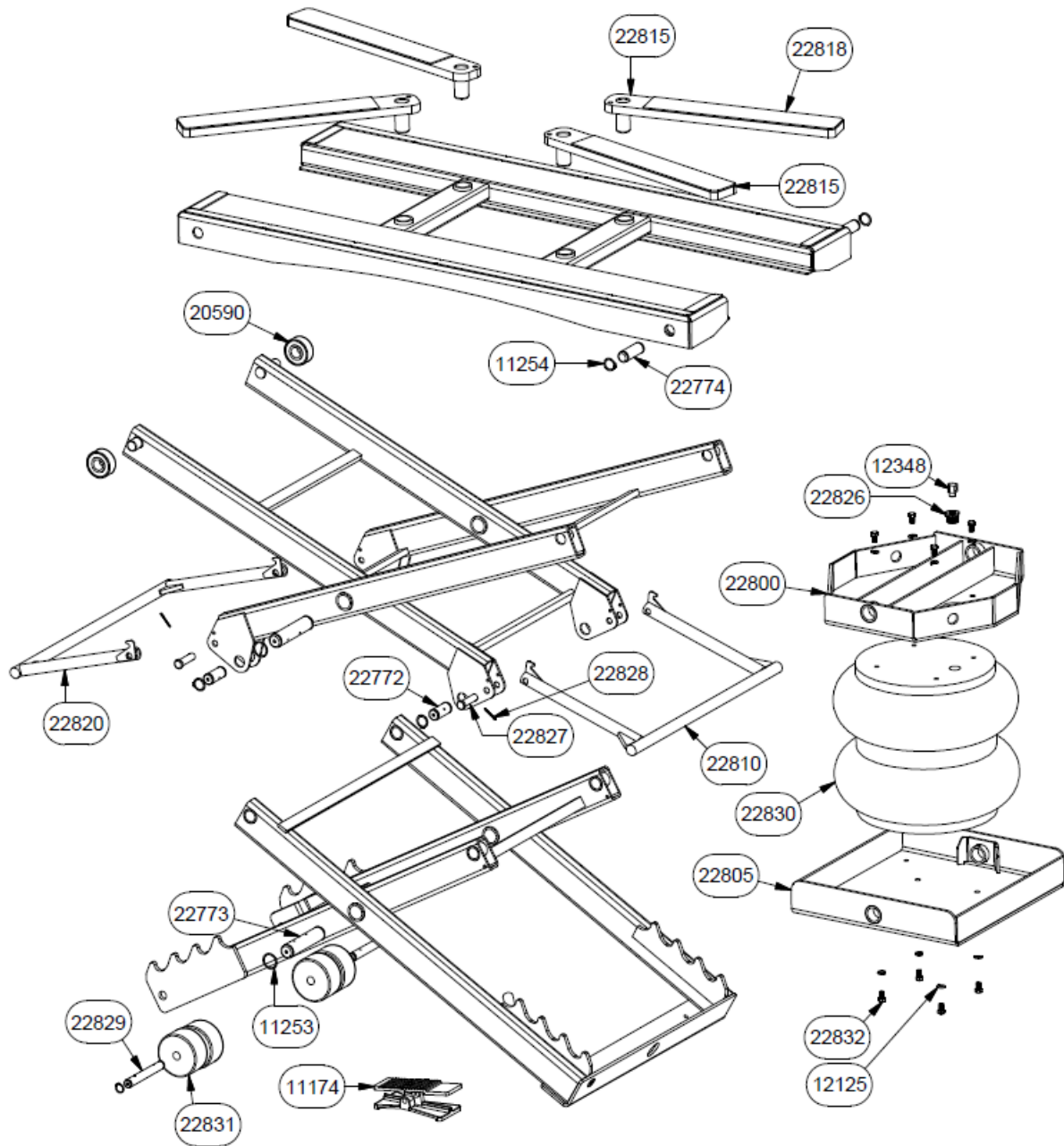


Figure 2



QTY	PART No.	DESCRIPTION	QTY	PART No.	DESCRIPTION
1	10372	RING RETAINING 3/4	1	22800	UPPER BAG MOUNT
1	11174	FOOT PEDAL ASSEMBLY	1	22805	LOWER BAG MOUNT
2	11253	RING RETAINING WHEEL 1 5/16 SPIRAL	1	22810	REAR DETENT BAR
4	11254	RING RETAINING 1	4	22815	SUPPORT ARM
8	12125	3/8 LOCK WASHER	4	22818	SUPPORT ARM PAD
1	12348	FITTING 1/4 STREET L 1/4X1/4 116-AB	1	22820	FRONT DETENT BAR
2	20590	BEARING ROLLER TRACK BRB5306-2RS	1	22826	3/4NPT TO 1/4 NPT BUSHING
4	22772	FRAME PIN	2	22827	1/2" DIA CLEVIS PIN
4	22773	SCISSOR PIN	2	22828	PIN COTTER 1/8 X 7/8 PLATED
2	22774	TOP MOUNT PIN	2	22829	AXLE PIN
			1	22830	AIR BELLOWS
			4	22831	4" PHENOLIC WHEEL
			8	22832	3/8 X 1 HEX BOLT