

# DYNOJET<sup>®</sup>

D Y N O J E T   D Y N A M O M E T E R S



**THE CARLSON COMPANY**  
*Your Source For Professional Service Equipment*

800-222-6199 • 949-768-3333 • Fax 949-768-3336

[www.TheCarlsonCompany.com](http://www.TheCarlsonCompany.com)

**TRUTH IN  
PERFORMANCE**







## + AUTOMOTIVE DYNOS

# MODEL 224X

## CHASSIS DYNAMOMETER

---

The Dynojet Automotive Model 224x Dynamometer features a 24in knurled, precision balanced drum. The large drum diameter provides a virtually flat, stable surface for tire contact, eliminating unnecessary slippage and tire deformation. The result is precise, repeatable results every time. The Model 224x has an unlimited rating of horsepower and torque with maximum speed of 200 mph. Perfect for measuring high performance vehicles and diagnosing engine and driveline problems, tuning, and repair on most street driven vehicles.

## SPECIFICATIONS:

MAXIMUM HORSEPOWER / TORQUE: UNLIMITED

MAXIMUM SPEED: 200 MPH / 322 KPH

WHEELBASE MINIMUM: N/A

WHEELBASE MAXIMUM: N/A

DRUMS: 1

DRUM DIAMETER: 24 IN / 61 CM

DRUM WIDTH: 81 IN / 205 CM

MAXIMUM AXLE WEIGHT: 3000 LBS/1361 KG

AIR REQUIREMENTS: 100 PSI

OPERATING TEMP RANGE: 32 TO 158 F/0 TO 70 C

TIMING ACCURACY: +/-1 MICROSECOND

DRUM SPEED ACCURACY: +/-1/100TH MPH

RPM ACCURACY: +/-1/10TH RPM

POWER REQUIREMENTS: 120 VOLT, 15AMP SINGLE PHASE



**THE CARLSON COMPANY**  
Your Source For Professional Service Equipment

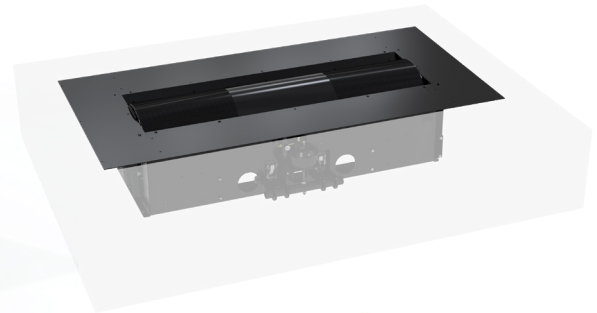
800-222-6199 • 949-768-3333 • Fax 949-768-3336

[www.TheCarlsonCompany.com](http://www.TheCarlsonCompany.com)



**FEATURES:**

- UNLIMITED RATING OF HORSEPOWER AND TORQUE
- MAXIMUM SPEED 200MPH
- POWERCORE SOFTWARE SUITE WITH WINPEP 8 TO INTERFACE (PC, PRINTER, ETC. NOT INCLUDED)
- AIR ACTUATED BRAKE SYSTEM
- DYNOWARE RT DYNAMOMETER ELECTRONICS AND HARDWARE
- PIT OR ABOVE GROUND CONFIGURATIONS AVAILABLE
- UPGRADABLE TO 224XLC, 224XLC2, 424X, 424XLC AND 424XLC2.



 **THE CARLSON COMPANY**  
Your Source For Professional Service Equipment  
800-222-6199 • 949-768-3333 • Fax 949-768-3336  
[www.TheCarlsonCompany.com](http://www.TheCarlsonCompany.com)

**DYNOJET**

## + AUTOMOTIVE DYNOS

# MODEL 224XLC

## LOAD CONTROL DYNAMOMETER

---

The highly versatile Model 224xLC is the perfect choice for modern EFI Tuning Shops. Based on the 224x dyno, the 224xLC offers the simplicity and ease of use of an inertia only dyno, along with advanced testing capabilities of a Eddy Current load style dyno. Perform A-to-B comparison tests to quantify gains from various performance products, or enable the load control feature to perform step, sweep, or road load simulations.

## SPECIFICATIONS:

MAXIMUM HORSEPOWER / TORQUE: UNLIMITED

MAXIMUM SPEED: 200 MPH / 322 KPH

WHEELBASE MINIMUM: N/A

WHEELBASE MAXIMUM: N/A

DRUMS: 1

DRUM DIAMETER: 24 IN / 61 CM

DRUM WIDTH: 81 IN / 205 CM

MAXIMUM AXLE WEIGHT: 3000 LBS/1361 KG

AIR REQUIREMENTS: 100 PSI

OPERATING TEMP RANGE: 32 TO 158 F/0 TO 70 C

TIMING ACCURACY: +/-1 MICROSECOND

DRUM SPEED ACCURACY: +/-1/100TH MPH

RPM ACCURACY: +/-1/10TH RPM

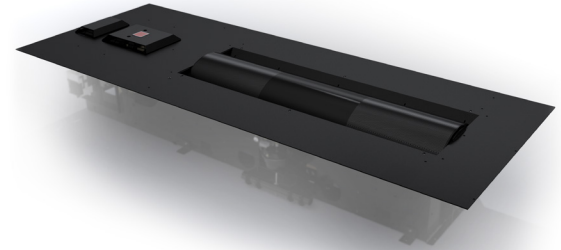
## POWER REQUIREMENTS:

120 VOLT, 15AMP SINGLE PHASE

240 VOLT, 30AMP SINGLE PHASE

**FEATURES:**

- UNLIMITED RATING OF HORSEPOWER AND TORQUE
- MAXIMUM SPEED 200MPH
- POWERCORE SOFTWARE SUITE WITH WINPEP 8 TO INTERFACE (PC, PRINTER, ETC. NOT INCLUDED)
- DYNOWARE RT DYNAMOMETER ELECTRONICS AND HARDWARE
- EDDY CURRENT LOAD ABSORPTION UNIT TO PERFORM LOADED TESTS, INCLUDING STEP, SWEEP, AND ROAD LOAD SIMULATIONS
- PIT OR ABOVE GROUND CONFIGURATIONS AVAILABLE
- UPGRADABLE TO 224XLC2, 424XLC AND 424XLC2





## + AUTOMOTIVE DYNOS

# MODEL 424X

## AWD CHASSIS DYNAMOMETER

---

The Model 424x is comprised of two industry standard 224x dyno base units. Horsepower and torque are measured at each drum and can be displayed and/or logged either independently or combined. This feature allows you to assess the vehicle's power split, and can also aid in troubleshooting drivetrain issues. The 424x is designed to grow with you as your testing needs expand in the future.

Dynojet's AWD dynos can accommodate up to a 140in wheelbase with just the touch of a button. Whether you are troubleshooting a 4-wheel drive pickup or tuning an all wheel drive vehicle, this is a system you should seriously consider.

## SPECIFICATIONS:

MAXIMUM HORSEPOWER / TORQUE: UNLIMITED

MAXIMUM SPEED: 200 MPH / 322 KPH

DRUM ADJUSTABLE WHEELBASE FROM

STANDARD: 88 IN/224 CM TO 130 IN/330 CM

OPTIONAL: 98 IN/249 CM TO 140 IN/356 CM

DRUMS: 2

DRUM DIAMETER: 24 IN / 61 CM

DRUM WIDTH: 81 IN / 205 CM

MAXIMUM AXLE WEIGHT: 3000 LBS/1361 KG

AIR REQUIREMENTS: 100 PSI

OPERATING TEMP RANGE: 32 TO 158 F/0 TO 70 C

TIMING ACCURACY: +/-1 MICROSECOND

DRUM SPEED ACCURACY: +/-1/100TH MPH

RPM ACCURACY: +/-1/10TH RPM

POWER REQUIREMENTS:

120 VOLT, 15AMP SINGLE PHASE



800-222-6199 • 949-768-3333 • Fax 949-768-3336

[www.TheCarlsonCompany.com](http://www.TheCarlsonCompany.com)

**FEATURES:**

- UNLIMITED RATING OF HORSEPOWER AND TORQUE
- MAXIMUM SPEED 200MPH
- TESTS VEHICLES IN EITHER TWO-WHEEL OR ALL WHEEL DRIVE MODES, BI-DIRECTIONAL ROTATION
- POWERCORE SOFTWARE SUITE WITH WINPEP 8 TO INTERFACE (PC, PRINTER, ETC. NOT INCLUDED)
- DYNOWARE RT DYNAMOMETER ELECTRONICS AND HARDWARE
- AIR ACTUATED BRAKE SYSTEM
- ELECTRONICALLY CONTROLLED WHEELBASE ADJUSTMENT FROM (STANDARD 88 IN – 130 IN OR OPTIONAL 98 IN – 140 IN)
- PIT OR ABOVE-GROUND CONFIGURATIONS AVAILABLE
- UPGRADABLE TO 424XLC AND 424XLC2



 **THE CARLSON COMPANY**  
Your Source For Professional Service Equipment  
800-222-6199 • 949-768-3333 • Fax 949-768-3336  
[www.TheCarlsonCompany.com](http://www.TheCarlsonCompany.com)

**DYNOJET**

## + AUTOMOTIVE DYNOS

# MODEL 424XLC<sup>2</sup>

## DUAL LOAD CONTROL DYNAMOMETER

---

At any time you can operate the dyno in inertia only mode for assessing gains from bolt-on modifications or utilize the dual eddy current absorbers for advanced load testing. The wheelbase is adjustable with the touch of a button and can handle all popular AWD vehicles on the road today.

Along with offering the precise control from the eddy current load absorption units, the system also eliminates any potential speed bias between the two drums with Speed Balance Technology. You can also easily upgrade to the 424 LINX System at any time for a complete, all-in-one testing solution.

## SPECIFICATIONS:

MAXIMUM HORSEPOWER / TORQUE: UNLIMITED

MAXIMUM SPEED: 200 MPH / 322 KPH

DRUM ADJUSTABLE WHEELBASE FROM

STANDARD: 88 IN/224 CM TO 130 IN/330 CM

OPTIONAL: 98 IN/249 CM TO 140 IN/356 CM

DRUMS: 2

DRUM DIAMETER: 24 IN / 61 CM

DRUM WIDTH: 81 IN / 205 CM

MAXIMUM AXLE WEIGHT: 3000 LBS/1361 KG

AIR REQUIREMENTS: 100 PSI

OPERATING TEMP RANGE: 32 TO 158 F/0 TO 70 C

TIMING ACCURACY: +/-1 MICROSECOND

DRUM SPEED ACCURACY: +/-1/100TH MPH

RPM ACCURACY: +/-1/10TH RPM

POWER REQUIREMENTS:

120 VOLT, 15AMP SINGLE PHASE

(2X) 240 VOLT, 30AMP SINGLE PHASE



**THE CARLSON COMPANY**  
Your Source For Professional Service Equipment

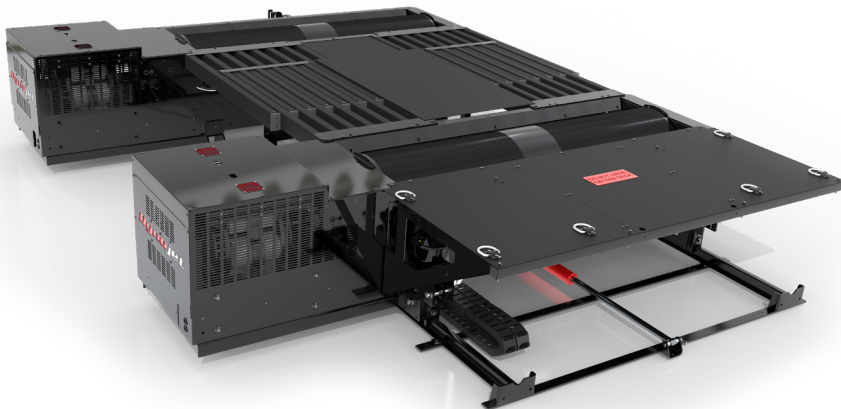
800-222-6199 • 949-768-3333 • Fax 949-768-3336

[www.TheCarlsonCompany.com](http://www.TheCarlsonCompany.com)



**FEATURES:**

- UNLIMITED RATING OF HORSEPOWER AND TORQUE
- MAXIMUM SPEED 200MPH
- TESTS VEHICLES IN EITHER TWO-WHEEL OR ALL WHEEL DRIVE MODES, BI-DIRECTIONAL ROTATION
- TWO EDDY CURRENT LOAD ABSORPTION UNITS FOR PERFORMING LOADED TESTS, INCLUDING STEP, SWEEP, AND ROAD LOAD SIMULATIONS
- POWERCORE SOFTWARE SUITE WITH WINPEP 8 TO INTERFACE (PC, PRINTER, ETC. NOT INCLUDED)
- DYNOWARE RT DYNAMOMETER ELECTRONICS AND HARDWARE
- ELECTRONICALLY CONTROLLED WHEELBASE ADJUSTMENT FROM (STANDARD 88 IN – 130 IN OR OPTIONAL 98 IN – 140 IN)
- PIT OR ABOVE-GROUND CONFIGURATIONS AVAILABLE



+ AUTOMOTIVE DYNOS

# 424 LINX SYSTEM UPGRADE KIT

---

The Dynojet 424 Linx System is a simple, highly efficient design that incorporates a high speed Multi-V Rib belt and pulleys that eliminates potential speed differentials between the dyno drums. This technology will allow you to test modern AWD vehicles without the fear of potentially damaging the center differentials, or activating intrusive stability control systems. It is also useful for those 2WD performance vehicles that require all four wheels to be rotating in order to avoid reduced power mode. The 424 Linx will also retain the full flexibility of your 424x. The Linx System is easy to connect/disconnect for switching between 2WD or AWD applications.

## SPECIFICATIONS:

MAXIMUM SPEED: 180 MPH



## + AUTOMOTIVE DYNOS

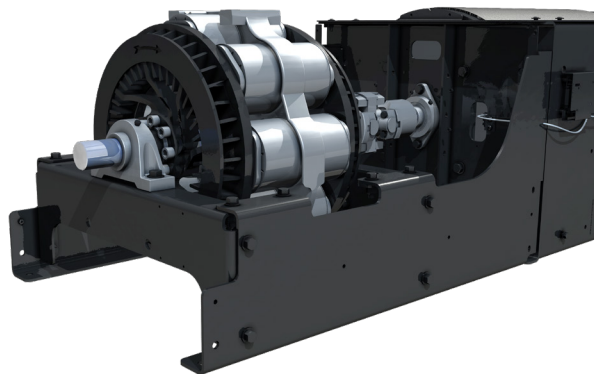
# EDDY CURRENT LOAD CONTROL

---

When performing loaded testing, the Eddy Current Load Control option utilizes an integrated Torque Cell to quantify power absorption in an ultra precise and consistent manner. Loaded test files are then available for review and analysis in the WinPEP 8 software. During a steady state test the dynamometer operator can view torque in real time, a great feature when performing live ECM tuning. Additional highlights of this system include a quick and effective calibration routine that can be accomplished in under a minute.

## SPECIFICATIONS:

MAXIMUM SPEED: 180 MPH





## + MOTORCYCLE DYNOS

# MODEL 200i

## CHASSIS DYNAMOMETER

The Model 200i offers an improved operator interface through the use of the integrated control console, PowerCore Software Suite and a wider platform for easy loading and unloading. Shop sales, service work and credibility all benefit with a Dynojet chassis dynamometer.

A great feature of the 200i is that it can easily be upgraded to the Model 200ix, 250i, or 250ix at any time. This is especially important to a NEW business. They can begin with the 200i and upgrade as their business grows.

\*WHEELBASE MEASURED FROM FRONT OF FRONT TIRE TO REAR AXLE  
EXTENDED CARRIAGE IS OPTIONAL\*

## SPECIFICATIONS:

MAXIMUM HORSEPOWER / TORQUE: UNLIMITED

MAXIMUM SPEED: 200 MPH / 322 KPH

DRUM DIAMETER: 18 IN / 45.72 CM

DRUM WIDTH: 16.37 IN / 41.59 CM

DRUMS: 1

MAXIMUM AXLE WEIGHT: N/A

STANDARD CARRIAGE WHEELBASE MIN: 66 IN / 167 CM

STANDARD CARRIAGE WHEELBASE MAX: 84 IN / 213 CM

EXTENDED CARRIAGE WHEELBASE MIN: 83 IN / 210 CM\*

EXTENDED CARRIAGE WHEELBASE MAX: 102 IN / 259 CM\*

AIR REQUIREMENTS: 100 PSI

OPERATING TEMP RANGE: 32 TO 158 F/0 TO 70 C

TIMING ACCURACY: +/-1 MICROSECOND

DRUM SPEED ACCURACY: +/-1/100TH MPH

RPM ACCURACY: +/-1/10TH RPM

POWER REQUIREMENTS:

240 VOLT, 30 AMP SINGLE PHASE



**THE CARLSON COMPANY**  
Your Source For Professional Service Equipment

800-222-6199 • 949-768-3333 • Fax 949-768-3336

[www.TheCarlsonCompany.com](http://www.TheCarlsonCompany.com)

**ABOVE GROUND  
STANDARD FEATURES:**

- UNLIMITED RATING OF HORSEPOWER AND TORQUE
- MAXIMUM SPEED 200MPH
- DYNOWARE RT DYNAMOMETER ELECTRONICS AND HARDWARE
- POWERCORE SOFTWARE SUITE WITH WINPEP 8 TO INTERFACE (PC, PRINTER, ETC. NOT INCLUDED)
- 14 EXPANSION PORTS FOR DYNOWARE RT ACCESSORIES AND DJCAN DEVICES (SUCH AS POWER COMMANDER, POWER VISION, AUTOTUNE, ETC.)

- POWDER COATED CHASSIS, WHEELBASE CAPABILITY UP TO 84 IN (FROM FRONT OF FRONT TIRE TO REAR AXLE)
- INTEGRATED CONTROL PANEL STAND WITH CONSOLE
- IGNITION WIRE INDUCTIVE TACHOMETER PICKUP LEADS
- FRONT WHEEL LOCK
- STARTER SYSTEM TO SPIN ROLLER (12V, BATTERY NOT INCLUDED)

**ADDITIONAL FEATURES  
FOR PIT MODEL:**

- POWER CARRIAGE FOR BUTTON OPERATED WHEELBASE ADJUSTMENT
- PIT COVERS
- COMPACT DESIGN ALLOWS FOR SMALLER PIT SIZE



 **THE CARLSON COMPANY**  
Your Source For Professional Service Equipment  
800-222-6199 • 949-768-3333 • Fax 949-768-3336  
[www.TheCarlsonCompany.com](http://www.TheCarlsonCompany.com)

**DYNOJET**

## + MOTORCYCLE DYNOS

# MODEL 250i

## LOAD CONTROL DYNAMOMETER

---

Dynojet's Load Control System uses the latest in Eddy Current Power Absorption technology, which combines with our easy to use software, so any technician can get repeatable, consistent results. The Load Control software provides the technician with the ability to control vehicle RPM or Speed at any throttle opening. Through our exclusive closed-loop software design, the vehicle is automatically held at your pre-determined setting.

\*WHEELBASE MEASURED FROM FRONT OF FRONT TIRE TO REAR AXLE  
EXTENDED CARRIAGE IS OPTIONAL\*

## SPECIFICATIONS:

MAXIMUM HORSEPOWER / TORQUE: UNLIMITED

MAXIMUM SPEED: 200 MPH / 322 KPH

DRUM DIAMETER: 18 IN / 45.72 CM

DRUM WIDTH: 16.37 IN / 41.59 CM

DRUMS: 1

MAXIMUM AXLE WEIGHT: N/A

STANDARD CARRIAGE WHEELBASE MIN: 66 IN / 167 CM

STANDARD CARRIAGE WHEELBASE MAX: 84 IN / 213 CM

EXTENDED CARRIAGE WHEELBASE MIN: 83 IN / 210 CM\*

EXTENDED CARRIAGE WHEELBASE MAX: 102 IN / 259 CM\*

AIR REQUIREMENTS: 100 PSI

OPERATING TEMP RANGE: 32 TO 158 F/0 TO 70 C

TIMING ACCURACY: +/-1 MICROSECOND

DRUM SPEED ACCURACY: +/-1/100TH MPH

RPM ACCURACY: +/-1/10TH RPM

POWER REQUIREMENTS:

240 VOLT, 30 AMP SINGLE PHASE



**THE CARLSON COMPANY**  
Your Source For Professional Service Equipment

800-222-6199 • 949-768-3333 • Fax 949-768-3336

[www.TheCarlsonCompany.com](http://www.TheCarlsonCompany.com)

## ABOVE GROUND STANDARD FEATURES:

- UNLIMITED RATING OF HORSEPOWER AND TORQUE
- MAXIMUM SPEED 200MPH
- DYNOWARE RT DYNAMOMETER ELECTRONICS AND HARDWARE
- POWERCORE SOFTWARE SUITE WITH WINPEP 8 TO INTERFACE (PC, PRINTER, ETC. NOT INCLUDED)
- 14 EXPANSION PORTS FOR DYNOWARE RT ACCESSORIES AND DJCAN DEVICES (SUCH AS POWER COMMANDER, POWER VISION, AUTOTUNE, ETC.)

- EDDY CURRENT LOAD ABSORPTION UNIT
- POWDER COATED CHASSIS, WHEELBASE CAPABILITY UP TO 84 IN (FROM FRONT OF FRONT TIRE TO REAR AXLE)
- INTEGRATED CONTROL PANEL STAND WITH CONSOLE
- IGNITION WIRE INDUCTIVE TACHOMETER PICKUP LEADS
- FRONT WHEEL LOCK
- STARTER SYSTEM TO SPIN ROLLER (12V, BATTERY NOT INCLUDED)

## ADDITIONAL FEATURES FOR PIT MODEL:

- POWER CARRIAGE FOR BUTTON OPERATED WHEELBASE ADJUSTMENT
- PIT COVERS
- COMPACT DESIGN ALLOWS FOR SMALLER PIT SIZE




**THE CARLSON COMPANY**  
 Your Source For Professional Service Equipment  
 800-222-6199 • 949-768-3333 • Fax 949-768-3336  
[www.TheCarlsonCompany.com](http://www.TheCarlsonCompany.com)

**DYNOJET**

// DYNOJET + DYNAMOMETER

+ MOTORCYCLE DYNOS

# MODEL 200iX

## CHASSIS DYNAMOMETER

Dynojet's cutting edge engineering delivers the precise horsepower measurements a technician needs to make quick and accurate evaluations of engine and drive-train performance. This allows you to maximize your shop's potential with increased sales, service efficiency, and shop credibility. The dyno's durable, low-maintenance construction ensures that you will be investing in many years of flawless tuning and troubleshooting. By eliminating the need for engine removal, the vehicle mounting time is as little as five minutes.

A technician can then perform a simple test and examine the results right in the shop. Utilizing the Dynojet WinPEP software, the dyno operator can evaluate the entire drive-train condition for the purpose of routine servicing or all-out performance.

\*WHEELBASE MEASURED FROM FRONT OF FRONT TIRE TO REAR AXLE  
EXTENDED CARRIAGE IS OPTIONAL\*

### SPECIFICATIONS:

MAXIMUM HORSEPOWER / TORQUE: UNLIMITED

MAXIMUM SPEED: 200 MPH / 322 KPH

DRUM DIAMETER: 18 IN / 45.72 CM

DRUM WIDTH: 16.37 IN / 41.59 CM

DRUMS: 2

MAXIMUM AXLE WEIGHT: N/A

STANDARD CARRIAGE WHEELBASE MIN: 66 IN / 167 CM

STANDARD CARRIAGE WHEELBASE MAX: 84 IN / 213 CM

EXTENDED CARRIAGE WHEELBASE MIN: 83 IN / 210 CM\*

EXTENDED CARRIAGE WHEELBASE MAX: 102 IN / 259 CM\*

AIR REQUIREMENTS: 100 PSI

OPERATING TEMP RANGE: 32 TO 158 F/0 TO 70 C

TIMING ACCURACY: +/-1 MICROSECOND

DRUM SPEED ACCURACY: +/-1/100TH MPH

RPM ACCURACY: +/-1/10TH RPM

STANDARD REAR AXLE INNER WIDTH: 23 IN / 58.4 CM

STANDARD REAR AX OUTER WIDTH: 61 IN / 155 CM

POWER REQUIREMENTS:

240 VOLT, 30 AMP SINGLE PHASE



**THE CARLSON COMPANY**  
Your Source For Professional Service Equipment

800-222-6199 • 949-768-3333 • Fax 949-768-3336

[www.TheCarlsonCompany.com](http://www.TheCarlsonCompany.com)

## ABOVE GROUND STANDARD FEATURES:

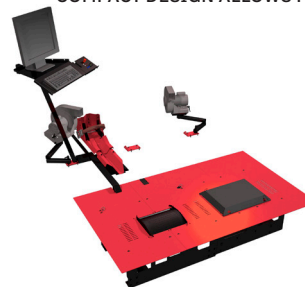
- ACCOMMODATES MOTORCYCLES AND OTHER POWERSPORTS PLATFORMS (TRIKES, ATV'S, UTV'S, AND KARTS)
- UNLIMITED RATING OF HORSEPOWER AND TORQUE
- MAXIMUM SPEED 200MPH
- DYNOWARE RT DYNAMOMETER ELECTRONICS AND HARDWARE
- POWERCORE SOFTWARE SUITE WITH WINPEP 8 TO INTERFACE (PC, PRINTER, ETC. NOT INCLUDED)



- 14 EXPANSION PORTS FOR DYNOWARE RT ACCESSORIES AND DJCAN DEVICES (SUCH AS POWER COMMANDER, POWER VISION, AUTOTUNE, ETC.)
- POWDER COATED CHASSIS, WHEELBASE CAPABILITY UP TO 84 IN (FROM FRONT OF FRONT TIRE TO REAR AXLE)
- INTEGRATED CONTROL PANEL STAND WITH CONSOLE
- IGNITION WIRE INDUCTIVE TACHOMETER PICKUP LEADS
- FRONT WHEEL LOCK
- STARTER SYSTEM TO SPIN ROLLER (12V, BATTERY NOT INCLUDED)

## ADDITIONAL FEATURES FOR PIT MODEL:

- POWER CARRIAGE FOR BUTTON OPERATED WHEELBASE ADJUSTMENT
- PIT COVERS
- COMPACT DESIGN ALLOWS FOR SMALLER PIT SIZE



 **THE CARLSON COMPANY**  
Your Source For Professional Service Equipment  
800-222-6199 • 949-768-3333 • Fax 949-768-3336  
www.TheCarlsonCompany.com

**DYNOJET**



## + MOTORCYCLE DYNOS

# MODEL 250iX

## LOAD CONTROL DYNAMOMETER

The 250iX Powersports Chassis Dynamometer provides the ultimate in powersports dyno tuning/testing capability. With a 61-inch total drum width and sliding carriage, the 250iX can handle most motorcycles, trikes, ATV's, UTV's and karts.

\*WHEELBASE MEASURED FROM FRONT OF FRONT TIRE TO REAR AXLE  
EXTENDED CARRIAGE IS OPTIONAL\*

## SPECIFICATIONS:

MAXIMUM HORSEPOWER / TORQUE: UNLIMITED

MAXIMUM SPEED: 200 MPH / 322 KPH

DRUM DIAMETER: 18 IN / 45.72 CM

DRUM WIDTH: 16.37 IN / 41.59 CM

DRUMS: 2

MAXIMUM AXLE WEIGHT: N/A

STANDARD CARRIAGE WHEELBASE MIN: 66 IN / 167 CM

STANDARD CARRIAGE WHEELBASE MAX: 84 IN / 213 CM

EXTENDED CARRIAGE WHEELBASE MIN: 83 IN / 210 CM\*

EXTENDED CARRIAGE WHEELBASE MAX: 102 IN / 259 CM\*

AIR REQUIREMENTS: 100 PSI

OPERATING TEMP RANGE: 32 TO 158 F/0 TO 70 C

TIMING ACCURACY: +/-1 MICROSECOND

DRUM SPEED ACCURACY: +/-1/100TH MPH

RPM ACCURACY: +/-1/10TH RPM

STANDARD REAR AXLE INNER WIDTH: 23 IN / 58.4 CM

STANDARD REAR AXLE OUTER WIDTH: 61 IN / 155 CM

POWER REQUIREMENTS:

240 VOLT, 30 AMP SINGLE PHASE

## ABOVE GROUND STANDARD FEATURES:

- ACCOMMODATES MOTORCYCLES AND OTHER POWERSPORTS PLATFORMS (TRIKES, ATV'S, UTV'S, AND KARTS)
- UNLIMITED RATING OF HORSEPOWER AND TORQUE
- MAXIMUM SPEED 200MPH
- DYNOWARE RT DYNAMOMETER ELECTRONICS AND HARDWARE
- POWERCORE SOFTWARE SUITE WITH WINPEP 8 TO INTERFACE (PC, PRINTER, ETC. NOT INCLUDED)



- 14 EXPANSION PORTS FOR DYNOWARE RT ACCESSORIES AND DJCAN DEVICES (SUCH AS POWER COMMANDER, POWER VISION, AUTOTUNE, ETC.)
- POWDER COATED CHASSIS, WHEELBASE CAPABILITY UP TO 84 IN (FROM FRONT OF FRONT TIRE TO REAR AXLE)
- INTEGRATED CONTROL PANEL STAND WITH CONSOLE
- IGNITION WIRE INDUCTIVE TACHOMETER PICKUP LEADS
- EDDY CURRENT LOAD ABSORPTION UNIT
- FRONT WHEEL LOCK
- STARTER SYSTEM TO SPIN ROLLER (12V, BATTERY NOT INCLUDED)

## ADDITIONAL FEATURES FOR PIT MODEL:

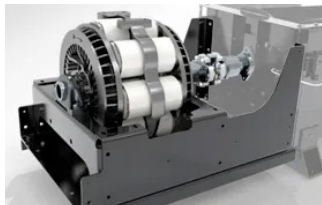
- POWER CARRIAGE FOR BUTTON OPERATED WHEELBASE ADJUSTMENT
- PIT COVERS
- COMPACT DESIGN ALLOWS FOR SMALLER PIT SIZE


**THE CARLSON COMPANY**  
 Your Source For Professional Service Equipment  
 800-222-6199 • 949-768-3333 • Fax 949-768-3336  
[www.TheCarlsonCompany.com](http://www.TheCarlsonCompany.com)

**DYNOJET**

// DYNQJET + DYNAMOMETER

+ ACCESSORIES



## EDDY CURRENT LOAD CONTROL

---

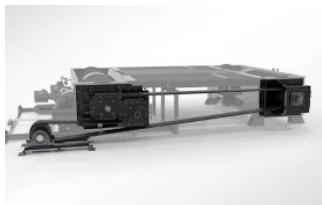
Eddy current absorption unit and all necessary hardware to attach to roller. Perform loaded tests, including step, sweep, and closed loop. (pit or above ground)



## 224XAWD

---

Add to an existing model 224x or 224xLC to gain four wheel drive testing capability. Available for pit or above ground installation. Can accommodate 88" to 130" wheelbase (Optional 98" to 140").



## 424 LINX SYSTEM

---

Mechanically links 424x or 424xLC2 dynos to eliminate potential speed differentials between dyno rollers.

## ROTARY FOUR-POST LIFT (SM-14L)

---

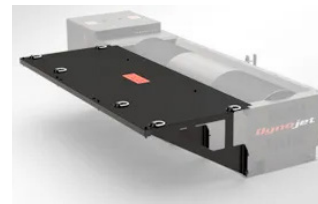
Four-post lift used to raise and lower vehicle for use with an above-ground installed dynamometer. Lift will also function independently from the dyno.



## ABOVE-GROUND PLATFORM KIT

---

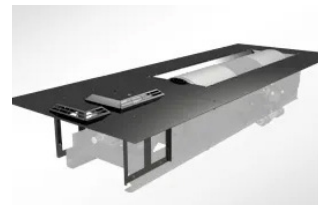
Necessary when using the four-post lift. Consists of a platform for the rear of the dyno with a lift interface kit.



## PIT COVERS

---

Required when installing the dynamometer into a pit/in-ground installation. Covers open areas exposing the dyno roller only.



## + ACCESSORIES



### AIR/FUEL RATIO DUAL MONITOR

---

2 channel module to measure real-time air/fuel using high-flow pump w/ sample tube or bung. Comes with 1 wideband oxygen sensor. Second sensor not included.



### OPTICAL RPM PICKUP

---

Includes magnetic base, optical sensor and reflective tape. Recommended when testing diesel engine vehicles. Can also be used for other purposes such as measuring pulley slip.



### ANALOG CHANNEL ACCESSORIES

---

Analog Sensor Cable Kit (Used for connecting customer supplied 0-5v sensors to DynoWare RT Main Control Module - includes 4 harness kits).

## IR-TEMP SENSOR KIT

---

Includes 1 0-500F sensor, magnetic base and mounting stand.



## O2 SENSOR KITS

---

Includes one wideband O2 sensor with harness for use with AFR-2 for dual air/fuel readings. Available in a 9 in or 12 ft harness length.



## EZ RPM MODULE

---

Receive RPM signal by plugging into cigarette/accessory power port or connect to positive/negative battery posts for RPM signal.







**THE CARLSON COMPANY**

*Your Source For Professional Service Equipment*

800-222-6199 • 949-768-3333 • Fax 949-768-3336

[www.TheCarlsonCompany.com](http://www.TheCarlsonCompany.com)