

2017

DYNAMOMETER CATALOG



**Dynojet**®

POWERSPORTS DYNAMOMETERS | TEST EQUIPMENT  
ACCESSORIES | HARDWARE | SOFTWARE AND TUNING



# ***THE CARLSON COMPANY***

**Your Source For Professional Service Equipment**

PO Box 80897 • Rancho Santa Margarita, CA 92688

Phone: 949-768-3333 • Fax: 949-768-3336

Email: [sales@thecarlsoncompany.com](mailto:sales@thecarlsoncompany.com)

**[www.TheCarlsonCompany.com](http://www.TheCarlsonCompany.com)**

**1-800-222-6199**

***Big Enough to Serve You, Small Enough to Know You!***

# TABLE OF CONTENTS

<b>MODEL 200I</b>	<b>PAGE 4 — 5</b>
<b>MODEL 250I</b>	<b>PAGE 6—7</b>
<b>MODEL 200IX</b>	<b>PAGE 8—9</b>
<b>MODEL 250IX</b>	<b>PAGE 10—11</b>
<b>SD12 SCOOTER DYNAMOMETER</b>	<b>PAGE 12</b>
<b>UPGRADES AND OPTIONS</b>	<b>PAGE 13—17</b>
<b>PRODUCTS AND LICENSES</b>	<b>PAGE 18—19</b>
<b>DYNOWARE RT HARDWARE</b>	<b>PAGE 20—21</b>
<b>POWERCORE SOFTWARE</b>	<b>PAGE 22</b>
<b>WINPEP 8</b>	<b>PAGE 23</b>
<b>C3 SOFTWARE</b>	<b>PAGE 24</b>
<b>TRAINING AND CERTIFICATIONS</b>	<b>PAGE 25</b>



## MODEL 200i CHASSIS DYNAMOMETER

The Model 200i continues the Dynojet tradition of providing a reliable, repeatable, consistent and easy to use chassis Dyno for a quick and accurate diagnosing of performance problems. The Model 200i offers an improved operator interface through the use of the integrated control console, PowerCore Software Suite and a wider platform for easy loading and unloading. Shop sales, service work and credibility all benefit with a Dynojet chassis dynamometer.

A great feature of the 200i is that it can easily be upgraded to the Model 200ix, 250i, or 250iX at any time. This is especially important to NEW business. They can begin with the 200i and upgrade as their business grows.



[WWW.THECARLSONCOMPANY.COM](http://WWW.THECARLSONCOMPANY.COM)



## FEATURES

### ABOVE GROUND STANDARD FEATURES

- MEASURES 750+ HP / TORQUE AND UP TO 200MPH
- POWERCORE SOFTWARE SUITE WITH WINPEP 8 (PC, MONITOR, PRINTER, ETC. NOT INCLUDED)
- DYNOWARE RT DYNAMOMETER ELECTRONICS AND HARDWARE
- 14 EXPANSION PORTS FOR DYNOWARE RT ACCESSORIES AND DJ-CAN DEVICES (SUCH AS POWER COMMANDER, POWER VISION, AUTOTUNE, ETC.)
- POWDER COATED CHASSIS, WHEELBASE CAPABILITY UP TO 84 IN (FROM REAR AXLE TO FRONT TIRE)

- INTEGRATED CONTROL PANEL STAND WITH CONSOLE
- IGNITION WIRE INDUCTIVE TACHOMETER PICKUP LEADS
- FRONT WHEEL LOCK
- STARTER SYSTEM TO SPIN ROLLER (12V, BATTERY NOT INCLUDED)

### ADDITIONAL FEATURES FOR PIT MODEL

- POWER CARRIAGE FOR BUTTON OPERATED WHEELBASE ADJUSTMENT
- PIT COVERS
- COMPACT DESIGN ALLOWS FOR SMALLER PIT SIZE

## SPECIFICATIONS

MAXIMUM HORSEPOWER/TORQUE	750 HP/750 FT LBS
MAXIMUM SPEED	200 MPH/322 KPH
DRUM DIAMETER	18 IN/45.72 CM
DRUM WIDTH	16.37 IN/41.59 CM
DRUMS	1
MAXIMUM AXLE WEIGHT	N/A
STANDARD CARRIAGE WHEELBASE MINIMUM	66 IN/167 CM
STANDARD CARRIAGE WHEELBASE MAXIMUM	84 IN/213 CM
EXTENDED CARRIAGE WHEELBASE MINIMUM	83 IN/210 CM *
EXTENDED CARRIAGE WHEELBASE MAXIMUM	102 IN/259 CM *
AIR REQUIREMENTS	100 PSI
OPERATING TEMP RANGE	32 TO 158 F/0 TO 70 C
TIMING ACCURACY	+/-1 MICROSECOND
DRUM SPEED ACCURACY	+/-1/100TH MPH
RPM ACCURACY	+/-1/10TH RPM 1/10TH RPM

\* EXTENDED CARRIAGE IS OPTIONAL



## MODEL 250i LOAD CONTROL DYNAMOMETER

The 250i Load Control System was developed through years of experience with over 6,000 dynamometer installations world wide. The design is easy to operate and provide the function of steady state load control.

Dynojet's Load Control System uses the latest in Eddy Current Power Absorption technology, which combines with our easy to use software, so any technician can get repeatable, consistent results. The Load Control software provides the technician with the ability to control vehicle RPM or Speed at any throttle opening. Through our exclusive closed-loop software design, the vehicle is automatically held at your pre-determined setting.

SHOWN WITH OPTIONAL FANS, POWER CARRIAGE,  
POWER CLAMP AND INTEGRATED AFR-2

## EDDY CURRENT LOAD ABSORPTION UNIT

CONTROL VEHICLE RPM OR SPEED  
AT ANY THROTTLE OPENING.

TOLL FREE 1-800-222-6199



## FEATURES

### ABOVE GROUND STANDARD FEATURES

- MEASURES 750+ HP / TORQUE AND UP TO 200MPH
- EDDY CURRENT LOAD ABSORPTION UNIT
- POWERCORE SOFTWARE SUITE WITH WINPEP 8 (PC, MONITOR, PRINTER, ETC. NOT INCLUDED)
- DYNOWARE RT DYNAMOMETER ELECTRONICS AND HARDWARE
- POWDER COATED CHASSIS, WHEELBASE CAPABILITY UP TO 84 IN (FROM REAR AXLE TO FRONT TIRE)
- INTEGRATED CONTROL PANEL STAND WITH CONSOLE
- IGNITION WIRE INDUCTIVE TACHOMETER PICKUP LEADS

- FRONT WHEEL LOCK
- 14 EXPANSION PORTS FOR DYNOWARE RT ACCESSORIES AND DJ-CAN DEVICES (SUCH AS POWER COMMANDER, POWER VISION, AUTOTUNE, ETC.)
- STARTER SYSTEM TO SPIN ROLLER (12V, BATTERY NOT INCLUDED)

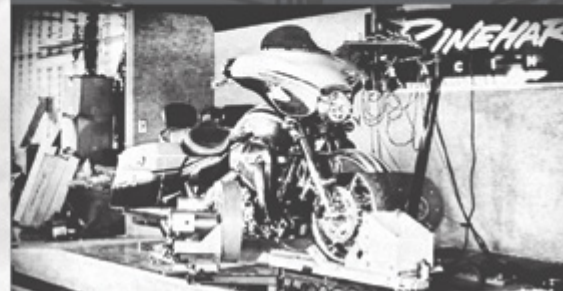
### ADDITIONAL FEATURES FOR PIT MODEL

- POWER CARRIAGE FOR BUTTON OPERATED WHEELBASE ADJUSTMENT
- PIT COVERS
- COMPACT DESIGN ALLOWS FOR SMALLER PIT SIZE

## SPECIFICATIONS

MAXIMUM HORSEPOWER/TORQUE	750 HP/750 FT LBS
MAXIMUM SPEED	200 MPH/322 KPH
DRUM DIAMETER	18 IN/45.72 CM
DRUM WIDTH	16.37 IN/41.59 CM
DRUMS	1
MAXIMUM AXLE WEIGHT	N/A
STANDARD CARRIAGE WHEELBASE MINIMUM	66 IN/167 CM
STANDARD CARRIAGE WHEELBASE MAXIMUM	84 IN/213 CM
EXTENDED CARRIAGE WHEELBASE MINIMUM	83 IN/210 CM*
EXTENDED CARRIAGE WHEELBASE MAXIMUM	102 IN/259 CM*
AIR REQUIREMENTS	100 PSI
OPERATING TEMP RANGE	32 TO 158 F/0 TO 70 C
TIMING ACCURACY	+/-1 MICROSECOND
DRUM SPEED ACCURACY	+/-1/100TH MPH
RPM ACCURACY	+/-1/10TH RPM

\* EXTENDED CARRIAGE IS OPTIONAL



## MODEL 200iX CHASSIS DYNAMOMETER

Dynojet's cutting edge engineering delivers the precise horsepower measurements a technician needs to make quick and accurate evaluations of engine and drive-train performance. This allows you to maximize your shop's potential with increased sales, service efficiency, and shop credibility. The dyno's durable, low-maintenance construction ensures that you will be investing in many years of flawless tuning and troubleshooting. By eliminating the need for engine removal, the vehicle mounting time is as little as 5 minutes.

A technician can then perform a simple test and examine the results right in the shop. Utilizing the Dynojet WinPEP software, the dyno operator can evaluate the entire drive-train condition for the purpose of routine servicing or all-out performance.

THE 200iX DYNAMOMETER ADDS AN EXTRA DRUM AND SLIDING CARRIAGE TO ACCOMMODATE ATV'S, TRIKES, SIDE-BY-SIDES, AND MOTORCYCLE.

SHOWN WITH OPTIONAL  
FANS, MONITOR TRAY AND  
INTEGRATED AFR-2



## SPECIFICATIONS

MAXIMUM HORSEPOWER/TORQUE	750 HP/750 FT LBS
MAXIMUM SPEED	200 MPH/322 KPH
DRUM DIAMETER	18 IN/45.72 CM
DRUM WIDTH	16.37 IN/41.59 CM
DRUMS	2
MAXIMUM AXLE WEIGHT	N/A
STANDARD CARRIAGE WHEELBASE MINIMUM	66 IN/167 CM
STANDARD CARRIAGE WHEELBASE MAXIMUM	84 IN/213 CM
EXTENDED CARRIAGE WHEELBASE MINIMUM	83 IN/210 CM *
EXTENDED CARRIAGE WHEELBASE MAXIMUM	102 IN/259 CM *
AIR REQUIREMENTS	100 PSI
OPERATING TEMP RANGE	32 TO 158 F/0 TO 70 C
TIMING ACCURACY	+/-1 MICROSECOND
DRUM SPEED ACCURACY	+/-1/100TH MPH
RPM ACCURACY	+/-1/10TH RPM

\* EXTENDED CARRIAGE IS OPTIONAL



## FEATURES

### ABOVE GROUND STANDARD FEATURES

- ACCOMMODATES MOTORCYCLES AND MOST OTHER POWERSPORTS PLATFORMS (ATV'S, SIDE-BY-SIDES, GO-KARTS, AND TRIKES)
- MEASURES 750+ HP / TORQUE AND UP TO 200MPH
- POWERCORE SOFTWARE SUITE WITH WINPEP 8 (PC, MONITOR, PRINTER, ETC. NOT INCLUDED)
- DYNOWARE RT DYNAMOMETER ELECTRONICS AND HARDWARE
- 14 EXPANSION PORTS FOR DYNOWARE RT ACCESSORIES AND DJ-CAN DEVICES (SUCH AS POWER COMMANDER, POWER VISION, AUTOTUNE, ETC.)
- POWDER COATED CHASSIS, WHEELBASE CAPABILITY UP TO 84 IN (FROM REAR AXLE TO FRONT TIRE)

- INTEGRATED CONTROL PANEL STAND WITH CONSOLE
- IGNITION WIRE INDUCTIVE TACHOMETER PICKUP LEADS
- FRONT WHEEL LOCK
- STARTER SYSTEM TO SPIN ROLLER (12V, BATTERY NOT INCLUDED)

### ADDITIONAL FEATURES FOR PIT MODEL

- POWER CARRIAGE FOR BUTTON OPERATED WHEELBASE ADJUSTMENT
- PIT COVERS
- COMPACT DESIGN ALLOWS FOR SMALLER PIT SIZE

## MODEL 250iX LOAD CONTROL DYNAMOMETER

The 250iX Powersports Chassis Dynamometer provides the ultimate in powersports dyno tuning/testing capability. With a 61 inch total drum width and sliding carriage, the 250iX can handle most UTV's, ATV's, Karts, Trikes and Motorcycles. Available for above-ground or pit installation.

SHOWN WITH OPTIONAL FANS, AND INTEGRATED AFR-2.

### EDDY CURRENT LOAD ABSORPTION UNIT

CONTROL VEHICLE RPM OR SPEED  
AT ANY THROTTLE OPENING.

**TOLL FREE 1-800-222-6199**

## FEATURES

### ABOVE GROUND STANDARD FEATURES

- ACCOMMODATES MOTORCYCLES AND MOST OTHER POWERSPORTS PLATFORMS (ATV'S, SIDE-BY-SIDES, GO-KARTS, AND TRIKES)
- MEASURES UP TO 750HP AND 200MPH
- EDDY CURRENT LOAD ABSORPTION UNIT
- POWERCORE SOFTWARE SUITE WITH WINPEP 8 (PC, MONITOR, PRINTER, ETC. NOT INCLUDED)
- DYNOWARE RT DYNAMOMETER ELECTRONICS AND HARDWARE
- 14 EXPANSION PORTS FOR DYNOWARE RT ACCESSORIES AND DJ-CAN DEVICES (SUCH AS POWER COMMANDER, POWER VISION, AUTOTUNE, ETC.)

- POWDER COATED CHASSIS, WHEELBASE CAPABILITY UP TO 84 IN (FROM REAR AXLE TO FRONT TIRE)
- INTEGRATED CONTROL PANEL STAND WITH CONSOLE
- IGNITION WIRE INDUCTIVE TACHOMETER PICKUP LEADS
- FRONT WHEEL LOCK
- STARTER SYSTEM TO SPIN ROLLER (12V, BATTERY NOT INCLUDED)

### ADDITIONAL FEATURES FOR PIT MODEL

- POWER CARRIAGE FOR BUTTON OPERATED WHEELBASE ADJUSTMENT
- PIT COVERS
- COMPACT DESIGN ALLOWS FOR SMALLER PIT SIZE

**AVAILABLE IN A WIDER WIDTH  
250iXW WITH WIDTH 35IN INNER AND 73IN OUTER**



## SPECIFICATIONS

MAXIMUM HORSEPOWER/TORQUE	750 HP/750 FT LBS
MAXIMUM SPEED	200 MPH/322 KPH
DRUM DIAMETER	18 IN/45.72 CM
DRUM WIDTH	16.37 IN/41.59 CM
DRUMS	2
MAXIMUM AXLE WEIGHT	N/A
STANDARD CARRIAGE WHEELBASE MINIMUM	66 IN/167 CM
STANDARD CARRIAGE WHEELBASE MAXIMUM	84 IN/213 CM
EXTENDED CARRIAGE WHEELBASE MINIMUM	83 IN/210 CM *
EXTENDED CARRIAGE WHEELBASE MAXIMUM	102 IN/259 CM*
AIR REQUIREMENTS	100 PSI
OPERATING TEMP RANGE	32 TO 158 F/0 TO 70 C
TIMING ACCURACY	+/-1 MICROSECOND
DRUM SPEED ACCURACY	+/-1/100TH
MPH RPM ACCURACY	+/-1/10TH RPM
<b>STANDARD REAR AXLE WIDTH</b>	
INNER	23 IN/58.4 CM
OUTER	61 IN/155 CM
<b>IXW REAR AXLE WIDTH</b>	
INNER	35 IN/89 CM
OUTER	73 IN/185.4 CM

\* EXTENDED CARRIAGE IS OPTIONAL

## SPECIFICATIONS

MAX POWER	25KW (33.5HP)
MAX TORQUE	45 NM (33.5 LB-FT)
MAX SPEED	175 KM/HR (109 MPH)
LENGTH UNFOLDED WITH RAMP DOWN	132 IN/335 CM
LENGTH WITH RAMP UP	99 IN/251 CM
TOTAL LENGTH FOLDED	21 IN/533 CM
TOTAL WIDTH FOLDED	24 IN/61 CM
TOTAL WIDTH UNFOLDED	34 IN/86 CM
TOTAL HEIGHT FOLDED	83 IN/211 CM
TOTAL HEIGHT UNFOLDED	24 IN/61 CM
WEIGHT	437 LBS/198.22 KG
MINIMUM AND MAXIMUM WHEELBASE	64-74 IN/152-188 CM
BRAKE TYPE	SPRING TYPE MECHANICAL BAND
POWER REQUIREMENTS	110-220 VAC



# SD12 SCOOTER DYNAMOMETER

The SD12 has a clever fold-up design with rollers, enabling it to be easily moved for use and storage, maximizing space inside the workshop.

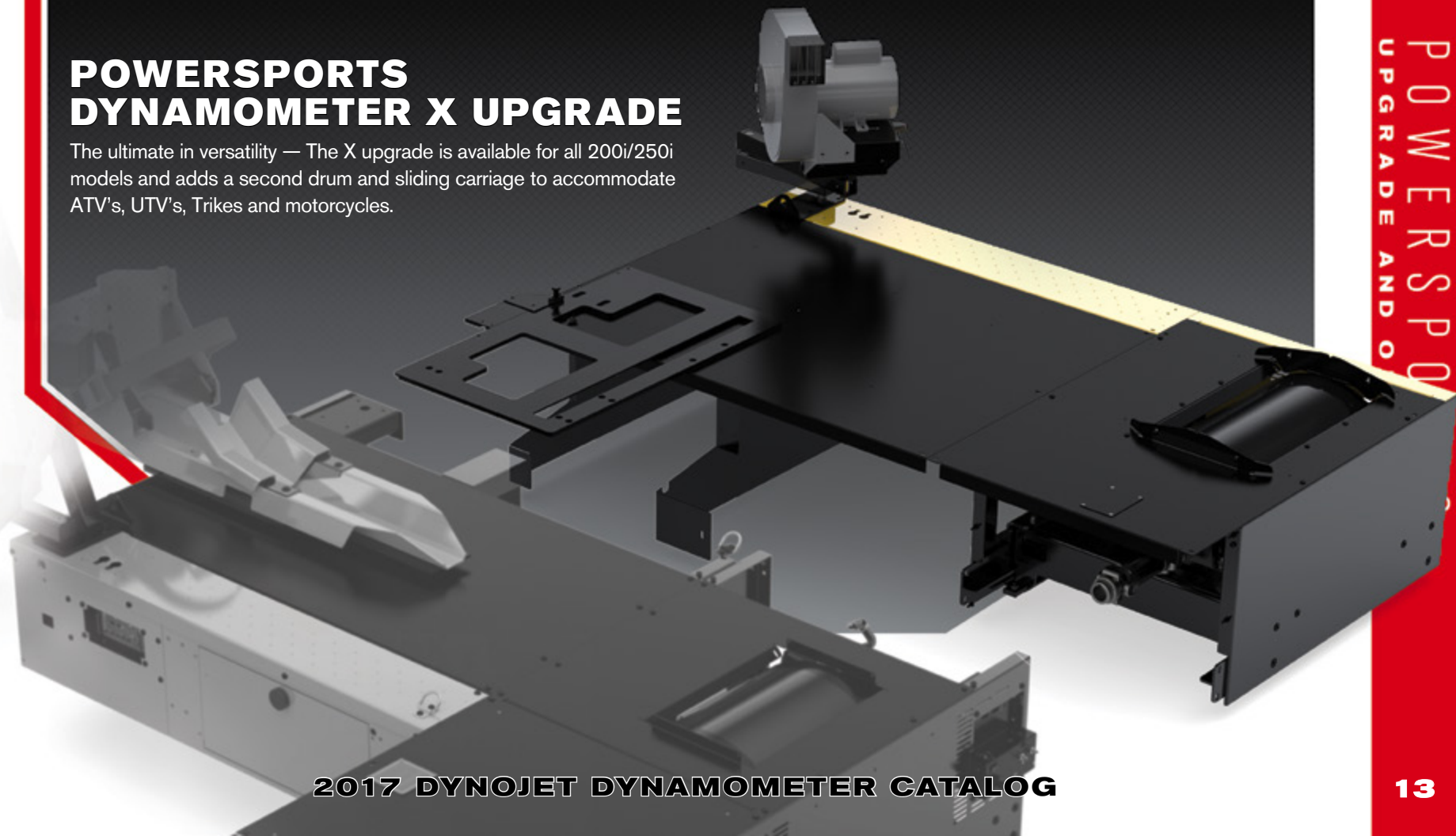
The SD12 comes with a folding ramp and foot activated brake as standard features and can accommodate wheelbases from 60 to 74in. The SD12 uses our proven WINPEP 8 software and DynoWare RT electronics for accurate and repeatable measurement of horsepower, torque, and speed. The Dynojet Air/Fuel Ratio Monitor can be used with the SD12.



**WWW.THECARLSONCOMPANY.COM**

# POWERSPORTS DYNAMOMETER X UPGRADE

The ultimate in versatility — The X upgrade is available for all 200i/250i models and adds a second drum and sliding carriage to accommodate ATV's, UTV's, Trikes and motorcycles.



POWERSPORTS  
UPGRADE AND O

### EXTENDED WHEELBASE CARRIAGE

Accommodates 102in wheelbase measured from rear axle to front tire.



### POWER CARRIAGE

Motor driven carriage controlled from control panel for adjusting wheelbase without stepping off the motorcycle.



### POWER WHEEL CLAMP

Motor driven wheel clamp controlled through the control panel for securing front wheel without stepping off the motorcycle.



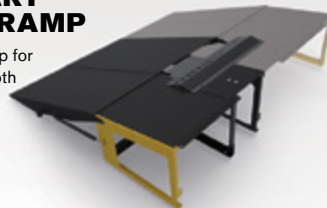
### PRIMARY FOLDING RAMP

Gas strut assisted folding ramp bolts directly to the dynamometer.



### SECONDARY FOLDING RAMP

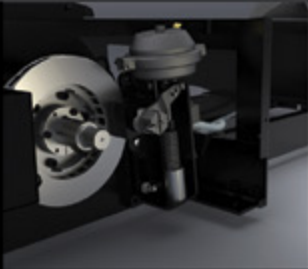
Supplemental ramp for X model dynos (both ramps required).



### AIR BRAKE

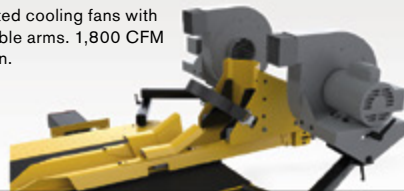
Air actuated disk brake used for slowing drum.

*Not necessary with 250i series dynos.*



### DUAL COOLING FAN SYSTEM

Integrated cooling fans with adjustable arms. 1,800 CFM each fan.



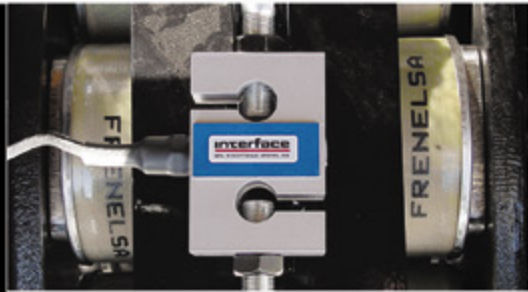
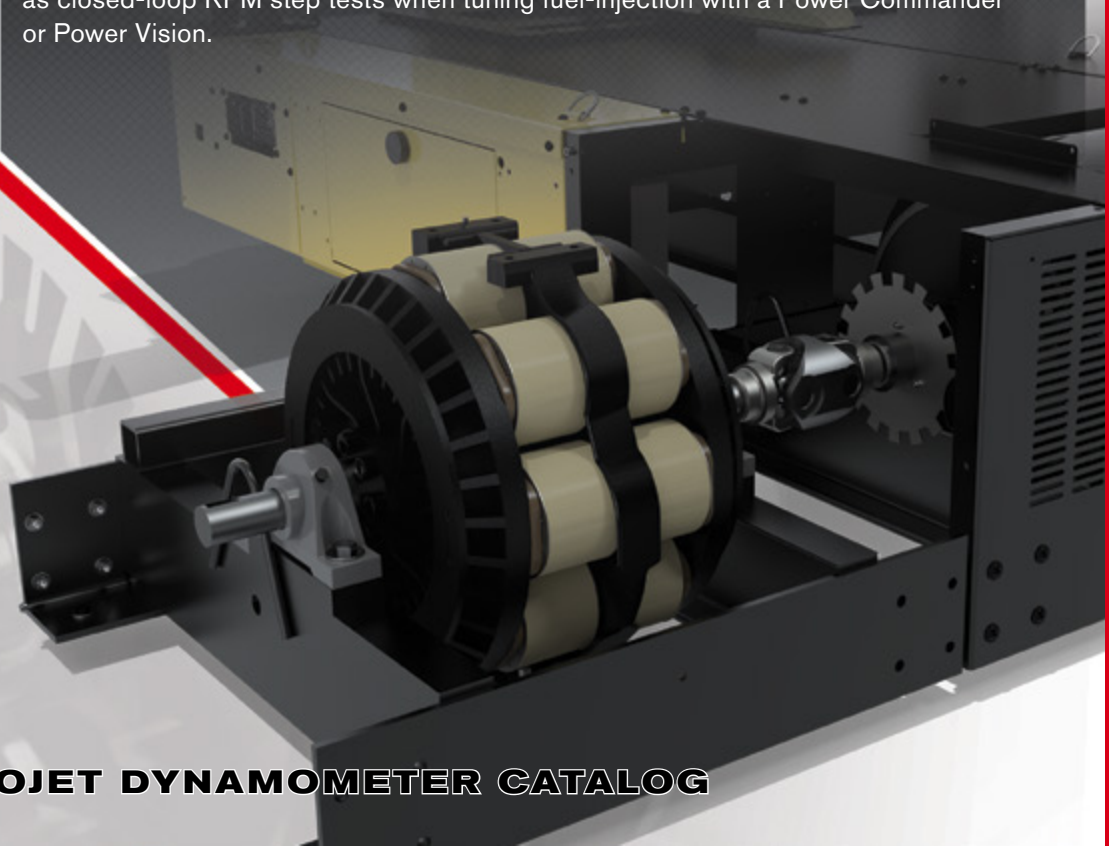
### MONITOR TRAY

Bolts onto the control panel arm and holds the monitor, keyboard and mouse.



## EDDY CURRENT LOAD ABSORPTION UNIT

The Eddy Current Load Absorption Unit can be upgraded to any Dynojet inertia model, such as the 200/200i/200iX, and enables the ability to perform loaded tests such as closed-loop RPM step tests when tuning fuel-injection with a Power Commander or Power Vision.



## TORQUE CELL MODULE

Measures real-time torque, and allows sweep, step and custom load simulation tests.

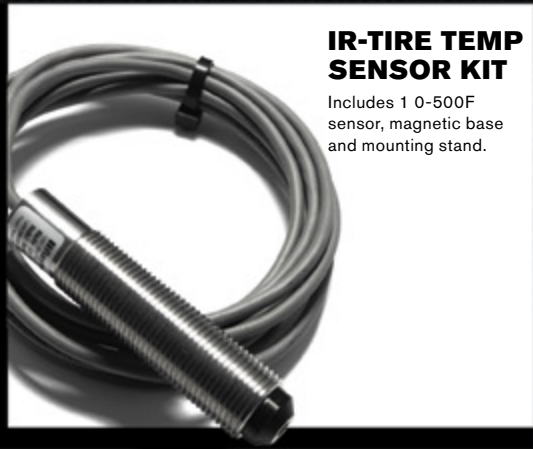




## AFR-2 (DUAL AIR/FUEL SYSTEM)

**AFR-2 MODULE MEASURES UP TO TWO AIR/FUEL RATIO READINGS SIMULTANEOUSLY!**

The AFR-2 has two wide band O2 sensor inputs so you can sample two air/fuel ratios at the same time for measuring for V-Twin engines. The AFR-2 uses the DJ-CAN system, which allows you to daisy-chain multiple AFR-2 modules to read up to 8 AFR's. The AFR-2 houses the Gen4 air pump system and comes standard with one O2 sensor. Additional sensors can be purchased at a low cost.



### IR-TIRE TEMP SENSOR KIT

Includes 1 0-500F sensor, magnetic base and mounting stand.



### O2 SENSOR KITS

Includes one wideband O2 sensor with harness for use with AFR-2 for dual air/fuel readings. Available in a 6ft or 12 ft harness length.

O2 Sensor Test Gas Kit available.



## ANALOG CHANNEL ACCESSORIES

DynoWare RT comes standard with four (4) analog inputs for 0-5v sensors. Sensor kits are available for connecting Dynojet analog sensors or customer supplied sensors to DynoWare RT.



**Analog Sensor Cable Kit** — Includes four (4) complete harnesses for connecting up to four customer supplied 0-5v analog sensors to DynoWare RT.



**-14.7-45psi Pressure Sensor Kit** — Includes one (1) sensor and harness  
**0-100psi Pressure Sensor Kit** — Includes one (1) sensor and harness.



## H-D FUEL TAP

Dynojet's H-D Fuel Tap is a system for fuel injected Harley-Davidson® motorcycles designed to measure and synchronize fuel pressure readings with other data while conducting dyno tests. Utilizes a precision 0-100 psi pressure transducer and quick disconnects for fast, easy installation and accurate results. Stop tuning a round a "problem area" and ensure the fuel system is performing as designed.



## ON-BOARD DIAGNOSTIC CABLES

These cables allow the end user to plug into the On Board Diagnostic connector of the motorcycle to read and/or clear codes and view certain channels. An over the counter OBD diagnostic tool is required. Make sure this tool is CAN compatible use with Dynojet OBDII Data-Link to input vehicle data into WinPEP8

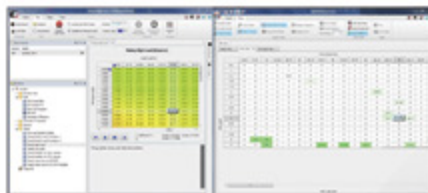
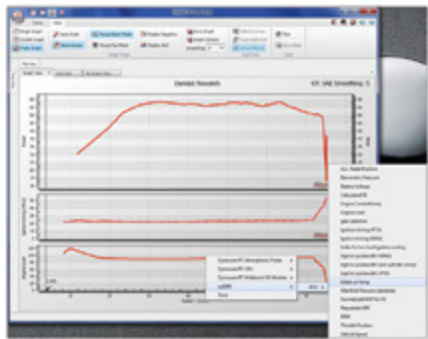
## OBDII DATA-LINK INTERFACE

Use the Dynojet OBDII Data-Link with the Dynojet On-Board Diagnostic Cables to use vehicle ECM data real-time in WinPEP 8.



## INDUCTIVE RPM CONNECTION KIT

This new harness kit aids dyno operators in establishing engine RPM signals with select motorcycles. Each harness uses OEM style connectors, plugs in-line with the stock ignition system, and the non-loomed wiring makes it easy for the Dynojet Inductive RPM to clamp onto. Works with several motorcycles: Denso coil ignitions, Ducati, KTM, Polaris, Can-Am, BMW, Aprilia and Harley-Davidson®.



**DJ-CAN PRODUCTS SUCH AS THE POWER COMMANDER V, POWER VISION, AND WIDEBAND2 CAN BE PLUGGED DIRECTLY INTO DYNOWARE RT.**

This allows you to view and sample all available channels on the device. This includes; injector duty cycle, throttle position, air/fuel ratio (when equipped with AutoTune) and more! You can use engine RPM from a Power Commander V as your primary dyno RPM so you don't have to use the inductive RPM cable!



**H-D DATA LINK**

Connect any Delphi equipped Harley-Davidson® (CAN & J1850) to DynoWare RT to read and sample live data direct from the bike! Whether you are making EFI calibrations, diagnosing a problem or simply getting a horsepower reading, the H-D Data Link gives you more data such as volumetric efficiency, spark advance, cylinder temp, and more.

Power Vision Tuner Kit can also function as the H-D Data Link





## POWER VISION AUTOMATED TUNE LICENSE PROGRAM SAVES TIME, KEEPS COST LOW, AND MAXIMIZES PROFIT.

Acquiring and loading a Tune License into your Power Vision is quicker and easier than before. Simply launch WinPV, click on the PV Online icon, and in a few steps you're ready to tune. If you need additional Tune Licenses, log into your account and purchase them. Every step of the process is now handled online, at your convenience.

Use one Power Vision to tune multiple bikes! There is NO limit to the amount of ECM's that can be tuned with a single Power Vision. Each bike to be tuned requires the purchase of a Tune License, however, the Tune License allows you to continue to flash tunes to each licensed vehicle as many times as you'd like.



### POWER VISION TUNER KIT

Dynojet offers the Power Vision Tuner Kit that includes everything you need to start flash tuning Harley-Davidson® motorcycles.

This comprehensive kit is perfect for small independent shops or franchised dealers looking to minimize the headaches and maximize profits. Included is a Power Vision, AutoTune Pro Module, and all necessary cables in order to tune J1850 or CAN models.

### STEALTH EXTRACTION INTERFACE KIT

Tired of welding bungs, destroying baffles, or otherwise finding a way to get an accurate exhaust gas sample for tuning purposes?

Dynojet has the answer with the Stealth Extraction Interface Kit. Includes professional grade Riv-Nut tool, drill bit, 50 pieces of consumables (bolts, washers, Riv-Nuts, etc), specialty bolts, and billet manifold interfaces.



# DynoWare RT



## DYNOWARE RT

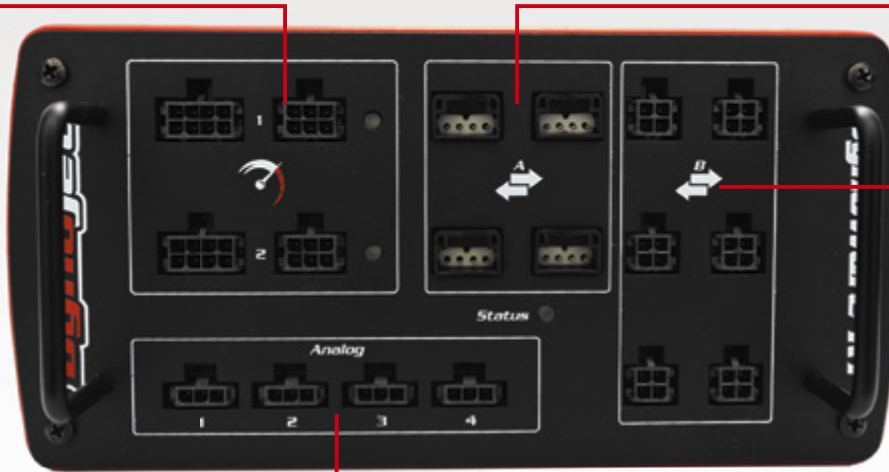
DynoWare RT is the next generation of Dynojet dynamometer electronics and provides dyno owners with several features such as: high-speed Ethernet communications to PC, wireless network capability, multiple expansion ports for current and future upgrades, updateable firmware/software via online, built-in true 0-5v Analog Channels and more. The dyno's configuration file is now embedded inside the DynoWare RT module, so now you can simply connect to any PC that has PowerCore installed. DynoWare comes standard with new Dynojet dynamometers and is available as an upgrade for existing Dynojet models.

# FEATURES

**TWO INDUCTIVE RPM INPUTS (UP TO 30,000 RPM).**

Acquire engine RPM using drum speed. Includes two (2) primary and two (2) secondary inductive RPM cables for use with various ignition types including coil on plug.

**OPTICAL RPM INPUTS (UP TO 30,000 RPM).** For use with Dynojet Optical RPM accessory (not included).



**FOUR DJ-CAN (DYNOJET CONTROLLER AREA NETWORK) EXPANSION PORTS**

To connect Dynojet performance electronics such as Power Commander V, Power Vision and WideBand2.

**SIX DYNOWARE EXPANSION PORTS**

**FOUR INDEPENDENT 0-5V ANALOG INPUTS.** Sensors not included. Accessory plug-and-play Dynojet Sensor Kits available for measuring pressure (boost or fuel). Analog Sensor Cable Kit also available to connect customer supplied 0-5 analog sensors to DynoWare RT.

**ETHERNET COMMUNICATIONS**

**WIRELESS NETWORK CAPABILITY** Connect a wireless router to DynoWare RT to control the dyno and PowerCore using a laptop, desktop or tablet PC. Update firmware and software through a internet network.

**TWO INFRARED TEMPERATURE SENSOR INPUTS.**

**POWERCORE SOFTWARE SUITE WITH WINPEP 8 DYNO CONTROL, DATA CENTER AND C3 TUNING SOFTWARE INCLUDED WITH DYNOWARE RT.**





SELECTABLE AIR/FUEL DATA SOURCE - DYNOWARE RT AFR-2 OR DJ-CAN DEVICES



# POWER CORE SOFTWARE SUITE



PowerCore is a PC based application that provides Dynojet dyno owners with the most advanced tuning software platform available in the industry! Control the dyno, analyze data, adjust/create calibrations and maps for Dynojet products and utilize real-time on-board data from vehicles running on the dyno.

## WinPEP8



### WINPEP 8 DYNO CONTROL

Connects PowerCore to DynoWare RT; shows data live on gauges, starts/stops sampling, and sets up other functions such as load control and other dyno specific functions.

- SELECTABLE RPM SOURCE USED FOR LOGGING/LOAD CONTROL – INDUCTIVE, OR DJ-CAN DEVICES SUCH AS THE POWER COMMANDER V.
- CHANNEL SUPPORT FOR DJ-CAN DEVICES – READ AND SAMPLE LIVE DATA FROM THE VEHICLE WHILE USING A POWER COMMANDER V OR POWER VISION.
- EDITABLE GAUGE SCREEN WITH USER DEFINED DATA CHANNEL SELECTION, SCALING AND MORE.

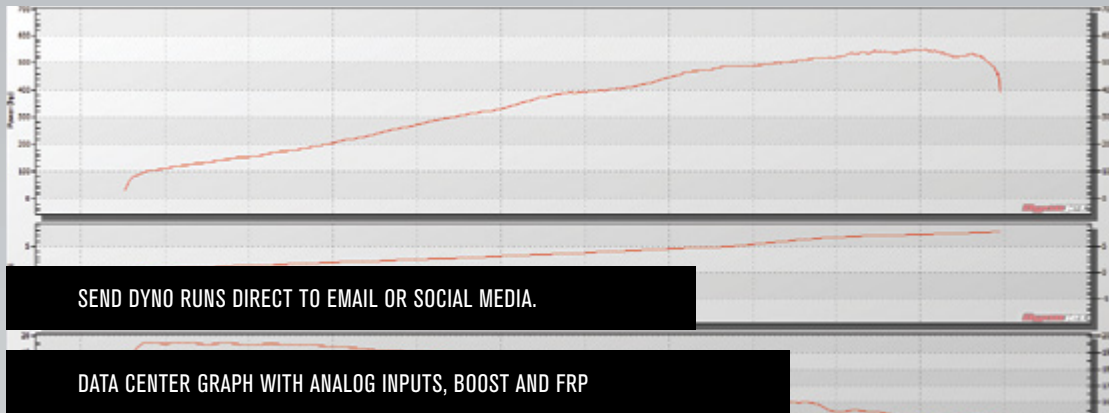
**TOLL FREE 1-800-222-6199**



## WINPEP 8 DATA CENTER

Provides enhanced viewing and analysis tools for dyno runs, DJ-CAN devices, .csv format data logs, and 3rd party sources. Views include graph/trace, table, and 3-D visualization.

- SYNCHRONIZE DATA CHANNELS FROM THE DYNOWARE RT SYSTEM IN PERFECT ALIGNMENT WITH CHANNELS FROM SUPPORTED SYSTEMS, GIVING THE ABILITY TO SEE WHAT HAPPENED AND WHERE. BECOME A BETTER TUNER AS A RESULT OF GETTING BETTER DATA.
- CUSTOMIZATION OPTIONS ALLOW USERS TO ADJUST THE SOFTWARE FORMAT AND VIEWING TO THEIR LIKING, AND PROVIDES BETTER EXPORT VIEWING, PRINTING AND MORE.
- BACKWARDS COMPATIBLE TO ALL PREVIOUS WINPEP AND DOSPEP DYNO RUNS, SO USERS CAN USE PREVIOUS DYNO RUN FILES.

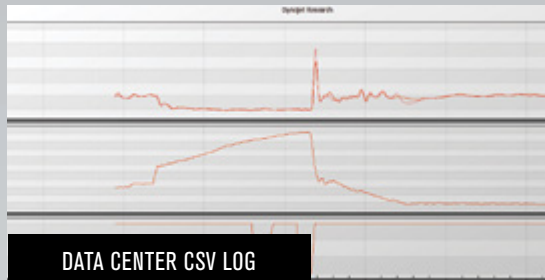


SEND DYNO RUNS DIRECT TO EMAIL OR SOCIAL MEDIA.

DATA CENTER GRAPH WITH ANALOG INPUTS, BOOST AND FRP

LOAD UP TO 12 DYNO RUNS OR DATA LOGS, EACH OF WHICH CAN CONTAIN UP TO 40 CHANNELS – DYNOWARE RT AFR-2 OR DJ-CAN DEVICES

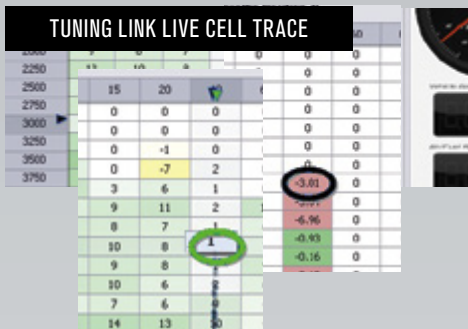
GRID VIEW



DATA CENTER CSV LOG



CONFIGURE – CALIBRATE – CONTROL



## C3 TUNING SOFTWARE (CONFIGURE-CALIBRATE-CONTROL)

DYNOJET'S C3 SOFTWARE INTERFACES THE DYNAMOMETER WITH OTHER DYNOJET PRODUCTS SUCH AS POWER COMMANDER AND POWER VISION. THIS TAKES DYNO TUNING TO A NEW LEVEL!

- CREATE CALIBRATIONS & COMPARE THEM SIDE BY SIDE
- CONFIGURE POWER COMMANDER ADVANCED MAPS FOR 4 CYLINDER ENGINES TO USE DUAL AUTOTUNE
- EDIT & FLASH POWER VISION CALIBRATIONS DIRECT TO THE ECM
- AUTOMATICALLY SYNCs CHANNEL AXIS WITH DATA CENTER FOR EASE OF TUNING
- DATA LOG CHANNELS AND DISPLAY THEM IN GRAPH FORM INSIDE DATA CENTER
- AUTOMATIC ONLINE UPDATES

## DYNOJET'S PROPRIETY TUNING LINK SOFTWARE IS INCLUDED IN C3!

- CREATE MAPS WITH UP TO 30 THROTTLE POSITION COLUMNS AND ANY VALUE DESIRED.
- PERCENTAGE CORRECTION – PICK A DESIRED ALLOWED TARGET ERROR PERCENTAGE (FOR EXAMPLE 2% OF YOUR TARGET AFR) FOR SPEEDIER AND MORE EFFICIENT FUEL MAPPING.
- AUTOTUNE FUNCTION – SIMPLY RIDE THE BIKE ON THE DYNO FOR NON CELL-SPECIFIC MAPPING AND USE TUNING LINK TO TUNE ABRUPT THROTTLE TRANSITIONS AND OTHER RIDING CONDITIONS.
- MAP TWIN CYLINDERS SIMULTANEOUSLY
- DESIGNATE A TARGET AFR FOR EVERY MAP CELL

[WWW.THECARLSONCOMPANY.COM](http://WWW.THECARLSONCOMPANY.COM)



## APPROVED POWER COMMANDER TUNING CENTERS

THE POWER COMMANDER HAS BEEN THE #1 CHOICE FOR EFI TUNING EVER SINCE FUEL INJECTION BECAME AVAILABLE AS ORIGINAL EQUIPMENT BY POWERSPORTS MANUFACTURERS.

This course certifies Dynojet Dynamometer owners (250 model and above) as Dynojet Approved Power Commander Tuning Centers. It consists of 3-days of advanced Power Commander training and is a combination of classroom and hands-on dyno time. The course covers all models of Power Commanders and their accessories. Learn everything from proper installation to making custom maps using a Dynojet dyno with Power Commander and dyno software.



## AUTHORIZED POWER COMMANDER DEALERS

This 1/2 day training course available in your area or at your location (contact Dynojet for availability). This course provides dealers with all of the information they need regarding Power Commander sales and support.



## CERTIFIED POWER VISION TUNING CENTERS

This 3-day training course held at Dynojet Research in Las Vegas, Nevada includes EFI theory and operation for expert EFI calibrating, Power Vision WinPV software, AutoTune Basic & Pro and custom EFI map development using the Power Vision on the dynamometer. Certified Power Vision Tuning Centers are listed online and are the only Dynojet approved tuning centers for customers seeking custom Power Vision tunes created on a Dynojet dynamometer.



## CERTIFIED POWER VISION DEALERS

This 1/2 day training course provides all the information needed regarding Power Vision sales and support. Certified Power Vision Dealers are listed online as Approved Locations that can thoroughly support Power Vision sales.

## DYNAMOMETER TRAINING

On-Site Dynamometer Training Available. Dynojet provides two day on-site training for an additional fee. For more info on training and certification contact us at: 1-800-992-3525/training@dynojet.com

**2017 DYNOJET DYNAMOMETER CATALOG**



# ***THE CARLSON COMPANY***

**Your Source For Professional Service Equipment**

PO Box 80897 • Rancho Santa Margarita, CA 92688

Phone: 949-768-3333 • Fax: 949-768-3336

Email: [sales@thecarlsoncompany.com](mailto:sales@thecarlsoncompany.com)

**[www.TheCarlsonCompany.com](http://www.TheCarlsonCompany.com)**

**1-800-222-6199**

***Big Enough to Serve You, Small Enough to Know You!***