

DYNO TEST ROOMS

INC DYNO TEST ROOMS

INC DYNO TEST ROOM

The INC Dyno Test Room offers a pre-engineered modular system for building a professional high performance dynamometer test room within your facility. The INC rooms are designed with features specifically intended to work with Dynojet Motorcycle and ATV dynamometers. Designed and constructed of 4" thick modular acoustical metal panels and components, the INC Dyno Room allows you to safely operate your dynamometer while providing excellent exhaust ventilation and high performance sound reduction of 40 dBA or more.

PRE-ENGINEERED

Motorcycle Dynamometer Testing is a very specialized activity and the INC Dyno Test Rooms are designed for this unique application. Ventilation systems are high-volume and consist of silenced exhaust and inlet assemblies. All necessary openings in the room walls and roof are provided. A variety of room sizes are available, typically ranging from 10' to 14' width and 15' to 18' length. Standard equipment includes one 4' door and one viewing window (42" x 42").

MODULAR SYSTEM

All rooms are equipped with high performance sound reduction capabilities of up to 40 dBA or more. Design and construction utilizes INC's 4" thick modular acoustical panels. The wall panels are 3' and 4' wide x 8' tall and are available with or without windows. The two-pane, 4" thick windows are double glazed, tempered safety glass and measure 42" wide x 42" tall. All panels are double wall construction, consisting of electro-galvanealed solid steel on the room exterior with perforated steel surfaces on the interior. The wall thickness is filled with INC's special sound absorbing insulation. This construction provides excellent acoustical characteristics.

ASSEMBLY

The sturdy wall panels assemble into base channels and are then attached to each other with one-piece joiners provided in pre-cut lengths to fit. The roof and wall panels are connected as shown in factory supplied drawings. Final steps are to attach the supplied ventilation system to your ducting and bring electrical power to the room. Ducting beyond the fans and/or inlet is a customer responsibility and is not included. An optional pre-wired lighting and electrical package is available, or this aspect can be handled by a local electrical contractor.



INC DYNO TEST ROOM (with Super Vent System)

FEATURES

- HIGH NOISE LEVEL ISOLATION: 4" thick acoustically absorptive panels
- SILENCED VENTILATION SYSTEMS: Provides exhaust containment and extraction
- MODULAR CONSTRUCTION: Allows easy and economical expansion or relocation
- HIGH PERFORMANCE SINGLE DOOR: 4' Acoustical door, heavy duty seals
- VIEWING WINDOW: 42" x 42" double glazed tempered safety glass (one included)
- CONSTRUCTION: Supplied as a kit. Professional room assembly available
- CUSTOM ROOMS: Custom room sizes and ventilation systems available

OPTIONAL EQUIPMENT

Super Vent System (Required for all Load-Control Dynamometers)
6' and 7' Wide Double Doors (12' and wider rooms only)
Pre-Wired Lighting & Electrical Package
Factory Prime & Finish Exterior Paint (Custom Colors avail.)
Additional Window(s) (Bay windows also available)

**LEASE
TO OWN!**

Call The Carlson Company for a complete Dyno Test Room Brochure



Call for more information

800-222-6199

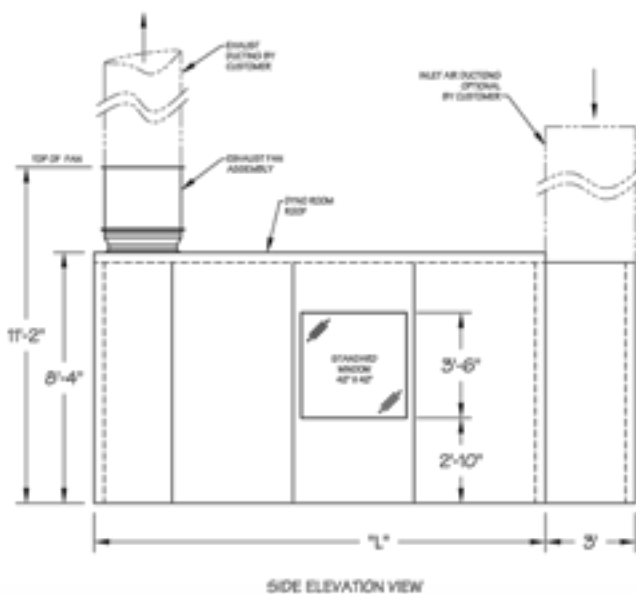
INC DYNO TEST ROOMS

INC DYNO TEST ROOMS

Dynamometer testing of engines, motorcycles, vehicles and components is an essential process in performance tuning, troubleshooting, R+D development, endurance testing and verification of horsepower and torque. The PowerSports industry relies on dynamometer testing to maximize performance, provide & validate after-market products and properly tune today's high performance engines.

ESSENTIAL FOR PROFESSIONAL DYNO TESTING

You've made a substantial investment in your dynamometer, personnel and training - to make the most of that investment and set you apart from your competition, you need to perform your dyno work in a dedicated, properly designed environment. We offer a complete line of affordable, functional Dyno Test Rooms just right for any dynamometer set up. Designed and constructed of our rugged industrial duty modular acoustical panel system called Panel-Wall™, our Dyno Test Rooms are easy to install, easy to move or change with your facility and built to last. Design and performance features have been developed and tested specifically to work seamlessly with a variety of dynamometers and equipment applications to ensure a minimum of 40 decibel (dBA) sound level reduction and reliable proper ventilation.



THE USE OF AN INC PROFESSIONAL DYNO ROOM WILL

- Maximize your dynamometer investment
- Provide a controlled testing environment
- Ensure test and tuning repeatability
- Provide a safe workspace for your technicians
- Showcase your dynamometer facility
- Be a quiet neighbor
- Attract and impress customers

TECHNICIANS & ENGINES CAN BREATHE EASY

Of course a Dyno Test Room is only as effective as it's ventilation system, and our optional SuperVent™ system guarantees to remove all heat, carbon monoxide and other combustion and exhaust gases while providing fresh air for engine consumption and operator comfort without sacrificing any noise reduction!

Even when making long dyno runs with an eddy-current or other load applying device, such as when fuel injection mapping, our SuperVent™ system with our unique flow-thru design and exhaust source capture reduces harmful carbon monoxide levels to as low as 4 ppm.

CALL THE CARLSON COMPANY TODAY TO DISCUSS YOUR DYNO ROOM REQUIREMENTS!

KEY FEATURES AND BENEFITS

- Guaranteed predictable noise reduction – 40 dBA or more!
- Known fixed cost – stays on budget
- Modular panel construction – easy to erect and change
- Easy two-person assembly
- Sound absorbing interior surfaces
- Rugged corrosion resistant galvanized steel construction
- All Components meet ASTM E-84 Class I Fire Rating
- High performance acoustical doors and viewing windows
- Safe effective exhaust gas extraction and cooling air flow

