



THE CARLSON COMPANY

Your Source For Professional Service Equipment



**POWERSPORTS
SERVICE
EQUIPMENT
CATALOG**



800-222-6199 • TheCarlsonCompany.com

THE CARLSON COMPANY ADVANTAGE

ABOUT US

Since 1972, The Carlson Company remains a leading supplier of service equipment to the Motorcycle and Powersports Industry. We specialize in providing your service departments with the right equipment for profitable service. With over 50 years of industry dedication, we have built a reputation with our customers as a supplier of the best service equipment available to the Powersports Industry.

INDUSTRY EXPERIENCE

As a leading Powersports service equipment supplier, we take pride in offering products that fit our industry's specialized needs. Today's service departments are evolving rapidly as profit centers for new and existing dealers and The Carlson Company is leading the way with innovative products that are brought to market specifically to address the needs of today's dealers. The product selection offered is the direct result of our industry experience, motorcycle expertise, and commitment to quality products.

QUALITY EQUIPMENT

Quality assurance is our top priority. We do the shopping for you. Our product line is researched and tested before we offer it to our customers. Quality Equipment right from the start guarantees you years of dependable service life. We continue to improve and expand our equipment line to help you do a better job in less time. Our mission statement remains intact and reflects our steadfast commitment to innovate and supply the best service equipment available to our industry.

EXCEPTIONAL SERVICE AND SUPPORT

Superior Customer Service You Can Count On! We are committed to our customers Before - During - and After the sale. Our Powersports Industry expertise guarantees you'll get the right answers and the right equipment for your shop.

Ask us about LEASING your Equipment.
(Lease-to-Own with a \$1.00 buy-out)



THE CARLSON COMPANY

Your Source For Professional Service Equipment

PO Box 80897 • Rancho Santa Margarita, CA 92688

Phone: 949-768-3333 • Fax: 949-768-3336

Email: sales@thecarlsoncompany.com

www.TheCarlsonCompany.com

800-222-6199

Big Enough to Serve You, Small Enough to Know You!

FIFTEENTH EDITION

© 2022-2024



ORDER ONLINE: TheCarlsonCompany.com

OR CALL: **800-222-6199**

TABLE OF CONTENTS

TIRE & WHEEL SERVICING

- Bead Seater, Cheetah, COATS..... 2
- Motorized Tire Changers, COATS 2-3
- Computer Wheel Balancers, CEMB 3

LIFTS & STANDS

- Portable Lifts, Handy 4-8
- Center Lift Jacks, KLS, Handy..... 5
- Hydraulic Lift, Handy 6
- UTV Lifts, Handy, Turf-Rail..... 6-7
- Lawnmower Lifts, Handy..... 8
- In-Ground Lifts, Bestway..... 9

DYNAMOMETERS

- Motorcycle, ATV & Trike Dynamometers, Dynojet.. 10-13
- Dynamometer Options, Dynojet 13

DYNO TEST ROOMS

- Dyno Test Rooms, INC 14-15

FUEL & OIL TRANSFER

- Gas Caddy, JDI 16
- Portable Waste Oil Evacuators, JDI..... 16
- Oil Dispensing System, JDI..... 17

BATTERY CHARGING & TESTING

- Battery Chargers, Deltran, OptiMATE..... 18-19
- Battery Jump Starters, Solar 20
- Carb & Fuel Injection Synchronizers, Tecmate 20

VEHICLE SERVICING & REBUILDING

- Diagnostic Tools & Accessories, Tecmate..... 20
- Exhaust Gas Analyzers, Infrared Industries..... 21
- Diagnostic Scan Tool, Motorscan 22-23
- Boring Bar, Winona Van Norman 24
- Cylinder Honing Machine, Winona Van Norman 25
- Cylinder Honing Tank, Winona Van Norman 25
- Measuring Instruments, Mitutoyo..... 26
- Valve Seat Cutting Kits, Motorized Units, Neway 27
- Flex-Hone Tools, Honing Oil, BRM 28
- Flowbenches, Superflow..... 29
- Bead Blast Cabinets, Trinco..... 30
- Hydraulic Presses, Nugier 31
- Anti-Fatigue Mats, Handy 28, 31

AIR COMPRESSORS

- Air Compressors, Champion 32

PARTS CLEANING & WASHERS

- Ultrasonic Cleaners, Omegasonics 33
- Parts Washers, Build-All 34-35

PERSONAL WATERCRAFT SERVICING

- PWC Test Tanks, Specialty Motors 36
- PWC Hoist Workstations, Specialty Motors..... 36

WORKBENCHES

- Ultra Custom & Realiti Workcenters, Shure..... 37
- Custom Series Workbenches, Shure..... 38
- Shureshop Workbenches & Carts, Shure 39
- Tear-Down Benches, Shure 40
- Tear-Down Tables, Handy 40

- INDEX 41



TIRE & WHEEL SERVICING

COATS MOTORIZED TIRE CHANGERS

The "Industry Standard" Motorized Tire Changer!

Nationally known for quality, this heavy-duty tire changer is the machine of choice!

The COATS 60X/MC is here to stay! Capable of changing ALL Motorcycle and ATV/UTV tire sizes. The 60X/MC offers a "RoBo Arm" that mechanically assists the mounting and de-mounting of stiff sidewall and/or low profile tires. Free Freight and On-Site Service Center set-up and demonstration is included at no charge.

For over 60 years, COATS has been building top quality tire changers to fit a variety of special applications. Unlike some imported brands, the 60X/MC is built in the U.S.A., and is supported by the largest nationwide network of authorized service centers.

FEATURES (60X/MC, RC-55/MC, RC-45/MC)

- "RoBo Arm" system & manual bead roller kit for stiff sidewall / low profile tires
- Multi-purpose three position motorcycle clamps with premium nylon wheel protectors
- Extended vertical channel allows sprockets, pulleys and brake discs to remain on wheels during servicing
- Specially designed Motorcycle/ATV Mount Demount Head with Nylon Insert protection
- Three position Automotive Clamps and Automotive Style Mount Demount Head also included

SPECIFICATIONS (60X/MC, RC-55/MC, RC-45/MC)

- **RIM DIAMETERS:** 6" to 24", up to 28" w/optional Grip Max Clamps
- **RIM WIDTH:** 12" (max.), up to 14" OK w/optional Grip Max Clamps (60X/MC); 8.5" (max.), up to 10.5" OK w/optional Grip Max Clamps (RC-55/MC, RC-45/MC)
- **POWER REQUIREMENTS:** 120V, 15 amp, single phase
- **AIR REQUIREMENTS:** 110 PSI (recommended), 5 CFM

OPTIONAL ACCESSORIES



1837101
Tire Mounting Paste



8506545
Aux Bead Sealer



184052
Manual Bead Roller



4356851 Drop Center Tool
for stiff sidewall tires



CH-5-AL CHEETAH
BEAD SEATER

CHEETAH BEAD SEATER

Catalog No. CH-5-AL

The CH-5-AL Cheetah Bead Seater makes seating the most difficult beads safe, simple and fast! The ASME certified aluminum tank has a 5-gallon capacity designed for use on ATV and motorcycle tires as well as automotive, trailer and truck tires. The CH-5-AL is equipped with a safety release valve to prevent over inflation and a large air gauge that accurately monitors tank air volume. High volume air output seats beads easily.

Change Stiff
Sidewall Tires
with Ease!

MOTORIZED TIRE CHANGER 60X/MC

Catalog No. 60X/MC



183374
Nylon Booties
(2 included)

183248
Grippers
for clamps
(included)

81845744
3-Position
M/C Clamps
(included)

183606
Bead Loosener
Protectors
(included)

85000783
Tire Iron
Protectors
(optional)

STANDARD EQUIPMENT:

- | | |
|----------|--|
| 81845744 | Three Position Motorcycle/ATV Clamps (6" to 24" range) |
| 183373 | Nylon Booties for Mount-Demount Head (2 pack) |
| 183606 | Bead Loosener Shoe Socks (2 pack) |
| 183248 | Plastic Grippers for clamps |
| 85009943 | Robo-Arm system for stiff sidewall/low profile tires (60X/MC, RC-55/MC only) |
| 183422 | Automatic Oiler/Built-in Air Regulation |
| 183355 | Motorcycle/ATV Mount-Demount Head |
| 181354 | Tire Iron/Bead Lifting Tool |

OPTIONAL EQUIPMENT:

- | | |
|------------|---|
| 1837101 | Tire Mounting Paste - Bucket |
| 85009048 | Tire Iron/Bead Lifting Tool Protectors (10 pack) |
| 85000783 | Lube Bracket Holder and brush for COATS Tire Paste |
| 4356851 | Drop Center Tool: For stiff sidewall tires |
| 85606545 | Auxiliary Bead Sealer |
| 85607986 | Grip-Max Plus Auto Clamps(Allows up to 28" dia) |
| 184052 | Manual Bead Roller Kit |
| 8560761701 | RoboArm Upgrade Kit for RC-45/MC
(Does not include Manual Bead Roller #184052) |



ORDER ONLINE: TheCarlsonCompany.com

OR CALL: 800-222-6199

**FREE
FREIGHT**
(Continental U.S.A.)

COATS MOTORIZED TIRE CHANGERS

These COATS tire changers include specially designed three position Motorcycle/ATV clamps which allow the user to change an ATV tire as small as 6" in diameter to a motorcycle wheel up to 24" with the same set of clamps. They offer complete protection for expensive, delicate wheels at every step of the tire changing process. Bead loosener shoe socks, clamp booties, nylon inserts and lift tool protection help prevent metal-to-metal contact that can cause scratching or marring. The Manual Swing Arm is easily adjusted so that the Duckhead® Mount/Demount Tool is properly fitted to the tire rim assembly. Conveniently placed foot pedals provide precise control over every step of the changing process, this allows the technician to be more efficient while mounting and demounting tires. Made in the U.S.A.

Free Freight and On-Site Service Center set-up and demonstration is included at no charge.

SAVES TIME & MONEY!

Easy-to-use controls.
State of the art technology. On-Site
set-up and demonstration
included.

MOTORIZED TIRE CHANGER RC-55/MC

Catalog No. RC-55/MC (Includes RoBo-Arm)

**LEASE
TO OWN!**

MOTORIZED TIRE CHANGER RC-45/MC

Catalog No.
RC-45/MC
(RoBo-Arm not incl.)

The COATS RC-45/MC offers all the features and benefits of the RC-55/MC except the RoBo-Arm assist system. Some dealerships simply do not need to change stiff sidewall/low profile tires. If needed, the RoBo-Arm assist system can be added to this machine at a later date.

CEMB COMPUTER WHEEL BALANCER (With Stationary Shaft)

The K22 has proven itself as the finest balancer for motorcycle wheels in the world. The K22 Computer Balancer is specifically designed to balance motorcycle wheels. It features a unique "stationary shaft" that allows for precise, repeatable balancing results. Unlike converted automotive balancers, the K22's "stationary shaft" for motorcycles makes set-up and operation a breeze. This feature allows the technician to also diagnose noisy wheel bearings and tire out-of-roundness easily. The K22 is capable of balancing wheels in either the Static Mode or Dynamic Mode. The Dynamic Mode balances both planes of the wheel, thus giving a more accurate balance for wheels wider than 5". Manufactured by CEMB, the largest manufacturer of balancers in the world. Their patented balancer technology combined with ongoing product improvements makes this the machine of choice.

SPECIFICATIONS

- RIM DIAMETER: 10" to 24"
- MAX DISTANCE BETWEEN WHEEL BEARINGS: 9-1/2" or wider*
- POWER REQUIREMENTS: 120V, 1 phase
- ULTIMATE ACCURACY: ± 1 gram, 1/10oz.

For Single-Sided Swingarm Wheels, order optional adaptor #41FF48280

*For 280, 300 & 330 sizes, order optional Shaft Extension Cone #04C220001

FEATURES

- BALANCING BOTH PLANES: Static (regular) and Dynamic (wider than 5")
- ULTRA-FAST SETUP: Stationary shaft. (No adapter drive forks/arms to adjust)
- DIAGNOSE WHEEL BEARINGS: Stationary shaft allows tech to hear noisy bearings
- DETECT OUT-OF-ROUNDNESS: Abnormal vibrations are felt through control lever
- FREEDOM FROM ERRORS: Digital electronics guarantee accuracy and reliability



MOTORIZED COMPUTER BALANCER

Catalog No. K22



ORDER ONLINE: **TheCarlsonCompany.com**

OR CALL: **800-222-6199**

HANDY PORTABLE LIFTS

Handy Air Lifts have been around since 1963 and are perhaps the most popular Motorcycle/ATV Air Lifts in the world.

The Standard 1200 Air Lift is ready to simplify your service department. The Standard 1200 Air Lift has been revolutionized with a maintenance-free air bellows, so your focus remains in the shop. We boosted the capacity on our best-selling lift by 200 lbs., so this lift is ready to tackle Motorcycles, ATVs, and Riding Lawnmowers. The Standard 1200 features an automatic ratcheting safety mechanism with dual springs that create a positive lock as the lift is raised. The safety mechanism is easily flipped back to lower the lift, and automatically resets once the lift reaches the bottom. With the automatic reset, there is no more worrying about the operator having to remember to set the safety bar. That's not all! We raised the maximum height by nine inches so this lift is perfect for even the tallest mechanics. Built with heavy-duty domestic steel and finished with a durable powder coat finish, the Standard 1200 features a texture-black frame with gloss black accessories. When you are looking for a lift that can do it all, look no further than the Standard 1200 Air Lift. Made in the U.S.A.



STANDARD 1200 AIR LIFT

Catalog No. 40100G
(Shown with optional vise)

4

OPTIONS

- 14476 CV-17 Wheel Vise: Opening 7-1/2" Includes Cover Kit
- 10728 12" Side Extensions: Makes lift table 48" wide (For Standard 1000 and Standard 1200 Lifts)
- 16002 12" Side Extensions: Makes lift table 48" wide (For S.A.M. 1000 and S.A.M. 1200 Lifts)
- 16011 13" Front Extension: Extends overall length by 13"
- 10738 13" Rear Extension: Extends overall length by 13"
- 10732 Lift Dolly: For easy lift mobility in fully down position
- 16010 Tool Tray: Quick-release, fits all lifts - 39-3/4" x 7" x 1-3/4"
- 21660 Deck Hand: Raises the front end of Riding Mowers

SPECIFICATIONS

- Capacity: 1200 lbs.
- Air Source: 10 Gal. Tank min.,
120 psi continuous
- Table Size: 24" X 80"
(Standard 1200)
- Table Size: 24" X 84"
(S.A.M. 1200)
- Maximum Height: 39"
- Minimum Height: 8"
- Ramp Length: 30"



S.A.M. 1200 AIR LIFT W/REAR DROP OUT PANEL

Catalog No. 40200G
(Shown with optional Vise)

The S.A.M. 1200 has all the features and benefits of the Standard 1200, however the S.A.M. 1200 offers an additional Rear Drop Out Panel for making tire changes easier and also a slightly extended table top length of 84". Several popular options are available that add even more efficiency to these very popular lifts.

When you're looking to do even more, look to the S.A.M. 1200 Air Lift. Made in the U.S.A.



CUSTOM COLORS AVAILABLE (additional charge)

- ORANGE top/Black frame
- RED top/Black frame
- BLUE top/Black frame
- BLACK top/Black frame
- GRAY top/Black frame (not a custom color)



ORDER ONLINE: TheCarlsonCompany.com

OR CALL: 800-222-6199

HANDY PORTABLE LIFTS

The B.O.B. 1500 Air Lift is packed with features and benefits. This lift was designed from the ground up with the Motorcycle/Trike/ATV technician in mind. It features a dropout rear panel that makes rear wheel removal a breeze. The lift has a 40" maximum rise with seven intermediate locking positions and a lifting capacity of 1,500 pounds. For easy on/off loading, the lift lowers to 10". To better fit your needs, the B.O.B. 1500 Lift can be outfitted with several different options.



B.O.B. 1500 PORTABLE AIR LIFT

Catalog No. 14472



OPTIONS (B.O.B. 1500 Lift)

- 14476 CV-17 Wheel Vise multi-position.
- 14473 12" Side Extensions: Two 12" x 84" panels - makes lift table 52" wide
- 14474 13" Front Extension: Extends length to 97" - for longer motorcycles
- 21300 Trike/Spyder Extension Kit: Allows for Trikes & Spyders 62" x 24"
- 16010 Tool Tray: Quick release, fits all lifts - 39-3/4" x 7" x 1-3/4"



1500 LB. CAPACITY!

CUSTOM COLORS AVAILABLE (additional charge)

- ORANGE top/Black frame
- RED top/Black frame
- BLUE top/Black frame
- BLACK top/Black frame
- GRAY top/Black frame (not a custom color)

SPECIFICATIONS

- Type: Air (100 psi)
- Capacity: 1500 lbs.
- Table Size: 28" x 84"
- Length: (Overall) 124" w/ramp
- Maximum Rise: 40"
- Minimum Height: 10"

HANDY LIFT ACCESSORIES



CV-17 Cycle Vise 14476



12" Side Extensions
(kit includes ramps, poles, stabilizer bar & hardware)



**13" Front Extension
13" Rear Extension**



Tool Tray 16010
Keeps tools organized and handy. 39-3/4" L x 7" W x 1-3/4" D. (for use with all lifts)



Lift Dolly 10732
(Fits Standard 1000, Standard 1200, S.A.M. 1000 & S.A.M. 1200 Lifts Only)



Universal Scissor Jack 13008
Use on lift or on floor
6" W x 19" L, 750 lb. cap.
Min Ht. 3-1/2", Max Ht. 15"



MC450 Center Lift Jack
Use on lift or on floor
5-1/2" W x 16" L, 1100 lb. cap.
Min Ht. 3-1/2", Max Ht. 13"



Lo-Boy Scissor Jack 16999
Use on lift or on floor
10" W x 16" L, 750 lb. cap.
Min Ht. 3-1/2", Max Ht. 13"



Deck Hand Riding Mower Lifter
(Fits Standard 1000 & 1200, S.A.M. 1000 & 1200, B.O.B. 1500 & Gruntavore 1800 Lifts Only)



Anti Fatigue Mats
We offer three varieties of Mats to choose from



ORDER ONLINE: **TheCarlsonCompany.com**

OR CALL: **800-222-6199**

HANDY LIFTS & TURF RAIL U.T.V. LIFT ATTACHMENT

6



**R.A.M. 2500
ELECTRIC
HYDRAULIC LIFT**
Catalog No. 50000



Catalog No. 50000
(Custom Color Orange Top shown
with optional Trike Kit 50900)



Catalog No. 50800 12"
Side Extension Kit
(Four "easy on - easy
off" individual side
panels, makes lift
53" wide)

OPTIONS

- 14476 CV-17 Wheel Vise multi-position
- 50800 12" Side Extension Kit: Four 12" x 43.32" panels, plus ramps (40" long) - makes lift table 53" wide
- 50900 Trike Extension Kit: Extends back of table width from 29" to 63", Panel Dimensions 17" x 23.5"
- 16010 Tool Tray: Quick release, fits all lifts - 39-3/4" x 7" x 1-3/4"

SPECIFICATIONS

- Capacity:** 2500 lbs.
- Table Size:** 29" x 86-5/8"
- Maximum Rise:** 40"
- Minimum Height:** 9.5"
- Type:** Electric (110v 1ph)
w/ Wireless Remote Operation

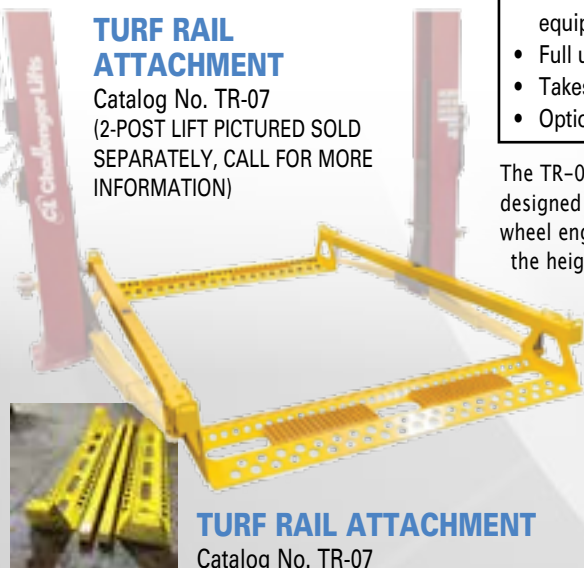
CUSTOM COLORS AVAILABLE (additional charge)

- ORANGE top/Black frame
- RED top/Black frame
- BLUE top/Black frame
- BLACK top/Black frame
- BLACK CHROME top/Black frame
- GRAY top/Black frame
(not a custom color)

"Turf Rail" attachment for 2-Post Lifts - UTV's, ATV's, Riding Lawn Mowers and more!

TURF RAIL ATTACHMENT

Catalog No. TR-07
(2-POST LIFT PICTURED SOLD
SEPARATELY, CALL FOR MORE
INFORMATION)



TURF RAIL ATTACHMENT
Catalog No. TR-07

FEATURES

- Fits most surface mounted two post lifts.
- Easy installation in as little as two minutes.
- Offers maximum flexibility to service cars, light trucks, turf equipment or golf carts all on the "Turf Rail".
- Full under - vehicle access and safety.
- Takes less valuable shop space than 4-post lifts.
- Optional Filler Pads available for small diameter wheels.

The TR-07 Turf Rail is an attachment for two-post automotive lifts, designed to pick up All Terrain Vehicles, UTV's, and Turf Equipment by wheel engagement. The patented system has two rails that engage onto the height adapters of most two-post symmetric designed lifts and then two adjustable trays attach to the rails and are fully adjustable from wheelbases ranging from 24" to 124". The Turf Rail is a perfect fit for UTV Dealers, golf courses, parks departments, turf care and landscape companies and all types of grounds care facilities.



**TURF RAIL
attachment
with Gator pictured**
(2-POST LIFT PICTURED
SOLD SEPARATELY, CALL
FOR MORE INFORMATION)

SPECIFICATIONS

Lift capacity up to 7000 lbs. (Each tray has a 3,500 lb capacity)
Patent pending rail system allows adjustable wheel bases from 24" to 124".
Works with Challenger CL10V3 Series, LE10, CLFP9, CL12, E12, SA10 and many other brands and models of 2 Post Lifts, CALL FOR MORE INFORMATION
2 - POST LIFT PICTURED SOLD SEPARATELY, CALL FOR MORE INFORMATION ON 2-POST LIFTS



ORDER ONLINE: **TheCarlsonCompany.com**

OR CALL: **800-222-6199**

THE B.U.L. - BIG UTILITY U.T.V. LIFT

Catalog No. 22750

This B.U.L. means business! Meet the beef of the Handy lineup: the Big Utility Lift. The B.U.L. can handle a whopping 2,500-lb. capacity and offers you the option of loading from either end, making it the ideal choice for servicing your most colossal UTV's. Don't worry about maintaining an air cylinder with this bad boy; the B.U.L. operates with an air bellows which requires zero maintenance! The B.U.L. raises to a maximum working height of 39" and has four stopping points, so you pick the height that's best for your job. We're giving you dual detent bars on this monster to ensure superior stability.

Four adjustable support bars with anti-skid rubber padding give you piece of mind as you lift wide loads. A sliding oil pan is mounted under the lift top, which boasts a 27" wide working surface. The framework is textured black powder coating for added durability, so your lift looks good conquering every job. To preserve your finished shop floor, we chose four phenolic wheels with serviceable roller bearings. Storage is a breeze with this compact unit, with a minimum height of 9.5" and weight of 500 lbs. So when you need a lift that's small in footprint but big in capacity, look no further than the B.U.L. from Handy. As with all Handy products, the B.U.L. is proudly made in the USA.

**Features 4 Height Positions
Color: Gray top w/Black frame**



SPECIFICATIONS

2500 lb. capacity
Top Dimensions: 27" W X 54" L
51" wide w/support arms extended
Max. Height: 39" on safety bar
Min. Height: 9.5"
Air Source: 120 psi continuous,
10 Gallon Tank minimum

GRUNTAVORE 1800 AIR LIFT (DESIGNED FOR UTV'S, ATV'S & GARDEN TRACTORS)

Catalog No. 16867

The massive 1800 lb. lifting capacity of the Gruntavore solves your maintenance challenges. The Gruntavore 1800 is a full 104" in length and 60" in width, making it ideal for all models of UTVs, ATVs, garden tractors, and lawn care equipment. It is constructed of heavy duty 11 gauge steel, weighs 950 lbs., and has a lifting capacity of 1800 lbs. The Gruntavore 1800 is topped off with a powder-coat finish for extra durability.

SPECIFICATIONS

Type: Air (100 psi)
Capacity: 1800 lbs.
Table Size: 60" X 104"
Maximum Rise: 40"
Minimum Height: 10"
Ramp Length: 31"



(Shown w/optional
Deck Hand Mower
Lifter 21660G)



ORDER ONLINE: **TheCarlsonCompany.com**

OR CALL: **800-222-6199**

HANDY PORTABLE LIFTS

The Deck Hand by Handy was designed to bolt on to your Handy lift and is used to lift the front end of your residential and commercial mowers. Working on Zero Turn mowers? With the Handy Deck Hand you have easy access to the mower deck and other hard to access areas. With a 500 lb. front end lifting capacity, it will accommodate most commercial mowers. The Handy Deck Hand (Riding Mower Lifter) – is designed to be used with Standard 1000, Standard 1200, S.A.M.

1000, S.A.M. 1200, B.O.B. 1500 & Gruntavore Air Lifts Only (For Gruntavore Deck Hand order 21660G)



(Shown w/Standard Air Lift – not incl.)

DECK HAND – RIDING MOWER LIFTER

Catalog No. 21660 & 21660G
(Shown w/Standard Air Lift – not incl.)

SPECIFICATIONS

- 500 lbs. front end lifting capacity
- Easily adjustable front wheel pads, 48" max width, 9" min width
- 30" max lifting height with 17 intermediate locking positions
- Wheel pads accommodate up to a 9" wide tire
- Automatic ratcheting safety lock
- Heavy duty 3/16" cable
- Easily removed from lift top, by pulling 2 pins
- 50" height above lift top
- Winch with automatic friction brake (winch can't free wheel)
- Black powder coat finish

MULTI-LIFT

The Multi-Lift is all you need to get the job done right. The durable domestic steel tabletop design is the perfect fit for multiple repair projects, including push lawnmowers, appliances, small motors, and garden equipment. The Multi-Lift features a 12" center opening for easy access to what's below the table top and five positive rotational locking working positions with 360° rotation. For easy loading and unloading, the Multi-Lift lowers to 5" off the ground and comes with a built-on ramp extension. An adjustable wheel channel helps reduce slippage.

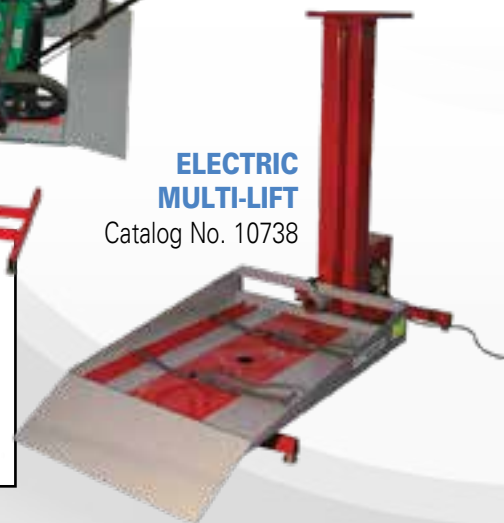
MANUAL MULTI-LIFT

Catalog No. 14691



ELECTRIC MULTI-LIFT

Catalog No. 10738

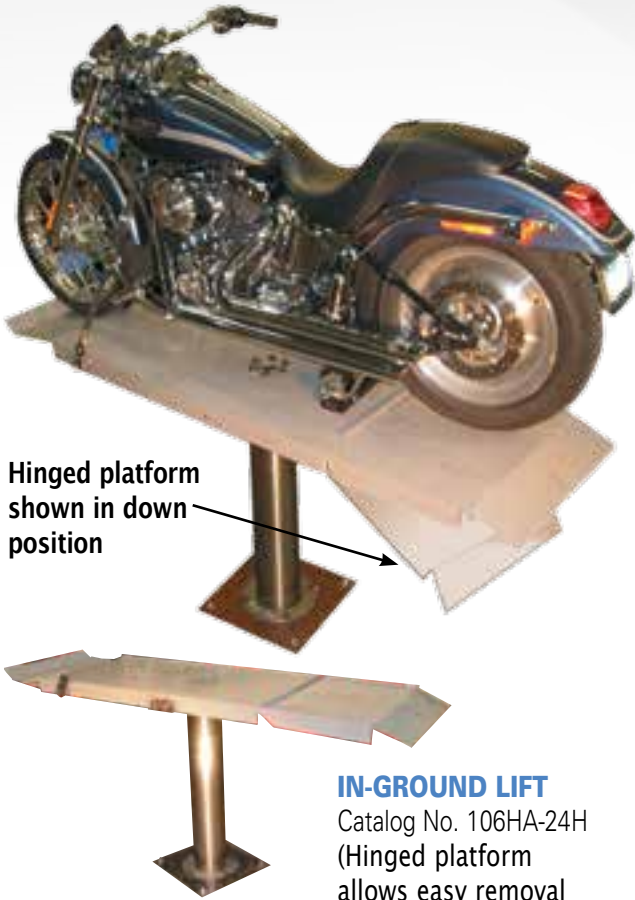


SPECIFICATIONS

- 1/3 HP electric motor (Electric Version)
- Five positive rotational locking working positions
- 30" x 36" steel table
- Max Height 37-1/2" (Electric) / 39" Manual
- Capacity 300 lbs.



BESTWAY IN-GROUND HYDRAULIC LIFTS



Hinged platform shown in down position

IN-GROUND LIFT

Catalog No. 106HA-24H
(Hinged platform allows easy removal of rear wheel)

Air/Hydraulic lifts without platform (Frame Contact)

For Harley-Davidson and other motorcycles that allow frame contact, a special version is available in either 5" or 6-1/2" piston diameters (Catalog No's. 5SPCH & 6SPCH) with a pre-drilled top designed to secure the motorcycle frame directly to the top of the lift with "J" bolts. Additional hole in plate provides access to bottom of engine.

Bestway lifts are also available "topless" so you can add a top plate of your own design (Catalog No's. 5SP & 6SP). You can also add a platform of your own to the 5SPC & 6SPC lifts by welding or bolting the platform to the 1/4" thick steel plate provided.

These heavy-duty, smooth operating air/hydraulic (air over oil) motorcycle lifts can be rotated 360° and incorporate a choice of 5" or 6-1/2" diameter pistons. Lifting capacity is 1500 lbs. for 5" and 2000 lbs. for 6-1/2" pistons, at 125 psi air pressure.

All units are easily installed in a minimum amount of space and require a 56" deep hole. Minimum height is 3"; maximum rise above floor is 36", (48" optional rise available). All units come complete with a three-way air valve - simply attach your air-line to operate.

Air/Hydraulic lifts with platform

The platform on each of the three lifts in the table below is large enough to contact both bike tires, and each platform is hinged toward the rear. The first two lifts have a slideable front plate which can extend the platform to a maximum of 76". The 106HA-30XL does not have a slideable front plate and has a fixed platform length of 92".

Catalog No.	Piston Diameter	Platform Length	Platform Width	Capacity
106HA-24H	6-1/2"	76"	24"	2000 lbs.
106HA-30H	6-1/2"	76"	30"	2000 lbs.
106HA-30XL	6-1/2"	92"	30"	2000 lbs.
106HA-48H	6-1/2"	76"	48"	2000 lbs.



Catalog No. CH-PH
Additional Top Plate Choice for Harley-Davidson
18" x 18" plus 6" ramps*

Catalog No.	Piston Diameter	Top Plate Dimensions	Application	Capacity
5SP	5"	N/A	Add your platform	1500 lbs.
5SPC	5"	18" x 18"	Harley-Davidson service	1500 lbs.
5SPCH	5"	18" x 18"*	Harley-Davidson service	1500 lbs.
6SP	6-1/2"	N/A	Add your platform	2000 lbs.
6SPC	6-1/2"	18" x 18"	Harley-Davidson service	2000 lbs.
6SPCH	6-1/2"	18" x 18"*	Harley-Davidson service	2000 lbs.

FRAME CONTACT IN-GROUND LIFT

Catalog No. 6SPCH

*Each lift is supplied standard with air valve mounted on side as shown. Other options include a remote control air valve that allows you to locate the valve anywhere in your shop and an optional non-rotating feature that eliminates the lift from spinning. Phone The Carlson Company for details if a "remote control" or "non-rotating" feature is desired.



ORDER ONLINE: **TheCarlsonCompany.com**

OR CALL: **800-222-6199**

DYNOJET LOAD CONTROL DYNAMOMETER

LOAD CONTROL DYNAMOMETER THE "INDUSTRY STANDARD"



Dynojet introduced a new standard – the 250i Load Control Dynamometer – which advances dynamometer tuning capability even further. Dynojet Dynamometers are affordable, accurate and take the guesswork out of tuning and troubleshooting today's motorcycles. All performance data is instantly acquired and transmitted to your computer via modular hardware. Horsepower and torque curves are viewed on a monitor and/or printed out. Any performance problem on the road or track is duplicated on the dynamometer, where it is detected, measured, recorded and diagnosed. This state-of-the-art equipment will increase your service credibility, customer satisfaction and profits.

MAP FUEL INJECTION

Fuel Injection Tuning is easier than ever with the Dynojet 250i. Offering the latest in eddy current power absorption technology, the Dynojet Load Control System is easy to operate and offers steady-state load control. Closed-loop load control software provides the technician with the ability to control RPM or MPH at any throttle opening. This causes the motorcycle to automatically hold at the technician's pre-determined setting. Repeatable, consistent results are very easy to obtain.

The 250i Load Control Dynamometer is perfect for duplicating specific customer complaint conditions, engine break-in, durability testing and fuel injection mapping. It's like getting two dyno's in one package, because all the features of the Dynojet Inertia Dynamometer are maintained. When used with the optional Air/Fuel Ratio Monitor, every dyno run can show you not only HP or Torque, but also exact air/fuel ratio across your RPM range.

LOAD CONTROL DYNAMOMETER FOR MOTORCYCLES

Catalog No. 250i

FEATURES

- Unlimited Maximum Horsepower Capability
- Eddy Current Load Absorption Unit (250 series only)
- Powder coated chassis, wheelbase capability up to 84 inches (from rear axle to front tire)
- NEW PowerCore Software suite with WinPEP 8 (PC, monitor, printer, etc. not included)
- NEW DynoWare RT dynamometer electronics and hardware
- Integrated control panel stand with console
- Ignition wire inductive tachometer pickup leads
- Front wheel lock
- Automatic Conditions Measurement (absolute pressure, etc.)
- 4 Analog Input Channels for 0-5v sensors (sensors and cables not included)
- 14 expansion ports for DynoWare RT accessories and DJ-CAN devices (such as Power Commander, Power Vision, Autotune, etc.)
- Starter system to spin roller (12V, battery not included)
- Installation and operation manuals
- One year replacement parts warranty
- Toll-free technical support

AVAILABLE OPTIONS PAGE 13



NOW SHIPPING WITH;

WinPEP8



ORDER ONLINE: **TheCarlsonCompany.com**

OR CALL: **800-222-6199**

DYNOJET LOAD CONTROL DYNAMOMETER FOR MOTORCYCLES, ATVs, TRIKES & MORE

The Model 250ix Chassis Dynamometer gives you the advanced technology, durability, and accuracy you need, all at an affordable price.

The same technology that has made the Dynojet Motorcycle Chassis Dynamometer the industry standard has led to the development of the MODEL 250ix dynamometer engineered for most other Powersports Vehicles (ATV's, Side-by-Sides, Go-Karts, and Trikes)

Dynojet's cutting-edge engineering delivers the precise horsepower measurements a technician needs to make quick and accurate evaluations of engine and drive-train performance. This allows you to maximize your shop's potential with increased sales, service efficiency, and shop credibility. The dyno's durable, low-maintenance construction ensures that you will be investing in many years of flawless tuning and troubleshooting. By eliminating the need for engine removal, the vehicle mounting time is as little as 5 minutes. A technician can then perform a simple test and examine the results right in the shop. Utilizing the Dynojet WinPEP 8 software, the dyno operator can evaluate the entire drive-train condition for the purpose of routine servicing or all-out performance development.

LOAD CONTROL POWERSPORTS DYNAMOMETER

Catalog No. 250ix

(Shown with optional Power Carriage/Clamp, and Dual Axis Fans)



UPGRADE TO THE ULTIMATE IN MOTORCYCLE & ATV DYNAMOMETERS!

Existing Model 200i or 250i owners can upgrade their equipment by adding an X - Module Roller - Catalog No. 77000003

FEATURES

- Accommodates Motorcycles and most other powersports platforms (ATV's, Side-by-Sides, Go-Karts, and Trikes)
- Unlimited Maximum Horsepower Capability
- Eddy Current Load Absorption Unit (250 series only)
- Powder coated chassis, wheelbase capability up to 84 inches (from rear axle to front tire)
- NEW PowerCore Software suite with WinPEP 8 (PC, monitor, printer, etc. not included)
- NEW DynoWare RT dynamometer electronics and hardware
- Integrated control panel stand with console
- Ignition wire inductive tachometer pickup leads
- Front wheel lock
- Automatic Conditions Measurement (absolute pressure, etc.)
- 4 Analog Input Channels for 0-5v sensors (sensors and cables not included)
- 14 expansion ports for DynoWare RT accessories and DJ-CAN devices (such as Power Commander, Power Vision, Autotune, etc.)
- Starter system to spin roller (12V, battery not included)
- Installation and operation manuals
- One year replacement parts warranty
- Toll-free technical support

LEASE TO OWN!

MODEL 250IX PIT VERSION



DYNO TEST ROOMS AVAILABLE

SEE PAGE 14. CALL THE CARLSON COMPANY FOR A COMPLETE DYNO ROOM BROCHURE



ORDER ONLINE: **TheCarlsonCompany.com**

OR CALL: **800-222-6199**

DYNOJET INERTIA DYNAMOMETER

When it comes to everyday motorcycle performance measurement, problem diagnosis and precision tuning, the Dynojet 200i Inertia Dynamometer offers fast, accurate and repeatable solutions. It has no controls to adjust, is quick and easy-to-use, and takes the guesswork out of performance evaluation. The technician saves time by simply running the bike on the dyno for a few seconds – from the lowest to the highest desired RPM or MPH.

The inertia dynamometer measures performance while the bike is accelerating a heavy rotating mass and displays complete HP and Torque curves from a single run. This simulation of real riding conditions permits actual dynamic fuel-flow testing, which enables you to study the engine's ability to accelerate the bike's load across the engine power band. Troubleshooting ignition vs. air-fuel problems, or rich vs. lean conditions, becomes more profitable.

Following its introduction in 1990, the Dynojet Inertia type dynamometer quickly became the standard for performance measurement and engine tuning in the motorcycle industry. Its ease of use and powerful software attracted customers from around the world. Dynojet ushered in a totally new era of performance evaluation and precision tuning, and as a result, now has thousands of dynamometer installations worldwide. The 200i Inertia Dynamometer provides the technician with instrumentation and facts instead of seat-of-the-pants guesswork.

THE SAME TECHNOLOGY THAT HAS MADE THE DYNOJET MOTORCYCLE CHASSIS DYNAMOMETER THE INDUSTRY STANDARD HAS LED TO THE DEVELOPMENT OF THIS DYNAMOMETER ENGINEERED FOR MOST OTHER POWERSPORTS Vehicles (ATV'S, SIDE-BY-SIDES, GO-KARTS, AND TRIKES).



MODEL 200I INERTIA DYNAMOMETER

Catalog No. 200i



FEATURES

- Unlimited Maximum Horsepower Capability
- Eddy Current Load Absorption Unit (250 series only)
- Powder coated chassis, wheelbase capability up to 84 inches (from rear axle to front tire)
- NEW PowerCore Software suite with WinPEP 8 (PC, monitor, printer, etc. not included)
- NEW DynoWare RT dynamometer electronics and hardware
- Integrated control panel stand with console
- Ignition wire inductive tachometer pickup leads
- Front wheel lock
- Automatic Conditions Measurement (absolute pressure, etc.)
- 4 Analog Input Channels for 0-5v sensors (sensors and cables not included)
- 14 expansion ports for DynoWare RT accessories and DJ-CAN devices (such as Power Commander, Power Vision, Autotune, etc.)
- Starter system to spin roller (12V, battery not included)
- Installation and operation manuals
- One year replacement parts warranty
- Toll-free technical support

SPECIFICATIONS

MAXIMUM HORSEPOWER	Unlimited
MAXIMUM SPEED	200mph/322kph
MAXIMUM LENGTH (FRONT OF FRONT WHEEL TO CENTER OF REAR WHEEL)	84in/213.3cm
DRUM DIAMETER	18in/45.72cm
DRUM WIDTH	16.38in/41.6cm
DRUM WEIGHT	500lbs/227kg
DRUM CONCENTRICITY	+/-0.001 in
TIMING ACCURACY	+/- 1 microsecond
DRUM SPEED ACCURACY	+/- 1/100TH mph
RPM ACCURACY	+/- 1/10TH rpm



ORDER
ONLINE:

TheCarlsonCompany.com

OR CALL: 800-222-6199

DYNOJET DYNAMOMETER OPTIONS



MONITOR TRAY

The Monitor Tray attached to the control pod and supports a monitor, keyboard and mouse. It is adjustable for optimum placement.

DUAL COOLING FAN SYSTEM

This integrated cooling fan system option has adjustable arms and can move 1800 CFM from each fan. These fans are controlled from the control pod.



THE POWER WHEEL CLAMP & POWER CARRIAGE OPTIONS

These options allow the dyno operator to adjust the carriage length and clamp the front wheel from the control pod, while seated on the bike.

EXTENDED WHEELBASE CARRIAGE OPTION

This option is necessary for testing long wheelbase motorcycles. Accommodates up to 102in, measured from rear axle to the leading edge of the front tire.



TORQUE CELL MODULE

Measures real-time torque, and allows sweep, step and custom load simulation tests.

May also be used to set ignition timing for maximum torque.

H-D FUEL TAP

H-D Fuel Tap is a dyno accessory available for DynoWare RT that provides fuel pressure as a data input for WinPEP 8 dyno users! It plugs directly into the stock fuel system with quick disconnects for fast and easy installation and fits 2001 and newer H-D models.



FOLDING RAMP

This option includes gas assist struts for one person operation.

The ramp features a dual-angle moderate slope design to aid in loading/unloading lowered and longer wheelbase motorcycles.

Supplemental ramp available for "X" models (requires primary ramp).

IX RAMP SHOWN



AFR-2 (DUAL AIR/FUEL SYSTEM)

The AFR-2 has two wide band O2 sensor inputs so you can sample two air/fuel ratios at the same time for measuring bank-to-bank. The AFR-2 uses the DJ-CAN system, which allows you to daisy-chain multiple AFR-2 modules to read up to 8 AFR's. The AFR-2 houses the Gen4 air pump system and comes standard with one O2 sensor.



EDDY CURRENT LOAD ABSORPTION UNIT

The Eddy Current Load Absorption Unit can be upgraded to any Dynojet inertia model, such as the 200/200i, and enables the ability to perform loaded tests such as closed-loop RPM step tests when tuning fuel-injection with a Power Commander or Power Vision.

H-D DATA LINK

Connect any Delphi equipped Harley-Davidson® (CAN & J1850) to DynoWare RT to read and sample live data direct from the bike! Whether you are making EFI calibrations, diagnosing a problem or simply getting a horsepower reading, the H-D Data Link gives you more data such as volumetric efficiency, spark advance, cylinder temp, and more.



DYNO TEST ROOMS AVAILABLE



ORDER ONLINE: **TheCarlsonCompany.com**

OR CALL: **800-222-6199**

DYNO TEST ROOMS

INC DYNO TEST ROOMS

INC DYNO TEST ROOM

The INC Dyno Test Room offers a pre-engineered modular system for building a professional high performance dynamometer test room within your facility. The INC rooms are designed with features specifically intended to work with Dynojet Motorcycle and ATV dynamometers. Designed and constructed of 4" thick modular acoustical metal panels and components, the INC Dyno Room allows you to safely operate your dynamometer while providing excellent exhaust ventilation and high performance sound reduction of 40 dBA or more.

PRE-ENGINEERED

Motorcycle Dynamometer Testing is a very specialized activity and the INC Dyno Test Rooms are designed for this unique application. Ventilation systems are high-volume and consist of silenced exhaust and inlet assemblies. All necessary openings in the room walls and roof are provided. A variety of room sizes are available, typically ranging from 10' to 14' width and 15' to 18' length. Standard equipment includes one 4' door and one viewing window (42" x 42").

MODULAR SYSTEM

All rooms are equipped with high performance sound reduction capabilities of up to 40 dBA or more. Design and construction utilizes INC's 4" thick modular acoustical panels. The wall panels are 3' and 4' wide x 8' tall and are available with or without windows. The two-pane, 4" thick windows are double glazed, tempered safety glass and measure 42" wide x 42" tall. All panels are double wall construction, consisting of electro-galvanized solid steel on the room exterior with perforated steel surfaces on the interior. The wall thickness is filled with INC's special sound absorbing insulation. This construction provides excellent acoustical characteristics.

ASSEMBLY

The sturdy wall panels assemble into base channels and are then attached to each other with one-piece joiners provided in pre-cut lengths to fit. The roof and wall panels are connected as shown in factory supplied drawings. Final steps are to attach the supplied ventilation system to your ducting and bring electrical power to the room. Ducting beyond the fans and/or inlet is a customer responsibility and is not included. An optional pre-wired lighting and electrical package is available, or this aspect can be handled by a local electrical contractor.



INC DYNO TEST ROOM (with Super Vent System)

FEATURES

- HIGH NOISE LEVEL ISOLATION: 4" thick acoustically absorptive panels
- SILENCED VENTILATION SYSTEMS: Provides exhaust containment and extraction
- MODULAR CONSTRUCTION: Allows easy and economical expansion or relocation
- HIGH PERFORMANCE SINGLE DOOR: 4' Acoustical door, heavy duty seals
- VIEWING WINDOW: 42" x 42" double glazed tempered safety glass (one included)
- CONSTRUCTION: Supplied as a kit. Professional room assembly available
- CUSTOM ROOMS: Custom room sizes and ventilation systems available

OPTIONAL EQUIPMENT

Super Vent System (Required for all Load-Control Dynamometers)
6' and 7' Wide Double Doors (12' and wider rooms only)
Pre-Wired Lighting & Electrical Package
Factory Prime & Finish Exterior Paint (Custom Colors available)
Additional Window(s) (Bay windows also available)

**LEASE TO OWN -
\$1⁰⁰ BUY OUT!**

Call The Carlson Company for a complete Dyno Test Room Brochure



INC DYNO TEST ROOMS

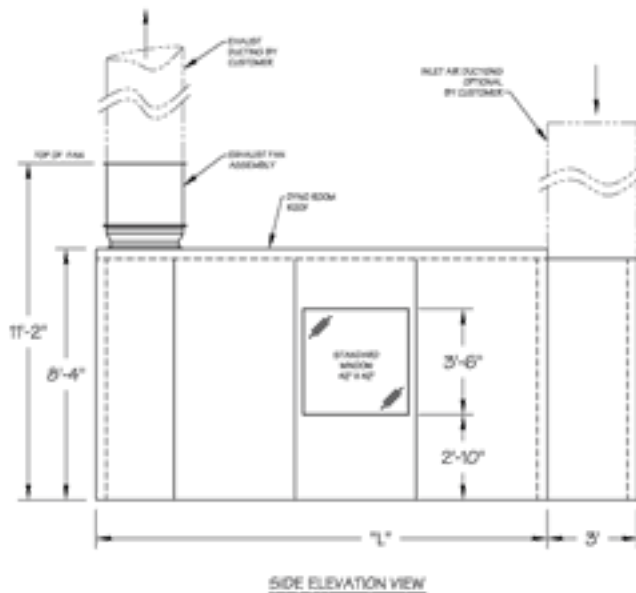
INC DYNO TEST ROOMS

Dynamometer testing of engines, motorcycles, vehicles and components is an essential process in performance tuning, troubleshooting, R+D development, endurance testing and verification of horsepower and torque. The PowerSports industry relies on dynamometer testing to maximize performance, provide & validate after-market products and properly tune today's high performance engines.

ESSENTIAL FOR PROFESSIONAL DYNO TESTING

You've made a substantial investment in your dynamometer, personnel and training - to make the most of that investment and set you apart from your competition, you need to perform your dyno work in a dedicated, properly designed environment. We offer a complete line of affordable, functional Dyno Test Rooms just right for any dynamometer set up. Designed and constructed of our rugged industrial duty modular acoustical panel system called Panl-Wall™, our Dyno Test Rooms are easy to install, easy to move or change with your facility and built to last. Design and performance features have been developed and tested specifically to work seamlessly

with a variety of dynamometers and equipment applications to ensure a minimum of 40 decibel (dBA) sound level reduction and reliable proper ventilation.



THE USE OF AN INC PROFESSIONAL DYNO ROOM WILL

- Maximize your dynamometer investment
- Provide a controlled testing environment
- Ensure test and tuning repeatability
- Provide a safe workspace for your technicians
- Showcase your dynamometer facility
- Be a quiet neighbor
- Attract and impress customers

TECHNICIANS & ENGINES CAN BREATHE EASY

Of course a Dyno Test Room is only as effective as it's ventilation system, and our optional SuperVent™ system guarantees to remove all heat, carbon monoxide and other combustion and exhaust gases while providing fresh air for engine consumption and operator comfort without sacrificing any noise reduction!

Even when making long dyno runs with an eddy-current or other load applying device, such as when fuel injection mapping, our SuperVent™ system with our unique flow-thru design and exhaust source capture reduces harmful carbon monoxide levels to as low as 4 ppm.

CALL THE CARLSON COMPANY TODAY TO DISCUSS YOUR DYNO ROOM REQUIREMENTS!

KEY FEATURES AND BENEFITS

- Guaranteed predictable noise reduction – 40 dBA or more!
- Known fixed cost – stays on budget
- Modular panel construction – easy to erect and change
- Easy two-person assembly
- Sound absorbing interior surfaces
- Rugged corrosion resistant galvanized steel construction
- All Components meet ASTM E-84 Class I Fire Rating
- High performance acoustical doors and viewing windows
- Safe effective exhaust gas extraction and cooling air flow



ORDER ONLINE: TheCarlsonCompany.com

OR CALL: 800-222-6199

JDI GAS CADDY & WASTE OIL EVACUATORS



JDI HGC-30UL

Catalog No. 12652

The JDI HGC-30UL Gas Caddy is the ideal solution for the storage and dispensing of gasoline in your Service Department. Specifically designed to comply with labor and safety laws, JDI builds the only UL listed Gas Caddies in North America.

The heavy-duty welded steel construction is built to last. A two-way rotary pump allows your technicians to both siphon and dispense fuel. To siphon gasoline into the caddies tank, simply turn the pump's operating handle counter-clockwise. To transfer gasoline from the cart to any fuel tank, turn the handle in the opposite direction. What could be more simple?

FEATURES

- Heavy-Duty Bi-directional pump
- 5.7 gallons/minute@72 RPM
- One gallon per 12 turns
- UL Listed & OSHA Compliant
- Firescreened safety vent & fuel gauge
- 8' clear hose with anti-static grounding wire
- 2" Filler neck for easy fill-ups
- 1/4" Drain hole to remove contaminants
- Static ground wire with clamp
- See-through hose for in-line fuel viewing
- Large 10" diameter rubber tires for easy mobility

"Quick Lube" oil change service keeps costs down and efficiency up!

Designed to remove used oil and other fluids from any vehicle when conventional draining methods are not practical. Charged unit is completely portable. Fluid removal can be done almost anywhere without the need of an air hose.

Fluid evacuators remove used oil and other "non-flammable" fluids from almost any vehicle using compressed air and an on-board venturi vacuum process.

Evacuators are great for a variety of applications including:

- Quick Lubes - Avoid stripped drain plugs. Makes it easy to correct overfills.
- Motorcycle/ATV Service - Perfect for oil changes.
- Marine Applications - Boats, Jet Skis and other PWC.
- Farm & Industrial - Tractors, generators, off-road equipment.

6-GALLON WASTE OIL EVACUATOR

Catalog No. JDI-6EV

20-GALLON WASTE OIL EVACUATOR

Catalog No. JDI-20EV



Specifications:

	6EV	20EV
Gallons	6-gallon	20-gallon
Suction Capacity	4-gallons	14-gallons
Air Pressure For Vacuum	110-115 psi	110-115 psi
Depressurization Time	60-90 sec.	120-150 sec.
Suction Speed	.04-.05 gpm	.04-.05 gpm
Material	Steel	Steel
Wheel Size - Front	N/A	4" Swivel
Wheel Size - Rear	7" Fixed	7" Fixed
Weight	45 lbs.	55 lbs.

FEATURES INCLUDE

- 6- or 20-gallon capacities
- Heavy-duty steel construction for years of trouble-free service
- Powerful venturi vacuum generator
- Easy-to-read vacuum gauge
- 7' suction hose
- Six suction probes for most applications
- Convenient storage tube for suction probes
- Wheels and casters are oil and chemical resistant for longer life
- 10' quick disconnect evacuation hose
- Sight tube for quick indication of fluid level



ORDER ONLINE: TheCarlsonCompany.com

OR CALL: 800-222-6199

JDI AIR OPERATED OIL DISPENSING SYSTEMS

Complete Packages - includes all required equipment. For motor oil, synthetic oil, hydraulic oil and ATF. Designed for 16-gallon and 55-gallon drums (drums not included).

Specifications:

Pressure Ratio	3:1
Air inlet pressure	70 – 115 psi
Air inlet connection	1/4" NPT (Female)
Air motor effective diameter	2.49" (63mm)
Max pressure	348 psi
Outlet connection	1/2" NPT (Male)

FEATURES INCLUDE

- Powered by 3:1 ratio medium pressure pump
- Differential air motor ensures smooth pumping
- Heavy-duty control valve
- 10' delivery hose



55-GAL

Catalog No. JDOL-55
(optional Drum Dolly available MDS-25-3PH)

16-GAL

Catalog No. JDOL-16
(Pictured w/optional Drum Dolly JDI-16B)

Model No.	Container	Pump	Hose	Delivery Gun	Cover	Weight
JDOL-16	16-gal	JD-3610	JDM-1038	JD-3930	JD-3566A	26 lbs.
JDOL-55	55-gal	JD-3615	JDM-1038	JD-3930	NA	22 lbs.

PROFESSIONAL SERIES HOSE REELS

Designed for durable and dependable operation. Air, water and oil applications.

FEATURES INCLUDE

- Heavy-duty steel construction
- Corrosion resistant powder-coat finish
- 7" wide "L" shaped base for positive support
- Four-direction non-sag rollers reduce hose wear and abrasion
- Spring is fully enclosed and lubricated
- Full-flow swivel prevents leakage
- Guide arm is adjustable up to nine positions permitting wall, ceiling or floor mount



Specifications:

Model No.	PSI Rating	Hose Size	Hose Length	Weight
Low Pressure for Air, Water & Antifreeze				
JD-3850	300 psi	3/8"	50'	53 lbs.
JD-1250	300 psi	1/2"	50'	59 lbs.
Medium Pressure for Motor Oil & ATF				
JDM-3850	2250 psi	3/8"	50'	53 lbs.
JDM-1250	2250 psi	1/2"	50'	57 lbs.

NON-PRESET ELECTRONIC METER GUN

Catalog No. JD-3900



FEATURES INCLUDE

- Easy-to-read LCD display
- Measures in quarts and liters
- Non-drip nozzle
- Includes flex spout with automatic tip



BATTERY CHARGING & TESTING

DELTRAN & OPTIMATE BATTERY CHARGERS

Safe, No Spark Charging!

Deltran's advanced SuperSmart Battery Tender® Battery Management System is light years ahead of any standard battery charger. Selectable for AGM/Standard/GEL or Lithium (LifePO4) Batteries.

It's the first fully automatic, constant-current battery charger designed to charge and/or maintain up to 10 - 12-volt or 6-volt batteries simultaneously @ 4 amps. To avoid short sparking, the microchip circuitry will not activate output voltage until clips are correctly connected to the battery. Optional 25' extra-long cables available.

FEATURES

- **Safe, No Spark Charging:** Microchip circuitry won't activate voltage output until clips are correctly connected to battery.
- **4-Step Charging** (initialization, bulk charge, absorption mode, float/maintenance)
- **Automatic Storage Mode:** Charger automatically switches to a "Storage" charging (or float) mode when the battery reaches full charge
- **Multiple Battery Charging:** Lights for each set of leads indicate which batteries are "Charging" and which are in the "Storage" mode.
- **Constant Current Charging:** Provides faster charging per battery than conventional chargers
- **Automatic 12-volt charging:** No Controls

10-BANK BATTERY CHARGER

Catalog No. 021-0134-DL-WH



Charge multiple batteries automatically—and fast!

5-BANK BATTERY CHARGER

Catalog No. 021-0133-DL-WH



SPECIFICATIONS

- 12V or 6V switchable @ 4 Amps
- Selectable for AGM/Standard/GEL or Lithium (LiFePO4) *12V only for Lithium
- To avoid short sparking, microchip circuitry will not activate output voltage until clips are correctly connected to battery.
- Simultaneously charges and/ or maintains up to 10 batteries (10-Bank).
- Maintains batteries at full charge.
- 4 amps per output charging current.
- Safety timer: 25 hrs.
- Includes 10 alligator clips (10-Bank) with 7.5 foot cable
- AC Power Cord Length: 6 ft. - 16 AWG
- DC Output Cord Length: 10 in. - 16 AWG
- DC Output Accessory Length: 7 ft.
- Warranty: 3 Years

OPTIONS

081-0148-25-BG4 - 25 FT Extra Long Extension Cables- 4 PACK (Use with Battery Tender® 5, or 10 Bank units.)

OPTIMATE PRO4

Catalog No. TS-53 OptiMate Pro4

Catalog No. C08-322B Replacement Lead (blk)

Catalog No. C08-322R Replacement Lead (red)

The OptiMate Pro4 is the only multi station charger designed for the proper commissioning (initial charging) of all types of powersports batteries. The OptiMate Pro4 can simultaneously and independently commission or recover and then fully charge and maintain up to four 12 volt batteries of any type at once.

The "NEW" mode - is for 1 hour activation charge only for new batteries that have received acid just prior to charging, such as STD flooded batteries with removable filler caps and AGM-MF 'dry-charged' batteries that are delivered with a separate custom acid pack. The 2A / 4A mode - 12 hour max. charge mode is for diagnoses, recovery, charging, testing of low volt sulphated batteries. Suitable for recharge of all batteries including factory activated sealed AGM batteries (e.g. Yuasa YTZ, GYZ) prior to sale.

Includes wall poster with instructions to prepare and charge your customers batteries.

OPTIONS

- | | |
|--------|---------------------|
| TA-13 | 3 Pin Power Cord |
| TS-218 | Wall Bracket |
| O-03 | Extension Cord 6 ft |
| O-04 | Battery Clips |

OPTIMATE PRO-S

Catalog No. TS-171



Now a shop charger that initializes new sealed & filler cap batteries in 1 hour plus desulfates & recovers neglected batteries. Simply decide between a NEW or USED battery selection. Select NEW and a battery receives the correct initialization charge within 1 hour. The USED program allows optional selection between two sizes of battery (<10Ah) and the rest is automatically done for you. Wall mounts are integrated for easy and convenient wall placement.



FEATURES

- **BANKS/CHARGING STATIONS:** 4 (each bank operates independently)
- **CHARGING AMPS (PER BANK):** 4A maximum, Ampmatic control. (2A max. when 2A is selected)
- **SAVE:** Low Volt Start of 1.8V + 2 step desulphation recovery
- **IDEAL FOR:** STD, AGM & GEL 12V batteries from 2 - 40Ah
- **INPUT:** Selectable 110-120VAC/220-240VAC 50-60Hz. with ON/OFF power switch and replaceable fuse protection
- **SAFE:** No risk of overcharging. Sparks suppressed. Safe for long-term battery maintenance. Automatic shut-down if short-circuited or battery disconnected.
- **WARRANTY:** 2 Year Limited



BATTERY CHARGING & TESTING

OPTIMATE BATTERY CHARGERS

BATTERYMATE 150-9

BATTERY CHARGER AND LOAD TESTER



Shown with optional wall bracket (08-0197)

Catalog No. TS-02

OPTIONS

Catalog No. TS-218 Wall Bracket

FEATURES

- Six load test choices from 15 to 150 amps for all starter batteries 2.5Ah to 45Ah
- Choose from two load test durations: 3 seconds (standard crank test) or 15 seconds (long crank & battery capacity check)
- Six constant current charge settings from 1A to 9A for the correct most time effective charging of all types of batteries including filler cap and maintenance free batteries such as AGM, valve regulated (VRLA), flooded (wet) and GEL-electrolyte from 2.5 to 45Ah capacities
- Can commission two batteries of any type per hour
- Temperature sensor adjusts charge voltage according to ambient temperature
- Selectable MF mode activates special charging algorithm designed to effectively charge maintenance free batteries for peak performance and longevity
- Powerful and highly effective high voltage desulfation mode designed to breathe new life into deeply discharged (sulfated) batteries
- Optional steel wall-mount bracket frees up bench space and helps protect charger from caustic battery fumes
- Recommended by most motorcycle O.E.'s
- Two year limited warranty

OPTIMATE PRO8-S

AUTOMATICALLY CHARGE AND MAINTAIN UP TO 8 BATTERIES SIMULTANEOUSLY



OPTIONS

TA-13	3 Pin Power Cord	O-03	Extension Cord 6 ft
TS-218	Wall Bracket	O-04	Battery Clips

FEATURES

- Eight independent charging stations each equipped with a sophisticated 5 stage fully automatic charging program
- Battery type selector: Choose (STD & MF) to charge and maintain all types of starter batteries including filler cap and maintenance free batteries such as AGM, valve regulated (VRLA), flooded (wet) and GEL-electrolyte with a rated capacity of 2.5Ah and greater. Choose "DC" to charge and maintain Deep Cycle batteries
- Use for the proper commissioning of conventional filler cap type batteries
- Powerful high voltage desulfation mode breathes new life into most deeply discharged (sulfated) batteries
- 1.2 amp constant current per station
- Clear and simple battery status indicator panel for each battery
- Sensing circuitry eliminates risk of over charging
- Internal cooling fans control operating temperature
- Works with 6v and 12v batteries
- Not suitable for the initial commissioning charge of MF batteries – see BatteryMate or OptiMate Pro4-S models for this function
- Two year limited warranty

OPTIMATE 6 SELECT BATTERY CHARGER

Catalog No. TM-191



- **CHARGING AMPS:** 5A (Ampmatic)
- **SELECTION:**
 - Charge - 14.4V for STD batteries / 14.7V for premium AGM or Deep Cycle.
 - Powersupply - 13.6V
- **SAVE:** Low Volt Start of 0.5V + 2-step desulphation recovery.
- **IDEAL FOR:** STD, AGM, GEL & Deep Cycle 12V batteries from 3 – 240Ah.
- **INPUT:** Global (100-240V 50-60Hz), high efficiency (CEC listed), fully sealed.
- **STYLE:** Weatherproof case with wall mounts, with 6ft / 180cm AC supply lead and 6ft / 180cm charge lead ending in SAE connector. Weatherproof battery lead & standard battery clip set included.

The world's most advanced battery charger for vehicle starter & deep cycle batteries! OptiMate 6 Select is perfect for starter and deep cycle 12V batteries that demand accurate temperature controlled charging and unsupervised safe long term maintenance. Voltage selection (14.4V / 14.7V) ensure the battery receives charge at the correct voltage.

Ampmatic charge control adjusts current to suit any battery size OR condition for fastest and most complete charge i.e. small batteries receive less current, large batteries up to maximum current.

Special feature: **POWER SUPPLY** mode delivers stable power for vehicle system reprogramming, show room vehicle demo or retaining memorized settings when battery cables are disconnected to fit powered accessories or replace the battery.

OPTIMATE LITHIUM 4-BANK, 8-STEP BATTERY CHARGER-TESTER-MAINTAINER



Catalog No. TM-485

This Lithium Ion 4-BANK Battery Charger is fully automatic, charges at .8 Amp Hour and works with all 12 Volt Lithium Batteries – Charge up to 4 Lithium batteries at once! A unique LiFePO4 specific program recharges and balances cells within the battery efficiently and safely. This program delivers current to the vehicle circuitry, protecting and keeping the battery at 100% charge. Protects your investment and guarantees Lithium Iron Phosphate (LiFePO4 / LFP) batteries will perform as advertised for a very long time.



SAFE: No risk of overcharging. Totally safe for vehicle electronics. Sparks suppressed. Safe for long-term battery maintenance. Automatic shut-down if short-circuited or battery disconnected. 3-year limited replacement warranty



ORDER ONLINE: **TheCarlsonCompany.com**

OR CALL: **800-222-6199**

TECMATE DIAGNOSTIC TOOLS

TECMATE



VACUUMMATE ALL WEATHER The ultimate 4-channel vacuum synchronizer

The VacuumMate All Weather is a precise four channel vacuum meter designed specifically for intake synchronization of engines with multiple carburetors or throttle bodies. In addition to its synchronization capabilities, the VacuumMate All Weather is the only tool of its kind to offer a dynamic mode that allows the technician to perform upper engine diagnostics using the intake vacuum curve to detect potential upper engine problems such as intake leaks, valve leaks, air filter blockage and low compression.

Catalog No. TS-72 VacuumMate ME Kit (with internal battery)
Kits include: 08-0201 flex-rigid 5mm adapters (4ea.), 08-0202 flex-rigid 6mm adapters (4 ea.), C08-193C battery connector cord set, C08-251A T-connector

OPTIONAL ACCESSORIES

Catalog No. TS-222 soft carry/storage case
Catalog No. TS-221 4 to 6 Channel Adapter

CARBIMATE - Economical electronic two channel vacuum meter
Catalog No. TS-111

CarbMate is a reliable, cost effective & portable replacement for both mercury sticks and unreliable dial gauges. Synchronization of 4 linked carburetors is made easy using the optional 4-channel adapter kit.

TECMATE



OPTIONAL ACCESSORIES

Catalog No. TS-220 4-channel adapter kit
Catalog No. TS-200 Flexi Rigid 5mm Adaptor
Catalog No. TS-221 Flexi Rigid 6mm Adaptor
Catalog No. TS-222 soft carry/storage case

IGNITIONMATE -

Quick and precise ignition system troubleshooting without disassembly
Catalog No. TS-91

Kit includes: **TS-233** battery connector cord set, **TS-207** stick coil adapter, **TS-226** low tension lead kit, **TS-223** molded rubber holster, **TS-208** HT pickup, **TM-99** probulator back probes, **TS-222** soft carry/storage case (optional).

TECMATE



SOLAR JUMP STARTER 12 Volt 900 Peak Amp

Catalog No. ES2500

The ES2500 is the ideal entry level professional unit from the original jump starter company. It features a powerful battery specifically designed for vehicle jump starting, enabling it to deliver multiple jumps per charge and start what doesn't want to be started. Ideal for a variety of tasks, it can quickly and easily start Motorcycles, personal watercraft, cars, trucks, SUVs, boats and more. It is the perfect battery jump starter for everyone, from garage mechanics to professional techs who will use it 7 days per week.



FEATURES

- 1100 Peak Amps
- 300 Cranking Amps
- ES Series battery
- Automatic recharging
- LED battery status indicator
- 19" #4 AWG cables
- Industrial Grade Hot Jaw™ clamps
- DC outlet to power 12 Volt accessories
- 1 year limited warranty

ACCESSORIES FOR VACUUMMATE, CARBMATE AND IGNITION MATE

Molded Rubber Holster



• Designed for the CarbMate and IgnitionMate

TS-223 Molded Rubber Holster (blk)
TS-224 Molded Rubber Holster (red)

Soft Carry/Storage Case



• Designed for the VacuumMate, CarbMate, IgnitionMate and Ignitionmate Duo

TS-222 Soft Carry/Storage Case

Probulator Lead Set



• Enter connector housings without damage to connector or cable. Establishes sure electrical contacts within connectors. Accepts standard 4mm banana plugs. 2 Pairs per set.

TM-99 Probulator Lead Set



INFRARED INDUSTRIES EXHAUST GAS ANALYZERS



EXHAUST GAS ANALYZER

Diagnostics and Performance Tool

Catalog No. FGA4000XDS

When you need a reliable gas analyzer that can accurately speed up your emissions, tune-ups, and diagnostics testing, the FGA4000XDS and the FGA4500 Gas Analyzers are the perfect answer. By offering immediate results in seconds, these analyzers are the fastest machines on the market. Certified to BAR and OIML standards, they provide a portable, accurate, and quick solutions for every Powersports shop.

These units measures up to five gases including Hydrocarbons (HC), Carbon Monoxide (CO), Carbon Dioxide (CO2), Oxygen (O2), and Oxides of Nitrogen (NOX). Economical filters and sensors are replaced in seconds, and the sample cell and optics can easily be cleaned in the field!

Both models will instantaneously calculate readings and give you Air to Fuel Ratio (AFR), Lambda, and Grams per Mile (GPM) or Grams per Kilometer (GPK) in real time. When attached to a tachometer (optional), it reads engine speeds of up to 30,000 RPM. The optional built-in printer documents test results and allows shop owners to print their shop name, address, and other custom header text on the printout for customers' records. You can diagnose fuel-related issues accurately and quickly to provide the service that your customers need."



Catalog No. FGA4500
(LCD Screen Display)

Gas Analyzer, INCLUDES: 4 Gas, HC, CO, CO2, O2. 120V, Includes AC power cord, Sample Hose, Sample Probe Handle & Operator's Manual.

OPTIONAL ACCESSORIES

Fifth gas NOx transducer, 8 analog output connection module: 0-5V or 0-10V, Induc P/U Lead for RPM, Serial Cable for PC, Software for display and logging, Internal/ External Printer, Mobile Cart 2 shelves, Extended 2yr warranty

HANDHELD EXHAUST GAS ANALYZER

Fast • Compact • Accurate • Versatile

Catalog No. HM5000

OPTIONAL ACCESSORIES

NOx Sensor, Tach Pickup Cable, Serial Cable

Motorcycle Fittings:

- 2, 4, and 6 cylinder manifolds
- 6mm fitting for Honda, Yamaha or Kawasaki
- 10mm fitting for Ducati

IRI Display PC Software for remote control and display of the analyzer from a PC and record and playback of data

12V DC Cable
Analog outputs
Portable Printer
1yr wtty, Extended warranty avail.



Handheld Exhaust Gas Analyzer, INCLUDES: internal rechargeable battery, built in data recorder, oxygen sensor, sample hose, Mini Probe Handle, water separator, purge pump and Operator's Manual.

The high performance edge you've been looking for is finally here! Compact, fast responding, and accurate, the HM5000 helps you professionally tune in the shop or on the road.

It also lets you perform road testing on the go. Simply connect the HM5000 to your vehicle's exhaust while you drive and in less than a second you'll see the exhaust gas composition.

Determine the exact amount of Hydrocarbons (HC), Carbon Monoxide (CO), Carbon Dioxide (CO2), Oxygen (O2), and Oxides of Nitrogen (NOx) your vehicle is emitting.

Get instant readings on up to five gases, plus Air to Fuel (AFR) Ratio, Grams Per Mile (GPM) and Lambda to help you tune that ever-so-tricky carburetor or injection system.

See all the data on a road test, or when taking laps around the track, and replay the results without any additional equipment. Or, your can connect the HM5000 to your PC and download and store your test drive data for historical analysis. This potent combination of gas measurement and tach reading is all you need to tune or troubleshoot your engine at various RPM's.



MOTORSCAN DIAGNOSTIC SCAN TOOL



MOTORSCAN 6050

The MemoBike Motorscan 6050 is the ultimate Diagnostic Scan Tool for Motorcycles, Dirt Bikes, Scooters, ATVs and UTVs, with OEM-level coverage of 79 brands, 5,000+ models and over 16,000 systems.

The Motorscan 6050 is an innovative handheld instrument designed to analyze the advanced diagnostics of the world's most important new generation of Motorcycles and Powersports vehicles. An essential instrument, extremely easy to use, but comprehensive and constantly updated. Within the reach of all users and rich in features that make it a must for even the most demanding technicians.

It allows the technician to perform factory service procedures, and the scan tool will display ECU data, reads and erases stored faults, resets service lights, allow injection adjustment, identify valve position, program new keys, and more.

Catalog No.
MS6050DMM



MOTORSCAN Functions include:

- Vehicle data information includes connector location & cable identification
- Automatic or manual vehicle search modes
- ECU / VIN display
- Read & reset stored/live fault codes & lights
- Fault code database includes code descriptions
- Live data display including: RPM, battery voltage, throttle angle & more
- Component test & activation functions include: injectors, ignition coils, fuel pumps & more
- Data logging function includes ECM parameters
- Idle, injection, throttle position sensor adjustment
- Reset auto-adaptive parameters to zero
- ABS air purge & pressure test function
- Key encoding/programming & PIN retrieval
- Unlock & configure immobilizer/alarm systems
- Body, suspension, traction control computer diagnosis
- Radio, instrument panel, handlebar controls diagnostics
- Tire pressure monitoring (TPMS)
- and more!

AVAILABLE KITS:

STANDARD KIT: MS6050R17 (add your Vehicle Specific cables)

Includes the 6050 Motorscan MEMOBIKE Universal multi-brand diagnostic Scan Tool in a shock-absorbing Carrying Case, complete with Universal Clamp Cable, Battery Cable w/ Clamps, USB Cable, Master Cable, including unlimited use software. Annual Software upgrades available.

MASTER KIT: MS6050R17 (Includes the 10 most popular cables)

Includes the 6050 Motorscan MEMOBIKE Universal multi-brand diagnostic Scan Tool in Carrying Case, Battery Cable & Universal Cable, USB Cable, Master Cable, w/ unlimited use software and the 10 most popular OEM cables, incl. MS460 (Honda), MS463 (Suzuki), MS458 (Kawasaki), MS525 (BMW), MS541 (Harley-Davidson), MS480 (Harley-Davidson), MS501 (BRP/CAN-AM), MS516 (Polaris), MS475 (Yamaha), MS499 (Aprilia, Cagiva, Ducati, MotoGuzzi, MV Agusta, Piaggio, Vespa and more) Annual Software upgrades available.



VEHICLE SERVICING & REBUILDING

HARDWARE TECHNICAL FEATURES

- **CPU:** Cortex M3 (96 Mhz)
Bluetooth Ready
- **INTERNAL MEMORY:** 32 MB RAM memory, 4GB Flash memory
- **DIAGNOSTIC:** Db26 ISO22900-1 (MVCI), Internal Multiplexer
- **USB INTERFACE:** Mass Storage connection for software update
- **SUPPLY:** Internal with LiPoly rechargeable battery
External, 5V with cable
From vehicle, 8-16V
- **DISPLAY:** Led LCD 3.5" full color high-definition 320x240 pixel
- **DIMENSIONS:** 6.9" x 4.4" x 1.4" (175 x 112 x 36 mm)
- **WEIGHT:** 9.3 oz. (263 g)
- **AUDIO:** 1 speaker
- **KEYBOARD:** 9 keys



MOTORSCAN COVERED BRANDS 47 Vehicle specific OEM-level Connector Cables available (phone for details)

ADIVA	BAJAJ	SHINERAY	CAGIVA	
INDIAN	HUSQVARNA	BRIXTON	LANCE	
PEUGEOT	RIEJU	KTM	TGB	GAS GAS
AEON	BENELLI	SINNIS	CF MOTO	MONDIAL
PIAGGIO	HYOSUNG	BROUGH	LAVERDA	ZONGSHEN
AJP	RIYA	SUPERIOR	TRIUMPH	DAFRA
HARLEY-DAVIDSON	BETAMOTOR	KVN MOTOR	COLEMAN	MBK
POLARIS	ROYAL ENFIELD	STELS	CSC	DERBI
APRILA	BIMOTA	BRP	MACBOR	VOXAN
HISUN	KAWASAKI	CAN-AM	VERVEMOTO	DUCATI
ARCTIC CAT	BMW	KYMCO	MALAGUTI	MH
HONDA	KEEWAY	SUZUKI	VESPA	MINSK
QUADRO	SHERCO	BUELL	DAELIM	YAMAHA
HUSABERG	BOOM TRIKES	SYM	MASH	GARELLI
	KSR MOTO	LAMBRETTA	VICTORY	MITT
				GEON
				MOTOGUZZI
				GG
				TECHNIK
				MOTO MORINI
				GILERA
				MV AGUSTA
				GOES
				MZ

MS6053 DIVAS is an important optional accessory for the MS6050 scanner - Extending the range of diagnostic capabilities through a series of additional applications necessary for proper tuning.

MS6053 DIVAS Functions:

- Synchronization of the throttle valves on the carburetor and fuel injection systems (max 4 channels)
- Dynamic analysis of the manifold intake pressures
- RPM reading
- Color graphing of measured data
- Synchronization procedures integrated with diagnostic functions of the Engine Control Unit (idle speed control lock, TPS and/or self-adaptive parameter reset, analysis of fault code memory, verification of proper operating conditions, etc)
- 3 analog input ports for dynamic analysis and data acquisition of vehicle sensors
- Real-time monitoring and storage of measured data
- Built-in microphone



WINONA VAN NORMAN BORING BAR

The CB1401 is the fastest and most efficient boring machine you can buy to bore motorcycle and small engine cylinders. Simple, accurate setup combined with rapid and flexible operation make this machine a profitable investment. Two spindle speeds and infinitely variable feed rate allow the operator to obtain the exact surface finish desired. The hard-chromed spindle (included) and pressure lubricated adjustable support bearings assure long and trouble free operation. The unique tool support mounted on top of the spindle allows for heavy cuts (up to .040") at large diameters, featuring anti-chatter dampening and support of the tool bit further out. The CB1401 boring bar comes complete with work lamp, table parallels (set of two), tool bit micrometer, hex wrench and deluxe floor mounted cabinet.

Custom designed
for the Powersports
Industry!

LEASE
TO OWN!



STANDARD EQUIPMENT

- 5123 Cylinder Hold Down Kit
- 2431 Centering Cone
- 1780 Anti-Chatter Device
- 5121 Tool bit Micrometer (Inch)
Or
- 5122 Tool bit Micrometer (Metric)
- 1255 Parallels (set of 2)
- 1790-1 Tool Bit 1.0" Tool Holder
- 1790-2 Tool Bit 1.3" Tool Holder
- 1790-3 Tool Bit 1.6" Tool Holder
- 1790-4 Tool Bit 2.0" Tool Holder
- 1750 Tool Cartridge (Holds Tool Bit)

OPTIONAL EQUIPMENT

- 1900 Big Bore Kit - increases range from 4" to 4-1/2"
(includes #6371 optional 3 finger centering device)
- 6371 3 Finger Centering Device (recommended)
- 1876 Replacement Carbide Inserts

SPECIFICATIONS

- **BORE RANGE:** 1.5" (38mm) - 4" (101mm)
(optional kit #1900 increases range to 4-1/2")
- **STROKE:** 8" (203 mm)
- **SPINDLE SPEEDS:** 222 & 335 RPM
- **SPINDLE FEEDS:** Infinitely variable
- **MOTOR:** 1/2 HP, 120V-60Hz-1Ph or
(Export) 220V-50Hz-1Ph
- **MACHINE DIMENSIONS:** 36"w x 18"d x 42"h
- **WORK TABLE DIMENSIONS:** 11" x 18"

WINONA VAN NORMAN CYLINDER BORING BAR

Catalog No. CB1401

FEATURES

- REPLACEABLE INSERT CUTTING BITS: 3-edged, presharpended carbide
- DIRECT READING MICROMETER: Inch or metric
- CENTERING CONE SYSTEM: For fast, accurate setup
- ANTI-VIBRATION TOOL SUPPORT: For heavy cuts
- RAPID ADJUST CAM LOCK WORKPIECE HOLD DOWNS
- AUTOMATIC UPPER AND LOWER FEED STOPS
- DELUXE CABINET: Heavy gauge steel - 36"w x 18"d x 42"h -
with drawer and two storage areas



Standard Accessories



6371 3-Finger
Centering Device



Cam Lock
Hold Downs



Power-stroke the
"heart" of the engine!

WINONA VAN NORMAN CYLINDER HONING MACHINE

Catalog No. PS1370
(Friction Feed Head
Catalog No. 819216 not incl.)



OPTIONAL FRICTION FEED HONE HEAD

Catalog No. 819216
Hand friction against head causes stones to expand or retract while honing.

FEATURES

- FASTER, EASIER & SAFER: Foot control included. Power Head traverses sideways on ball bearings for easy positioning
- VERSATILE: Can accommodate singles, and many twins, triples and fours
- HONES CYLINDERS WITH TORQUE PLATE ATTACHED
- STROKE: Adjustable by setting limit switches 8" max.
- STROKE SPEED: Fully adjustable
- LOAD METER: Indicates if bore is straight or tapered
- PAUSE BUTTON: Permits manual stroking override
- HONING OIL: Pump re-circulates 8 gallons @ 5 GPM
- DWELL BUTTON & AMMETER: Allows manual removal of taper
- OPTIONAL FRICTION FEED HONE HEAD: Allows effortless changing of honing diameter, while running.

WINONA VAN NORMAN CYLINDER HONING MACHINE

The PS1370 Power Stroke Cylinder Honing Machine is an ideal machine for the motorcycle/small engine shop. Filling an important need of powersports dealers and machine shops, this power-stroking machine hones cylinders with controlled accuracy. Utilizing a clean, recirculating, 8 gallon, oil-bath environment, the machine helps the operator produce a consistent RMS surface finish every time. It detects and corrects tapered bores, while taking the work out of honing piston clearance.

STANDARD EQUIPMENT

- 1015 Honing Oil Pump
- 1313 Work Light
- 1374 1/2" Jacobs Chuck Kit
- 6114 Small Engine Fixture

OPTIONAL EQUIPMENT

- 819216 - AN Style, Friction Feed Hone Head w/dual friction feed (2.5" - 5.5") - (required)
- 819239 - SN/JN Friction Feed Hone Head (1.75" - 2.75")
- 860080 - SNJ Style Manual Hone Head (1.25" - 1.75")
- 860071 - SN Style Manual Hone Head (1.75" - 2")
- 860070 - JN Style Manual Hone Head (2" - 2.6" range)

SPECIFICATIONS

- **HONING RANGE:** (Max.) 1.25" (31.75mm) - 5.5" (139mm) (with optional Hone Heads)
- **STROKE:** Adjusts to 10" (254mm)
- **MOTOR:** 1/2 HP, 115V
- **AIR REQUIREMENTS:** 110 psi, @ 3 cfm
- **MACHINE DIMENSIONS:** 32"w x 44"d x 60"h

WINONA VAN NORMAN CYLINDER HONING TANK

Catalog No. CH1300



FEATURES

- QUICK SET-UP
- POSITIVE CLAMPING
- PROMOTES SAFE HONING
- HOLDS WORK PIECES UP TO 19" LONG

The CH1300 Honing Tank was designed for ease and safety of operation while honing small engine cylinders. The cradle holds the cylinder in place leaving hands free for operation. Choosing the honing angle that works best for you is easy with the over-sized "easy-to-handle" locking knobs.

STANDARD EQUIPMENT

- 1313 Work Light
- 1015 Honing Oil Pump
- 6114 Small Engine Fixture

SPECIFICATIONS

- **RANGE:** Handles cylinders & heads up to 19"
- **COOLANT PUMP:** 110V, 5 G.P.M.
- **HONE OIL CAPACITY:** Holds 4 gallons
- **DIMENSIONS:** 26"w x 19"d x 33"h



ORDER ONLINE: TheCarlsonCompany.com

OR CALL: 800-222-6199

Precision instruments
for accurate service!



COMBI-MIKE
Catalog No. 159-211

DIGITAL OUTSIDE MICROMETERS (combination inch/metric)

The Combi-Mike gives readouts in both inch and metric systems simultaneously as you rotate the spindle. Inch measurements are indicated on the thimble/sleeve while the accurate metric equivalent is displayed as a digital readout in the display window. Features include quick-and-easy zero adjustment, clear graduations, satin chrome finished thimble and positive locking clamp. Comes complete with fitted carrying case.

Catalog No. Counter	Range		Resolution	
	Thimble	Digital Counter	Thimble	Digital
159-211	0-1"	0-25mm	.0001"	0.01mm
159-212	1-2"	25-50mm	.0001"	0.01mm
293-332	2-3"	50-75mm	.0001"	0.01mm
293-333	3-4"	75-100mm	.0001"	0.01mm

INCH OUTSIDE MICROMETERS

Catalog No.	Range Thimble	Resolution Thimble
103-135	0-1"	.0001"
103-136	1-2"	.0001"
103-217	2-3"	.0001"
103-218	3-4"	.0001"

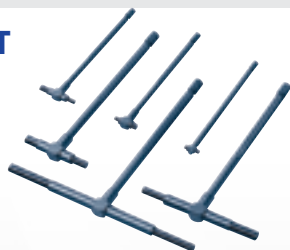
METRIC OUTSIDE MICROMETERS

Catalog No.	Range Thimble	Resolution Thimble
103-137	0-25mm	0.01mm
103-138	25-50mm	0.01mm
103-139-10	50-75mm	0.01mm
103-140-10	75-100mm	0.01mm

TELESCOPING GAGE SET

(Set of 6)

155-903- Range .315-5.90"



MAGNETIC STAND

Catalog No. 7011BN



This stand accepts all AGD-type dial indicators and comes complete with 6" adjustable rod and universal clamp with 132 pound pull. Test indicators and probes having 3/8" diameter shank and/or lug-back with 1/4" diameter mounting hole. The On-Off switch offers instant mounting and dismounting without any adverse effect to the indicators or work surface.

MITUTOYO MEASURING INSTRUMENTS

Mitutoyo, manufacturers of high quality measuring instruments for over 70 years, provides specially engineered models with ranges to fit the needs of the Powersports service industry. All instruments feature highly usable calibrations with either a combination inch-and-metric, inch, or metric readout system to meet U.S. Federal Standards.



CYLINDER BORE GAGE

Catalog No. 511-172

Close tolerance I.D. measurements, such as cylinder diameter, out-of-roundness and taper are best accomplished with a cylinder bore gauge. Each Mitutoyo model is furnished with interchangeable anvils and all necessary accessories. Available in either inch or metric graduations. Bore Gauges come complete with fitted carrying case.

	Range	Graduation	Probe Depth	No. of Anvils	No. of Spacers
511-164	1.4"-2.5"	.0001"	6"	6 pcs.	4
511-166	2.0"-6.0"	.0001"	6"	11 pcs., 2" subanvil	4
511-172	35-60mm	0.01mm	150mm	6 pcs.	4
511-713	50-100mm	0.01mm	150mm	11 pcs.	4



DIAL INDICATOR

Catalog No. 1044-01

Available in either inch or metric systems. Spindle rack, pinions and pivots are constructed of hardened stainless steel. Contact point is chrome-plated tool steel. Zeroing is quick and easy in any position. Clamping screw locks the setting. In addition to stem mounting, a lug-type back with 1/4" hole is positioned on each indicator for mounting purposes.

Catalog No.	Graduation	Range Per Revolution	Range	Dial Reading
2410S	.001"	.1"	.25"	
0-100				
2416S	.001"	.1"	1"	0-100
2050S-01	0.01mm	1mm	20mm	0-100



MICROMETER STAND

Catalog No. 156-101

(.5" through 4" micrometers)



SMALL HOLE GAGE SET

(Set of 4)

Catalog No. 154-901

(Range - .118 - 5.11")



NEWAY VALVE SEAT CUTTING KITS & MOTORIZED POWER UNIT

All kits can be hand operated, or used with optional variable speed motorized unit (Catalog No. PU 1800), and include seat cutting heads, narrowing cutters, solid pilots, brush, wrenches, fitted tool case and complete instructions.



Standard Kits	Deluxe Kits*	Recommended For Use
KM 2451	D82-HD	Harley-Davidson
KM U470	N/A	HD V-Rod Upgrade Kit
KM 2487	N/A	Honda
KM 2493	N/A	Yamaha
KM 2537	N/A	Kawasaki
KM 2507	N/A	Suzuki
KM 2300	N/A	BMW
KM 2573	N/A	General Motorcycle Kit
KM 2563	D82-2/4V	General Japanese Motorcycle Kit
KM 2140	N/A	General Japanese ATV Kit

(Additional kits and replacement tungsten carbide blades are available)

*Deluxe kits include a selection of these extras:

Additional solid pilots to guarantee a snug fit with all appropriate valve guide sizes.

Radius blade(s) for blending combustion chamber smoothly into top narrowing cut.

All Deluxe Kits include one pint spray bottle of concentrated water-soluble seat cutting fluid.

D82-HD - DELUXE HARLEY-DAVIDSON KIT

CU622	Cutter - Short Hub 1-1/2" dia., 31°-46°
CU205	Cutter 1-1/2" dia., 60°
CU642	Cutter - Short Hub 1-3/4" dia., 31°-46°
CU293	Cutter 1-3/4" dia., 60°
140-5/16	Solid Pilot - 5/16" dia. -3, -2, -1, STD, +1, +2*
140-11/32	Solid Pilot - 11/32" dia. -4, -3, -2, -1, STD, +1, +2*
140-3/8	Solid Pilot - 3/8" dia. -2, -1, STD, +1, +2, +3, +4, +5*, +6*
140-7.02	Solid Pilot - 7.02 mm
TW505	T-Wrench
TC354*	3/4" Radius Blade
KACC246	Accessories Kit
CA160	Tool Case
PU707*	Cutting Fluid (1 pint spray bottle)
Manual	Operator's Manual

(*Deluxe upgrades for KM2451)

D82-2/4V - DELUXE JAPANESE MOTORCYCLE KIT

CU132	Cutter - .830" dia. 32°	140-5.52* Solid Pilot 5.52 mm
CU131	Cutter - .850" dia. 45°	140-6.6 Solid Pilot 6.6 mm
CU133	Cutter - .874" dia. 60°	140-6.62* Solid Pilot 6.62 mm
CU122	Cutter - .975" dia. 45°	140-6.98 Solid Pilot 6.98 mm
CU123	Cutter - .975" dia. 31°	140-7.0 Solid Pilot 7.0 mm
CU121	Cutter - 1" dia. 15°	140-7.02 Solid Pilot 7.02 mm
CU111	Cutter - 1" dia. 60°	140-7.98* Solid Pilot 7.98 mm
CU212 *	Cutter - 1-1/4" dia., 15° x 75°	140-8.0 Solid Pilot 8.0 mm
CU270	Cutter - 1-1/4" dia., 60°	140-8.02 Solid Pilot 8.02 mm
CU607	Cutter - 1-1/4" dia., 30°	TW505 T Wrench
CU608	Cutter - 1-1/4" dia., 45°	TW503-1 Adapter
CU626	Cutter - 1-1/2" dia., 30° x 45°	TC355* 3/8" Radius Blade
CU205	Cutter - 1-1/2" dia., 60°	TC352* 1/2" Radius Blade
100-4.0	Solid Pilot 4.0 mm	TC354* 3/4" Radius Blade
100-4.5	Solid Pilot 4.5 mm	KACC246 Accessories Kit
100-5.0	Solid Pilot 5.0 mm	CA497 Tool Case
100-5.5	Solid Pilot 5.5 mm	PU707* Cutting Fluid (1 pint spray bottle)
100-5.52	Solid Pilot 5.52 mm	Manual Operator's Manual
100-6.0	Solid Pilot 6.0 mm	
100-6.6	Solid Pilot 6.6 mm	
140-5.0	Solid Pilot 5.0 mm	
140-5.5	Solid Pilot 5.5 mm	

(*Deluxe upgrades for KM2563)



MOTORIZED UNIT (Optional)

Catalog No. 1800
(Headstand not included)

The PU 1800 Power Unit is ideal for busy shops. The 115 volt, variable speed drive unit rolls along a bench mounted track to quickly position over the valve seat. The power unit's double universal joint transmission easily adjusts to any cylinder head shape. Light downward pressure on handle provides perfect results effortlessly. Unit includes motor, transmission, trolley, track, and foot switch. (A.C. Headstand optional)



ORDER ONLINE: **TheCarlsonCompany.com**

OR CALL: **800-222-6199**

BRM FLEX-HONE TOOLS & HANDY ANTI-FATIGUE MATS

CYLINDER FLEX-HONE TOOLS



Fast, efficient cylinder deglazing and cross-hatching with a plateaued finish insures immediate ring seating without appreciable stock removal. These unique flexible hones consist of globules of silicon carbide laminated to the ends of high-density nylon. Ideal for port deburring of two-stroke engines, and essential for obtaining a plateaued finish. Power by 3/8" or 1/2" portable electric drill.



For fast ring seating!

HONING OIL QUART
Catalog No. FHQ

Catalog No.	Range	Grit* (Specify)
BC 1-3/4"	1-1/2" to 1-3/4" (38mm to 45mm)	180/240/320
BC 2"	13/4" to 2" (45mm to 51mm)	180/240/320
BC 2-1/4"	2" to 2-1/4" (51mm to 57mm)	180/240/320
BC 2-1/2"	2-1/4" to 2-1/2" (57mm to 64mm)	180/240/320
BC 2-3/4"	2-1/2" to 2-3/4" (64mm to 70mm)	180/240/320
BC 3"	2-3/4" to 3" (70mm to 76mm)	180/240/320
GB 3-1/4"	3" to 3-1/4" (76mm to 83mm)	180/240/320
GB 3-1/2"	3-1/4" to 3-1/2" (83mm to 89mm)	180/240/320
GB 3-3/4"	3-1/2" to 3-3/4" (89mm to 95mm)	180/240/320
GB 4 1/8"	3-3/4" to 4 1/8" (95mm to 105mm)	180/240/320

HANDY ANTI-FATIGUE MATS

Heavy Duty Single Sponge
9/16"



Super Duty Double Sponge
1"



This Anti-Fatigue mat is made of a heavy-duty material that suffers no deterioration from weathering and ozone exposure and complies with the FMVSS-302 for self-extinguishing properties. These mats provide excellent durability when exposed to many organic and inorganic industrial chemicals.

These mats far exceed the competition with a closed cell polymeric sponge base that produces the soft and resilient rebound properties needed in a manufacturing or working environment.

- #17502 Anti-Fatigue Mat - Black Diamond Plate 3' x 5' Super-Duty Double Sponge, 1" thick
- #17501 Anti-Fatigue Mat - Black Diamond Plate 3' x 5' Heavy-Duty Single Sponge, 9/16" thick
- #17503 Anti-Fatigue Mat - Black Diamond Plate 2' x 7' Heavy-Duty Single Sponge, 9/16" thick

Available Colors: Black



SUPERFLOW FLOWBENCHES

FEATURES SF-260

- The evolution of the popular SF-110 flowbench now with FlowCom digital airflow measurement system standard
- Automatic motor controller regulates test pressure or flow from the FlowCom set point
- Range: 0-280 cfm
- Rated for testing at up to 10in. of water test pressure
- Capacity: 260 cfm at 10in. of water
- 240V AC, 12 amp, single phase power
- Dimensions: 27" L x 20" W x 36" H

FEATURES SF-750

- The evolution of the industry standard SF-600 flowbench now with FlowCom digital airflow measurement system standard
- Automatic motor controller regulates test pressure or flow from the FlowCom set point
- Range: 0-750 cfm
- Rated for testing at up to 28" of water test pressure
- Capacity: 575 cfm at 25in. of water
- 240V AC, 40 amp, single phase power
- Dimensions: 27" L x 35" W x 80" H



FEATURES

- RTS Tooling's pressure differential valves measure the pressure differentials in the valve flow area without obstructing the flow path of air being tested
- Accurately port map with complete intake or exhaust system in place
- Test and verify different valve shapes and sizes
- See where all the air is entering the chamber at all valve positions



RTS TOOLING



OPTIONAL EQUIPMENT

F4000P-PDVK-S RTS Tooling standard pressure differential valve kit, kit includes one standard valve where you can select stem, head and valve face angle using RTS standard valve geometry

F4000P-PDVK-SV Additional RTS Tooling standard pressure differential valve: valve only

F4000P-PDVK-C RTS Tooling custom pressure differential valve kit, kit includes one fully custom valve built to your specifications

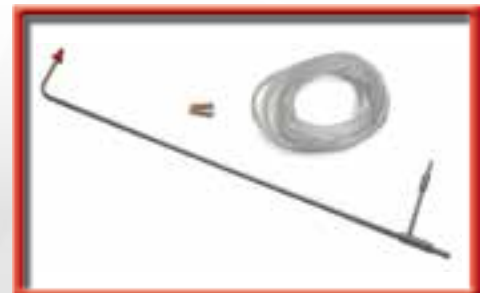
F4000P-PDVK-CV Additional RTS Tooling custom pressure differential valve: custom valve only

F1200A-SW-12 Port Flow Analyzer Pro Software by Performance Trends

F1200A-PT1 Pitot Tube (Velocity Probe) Exhaust

F1200A-PT2 Pitot Tube (Velocity Probe) Intake

F400P-PFA-PTIM Pitot Tube (Velocity Probe) Small Bend Intake



VELOCITY PROBE



TRINCO BEAD BLASTERS

Blast Parts
Faster & Easier!



STANDARD MODEL BLAST CABINET

Catalog No. TR20

BENCH-TOP MODEL

Catalog No. TR20BM
(Also available)

TRINCO has been a leader in blast cleaning equipment since 1951. With many cabinet designs available, we can provide your shop with equipment to meet all of your blasting needs.

The Standard Model Blast Cabinet is ideal for cleaning small parts. It has all the features of a full size cabinet, yet it doesn't require the space. The standard gun system is rated at 14 CFM, 60 PSI. The TR20 can be used as a bench model or combined with a work stand that is 24" high and contains a swing-up shelf and a slide-out tray for disposing of spent media.

FEATURES

- Durable 14-gauge welded steel construction
- Large window, 18" x 10" for excellent viewing
- Easy change window frame
- Air pressure regulator and gauge
- Tungsten carbide nozzle
- Blast Gun rated at 16cfm at 80psi
- Safety foot valve blasting control
- Trap door for easy disposal of spent media
- Heavy-weight rubber gloves
- Incandescent lighting
- 100 CFM dust collector
- 15 lbs. all purpose media included

SPECIFICATIONS

- Inside dimensions: 20"w x 18"d x 18"h
- Overall dimensions: 21"w x 18-1/2"d x 36"h (BM)
- One door opening
- Front opening Lid: 20" x 15"
- Electrical requirements: 115 Volt, 1 Phase, 60 Cycle

OPTIONS

- Water filter (recommended)
- LED Lamp upgrade
- Blow off gun
- Auto Power Basket (8" x 8")
- Protective glass film (10 pack)



STANDARD BLAST CABINET

Catalog No. TR24

FEATURES

- Durable 14-gauge welded steel construction
- Carbon screen workflow
- Large safety glass window, 19-1/2" x 12"
- Easy change window frame
- Tungsten carbide nozzle
- Blast Gun rated at 16cfm at 80psi
- Safety foot valve blasting control
- Trap door for easy disposal of spent media
- Heavy-weight rubber gloves
- BP dust collector
- Incandescent lighting
- 15 lbs. all purpose media included

SPECIFICATIONS

- Inside dimensions: 24"w x 18"d x 23"h
- Overall dimensions: 26"w x 18-1/2"d x 62"h
- One door opening
- Front opening Lid: 24" x 13"
- Dust collector dimensions: 57-1/2"h x 14"d
- Electrical requirements: 115 Volt, 1 Phase, 60 Cycle

OPTIONS

- Water filter (recommended)
- LED Lamp upgrade
- Blow off gun
- Auto power basket (8" x 8" or 8" x 12")
- Spare parts package
- Abrasives
- Protective glass film (10 pack)



MASTER BLAST CABINET

Catalog No. TR36

FEATURES

- Rugged 14-gauge welded steel construction
- Fluorescent lighting to efficiently eliminate shadows
- Large safety glass window, 12" x 24"
- Air pressure regulator and gauge
- Double floor - 1/8" expandex steel plus carbon screen
- Heavy-weight rubber gloves
- Easy change window frame
- Safety foot valve blasting control
- Tungsten carbide nozzle
- Blast Gun rated at 25cfm at 80psi
- Available with BP dust collector or abrasive separator
- 15 lbs. all purpose media included

SPECIFICATIONS

- Inside dimensions: 36"w x 24"d x 23"h
- Overall dimensions: 38"w x 25"d x 64"h
- Two door openings
- Front opening Lid: 36" x 13"
- Side door: 17" x 11"
- BP dust collector dimensions: 57-1/2"h x 14"d
- Electrical requirements: 115 Volt, 1 Phase, 60 Cycle

OPTIONS

- Water filter (recommended)
- LED Lamp upgrade
- Blow off gun
- Turntable
- Protective glass film (10 pack)

Call for additional brochures detailing the entire line of TRINCO Blasting Products.



ORDER
ONLINE:

TheCarlsonCompany.com

OR CALL: **800-222-6199**

NUGIER HYDRAULIC PRESSES & HANDY ANTI-FATIGUE MATS



FOOT-OPERATED HYDRAULIC PRESS

Catalog No. H20-6-3F
(Three-Speed Pump)

While capacity requirements vary somewhat in different shops, 20-ton hydraulic presses are the most popular choice for today's service repair departments. Choose 3-speed pump with foot operation, or single-speed or two-speed pump with hand operation. Basic tooling on all units includes two table parallels and two "V" blocks. All 20-ton presses have slots in uprights to permit fork tube straightening.

FEATURES

- **EASY TO USE:** Self-locking table winch for easy table height adjustments.
- **FASTER OPERATION:** Multiple-speed pumps permit faster ram speeds. Results in fewer strokes which advances the ram further per stroke. Saves time!
- **OVERLOAD SAFETY PROTECTION:** Maximum-capacity relief valve and ram-travel limit valve are hydraulic safety features incorporated on all units.

SPECIFICATIONS

Catalog No.	Capacity Tons	Method of Operation	Ram Travel	Number of Ram Speeds	Min. No. strokes per inch of ram Travel	Width between Uprights
H20-6	20	Hand	6"	1	20	24"
H20-6-3F	20	Foot	6"	3	6-1/2	24"
H40-14	40	Hand	14"	2	3-1/4	30-1/4"

HANDY ANTI-FATIGUE MATS

This Anti-Fatigue mat is made of a heavy-duty material that suffers no deterioration from weathering and ozone exposure and complies with the FMVSS-302 for self-extinguishing properties. These mats provide excellent durability when exposed to many organic and inorganic industrial chemicals.

These mats far exceed the competition with a closed cell polymeric sponge base that produces the soft and resilient rebound properties needed in a manufacturing or working environment.

- #17502 Anti-Fatigue Mat - Black Diamond Plate 3' x 5' Super-Duty Double Sponge, 1" thick
- #17501 Anti-Fatigue Mat - Black Diamond Plate 3' x 5' Heavy-Duty Single Sponge, 9/16" thick
- #17503 Anti-Fatigue Mat - Black Diamond Plate 2' x 7' Heavy-Duty Single Sponge, 9/16" thick

Available Colors: Black



CHAMPION AIR COMPRESSORS

FREE FREIGHT
(Continental U.S.A.)

These two-stage compressors from Champion range in size from 1-1/2 horsepower to 30 horsepower. Air pressure ratings range to 175 PSIG. Each Champion two-stage compressor unit is shipped complete, ready for connection to electrical power. All are available with either horizontal or vertical tanks.

STANDARD FEATURES

- Magnetic Starter
- 0-300 PSIG air pressure gauge
- 10 Micron industrial grade intake filter
- Load-less starting - lower energy costs
- ASME inter-stage pressure relief valve
- ODP NEMA 1760 RPM electric motor
- ASME / NB certified receivers

HORIZONTAL AIR COMPRESSOR

Catalog No. HR10-12



Give your equipment plenty of fresh air!

VERTICAL AIR COMPRESSOR

Catalog No. VR5-8



SPECIFICATIONS

HORIZONTAL TANKS

Catalog No.	Horsepower	Phase*	Delivery cfm @ 175psi	Avail. Tank Sizes (gallons)
HR5-8	5	single or 3	17	30, 60, 80, 120
HR7-12	7-1/2	3ph only	25.6	60, 80, 120, 250
HR10-12	10	3ph only	34.8	80, 120, 250
HR15-25	15	3ph only	54	120, 250

VERTICAL TANKS

Catalog No.	Horsepower	Phase*	Delivery cfm @ 175psi	Avail. Tank Sizes (gallons)
VR5-8	5	single or 3	17	60, 80, 120
VR7-12	7-1/2	3ph only	25.6	60, 80, 120
VR10-12	10	3ph only	34.8	80, 120
VR15F-12	15	3ph only	54	120

OPTIONAL EQUIPMENT

Z685	Oil Monitor for all 2 through 10 HP units
ATDPNEU	Automatic Tank Drain - Pneumatic (recommended)
VIBRO-ISOLATOR	Vibro-Isolator Set (specify model) (recommended)
AFTERCOOLER	Air Cooled (specify model) (recommended)

Phone for additional models & specifications

*Specify phase and voltage when ordering - single-phase units are pre-wired for 230 volts. Three-phase units can be pre-wired for: 200, 208, 230 or 460 volts. Note that three-phase units are less expensive to purchase and to operate. Features and options vary between product configurations as items that may be available on a duplex that are not available for a simplex.



ORDER ONLINE: **TheCarlsonCompany.com**

OR CALL: **800-222-6199**

OMEGASONICS ULTRASONIC PARTS CLEANERS

OMEGASONICS ULTRASONIC BENCHTOP CLEANER

Omegasonics ultrasonic bench top cleaners clean faster and more thoroughly than hand-cleaning and can significantly reduce labor costs while improving cleaning results. These ultrasonic systems are well suited for all powersports shops needing an effective system for stripping grease, debris, contaminants and corrosion from engine cases, carburetors and other parts. An environmentally-sound solution, our Ultrasonic Washers use a wide range of economical cleaning solutions developed for the contaminants being removed and the surfaces being cleaned, whether metal or plastic.

As with all of our ultrasonic cleaners, non-toxic bubbles create a unique cavitation phenomena that seeks out and removes unwanted microscopic particles from the parts you want cleaned. This extraordinary cleaning action infiltrates the smallest crevices and hard-to-reach surfaces, penetrating areas normally inaccessible to other cleaning methods.



Most Popular for Powersports!

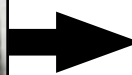
Catalog No. 1420BTD

(Tank Dimensions:

21" L x 15" W x 12-1/4" working depth)

STANDARD FEATURES

- Bench top design
- Hinged lid
- Enclosed generator
- Digital controls
- Ultrasonic Power: 1000 Watts Peak
- Overall Dims: 31" L x 17-1/2" W x 17-1/2" H
- Capacity = 14 gallons OmegaClean
- 1 phase/ 120 VAC/ 15 Amp
- Made in the USA: Two Year Warranty



OMEGACLEAN ULTRASONIC SOAP

Catalog No. Soap 10-1

OmegaClean is our most versatile ultrasonic cleaning soap. This cleaning agent removes oil, grease, carbon, and contaminants from a variety of metals. Contains buffers to protect aluminum finishes and silicates to guard against flash rusting. Will not harm or discolor aluminum. Available in 1 Gal., 5 Gal. & 55 Gallon.



OMEGASONICS PRO SERIES ULTRASONIC CLEANER

The Omega Pro is the most compact version of our portable ultrasonic parts washing line. With 1000 watts of power in a 25 gallon tank, it offers all the effectiveness of our larger units - in a more convenient size. Designed for Powersports Dealers and other industrial applications, this unit offers the user a perfect mid sized ultrasonic cleaner.

OMEGASONICS OMEGA PRO 25 GALLON ULTRASONIC CLEANER

Catalog No. 5022



SPECIFICATIONS

- 25 Gallons
- 4" Weir
- 1 phase/120 VAC/15 Amp
- 1000 Watts Ultrasonic Power
- Tank Dimensions: 18" length x 18" width x 14" working depth (20" Overall)
- Overall Dimensions: 44" length x 21" width x 34" height



ORDER ONLINE: TheCarlsonCompany.com

OR CALL: 800-222-6199

PARTS CLEANING & WASHERS

BUILD-ALL PEDESTAL TYPE PARTS WASHERS

Build-All Patented Water Filtration System!

Extends solvent use up to four months between changes. Water will not mix with mineral spirits-type solvent, so it continually forms a chemical turbulence barrier between the heavier sludge at the bottom and the filtered solvent on top.

Recirculating Parts Washers



PARTS WASHER
Catalog No. PW26 & DM32

STANDARD FEATURES

- Fusible linked fire cover for safety
- Patented water filtration system
- PW26 Includes 16 gallon drum
- DM32 Includes 30 gallon drum

SPECIFICATIONS

	PW26	DM32
Inside Tub Dimensions	26" L x 17" W x 7" D	32" L x 22" W x 10" D
Sill Height	34"	39-1/2"
Solvent Capacity	9 Gallons	15 Gallons
Water Capacity	5 Gallons	10 Gallons
Pump Capacity	170 GPH	300 GPH
Electrical Requirements	120V/1PH/60Hz/.6A	120V/1PH/60Hz/1.7A



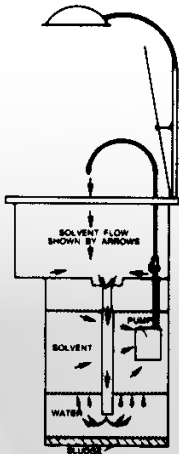
Base Mounted Deluxe Parts Washer
Catalog No. STD32 & SUP48

STANDARD FEATURES

- Fusible linked fire cover for safety
- Constructed of 13 gauge steel
- Rectangular 30 gallon base tank reservoir for working stability
- Flow regulating valve
- Deluxe worklamp assembly
- Tub is pin hinged to base for easy maintenance
- Patented water filtration system

SPECIFICATIONS

	STD32	SUP48
Inside Tub Dimensions	32" L x 22" W x 10" D	48" L x 22" W x 10" D
Sill Height	38-1/2"	38-1/2"
Solvent Capacity	20 Gallons	20 Gallons
Water Capacity	10 Gallons	10 Gallons
Pump Capacity	300 GPH	300 GPH
Electrical Requirements	120V/1PH/60Hz/1.7A	120V/1PH/60Hz/1.7A



Patented Water Filtration System

OPTIONAL ACCESSORIES

	(PW26)	(DM32)	(STD32)	(SUP48)
Deluxe Worklamp Assembly	A3210N	A3210N	Included	Included
Flow Regulating Valve	A2621S	A3216	Included	Included
Flow Thru Brush Assembly (includes nylon cleaning brush, hose & necessary fittings)	A2636N	A3236SN	A3236SN	A3236LN



Deluxe Work Lamp



Flow Regulating Valve



Flow Thru Brush Assembly



ORDER ONLINE: TheCarlsonCompany.com

OR CALL: 800-222-6199



SOLVENT FREE PARTS CLEANERS (AQUEOUS BASED)

Designed for use with aqueous based cleaning agents!

Catalog No. SSWH1630SSHS

SOLVENT FREE SPRAY CABINETS

Designed for use with aqueous based detergents



Catalog No. TLSC30

SPECIFICATIONS	SSWH1630SSHS
Inside Tub Dimensions	32"L x 20"W x 8"D
Sill Height	35"/37-1/2" *
Solution Capacity	14/25 gallons *
Tub Construction	16 gauge 304 Stainless Steel
Pump Capacity	300 GPH
Heating System	Optional
Electrical Requirements	120V/1PH/60Hz/.6A

*Based upon mounting on either 16 or 30 Gallon Drum

- ### FEATURES
- Fusible linked gas spring assisted fire Cover for Safety
 - Hinged tub allowing easy access to base reservoir tank
 - Loc-Line style acetal flex nozzle
 - Flow-thru cleaning brush assembly
 - Flow regulating valve to direct solvent flow
 - Stainless steel crumb cup with stainless steel filter strainer
 - Built-in fluorescent light fixture (SSWH1630SSHS only)
 - Dual mounting rings fit either 16 or 30 gallon drum – Drum not included

AIR POWERED IMMERSION CLEANERS

Designed for use with compatible solvents or carburetor cleaners



Hanging basket, where parts are placed for cleaning

AUTOMATIC PARTS WASHER 6-GALLON PAIL

Catalog No. AK-6

AUTOMATIC PARTS WASHER 16-GALLON DRUM

Catalog No. AK-16

- ### STANDARD FEATURES
- 12GA Cold rolled steel construction for durability
 - Door limit switch
 - All control voltage stepped down to 120VAC
 - Neon pilot lights indicating heat and spray
 - Heating system includes 60-250° thermostat
 - Friction driven turntable
 - Heavy duty casters and steel mesh parts basket

OPTIONAL EQUIPMENT	
• Low Water Shut Off (recommended)	
• Belt Type Oil Skimmer (recommended)	
• 7 Day 2 Channel Programmable Timer (recommended)	
• 7-Day Programmable Timer	
• External Strip Heaters with Insulation on Lower Tank	
• Canister Type Filtration	
• 100 Amp Fused Main Disconnect	

SPECIFICATIONS	TLSC30
Overall Dimensions (lid open)	40"L x 48"W x 83"H
Inside Working Height	30"
Turntable Diameter	30"
Solution Capacity	40-60 gallons
Workload Capacity	500 pounds
Pump Capacity	2 HP
Pump Output	40PSI @ 40 GPM
Heating System	4.5 Kilowatts
Electrical Requirements	230V/1PH/60Gz/40A

- ### FEATURES (AK6, AK16)
- Special hanger bracket with convenient basket hook
 - Durable steel reservoir drum with cover locking band
 - Heavy-Duty air motor rotates basket in both directions
 - Rugged metal spun basket has 1/8" diameter holes for containing extra Small Parts and a convenient hook for draining from top of drum

SPECIFICATIONS	AK6	AK16
Basket Dimensions	10" Diameter	12" Diameter
Reservoir Size	6 Gallons	16 Gallons
Workload Capacity	30 Pounds	30 Pounds
Air Pressure Range	20-90 PSI	20-90 PSI



SPECIALTY MOTORS PERSONAL WATERCRAFT TEST TANK, HOIST & DOLLIES

Experience Pays Off!

PWC TEST TANK

Catalog No. PWC-TT-H



NEW Adjustable Width
PWC Support Bunks

Built by Specialty Motors, this test tank has been designed and manufactured to meet all of your needs. Since 1952, Specialty Motors has been building quality test tanks geared for the Marine Industry. Similar to the models developed for "Outboard Engine" testing this PWC Test Tank was developed as an "easy to use" solution for personal watercraft testing needs. The tank is uniquely designed to submerge only the pump and a small portion of the hull. The majority of the hull stays clean and dry during testing. The bunks and tie-down points hold the personal watercraft securely to avoid jumping and bucking experienced by standard test tanks. The attached Hoist (included with Catalog No. PWC-TT-H) will lift the PWC from its trailer and rotate it around into the test tank with ease. The Hoist also serves as an easy way to lift any PWC for inspection or service.

How to lift a personal watercraft with just one hand!



The PWC Hoist Workstation is designed to lift personal watercraft in any environment with only one person. Whether you are lifting a PWC off your customer's trailer or from a PWC dolly, you can count on this Hoist/Workstation. This versatile piece of equipment lifts the PWC to a workable height and tilts the watercraft for easy engine compartment access and other servicing needs. This Hoist/Workstation takes the back pain out of PWC servicing!

Lifts up to 1000 Lbs.

PWC HOIST WORKSTATION

Catalog No. PWC-H-WS

OPTIONAL EQUIPMENT

Catalog No. Description

PWC-FLK	Fork Lift Kit: Allows easy movement of PWC with any fork lift
BTT-MINI	PWC Boatoter: Designed to work as a cradle rest for PWC
WLY-MINI	WEELEE DEELEE: Wheels make PWC Hoist, & Boatoter portable



ORDER ONLINE: TheCarlsonCompany.com

OR CALL: 800-222-6199

SHURE ULTRA CUSTOM & REALITI WORKCENTERS

Custom Colors Available
No Charge!

Made in the
U.S.A.

Designed from the ground up for the ultimate in versatility and durability. The Ultra Custom Workcenter meets the needs of the most demanding service departments. Affordable and built to last, these workcenters provide technicians with a rugged stainless steel work surface and plenty of storage for maintaining an efficient work environment.



ULTRA CUSTOM WORKCENTER

Catalog No. 8110061

FEATURES

- Custom workbench stainless steel top 60" x 24"
- Stainless steel tool board 48" x 25"
- Storage cabinet 48" (includes lock)
- Sliding doors (2)
- LED Task Light
- 1,000 lb. Capacity
- Color as shown: gloss black w/orange accents

OPTIONS

- Custom Color Choices Available (no add'l charge)
- 2 Drawers & 2 Sliding Doors
- Open (no drawers or doors)
- Portable (with casters)
- Steel Bench Top, Powder Coat Finish
- Hardwood Bench Top
- Vinyl Mat 60" x 24"
- Heavy-Duty Rubber Mat 60" x 24" x 1/4"
- Locks for Drawers & Doors
- Bench Vise

REALITI WORKBENCH

Catalog No.
800086



Shure Realiti Workbenches and Workcenters are built to last!

The Realiti line of workbenches is second to none when it comes to quality, design and image enhancement. The Realiti Workcenter comes standard with a stainless steel work surface and toolboard, lockable upper cabinets, task light, and fully enclosed lockable lower cabinets and drawers. Built for durability and performance, these benches are the best investment you can make for the appearance and productivity of your service area.

FEATURES

- Stainless steel bench top 60" x 24"
- Stainless steel toolboard
- Flip front upper storage cabinet (workcenter only)
- LED Task Light
- 2 Drawer/4 door combination with ball bearing drawer slides
- Full body steel construction, powder coat finish
- Large storage capacity with easy access
- 1,000 lb. Capacity

OPTIONS

- Vinyl Mat 60" x 24"
- Heavy-Duty Rubber Mat 60" x 24" x 1/4"
- Locks for 2 Drawers and 4 Doors
- Bench Vise

Call for additional brochures detailing the
entire line of Shure Manufacturing products.



ORDER
ONLINE: TheCarlsonCompany.com

OR CALL: 800-222-6199

WORKBENCHES

SHURE CUSTOM SERIES WORKBENCHES

The Custom Series Workbenches have a stylish appearance coupled with strength and utility. The versatile Custom Series offers a variety of options and accessories that allow the service technician to create a workstation that meets specific requirements. Organize your shop with the bench that works best for you.

FEATURES

- Durable 12-gauge steel tops & 14-gauge steel bodies
- Choose from three tops to fit your individual requirements
- Three base configurations provide the ability to make the bench of your choice
- Available as a portable, stationary or wall-mounted bench
- Powder coat finish paint protects against rusting, chipping & peeling
- Large work surface & under bench storage
- 1000 lb. Capacity

OPTIONS

Three Different Tops: stainless steel, steel (powder coat paint), & hardwood maple

Three Different Configurations: Open, doors only, doors & drawers

Three Different Styles: Portable, wall-mounted & stationary

Vinyl Mat 60" x 24"

Heavy-Duty Rubber Mat 60" x 14" x 1/4"

Bench Vise

Custom Colors Available
No Charge!

Made in the
U.S.A.



CUSTOM SERIES PORTABLE BENCH
Catalog No. 811013



5" HEAVY-DUTY BENCH VISE
Catalog No. 900650



CUSTOM SERIES WORKBENCHES

Catalog No. 811017 & 811004

Call for additional brochures detailing the entire line of Shure Manufacturing products



ORDER ONLINE: TheCarlsonCompany.com

OR CALL: 800-222-6199

SHURESHOP WORKBENCHES & CARTS



DELUXE WORKBENCH

Catalog No. 811046
(Shown in Cardinal Red)

*BENCH ADD-ON DRAWERS

Inside drawer dimensions are 20" wide by 20" deep by 6" high. Can be mounted under the benchtop of Basic Workbench for extra storage - either stacked in vertical tiers or side-by-side (two drawers fit side-by-side under 60" benchtop; three drawers can be used under 72" top).



TECHNICIAN CART

Catalog No. 800019

Technician Carts are available in the color of your choice and come portable as shown. (shown in Monaco Blue)

OPTION 420020 Additional Shelf

Shureshop Workbenches offer a variety of styles and sizes to fit your shop needs. The Shureshop Benches are made in the U.S.A of heavy-gauge steel construction for strength and durability. Designed to work under rugged shop environments, these benches are a step above the competition. The powder coat finish paint extends the bench life and resists rusting, chipping and peeling. Benches can be configured in a number of different ways - customize these benches to work best in your shop. Available in four different styles: Portable, Stationary, Semi-Portable and Wall-Mounted.

FEATURES

- Durable 12-gauge steel construction
- Powder coat finish paint
- Three bench top choices: Steel, Hardwood Maple, & Stainless Steel
- Choose from several bench sizes 48", 60", 72" (phone for details)
- Add an optional drawer or stack several drawers*

OPTIONS

Bench Tops: Steel (powder coat paint), Hardwood Maple, Stainless Steel

Accessory Kit (back stop, left & right end stops, lower shelf 12"d)

Drawers*

Toolboard

Vinyl Mats

Heavy-Duty Rubber Mats

Pressed Wood Covers

Bench Riser Kits

Caster Wheels for Portability

Bench Vise

Shure 22 Signature Colors

Custom Colors Available
No Charge!

Electric Blue 2004036 RAL 3002	Monaco Blue 2004276 RAL 5010	St. Louis Blue 2004156 RAL 3003	Cardinal Red 2003856 RAL 3000	Carmine Red 2004616 RAL 3002	Panama Red 2003976 RAL 3020	Tabasco Red 2004206 RAL 2002	Harley Orange 2004006-49 / 24530 RAL 2004
Hunter Green 2004376 RAL 6005	Gloss Black 2004346 RAL 9005	Tire Black 2003786 RAL N/A	Charcoal Gray 2004286 RAL 7016	Slate Gray 2003576 RAL 7012	Pewter Gray 2004126 RAL 7030	Silk Gray 2004626 RAL 7044	Selving Gray 2004066 RAL 7040
Standard Silver 2004636 RAL N/A	Silver Mirror* 2004586 RAL N/A	Arctic White 2003916 RAL 9010	Ice White 2004416 RAL 9003	Sahara Gold* 2004596 RAL N/A	Safety Yellow 2004526 RAL N/A	*Not Available As The PRIMARY COLOR	

Call for additional brochures detailing the entire line of Shure Manufacturing products



ORDER ONLINE: TheCarlsonCompany.com

OR CALL: 800-222-6199

SHURE TEAR-DOWN BENCHES

The Shure Tear-Down Bench features a reinforced top with 1/2" lip on all sides and is strong enough to accept parts-holding devices. The offset drain allows fluid to be contained in a removable container for easy disposal and cleanup. Locking drawer secures regularly used tools and materials.



Custom Colors Available
No Charge!

SHURE TEAR-DOWN BENCH
Catalog No. 800023

FEATURES & OPTIONS

- Heavy-gauge steel construction
- Convenient size: 48" w x 32" d x 41" h (adjustable height)
- Powder coat finish paint for added durability
- Horizontal leg braces for added strength
- Portable - two rigid and two swivel casters
- Adjustable height
- 1000 lb. Capacity
- Optional lock for drawer
- Vinyl mat 32" x 48"

Also Available

Catalog No. 811098 Oversized Tear-Down Bench w/parts tray & toolboard 60" w x 32" d (adjustable height)

Catalog No. 811100 Fluid Containment Bench (Stainless Steel Top) 48" x 29" x 41" high

HANDY DELUXE TEAR-DOWN TABLES

From the same manufacturer as the world renowned Handy Portable Air Lift is the ever popular Handy Tear-Down Tables. These Tear-Down Tables are designed to save you time and money.

The Deluxe Tear-Down Table steel workbench is great for your service department or your garage. The 14 gauge top has a 3/4" rim to contain liquids and capture leaking fluids when working on hydraulic systems and transmissions. Fluids drain into the removable polyethylene drawer for easy dispensing. The convenient adjustable lower shelf organizes your tool storage. The drawer features a cylinder key locking system with full-extension ball bearing sliders to keep your valuables safe. Tough powder-coat finish resists rust, chips, and scratches.

As with all Handy products, the Deluxe Tear-Down Table is proudly made in the USA.



HANDY DELUXE TEAR-DOWN TABLE
Catalog No. 11505R (Red / Black legs)



Catalog No. 11505O (Orange / Black legs)

FEATURES

- Adjustable working height of 37" to 41"
- Heavy duty 4" casters (2 rigid & 2 locking swivel)
- 14 gauge 48" x 28" table top with 3/4" rim
- Removable 20" x 12" x 6" polyethylene drawer
- Adjustable lower shelf
- Heavy duty 24" x 18" x 5-1/2" locked drawer



DOING BUSINESS WITH THE CARLSON COMPANY

TERMS AND CONDITIONS

BUSINESS HOURS:

Monday – Friday 8:30 a.m. – 4:30 p.m. (Pacific Time)

HOW TO ORDER:

Order by phone, call 1-800-222-6199. Order online, sales and customer service representatives are available 8:30 a.m. – 4:30 p.m. PDT Monday through Friday.

PAYMENT OPTIONS:

Company Check

Credit Card (Visa, MasterCard or Discover Card)

Bank Wire Transfer

Net 15 on approved credit

Leasing - Lease to Own (\$3,000.00 min., 2 years in business, approximately 48 hours for approval)



SHIPPING:

Orders are shipped customer prepaid, or freight added, F.O.B. shipping point(s) - see price list. Normally, equipment is shipped via common carrier truck, and smaller items via UPS. Method of shipment is at the shipper's discretion, however, every effort will be made to accommodate any special shipping preferences you may have.

DELIVERY:

Estimated delivery times can be obtained at time of purchase from our customer service representatives. Unloading of equipment is your responsibility. You should ensure that a fork lift or equivalent is available at time of delivery. Any re-delivery charges are the responsibility of the purchaser. Inspecting your shipment(s) for damages is the responsibility of the purchaser.

WARRANTY:

Products sold by The Carlson Company are warranted by the manufacturers to be free from defects in material and workmanship. Adjustments under these warranties are limited to the repair or replacement of parts found to be defective, and do not include parts installation or transportation charges. Damage arising from misuse, abuse or alteration is not covered by warranty.

FREIGHT DAMAGE CLAIMS:

All goods are carefully packed and are in good condition when shipped to our customers. According to the F.T.C., title to merchandise passes to customer when shipper turns it over to the common carrier and/or receiver. Any loss or damage in transit is the sole responsibility of the carrier. AT THE TIME OF DELIVERY INSPECT ALL SHIPMENTS IMMEDIATELY FOR POSSIBLE DAMAGE OR SHORTAGE. If external damage is apparent, or hidden internal damage is suspected, you should sign the freight bill "freight damaged" or "subject to claim". Any claim for damage or shortage should be made with the carrier at once. We are more than willing to assist you in your claim, however, we are not responsible for collection of claims or replacement of goods.

NOTICE TO PURCHASER:

The following is made in lieu of all warranties, expressed or implied. User shall determine the suitability of the product for his intended use and user assumes all risk and liability in connection therewith. Under no circumstances shall The Carlson Company be liable for any injury, damage or consequential loss related to any product we sell.

RETURNS:

No returns accepted without the expressed written authorization of either The Carlson Company or the manufacturer of the merchandise in question. Upon requesting and receiving such authorization, you may return any defective parts for repair or replacement (freight prepaid) to the shipping point or other location, as designated in the letter of authorization. Cancelled orders or refused shipments may be subject to factory restocking fee and/or additional freight charges.

PRICES:

Subject to change without notice. All prices are net to the dealer, F.O.B. shipping point(s).

TRADEMARK NAMES: such as Harley-Davidson®, Honda, Yamaha, Suzuki, Kawasaki, BMW etc. are used for reference only in this catalog and are the sole property of their respective parent companies.

MASTER INDEX

Air Compressors.....	32	Gas Caddies	16	Parts Washers, Solvent & Aqueous.....	34-35
Anti-fatigue Mats.....	28	Hones, Flexible.....	28	PWC Test Tands/Workstations	36
Battery Chargers.....	18-19	Honing Machines/Honing Tanks.....	25	Scan Tools	22-23
Battery Jump Starters	20	Honing Oil.....	28	Tear-Down Benches	40
Bead Blasters	30	Hydraulic Presses	31	Tire Bead Seaters	2
Boring Bars	24	Lift Accessories	5	Tire Changers, Motorized.....	2-3
Center Lift Jacks.....	5	Lifts, In-Ground.....	9	Ultrasonic Cleaning Systems.....	33
Dynamometers.....	10-13	Lifts, Portable, Above-Ground.....	4-8	Valve Seat Cutters/Kits	27
Dyno Test Rooms	14-15	Measuring Instruments	26	Valve Seat Cutters, Motorized.....	27
Flowbenches	29	Oil Dispensing Equipment.....	17	Waste Oil Evacuators	16
Gas Analyzers.....	21	Oil Extracting Equipment.....	16	Wheel Balancers, Computerized	3
				Workbenches/Workcenters	37-40



ORDER ONLINE: TheCarlsonCompany.com

OR CALL: 800-222-6199

