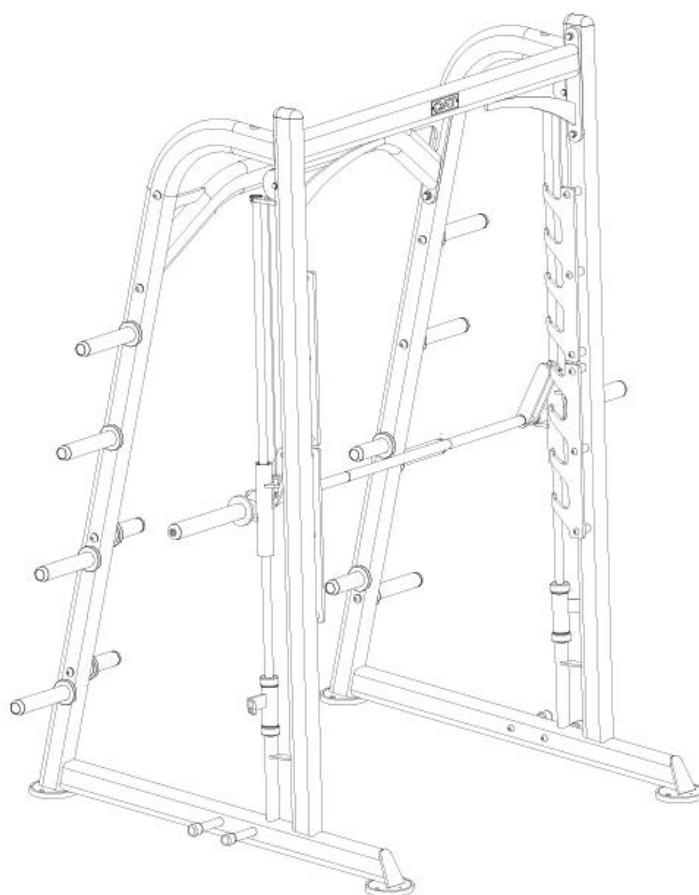


TAG FITNESS **YOU'RE
FIT!**

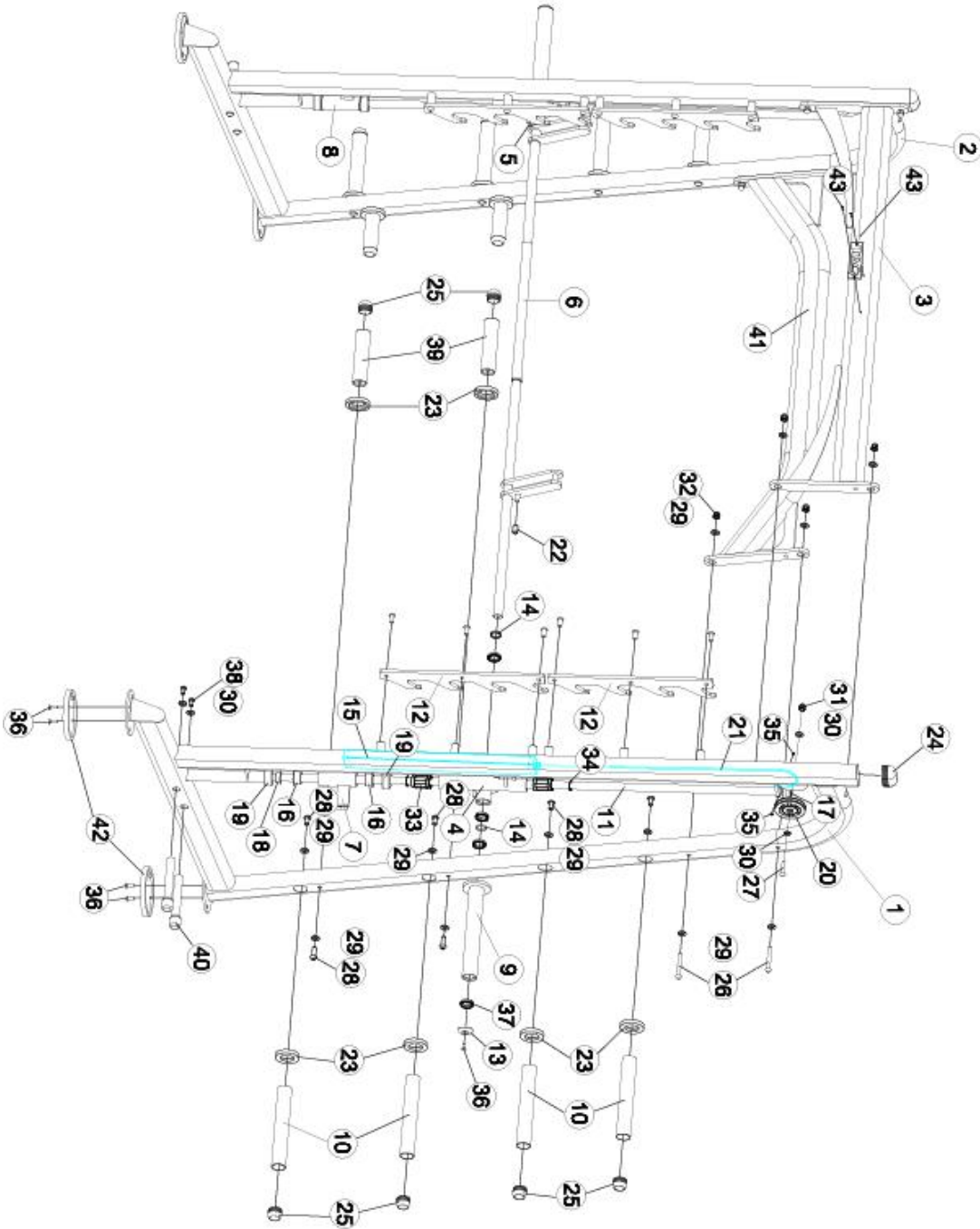
Smith Machine Model 872SM



www.tagfitness.net

Phone: 630-375-1500

EXPLODED DRAWING



PARTS LIST

Part No.	Description	Q'ty	Part No.	Description	Q'ty
1	Main Frame-L	1	24	End Cap PT50X100	2
2	Main Frame-R	1	25	Φ 45 End Cap	12
3	Top Cross Frame	2	26	Allen Bolt M12x75mm (3")	4
4	Sliding mechanism assembly – L				1
5	Sliding mechanism assembly – R				1
6	Barbell	1	27	Hex Bolt M10x50mm (2")	2
7	Safety Catch – L	1	28	Allen Bolt M12x25mm (1")	24
8	Safety Catch – R	1	29	Flat Washer for M12 bolt	24
9	Olympic Plate Adapter	2	30	Flat Washer for M10 bolt	8
10	Longer Plate Storage Bar	8	31	Lock Nut for M10 bolt	2
11	Guide Rod	2	32	Lock Nut for M12 bolt	8
12	Gun Rack	4	33	Linear Bearing SB25	4
13	Plate Adapter End Cap	2	34	Clip Φ 40	4
14	Washer	4	35	Allen Bolt M6x8mm	4
15	Counter Balance	2	36	Hex Sunk Screw M8x20	10
16	Bushing Φ 48-Φ 25	4	37	Bearing 61806ZZ	8
17	Bushing Φ 36-Φ 25	2	38	Hex Pan Bolt M10x15mm	4
18	Bushing Φ 38-Φ 25	2	39	Shorter Plate Storage Bar	4
19	Rubber Bumper	4	40	Stretch Cords Holder	4
20	Pulley Φ 95*24	2	41	Lower Cross Frame	1
21	Cable	2	42	Rubber Pedal	4
22	Rubber End Cap	1	43	Name Plate	1
23	Rubber Bumper	12	44	Rivet Φ 4*12	2

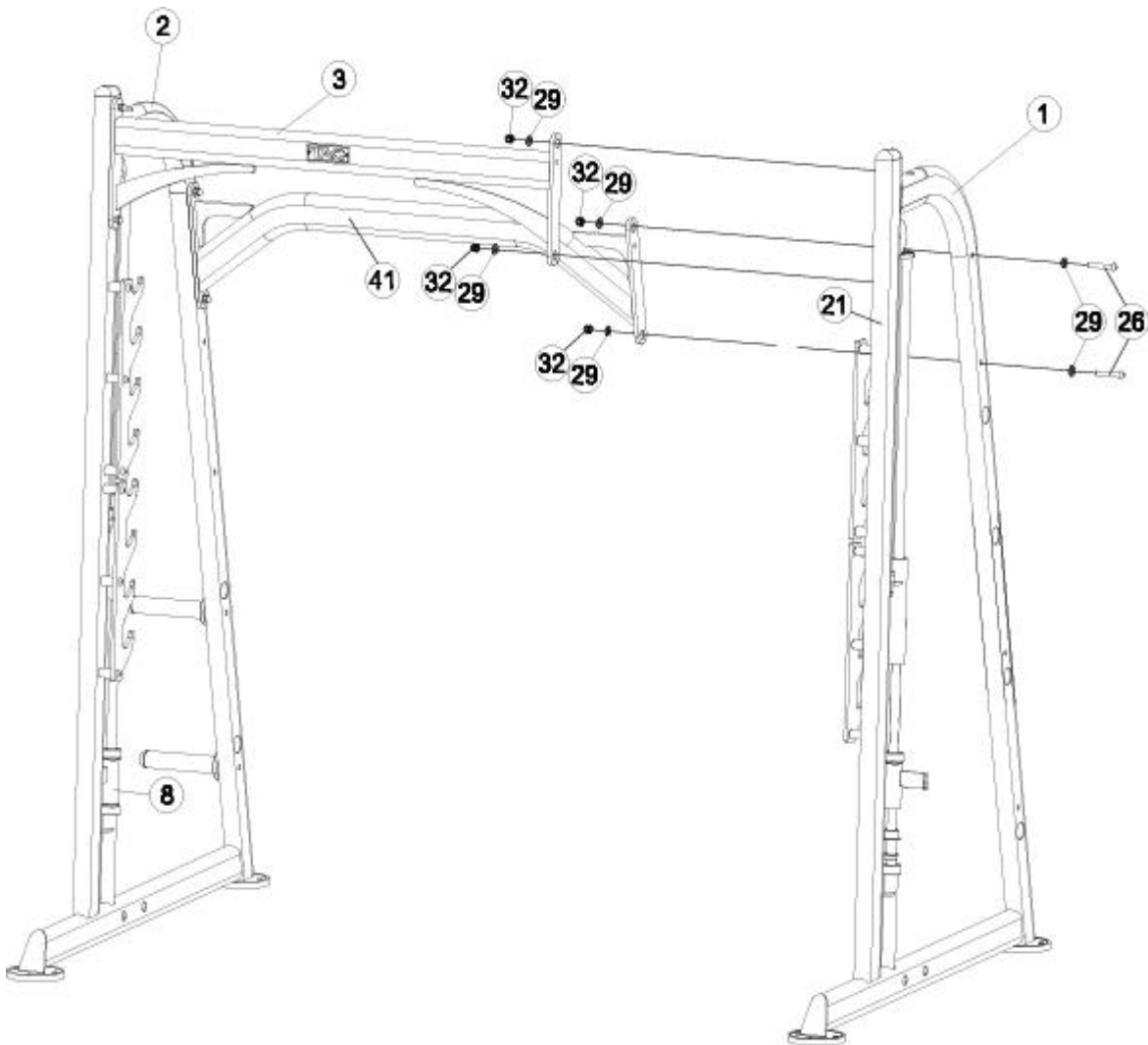
ASSEMBLY STEP

Note: Before starting assembly remove all parts and hardware from the carton, ensure you have everything according to the list.

Step 1

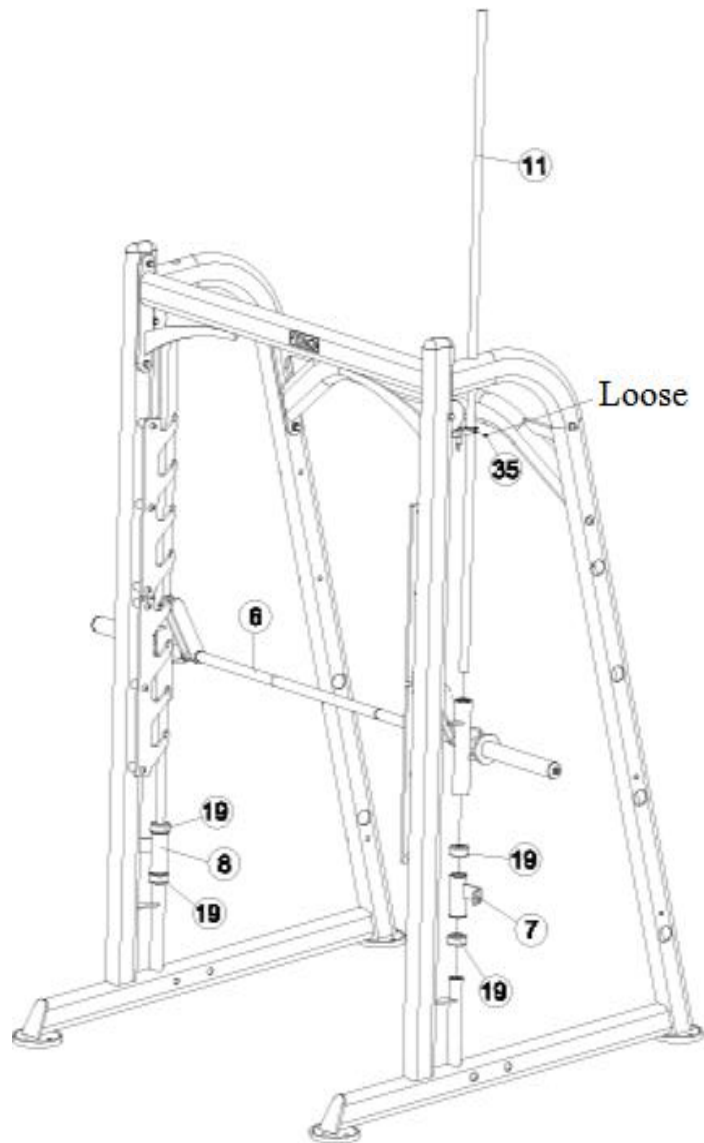
Please connect the Top Cross Frames (3) and Lower Cross Frame (41) to the Main Frames (1&2), using 4 Allen Bolts (26), 12 Flat Washers (29) and 8 Lock Nuts (32).

Note: Please tighten all the nuts and bolts with wrenches.



Step 2

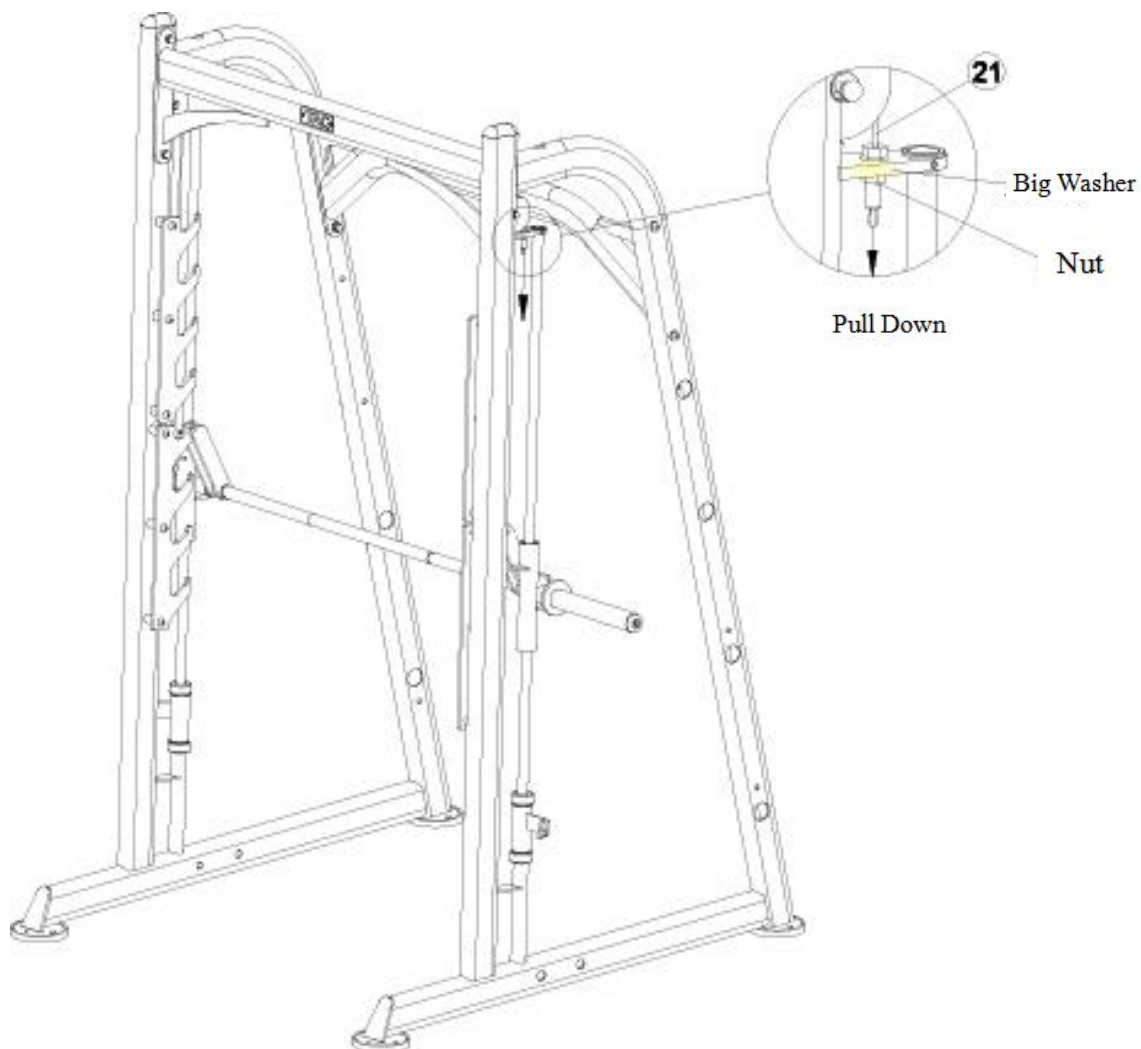
Please loosen 4 Allen Bolt (35) and pull up the Smith Guide Rod (11).
As the picture shows, please connect these parts using Guide Rod (11), then pull down the Guide Rod (11) and tighten the Allen Bolt (35).



Step 3

Please pull down Cable (21) and loose Nut for ready.

Remove the big washer from the Bolt, keeping the same for both sides.

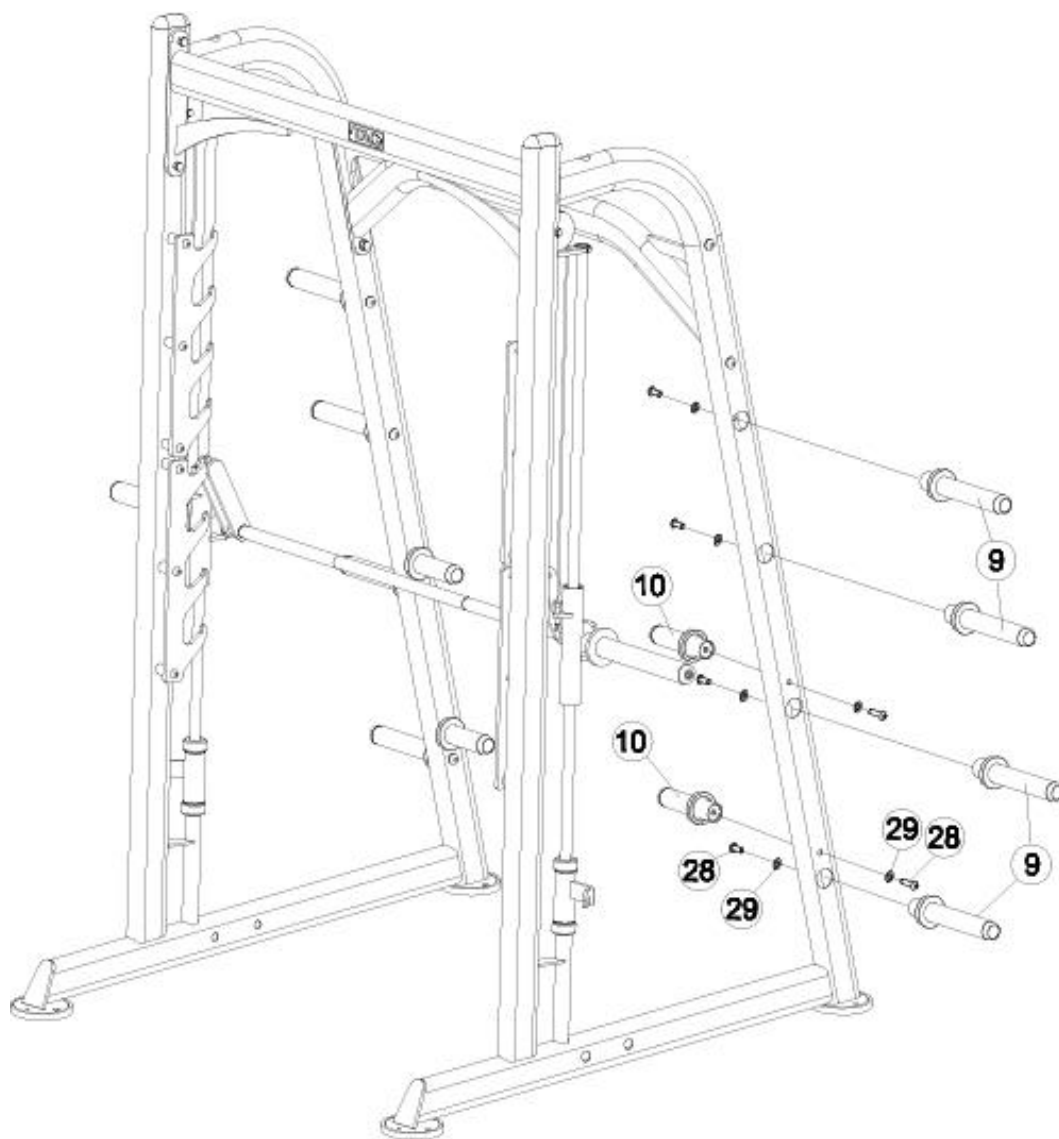


Step 4

Please As picture shows, please put all bolts on relevant holes and tighten nuts. Keep the same for both sides.



Step 5



Step 6

