

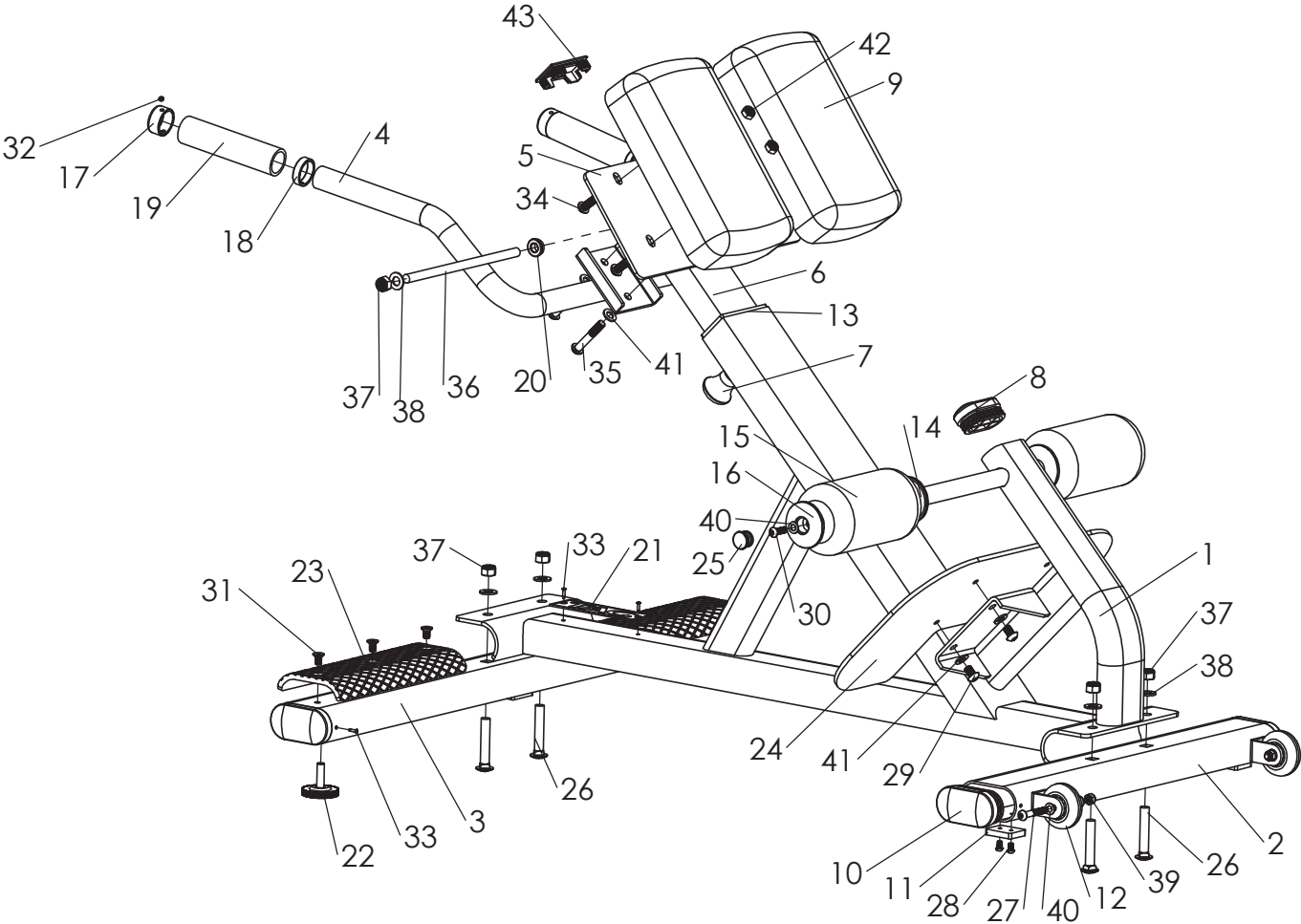


G8057HP HYPER EXTENSION
OWNER' S MANUAL & PARTS LIST

PARTS LIST

| PART NUMBER | DESCRIPTION | QUANTITIES |
|-------------|---------------------------|------------|
| 1 | Main Frame | 1 |
| 2 | Rear Stabilizer | 1 |
| 3 | Front Stabilizer | 1 |
| 4 | Handlebar | 1 |
| 5 | Thigh Pad Support Frame | 1 |
| 6 | Thigh Pad Adjustable Post | 1 |
| 7 | Knob | 1 |
| 8 | End Cap 40x80mm | 2 |
| 9 | Thigh Pad | 2 |
| 10 | End Cap 50x100mm | 4 |
| 11 | Rubber Cushion | 3 |
| 12 | Transport Wheel | 2 |
| 13 | Plastic Sleeve | 1 |
| 14 | Foam Inner Cap | 2 |
| 15 | Foam Roller | 2 |
| 16 | Foam Outer Cap | 2 |
| 17 | Metal End Cap | 2 |
| 18 | Metal Ring | 2 |
| 19 | Grip | 2 |
| 20 | Metal Bushing | 2 |
| 21 | Name Plate | 1 |
| 22 | Leveler | 2 |
| 23 | Foot Padding | 2 |
| 24 | Foot Plate | 1 |
| 25 | End Cap Dia.25mm | 2 |
| 26 | Carriage Bolt M12x70mm | 4 |
| 27 | Allen Bolt M8x50mm | 2 |
| 28 | Allen Bolt M5x10mm | 6 |
| 29 | Allen Bolt M10x10mm | 4 |
| 30 | Allen Bolt M8x25mm | 2 |
| 31 | Allen Bolt M8x15mm | 6 |
| 32 | Screw M6x4mm | 6 |
| 33 | Rivet 4 X12mm | 10 |
| 34 | Allen Bolt M10x25mm | 4 |
| 35 | Allen Bolt M10x60mm | 2 |
| 36 | Shaft 12x245mm | 1 |
| 37 | Nylon Nut M12 | 6 |
| 38 | Flat Washer M12 | 6 |
| 39 | Nylon Nut M8 | 2 |
| 40 | Flat Washer M8 | 6 |
| 41 | Flat Washer M10 | 12 |
| 42 | Nylon Nut M10 | 2 |
| 43 | End Cap J40x80mm | 1 |

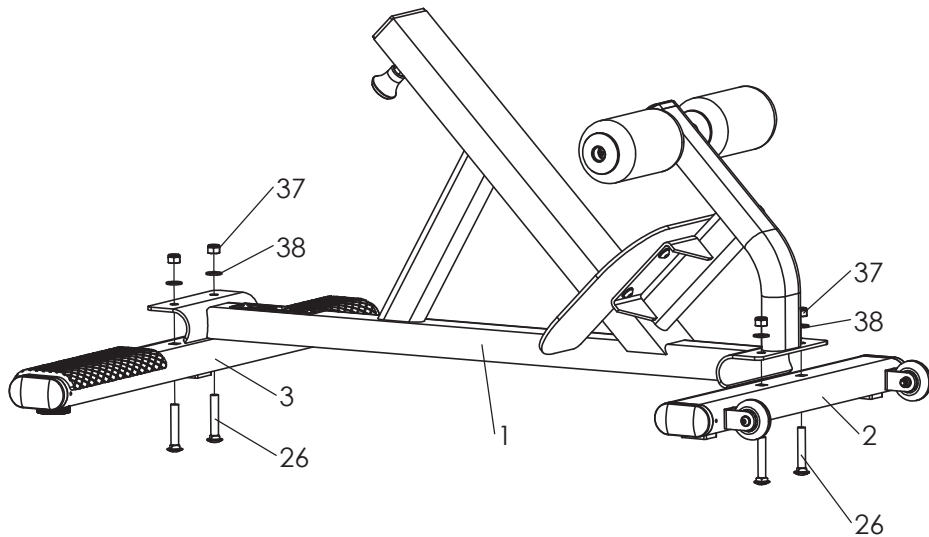
HYPER EXTENSION



ASSEMBLY

STEP 1

Please connect the Front and Rear Stabilizers [2&3] to the Main Frame [1], using 4 Carriage Bolts [26], 4 Flat Washers [38] and 4 Nylon Nuts [37].



STEP 2

Please insert the Thigh Pad Frame [6] into the Main Frame [1].
connect the Handlebar [4] to the Thigh Pad Frame [6], using 2 Allen Bolts [35], 2 Flat Washers [41] and 2 Nylon Nuts [42].

Please tighten all the bolts and nuts.

