

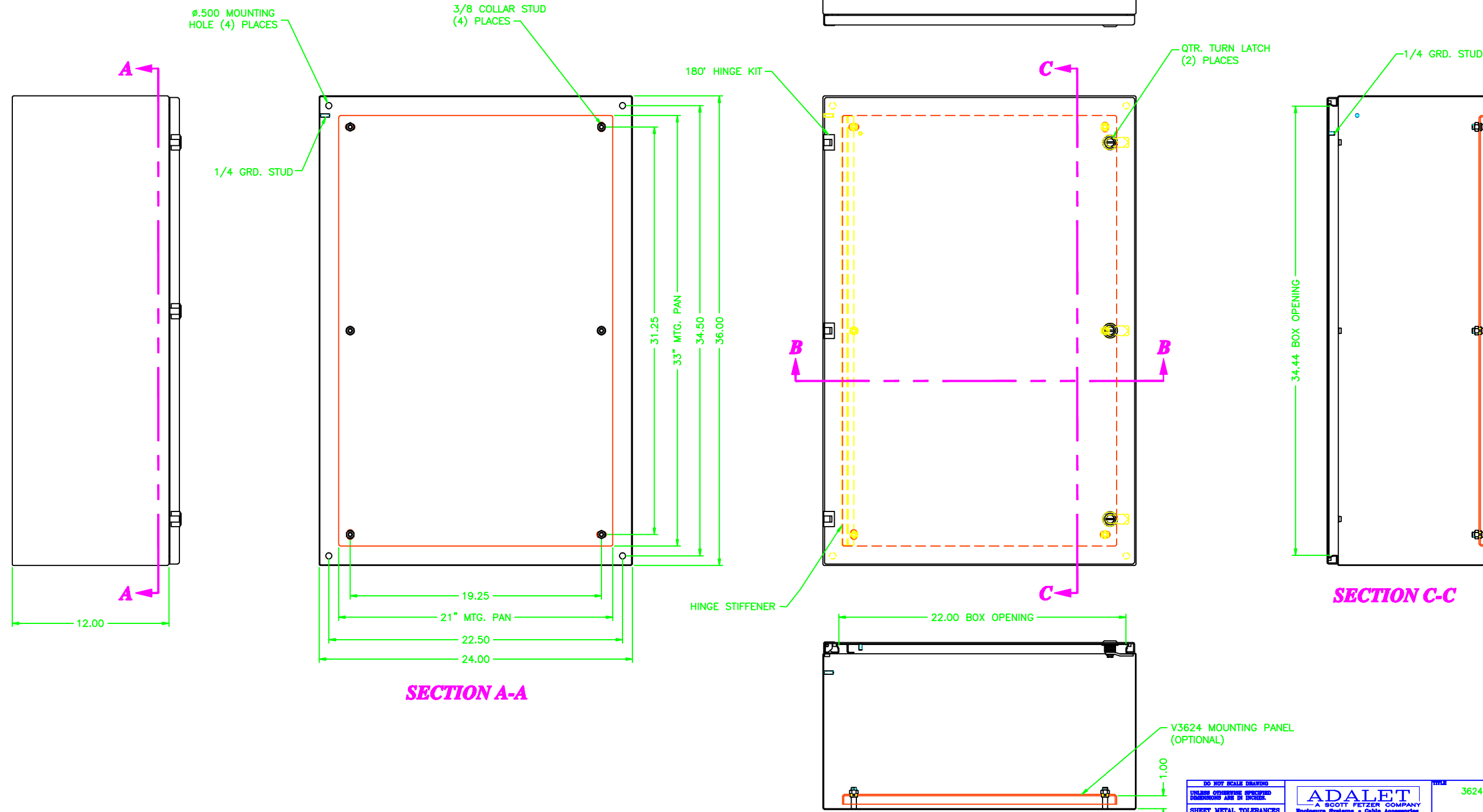
# UNCONTROLLED DRAWING

(DATA SUBJECT TO CHANGE WITHOUT NOTICE)

FOR ADDITIONAL HELP CONTACT ENGINEERING@ADALET.com

362412

REV	REVISION	BY	BCN	DATE
A	INITIAL RELEASE	CLB		6/3/03



ENCLOSURE MATERIAL	CATALOG NUMBER	PART NUMBER
SS316L	AVSS6-362412	M10084
SS304	AVSS-362412	M10030

## SECTION B-B

## SECTION C-C

<p>DO NOT SCALE DRAWING</p> <p>UNLESS OTHERWISE SPECIFIED DIMENSIONS ARE IN INCHES.</p> <p>SHEET METAL TOLERANCES NOT OTHERWISE SPECIFIED:</p> <p>FINISH: 316L                  JXX ± .02"                  JXX ± .010"                  ANGLES ± 0°-30"                  INSIDE BEND RADIUS = .040" NOM.                  WARPAGE = 1/16" PER FOOT                  ALL WELD SIZES ARE MIN.</p>		<p><b>ADALET</b>                  A SCOTT FETZER COMPANY                  Enclosure Systems • Cable Accessories</p>		<p>362412 VICTORY ENCLOSURE ASSEMBLY</p>	
<p>NOTICE TO PERSONS RECEIVING THIS DRAWING: ADALET CLAIMS PROPRIETARY RIGHTS IN THE MATERIALS INCLOSED HEREIN. THIS DRAWING IS ISSUED IN CONFIDENCE FOR ENGINEERING INFORMATION ONLY AND MAY NOT BE REPRODUCED OR USED TO MANUFACTURE, WITHOUT EXPRESS WRITTEN PERMISSION FROM ADALET TO THE USER.</p>		<p>DATE: 6/3/03</p> <p>DRAWN BY: CLB</p> <p>REV APPR: [Signature]</p> <p>DATE: [Signature]</p> <p>REV: [Signature]</p>		<p>SCALE: 1=4</p> <p>REV: D</p>	
<p>DATE: 6/3/03</p> <p>DATE: 6/3/03</p>		<p>DATE: 6/3/03</p> <p>DATE: 6/3/03</p>		<p>DATE: 6/3/03</p> <p>DATE: 6/3/03</p>	
<p>DATE: 6/3/03</p> <p>DATE: 6/3/03</p>		<p>DATE: 6/3/03</p> <p>DATE: 6/3/03</p>		<p>DATE: 6/3/03</p> <p>DATE: 6/3/03</p>	