

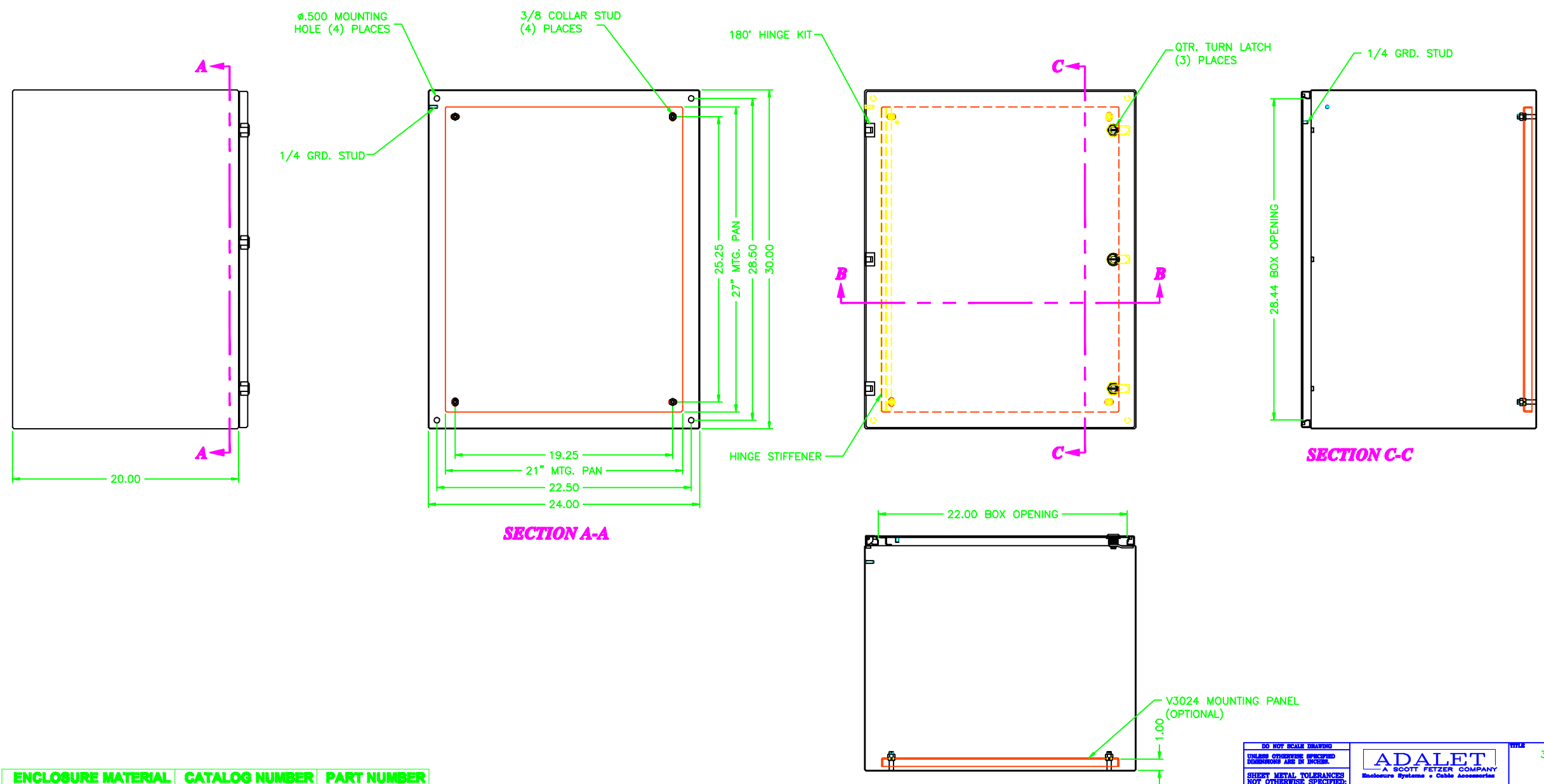
302420

REV	REVISION	BY	DCN	DATE
A	INITIAL RELEASE	CLB		6/3/03

UNCONTROLLED DRAWING

(DATA SUBJECT TO CHANGE WITHOUT NOTICE)

FOR ADDITIONAL HELP CONTACT ENGINEERING@ADALET.com



ENCLOSURE MATERIAL	CATALOG NUMBER	PART NUMBER
SS316L	AVSS-302420	M10097
SS304	AVSS-302420	M10043

<p>DO NOT SCALE DRAWING</p> <p>UNLESS OTHERWISE SPECIFIED DIMENSIONS ARE IN INCHES.</p> <p>SHEET METAL TOLERANCES NOT OTHERWISE SPECIFIED:</p> <p>FINC ±1/16"</p> <p>JXX ±.03"</p> <p>JXX ±.010"</p> <p>ANGLES ± 0°-30"</p> <p>INSIDE BEND RADIUS = .040" NOM.</p> <p>WARPAGE = 1/16" PER FOOT</p> <p>ALL WELD SIZES ARE MIN.</p>		<p>ADALET</p> <p>A SCOTT FETZER COMPANY</p> <p>Enclosure Systems • Cable Accessories</p>		<p>302420 VICTORY ENCLOSURE ASSEMBLY</p>	
<p>NOTICE TO PERSONS RECEIVING THIS DRAWING: ADALET CLAIMS PROPRIETARY RIGHTS IN THE MATERIALS, METHODS, AND EQUIPMENT USED IN THE DESIGN AND CONSTRUCTION OF THIS DRAWING. THIS DRAWING IS NOT TO BE REPRODUCED OR USED IN ANY MANNER WITHOUT THE WRITTEN PERMISSION FROM ADALET IS THE USER.</p>		<p>DRAWN BY: CLB</p> <p>DATE: 6/3/03</p> <p>APP. APPROVAL: [Signature]</p> <p>SCALE: 1=5</p> <p>REV. APPROVAL: [Signature]</p> <p>REV. DATE: D</p>		<p>DWG NO: 302420</p> <p>SHEET: 10F1</p> <p>REV: A</p>	

SECTION B-B

SECTION A-A

SECTION C-C