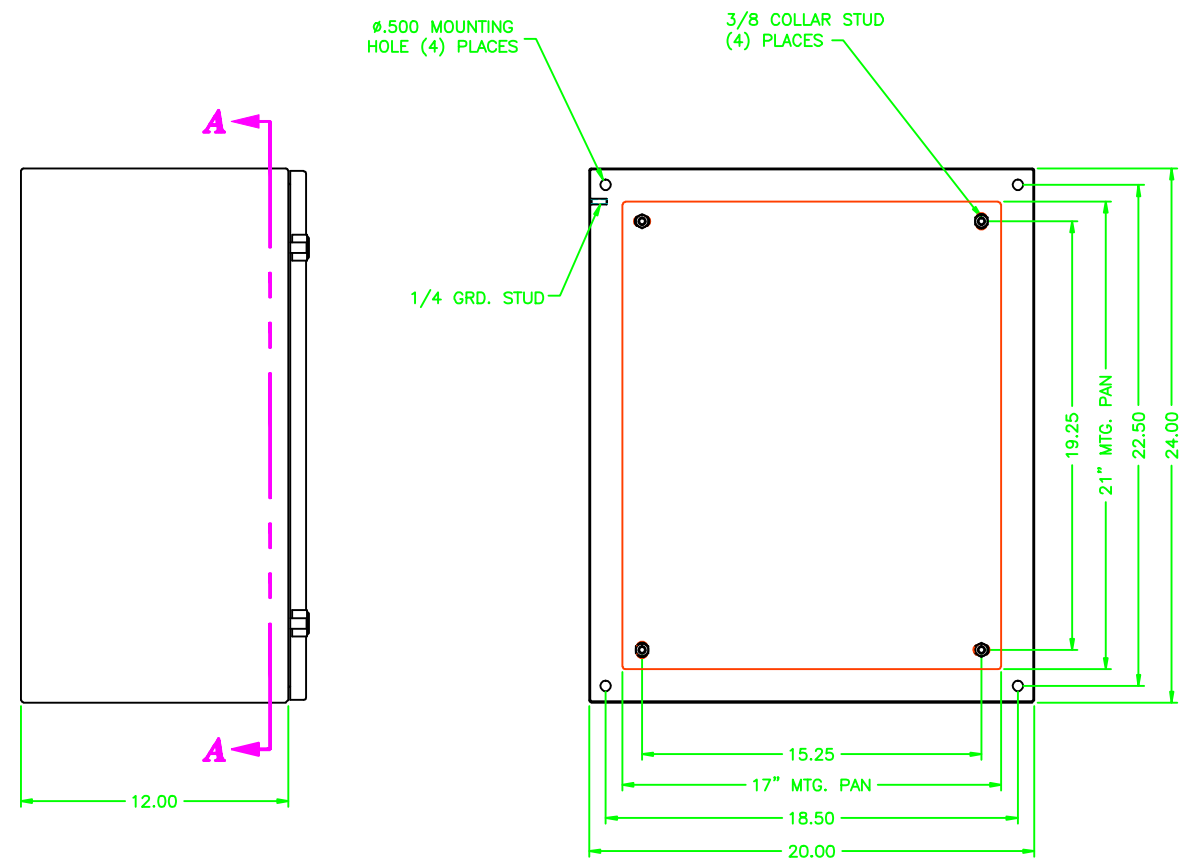
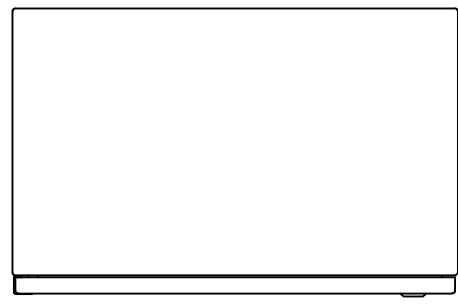


REV	REVISION	BY	DCN	DATE
A	INITIAL RELEASE	CLB		6/3/03

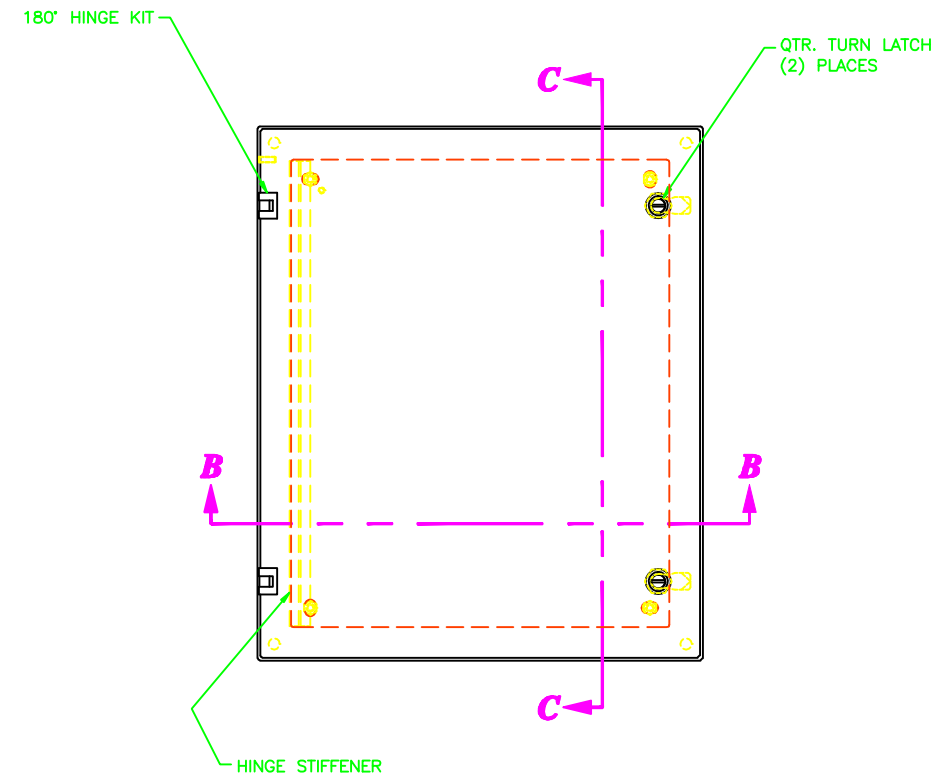
242012

UNCONTROLLED DRAWING

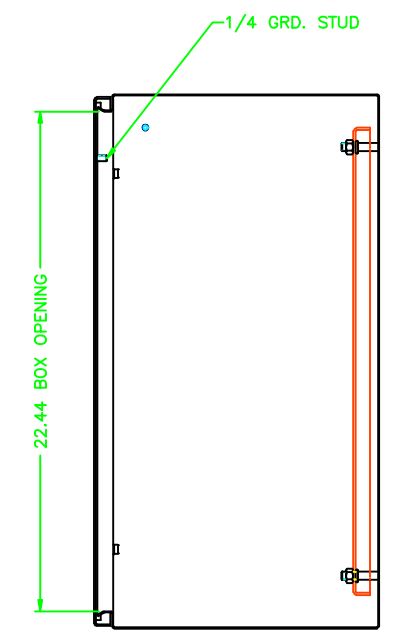
(DATA SUBJECT TO CHANGE WITHOUT NOTICE)
 FOR ADDITIONAL HELP CONTACT ENGINEERING@ADALET.com



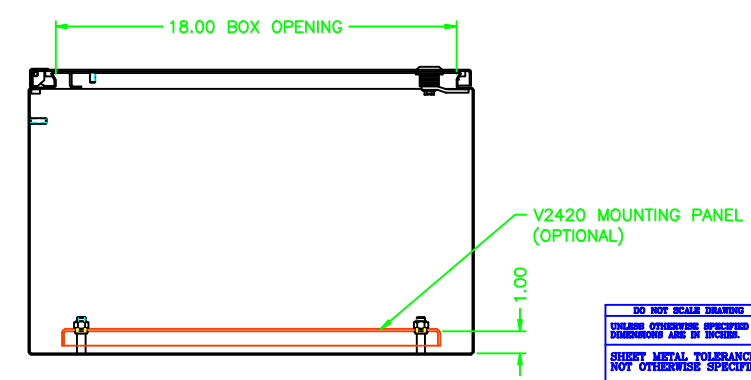
SECTION A-A



SECTION B-B



SECTION C-C



ENCLOSURE MATERIAL	CATALOG NUMBER	PART NUMBER
SS316L	AVSS6-242012	M10080
SS304	AVSS-242012	M10026

<p>DO NOT SCALE DRAWING</p> <p>UNLESS OTHERWISE SPECIFIED DIMENSIONS ARE IN INCHES.</p> <p>SHEET METAL TOLERANCES NOT OTHERWISE SPECIFIED:</p> <p>FINC ±1/16"</p> <p>XXX ±.03"</p> <p>XXX ±.010"</p> <p>ANGLES ± 0°-30"</p> <p>INSIDE BEND RADIUS = .040" NOM.</p> <p>WARPAGE = 1/16" PER FOOT</p> <p>ALL WELD SIZES ARE MIN.</p>		<p>ADALET</p> <p>A SCOTT PETER COMPANY</p> <p>Enclosure Systems • Cable Accessories</p>		<p>242012 VICTORY ENCLOSURE ASSEMBLY</p>	
<p>NOTICE TO PERSONS RECEIVING THIS DRAWING: UNLESS OTHERWISE SPECIFIED, THE DRAWING IS ISSUED IN CONFORMANCE WITH THE AMERICAN NATIONAL STANDARD FOR ENGINEERING DRAWINGS AND MAY NOT BE REPRODUCED OR USED TO MANUFACTURE WITHOUT WRITTEN PERMISSION FROM ADALET, INC.</p>		<p>ADAPLET CLAIMS PROPRIETARY RIGHTS IN THE MATERIAL INCLOSED HEREIN. THE DRAWING IS ISSUED IN CONFORMANCE WITH THE AMERICAN NATIONAL STANDARD FOR ENGINEERING DRAWINGS AND MAY NOT BE REPRODUCED OR USED TO MANUFACTURE WITHOUT WRITTEN PERMISSION FROM ADALET, INC.</p>		<p>DRAWN BY: CLB</p> <p>DATE: 6/3/03</p> <p>REVISED BY: [blank]</p> <p>REVISED DATE: [blank]</p> <p>DWG NO: 242012</p> <p>SHEET: 10F1</p> <p>REV: A</p>	