

## LOOK ONCE

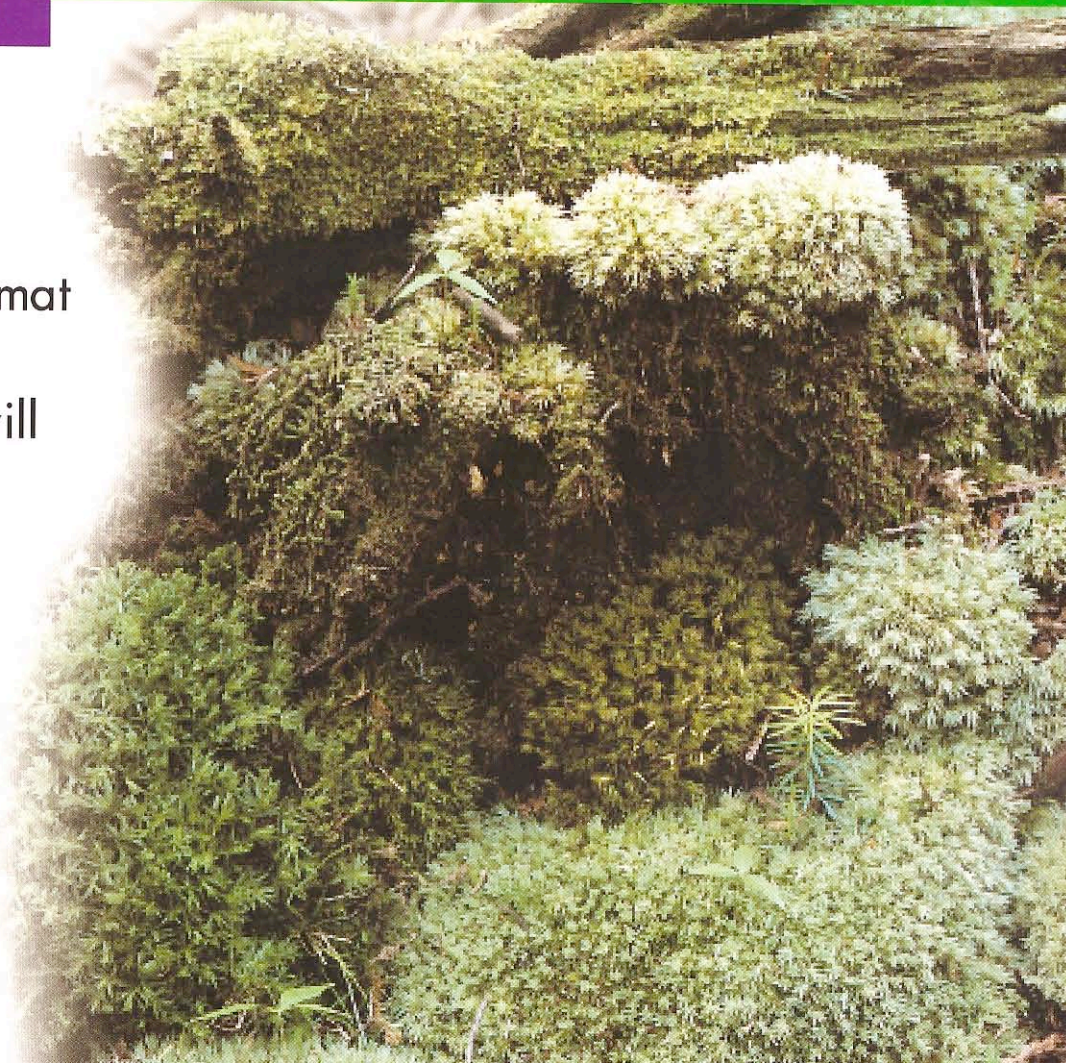
These leaves make a thick spongy carpet that feels good to your feet.





## LOOK AGAIN

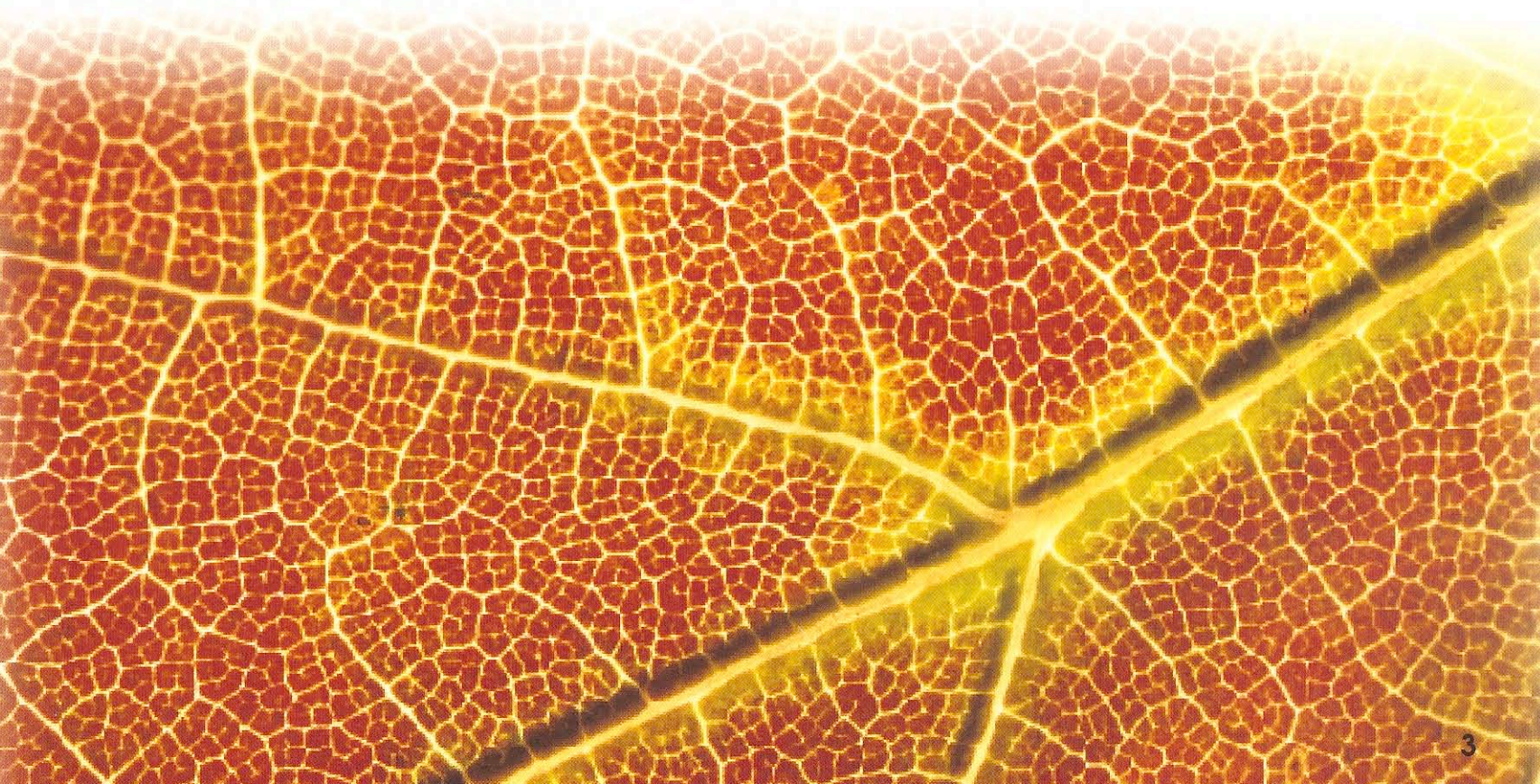
Moss grows on logs, stumps, rocks, and soil. It looks like a soft green mat and it feels like one, too! If you look closely, you will see that the mat is made of many separate plants. Each plant has its own stem and leaves.





## LOOK ONCE

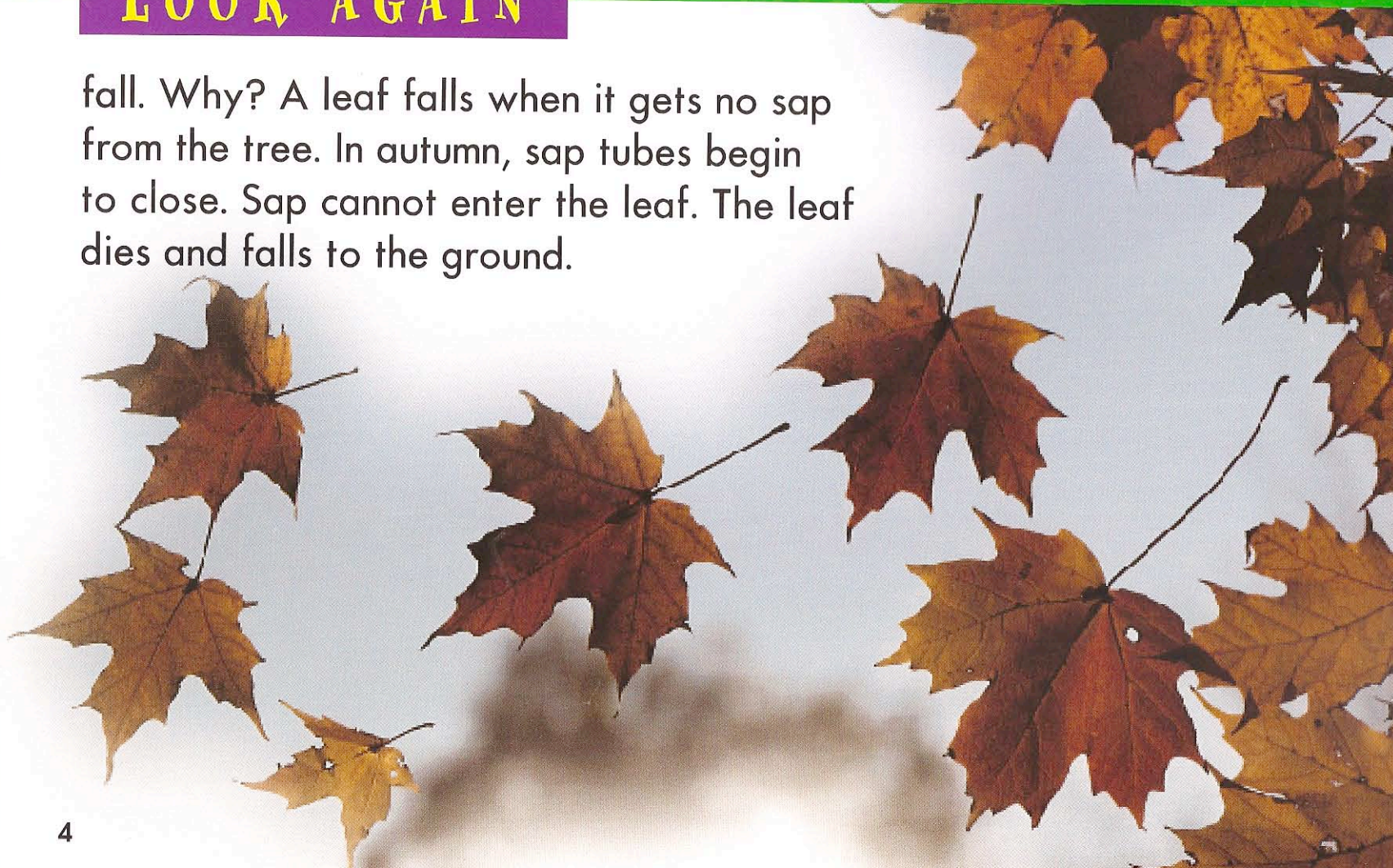
When we see these colors, we know that a leaf will soon . . .





## LOOK AGAIN

fall. Why? A leaf falls when it gets no sap from the tree. In autumn, sap tubes begin to close. Sap cannot enter the leaf. The leaf dies and falls to the ground.





## LOOK ONCE

You eat leaves like these in coleslaw and sauerkraut.





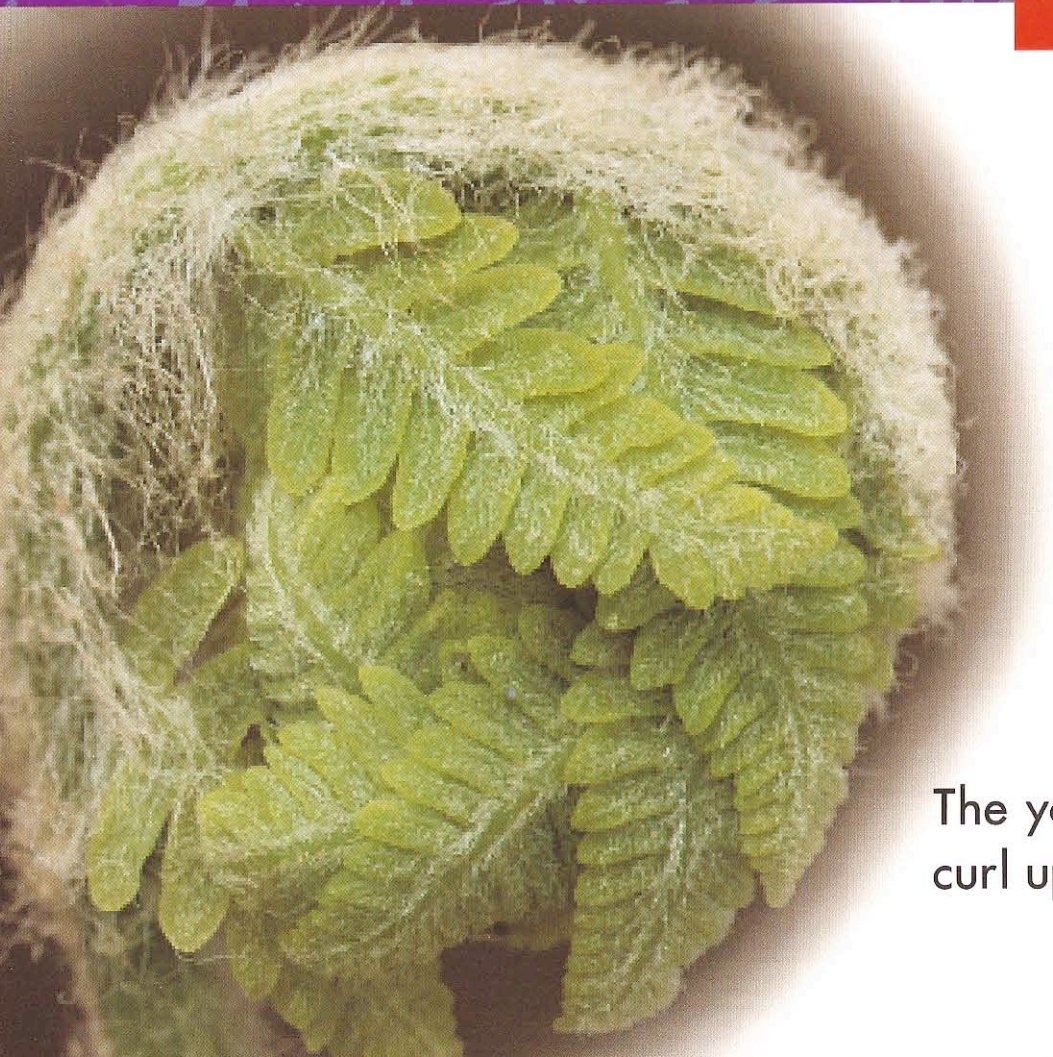
## LOOK AGAIN

A head of cabbage is made of leaves. The leaves grow on a short thick stalk. They wrap around the stalk to make a ball. Some cabbage leaves are green and some are red. If you cut through a cabbage head, the curly leaves make a beautiful pattern.





## LOOK ONCE



The young shoots of this plant  
curl up like the head of a fiddle.



## LOOK AGAIN

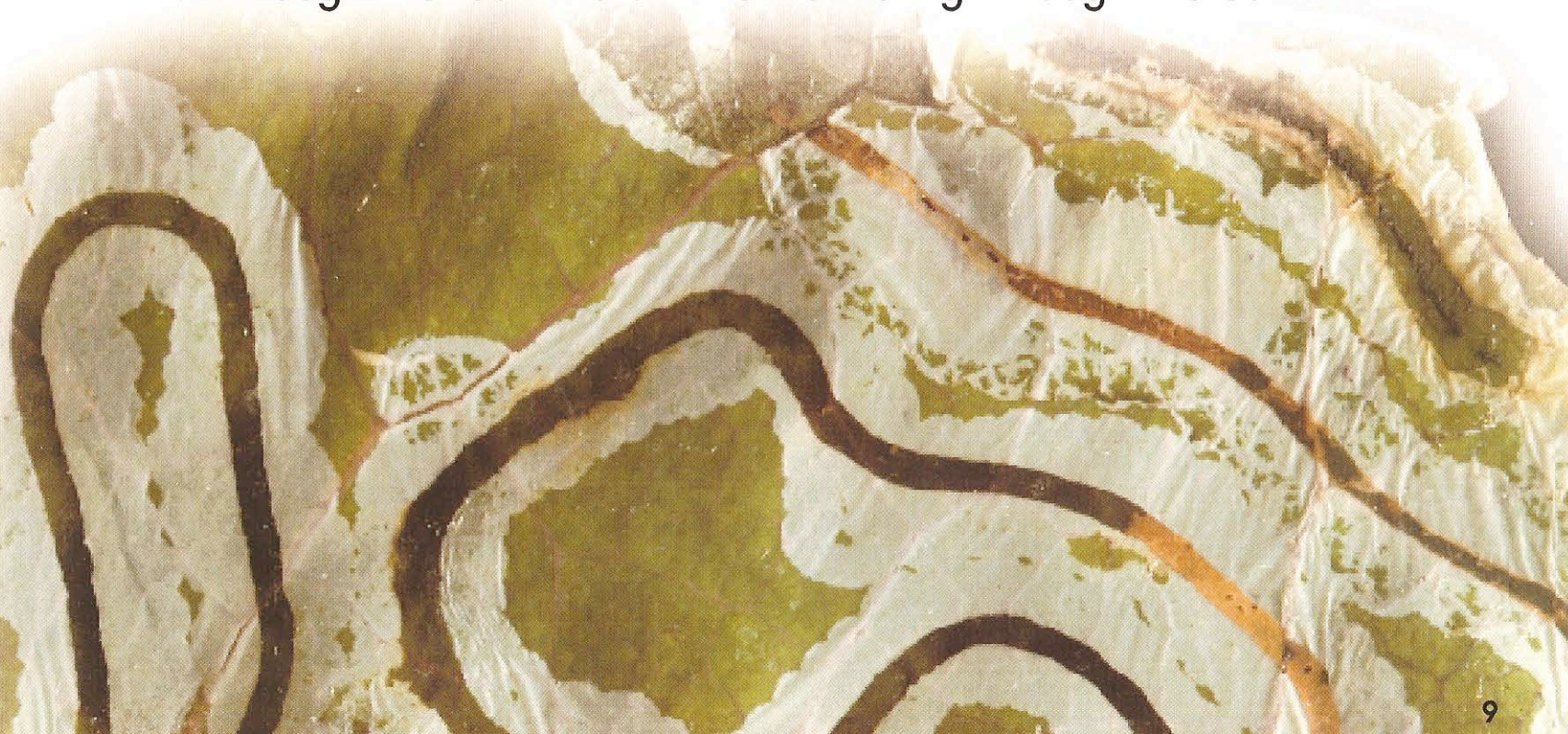
When ferns come up in spring,  
their shoots are called "fiddleheads."  
The fiddleheads uncurl into frilly,  
pointy leaves called "fronds."  
Fern fronds can carpet  
a forest's floor.





## LOOK ONCE

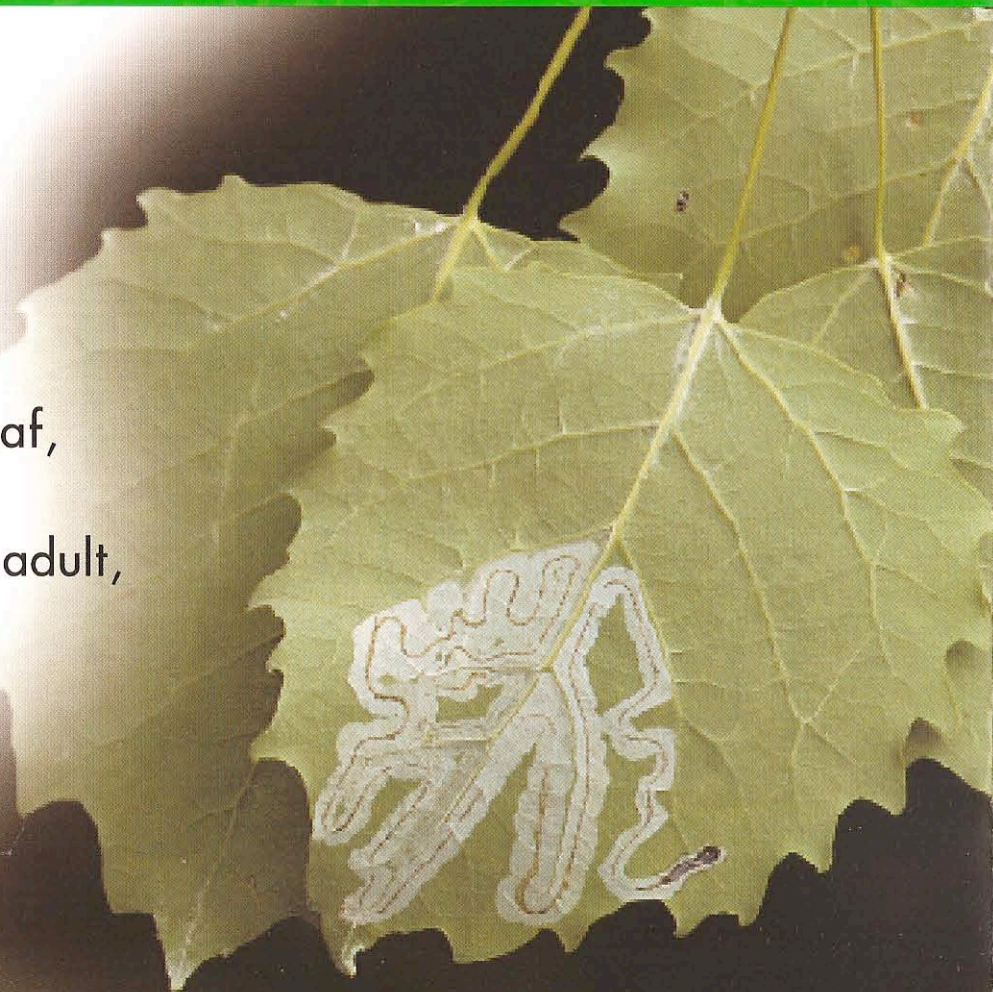
These curvy lines are made by an insect. It tunnels through the leaf like a miner tunneling through the earth.





## LOOK AGAIN

An insect lays its eggs inside a leaf. The egg hatches and a larva comes out. It is called a "leaf miner." It eats its way through the leaf, making a tunnel as it goes. When the larva becomes an adult, it flies away to find a mate. Females will lay their eggs in another leaf.





A close-up photograph of a Venus flytrap (Dionaea muscipula) showing its characteristic red, fleshy lobes and numerous long, thin, reddish-brown trigger hairs. Each hair is topped with a small, clear, glistening droplet of fluid. The base of the plant is a pale yellowish-green. The background is a soft, out-of-focus green.

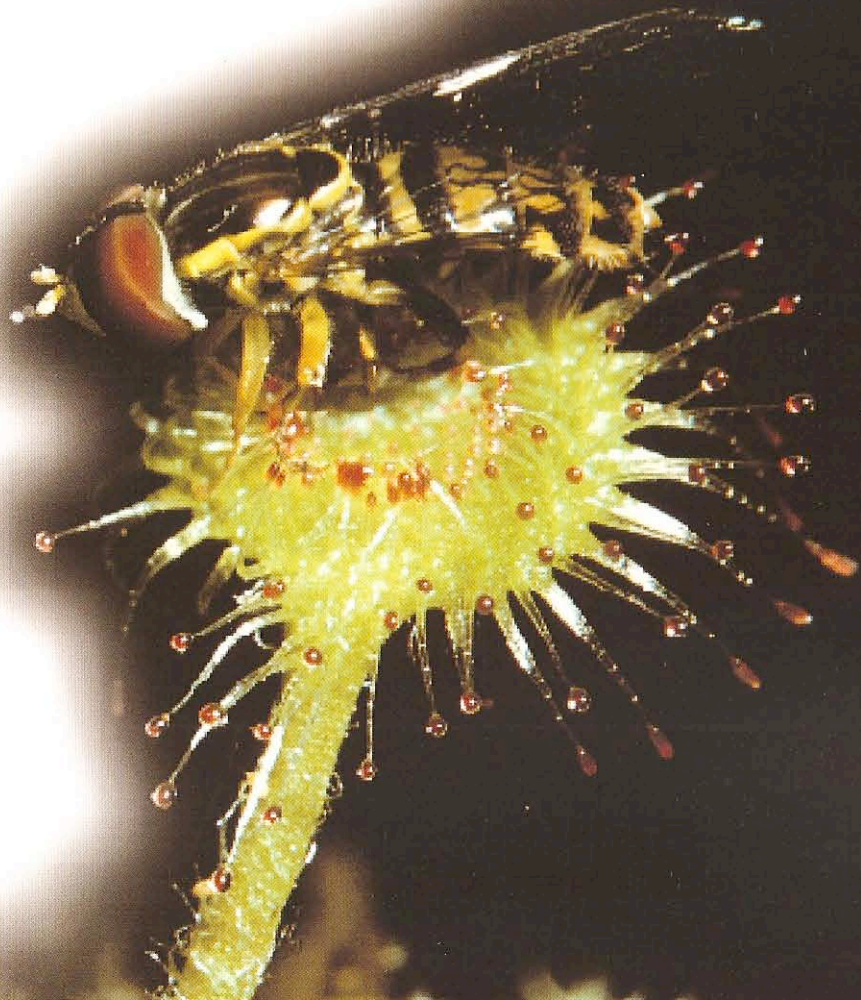
## LOOK ONCE

These are not drops of dew, but they are a pretty sight when they glisten in the sunshine. If you are a fly, you don't want to get too close!



## LOOK AGAIN

The leaves of the sundew are covered with long tentacles. A drop of sticky gum sits at the tip of each tentacle. When a fly lands on a sundew, it sticks to the gum. The plant oozes more gum. The fly cannot get free. Slowly the sundew will digest the fly.





## LOOK ONCE

It is spring. These young leaves have just appeared. Where were they all winter? They were packed inside a bud.





## LOOK AGAIN

All winter the maple tree has no leaves, but it has many buds. Buds are little cases that protect the tiny leaves inside. In spring, sap flows through the trees. The buds swell. The leaves inside are growing larger and larger. One day the buds burst open. Now the tree has leaves.

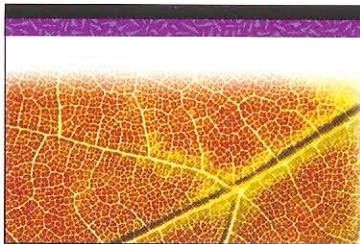




# LOOK ONCE



**A.**



**B.**



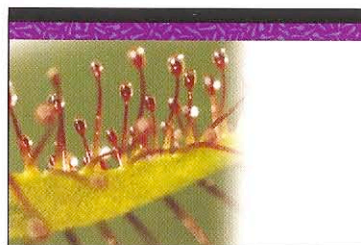
**C.**



**D.**



**E.**



**F.**



**G.**

Look closely. What do you see?



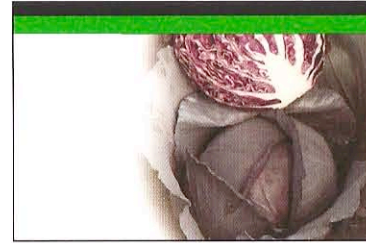
# LOOK AGAIN



**A.** Moss



**B.** Fall foliage



**C.** Cabbage



**D.** Fern



**E.** Leaf miner



**F.** Sundew



**G.** Maple



LOOK ONCE LOOK AGAIN

## CHOOSE FROM 24 TITLES IN THIS EXCITING SERIES!

### EXPLORING HABITATS

- CTP 3001 At the Seashore
- CTP 3002 Underfoot
- CTP 3003 At the Pond
- CTP 3004 In the Desert
- CTP 3005 In the Meadow
- CTP 3006 In the Park
- CTP 3007 Among the Flowers
- CTP 3008 In the Garden
- CTP 3009 At the Zoo
- CTP 3010 In the Forest
- CTP 3011 In a Tree
- CTP 3012 At the Farm

### EXPLORING PLANTS & ANIMALS

- CTP 3028 Animal Feet
- CTP 3029 Animal Ears
- CTP 3030 Animal Noses
- CTP 3031 Animal Tails
- CTP 3032 Animal Eyes
- CTP 3033 Animal Mouths
- CTP 3034 Animal Skin & Scales
- CTP 3035 Animal Feathers & Fur
- CTP 3036 Plant Stems & Roots
- CTP 3037 Plant Leaves
- CTP 3038 Plant Blossoms
- CTP 3039 Plant Fruits & Seeds