

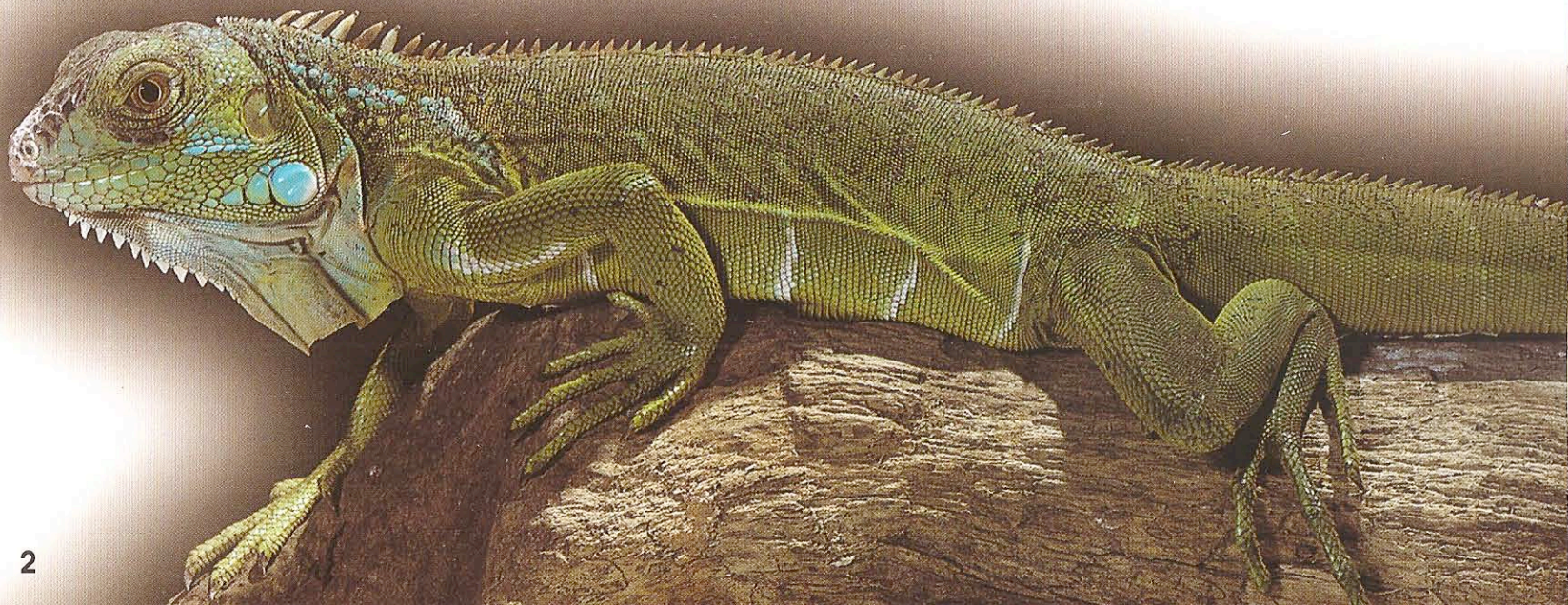
LOOK ONCE

These spines may remind you of a dinosaur, but this animal is alive today. Some people keep it as a pet.



LOOK AGAIN

Iguanas aren't as big as dinosaurs, but they can be six feet long. An iguana's rough skin has hard bumpy scales. Along its back and tail, the iguana has a row of soft spines.



LOOK ONCE

What insect's wings are covered with black and orange scales?



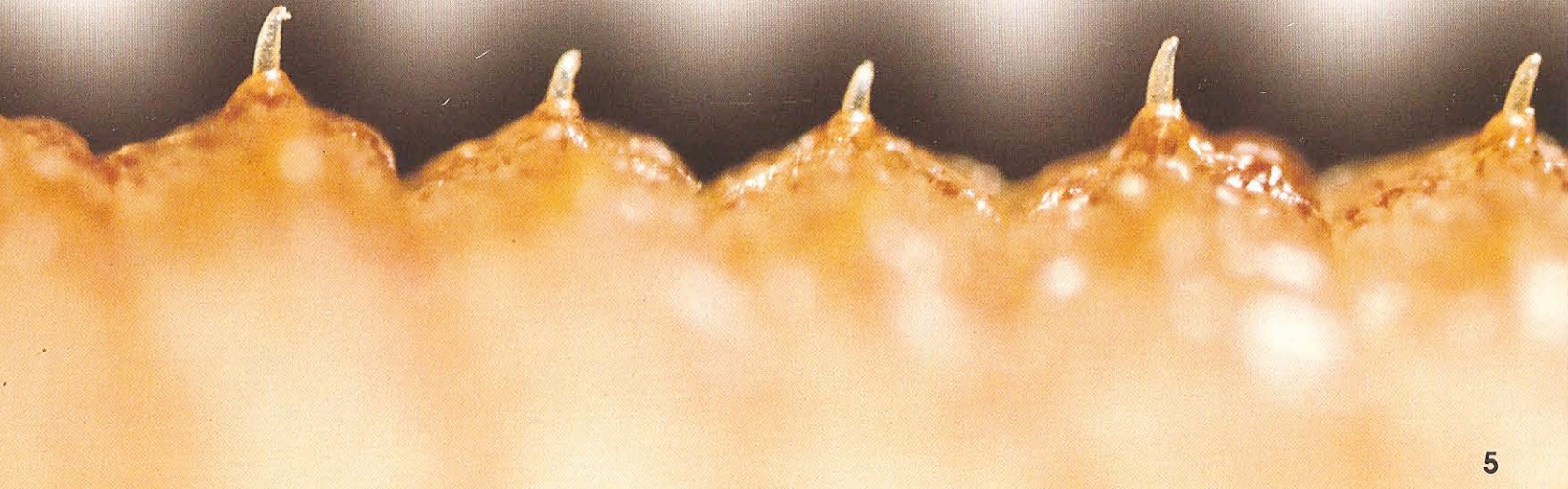
LOOK AGAIN

The scales on a monarch butterfly's wings overlap like shingles on a roof. Under the scales, a butterfly's wings are thin and clear. The scales protect the wings. This monarch has just come out of a case called a "chrysalis." After its wings dry out, the butterfly will flutter away.



LOOK ONCE

These short stiff bristles help this animal move through earth.



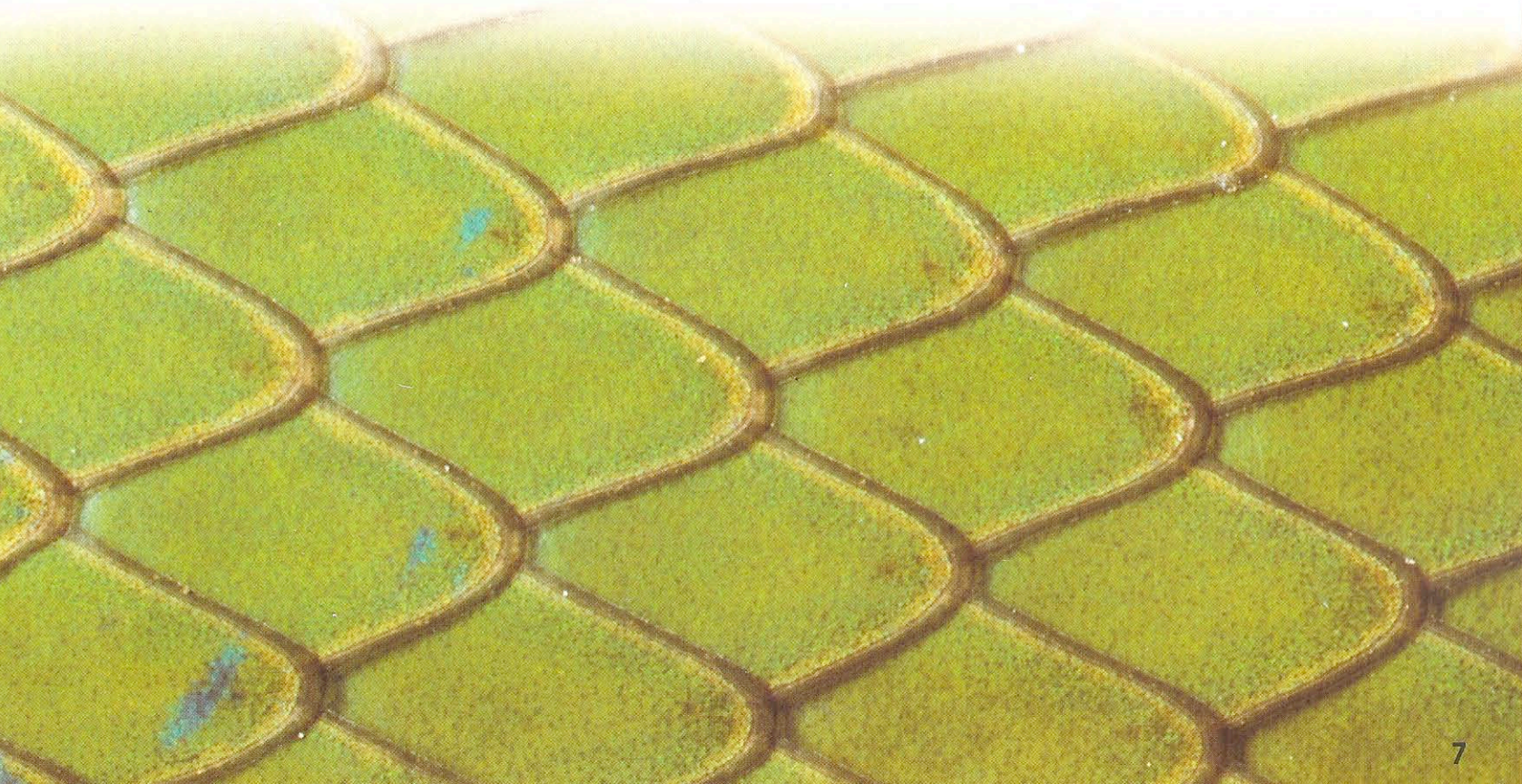
LOOK AGAIN

An earthworm's body is made of rings called "segments." Each segment has bristles that help the worm grip the soil so it can move. The bristles also pick up vibrations in the soil. This helps the worm know when to hide.



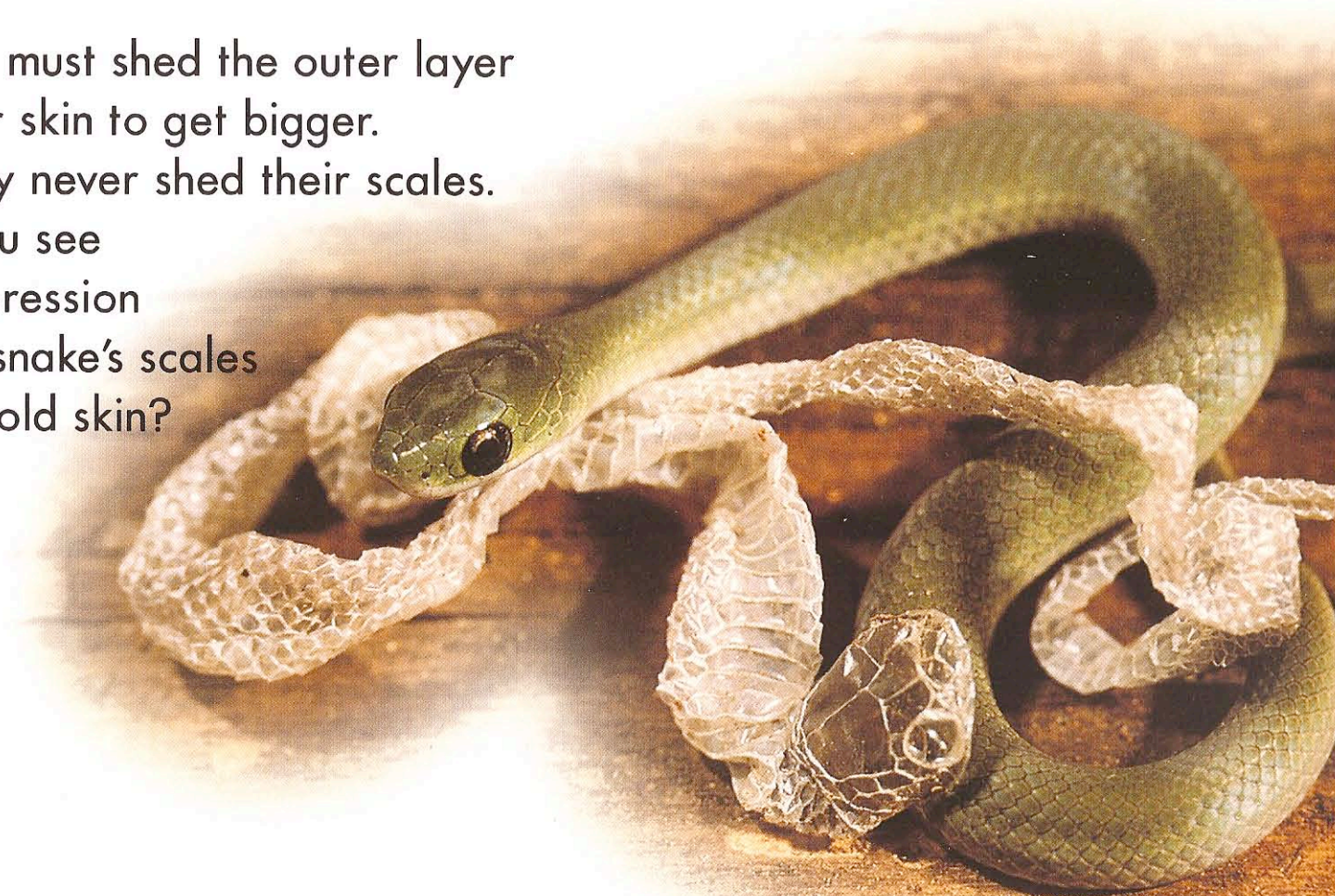
LOOK ONCE

This skin is made of hard colorful scales.



LOOK AGAIN

Snakes must shed the outer layer of their skin to get bigger. But they never shed their scales. Can you see the impression of the snake's scales on the old skin?



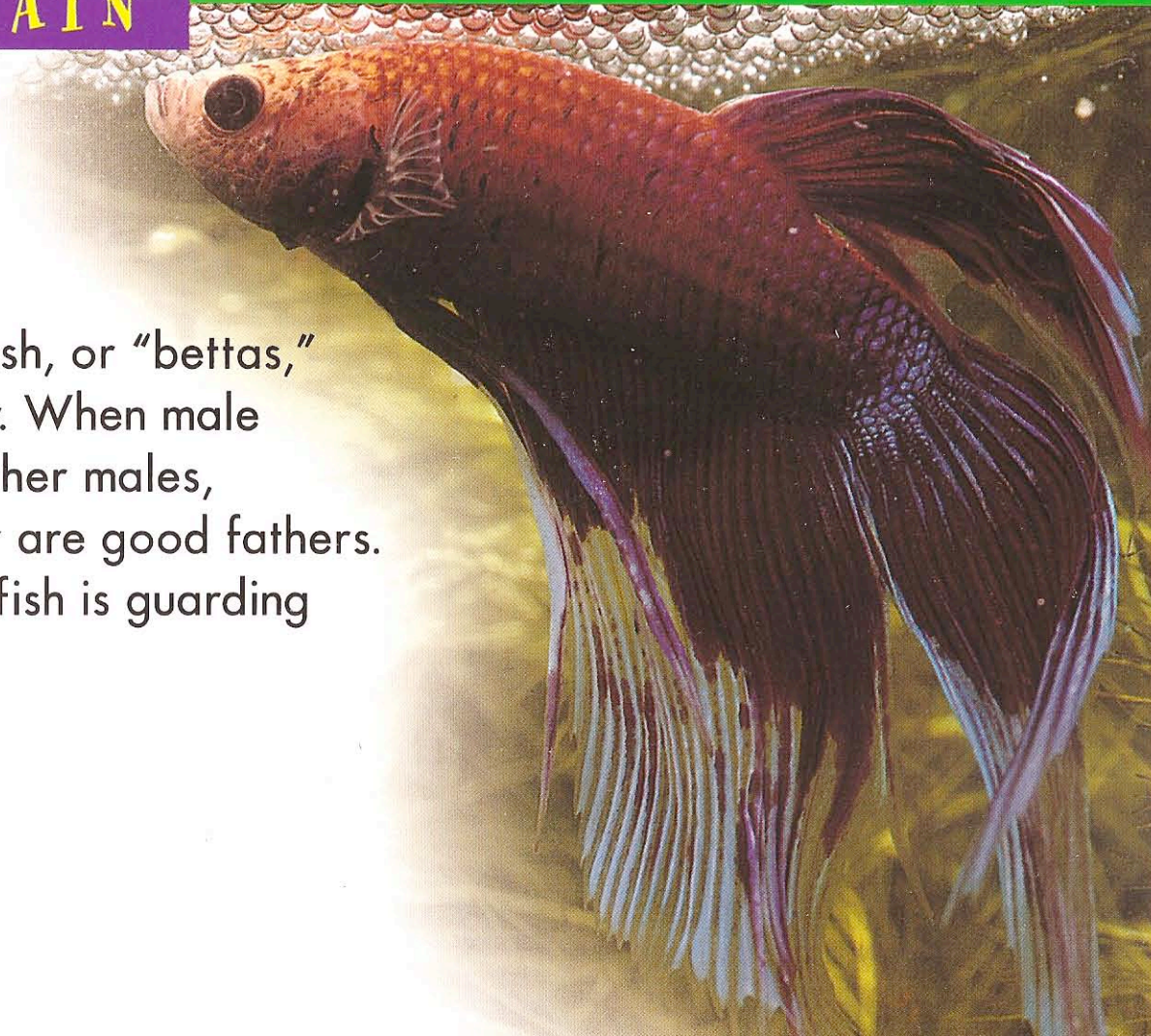


LOOK ONCE

This brightly colored fish
is a famous fighter.

LOOK AGAIN

Siamese fighting fish, or “bettas,” don’t like company. When male fighting fish see other males, they fight. But they are good fathers. This male fighting fish is guarding its nest.

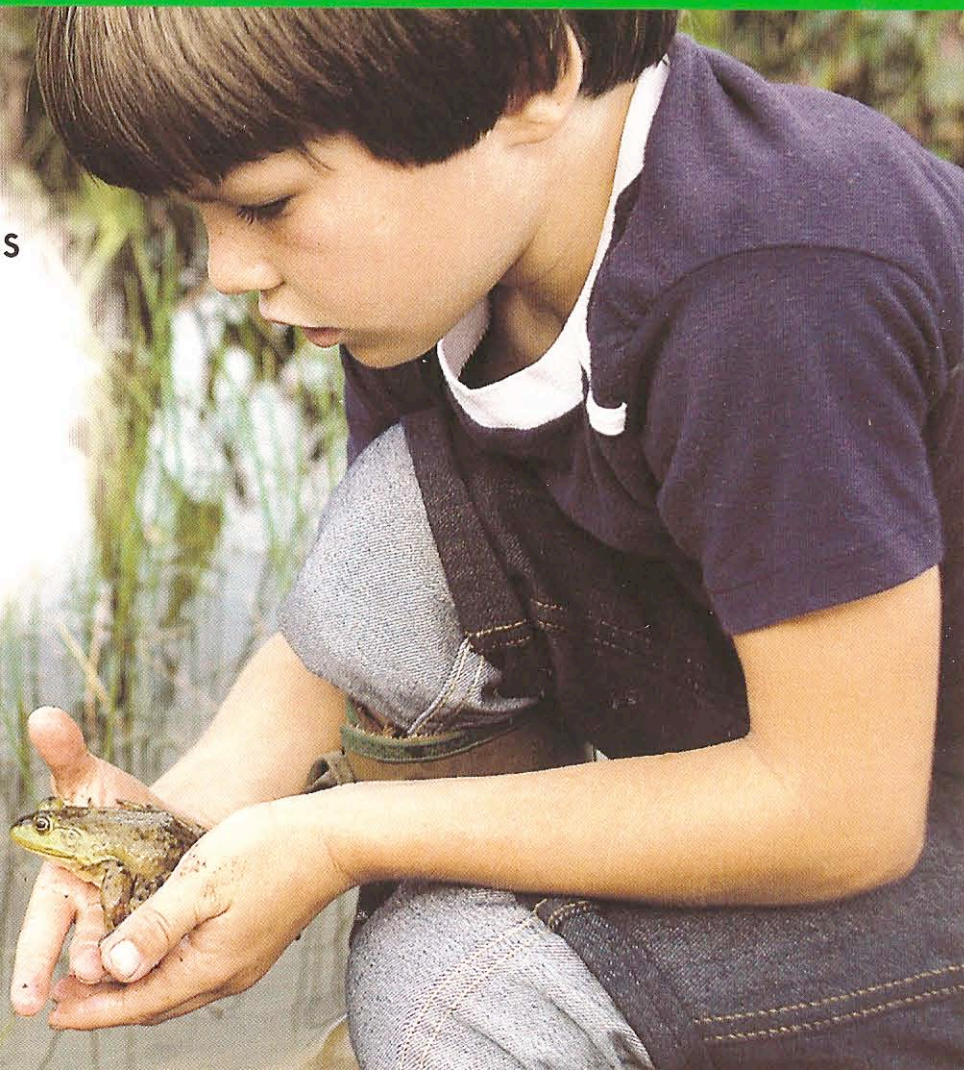


LOOK ONCE

You won't have any trouble finding skin like this.

LOOK AGAIN

Just look at your fingertips!
These ridges help your fingers
feel and lift very small things.
The ridges make a pattern
called a fingerprint.
No two people have exactly
the same fingerprint.



A close-up photograph of a turtle's carapace, showing the intricate patterns and textures of the scutes. The shell is dark brown with lighter, concentric growth rings. The central vertebral scute is prominent, showing a distinct longitudinal ridge. The scutes are arranged in a symmetrical pattern along the midline.

LOOK ONCE

These are plates,
but you wouldn't want
to eat from them!

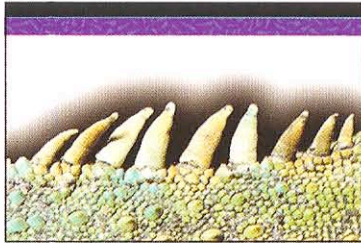
What animal has hard
plates all over its back?

LOOK AGAIN

A turtle's shell is made of hard plates that fit snugly together. The shell's curved shape is called a dome. Domes are very strong. The underside of a turtle is also made of plates, but they are flat. This turtle is called a box turtle.



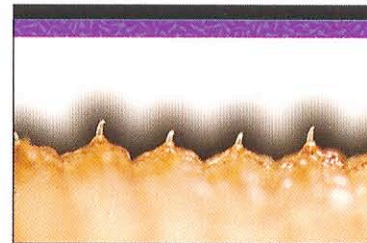
LOOK ONCE



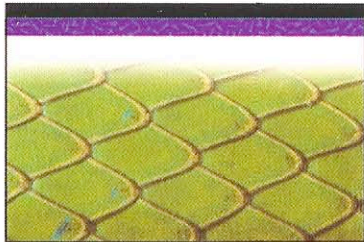
A.



B.



C.



D.



E.



F.



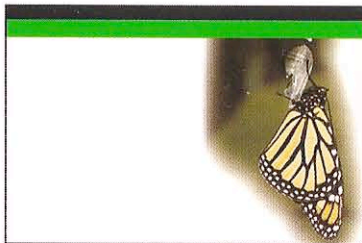
G.

Look closely. Which animals have the skin or scales shown here?

LOOK AGAIN



A. Iguana



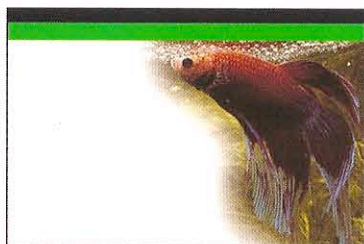
B. Monarch butterfly



C. Earthworm



D. Snake



E. Siamese fighting fish



F. Boy



G. Box turtle

LOOK ONCE LOOK AGAIN

CHOOSE FROM 24 TITLES IN THIS EXCITING SERIES!

EXPLORING HABITATS

CTP 3001 At the Seashore
CTP 3002 Underfoot
CTP 3003 At the Pond
CTP 3004 In the Desert
CTP 3005 In the Meadow
CTP 3006 In the Park
CTP 3007 Among the Flowers
CTP 3008 In the Garden
CTP 3009 At the Zoo
CTP 3010 In the Forest
CTP 3011 In a Tree
CTP 3012 At the Farm

EXPLORING PLANTS & ANIMALS

CTP 3028 Animal Feet
CTP 3029 Animal Ears
CTP 3030 Animal Noses
CTP 3031 Animal Tails
CTP 3032 Animal Eyes
CTP 3033 Animal Mouths
CTP 3034 Animal Skin & Scales
CTP 3035 Animal Feathers & Fur
CTP 3036 Plant Stems & Roots
CTP 3037 Plant Leaves
CTP 3038 Plant Blossoms
CTP 3039 Plant Fruits & Seeds