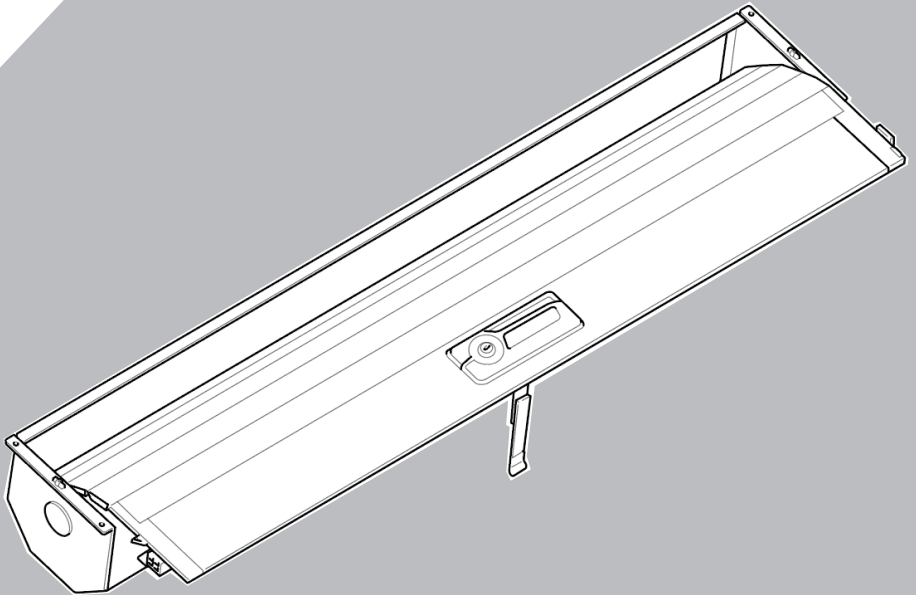




# Roller Cover Installation Guide

RO1-015



## TABLE OF CONTENTS

General Warnings	pg. 2
Maintenance and Cleaning	pg. 2
Model Parts	pg. 3
Fixings, Accessories	pg. 4
Tools Required, Assembly	pg. 5-15
Troubleshooting	pg. 16-17



**Read the instruction carefully!**

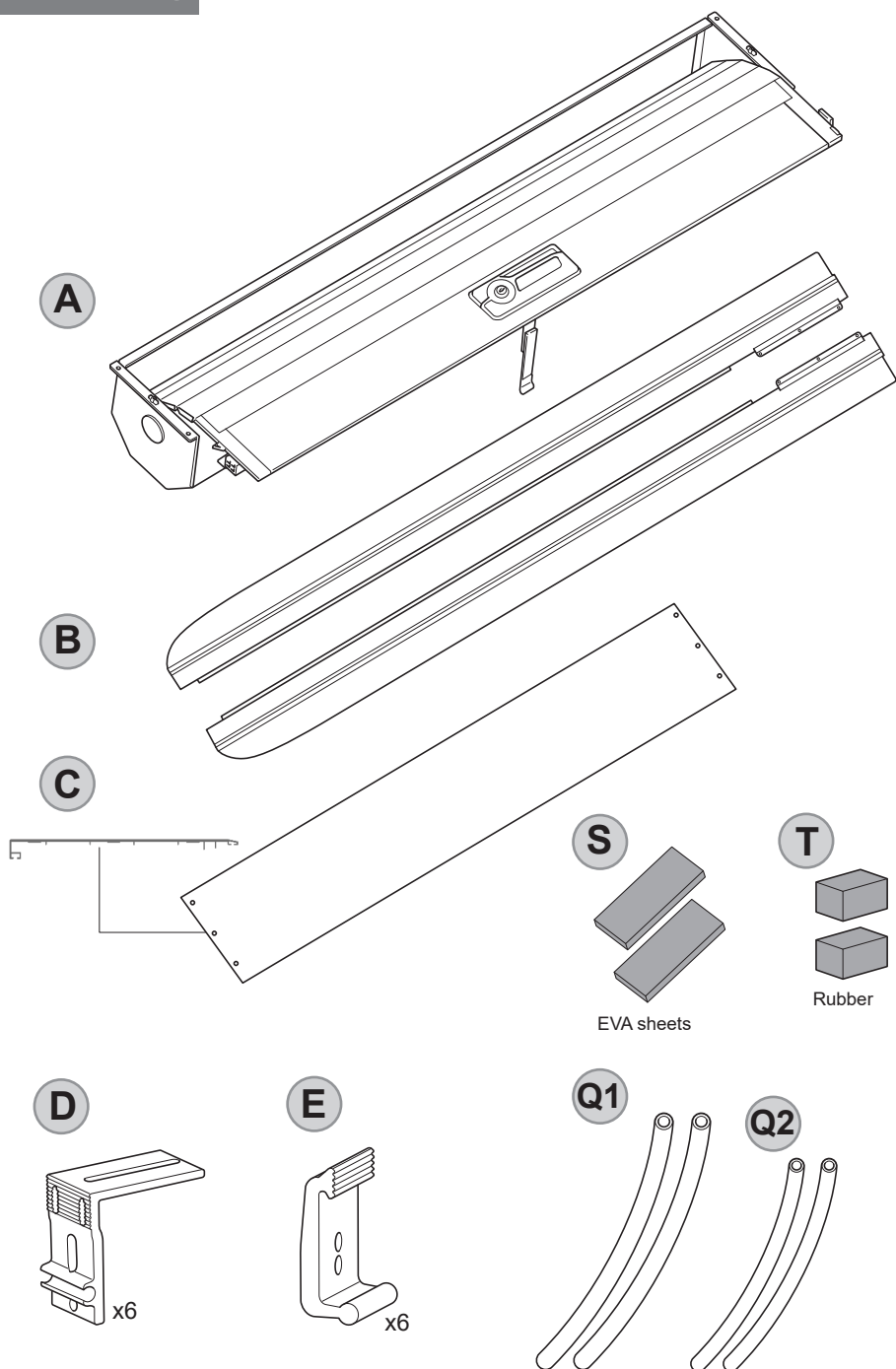
### GENERAL WARNINGS

1. Open the packaging carefully and remove all parts. **Caution:** Handle all components with care to avoid damage.
2. Assemble the main body with the track by following the provided instructions. Secure the parts by tightening the screws.
3. Prepare the bed area by clearing the space and removing any objects. Locate the drain hole according to the instructions. **Important:** Pay attention to the gap between the compartment front wall and the cab before drilling. Avoid damaging the cab.
4. Install the bracket as shown in the instructions.
5. Lift the cover into place on the car as per the instructions. Use the positioning parts to align it correctly. Start by securing the screws closest to the cab. **Important:** Adjust the slide to be parallel (within  $\pm 0.5\text{mm}$ ). For the rear part, press firmly (refer to the photo) to bring the track closer to the rail, then tighten the screws at the rear.
6. Adjust the shutter's shrinkage and tightness according to your desired usage.
7. Lubricate the slide rail and coil using the recommended lubricant only. Do not use any other lubricants.

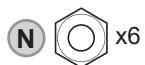
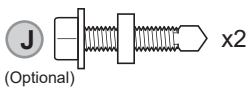
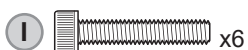
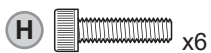
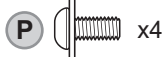
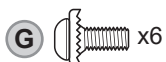
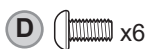
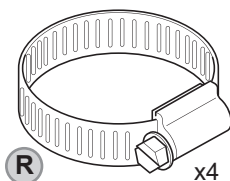
### MAINTENANCE AND CLEANING

1. Avoid stacking heavy loads on top of the rolling cover to prevent damage.
2. To unlock the cover, gently pull it back and press to release the lock.
3. Do not modify or transfer the system in any way. Always follow the manual strictly—unauthorized changes can lead to damage or void the warranty.
4. Do not use abrasive materials, chemicals, or gasoline to clean the cover.  
**Important:** Ensure that gravel or debris does not enter the slide rail to maintain smooth operation.

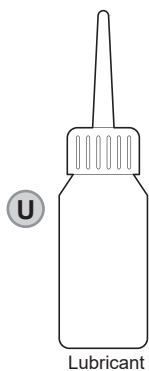
## MODEL PARTS



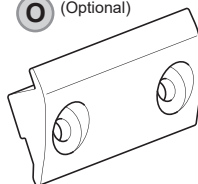
## FIXINGS



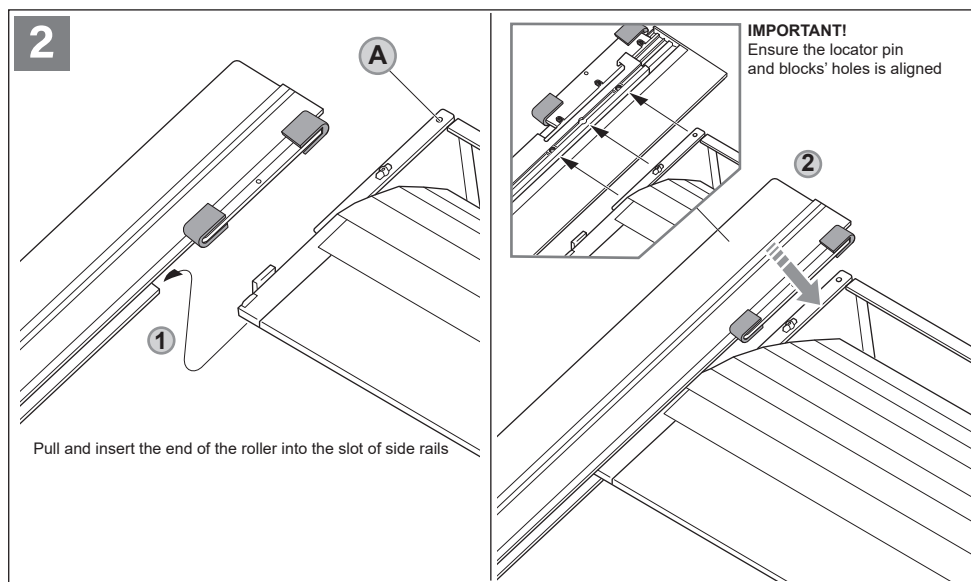
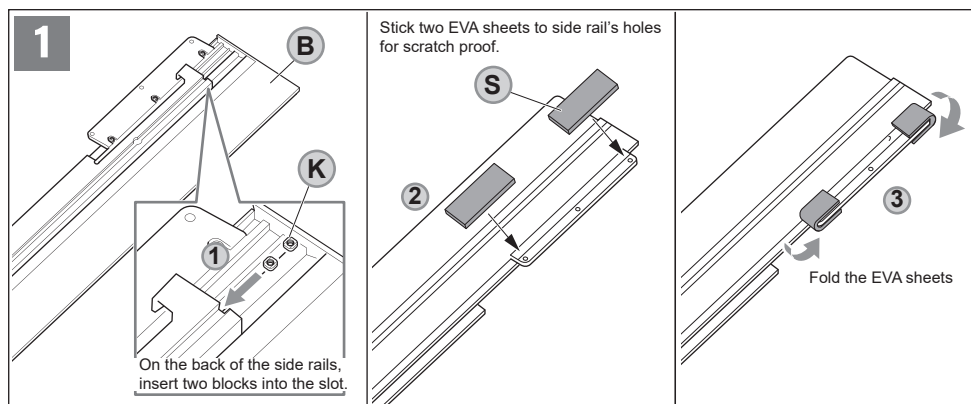
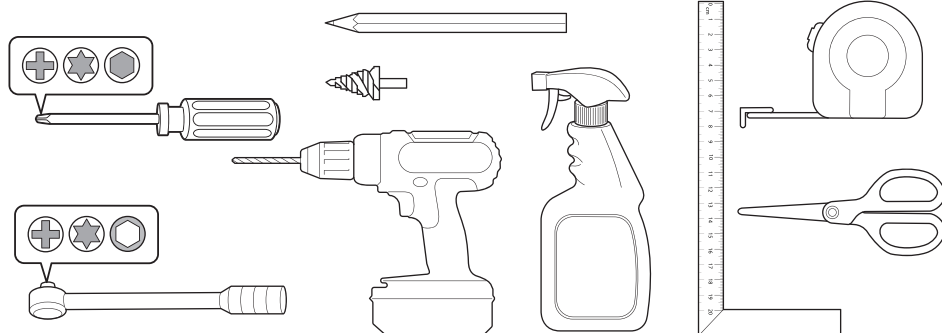
## ACCESSORIES

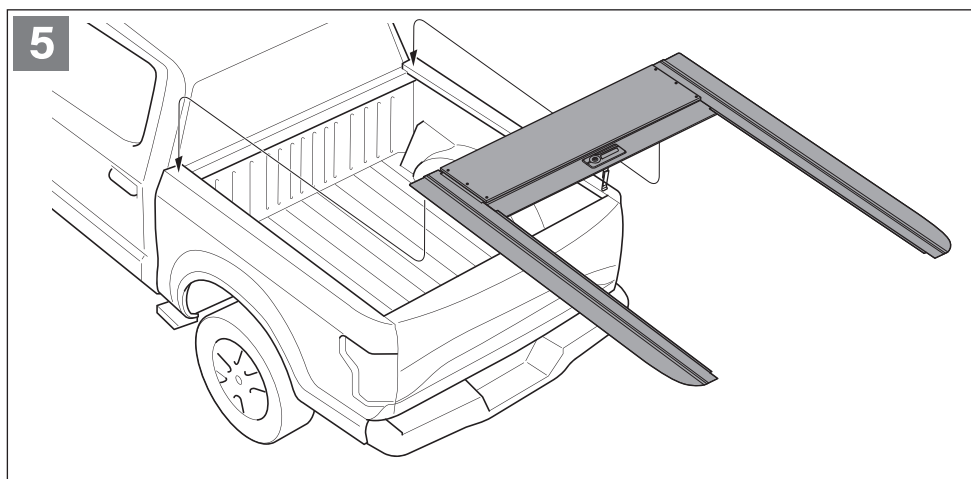
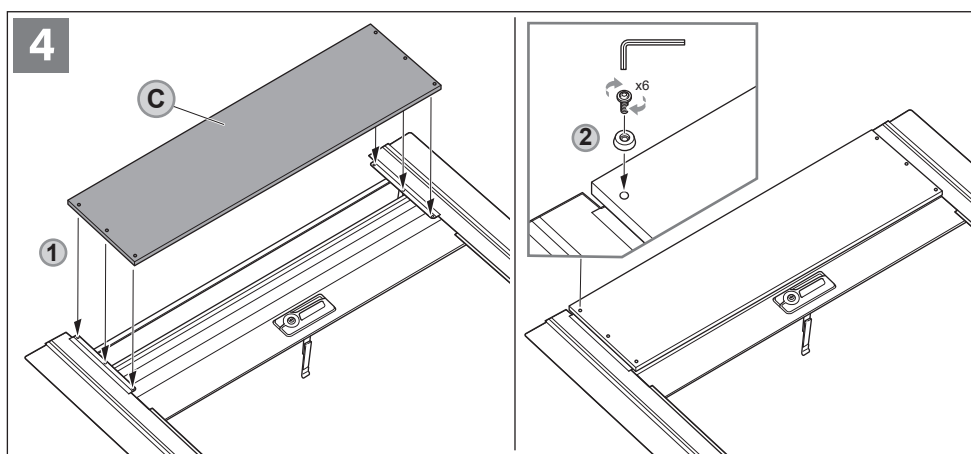
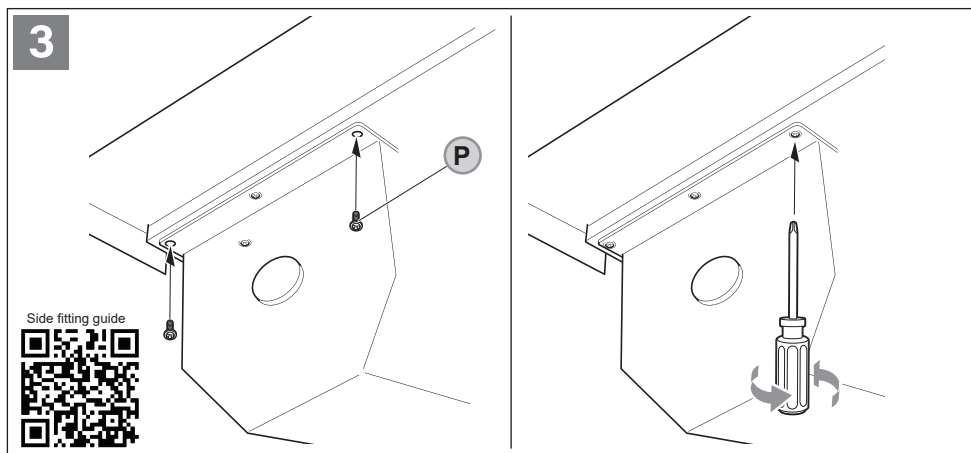


Lubricant



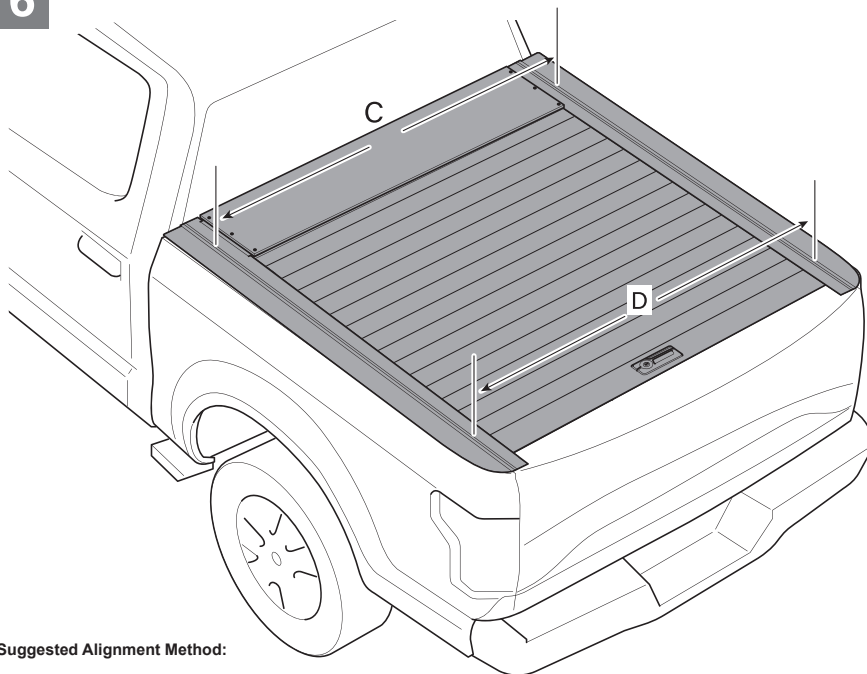
## TOOLS REQUIRED





6

**Aligning the Cover:** Ensure the roller is in the closed position. Center the cover evenly in the middle for proper alignment.



**Suggested Alignment Method:**

**Measure Dimension C:** Measure at the front of the cover.

**Measure Dimension D:** Measure at the rear of the cover.

**Ensure C = D:** Both measurements should be equal, with a tolerance of  $\pm 0.5\text{mm}$  being acceptable. Keep the tracking rail parallel during this process.

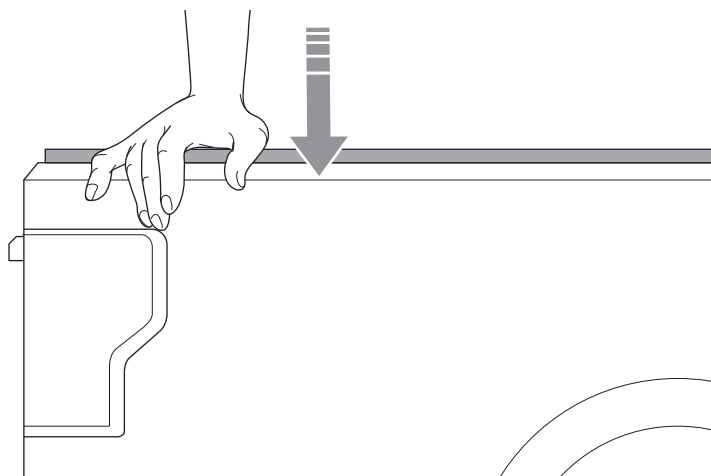
**Visual Inspection:** Use your eye to confirm the cover is aligned parallel and centered to the body.

**Tailgate Overlap:** Slightly overlap the tailgate to ensure a proper seal.

7

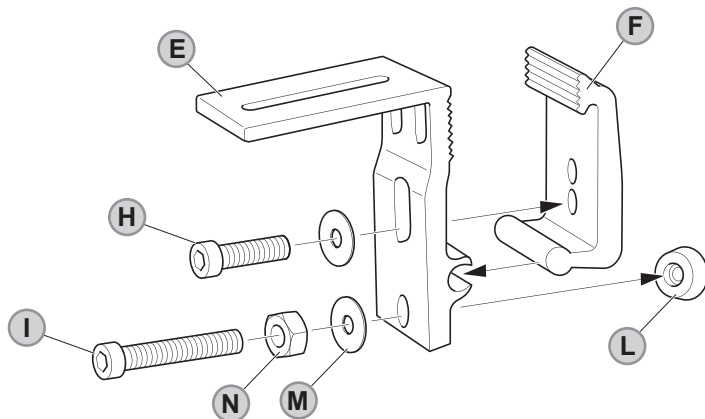
**Rear Part Adjustment:** Apply sufficient pressure to the rear part of the cover to ensure it lies flat.

This is crucial—if the cover doesn't roll freely after mounting, it is likely either not tightened enough or too tight (causing bending)



# 8

## Assemble the clamps

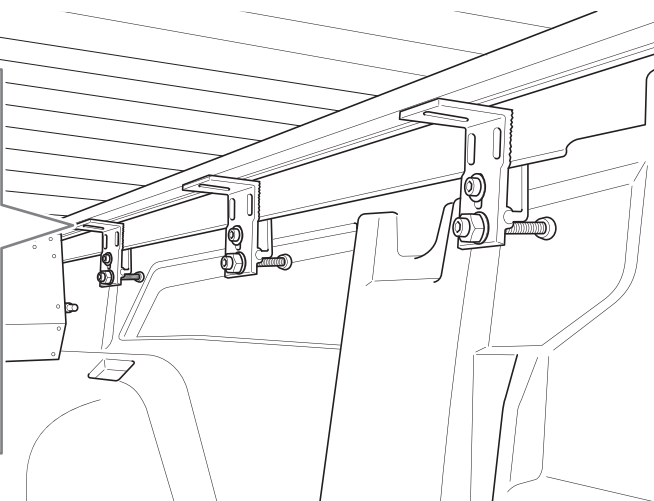
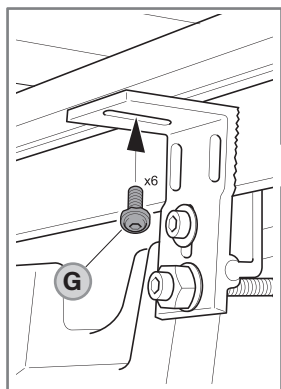


### Notes:

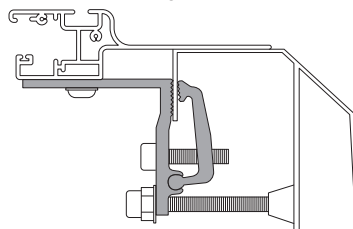
Depending on the cover model, only 4 clamps may be provided. Ensure they are spaced evenly as necessary.

# 9

## Installation of the Cover



FRONT VIEW



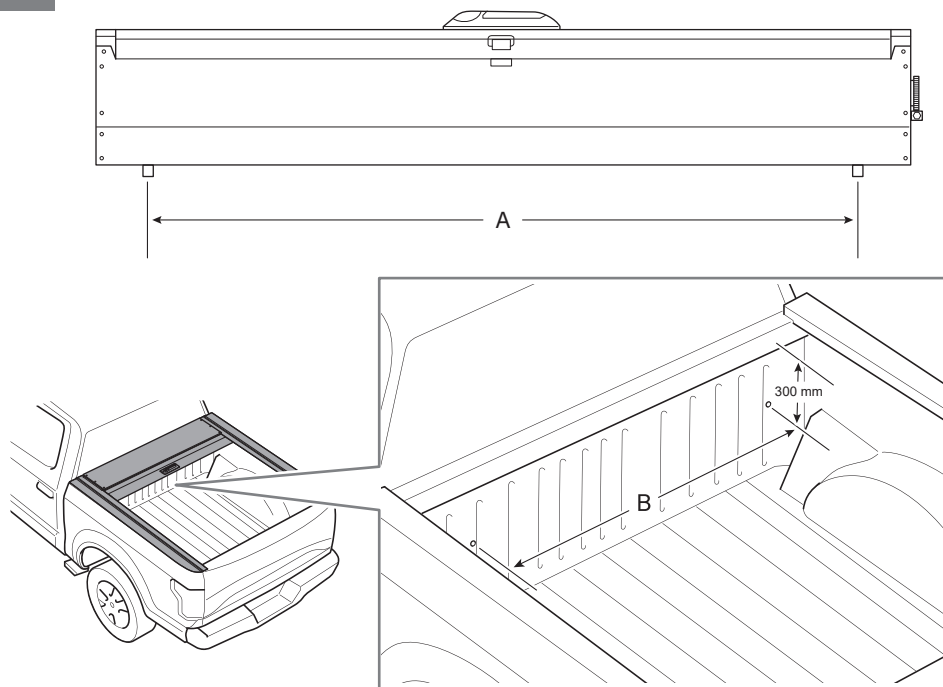
- 1.) The cover should still be attached from the previous steps.
- 2.) Fully close the cover by pulling it out.
- 3.) Align the cover so it sits securely, sealing the rear (close the tailgate to verify proper alignment).
- 4.) Once aligned, open the cover and install the clamps.
- 5.) Evenly space the clamps by sliding them over the tub lip, then screw them into place on the cover.
- 5.) Apply significant pressure to the sides of the cover and tighten the screws.
- 6.) Use bolt "H" (shown below) to securely tighten each clamp.
- 7.) Ensure the clamps are tightened as much as possible for a firm hold.



10

### Measure, Mark, and Drill the Drain Holes

Carefully measure the required locations, mark the spots, and then drill the drain holes as specified.

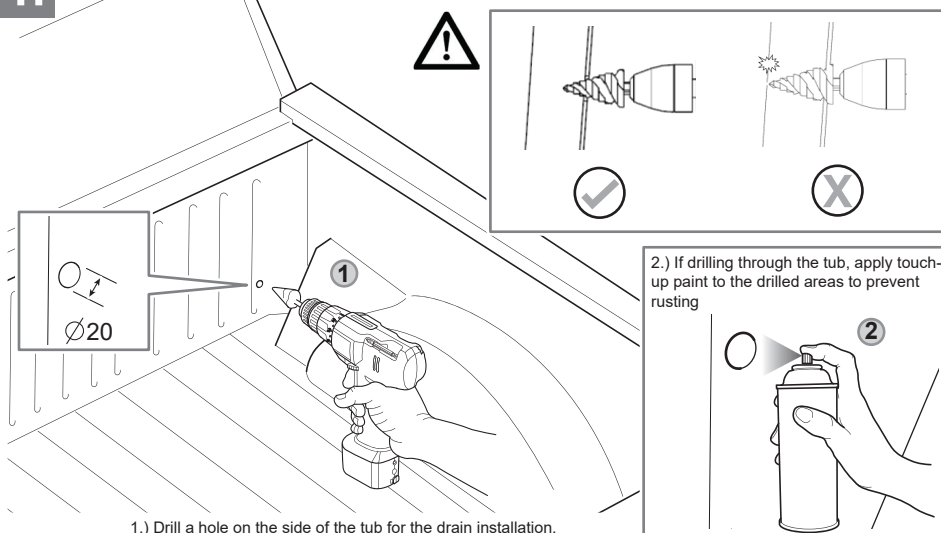


Measure dimension "A", then mark dimension "B". Set A = B.

These recommended measurements ensure proper drainage of water from the canisters.

11

Using the lines as a guide and referring to the next slide, mark and drill holes for the drain lines to the outside of the tub. The purpose of these holes is to prevent kinking of the lines and ensure free water flow from the canister.



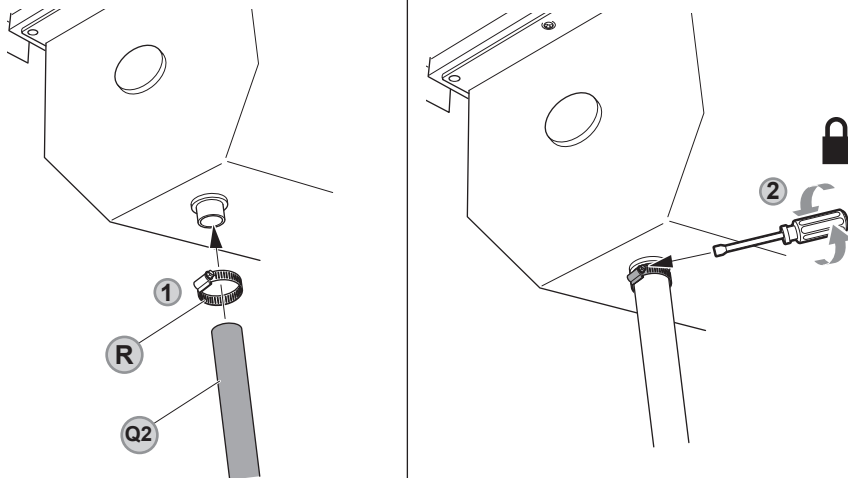
1.) Drill a hole on the side of the tub for the drain installation.

2.) If drilling through the tub, apply touch-up paint to the drilled areas to prevent rusting

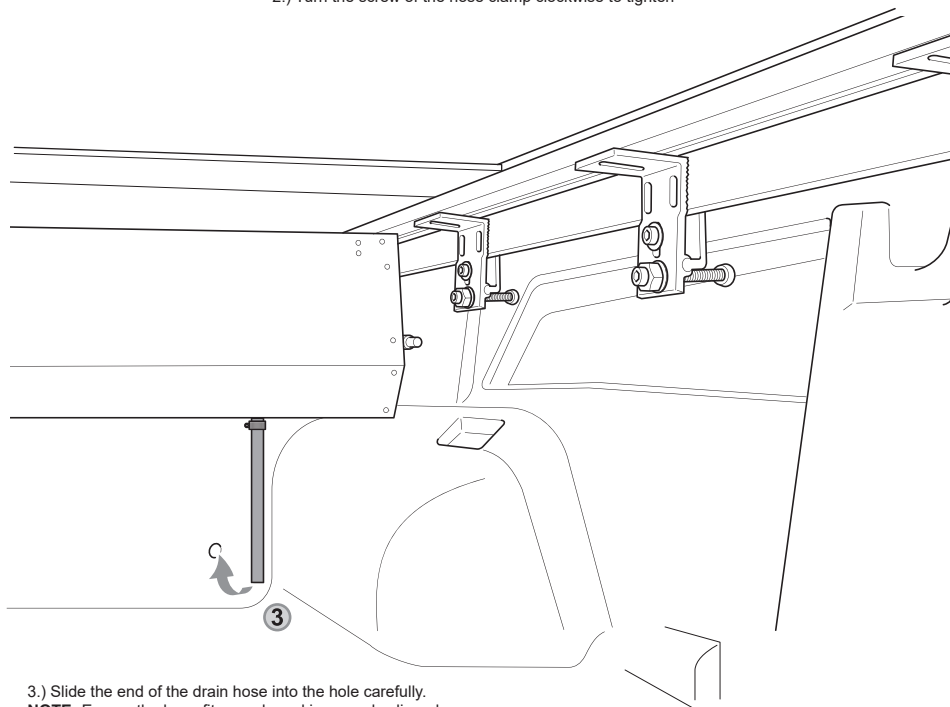
# 12

## Install the Drain Lines on the Bottom of the Canister

Carefully lift the cover onto the tub to position it correctly.



- 1.) Attach the drain lines to the cover as shown in the diagram.
- 2.) Turn the screw of the hose clamp clockwise to tighten



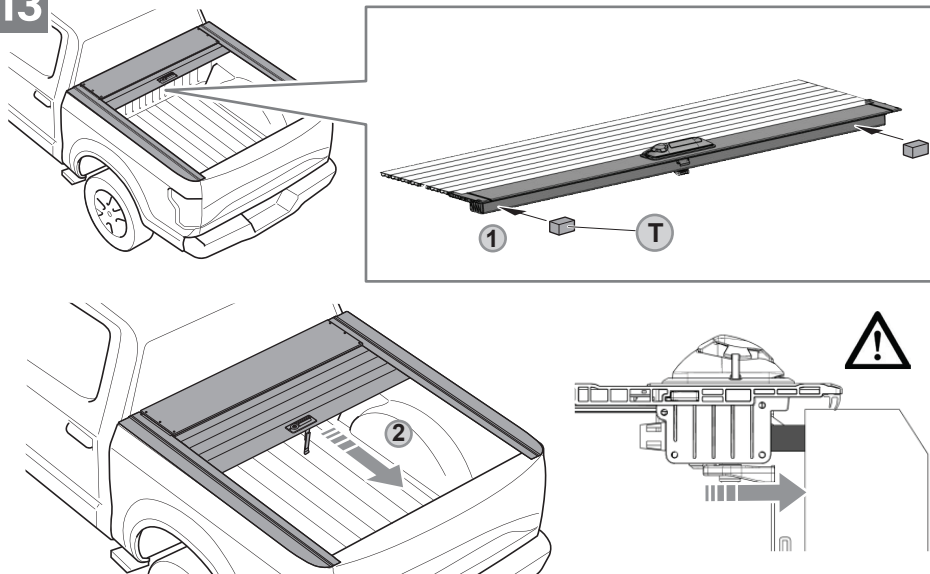
- 3.) Slide the end of the drain hose into the hole carefully.

**NOTE:** Ensure the hose fits snugly and is properly aligned.

If necessary, use a sealant or clamp to secure the hose in place, preventing leaks.

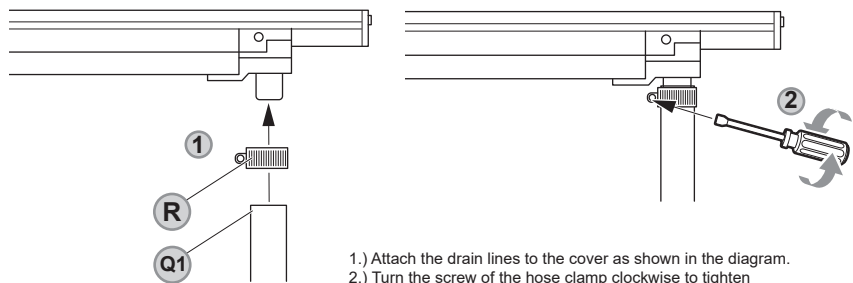
13

Insert Rubber on the Ends to Secure the Roller Cover in the Closed Position

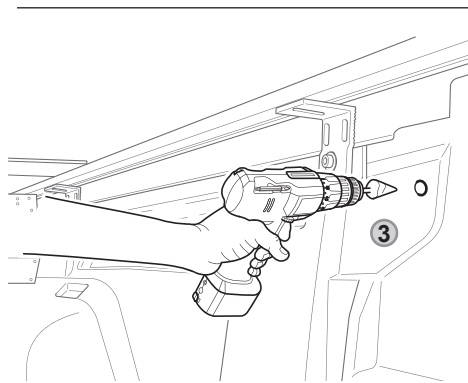


14

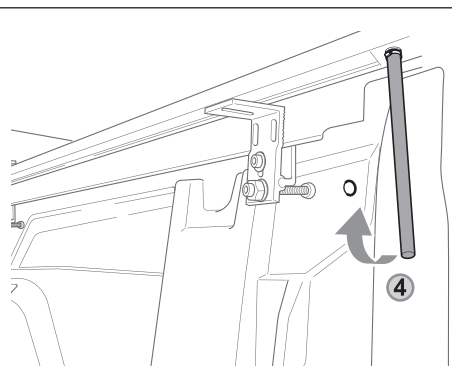
Securely attach the rear drain to its designated connection point.



- 1.) Attach the drain lines to the cover as shown in the diagram.
- 2.) Turn the screw of the hose clamp clockwise to tighten



- 3.) Drill a hole on the side of the tub for the drain installation.

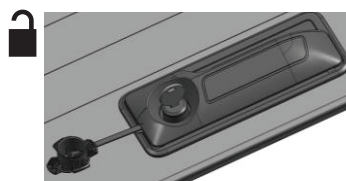
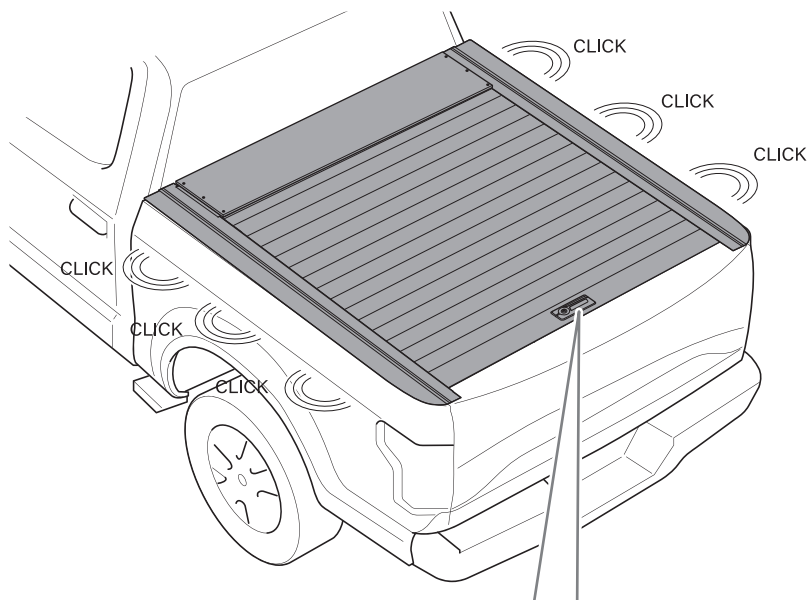
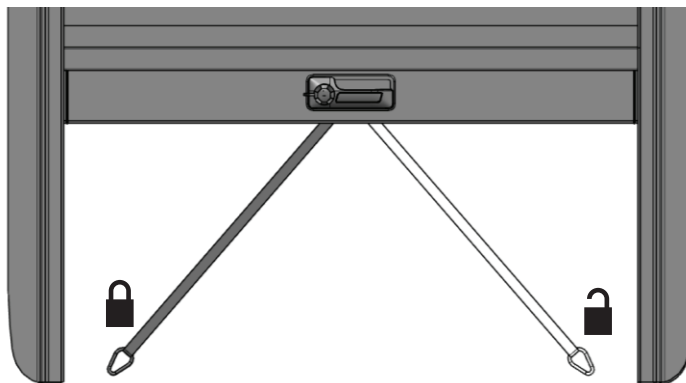


- 4.) Slide the end of the drain hose into the hole carefully.  
**NOTE:** Ensure the hose fits snugly and is properly aligned.  
If necessary, use a sealant or clamp to secure the hose in place, preventing leaks.

15

**Locking Adjustment:**

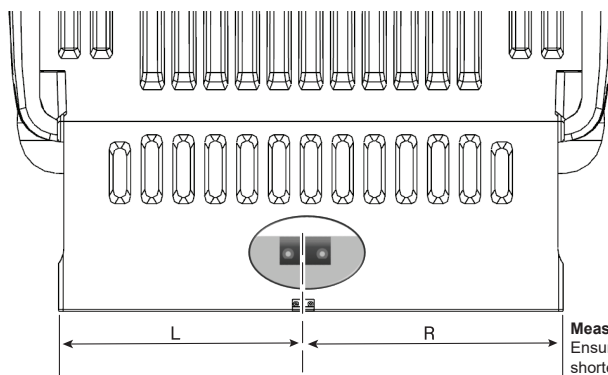
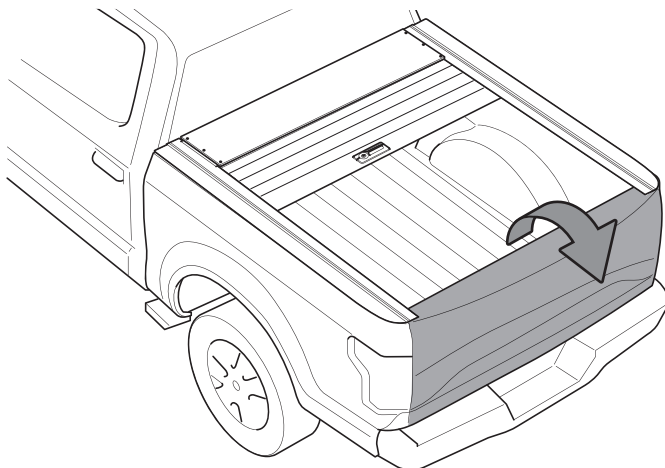
Use the pull rope to determine whether you want the roller cover to lock in the middle or at just the end.



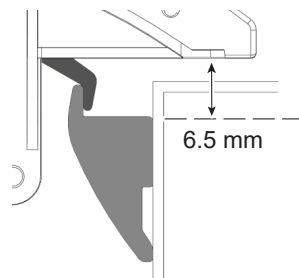
**16**

**OPTIONAL: Roller Cover Locking for the Tailgate**

This option is recommended only if your tailgate is not lockable.



**SIDE VIEW**



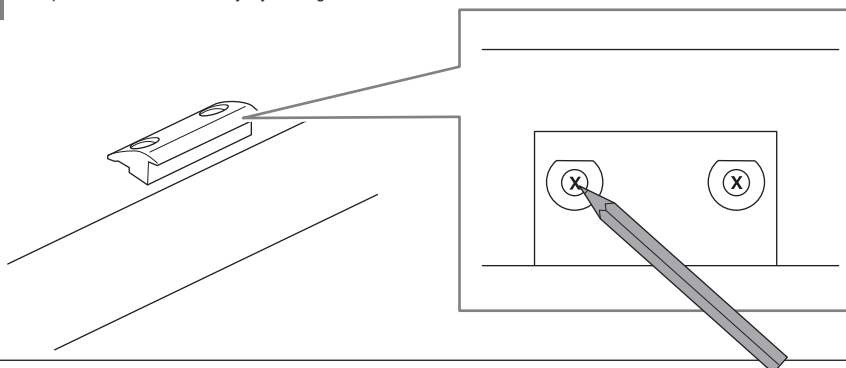
**Measure the Distance of the Rear Door:**

Ensure that the distance on the left (L) side is 42mm shorter than the right (R) side.

**17**

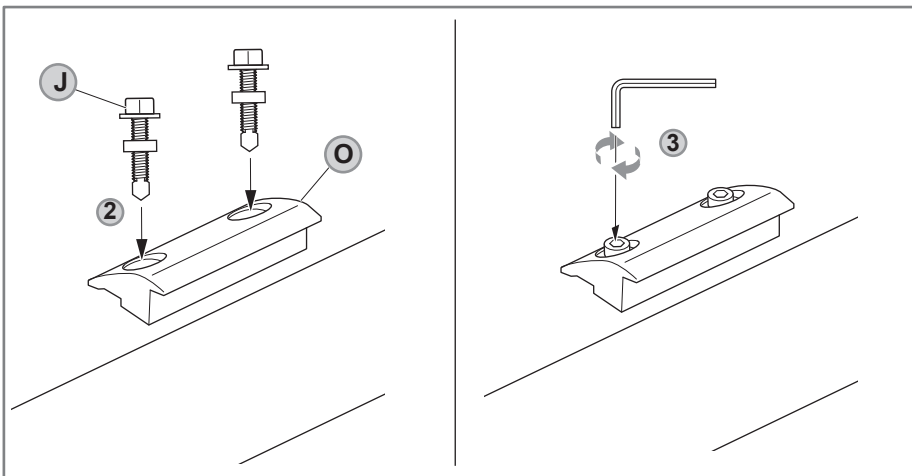
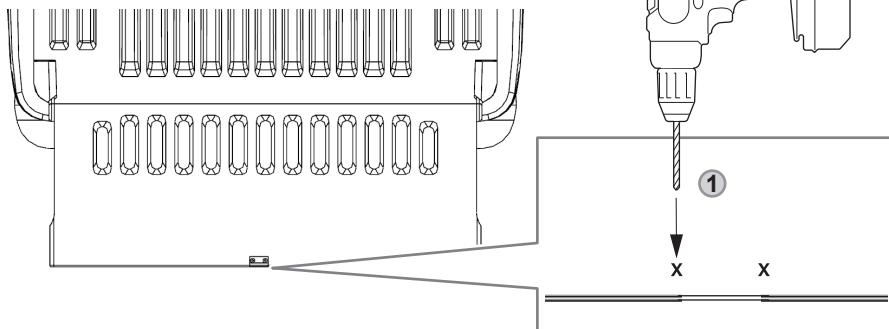
**OPTIONAL: Mark the tailgate**

This option is recommended only if your tailgate is not lockable.



**18**

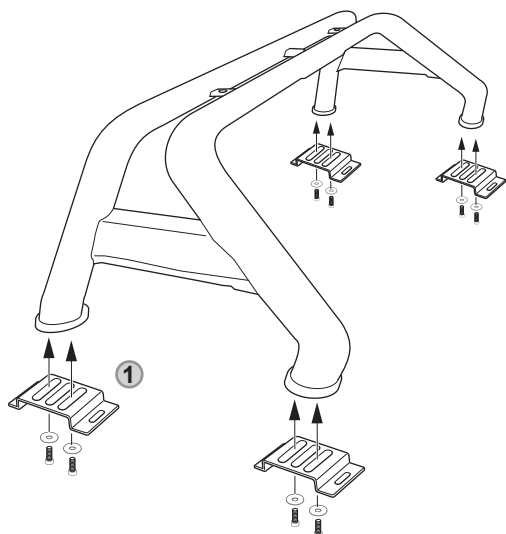
**OPTIONAL:** Using the mark, drill holes to the tailgate.  
This option is recommended only if your tailgate is not lockable.



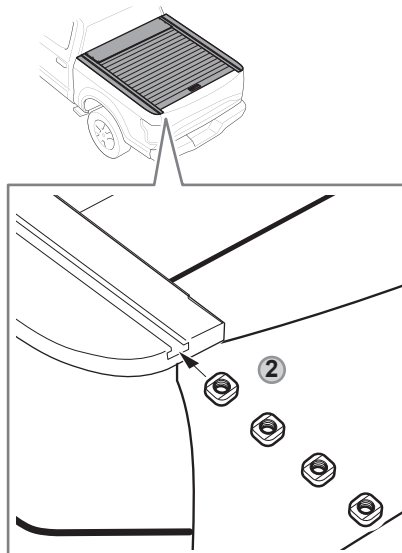
# 19

## OPTIONAL: Sports Bar or Accessory Mounting

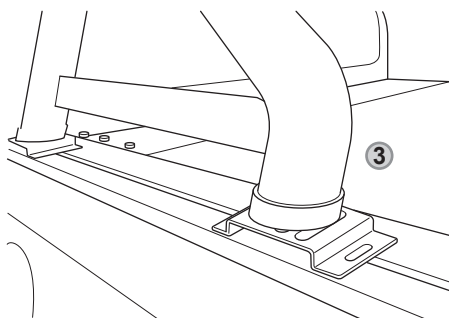
If your order includes a sports bar, it will come with the necessary adapters. To install, attach the adapters to the accessory rail as shown.



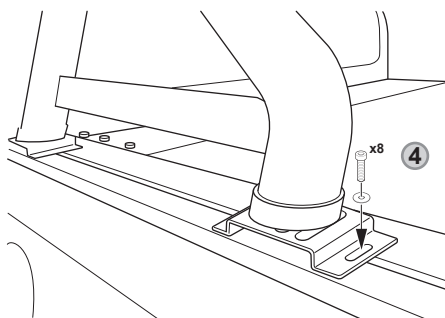
1.) Attach the sports bar adapters to your sports bars using the factory bolts. Only tighten the bolts by hand (finger-tight) to allow for proper alignment during installation on the vehicle.



2.) Insert four blocks into the slot on the front section of each side rail (four per side).



3.) Carefully lift the sports bars onto the roller cover. Align them properly, then adjust the mounts as needed to best fit the specific sports bars being used.



4.) Insert bolt and tighten.

## TROUBLESHOOTING

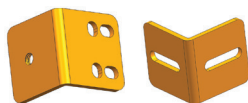
SKU	Tailgate-side width	Middle width	Cab-side width	Canister	Adaptor	Bracket (Width)	Foam
RO1-001 - ROLERCOVERXCLASS	113.78	140.59	149.50	1405	4 sets	40 mm: 8 sets 80 mm: 4 sets	10 mm: 1 set
RO1-002 - ROLLERAMAROK	118.64	129.17	142.99	1445	4 sets	40 mm: 8 sets	10 mm: 1 set
RO1-003 - ROLLER2021BT50	120.36	132.82	138.00	1405	4 sets	40 mm: 8 sets 80 mm: 4 sets	10 mm: 1 set
RO1-004 - ROLLERCOLORADO	124.43	134.59	132.45	1435	4 sets	40 mm: 8 sets 80 mm: 4 sets	10 mm: 1 set
RO1-005 - ROLLER2009COLORADO (ROLLERRC-COLORADO)				1345	4 sets	40 mm: 8 sets 80 mm: 4 sets	10 mm: 1 set
RO1-006 - ROLLERAMAROK2023							
RO1-007 - HOLDENCOLORADOZ71COVER				1330		See figure 19.	5 mm: 2 sets
RO1-008 - ROLLERD40COVER	120.79	123.00	123.00	1405	4 sets	40 mm: 8 sets 80 mm: 4 sets	10 mm: 1 set
RO1-009 - D40 KING CAB	120.91	122.50	122.50	1425	4 sets	40 mm: 8 sets 80 mm: 4 sets	10 mm: 1 set
RO1-010 - FOTON-TUNLAND							
RO1-011 - ROLLERDMAX12-16	122.50	123.00	123.00	1415	4 sets	40 mm: 8 sets 80 mm: 4 sets	10 mm: 1 set
RO1-012 - ROLLER2021DMAX	118.37	124.08	134.02	1405	4 sets	40 mm: 8 sets 80 mm: 4 sets	10 mm: 1 set
RO1-013 - DMAX EXTRA CAB	120.91	122.50	122.50	1425	4 sets	40 mm: 8 sets 80 mm: 4 sets	10 mm: 1 set
RO1-014 - (SPARE SKU SLOT)							
RO1-015 - GREAT WALL STEED							
RO1-016 - ROLLERGUNHILUX	116.14	116.14	116.14	1385	2 sets	40 mm: 8 sets 80 mm: 4 sets	10 mm: 1 set
RO1-017 - ROLLEREXTRACABGUNHILUX		127.50	127.50	1385	2 sets	40 mm: 8 sets 80 mm: 4 sets	10 mm: 1 set
RO1-018 - KZN 2000 HILUX							
RO1-019 - ROLLERJDECKGUN 1588							
RO1-020 - ROLLERJDECKGUN-1630	127.42	132.50	132.50	1425	4 sets	See figure 19.	10 mm: 1 set
RO1-021 - ROLLERT60LDV	121.82	148.39	153.50	1405		40 mm: 8 sets 80 mm: 4 sets	10 mm: 1 set
RO1-022 - ROLLER-LDV-T60-SHORT	123.68	151.65	158.99	1405	4 sets	40 mm: 8 sets 80 mm: 4 sets	10 mm: 1 set
RO1-023 - ROLLERCOVERMUSSO	128.47	141.00	141.00	1425	4 sets	See figure 19.	10 mm: 1 set
RO1-024 - ROLLER-MUSSO-SHORT	126.80	132.49	132.50	1425	4 sets	See figure 19.	10 mm: 1 set
RO1-025 - D22 NAVARA 1396 ST-R				1260	4 sets	40 mm: 8 sets 80 mm: 4 sets	10 mm: 1 set
RO1-026 - ROLLERD22NAVARA-1485cm				1290	4 sets	40 mm: 8 sets 80 mm: 4 sets	10 mm: 1 set
RO1-027 - ROLLERNP300 2016+				1325	4 sets	40 mm: 8 sets 80 mm: 4 sets	10 mm: 1 set
RO1-028 - ROLLERNP300 2016+ Sportsbars							
RO1-029 - ROLLERNP3002021	135.73	140.83	134.20	1340	4 sets	40 mm: 8 sets 80 mm: 4 sets	30 mm: 1 set
RO1-030 - ROLLERNP3002021SPORTSBARS							
RO1-031 - ROLLERRANGERPJPK	120.44	123.00	123.00	1330	4 sets	40 mm: 8 sets 80 mm: 4 sets	10 mm: 1 set
RO1-032 - RANGERPKSPACECAB	113.50	113.50	113.50	1330	4 sets	40 mm: 8 sets 80 mm: 4 sets	10 mm: 1 set



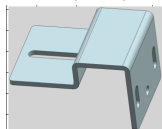
RO1-033 - ROLLERRAM1500EXPRESS7				1500	4 sets	40 mm: 8 sets	10 mm: 1 set
RO1-034 - ROLLERRAM5.8							
RO1-035 - ROLLERRAM1500QUAD63							
RO1-036 - ROLLERRANGEREXTRACAB	120.92	122.50	122.50	1385	4 sets	40 mm: 8 sets 80 mm: 4 sets	10 mm: 1 set
RO1-037 - ROLLERMY22RANGER	122.58	137.41	149.53	1355	2 sets	See figure 19.	25 mm: 1 set
RO1-038 - MY22RANGER EXTRA CAB	115.18	137.41	149.53	1355	2 sets	See figure 19.	25 mm: 1 set
RO1-039 - ROLLERRANGER	120.59	123.00	123.00	1385	4 sets	40 mm: 8 sets 80 mm: 4 sets	10 mm: 1 set
RO1-040 - ROLLER09MLTRITON				1405	2 sets	40 mm: 8 sets	
RO1-041 - ROLLERTRITONMNCOVER	121.35	123.00	123.00	1325	2 sets	40 mm: 8 sets 80 mm: 4 sets	10 mm: 1 set
RO1-042 - ROLLERMQTRITON				1405	2 sets	40 mm: 8 sets	30 mm: 1 set
RO1-043 - ROLLERD22NAVARA-1396							
RO1-044 - ROLLERCOVER MY22 AMAROK				1335		See figure 19.	25 mm: 1 set
RO1-045 - ROLLERCOVER AMAROK with sailplane				1330		See figure 19.	10 mm: 1 set

## FIGURE 19

R01-007 (8 sets)



R01-020 (6 sets)



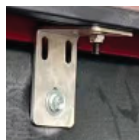
R01-037, 038, 044 (2 sets individually)



R01-023, 024



(2 sets)



(4 sets)

R01-45 (6 sets)







