



EXHAUST FITMENT INSTRUCTIONS

Welcome to PPD Performance!

We appreciate the purchase and hope you enjoy your new exhaust!!!

These instructions will guide you through the installation process.

The following are the steps we are going to take you through on your installation journey.

1. Unbox exhaust. Take time to marvel at its glory.
2. Lay exhaust down in right order checking its line against the original
 - I. We will specify the order later
 - II. Compare to your currently installed exhaust
3. Remove old exhaust
4. Fit new exhaust
5. Start from the rear forward,
 - I. If turbo gasket is not supplied, reuse OEM gasket
 - II. Make sure to use gasket glue at all points
 - III. Do not tighten until all parts are on
 - IV. Fit-up remaining exhaust parts
 - V. Tighten up all exhaust parts
6. Enjoy
7. We love customer videos so when everything is bolted up, give it a rev or take it for a drive and send through your best videos!

Note: If there are ever any issues with installation, we are here to help.

Take a video / a couple of photos and email them to us.

We will help you resolve the issue at no cost to yourself!

sales@ppdperformance.com.au



www.ppdperformance.com.au



3/102 Norma Rd, Myaree 6154





EXHAUST FITMENT INSTRUCTIONS

GENERAL TIPS

Before we start, here are a few general tips to use along the way:

1. Never force a bolt, you will regret it
 - Use Loctite 8040 'Freeze and Release' liberally on turbo studs and any overly tight bolt
 - If in doubt, more Loctite, leave for 2 minutes to soak, try again
2. Never force a bolt, you will regret it.
 - This goes double for turbo studs; you do NOT want to snap one
- 3.

Tools required

- Loctite LB 8040 Freeze and Release
- Gasket Glue (Gasket Cement)
- A set of spanners with suitable extension pieces

sales@ppdperformance.com.au



www.ppdperformance.com.au



3/102 Norma Rd, Myaree 6154

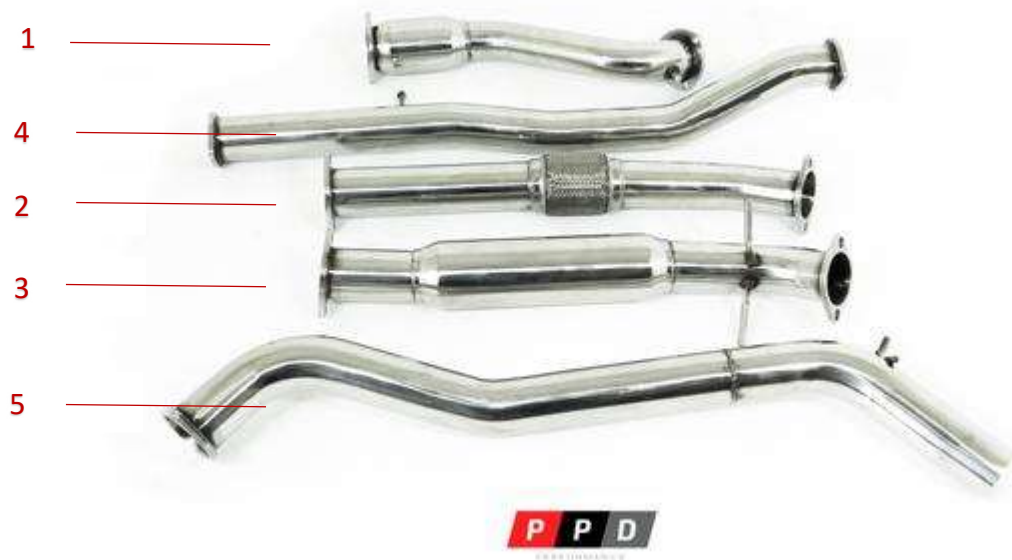




EXHAUST FITMENT INSTRUCTIONS

FITMENT

The following is a diagram of how the exhaust parts will bolt together, ordered from 1 being the turbo dump pipe, to 99 being the last piece... your exhaust probably doesn't have 99 pieces so the biggest number is the last piece 😊.



sales@ppdperformance.com.au



www.ppdperformance.com.au



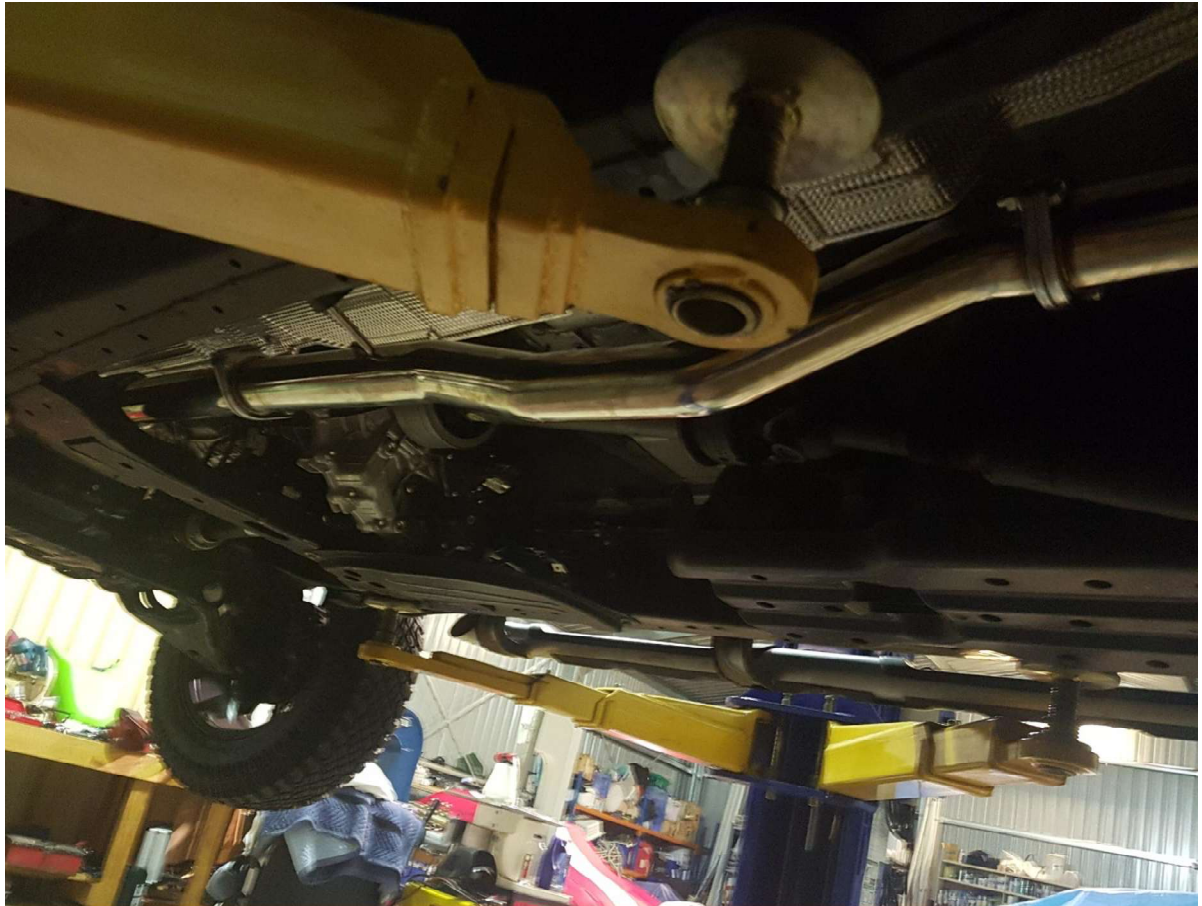
3/102 Norma Rd, Myaree 6154



EXHAUST FITMENT INSTRUCTIONS

Exhaust Specific Tricks

1. Exhaust part number 4, has its 'dip' angled downwards as shown below:



REAR OF CAR →

sales@ppdperformance.com.au



www.ppdperformance.com.au



3/102 Norma Rd, Myaree 6154





EXHAUST FITMENT INSTRUCTIONS



REAR OF CAR →

sales@ppdperformance.com.au



www.ppdperformance.com.au



3/102 Norma Rd, Myaree 6154





EXHAUST FITMENT INSTRUCTIONS



REAR OF CAR →

sales@ppdperformance.com.au



www.ppdperformance.com.au



3/102 Norma Rd, Myaree 6154





EXHAUST FITMENT INSTRUCTIONS



REAR OF CAR →

sales@ppdperformance.com.au



www.ppdperformance.com.au



3/102 Norma Rd, Myaree 6154





EXHAUST FITMENT INSTRUCTIONS

sales@ppdperformance.com.au



www.ppdperformance.com.au



3/102 Norma Rd, Myaree 6154

