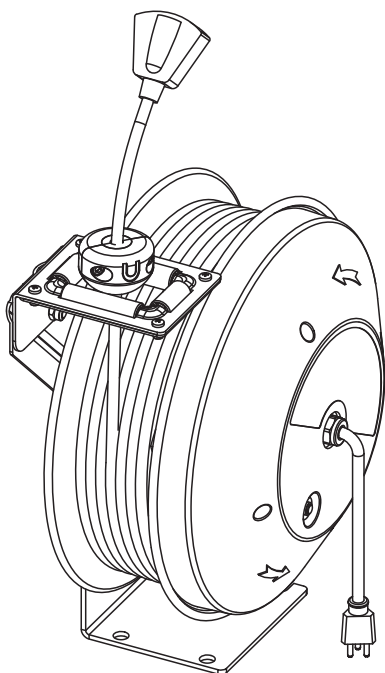
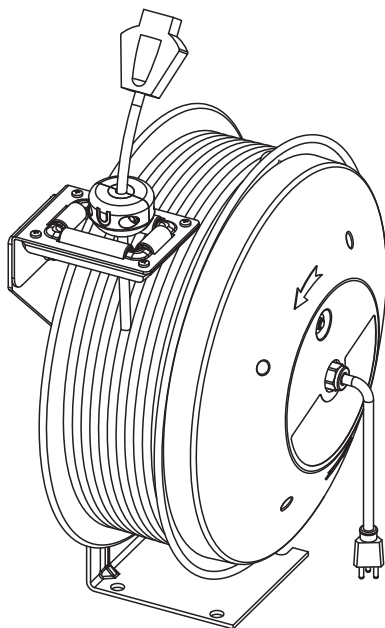




Cord Reel Instruction Manual



CR805



CR815



WARNING:

Read carefully and understand all **INSTRUCTIONS** before operating. Failure to follow the safety rules and other basic safety precautions may result in serious personal injury. Save these instructions in a safe place and on hand so that they can be read when required. Keep these instructions to assist in future servicing.



GENERAL SAFETY REGULATIONS



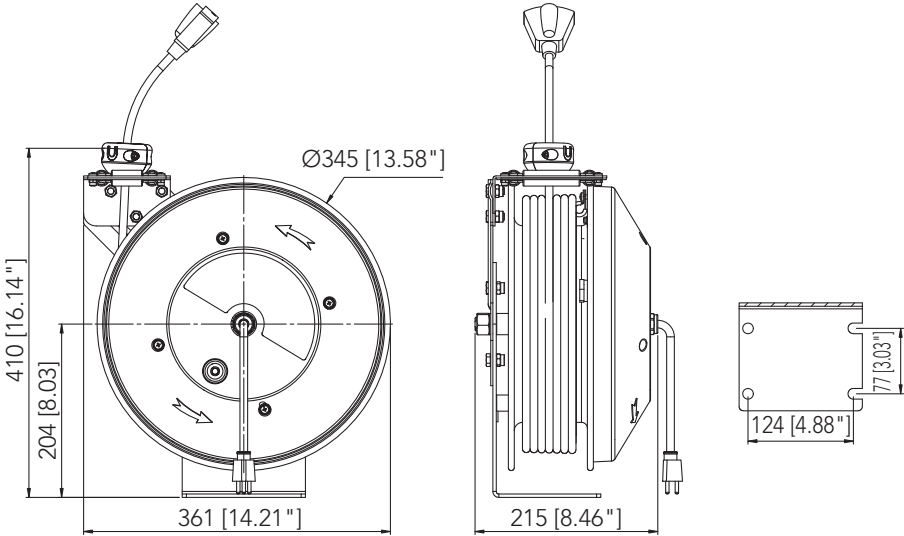
WARNING: The warnings, cautions, and instructions discussed in this instruction manual cannot cover all possible conditions or situations that could occur. It must be understood by the operator that common sense and caution are factors that cannot be built into this product, but must be supplied by the operator.

1. Ensure that only the qualified electrician can install/services this cable reel. And it must not be permitted by children or unskilled persons.
2. Ensure that power supply voltage does not exceed maximum voltage rating of reel.
3. Ensure that reel is properly installed before connecting to power supply.
4. Ensure that all electrical power is removed from reel before servicing.
5. Check for frayed and broken wires before each use.
6. When pull electrical cable from the reel always grasp the electrical cable itself, not the work device.
7. Remove power from the reel immediately when any malfunction occurs.
8. Never remove, tamper with or cut out the safety devices fitted by the manufacture.
9. Do not use the reel in damp or wet conditions. Keep the work area is clean. Avoid put in sundries in cable reel.
10. Nor for in hazardous location or above hazardous location use.

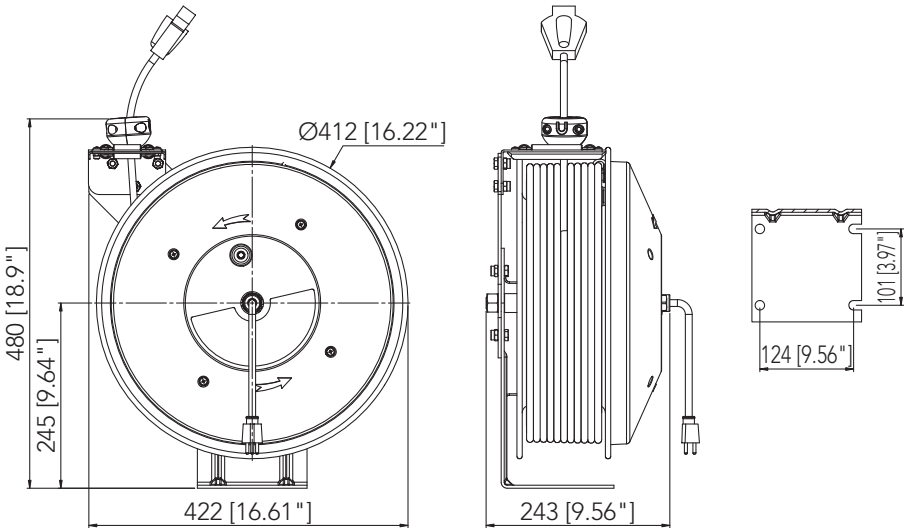
TECHNICAL DETAILS

Item No.	Type	Cord Length	Volt	Cord Specification	Ampere
CR805.05	SJTOW	50ft. / 15m	125V	3C 12AWG	15A
CR815.04	SJTOW	80ft. / 25m	125V	3C 12AWG	15A
CR815.05	SJTOW	100ft. / 30m	125V	3C 14AWG	13A

Note: SJTOW is oil and waterproof.



CR805

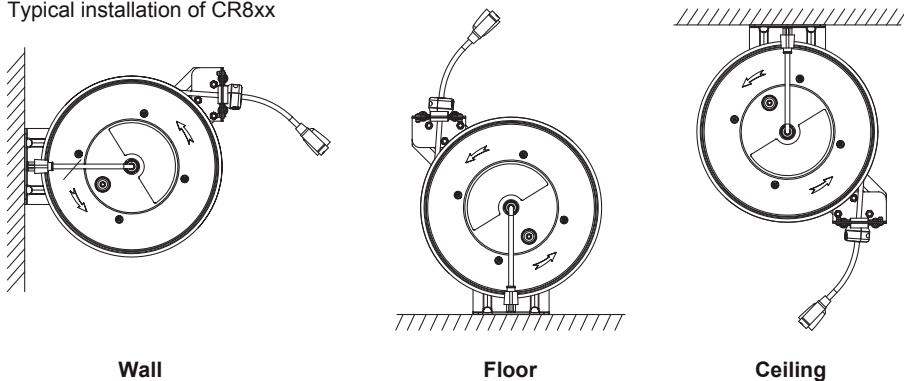


CR815

INSTALLATION

1. The reel must be installed in premises conforming to current regulation and standards covering electrical systems and work environments.
2. Secure the reel to the wall and the ceiling according to the installation diagrams. Using screw anchors or suitable screws which must be fitted in the holes in the brackets.
3. If it is necessary to adjust the position of the stopper, first pull the cable out of the guide frame for a distance and lock the drum. Loosen the stopper with wrench, adjust to the required position, and lock the screw.
4. The reel is supplied with a hose guide roller bracket. The bracket position may be changed depending on the reel mounting position. Figure 2 shows "Typical Mounting Positions". If bracket position needs to be changed, do the following:
 - (1) Pull out some cable and let reel latch.
 - (2) Remove the bolts that attach the guide roller bracket to the support post.
 - (3) Rotate guide roller bracket to correct position, replace bolts and tighten.

Typical installation of CR8xx



OPERATION

1. Check reel for correct operation by slowly pulling out cable. A "clicking" noise will be heard every half revolution of the drum.
2. To latch the reel, pull out the cable and allow it to retract after hearing the first second or third "click".
3. To unlatch, slowly pull out the cable until the "clicking" noise stops, then let cable retract until the bumper block rests against the cable guide.
4. When over loading, the supplementary protector will cut off automatically, then push the button until restore.

Note: To avoid damage to the reel, always hold on to the cable while it is rewinding.

MAINTENANCE

1. Make sure the cable is in proper working order and that the insulation is not cut or worn as this could represent a hazard and jeopardize operation.
2. Clean the cable with a cloth dipped in warm water to remove dirt or deposits and ensure correct rewinding.
3. Do not use detergents or solvents which could prove incompatible with cable-winder materials.
4. If the event of having to perform maintenance on the electrical, mechanical parts or replace the cable, contact an authorized after-sale service center.
5. Dismantling of the unit by unskilled personal could prove hazardous; the risk involved mainly concern the preloaded springs.

LIMITED WARRANTY

1. The manufacturer warrants this cable reel against defects in material and craftsmanship, for a period of 12 months from date of purchase.
2. Manufacturer's liability is limited to replacement or repair of defective material within the warranty period, when returned freight prepaid to the distributor or their designated service depot.
3. The warranty does not cover damage caused by accident, misuse or faulty installation.
4. The reel must be installed and maintained in compliance with the instructions.

WARNING

Your risk from these exposures varies, depending on how often you do this type of work. To reduce your exposure to these chemicals: work in a well ventilated area, and work with approved safety equipment, such as those dust masks that are specially designed to filter out microscopic particles.

OTHERS

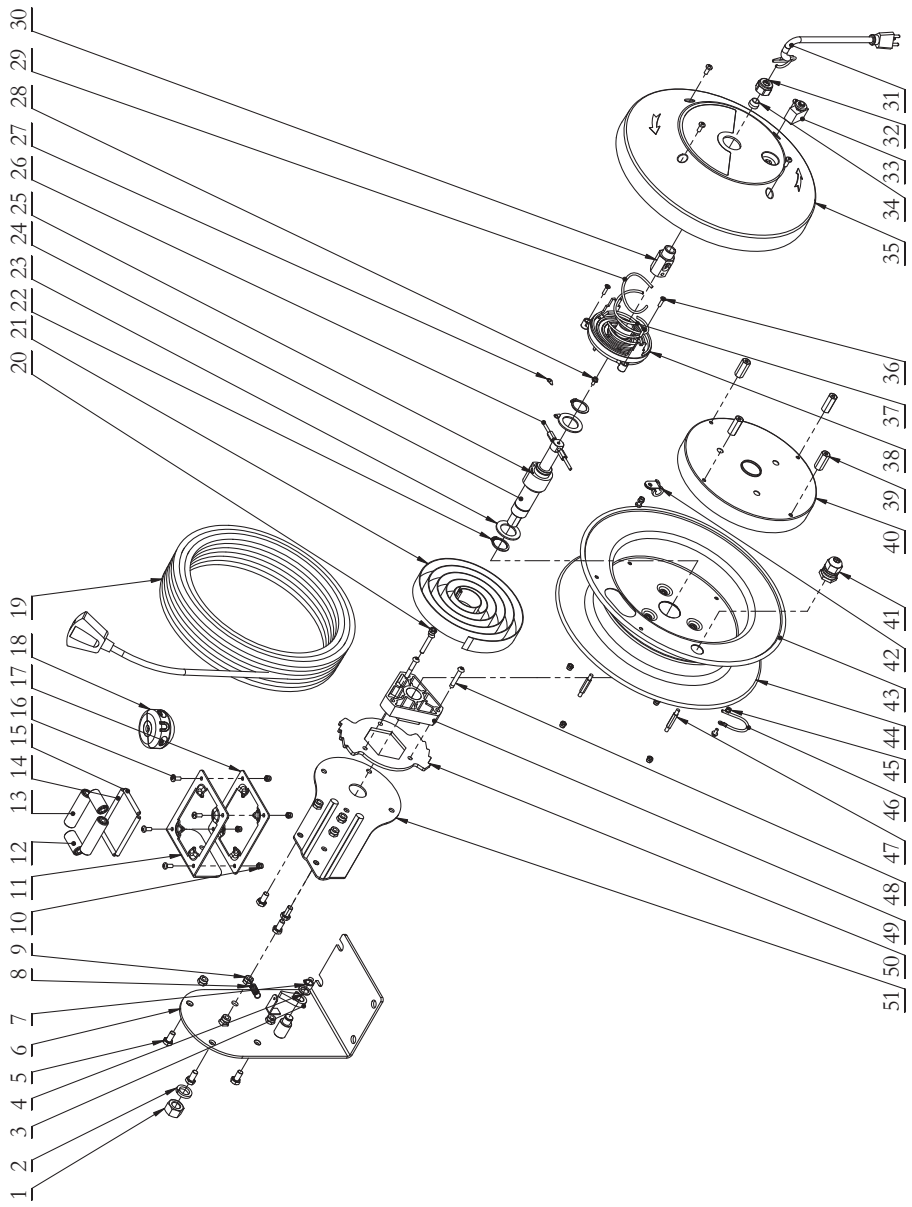
Transportation

During the transportation, the products should be protected from direct sunlight and rain. It is forbidden to contact with corrosive substances and mix loading.

Storage

1. Storage temperature range: - 4°F (- 20°C) to 140°F (60°C)
2. Storage period: 6 months.
3. Storage conditions: the warehouse shall be well ventilated, avoid direct sunlight and rain, and shall not contact with corrosive substances.

EXPLODED AND PARTS LIST CR805 SERIES

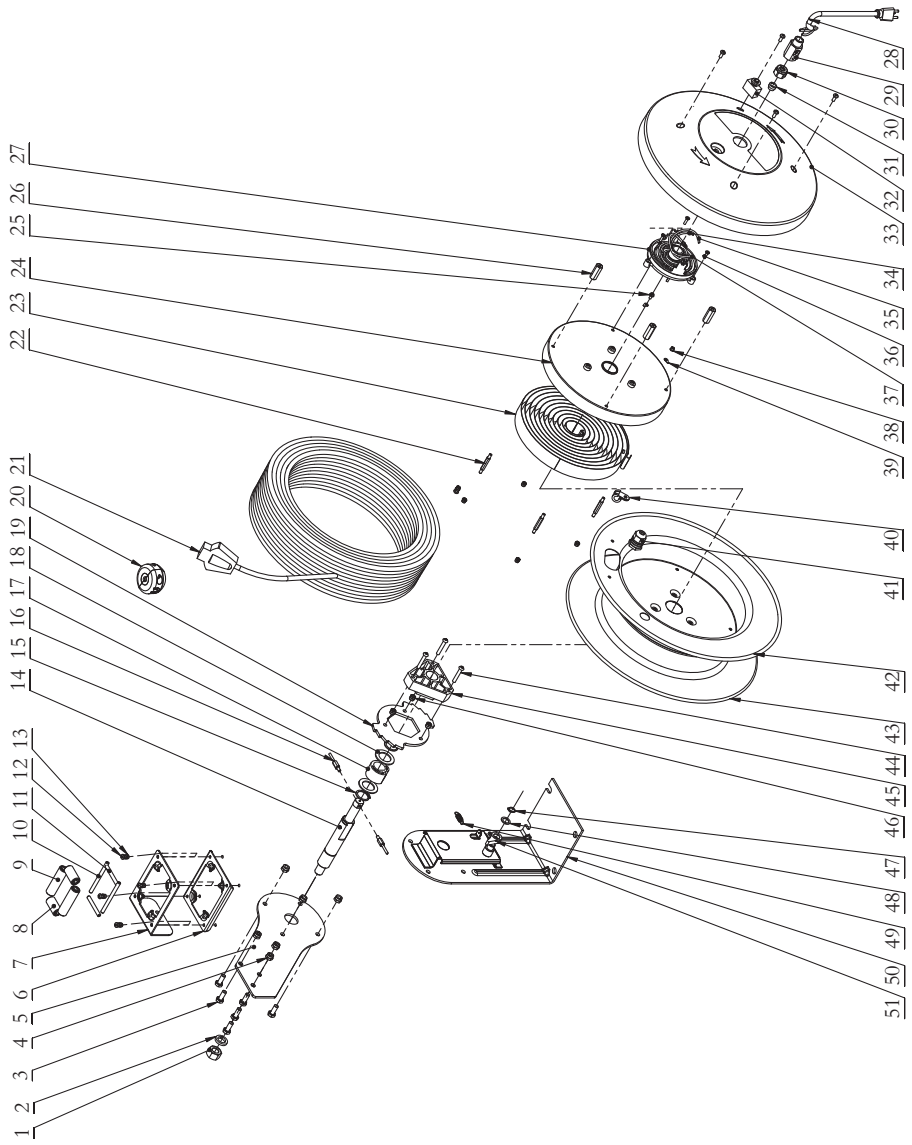


E4

- 1
- 2
- 3
- 4
- 5
- 6
- 7
- 8
- 9
- 10
- 11
- 12
- 13
- 14
- 15
- 16
- 17
- 18
- 19
- 20
- 21
- 22
- 23
- 24
- 25
- 26
- 27
- 28
- 29
- 30
- 31
- 32
- 33
- 34
- 35
- 36
- 37
- 38
- 39
- 40
- 41
- 42
- 43
- 44
- 45
- 46
- 47
- 48
- 49
- 50
- 51

Part No.	Description	Qty	Part No.	Description	Qty
1	Nut	1	27	Grounding sign	2
2	Washer	1	28	Screw assembly	2
3	Ratchet	1	29	Connecting cord	1
4	Washer	1	30	Cable connector	1
5	Hexagon bolt	7	31	Lead-in cord assembly	1
6	Base assembly	1	32	Locking nut	1
7	Shaft ring	1	33	Protector	1
8	Tension spring	1	34	Compression plug	1
9	Nut	7	35	Protecting cover	1
10	Nut	9	36	Screw	3
11	Guide frame	1	37	Connecting cord	1
12	Short roller	2	38	Plate assembly	1
13	Long roller	2	39	Connecting column	4
14	Long guide axle	2	40	Spring assembly	1
15	Short guide axle	2	41	Cord connector	1
16	Screw	9	42	Hoop	1
17	Guide platen	1	43	Drum (With holes)	1
18	Cord Stopper assembly	1	44	Drum	1
19	Cord assembly	1	45	Screw	1
20	Nut	3	46	Ground cord	1
21	Spiral spring	1	47	Double end stud	4
22	Shaft ring	2	48	Screw	3
23	Washer	2	49	Plastic triangle sleeve	1
24	Main axle	1	50	Ratchet plate	1
25	Spring buckle	1	51	Guide arm	1
26	Screw	2			

EXPLODED AND PARTS LIST CR815 SERIES



Part No.	Description	Qty	Part No.	Description	Qty
1	Nut	1	27	Plate assembly	1
2	Washer	1	28	Lead-in cord assembly	1
3	Hexagon screw	8	29	Cord connector	1
4	Nut	7	30	Locking nut	1
5	Guide arm	1	31	Compression plug	1
6	Guide platen	1	32	Protector	1
7	Guide frame	1	33	Protecting cover	1
8	Short roller	2	34	Connecting cord	1
9	Long roller	2	35	Connecting cord	1
10	Long guide axle	2	36	Screw	3
11	Short guide axle	2	37	Ground cord	1
12	Screw	9	38	Screw	1
13	Nut	9	39	Grounding sign	1
14	Main axle	1	40	Hoop	1
15	Shaft ring	2	41	Cord connector	1
16	Screw rod	2	42	Drum(With holes)	1
17	Spring buckle	1	43	Drum	1
18	Washer	2	44	Screw	3
19	Ratchet plate	1	45	Plastic triangle sleeve	1
20	Cord stopper assembly	1	46	Nut	3
21	Cord assembly	1	47	Shaft ring	1
22	Double end stud	4	48	Washer	1
23	Spiral spring	1	49	Tension spring	1
24	Spring assembly	1	50	Base assembly	1
25	Screw assembly	2	51	Ratchet	1
26	Connecting column	4			



Goodyear (and Winged Foot Design) and Blimp Design are trademarks of
The Goodyear Tire & Rubber Company used under license by
Intradin (Shanghai) Machinery Co.Ltd., China.
Copyright 2022 The Goodyear Tire & Rubber Company.