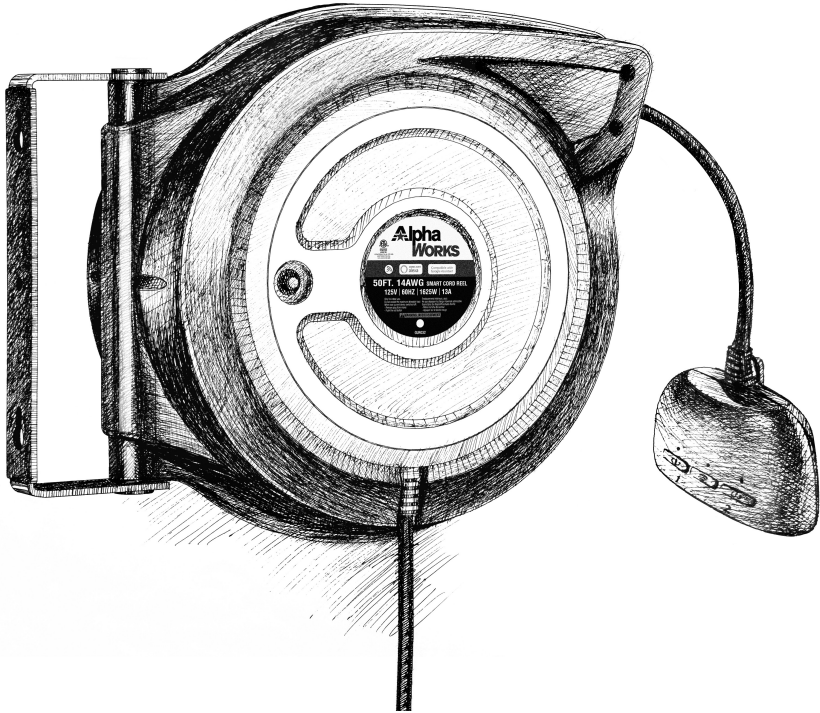


Alpha WORKS



ALPHAWORKS SMART CORD REEL USER MANUAL



GENERAL SAFETY REGULATIONS

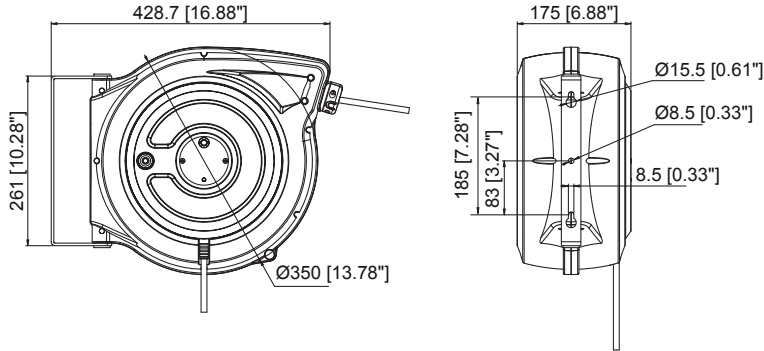


WARNING: The warnings, cautions, and instructions discussed in this instruction manual cannot cover all possible conditions or situations that could occur. It must be understood by the operator that common sense and caution are factors that cannot be built into this product, but must be supplied by the operator.

1. Keep the work area clean and dry. Damp or wet work areas can result in injury.
2. Keep children away from work area. Do not allow children to handle this product.
3. Use the right tool for the job. Do not attempt to force small equipment to do the work of larger industrial equipment. There are certain applications for which this equipment was designed. It will do the job better and more safely at the capacity for which it was intended. Do not modify this equipment, and do not use this equipment for a purpose for which it was not intended.
4. Check for damaged parts. Before using this product, carefully check that it will operate properly and perform its intended function. Check for damaged parts and any other conditions that may affect the operation of this product. Replace damaged or worn parts immediately.
5. Do not overreach. Keep proper footing and balance at all times to prevent tripping, falling, back injury, etc.
6. DO NOT use the equipment when tired or under the influence of drugs, alcohol, or medication. A moment of inattention while operating this equipment may result in serious personal injury.
7. Ensure that only the qualified electrician can install/services this cord reel. And it must not be used by children or unskilled persons.
8. Ensure that power supply voltage does not exceed maximum voltage rating of reel.
9. Ensure that reel is properly installed before connecting to power supply.
10. Ensure that all electrical power is removed from reel before servicing.
11. Check for frayed and broken wires before each use.
12. When pull electrical cord from the reel always grasp the electrical cord itself, not the work device.
13. Remove power from the reel immediately when any malfunction occurs.
14. Never remove, tamper with or cut the safety devices fitted by the manufacturer.

TECHNICAL DETAILS

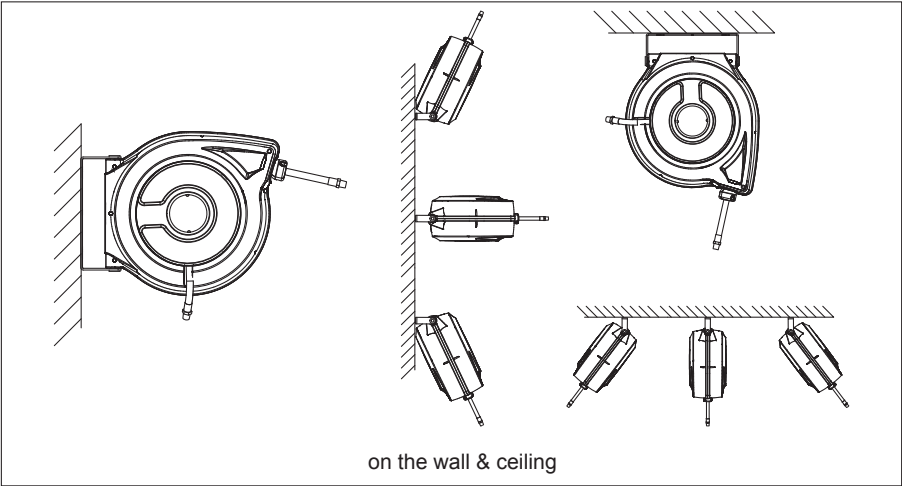
SKU#	Specification of Cord				Volt (V)	Ampere (A)
	AWG	Number of Core	Type	Length (ft)		
GUR032	14	3	SJTOW	50	125	13



Welcome to the First ever Alex Capable Smart Extension Cord Reel.

INSTALLATION

1. Unpack and inspect reel for damage. Turn by hand to check for smooth operation. Check for completeness.
2. The cord reel must be installed in premises conforming to current regulation and standards covering systems and work environments.
3. Secure the cord reel to the wall or the ceiling according to the installation diagrams. Using screw anchors or suitable screws which must be fitted in the holes in the brackets.
4. Adjust the cord stopper to the suitable position when required.



This cord reel comes with a Wi-Fi Outlet with two sockets. It's compatible with Amazon Alexa and Google Assistant for voice control. Connect devices to the smart outlet by using the free Smart Life App on your phone and enjoy hands-free lifestyle.

OPERATION

1. Check reel for correct operation by slowly pulling out the cord.
2. To latch the reel, slowly pull out the cord to any point, relax the cord to stop.
Note: it can not exceed the back end mark when the hose is pulled out.
3. To unlatch the reel, slowly pull the cord after relax, and then let the cord retract until the cord stop rests against the cord guide.
4. When over loading, the thermal cut-out will cut off automatically, then push the red button until restore.
Note: To avoid damage to the reel, always hold on to the cord while it is rewinding.

CHECKLIST BEFORE USING THE DEVICE

1. Your smart phone or tablet should have connected a 2.4G WiFi with internet.
2. The device only support 2.4G network. Please don't connect to a 5G network or hybrid network.
3. Enter correct WiFi passwords. Make sure that your WiFi SSID and passwords don't contain special characters.
4. During pairing process, make sure that your IOS or Android device and smart socket within the range of the router.
5. Please pay attention to the maximum power that this socket supports. It's strictly prohibited to use the superpower load.

USE APP

1. Download Smart Life app

You can scan the QR code below to download the Smart Life App:



You can also search "Smart Life" in either App Store or Google Play to install the app.

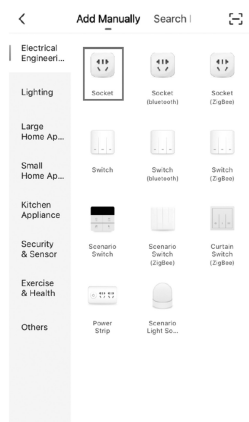
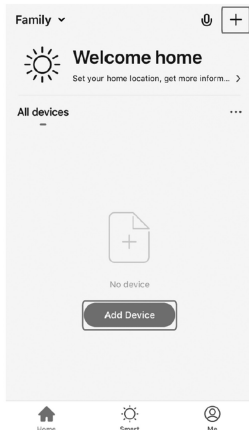
2. Register

If you don't have an App account, please register an account first.

- 2.1 Tap to enter registration page, select your country code. Enter the mobile number and tap "Obtain verification code".
- 2.2 Then enter the verification code from the message, and enter the password, tap "Confirm" to finish your registration.

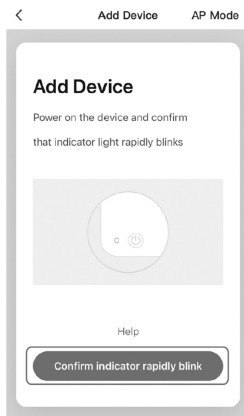
3. Add device

- 3.1 Enter the App, tap “Add Device” or “+”, then select Electrical Engineering “Socket”.
- 3.2 Please pressing WiFi button over 5 seconds and make sure the WiFi indicator flashes quickly.



- 3.3 Tap to go on to network connecting. Select the Wi-Fi under which device is working, enter password and tap “ok” to enter network connection process.
- 3.4 After connecting, you could name the device you want, then the smart device will be shown on the home page.

Rename what you want by click the icon.

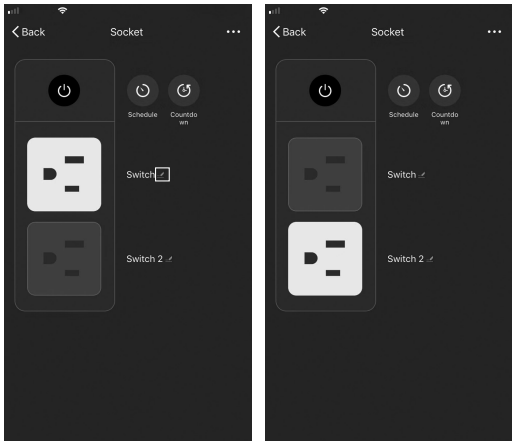


4. Control device

4.1 Tap to enter it's control page, click on the button for ON / OFF operations. Each socket can be independently controlled and customized through the app. And individually control each socket using sepatate buttons.

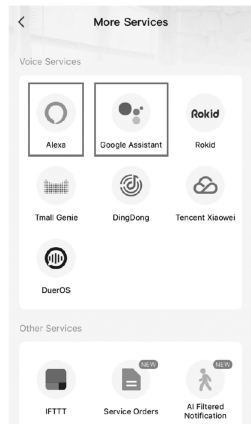
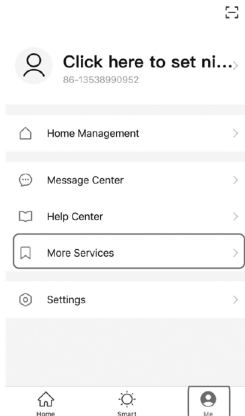
Rename what you want by click the icon.

4.2 In the control page you could click on the Schedule, Timer etc., for regularly operations.



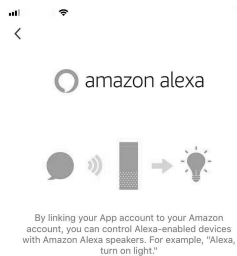
HOW TO WORK WITH ALEXA AND GOOGLE HOME

Click and go to the "Me" page. Get the corresponding detailed operation instructions in "More Services".



How to connect Alexa? Click the link.

You could get more related operations and the help of common problems on the APP's "Me" page. You could also contact the seller to get a better product use experience!



MAINTENANCE

1. Make sure the Cord is in proper working order.
2. Clean the Cord with a cloth dipped in warm water to remove dirt or deposits and ensure correct rewinding.
3. Do not use detergents or solvents which could prove incompatible with cord-winder materials.
4. Dismantling of the unit by unskilled personal could prove hazardous; the risk involved mainly concern the preloaded springs.

LIMITED WARRANTY

1. The manufacturer warrants this Cord reel against defects in material and craftsmanship,- for a period of 12 months from date of purchase.
2. Manufacturer' s liability is limited to replacement or repair of defective material within the warranty period,when returned freight prepaid to the distributor or their designated service depot.
3. The warranty dose not cover damage caused by accident,misuse or faulty installation.
4. The reel must be installed and maintained in compliance with the instructions.

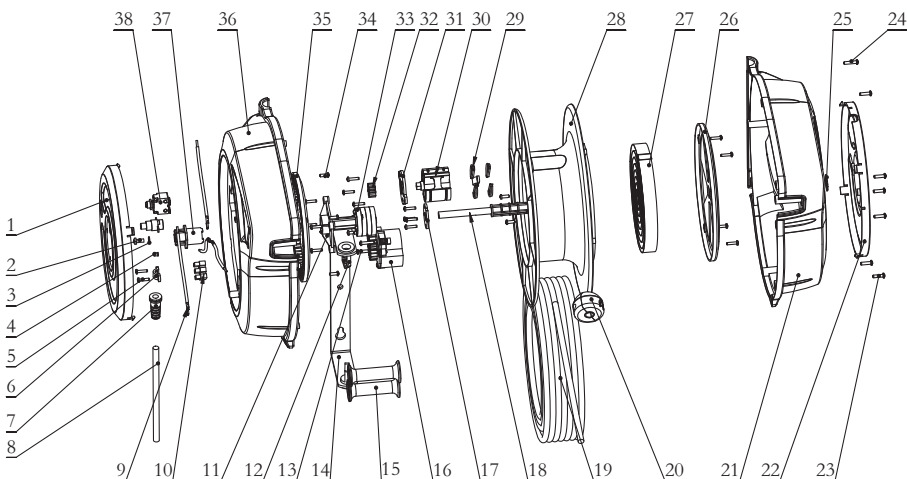
TROUBLESHOOTING

Failure: The cord can't be Conduction

Possible cause: Overload or overheat protection

Corrective Action: Press the red button on the side cover

EXPLODED AND PARTS LIST



Part No.	Description	Q'ty	Part No.	Description	Q'ty
1	Left side cover	1	20	Stop block assembly	1
2	Screws M5x12	1	21	Right shell	1
3	Washer	1	22	Right side cover	1
4	Indicator light	1	23	Screws PT4.5x16	7
5	Screws ST3.5x16	19	24	Screws ST4.2x22	2
6	Cord clamp	2	25	Shaft ring	1
7	Cord protective sleeve	1	26	Spring cover	1
8	Import cord	1	27	Spring	1
9	Wireway	4	28	Drum	1
10	Connector	1	29	O-ring	4
11	Support plate	1	30	Buffer	1
12	Fixed pin	2	31	Cover	1
13	Screws PT4.0x20	3	32	Gear	1
14	Base	1	33	Slip ring	1
15	Roller	2	34	Screws PT4.0x12	6
16	Stop at any point assembly	1	35	Gear	1
17	Baffle	1	36	Left shell	1
18	Supporting shaft	1	37	Support sleeve	1
19	Cord	1	38	Thermostat	1



Great Circle USA
 Support Line: 1-866-493-0524
help@greatcircleus.com
www.greatcircleus.com