

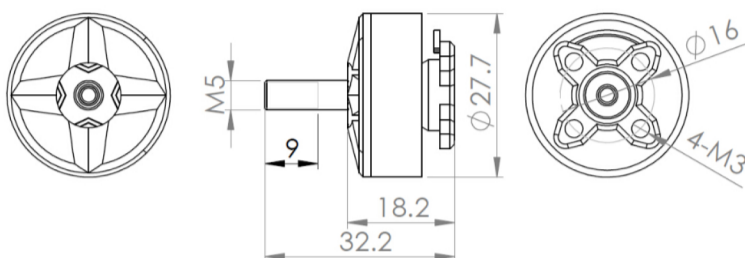


Samguk Series wei

1750KV / 2300KV / 2600KV

Wei

DESCRIPTION



Item Name: Wei 2207

Specification:

KV.....2300KV
 Configuration.....NP
 Stator Diameter.....22.0mm
 Stator Length.....7.0mm
 No.of Cells(Lipo).....3-4S
 Max Continuous current(A).....36.20A
 Max Continuous Power(W).....579.2W
 Internal resistance.....0.06

MOTOR TECHNICAL DATA:

VOLTAGE	NO LOAD		ON LOAD				LOAD TYPE
	CURRENT	SPEED	CURRENT	Pull	Power	EEP	
V	A	rpm	A	g	W	%	Battery/prop
12	1.3	27600	5.1	200	61.2	3.3	LiPox3/4045x3
			12.7	400	152.4	2.6	
			18.2	530	218.4	2.4	
			5.4	250	64.8	3.9	LiPox3/5045x3
			13.7	500	164.4	3.0	
			25.8	760	309.6	2.5	
			3.7	200	44.4	4.5	LiPox3/5040x3
			9	400	108.0	3.7	
			17.2	660	206.4	3.2	
			5.1	200	61.2	3.3	LiPox3/5040x4
			11.3	400	135.6	2.9	
			21.2	650	254.4	2.6	
			5.1	200	61.2	3.3	LiPox3/5045
			11.4	400	136.8	2.9	
			17.1	580	205.2	2.8	
			16	1.4	36800	6.9	300
18.1	600	289.6				2.1	
27.1	820	433.6				1.9	
8.4	400	134.4				3.0	LiPox4/5045x3
23.4	800	374.4				2.1	
36.2	1100	579.2				1.9	
4.6	250	73.6				3.4	LiPox4/5040x3
18.5	500	296.0				1.7	
29.2	760	467.2				1.6	
6.1	300	97.6				3.1	LiPox4/5040x4
14.6	600	233.6				2.6	
30.3	970	484.8				2.0	
7.0	300	112.0				2.7	LiPox4/5045
14.6	600	233.6				2.6	
23.6	940	377.6				2.5	

KV.....2600KV
 Configuration.....NP
 Stator Diameter.....22.0mm
 Stator Length.....7.0mm
 Motor Dimensions(Dia.*Len).....Φ27.7×18.2mm
 Weight (g).....34.71g
 No.of Cells(Lipo).....3-4S
 Max Continuous current(A).....44.0A
 Max Continuous Power(W).....704.0W
 Internal resistance.....0.05

MOTOR TECHNICAL DATA:

VOLTAGE	NO LOAD		ON LOAD				LOAD TYPE
	CURRENT	SPEED	CURRENT	Pull	Power	EEP	
V	A	rpm	A	g	W	%	Battery/prop
12	1.6	31200	5.7	200	68.4	2.9	LiPox3/4045x3
			13.7	400	164.4	2.4	
			22.7	600	272.4	2.2	
			8	300	96.0	3.1	LiPox3/5045x3
			19.6	600	235.2	2.6	
			31	800	372.0	2.2	
			5.4	250	64.8	3.9	LiPox3/5040x3
			13.1	500	157.2	3.2	
			22.1	750	265.2	2.8	
			5.2	250	62.4	4.0	LiPox3/5040x4
			13	500	156.0	3.2	
			24.7	780	296.4	2.6	
			5	250	60.0	4.2	LiPox3/5045
			12.5	500	150.0	3.3	
			20.1	700	241.2	2.9	
			16	1.7	41600	7.7	300
18.9	600	302.4				2.0	
33.1	880	529.6				1.7	
9.6	400	153.6				2.6	LiPox4/5045x3
24.3	800	388.8				2.1	
44.0	1140	704.0				1.6	
7.8	400	124.8				3.2	LiPox4/5040x3
22.5	800	360.0				2.2	
32.7	1130	523.2				2.2	
8.0	400	128.0				3.1	LiPox4/5040x4
20.6	800	329.6				2.4	
35.0	1140	560.0				2.0	
5.0	300	80.0				3.8	LiPox4/5045
13.5	600	216.0				2.8	
29.0	1070	464.0				2.3	