

MANUFACTURERS EXTENDED WARRANTY

This product is guaranteed by Ventair Pty Ltd for 24 months from the date of purchase against faulty materials or workmanship which affects its design ability to operate. During this period if the product has a defect of this nature it will be repaired or replaced free of charge by Ventair with the same item, or a similar one of higher specifications, ON THE CONDITIONS THAT:

The buyer returns it to the seller from whom it was bought, freight paid.

The product has been bought by the user, i.e. a receipt/sales invoice is produced as a proof of purchase.

The product has not been misused or handled carelessly, installed in anyway contrary to the installation instruction, or installed in any unusually exposed or harsh environmental conditions.

This guarantee excludes liability for the discolouration of paint or plastic, or any user replacement parts. It does not confer any rights other than those expressly set out above and does not cover any claims for consequential loss or damage.

Our Goods come with guarantees that cannot be excluded under the Australian Consumer Law. You are entitled to a replacement or refund for a major failure and for compensation for any other reasonably foreseeable loss or damage. You are also entitled to have the Goods repaired or replaced if the Goods fail to be of acceptable quality and the failure does not amount to a major failure.

We reserve the right to change specification without prior warning.



SIMX is proudly distributed by Ventair Pty Ltd
4 Capital Place, Carrum Downs, 3201 VIC, AUSTRALIA
Technical Support Ph: 1300 665 926
e: info@ventair.com.au | www.ventair.com.au | www.simx.com.au
Ventair reserves the right to alter technical specifications without prior warning

260620

INSTALLATION INSTRUCTIONS



Side Draft Hand Dryer

FAN5655

PLEASE READ ALL INSTRUCTIONS CAREFULLY BEFORE STARTING THE INSTALLATION

! IMPORTANT

All installations and electrical must comply with local and national electric codes as applicable. Electrical work should only be carried out by a registered electrician

Ensure that the unit is installed on a suitably rated fused circuit with the supply isolating switch having a minimum contact separation of at least 3mm. This device should be plugged into outlet controlled by an earth leakage circuit breaker.

If the supply cord is damaged, it must be replaced by the manufacturer, its service agent or similar qualified persons in order to avoid a hazard.

Do not insert objects into the air outlets. Doing so may be hazardous and could result in electrical shock.

Do not obstruct the air inlets or outlets in any way.

Service hand dryer at regular intervals.

Do not use appliance within close proximity to water basins, tubs, showers or other vessels containing water.

Young children should be supervised to ensure that they do not hang or play with this appliance.

The appliance is not to be used by persons (including children) with reduced physical, sensory or mental capabilities, or lack of experience or knowledge, unless they have been given supervision or instruction.

Technical Specification:

Voltage:	220 – 240 VAC
Frequency:	50/60 Hz
Power:	1650 Watts
Air Speed:	95 m/s
Dimensions:	300 x 222 x 730 mm

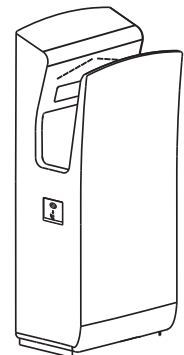
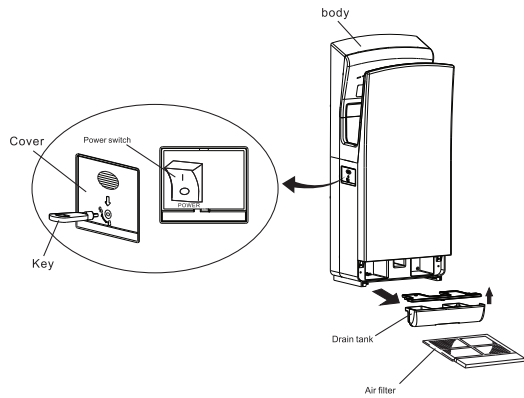
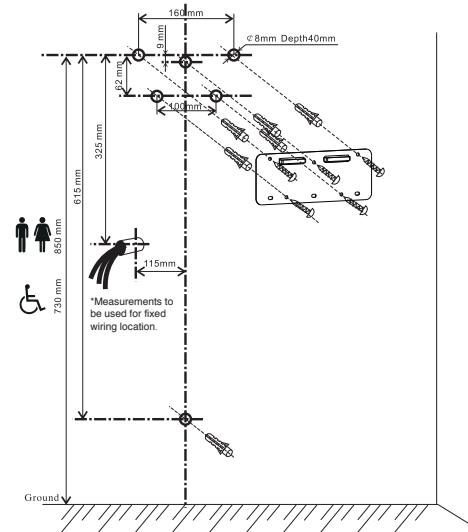
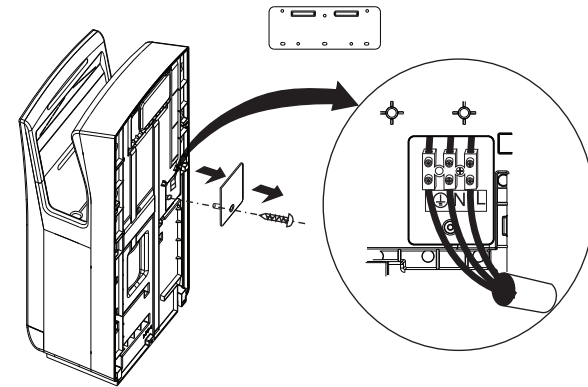
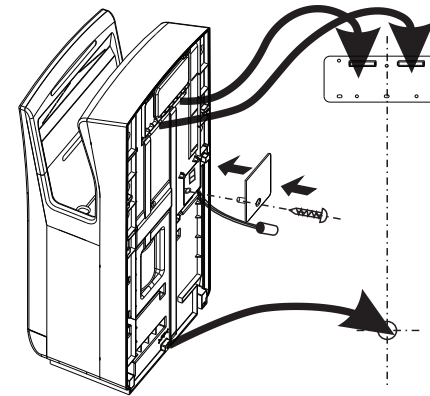
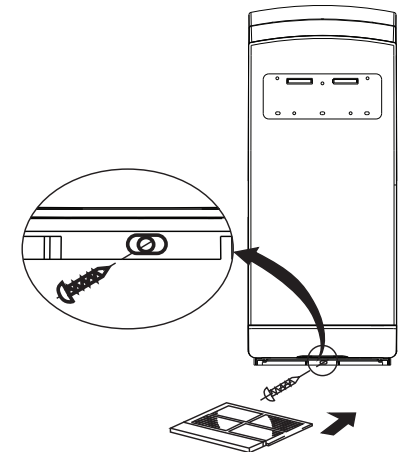


Figure A**Figure B****Figure C****Figure D****Figure E****Installation Instructions:**

Note: This unit must be fixed to a solid supporting wall and must not be mounted above shelves or over stainless steel/reflective surface counters.

To ensure the ease of installation and subsequent maintenance of this unit the horizontal distance to any adjacent wall should not be less than 200mm.

1. Unlock power switch cover and confirm power switch is in the off position (Figure A).
2. Attach mounting bracket (Figure B).
3. Remove electrical access panel and wire as per diagram (Figure C).
4. Mount hand dryer on bracket (Figure D).
5. Remove bottom air filter to access mounting hole on base of unit. Replace air filter (Figure E).
6. Plug unit into approved power point if equipped with plug.
7. Turn power switch on, return switch cover and lock into place. Check hand dryer operations.

Servicing and Maintenance

This unit must be isolated from the power supply during routine maintenance.

This unit should be serviced frequently to remove water from the drain tank drain. Clean dust or any other build up from the air filter (Figure A).

Do not attempt to disassemble unit or during cleaning hand dryer as this may void product warranty.