

# INSTALLATION & MAINTENANCE INSTRUCTIONS

FANTECHTRADE ///

**MADE FOR TRADE**

AC1209  
AC1212  
AC1215

These instructions must be read fully before commencing installation.



## 1. GENERAL

- 1.1 It is important these Installation and Maintenance Instructions are fully adhered to.
- 1.2 Full details of the unit supplied are shown on the product nameplate. If in doubt about any detail, contact FANTECH or its agents for clarification.
- 1.3 Electrical installation must be carried out by suitably qualified and competent personnel in accordance with all current statutory requirements.
- 1.4 Any declarations made by FANTECH about product installation and safety, are dependent on the air curtain being used within installations which themselves meet the requirements of the relevant Standards and Directives of your region.
- 1.5 The air curtain must be installed in a dry, sheltered position and is not suitable for operating in temperatures above 40 °C. The air curtain is not suitable in corrosive or explosive atmospheres.
- 1.6 The installer should provide easy access to the air curtain to facilitate future maintenance.
- 1.7 The installer should ensure the air curtain is adequately supported.
- 1.8 This product is not intended for use by young children or infirm persons unless they have been adequately supervised by a responsible person to ensure that they can use the product safely. Young children should be supervised to ensure that they do not play with the appliance.

## SPECIFICATIONS

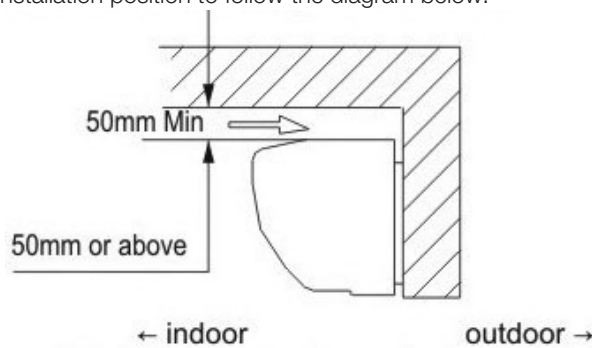
Model	Voltage (V)	Frequency (Hz)	Low Speed				High Speed			
			Current (A)	Power (W)	Outlet Velocity (m/s)	Noise (dB(A))	Current (A)	Power (W)	Outlet Velocity (m/s)	Noise (dB(A))
AC1209	230	50	0.956	220	15	54	1.2	276	18	57
AC1212	230	50	1.217	280	15	55	1.391	320	18	58
AC1215	230	50	1.522	350	12.5	54	1.896	436	14	57

## 2. INSTALLATION

▲ Important safety information

The air curtain must not be installed in an area where there is any possibility of water/moisture ingress. The air curtain must be isolated from the power supply during installation and maintenance, and must be earthed in accordance with the local regulations.

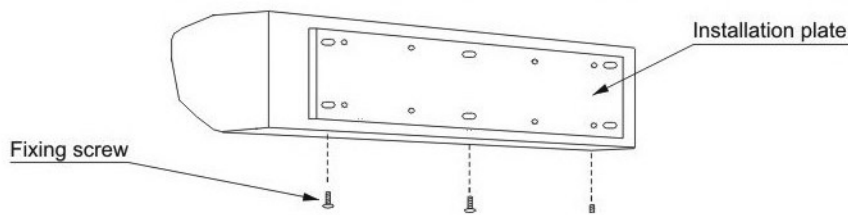
- 2.1 Upon receipt, the air curtain should be visually inspected to check for any damage.
- 2.2 Check the details on the rating plate to ensure that the correct power supply (voltage, frequency and phase) is available. An incorrect power supply will lead to permanent damage to the air curtain.
- 2.3 Supply connection is via terminal block behind centre inlet grille.
- 2.4 Means for electrical disconnections must be incorporated in the wiring installation in accordance with the relevant wiring and electrical regulations.
- 2.5 Accessories: 6 sets of bolts (M8 x 60mm), washers, spring washers, nuts.
- 2.6 Installation position to follow the diagram below:



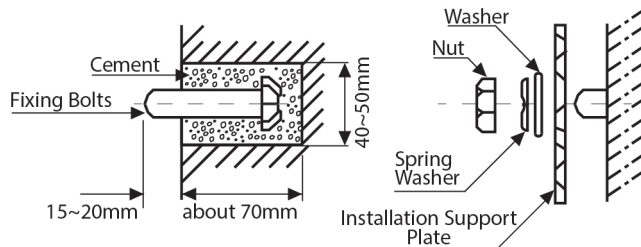
- 2.7 Coverage height: 3.5m (To install air curtain horizontally).

- 2.8 Installation on concrete wall:

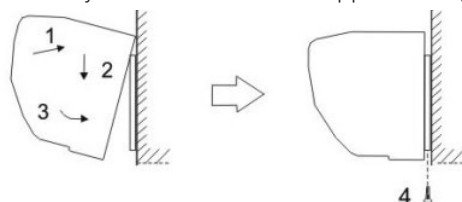
- Remove installation support plate from rear of unit by removing the 3 fixing screws. See following diagram.



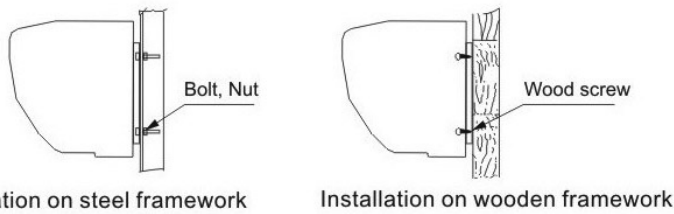
- Use Dyna bolts or equivalent to fit the Installation Support Plate to the wall



- Install the unit body onto the Installation Support Plate (see following diagram)



2.9 Other installation methods (see following diagram):



2.10 More than one air curtain unit can be used across the width of a doorway.

2.11 The recommended distance between 2 adjacent sets of air curtains to be 20-40mm.

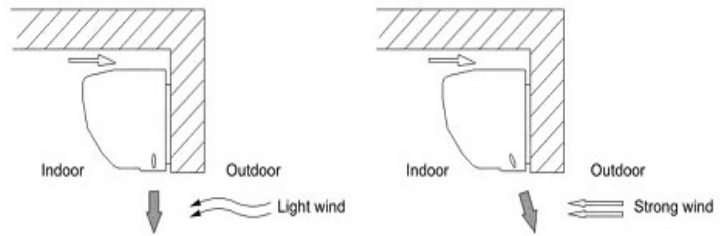
### 3. START-UP

3.1 Before power is supplied to the unit, ensure that the wiring is correct as per the connection diagram.

3.2 Check that the motor amperage draw does not exceed the nameplate rating.

3.3 To set the required speed, select Lo or Hi at the wall mounted switch.

3.4 Adjust AIR DEFLECTOR to preferred positions.



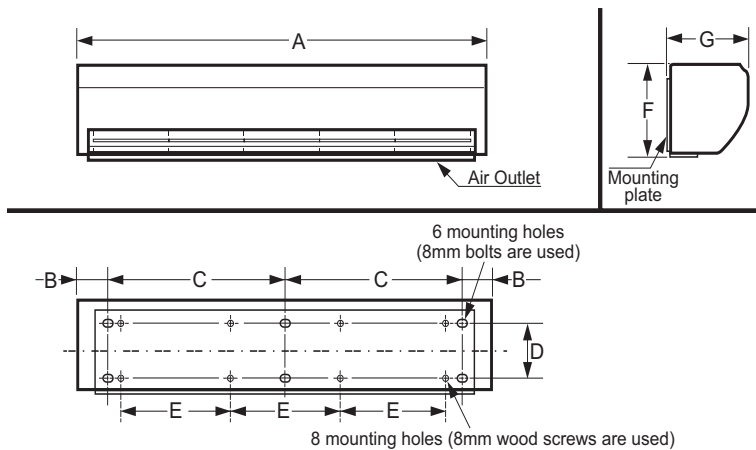
### 4. FAN MAINTENANCE

4.1 Inspection of the air curtain at least once every 12 months is recommended to ensure that the motor, fan blades, and inlet filters are clean. Any build up of dust and deposit on the blades or guards should be removed using a non-abrasive cleaner.

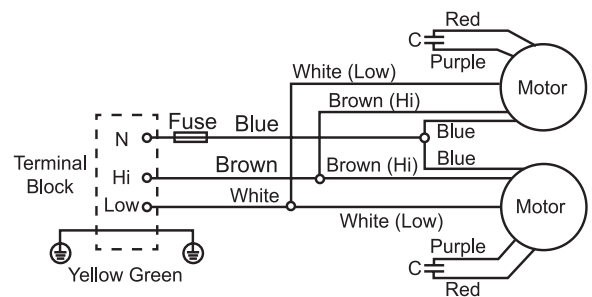
4.2 All fastenings should be checked for tightness. In addition, all rotating items should be checked after 12 months

4.3 Bearings are of the 'sealed for life' type and will not need a detailed inspection.

### 5. DIMENSIONAL DRAWING



### 6. WIRING DIAGRAM



Model	Dimensions, mm							Weight (kg)
	A	B	C	D	E	F	G	
AC1209	900	50	400	113	249	230	214	12.4
AC1212	1200	200	400	113	249	230	214	13.6
AC1215	1500	350	400	113	249	230	214	17.6

**WARNING-** Do not cover the air inlet and outlet. Only a suitably qualified and competent person may carry out maintenance after the electrical supply has been isolated.

# WARRANTY



Scan the above QR code or visit  
[www.fantech.com.au/warranty](http://www.fantech.com.au/warranty)  
to view WARRANTY  
information online



[www.fantechtrade.com.au](http://www.fantechtrade.com.au)

[www.fantechtrade.co.nz](http://www.fantechtrade.co.nz)

[info@fantechtrade.com.au](mailto:info@fantechtrade.com.au)

Australia: 1300 387 587

New Zealand: 0800 106 266