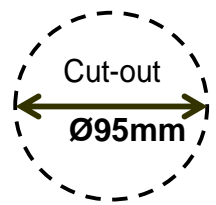


# Premium Power Board Bench Top Power Solution 18878/13



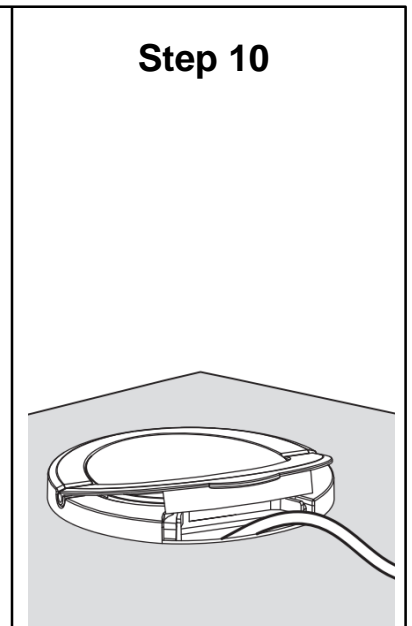
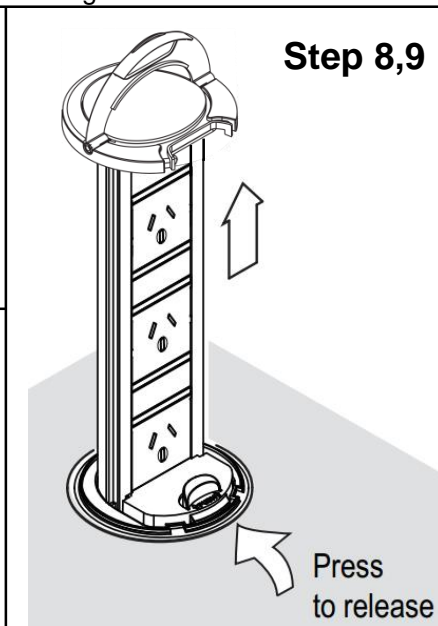
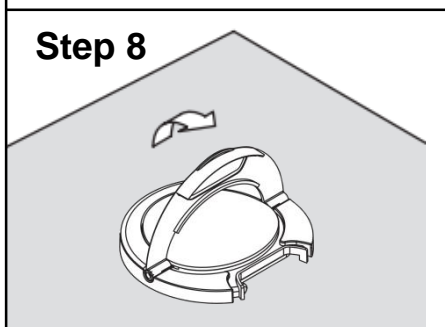
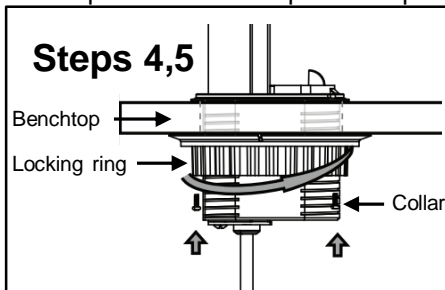
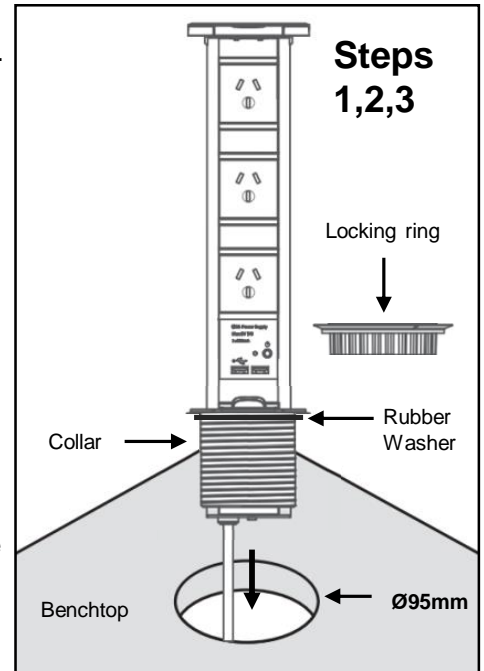
Congratulations on the purchase of your new Brilliant Premium Power Board. Before first using, it is most important that you read and follow the instructions on this document, even if you feel you are quite familiar with this type of product. Find a safe place and keep this document handy for future reference.

## IMPORTANT SAFEGUARDS:

- This product is not intended to be mounted in walls, ceilings or floors.
- This product includes a safety overload switch on the bottom of the unit. Ensure you have easy access to this if required to reset.
- Any unauthorised modification might impair the product safety and will void Brilliant Warranty.
- If the external flexible cable or cord is damaged, the product should be discarded.

## INSTALLATION:

1. Cut a Ø95mm hole into the bench surface. The thickness of the surface should be between 10mm and 50mm.
2. Unscrew the locking ring anti-clockwise from the collar and keep aside for step 5.
3. Insert the power board into the bench from above (ensure rubber washer sits against top of bench), feeding the cable through first. Ensure there is room below the bench (approximately 430mm) to house the power board when it is retracted / fully closed.
4. From below the bench, slide the locking ring over the plug and cable and onto the collar.
5. Screw the locking ring clockwise onto the collar until it is firm.
6. Insert the plug into a wall socket or surface mount socket.
7. Turn on the power. The power board is ready for use.
8. To use the power board, lift the handle up and pull upwards until the power board reaches its locking position.
9. When not in use the power board can be pushed down by pressing the release button and pushing the unit down into the bench.
10. When side entry plugs are used the power board can operate from the shut position as the top lid will open allowing room for the cable.





# Premium Power Board Bench Top Power Solution 18878/13

## SPECIFICATIONS:

**Max Total Load:** 2400W, 10A.

**Socket Outlets:** 3

**Protection:** Class I. Must be earthed.

**USB current:** 2400mA

**Voltage:** 230-240V~ 50Hz

**Cut-out size:** Ø95mm

**IP rating:** IP54 (benchtopy installation - ensure the rubber washer is compressed tightly on top surface)

## FOR INDOOR USE ONLY

The IP54 rating is only applicable when all plugs are removed and the product is fully closed.

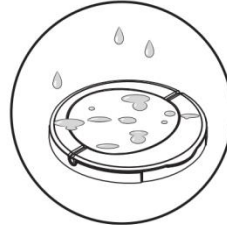
## USB SPECIFICATIONS:

**Max Output current:** 2400mA

**Output Voltage:** 5v DC

**USB Outlets:** 2

**LED Indicator and Individual on switch**



IP54

## Warranty:

Brilliant Lighting warrants this product against defects in manufacture and workmanship for a period of 5 years from date of purchase. This warranty is only valid for products installed by a qualified electrical contractor and operated within the guidelines specified by Brilliant Lighting, and within the correct operating voltage ranges as stated on the product's rating label.

Warranty does not include damage or loss arising from incorrect installation, operation or maintenance of this product, damage caused through modification, incorrect installation, service by unqualified or unauthorised personnel or lack of regular maintenance and cleaning. Proof of installation by qualified personnel may be required, eg. Electrical Safety Certificate. Proof of purchase must be supplied with all warranty claims.

This warranty is provided in addition to any other rights and remedies of the customer under any law. In applications not intended for household, personal or domestic use, liability is limited to replacement or reimbursement of product only. Brilliant Lighting does not warranty the costs of removal or re-installation of this product or associated components.

*Our goods come with guarantees that cannot be excluded under the Australian Consumer Law. You are entitled to a replacement or refund for a major failure and compensation for any other reasonably foreseeable loss or damage. You are also entitled to have the goods repaired or replaced if goods fail to be of acceptable quality and the failure does not amount to a major failure.*

Any claim under this warranty must be made within 5 year of the date of purchase of the product. To make a claim under the warranty; at your own expense take the product (with proof of purchase – receipt or similar) to the store where you purchased the product or contact Brilliant Lighting at the address below.

This warranty is given by:

**Brilliant Lighting (Aust) Pty. Ltd.**

**ABN 37 006 203 694**

**956 Stud Road Rowville, VIC 3178**

**Phone: 03 9765 2555**

**Email: [info@brilliantlighting.com.au](mailto:info@brilliantlighting.com.au)**

**MADE IN CHINA**