

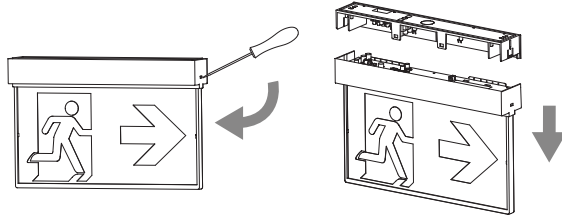
## EV-RAZOR-SM-CORE-24M-B

# 12124

Remove the product from the box and inspect it for any damage. If you believe the product to be damaged or otherwise unsound, **DO NOT** install the product. Please pack it back into its box and return it to the place of purchase for replacement. If the product is satisfactory, proceed with the installation. Prior to installation, components may require disassembly prior to fitment.

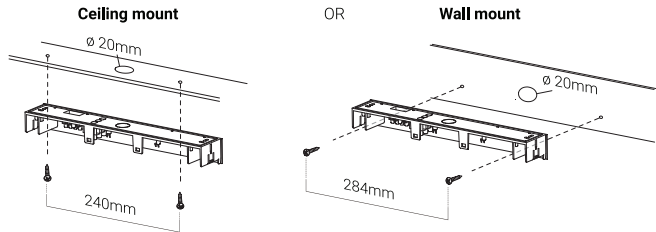
1

Separate the top from the unit using a flat-bladed screwdriver to release locking tabs (as shown).



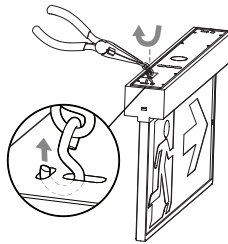
2

Use appropriate mounting screws to secure the unit on either ceiling or wall surface. Ensure a 20mm diameter cutout for cable entry.

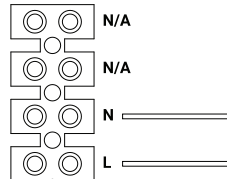


3

Chain mount: Use the hook location shown to support the unit using hanging chain (not included).



### WIRING



### SAFETY WARNINGS

1. This product must only be installed by a licensed electrician.
2. Before commencing installation turn off and isolate the electrical supply.
3. Risk of accidental contact with live parts. Do not energise with product open or disassembled.
4. Mains supply and battery circuit separated by basic insulation.
5. The only user serviceable / replaceable part is the battery pack.
6. Do not attempt to service other parts of the fitting as this will void the warranty.
7. After installation allow the battery to charge for 24 hours before carrying out discharge testing.
8. As the installer, it is your responsibility to ensure you comply to all relevant building and safety codes for example the BCA, AS3000.
9. Once the battery can no longer meet the required rated duration it must be replaced.
10. For indoor use only.

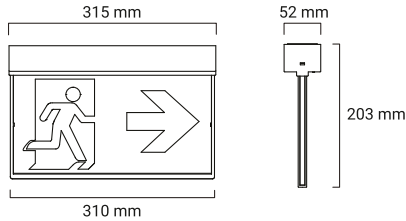
### ⚠ WARNING

The luminaire is connected to an unswitched active during normal operating conditions. When disconnected from the mains supply, the luminaire is powered by a LiFePO<sub>4</sub> battery operated inverter. Due to this, care should be taken when replacing the battery.

## ORDER INFORMATION

| Order code             | SKU   | Description   | Carton QTY. |
|------------------------|-------|---|-------------|
| EV-RAZOR-SM-CORE-24M-B | 12124 | Slimblade Core Surface-mount Exit light 24M - Black | 4           |

## DIMENSIONS (MM)



## SPECIFICATIONS

|                                     |                        |                                    |  |                               |                     |
|-------------------------------------|------------------------|------------------------------------|--|-------------------------------|---------------------|
| <b>Voltage</b>                      | 230 V ~                | <b>IP rating</b>                   | IP20   | <b>Duration</b>               | 90 / 120 min        |
| <b>Frequency</b>                    | 50 Hz                  | <b>Mounting type</b>               | Ceiling/Wall/Chain mount (brackets not included) | <b>Battery spec</b>           | 3.2V 1500mAh        |
| <b>Class</b>                        | 2                      | <b>Viewing Distance</b>            | 24M  | <b>Battery type</b>           | LiFePO <sub>4</sub> |
| <b>Max. ambient temp.</b>           | 0 to 40°C              | <b>Wiring</b>                      | Terminal Block                                   | <b>Battery supply current</b> | 175mA               |
| <b>Maintained Power Consumption</b> | Max. 2.5W<br>Avg. 2.3W | <b>Projected light source life</b> | >20Y/00M   | <b>Charging time</b>          | <20 hours           |
|                                     |                        |                                    |  | <b>Charger type</b>           | Multi-state         |

## REPLACING THE BATTERY

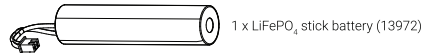
Access the battery by removing the product cover. Disconnect and remove battery. Replace battery as was previously installed. Allow a minimum 24 hours charging time before carrying out any discharge tests as per the requirements in AS/NZS 2293.

## ACCESSORIES AND SPARE PARTS

| SKU   | Description                                       |
|-------|---|
| 13972 | LiFePO <sub>4</sub> Battery, 3.2V 1500mAh, 1 cell |
| 02988 | 24M decal pack to suit Razor Core black           |

## BATTERY LIFE

- Battery minimum life is 4 years, and can only be used under emergency mode.
- Once the battery can no longer meet the required rated duration it must be replaced.
- To maintain the economic life of this product it is required that the battery be discharged and recharged at least once every 6 months. The battery life can be reduced if the battery is not discharged.



## TEST SWITCH

| Action | Function              |
|--------|-----------------------|
| Hold   | Run in emergency mode |

## INDICATORS

### CHARGE LED - GREEN

| State | Meaning   |
|-------|---|
| Off   | Battery charging<br>Battery failed / disconnected |

### STATUS LED - AMBER

| State | Meaning          |
|-------|------------------|
|       | Normal operation |

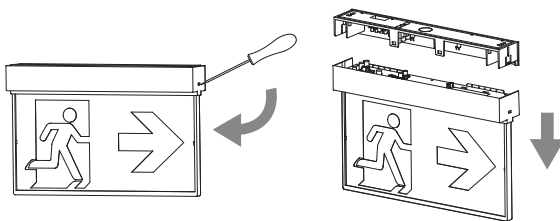
## EV-RAZOR-SM-CORE-24M

# 12123

Remove the product from the box and inspect it for any damage. If you believe the product to be damaged or otherwise unsound, **DO NOT** install the product. Please pack it back into its box and return it to the place of purchase for replacement. If the product is satisfactory, proceed with the installation. Prior to installation, components may require disassembly prior to fitment.

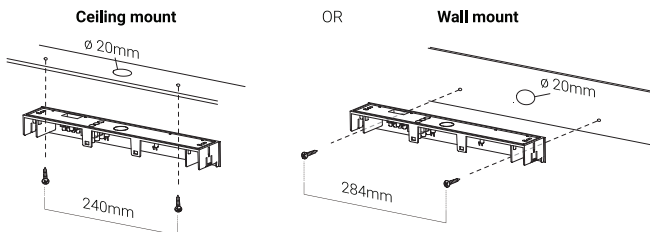
1

Separate the top from the unit using a flat-bladed screwdriver to release locking tabs (as shown).



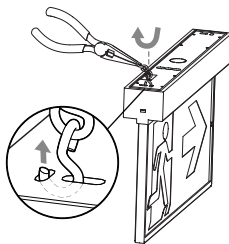
2

Use appropriate mounting screws to secure the unit on either ceiling or wall surface. Ensure a 20mm diameter cutout for cable entry.

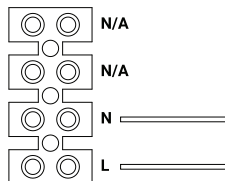


3

Chain mount: Use the hook location shown to support the unit using hanging chain (not included).



### WIRING



### SAFETY WARNINGS

1. This product must only be installed by a licensed electrician.
2. Before commencing installation turn off and isolate the electrical supply.
3. Risk of accidental contact with live parts. Do not energise with product open or disassembled.
4. Mains supply and battery circuit separated by basic insulation.
5. The only user serviceable / replaceable part is the battery pack.
6. Do not attempt to service other parts of the fitting as this will void the warranty.
7. After installation allow the battery to charge for 24 hours before carrying out discharge testing.
8. As the installer, it is your responsibility to ensure you comply to all relevant building and safety codes for example the BCA, AS3000.
9. Once the battery can no longer meet the required rated duration it must be replaced.
10. For indoor use only.

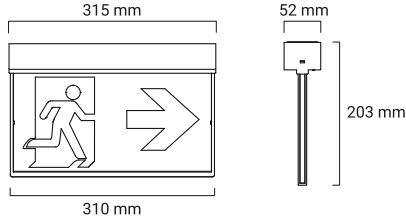
### ⚠ WARNING

The luminaire is connected to an unswitched active during normal operating conditions. When disconnected from the mains supply, the luminaire is powered by a LiFePO<sub>4</sub> battery operated inverter. Due to this, care should be taken when replacing the battery.

## ORDER INFORMATION

| Order code           | SKU   | Description                                 | Carton QTY. |
|----------------------|-------|---|-------------|
| EV-RAZOR-SM-CORE-24M | 12123 | Slimblade Core Surface-mount Exit Light 24M | 4           |

## DIMENSIONS (MM)



## SPECIFICATIONS

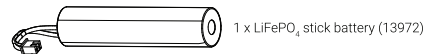
|                                     |                        |                                    |  |                               |                     |
|-------------------------------------|------------------------|------------------------------------|--|-------------------------------|---------------------|
| <b>Voltage</b>                      | 230 V ~                | <b>Mounting type</b>               | Ceiling/Wall/Chain mount (brackets not included) | <b>Duration</b>               | 90 / 120 min        |
| <b>Frequency</b>                    | 50 Hz                  | <b>Viewing Distance</b>            | 24M  | <b>Battery spec</b>           | 3.2V 1500mAh        |
| <b>Class</b>                        | 2                      | <b>Wiring</b>                      | Terminal Block                                   | <b>Battery type</b>           | LiFePO <sub>4</sub> |
| <b>Max. ambient temp.</b>           | 0 to 40°C              | <b>Classification</b>              | C0:E6.3 C90:E12.5                                | <b>Battery supply current</b> | 175mA               |
| <b>IP rating</b>                    | IP20                   | <b>Projected light source life</b> | >20Y/00M   | <b>Charging time</b>          | <20 hours           |
| <b>Maintained Power Consumption</b> | Max. 2.5W<br>Avg. 2.3W |                                    |  | <b>Charger type</b>           | Multi-state         |

## REPLACING THE BATTERY

Access the battery by removing the product cover. Disconnect and remove battery. Replace battery as was previously installed. Allow a minimum 24 hours charging time before carrying out any discharge tests as per the requirements in AS/NZS 2293.

## BATTERY LIFE

- Battery minimum life is 4 years, and can only be used under emergency mode.
- Once the battery can no longer meet the required rated duration it must be replaced.
- To maintain the economic life of this product it is required that the battery be discharged and recharged at least once every 6 months. The battery life can be reduced if the battery is not discharged.



## ACCESSORIES AND SPARE PARTS

| SKU   | Description                                       |
|-------|---|
| 13972 | LiFePO <sub>4</sub> Battery, 3.2V 1500mAh, 1 cell |
| 02987 | 24M decal pack to suit Razor Core                 |

## TEST SWITCH

| Action | Function              |
|--------|-----------------------|
| Hold   | Run in emergency mode |

## INDICATORS

### CHARGE LED - GREEN

| State | Meaning   |
|-------|---|
| Off   | Battery charging<br>Battery failed / disconnected |

### STATUS LED - AMBER

| State | Meaning          |
|-------|------------------|
|       | Normal operation |