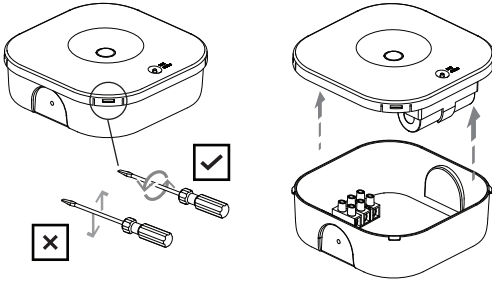
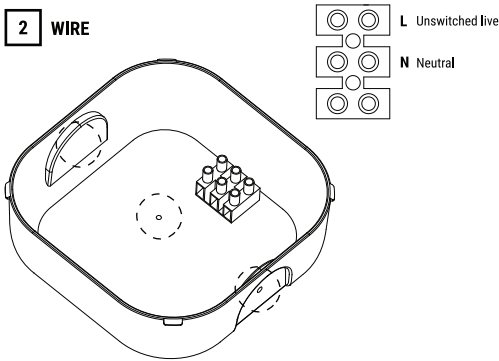


EV-LED-FIRE-SM-CORE-IP65(-B)

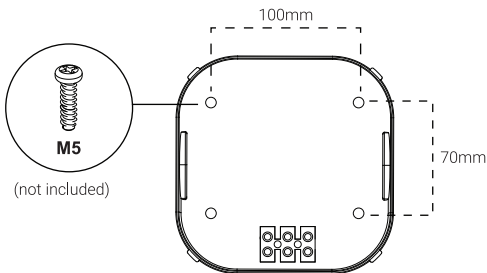
1 OPEN



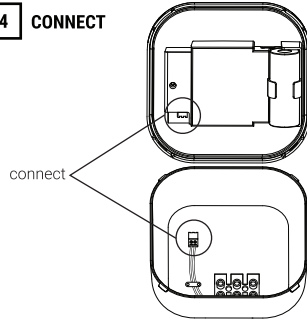
2 WIRE



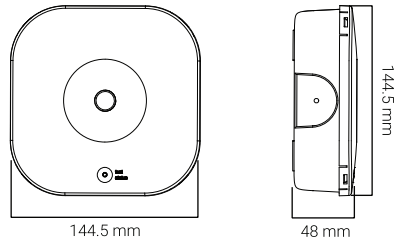
3 MOUNT



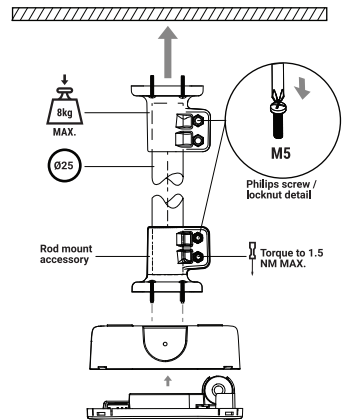
4 CONNECT



i DIMENSIONS



OPTIONAL



EV-LED FIRE-SM-CORE-IP65(-B)

SPECIFICATIONS

Voltage 220-240 V~
Frequency 50 Hz
Ambient temp. 50°C
Class 2
Classification CO: D50

Rated duration 90 min
IP rating IP65
Mounting type Surface
Wiring Terminal Block

Ledfire Core Surface Mount Emergency Luminaire

Battery spec 3.2V 2100mAh
Battery type LiFePO₄
Average Power Consumption 0.4 W
Max. Power Consumption 2 W

SPACING TABLE (DISTANCE BETWEEN FITTINGS)

Lx	Classification	Mounting Height (m)															
		2.1	2.4	2.7	3.0	3.3	3.6	4.0	4.5	5.0	6.0	7.0	8.0	9.0	10	15	20
0.2	D50	11.5	13.2	14.8	16.5	18.1	19.8	21.8	22.5	23.1	24.1	24.9	25.4	25.7	25.8	23.6	0.0 ⁴

*Care should be taken when spacing luminaires at the distance indicated by shaded regions to ensure that conformance to AS/NZS 2293.1:2018 Clause 4.3 is maintained (i.e. maximum 500m² per emergency luminaire).

ORDER INFORMATION

Order code

EV-LED FIRE-SM-CORE-IP65
 EV-LED FIRE-SM-CORE-IP65-B
 EV-LED FIRE-SM-ADV-IP65
 EV-LED FIRE-SM-ADV-IP65-DA
 EV-LED FIRE-SM-ADV-IP65-B-DA
 EV-LED FIRE-SM-ADV-IP65-LK
 EV-LED FIRE-SM-ADV-IP65-B-LK

SKU

11546
 11547
 11555
 11548
 11549
 11550
 11551

Description

Ledfire Core Surface Mount IP65 - D50
 Ledfire Core Surface Mount IP65 - Black - D50
 Ledfire Advanced Surface Mount IP65 - D63
 Ledfire Advanced Surface Mount IP65 DALI - D63
 Ledfire Advanced Surface Mount IP65 - Black - DALI - D63
 Lynk Advanced Ledfire Surface Mount IP65 - D63 - with Wireless
 Lynk Advanced Ledfire Surface Mount IP65 - Black - D63 - with Wireless



SAFETY WARNINGS

1. This product must only be installed by a suitably qualified person.
2. Before commencing installation turn off and isolate the electrical supply.
3. Supply voltages within product. Isolate supply voltages before opening or servicing.
4. There are no user serviceable parts. Do not attempt to service other parts as this will void the warranty.
5. As the installer, it is your responsibility to ensure you comply to all relevant building and safety codes. Refer to application standards for the relevant rules.
6. When the ac power is cut or when pressing the test button, the luminaire will operate in emergency mode.
7. The light source contained in this luminaire shall only be replaced by the manufacturer or his service agent or a similar qualified person.
8. Do not insulation test over 500vdc.
9. The rechargeable device will operate normally after the removal of short circuit fault.
10. The luminaire is connected to an unswitched active during normal operating conditions. When disconnected from the mains supply, the luminaire is powered by a LiFePO₄ battery operated inverter. Due to this, care should be taken when replacing the battery.