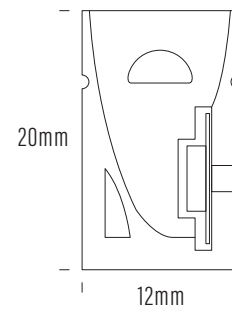
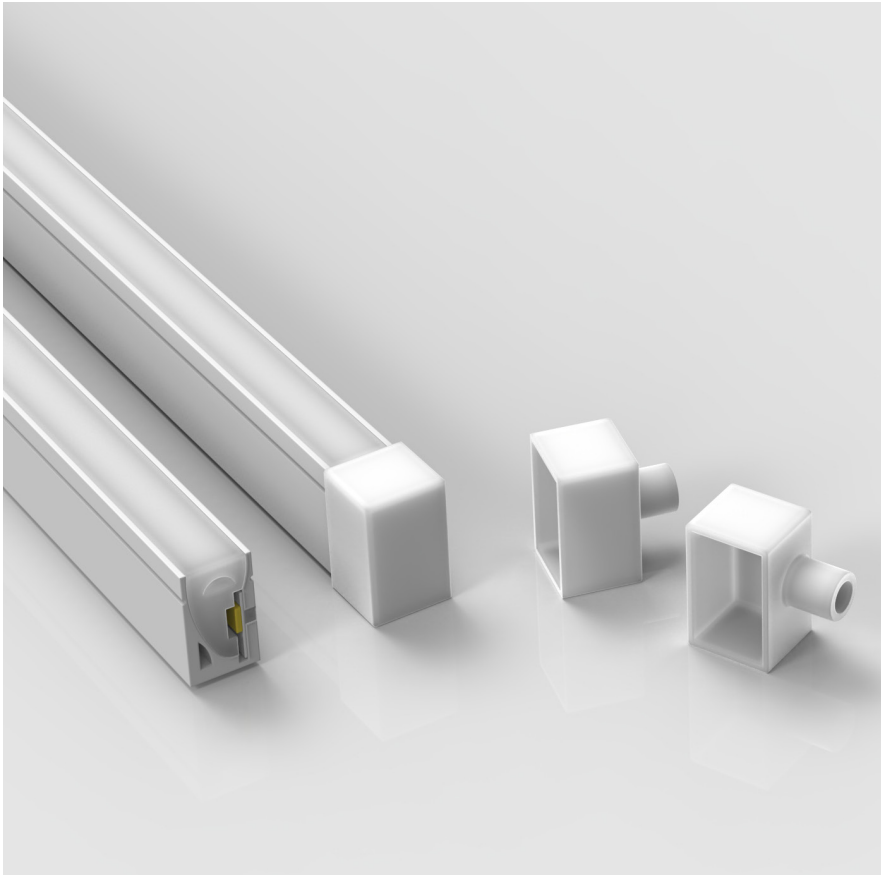


AQS-420 / Mono

The AQS-420 Neon Flex product is manufactured in a continuous extrusion process and then manually terminated to length with IP65 overmolded cable entry points here in our Sydney factory for a quicker turn-around time.

Neon Flex



Product	AQS-420-Mono
Voltage	24V DC
Watts (per Meter)	10W / 15W
IP Rating	IP65
Lumen Output (per Meter)	270lm to 450lm
CCT & Colour Options	2000K / 2700K / 3000K / 4000K / 5000K
Working Mode	Constant Voltage (PWM) / DMX
Max Length (Single Power Feed)	10m / 7m
Max Length (Double Power Feed)	20m / 14m
Cut Interval	50mm
Bend Direction	Horizontally
Minimum Bend Diameter	200mm
LED Type	SMD2835
LED Qty / M	140pcs
Lumen Maintenance	70,000 Hours L70@ 25°C, 50,000 Hours L70@ 50°C
Materials	Silicone
Emission Angle	120°
Operating Temperature	-20° to +40°C
Installation Temperature	5° to +35°C
Warranty	3 Year Aqualux Warranty

Dimming Options

PSU Control (PWM / Phase / Remote)
24V Control (PWM)

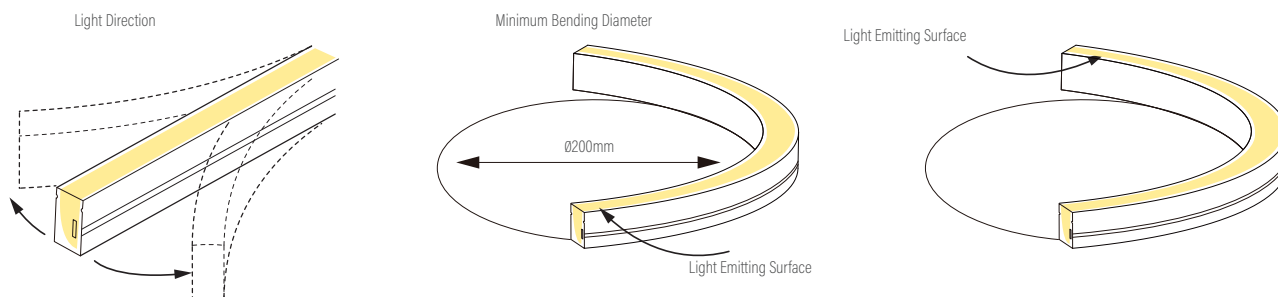
For wiring diagrams please refer to the aqualux website: www.aqualux.com.au / Support / Downloads / Wiring Diagrams

Neon Flex

Variations

Product Code	CCT Kelvin	Voltage Direct Current	Watts Meter	Lumens Meter	Max Run Single End	Max Run Double End
AQS-420-20A10	2000K	24V DC	10W	270lm	10m	20m
AQS-420-20A15	2000K	24V DC	15W	350lm	7m	14m
AQS-420-27A10	2700K	24V DC	10W	300lm	10m	20m
AQS-420-27A15	2700K	24V DC	15W	375lm	7m	14m
AQS-420-30A10	3000K	24V DC	10W	330lm	10m	20m
AQS-420-30A15	3000K	24V DC	15W	380lm	7m	14m
AQS-420-40A10	4000K	24V DC	10W	340lm	10m	20m
AQS-420-40A15	4000K	24V DC	15W	445lm	7m	14m
AQS-420-50A10	5000K	24V DC	10W	345lm	10m	20m
AQS-420-50A15	5000K	24V DC	15W	450lm	7m	14m

Bending Directions



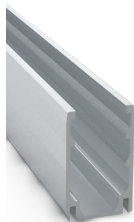
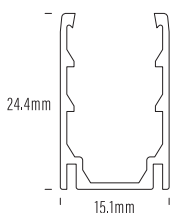
Neon Flex

Mounting

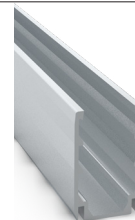
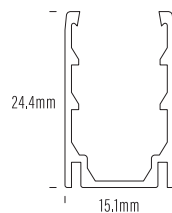
AQS-420-ACC-01
1m Aluminium

Anti-slip profile.

1. More aggressive retention of Neon Flex.
2. Harder to remove once inserted.
3. Use for vertical or inverted mounting applications.

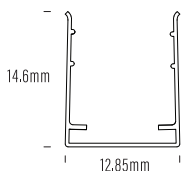


AQS-420-ACC-03
2m Aluminium



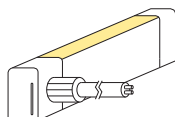
AQS-500-ACC-AL4-01
Bendable S Channel

Note: Compatible with AQS-420

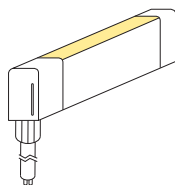


Entry Types

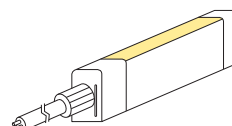
S01



B01



D01

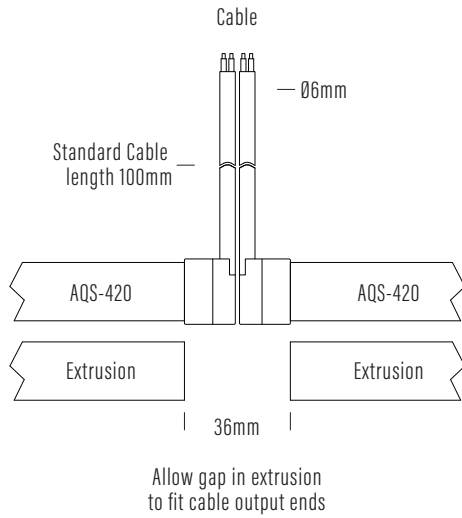


Neon Flex

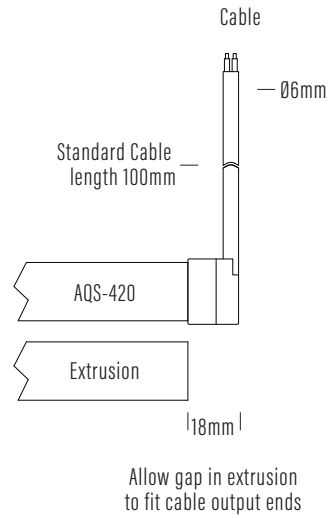


Extrusion and End Cap allowances

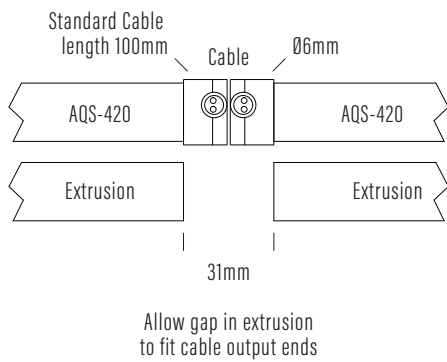
Bottom Cable Double Output



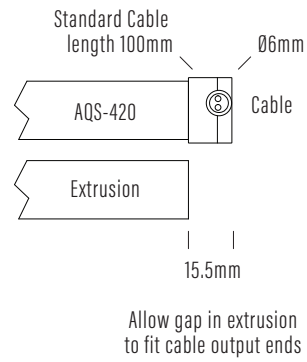
Bottom Cable Single Output



Side Cable Double Output



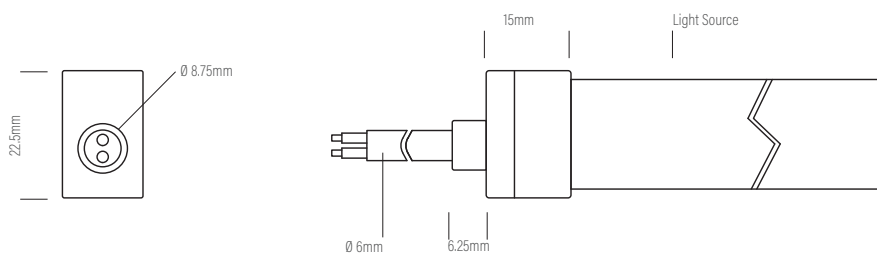
Side Cable Single Output



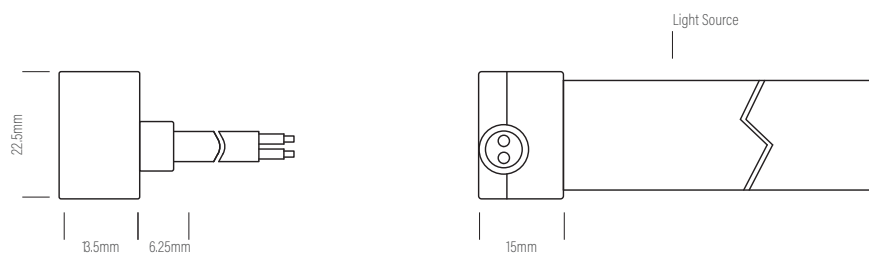
Neon Flex

Injection Moulded Connectors Dimensions

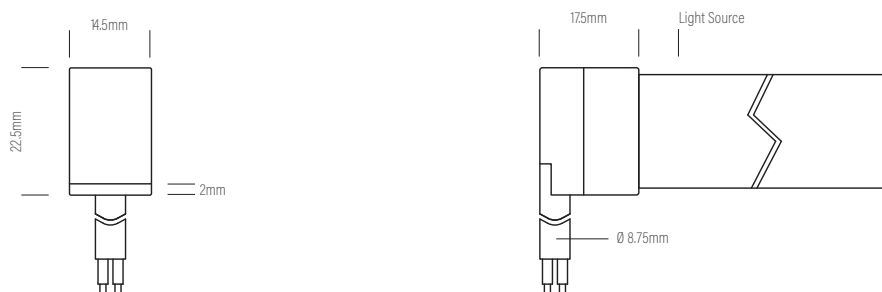
Direct Cable Entry



Side Cable Entry



Bottom Cable Entry



Neon Flex

AQS Family Reference Table

Product	Type	IP Rating	LED Options	Size mm	Power/m	Application
AQS-170	Cob Strip	IP20	Mono	10mm	5W / 10W / 15W DC	Internal / Profile required
AQS-172	Cob Strip	IP20	Mono	4mm	5W DC	Internal / Profile required
AQS-173	Cob Strip	IP20	RGBW	12mm	16W DC	Internal / Profile required
AQS-400	Neon Flex	IP65	Mono	9 x 10	5W / 10W DC	External / No profile required
AQS-401	Neon Flex	IP65	Mono	10 x 10	5W / 10W DC	External / No profile required
AQS-402	Neon Flex	IP65	Mono / RGB	6 x 12	5W / 10W DC	External / No profile required
AQS-410	Neon Flex	IP65	RGB	13 x 12	10W DC	External / No profile required
AQS-420	Neon Flex	IP65	Mono / RGBW	12 x 20	10W / 15W	External / No profile required
AQS-500	Neon Flex	IP68	Mono / RGB / RGBW / DMX	11.5 x 21	(Mono 5W / 8W / 12W) / 12W / 17W / 18W	External / Submerged / No profile
AQS-505	Neon Flex	IP68	Mono	13.5 x 13.5	10W	External / Submerged / No profile
AQS-510	Neon Flex	IP68	Mono / RGB / RGBW / DMX	16.5 x 16.5	10W / 13W / 17W / 18W	External / Submerged / No profile

Extension Wire Recommendations

Maximum extension wire length according to light power

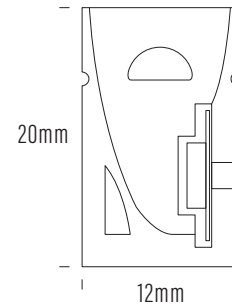
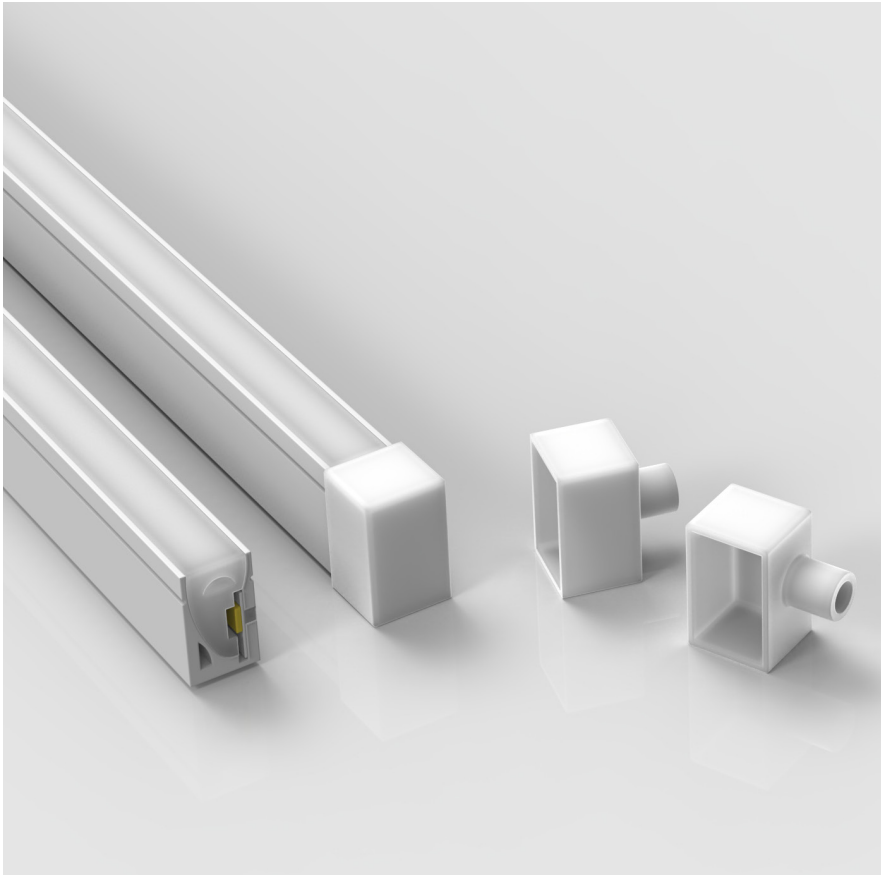
Watts	22AWG 0.34mm ²	20AWG 0.53mm ²	18AWG 0.82mm ²	17AWG 1.04mm ²	16AWG 1.38mm ²	14AWG 2.07mm ²	12AWG 3.29mm ²	10AWG 5.62mm ²
10W	36m	60m	100m	120m	140m	240m	400m	600m
20W	18m	30m	50m	60m	70m	120m	200m	300m
30W	12m	20m	30m	38m	45m	80m	130m	200m
40W	8m	15m	22m	28m	35m	60m	95m	140m
50W	6m	12m	18m	22m	28m	48m	75m	105m
60W	5m	10m	15m	18m	22m	36m	60m	88m
70W	-	8m	12m	14m	18m	30m	50m	72m
80W	-	6m	10m	11m	14m	24m	40m	58m
90W	-	4m	7m	8m	10m	18m	30m	45m
100W	-	-	5m	6m	7m	12m	22m	32m
110W	-	-	3m	4m	5m	8m	15m	22m
120W	-	-	2m	2.5m	3m	0m	8m	12m

AQS-420 / RGBW

The AQS-420 Neon Flex product is manufactured in a continuous extrusion process and then manually terminated to length with IP65 overmolded cable entry points here in our Sydney factory for a quicker turn-around time.

AQS-420-RGBW

Neon Flex



Product	AQS-420-RGBW
Voltage	24V DC
Watts (per Meter)	15W
IP Rating	IP65
Lumen Output (per Meter)	300lm
CCT & Colour Options	RGBW
Working Mode	Constant Voltage (PWM) / DMX
Max Length (Single Power Feed)	7m
Max Length (Double Power Feed)	14m
Cut Interval	71.4mm
Bend Direction	Horizontally
Minimum Bend Diameter	120mm
LED Type	SMD2835
LED Qty / M	196
Lumen Maintenance	70,000 Hours L70@ 25°C, 50,000 Hours L70@ 50°C
Materials	Silicone
Emission Angle	120°
Operating Temperature	-20° to +40°C
Installation Temperature	5° to +35°C
Warranty	3 Year Aqualux Warranty

Example Product Code Variation

Produce Code	Size	CCT	Voltage	W / M	Lm/M
AQS-420-Z2A15	2012	RGBW	24V DC	15W	300lm

Control Options

24V PWM
24V DMX (With DMX-PWM Interface)

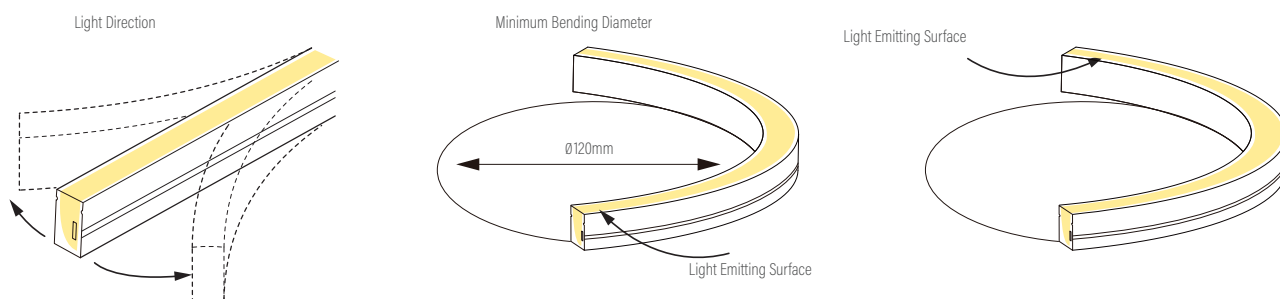
For wiring diagrams please refer to the aqualux website: www.aqualux.com.au / Support / Downloads / Wiring Diagrams

Neon Flex

Variations

Product Code	CCT Kelvin	Voltage Direct Current	Watts Meter	Lumens Meter	Min Run Single End	Max Run Double End
AQS-420-Z2A15	RGB  3000K	24V DC	15W	300lm	7m	14m

Bending Directions

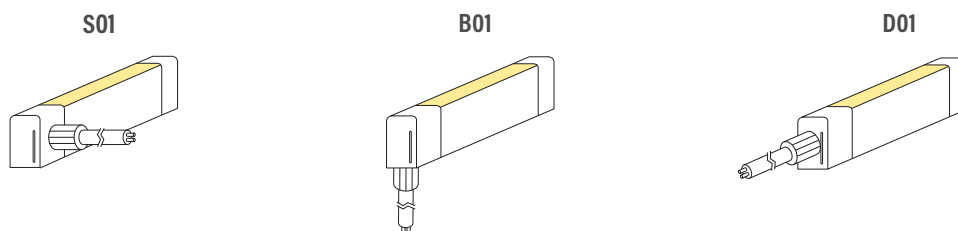


Neon Flex

Mounting



Entry Types

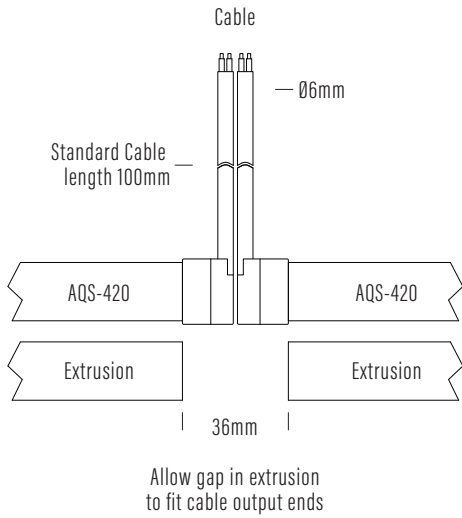


Neon Flex

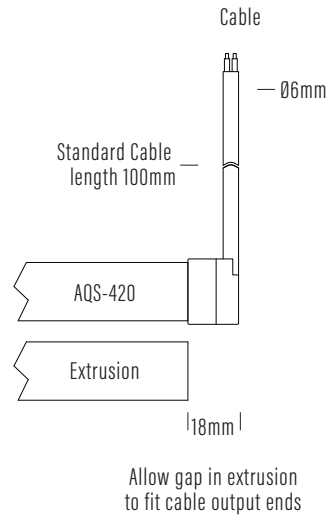


Extrusion and End Cap allowances

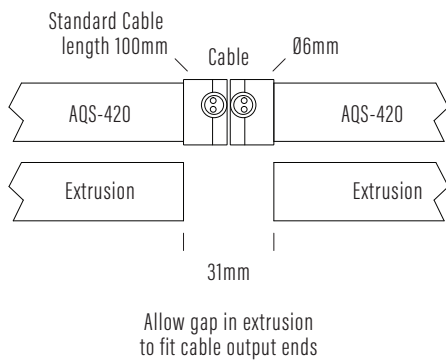
Bottom Cable Double Output



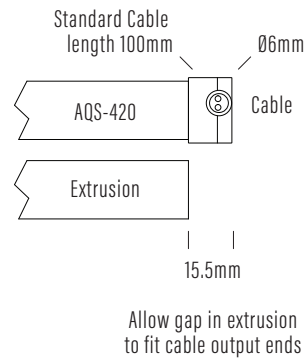
Bottom Cable Single Output



Side Cable Double Output



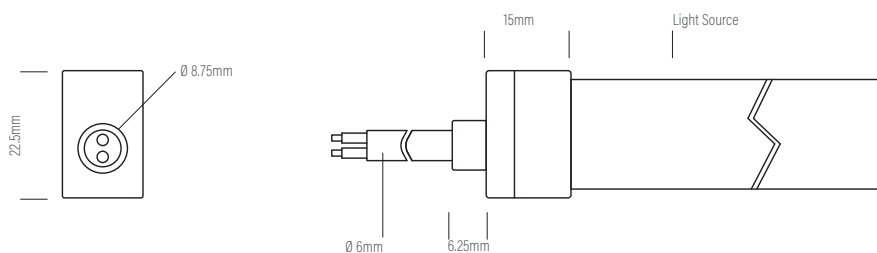
Side Cable Single Output



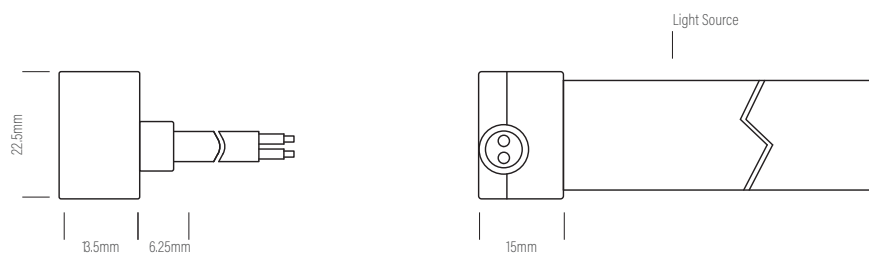
Neon Flex

Injection Moulded Connectors Dimensions

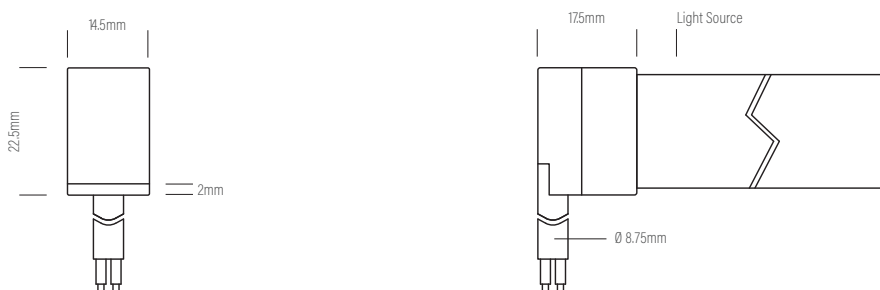
Direct Cable Entry



Side Cable Entry



Bottom Cable Entry



Neon Flex

AQS Family Reference Table

Product	Type	IP Rating	LED Options	Size mm	Power/m	Application
AQS-170	Cob Strip	IP20	Mono	10mm	5W / 10W / 15W DC	Internal / Profile required
AQS-172	Cob Strip	IP20	Mono	4mm	5W DC	Internal / Profile required
AQS-173	Cob Strip	IP20	RGBW	12mm	16W DC	Internal / Profile required
AQS-400	Neon Flex	IP65	Mono	9 x 10	5W / 10W DC	External / No profile required
AQS-401	Neon Flex	IP65	Mono	10 x 10	5W / 10W DC	External / No profile required
AQS-402	Neon Flex	IP65	Mono / RGB	6 x 12	5W / 10W DC	External / No profile required
AQS-410	Neon Flex	IP65	RGB	13 x 12	10W DC	External / No profile required
AQS-420	Neon Flex	IP65	Mono / RGBW	12 x 20	10W / 15W	External / No profile required
AQS-500	Neon Flex	IP68	Mono / RGB / RGBW / DMX	11.5 x 21	(Mono 5W / 8W / 12W) / 12W / 17W / 18W	External / Submerged / No profile
AQS-505	Neon Flex	IP68	Mono	13.5 x 13.5	10W	External / Submerged / No profile
AQS-510	Neon Flex	IP68	Mono / RGB / RGBW / DMX	16.5 x 16.5	10W / 13W / 17W / 18W	External / Submerged / No profile

Extension Wire Recommendations

Maximum extension wire length according to light power

Watts	22AWG 0.34mm ²	20AWG 0.53mm ²	18AWG 0.82mm ²	17AWG 1.04mm ²	16AWG 1.38mm ²	14AWG 2.07mm ²	12AWG 3.29mm ²	10AWG 5.62mm ²
10W	36m	60m	100m	120m	140m	240m	400m	600m
20W	18m	30m	50m	60m	70m	120m	200m	300m
30W	12m	20m	30m	38m	45m	80m	130m	200m
40W	8m	15m	22m	28m	35m	60m	95m	140m
50W	6m	12m	18m	22m	28m	48m	75m	105m
60W	5m	10m	15m	18m	22m	36m	60m	88m
70W	-	8m	12m	14m	18m	30m	50m	72m
80W	-	6m	10m	11m	14m	24m	40m	58m
90W	-	4m	7m	8m	10m	18m	30m	45m
100W	-	-	5m	6m	7m	12m	22m	32m
110W	-	-	3m	4m	5m	8m	15m	22m
120W	-	-	2m	2.5m	3m	0m	8m	12m