



Thank you very much for purchasing from M&R. We strive to provide a great product that is made by truck enthusiasts for truck enthusiasts.

2017+ Ford Raptor Gen2 Fog Light Kit 3.0

INCLUDED

- 2 Shroud plates
- 2 Mounting brackets
- (10) 20w square lights
- 20 M4 bolts
- M&R Wiring Harness



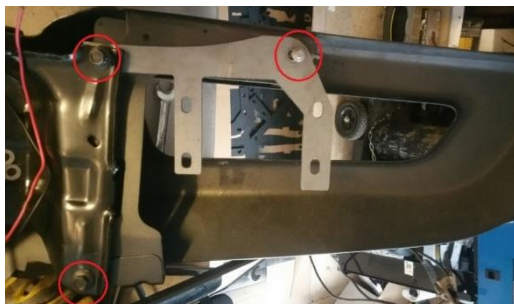
Step 1

Install the lights to the shroud using the M4 bolts supplied (2 per light). Repeat for all 10 lights.



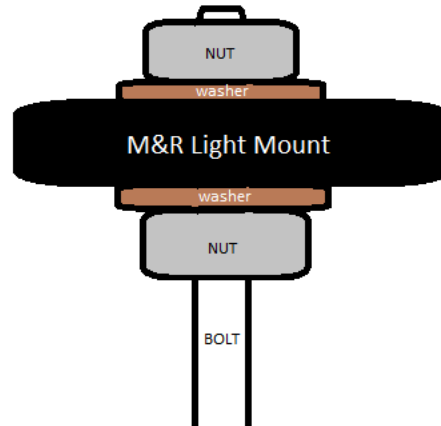
Step 2

Loosen these 3 bolts from inner fender side. Insert the mounting brackets and reuse the factory bolts. Don't tighten them fully just yet.



Step 3

Insert the shroud with the lights over the opening from inside the bumper hole and align the bolts with the holes on the mounting plate. Now its good moment to tighten the bolts from step 3. (In case you need longer bolts, we included them in a baggy)



Step 4

Unscrew the nut closer to the shroud plate so that the shroud plate is pressed against the inside of the bumper. Make sure it's nice and tight to prevent future vibration. Now tighten the outside nuts and move to the other side.

Step 5

Time for the wiring. The recipient of this kit is responsible for the ground connector of their choice along with the positive wire needed to reach the connections by the firewall. Ford has conveniently setup your truck with aux switches and the wire hook ups are already powered unlike the Gen1 Raptor. This makes wiring a lot easier. If you look at the left side of the engine bay (see picture below) closer to the firewall, you will see 2 bundles of 6 wires each. The bundle on the left already has power going to it and that's the one you want. The bundle on the right is not it and should be left alone. See the chart for reference



Step 6

Fuse negatives (blue) of the lights and ground them somewhere near the bracket. You can even use the bolts that hold the mounting brackets. Now it's time to decide how many switches you want to control the 10 light kit. You would need to extend the positive wires (brown for white and yellow for amber back glow) of the lights and connect them to the wire according to the chart. Please note that Ford changed some colors on the 2018 model. Please reference your user manual or contact us for assistance.

ENJOY YOUR ADVENTURE!
 &
 "FOR OFFROAD USE ONLY"

2017 FORD RAPTOR	
Aux switch 1	Green with blue stripes (15Amps)
Aux switch 2	Gray with yellow (15Amps)
Aux switch 3	Violet with orange stripes (10Amps)
Aux switch 4	Brown with blue stripes (10Amps)
Aux switch 5	Gray with orange stripes (5Amps)
Aux switch 6	Yellow with violet stripes (5Amps)

2018-2019 FORD RAPTOR	
Aux switch 1	Green with white stripes (15Amps)
Aux switch 2	Brown with blue (15Amps)
Aux switch 3	Gray with yellow stripes (10Amps)
Aux switch 4	Green with yellow stripes (10Amps)
Aux switch 5	Brown with white stripes (5Amps)
Aux switch 6	Green with orange stripes (5Amps)

2020 FORD RAPTOR	
Aux switch 1	Yellow (15Amps)
Aux switch 2	Green with Brown (15Amps)
Aux switch 3	Violet with Green stripes (10Amps)
Aux switch 4	Brown (10Amps)
Aux switch 5	Blue with Orange stripes (5Amps)
Aux switch 6	Yellow with Orange stripes (5Amps)