



Thank you very much for purchasing from M&R. We strive to provide a great product that is made by truck enthusiasts for truck enthusiasts.

# **2021+ Ford Bronco** **Modular Bumper** **30in Light Bar**

## **INCLUDED**

- (1) 30in Light Bar
- Mounting Brackets
- All Mounting Bolts



### **Step 1**

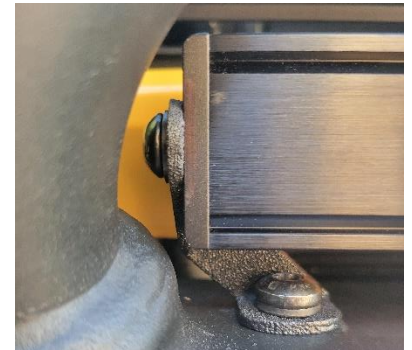
Remove (1) top inner factory M8 bolt from each side on the modular bumper. Keep them close, you are going to reuse them when installing the M&R brackets. The top of the bolthead is Torx Plus 40.

### **Step 2**

Install the M&R brackets into the bumper using the factory bolts removed. There is a left (passenger) and right(driver) bracket.

### **Step 3**

Install the M&R lightbar with supplied black bolts/washers through the eyelid of the bracket. If you have a factory bullbar, there should still be enough space to tighten the side bolts. Please use Hex key with Ball end to be able to tighten at an angle.



### **Step 4**

Now it's time for the wiring.

**If your Bronco did not come with AUX switches**, we recommend getting a generic lightbar wiring harness from AMAZON/EBAY

**If your Bronco has AUX switches** → there is over 6ft of wire from the light bar. This should be enough to reach the AUX wire hookups. Ford has conveniently setup your truck with aux switches (if equipped) and the wire hook ups are already powered. This makes wiring a lot easier. The auxiliary switchboard on the overhead console makes aftermarket customization easier with six prewired switches connected to the power distribution box. Each circuit is individually fused for connection of electrical accessories. There are six powered circuits and five non-powered circuits. Circuits from the under-hood fuse box (A) are powered.



*Passenger Side*



*Driver Side*

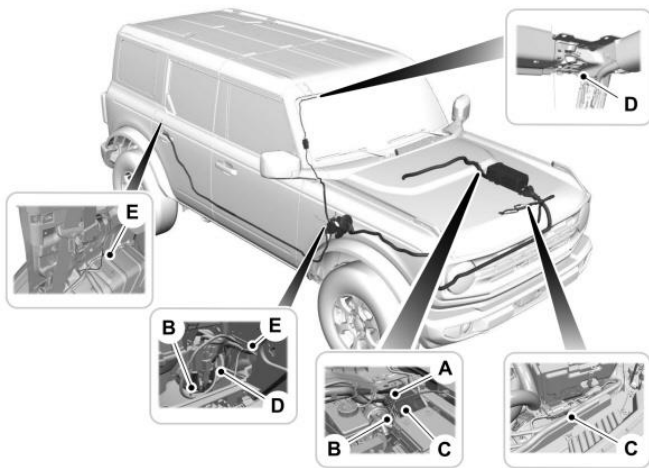


## IDENTIFYING THE AUXILIARY SWITCH WIRING

The relays are coded as follows:

Power Distribution Box	Wire Color	Wire Size	Fuse
AUX 1	Yellow	1.5 mm <sup>2</sup>	30A
AUX 2	Green/Brown	1.5 mm <sup>2</sup>	15A
AUX 3	Violet/Green	0.75 mm <sup>2</sup>	10A
AUX 4	Brown	0.75 mm <sup>2</sup>	10A
AUX 5	Blue/Orange	0.75 mm <sup>2</sup>	10A
AUX 6	Yellow/Orange	0.75 mm <sup>2</sup>	10A

“The Bronco Nation” has a very educational video illustrating how and where the wiring is. They also show a way you can drill through to feed the wiring through the inside of the vehicle instead of running it on the outside along the window into the engine bay. If you are running it down the window, we recommend using silicone to keep the wire in place.



ENJOY YOUR ADVENTURE!  
&  
“FOR OFFROAD USE ONLY”

<https://youtu.be/sq8brP17Lo8>

2021 Ford Bronco Auxiliary Switches | Bronco How-to Ep.  
8 | Bronco Nation