

GARDEN DÉCOR • OUTDOOR & INDOOR PLANTERS • HANGING BASKETS • URNS  
CASCADES • HAYRACKS • CAULDRON • CRADLES • PLANTERS • BIRD FEEDERS  
ARCHES & ARBORS • TRELLISES • GAZEBOS • FENCE • LANTERNS • FURNITURE  
PLANT STANDS • ETAGERE • HOME DÉCOR • GIFTS • WALL BRACKET • DOORMAT  
BIRD FEEDERS • PLANT SUPPORTS • INDOOR & OUT • DOOR LIVING • D É C O R  
ENTERTAINMENT • FIREPIT • LANTERNS + CANDLES • CANDLE STANDS • BENCHES  
GARDEN DÉCOR • OUTDOOR & INDOOR PLANTERS • HANGING BASKETS • URNS  
CASCADES • HAYRACKS • CAULDRON • CRADLES • PLANTERS • BIRD FEEDERS  
ARCHES & ARBORS • TRELLISES • GAZEBOS • FENCE • LANTERNS • FURNITURE  
PLANT STANDS • ETAGERE • HOME DÉCOR • GIFTS • WALL BRACKET • DOORMAT  
BIRD FEEDERS • PLANT SUPPORTS • INDOOR & OUT • DOOR LIVING • D É C O R  
ENTERTAINMENT • FIREPIT • LANTERNS + CANDLES • CANDLE STANDS • BENCHES  
GARDEN DÉCOR • OUTDOOR & INDOOR PLANTERS • HANGING BASKETS • URNS  
CASCADES • HAYRACKS • CAULDRON • CRADLES • PLANTERS • BIRD FEEDERS

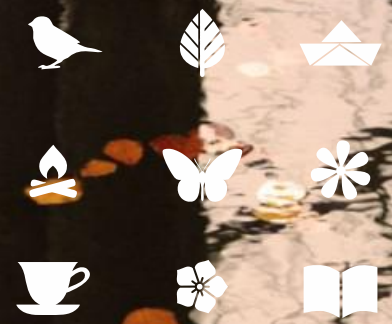


CATALOGUE



[www.earthgarden.in](http://www.earthgarden.in)





*"Live close to nature and you will never feel lonely"*  
Ruskin Bond

The soft touch of a butterfly as it flutters past the garden bench, the carpet of green grass under foot, the fairy-like glow of the fireflies in the dusk, the songs of the birds in the leaves, the subtle fragrance of basil and earth after a rain, the filigree of leafy shadows on a sunny wooden table, the soothing silence that is full of music...

*An Oasis of Tranquility!*

There is harmony here, an inner peace that comes from embracing and being embraced by Nature. Every experience is purer, sweeter and more joyous. Each time you step into this oasis, with yourself or in the company of friends and family, you become part of a moment, a story, a memory...

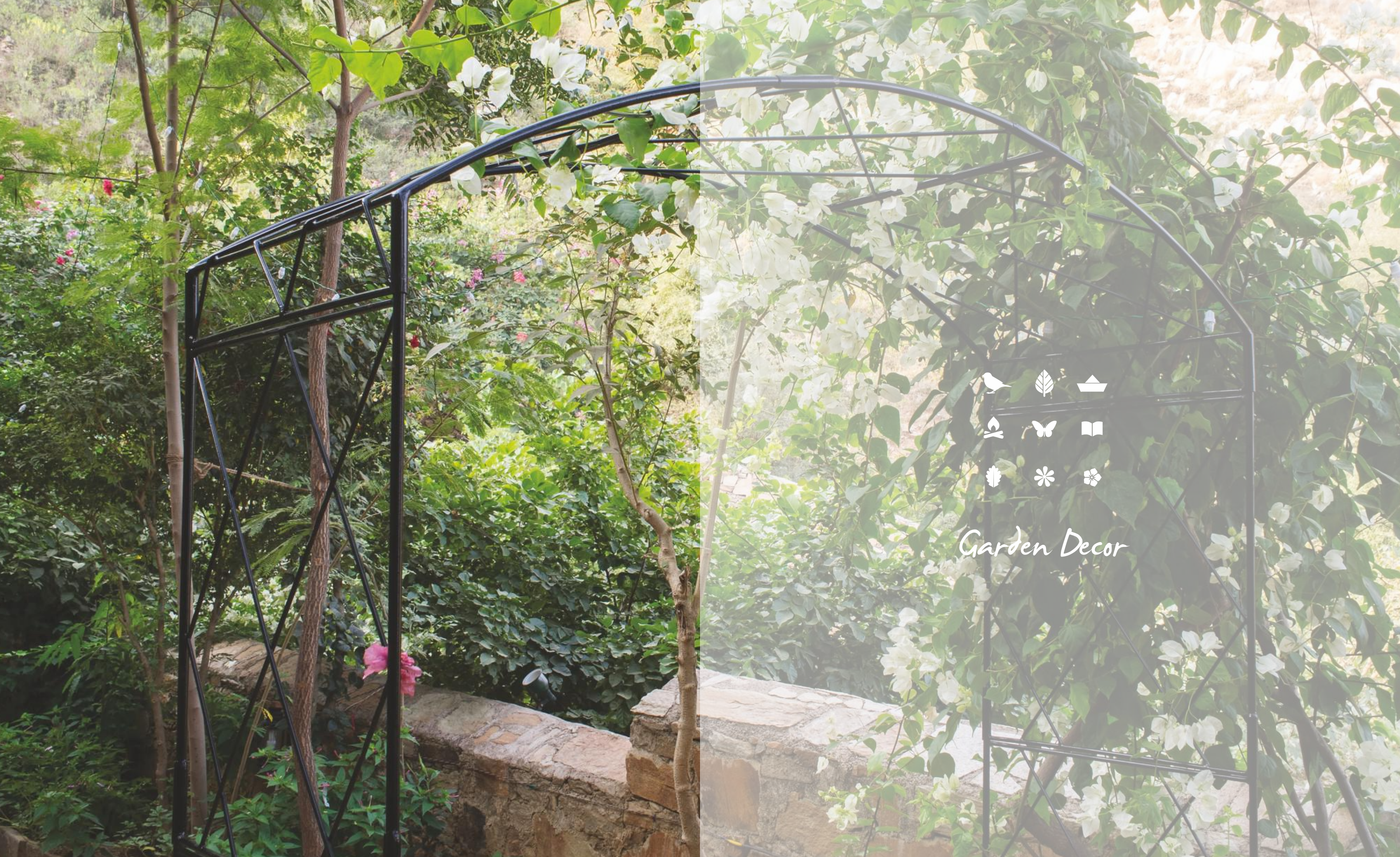
EarthGarden accessorises the memories you create in your home, making each moment beautiful, embellishing every story. We believe that a garden is not just a showcase of natural beauty, it is an escape from the hubbub of everyday stress. Whether you have a beautiful landscaped garden or a balcony, a expansive terrace or a quaint patio, indulge your green thumb. Our beautiful, handcrafted products let you create a green haven in any space.

We redefine the luxury of nurturing a garden. Our designs, inspired by Rajasthani Palaces, Indian Miniature paintings, Colonial architecture, European simplicity, traditional patterns, poetry, even Nature itself, feel right at home both indoors and outdoors. We are constantly re-visiting and re-imagining India's rich heritage of crafts and that is reflected in the playful elegance and delightful beauty of our every creation. New materials, new forms, new structures, new colours, are a source of continuous joy to us. We believe that each piece we create will be a solid but beautiful testimony to the perfection we are always striving to achieve. We never compromise on the quality of materials we use or the attention to detail and finish of every product we make. And because we want you to enjoy every moment you spend in your garden, without worrying about lost hooks or missing tealight glasses, most of our products come with extra hardware (or glass) so that you are always covered.

Every product we make is a labour of love, a love for beauty and nature and we hope that our products bring that joy into your home and garden.







*Garden Decor*





## Hayracks

When you say country living, it is impossible not to think of the English countryside with its rolling meadows and quaint village cottages. Our hayracks bring this quaint countryside to your home. Install them outside a window or under a balcony or even line them up along a low wall. Pair them up with our beautiful trellises to create your own fairytale world. With such a beautiful welcome, you will soon have birds serenading at your window! Lined with cocopeat, these hayracks are ready to use right out of the box. Just hang them up and start your garden.

### 1. Hayrack

Small - EG0001/A - 24" (w) x 9" (h) x 9.5" (d)  
Large - EG0001/B - 36" (w) x 9" (h) x 9.5" (d)  
Mild Steel, Black PVC coated

### 2. French Wall Trellis

Small - EG0002/A - 30" (w) x 35" (h) x 1.5" (d)  
Large - EG0002/B - 36" (w) x 42" (h) x 2" (d)  
Mild Steel, Black Powder Coated





### Wall Planters

When you say wall art, why do we all picture a painting or a wall hanging? What could be more beautiful than a lush green plant that subtly changes over time? With our wall planters, you can convert your love for gardening into art, literally. In sinous shapes that are feminine and elegant in their own right, these planters make the perfect homes for your home garden while occupying little space but making a statement. Available in two designs, they can brighten up any foyer or driveway.

1. Peacock Wall Planter  
EG0013/A - 12" (w) x 27"(h) x 8"(d) x 8" (cocoliner)  
Mild Steel, Black PVC coated

2. Spanish Wall Planter  
EG0012/A - 12" (w) x 23"(h) x 7"(d) x 7" (cocoliner)  
Mild Steel, Black PVC coated





*Here's an idea...  
why not pair these baskets  
with our lovely wall brackets?*



## Hanging Baskets

Some dreams are not of castles but of gardens in the air! Our hanging baskets are especially designed for those dreams! Beautifully hand crafted in mild steel with a rust resistant PVC coating, our baskets come ready with coco-liners so that you can start gardening right away. Our range of shapes and sizes give you the freedom create a whimsically personal hanging garden. Whether it is a balcony, a patio or even your kitchen, our baskets are sure to make heads turn, literally!

1. Conical - Set of 2  
EG0007/A - 12" (dia) x 18"(h) x 40"(ht. with chain)  
With coco-liner, Mild Steel, Black PVC coated

2. Tapered - Set of 2  
Small - EG0009/A - 12" (dia) x 8"(h) x 30"(ht. with chain)  
Large - EG0009/B - 15" (dia) x 9"(h) x 31"(ht. with chain)  
With coco-liner, Mild Steel, Black PVC coated

3. Round - Set of 2  
Small - EG0008/A - 12" (dia) x 8"(h) x 30"(ht. with chain)  
Medium - EG0008/B - 15" (dia) x 10"(h) x 32"(ht. with chain)  
Large - EG0008/C - 17" (dia) x 12"(h) x 34"(ht. with chain)  
With coco-liner, Mild Steel, Black PVC coated

4. Spanish  
EG0010/A - 12" (dia) x 7"(coco-liner) x 23"(full ht.)  
With coco-liner, Mild Steel, Black PVC coated

5. Peacock  
EG0011/A - 12" (dia) x 8"(coco-liner) x 27"(full ht.)  
With coco-liner, Mild Steel, Black PVC coated





### *Cascade Planters*

Everything looks grander in layers: multi-layered candelabras to wedding cakes... Planters are no different! You cannot go wrong with our handcrafted two- and three-tiered planters in mild steel with a rust resistant PVC coating, complete with coco liners. Treat each tier differently for a eclectic look. Will you go for herb+flower+flower combination or 3 different coloured flowers or an simple but elegant cascade of foliage? Raised on short, curved legs, our cascade planters will fit into any driveway or courtyard. Use it as a lawn centerpiece or a kitchen garden all on its own. Complement these planters with some of our hanging baskets or urns for a more dramatic effect.

1. Three Tier Cascade  
EG0004/B - 14" (dia) + 18"(dia) + 23"(dia) x 36"(full ht)  
With coco-liner, Mild Steel, Black PVC coated

2. Two Tier Cascade  
EG0004/A - 14" (dia) + 18"(dia) x 22"(full ht)  
With coco-liner, Mild Steel, Black PVC coated





## *Cradle Planters*

The cradle planters are literally that: a place to nurture, cherish and bring to life a beautiful bed of flowers or herbs or whatever your green thumb fancies. The cradles are beautiful lining a portico or even along a driveway. Top them up with flowers or pair them with hanging baskets. Since they are raised off the ground on curled legs, you could use them as space dividers at a garden party. These planters, inspired by the clean lines of classic french balcony railings, can bring the riviera right home to your garden.

Sturdily hand-crafted from high quality MS with PVC coating for rust resistance, these planters are elegant, easy to handle and a breeze to maintain. And what's more they come with the coco-liner already in place so that you can get right down to making them the centre of your oasis of greenery.

1. Cradle  
Small - EG0005/A - 30"(w) x 16" (h) x 16"(d) x 8"(coco-liner)  
Large - EG0005/B - 36"(w) x 21" (h) x 23"(d) x 12"(coco-liner)  
With coco-liner, Mild Steel, Black PVC coated





### Urns and Cauldrons

Yes, our urns and cauldrons can brew up some magic too! Colourful, fragrant, vibrant magic! With pre-installed coco-liners, all you need to do is throw in some saplings, a hint of water, sprinkle on some love and that's the recipe for your own little spot of wonder. Who needs Greek vases and marble sculptures when you can brighten up any space with these gorgeous planters? Each available in two sizes, the taller urns and lower cauldrons make perfect companions for a stairwell or driveway. Mix and match the two to create a flowery collage in your lawn or on your terrace.

1. Urn  
 Small - EG0006/A - 14" (dia) x 21"(h) x 18"(ht. of coco-liner)  
 Large - EG0006/B - 16" (dia) x 25"(h) x 19"(ht. of coco-liner)  
 With coco-liner, Mild Steel, Black PVC coated

2. Cauldron  
 Small - EG0003/A - 14" (dia) x 12"(h) x 22"(ht. with handle)  
 Large - EG0003/B - 16" (dia) x 15"(h) x 25"(ht. with handle)  
 With coco-liner, Mild Steel, Black PVC coated

3. Antique Brass Chimney Lantern  
 Small - EG0054/A - 6"(w) x 16"(ht. with handle) x 6"(d)





## *Etageres*

We all find ways to showcase our passions when we decorate our homes, we might have racks for our books, boxes for our music or shelves for our curios... What about your love for plants? You can only line up so many pots on the floor or a ledge or on the staircase. What you need is our etageres and plant stands. They are specially designed for you to show off your green thumb.

We also have rectangular, quarter rounds, with three shelves each, so that you can build a compact garden in virtually any space. Since they build upwards, they are also perfect for use against a garden wall creating an oasis of green around your lawn.

1. Rectangular  
EG0020/A - 40" (w) x 30"(h) x 24"(d)  
Mild Steel, Green Powder Coated

2. Quarter Round  
EG0021/A - 33" (w) x 30"(h) x 24"(d)  
Mild Steel, Green Powder Coated





*Here are some ways in which you can mix and match our etageres.  
On the left, we have a combination of a rectangular and two quarters.  
On the top and right, we have a combination of quarter etageres.*





## Pot Stands

Anyone who has a driveway or a garden path, knows how difficult it can be to do a thorough cleaning around plants and pots. That is why you need our pot stands. Our low rise pot stands give just the right clearance you need to let rainwater or even a hose do a proper cleaning of an outdoor floor but they are low enough not to disturb the look you have envisioned for your driveway or terrace garden. Available in two designs, a lovely Scroll design and a simple Cross design.

Get a Pivoting pot stand to add a bit of drama to your plant display. They are space saving and can hold upto 4 pots. In the corner of a staircase landing or as part of an ensemble cast of urns or cascades, these pot stands will make your plants look great!

1. Pivoting Plant Stand (4 pot holder)  
EG0027/A - 12" (dia) x 36"(h)  
Mild Steel, Green Powder Coated

2. Scroll Pot Stand - Set of 2  
Small - EG0032/A - 9" (dia) x 2"(h)  
Large - EG0032/B - 12" (dia) x 4"(h)  
Mild Steel, Black PVC coated

3. Cross Pot Stand - Set of 2  
Small - EG0031/A - 14" (dia) x 2"(h)  
Large - EG0031/B - 16" (dia) x 4"(h)  
Mild Steel, Black PVC coated





## Cachepots

Imagine that you've got a lovely courtyard or patio and you the perfect plant for the space and it comes in a very disappointing pot. Or you have a lovely wooden floor and you've got this sunlit greenery-filled room in mind, but you know the water from the pots is going to ruin your floor. What do you do? Its very simple really, you put the plant with its pot in a cachepot. A cachepot literally means 'a pot that hides' and our gorgeous cachepots do more than just hide. Elegant and understated, they will always complement the decor of any space and letting the beauty of the plant shine through.

Whether you choose the soft curve of the Lion design or the classic lines of the Copper Finial design, you are going to love how it makes your space and your plants look.

1. Copper Finial  
Small - EG0058/A - 12.5"(w) x 18.5"(h) x 12.5"(d)  
Large - EG0058/B - 16"(w) x 21.5"(h) x 16"(d)  
100% Brass, Antique Copper Finish

2. Lion  
Small - EG0057/A - 12"(dia) x 11"(h)  
Large - EG0057/B - 15"(dia) x 21"(h)  
100% Brass, Antique Bronze Finish





### *Bistro Bird Feeders*

When is a garden not a garden? When it has no bird song humming through its leaves. That is why every garden must have one of our Bistro bird feeders. Fill it up and you can rest easy for a while as it fills out the feeding tray as needed. The simple lantern like feeder, with a conical ridged cover, can be hung on a wall hook or a tree branch or just simply placed on a ledge. The feeders come in 3 colours that look beautiful together or individually. The glass body, makes them subtly unobtrusive while the colours add a hint of fun to the garden foliage.



Bistro Bird Feeder  
Green - EG0035/A/G - 11" (top dia) x 22"(ht. with hook)  
Yellow - EG0035/A/Y- 11" (top dia) x 22"(ht. with hook)  
Red - EG0035/A/R - 11" (top dia) x 22"(ht. with hook)  
100% Brass





### *Monet Arch/Arbor*

The straight lines of the Monet Arch belie an understated and elegant beauty. The criss-cross structure of the arch make a great base for any flowering vine. Getting married under a flowering arbor or simply strolling down a garden path, is there any reason one should feel more romantic than the other? We don't think so! With our Monet arch, you can create your own quaint garden entrances or pair it with a bench and voila! an instant quaint lawn focal.



1. Monet Arch / Arbor  
EG0014/A - 5ft (w) x 7ft(h) x 1.5ft(d)  
Mild Steel, Black Powder Coated, With Ground Stakes





### *Twining Leaf Arch/Arbor*

A walk in the garden is as indulgent an escape as a day in the spa, so adding an element of romantic beauty to the stroll is just a cherry on top. And our quirky twining leaf arches are nothing if not quaintly romantic. Whether intertwined with flowering vines on a garden path or paired up with a bench to make that perfect reading spot, the twining leaf design with its birds and leaves is sure to make you smile every time you spot one of our chirpy birds peeking through the foliage!



1. Twining Leaf Arch / Arbor  
EG0015/A - 5ft (w) x 8ft(h) x 1.5ft(d)  
Mild Steel, Black Powder Coated, With Ground Stakes





### *Rose Pillar*

Our flower pillars are the objets d'art for your garden. These free standing pillars look good during the day intertwined with flowering creeper and at night with a net of fairy lights creating a uniquely magical light source for your garden parties.

Available in two sizes, the pillars look gorgeous when placed together with two different flowers growing through them. They are very adaptable and look equally as sentries to your garden or as a perch for the birds near a bird feeder.

- 1. Rose Pillar
- Small - EG0019/A - 13"(dia) x 60"(h)
- Large - EG0019/B - 13"(dia) x 72"(h)
- Mild Steel, Black Powder Coated, With Ground Stakes





### Wall Trellises

The arched trellises are like french lace for your garden. The arched shape makes this trellis truly unique and beautiful especially combined with our hayrack and flowery creepers growing through. They are so versatile, they can be used on your garden wall or even indoors in a foyer above a credenza. The delicate curls of the trellis makes it beautiful with or without foliage around it.

Our quirky twining leaf trellises are nothing if not quaintly romantic. Intertwined with flowering vines on a wall or as a view cutter outside a window, the twining leaf design with its birds and leafs is sure to make you smile every time you spot one of our chirpy birds peeking through the foliage! This design is unsurprisingly one of our favourites, with just the right mix of fun and purpose.

1. French Wall Trellis  
Small - EG0002/A - 30"(w) x 35"(h) x 1.5"(d)  
Large - EG0002/B - 36"(w) x 42"(h) x 2"(d)  
Mild Steel, Black Powder Coated

2. Twining Leaf Trellis  
Small - EG0016/A - 30"(w) x 72"(h)  
Large - EG0016/B - 36"(w) x 84"(h)  
Mild Steel, Black Powder Coated





### *Fleur-de-lys Fence*

A design inspired by Versailles, this fence protects your flower beds and your lawns in splendid style. The distinct fleur-de-lys motif that tops this fence and gives it its name, coordinates perfectly with the mirroring spirals that form the body of the fence. These fences can be used along a garden path or around a delicate flower bed, never distracting from the flowers but beautiful in their own right.



Fleur-de-Lys Fence - Set of 2  
EG0061/A - 48"(w) x 18"(h)  
Mild Steel, Black Powder Coated



### *Eden Park Fence*

An elegant design of intersecting arches, this fence is subtle and unobtrusive. Its modern minimalism mixed with the classic arch shapes make this fence fit into any kind of architectural background. Section off your flowerbeds and lawn with these discrete edgers or line them along a track for an unusual garden path. At the low height of 1ft, their simple form ensures that the flowers and foliage behind them are never overshadowed.



Eden Park Fence - Set of 2  
EG0062/A - 36"(w) x 12"(h)  
Mild Steel, Black Powder Coated





## *Gazebo*

There's something very blissful about sipping tea in the morning under the dappled light of a tree, listening to the birds and smelling the morning roses. Our gazebos are the perfect companion to your perfect garden breakfast. In fact, they are so perfect they will even create the most romantic spot for a candle-light dinner. They look beautiful on their own, with fairy lights, with a delicate gauze draped through or even grown over with green foliage. The simple criss-cross detailing of the panels and the proud finial make for a subtly elegant combination. This is one must-have for every lawn or terrace garden.

Gazebo - Lattice  
EG0018/A - 90"(dia) x 96"(h)  
Mild Steel, Black Powder Coated





### *Swirl Hose Hanger*

Being practical and being beautiful are not mutually exclusive for our swirl hose hanger. A lovely arabesque pattern makes the perfect resting place for your garden hose when its work is done. Made in Aluminium with a black powder coating, these hose hangers are sturdy and rust-free. Hang it up on your garden wall and make even your utilities a feature to show off rather than to tuck away.



### *Wall Brackets*

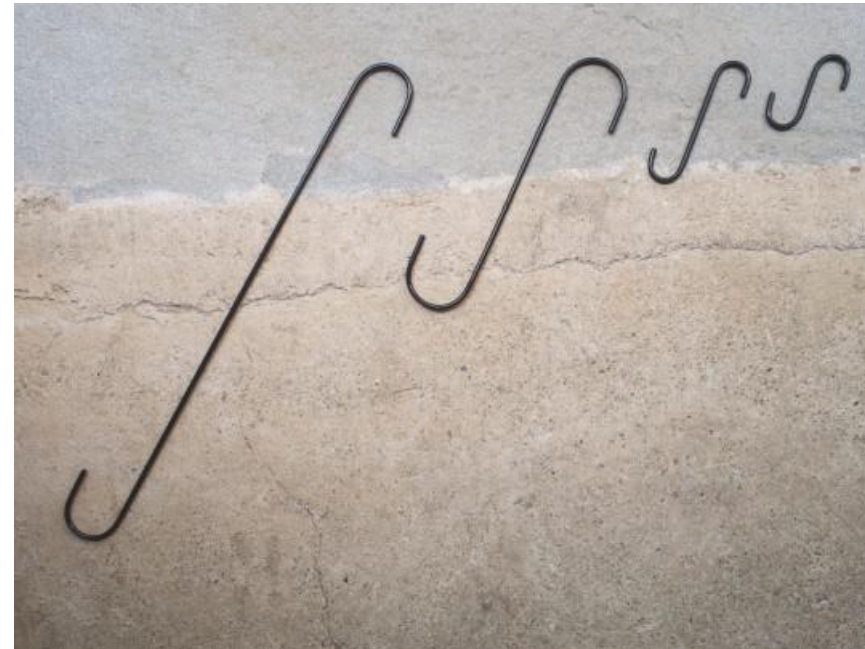
The fine details are what turn a space into a home. That is why we have put together a collections of supports that will have you covered whether you are decorating or gardening. Our versatile wall brackets are great for one of our hanging baskets or even a vintage clock. Available in two designs, they can adapt to any kind of interior or outdoor space.

1. Swirl Hose Hanger  
EG0040/A - 22"(w) x 12"(h) x 7"(d)  
100% Aluminium, Black Powder Coated

2. Greek Wall Bracket - Set of 2  
EG0052/A - 3.5"(w) x 10"(h) x 12"(d)  
100% Aluminium, Black Powder Coated

3. Scroll Wall Bracket - Set of 2  
EG0074/A - 1"(w) x 12"(h) x 12"(d)  
Mild Steel, Black Powder Coated





### *Stem Supports*

Some plants need that extra help to grow strong and we have the solution. Our stem supports are unobtrusive and sturdy and available in convenient heights so you will not have to worry about finding the right sticks or poles for your blossoms.



### *S hooks*

Our S-hooks, available in 4 lengths, can be attached to any ceiling hook or wall bracket making it easy to adjust the height at which the product hangs.

#### 1. Single Stem Supports

Small - EG-0025/A - 24"

Medium - EG-0025/B - 36"

Large - EG-0025/C - 48"

Mild Steel, Green Powder Coated

#### 2. S-Hooks

X Small - EG-0026/A - 4"

Small - EG-0026/B - 6"

Medium - EG-0026/C - 12"

Large - EG-0026/D - 24"

Mild Steel, Black Powder Coated









### *Antique Bronze Lantern*

There's nothing quite as heart-warming as the soft glow of a candle light in the night. And what a treat, if that light is softly diffused by a delicate metal lattice or a fun grid of windows or a simple frame! The antique bronze lanterns are great accessories not just because they are extremely versatile, completely at home both indoor and outdoor but they are also eye-catching and beautifully finished. Available in two size, they can be grouped together to make a welcoming centrepiece in your foyer or a dining table.



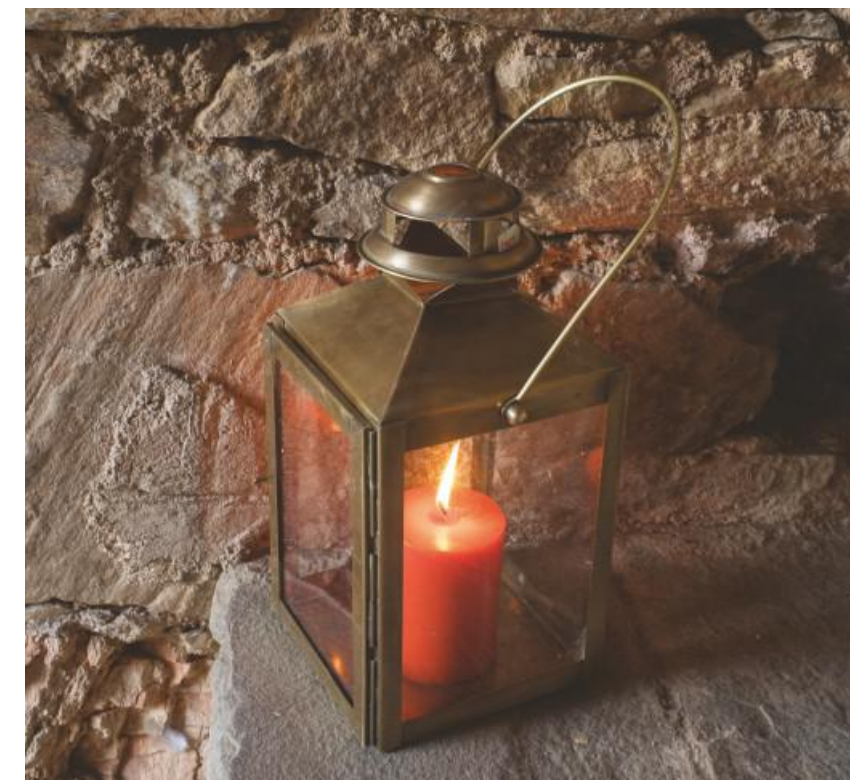
Antique Bronze Lantern  
Small - EG0053/A - 6"(w) x 11"(ht with handle) x 5"(d)  
Large - EG0053/B - 9"(w) x 17"(ht with handle) x 5"(d)  
100% Brass, Antique Bronze Finish





### *Antique Brass Chimney Lantern*

The Antique Brass Chimney Lantern is a perfect contemporary take on a quaint railway lantern, the familiar chimney shaped top complementing the straight simple frame for the candle. Indoor or Outdoor, these lanterns will make a great statement. Why not try using fairy lights instead of candles for a more eclectic scene? Whether you are hosting an outdoor wine and cheese on a winter evening or planning a romantic dinner for two on the terrace, our lanterns will set the tone for the evening.



Antique Brass Chimney Lantern  
Small - EG0054/A - 6"(w) x 16"(ht with handle) x 6"(d)  
Large - EG0054/B - 7"(w) x 20"(ht with handle) x 7"(d)  
100% Brass, Antique Brass Finish





### *Tapered Copper Lantern*

The tapered lanterns are a very modern take on the traditional glass dome lamps. Minimal lines, the strong line enhance the graceful structure and form and the almost invisible, elegantly curved glass dome, this lantern a timeless beauty. Whether you host a musical night in your terrace or a dinner party in your garden, these lanterns will make a great addition to the festivities.

Tapered Copper Lantern  
Small - EG0055/A - 6.5"(dia) x 16"(h)  
Large - EG0055/B - 8"(dia) x 21"(h)  
100% Brass, Antique Copper Finish





### *Moroccan Lanterns*

The Moroccan Lanterns with their dark frames cut out into delicate lattice patterns, carry a hint of the Bedouin world, a fantastical caravanserai. These lanterns are available in two patterns, that pair very well together, that cast a delicate lattice of shifting shadows reminiscent of a shifting sand dune or a desert zephyr. Give an exotic air to your garden soirees with these beauties.



1. Moroccan Lantern  
EG0056/A - 8"(6 sides) x 32"(ht with handle)  
100% Brass, Antique Bronze Finish

2. Moroccan Lantern  
EG0056/B - 8"(6 sides) x 32"(ht with handle)  
100% Brass, Antique Bronze Finish





### *Dutch Lanterns*

The Dutch lantern collection is one of our quirkiest designs, fun and yet beautiful. The architectural silhouette and adorable window cutouts create a tableau of hearty warmth. The inner child in you will just love its doll house vibe and the gorgeous golden glow that makes this lantern such a visually stunning accessory. If you are putting together an evening with close friends and family, with laughter and stories around the campfire, these lanterns are going to be your best companions!

Dutch Lantern  
Small - EG0064/A - 6.5"(w) x 14.5"(ht with handle) x 4"(d)  
Large - EG0064/B - 9"(w) x 18"(ht with handle) x 5.5"(d)  
Outside - Galvanised Steel, Inside - Gold Finish





### *Firepit*

Who doesn't love a winter evening around a fire with friends and family, stories and laughter, music and a good old barbecue? With our simple and elegant firepits, you can create your own winter getaway. Put a grill on top and turn it into a mini barbecue...Our Firepits feature extra-thick 100% Brass basins and sturdy Mild Steel grate and stand



- 1. Firepit  
EG0034/A - 25"(dia) x 9"(h)  
100% Brass Bowl, Shiny Brass Finish  
Mild Steel Grate and Stand, Black Powder Coated
- 2. Willow Chair - Set of 2  
EG0022/A - 17"(w) x 32"(full ht.), 16"(seat ht.) x 18"(d)  
Mild Steel, Black Powder Coated





## Oil Lamps

There is something truly exotic and magical about an oil lamp. Perhaps it is the stories of genies we grew up on or just the thought of faraway royalty but an oil lamp always brings its own atmosphere with it. Our lamps infuse that magic into your garden or courtyard. Use them on a table or ledge or raise them on our specially designed stakes to create a pathway in your garden or a circle of light around a barbecue. Our broad bottom basic lamps bring a whiff of the arabian oasis to your garden while the lotus lamps, slender and feminine could be straight out of an ancient rajasthani royal camp. If you like the idea of lamps on stakes but prefer to use candles, then our leaf stakes are the answer. Inspired by an illustration of a leaf, these candle stakes are lattice-like and classic. Line up these stakes in your garden or even in a row of pots along your terrace to create an eclectic, magical ambience.

1. Lotus Oil Lamp  
EG0037/A - 6"(dia) x 4"(h)  
100% Brass, Antique Brass Finish

2. Basic Oil Lamp  
Small - EG0036/A - 4"(dia) x 3.5"(h)  
Large - EG0036/B - 6"(dia) x 4"(h)  
100% Brass, Antique Copper Finish





*Lamp and Candle Stakes*

1. Basic Oil Lamp Torch/Stake  
EG0036/C - Lamp: 6"(dia) x 4"(h), Stake: 66"(h)  
Lamp - 100% Brass, Antique Copper Finish  
Stake - 100% Iron, Black Powder Coated

2. Lotus Oil Lamp Torch/Stake  
EG0037/B - Lamp: 3.75"(dia) x 6.5"(h), Stake: 60"(h)  
Lamp - 100% Brass, Antique Brass Finish  
Stake - 100% Brass, Black Powder Coated

3. Leaf Candle Tea light Stake  
EG0039/A - 6"(w) x 50"(h) x 3.25"(d)  
Aluminium and Mild Steel, Black Powder Coated





### Maple Leaf Collection

Whether you are hosting a large christmas dinner or just a romantic candlelight for two, you need that centerpiece that will bring the table together. Our Maple leaf candle holders are just the ticket for your hosting needs. They are designed for single pillar candles as well as 3 candles. You can also get wall scones in this delicate old world design with the leaves protectively wrapping around the glass just as the warm glow of candle light wraps around your dinner table. The 100% brass candle holders are finished in antique bronze finish to turn your home into a castle.

1. Maple Leaf - Wall Scone  
EG0049/C - 4.25"(dia) x 16"(h) x 5"(d)  
100% Brass, Antique Bronze Finish

2. Maple Leaf - Single Pillar Holder  
EG0049/A - 8"(w) x 2.5"(h) x 4"(d)  
100% Brass, Antique Bronze Finish

3. Maple Leaf - Three Pillar Holder  
EG0049/B - 19"(w) x 3"(h) x 9"(d)  
100% Brass, Antique Bronze Finish



1

## Traditional Candle Holder Set of 3



### *Traditional Pillar Candle Holders*

Sometimes the only thing you need to create a warm cozy home, is a few scented candles, some hot chocolate and soft jazz. Our candle holders inspired by vintage furniture and architecture, take the curvaceous shapes and cast them in 100% brass with an Antique bronze finish to give you that old world charm that is subtle and elegant.



### *Leaf Glass Votives*

Brighten up your party or just an evening at home with these candle votives in 3 colours, clear burgundy, opalescent champagne and mystic black. The soft glow of color and leafy pattern of these votives blend in with any flower arrangement you put up around them.

1. Traditional Pillar Candle Holder - Set of 3  
EG0059/A -  
100% Brass, Antique Bronze Finish

2. Leaf Glass Votives - Set of 3 (assorted colours)  
EG0028/A - 2.5"(dia) x 3.5"(h)  
POT Colour Glass, Red/White/Black





### *Scroll Tea light Holders*

Our tiered table candle holders are inspired by the layered chandeliers in medieval castles. They exude the same air of royal opulence. Raised on short curled legs, these holders are designed in one or two tiers giving you the choice to create a low table centrepiece or a taller focal for a sideboard. Whether it is the festive season or a dinner party, these lovely candle stands are sure to make an impression.



1. Scroll Tealight Holder - Two Tier  
EG0048/A -  
100% Brass, Antique Brass Finish

2. Scroll Tealight Holder - Single Tier  
EG0047/A - 11"(dia) x 4"(h)  
100% Brass, Antique Brass Finish





### *Plant Creeper and Tealight Holder*

This most ingenious garden accessory brings the best of both worlds together. It is a tea light holder and a beautiful pillar for a leafy creeper. Set them up in your garden or create a corner in your terrace, let the leaves grow through and you are ready indulge yourself or dazzle your guests with magical faerie-like ambience of twinkling candlelight glittering through the green foliage. These beauties are available in two size 2ft and 3 ft high able to hold 6 and 12 candles respectively. With or without the creepers, the spiralling slender lines of these pillars are beautiful and make them great additions to your garden or indoor decor.

Plant Creeper and Tealight Holder  
Small (6 tealights) - EG0046/A - 9"(dia) x 23"(h)  
Large (12 tealights) - EG0046/B - 13"(dia) x 37"(h)





### Coir Doormats

Our doormats are made of 100% Natural Coir and printed with lovely patterns. We are very particular about consistency of feel and colour across our products, so that you get a product that looks and feels good. These coir mats are designed to be used in an indoor/outdoor space and can withstand the vagaries of the weather whether it is humidity of the monsoons or heat of the summers. Available in four designs to suit different kinds of architecture / interiors: the petals design, summery and light; the paisley birds, chirpy and welcoming; the medallion, cool and elegant; the birch leaves, modern and graphic. Take your pick of the collection to suit your space and you will love how the burst of color they bring to it!

1. Medallion  
EG0071/A - 18" x 30"  
100% Coir, Printed

2. Birch Leaves  
EG0071/B - 18" x 30"  
100% Coir, Printed

3. Bird Paisley  
EG0071/C - 18" x 30"  
100% Coir, Printed

4. Petals  
EG0071/D - 18" x 30"  
100% Coir, Printed





*Furniture*





### *Parisian Park Furniture*

Sipping coffee in a cafe overlooking the Seine in the spring sun is one of the best things to do in Paris. Bring part of that experience into your garden with our Parisian Table and Chairs. Perfect in any terrace, garden or backyard, this set in mild steel powder-coated white, makes a light and comfortable corner for morning breakfast or reading a book in the evening. You can now create a little bistro in your own backyard with this conveniently foldable furniture. Set them around one of our firepits for a comfortable and stylish barbecue night.

1. Parisian Park Set - 1 Table and 2 Chairs  
EG0023/A - Chair - 16"(w) x 34"(h), 18"(seat ht.) x 15"(d)  
Table - 30"(w) x 28"(h) x 30"(d)  
Mild Steel, White Powder Coated





### *Eden Park Bench*

A garden bench is a lovely accessory whether indoor or outdoor. Outdoors, a bench is the perfect sit down for a bit of reading or a iced-tea break from a morning of gardening. Indoors, a bench is an eclectic wild card that adds a quirky element of fun to any kind of decor. Our eden park bench, with its intersecting arches on the back and the curved stripes on the seat, is an elegant and comfortable addition to any garden or interior.



### *Willow Chairs*

The willow chairs are comfortable and adaptable, at home beside the firepit or around a kitchen table. The stripes of mild steel trace the shape of the human form making this chair ergonomically perfect for a relaxed seating and beautiful to look at. Throw in a bright cushion and you are all set.

1. Eden Park Bench  
EG0065/A - 48"(w) x 39"(h), 15"(seat ht.) x 22"(d)  
100% Iron, Black Powder Coated

2. Willow Chairs - Set of 2  
EG0022/A - 17"(w) x 32"(h), 16"(seat ht.) x 18"(d)  
Mild Steel, Black Powder Coated





*Home Decor*





### *Window Sill Planter Tray*

Whether you love cooking or gardening, this is one thing, you will definitely want: a herb garden on your window sill! A tray with three square planters, you can fill them up with coriander, basil, mint or even a small flowering plant to bring color into your kitchen or even your office table. It is a great gift for an office colleague or a house warming party!



1. Window Sill Planter Tray - 3 Square Pots  
EG0063/A - 17.5"(w) x 3.25"(h), 5"(d)  
100% Brass, Antique Copper Finish





### *Wooden Bowls*

Every party starts with nibbles and an icebreaker. Our nibble bowls and salad dishes take care of both! They are so striking, they are definitely going to get the conversation started while also dispensing the snacks in style. These bowls are made of teak with brass inlay detailing giving them extra oomph. We have a range of nibble, salad and fruit bowls with slightly different detailing so that you can mix and match them easily.



1. Fruit Bowl  
EG0029/B - 9"(dia) x 5"(h)  
Wood and Brass

2. Nibble Bowls - Set of 2  
EG0029/A - 5"(dia) x 3"(h)  
Wood and Brass

3. Salad Bowl  
EG0030/A - 10"(dia) x 5"(h)  
Pure Teak Wood and Brass, Natural Teal Finish





### *Objets d'art*

The difference between a house and a home is all the little things that add personality to the decor. It might be a funny picture on the wall or a whimsical door stopper, just like our chair and bench stoppers. Or add a couple of our duck sculptures to your mantelpiece or window sill. Why not take this quirky side of you to work? Use the doorstops as book ends in your study or the ducks as paperweights on your work table.

1. Ducks - Set of 2  
EG0042/A - 11"(w) x 6"(h) x 4"(d)  
100% Brass, Antique Bronze Finish

2. Bench Door Stopper / Bookend  
EG0043/A - 8.5"(w) x 7.25"(h) x 4.25"(d)  
Cast Iron, Copperish Powder Coated

3. Chair Door Stopper / Bookend  
EG0044/A - 4.5"(w) x 8"(h) x 6"(d)  
Cast Iron, Copperish Powder Coated





## Pillar Candles and Tealights

1. Pillar Candle - Unscented  
Small - EG0076/A - 3"(dia) x 3"(h)  
Large - EG0076/B - 3"(dia) x 4"(h)  
Paraffin Wax
2. Pillar Candle - Orange Scented  
Small - EG0079/A - 3"(dia) x 3"(h)  
Large - EG0079/B - 3"(dia) x 4"(h)  
Paraffin Wax
3. Pillar Candle - French Vanilla Scented  
Small - EG0078/A - 3"(dia) x 3"(h)  
Large - EG0078/B - 3"(dia) x 4"(h)  
Paraffin Wax
4. Pillar Candle - Lemon Grass Scented  
Small - EG0077/A - 3"(dia) x 3"(h)  
Large - EG0077/B - 3"(dia) x 4"(h)  
Paraffin Wax
5. Tealights - Unscented - Set of 50  
EG0072/A - 7.5"(w) x 1.25"(h) x 7.5"(d)  
Paraffin Wax



Hailing from Jodhpur a.k.a. "The Blue City" in the state of Rajasthan, India, I grew up in a neighbourhood surrounded with impressions echoing the Hindu, Islamic and Colonial architecture. It was impossible to ignore the frescoes, carved scallops, ornate sculptures, lattice and paintings staring me in the face. Jharokhas (stone windows), Chhatris (elevated pavilions), baolis (stepwells), Havelis (mansions), jaalis (latticed screens) and spacious patios were my silent companions while flying kites, skating, playing lacrosse and climbing trees.

Over a period of time, I became aware of the various textures, hues and shapes that were all mine to explore. With my passion for Decor, I set out to learn this art of expression armed with initiative, talent and a desire for excellence. These childhood impressions found expression in designing, arranging, shaping and styling products using glass, wood, metal, beads and fabric.

As I developed concepts and worked closely with artisans revising varied Home & Garden products, I realized that it satisfied my creative core and slaked my thirst for perfection. Soon, I started exploring platforms to display my artifacts. I found the market inadequate in terms of outdoor home and garden products and this led me to conceptualize and float "EarthGarden".

Even after 25 years of work behind me, nothing gives me more JOY than watching my "pieces" silently decorate people's homes and speakingly beautify their lives!!!

Kamal Badia  
Director





[www.earthgarden.in](http://www.earthgarden.in)

**Earth Garden**  
Cherishing Nature & Home

by

**Envision Home & Garden Co (P) Ltd**  
Unit 31, Sector 7, IMT Manesar  
Gurgaon - 122050, Haryana, India

T: +91 124 4369223/ 4369224  
M: +91 98100 24271  
E: [connect@earthgarden.in](mailto:connect@earthgarden.in)