

Dimensions & Specifications

Cable Throttle Version

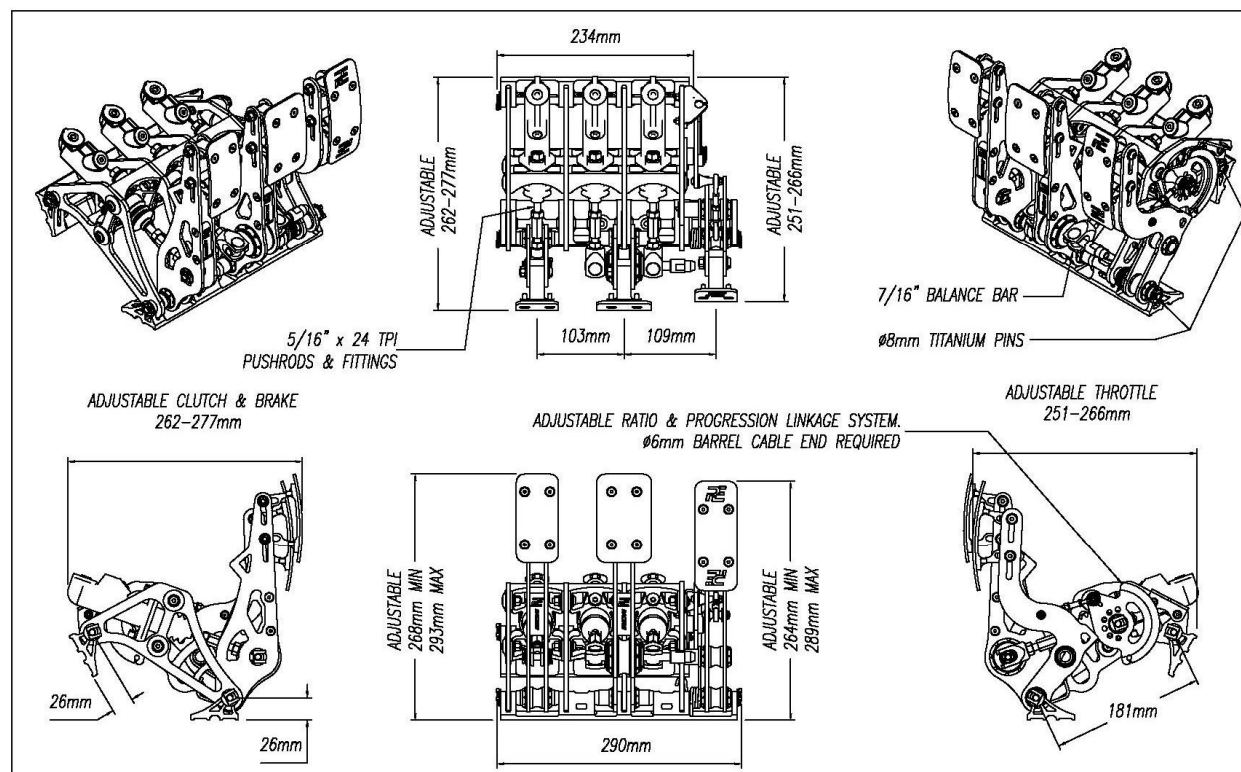
SPECIFICATIONS

- Materials : 6061-T6 Billet Construction
- Finish: Anodised in Black & Clear
- Master Cylinders: Alloy Construction with 34.9mm stroke (1.375")
- Mounting Location: Floor and Firewall, or Floor and Bulkhead
- Reservoir Capacity: 3 off Remote mounted Plastic with 105cc Fluid Capacity each
- Reservoir Dimensions: 76.2mm (3") diameter and 88.9mm (3.5") high
- Hydraulic Feed Lines: Teflon lined Stainless Braided Hose AN-4 Fittings
- Fixings: Stainless Steel
- Throttle Torsion Spring: Stainless Steel
- Pins : Titanium Gr2
- Net Weight: 6lb 2oz (2.79kg)
- Gross Weight: 9lb 9oz (4.3kg)
Including Master Cylinders, Balance Bar, Throttle Linkage Kit & Fittings
- Pedal Ratio: Adjustable 3.93:1 to 4.46:1



Safe Working Loads

- Clutch Pedal Force 90kg (138 Lb or 883 N)
- Brake Pedal Force 160kg (352 Lb or 1570 N)
- Throttle Pedal Force 50kg (110 Lb or 490 N)
- Throttle Cable Force 10kg (22 Lb or 98 N)
- Return Spring Force 5kg (11 Lb or 50 N)



PE Racing 3 Pedal Billet Pedal Box

PE-006-1001

Dimensions & Specifications

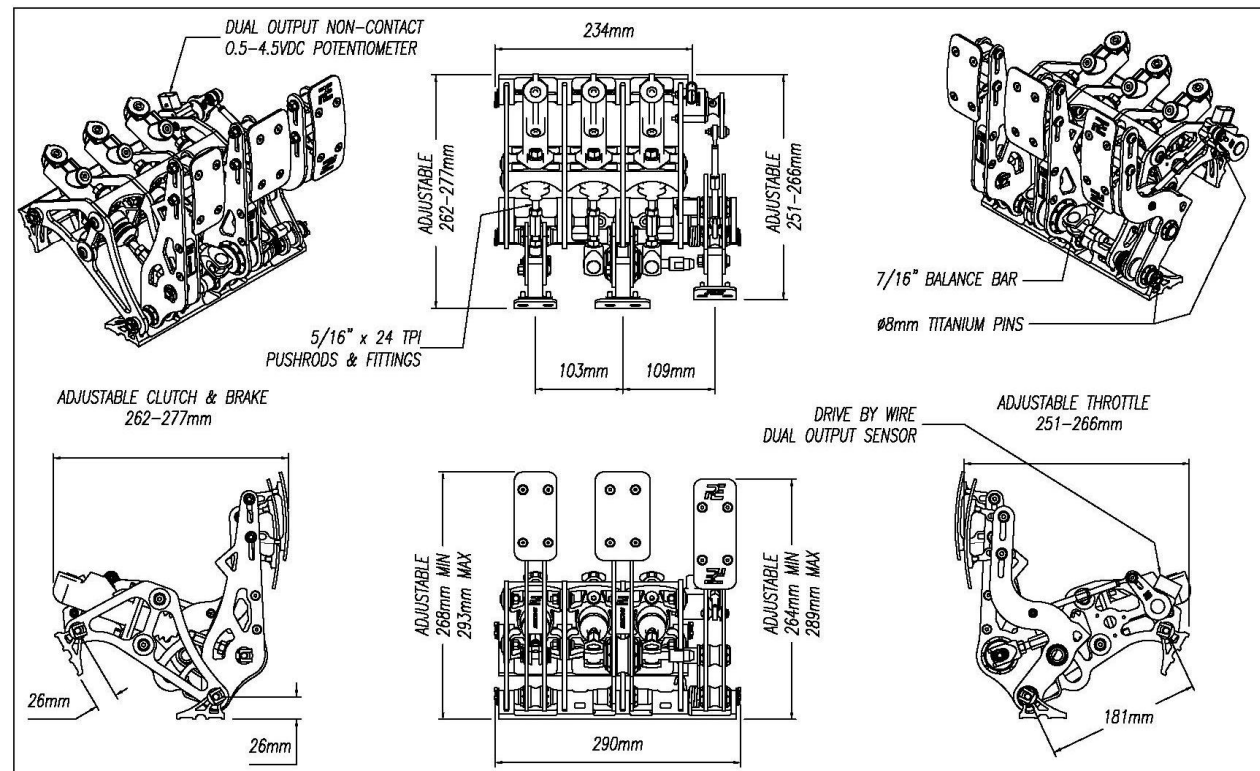
Drive by Wire Throttle Version

SPECIFICATIONS

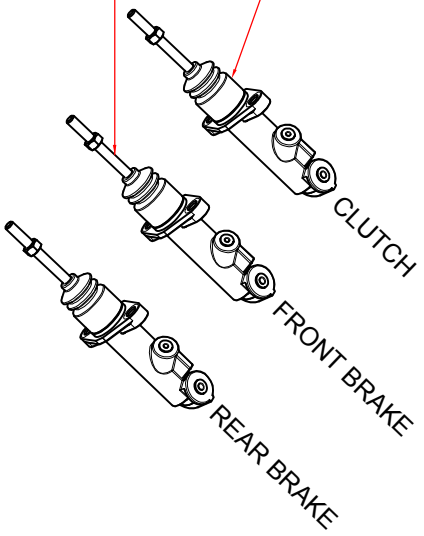
- Materials : 6061-T6 Billet Construction
- Finish: Anodised in Black & Clear
- Master Cylinders: Alloy Construction with 34.9mm stroke (1.375")
- Mounting Location: Floor and Firewall, or Floor and Bulkhead
- Reservoir Capacity: 3 off Remote mounted Plastic with 105cc Fluid Capacity each
- Reservoir Dimensions: 76.2mm (3") diameter and 88.9mm (3.5") high
- Hydraulic Feed Lines: Teflon lined Stainless Braided Hose AN-4 Fittings
- Fixings: Stainless Steel
- Throttle Torsion Spring: Stainless Steel
- Pins : Titanium Gr2
- Net Weight: 6lb 2oz (2.79kg)
- Gross Weight: 9lb 9oz (4.3kg) Including Master Cylinders, Balance Bar, DBW Linkage Kit & Fittings
- Pedal Ratio: Adjustable 3.93:1 to 4.46:1
- Dual Output Throttle Position Sensor, Non-Contact 180°, Input $5V \pm 0.25V$ DC, Output 0.5 V - 4.5V DC

Safe Working Loads

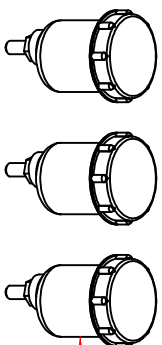
- Clutch Pedal Force 90kg (138 Lb or 883 N)
- Brake Pedal Force 160kg (352 Lb or 1570 N)
- Throttle Pedal Force 50kg (110 Lb or 490 N)
- Return Spring Force 5kg (11 Lb or 50 N)



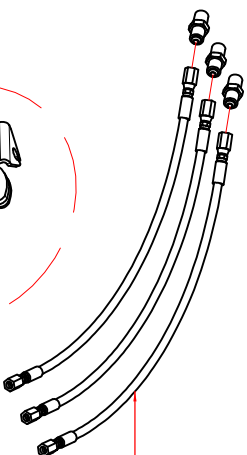
STANDARD KIT FITTED WITH:
 CLUTCH 0.75"
 FRONT BRAKE 0.625"
 REAR BRAKE 0.75"



5 PE-001-4006



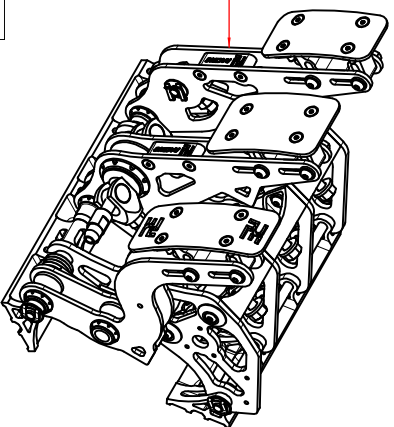
PE-001-4009 8



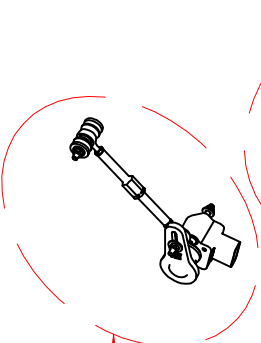
PE-001-4008 7



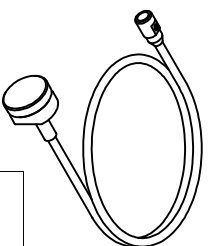
PE-005-4010 9
 CABLE THROTTLE



1 PE-005-4000



PE-006-4010 10
 FBW THROTTLE



PE-001-4007 6

SPARE PARTS (CABLE & DRIVE BY WIRE THROTTLE VERSIONS)			
ITEM	DESCRIPTION	ASSY PART NUMBER	QTY
1	COMPLETE FRAME ASSY	PE-005-4000	1
5	MASTER CYLINDERS	PE-001-4006	3
6	BIAS ADJUSTER CABLE	PE-001-4007	1
7	RESERVOIR HOSE & FITTING	PE-001-4008	3
8	FLUID RESERVOIRS	PE-001-4009	3
9	CABLE THROTTLE LINKAGE ASSY	PE-005-4010	1
10	FBW THROTTLE LINKAGE ASSY	PE-006-4010	1

MASTER CYLINDER DESIGNATION						
PART NUMBER	BORE	STROKE	INLET PORT	OUTLET PORT	AREA IN ²	VOLUME IN ³
PE-001-3039	0.625"	1.375"	AN.4 7/16" x 20 TPI	AN.3 3/8" x 24 TPI	0.307	0.422
PE-001-3040	0.7"	1.375"	AN.4 7/16" x 20 TPI	AN.3 3/8" x 24 TPI	0.365	0.529
PE-001-3041	0.75"	1.375"	AN.4 7/16" x 20 TPI	AN.3 3/8" x 24 TPI	0.442	0.607