

PE Racing 2 Pedal Billet Pedal Box

PE-007-1001

Dimensions & Specifications

Cable Throttle Version

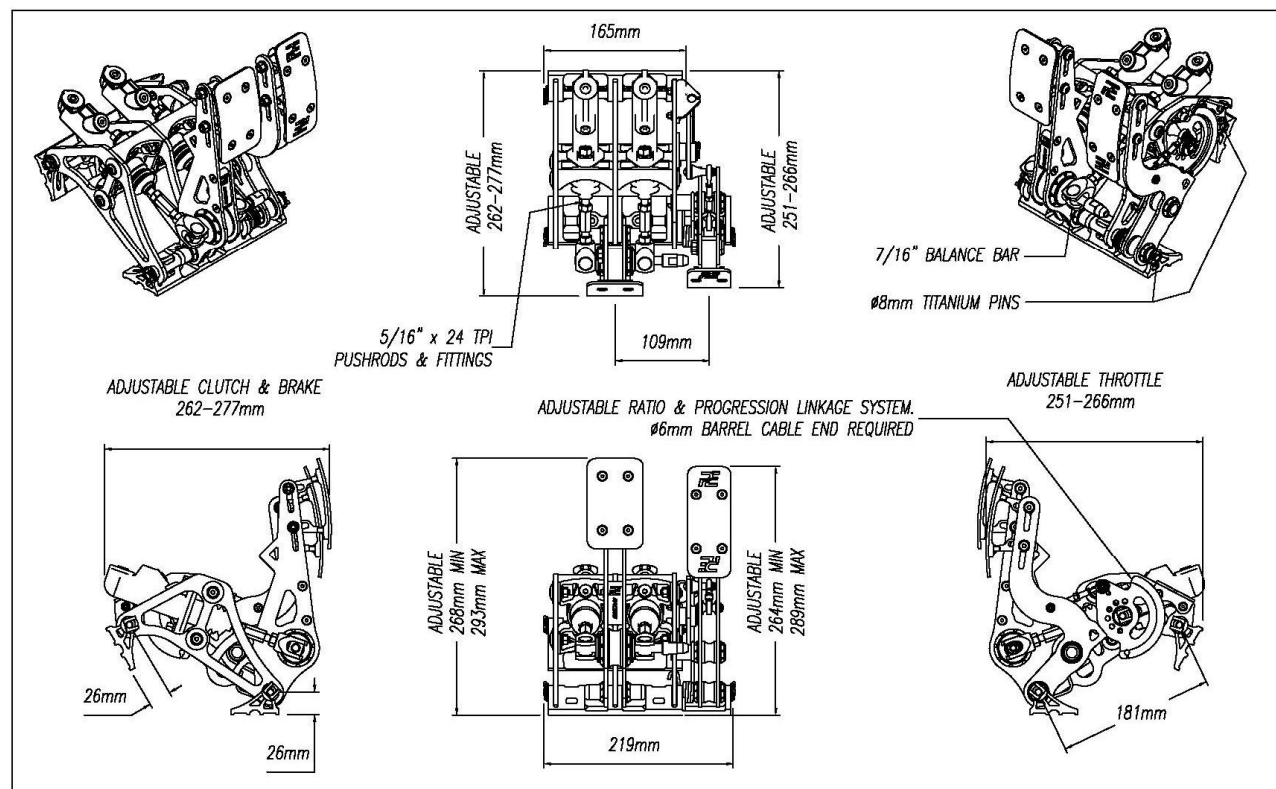
SPECIFICATIONS

- Materials : 6061-T6 Billet Construction
- Finish: Anodised in Black & Clear
- Master Cylinders: Alloy Construction with 34.9mm stroke (1.375")
- Mounting Location: Floor and Firewall, or Floor and Bulkhead
- Reservoir Capacity: 2 off Remote mounted Plastic with 105cc Fluid Capacity each
- Reservoir Dimensions: 76.2mm (3") diameter and 88.9mm (3.5") high
- Hydraulic Feed Lines: Teflon lined Stainless Braided Hose AN-4 Fittings
- Fixings: Stainless Steel
- Throttle Torsion Spring: Stainless Steel
- Pins : Titanium Gr2
- Net Weight: 4lb 4oz (1.92kg)
- Gross Weight: 6lb 12oz (3.06kg) Including Master Cylinders, Balance Bar, Throttle Linkage Kit & Fittings
- Pedal Ratio: Adjustable 3.93:1 to 4.46:1



Safe Working Loads

- Brake Pedal Force 160kg (352 Lb or 1570 N)
- Throttle Pedal Force 50kg (110 Lb or 490 N)
- Throttle Cable Force 10kg (22 Lb or 98 N)
- Return Spring Force 5kg (11 Lb or 50 N)



PE Racing 2 Pedal Billet Pedal Box

PE-008-1001

Dimensions & Specifications

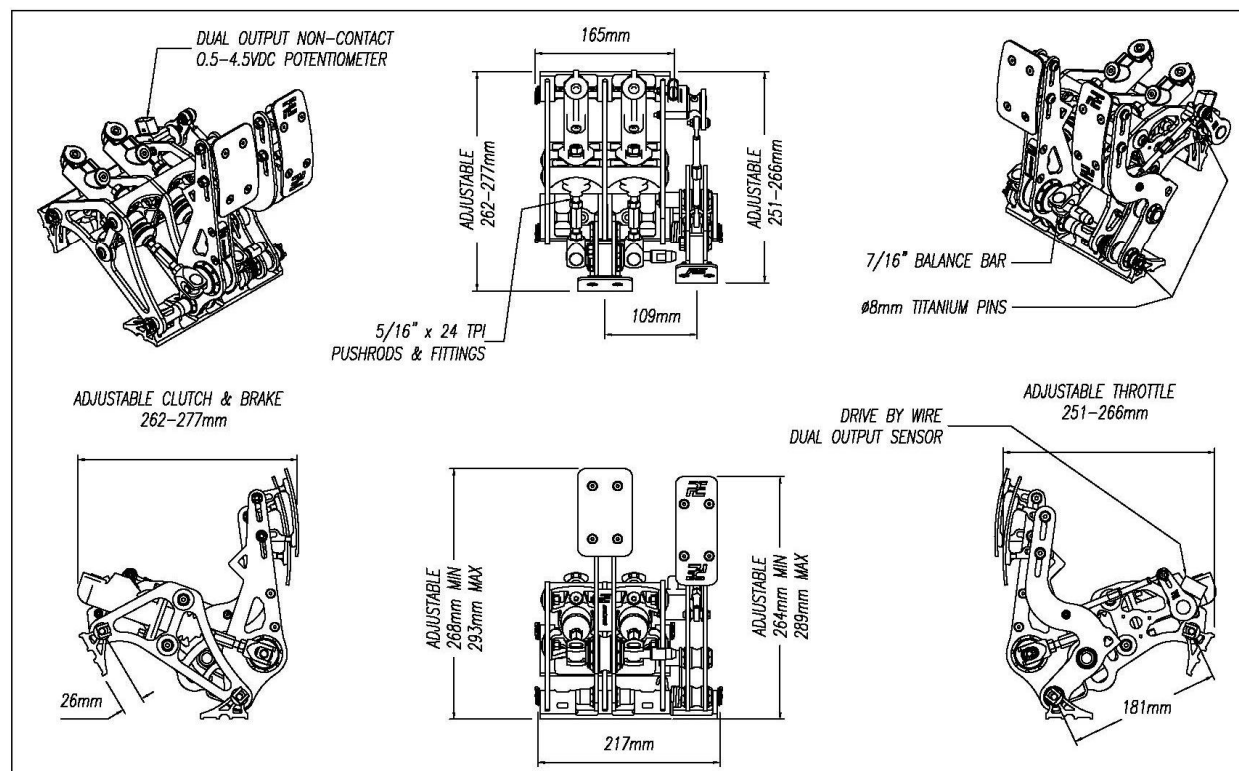
Drive by Wire Throttle Version

SPECIFICATIONS

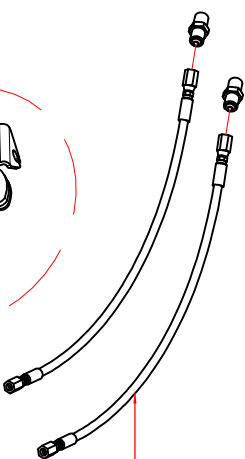
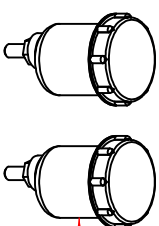
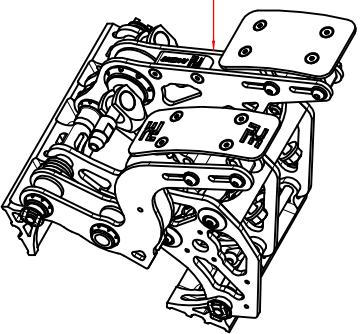
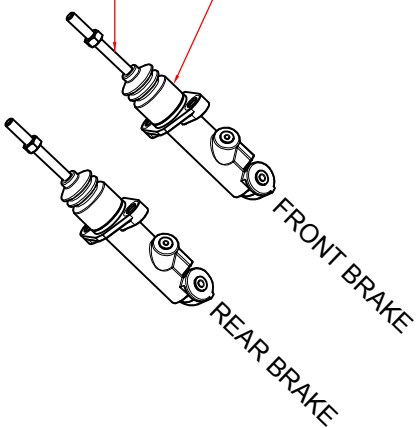
- Materials : 6061-T6 Billet Construction
- Finish: Anodised in Black & Clear
- Master Cylinders: Alloy Construction with 34.9mm stroke (1.375")
- Mounting Location: Floor and Firewall, or Floor and Bulkhead
- Reservoir Capacity: 2 off Remote mounted Plastic with 105cc Fluid Capacity each
- Reservoir Dimensions: 76.2mm (3") diameter and 88.9mm (3.5") high
- Hydraulic Feed Lines: Teflon lined Stainless Braided Hose AN-4 Fittings
- Fixings: Stainless Steel
- Throttle Torsion Spring: Stainless Steel
- Pins : Titanium Gr2
- Net Weight: 4lb 4oz (1.92kg)
- Gross Weight: 6lb 12oz (3.06kg) Incl. Master Cylinders, Balance Bar, DBW Linkage Kit & Fittings
- Pedal Ratio: Adjustable 3.93:1 to 4.46:1

Safe Working Loads

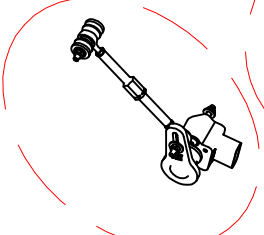
- Brake Pedal Force 160kg (352 Lb or 1570 N)
- Throttle Pedal Force 50kg (110 Lb or 490 N)
- Return Spring Force 5kg (11 Lb or 50 N)



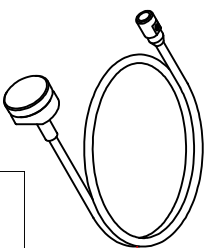
STANDARD KIT FITTED WITH:
FRONT BRAKE 0.625"
REAR BRAKE 0.75"



CABLE THROTTLE



FBW THROTTLE



SPARE PARTS (CABLE & DRIVE BY WIRE THROTTLE VERSIONS)			
ITEM	DESCRIPTION	ASSY PART NUMBER	QTY
1	COMPLETE FRAME ASSY	PE-007-4000	1
5	MASTER CYLINDERS	PE-001-4006	2
6	BIAS ADJUSTER CABLE	PE-001-4007	1
7	RESERVOIR HOSE & FITTING	PE-001-4008	2
8	FLUID RESERVOIRS	PE-001-4009	2
9	CABLE THROTTLE LINKAGE ASSY	PE-005-4010	1
10	FBW THROTTLE LINKAGE ASSY	PE-006-4010	1

MASTER CYLINDER DESIGNATION					
PART NUMBER	BORE	STROKE	INLET PORT	OUTLET PORT	AREA IN²
PE-001-3039	0.625"	1.375"	AN-4 7/16" x 20 TPI	AN-3 3/8" x 24 TPI	0.307
PE-001-3040	0.7"	1.375"	AN-4 7/16" x 20 TPI	AN-3 3/8" x 24 TPI	0.365
PE-001-3041	0.75"	1.375"	AN-4 7/16" x 20 TPI	AN-3 3/8" x 24 TPI	0.442