



GROVTEC
FIREARMS ACCESSORIES

2023



MADE IN USA



GROVTEC.COM

503.557.4689

INFO@GROVTEC.COM

23555 NE HALSEY STREET

WOOD VILLAGE, OREGON 97060

C O N T E N T S

NEW PRODUCTS — 03-06

RAIL WRAPS
TUBE MOUNT RAIL
JAM NUT FOR MUZZLE DEVICES
STRATA QS TREK SLINGS
STRATA TRAIL PACK HOLSTERS

SWIVEL SETS — 08-11

LOCKING SWIVELS
SWIVEL SETS BY FIREARM
NON-DETACHABLE SETS
SHOTGUN SWIVEL SETS
SHOTGUN MAGAZINE CAPS
SHOTGUN SIDE MOUNTS

BARREL BANDS & — 12-13 HAMMER EXTENSIONS

BARREL BAND SWIVEL SETS
HAMMER EXTENSIONS

SLINGS — 14-15

QS TREK
QS FLEX
QS MOLLE
AMMO CARTRIDGE
PADDED
UTILITY
BALANCE POINT
MOUNTAINEER

HOLSTERS — 16-17

TRAIL PACK ERGONOMIC
TRAIL PACK
INSIDE-THE-PANT
MULTI-FIT

AMMO HOLDERS — 18

BUTTSTOCK AMMO HOLDERS
BELT SLIDE AMMO HOLDERS
PADDED COMB RISER

PUSH BUTTONS — 20-21

PUSH BUTTON SWIVELS
PUSH BUTTON BASES
TRI-BASE BUFFER TUBE MOUNT
HOLLOW STOCK BASE
BASE ADAPTORS
STUD TO BASE ADAPTORS

ADAPTORS — 22-23

MULTI-ADAPTORS
SNAP HOOK ADAPTORS
M-LOK® & KEYMOD® MOUNTS
SWIVEL STUD ADAPTORS
SIDE RIDER MOUNTS
PICATINNY RAIL ADAPTORS
BIPOD ADAPTORS

HAND STOP & RAILS — 24-25

G-STOP HAND STOP
TUBE MOUNT RAILS
SHOTGUN MTMx3 MOUNT
PICATINNY RAILS
PAR 45 ANGLED PICATINNY RAIL

MUZZLE DEVICES — 26

G-COMP COMPENSATORS
G-NITE FLASH HIDERS
THREAD PROTECTORS
THREAD CONVERTER
JAM NUTS FOR MUZZLE DEVICES
CRUSH WASHER PACKS

RAIL WRAPS — 27

RAIL WRAP 6" BLACK
RAIL WRAP 6" MULTICAM®

TACTICAL SLINGS — 28-29

QS SABRE 2-POINT
QS SENTINEL 2-POINT
QS SENTRY 2-POINT

TACTICAL SLINGS CONT. — 30

QS HEAVY GUNNER 2-POINT
SLING TAIL
SINGLE POINT & ADAPTORS
3-POINT
CLIP HOOK

BULK PARTS / TOOLS — 31

BULK PARTS PACKS
SMALL PARTS PACKS
INSTALLATION TOOLS

REFERENCE CHARTS — 32-35

SWIVEL REFERENCE CHART
HOLSTER REFERENCE CHART

RAIL WRAP 6"

MULTI-FUNCTIONAL HEAT GUARD, M-LOK®, SLING STORAGE, CABLE MGMT

- Designed to Wrap Around a Handguard or Non AR Forearms
- Mitigate Heat Transfer (Not for Use on Suppressors)
- Integrated Elastic Webbing for Sling Storage (Shown on Page 27)
- M-Lok® Compatible For Bottom & Top Mounted Accessories
- Organize Electronic Accessory Cables/Wires Routing



GTAC331

GTAC330



SKUs / Variants

GTAC330 — Rail Wrap 6" - Black

GTAC331 — Rail Wrap 6" - Multicam®



TUBE MOUNT RAIL

BARREL BAND MOUNTED PICATINNY RAIL

- Designed to Mount a Picatinny Rail to a Barrel or Magazine Tube Using GrovTec Barrel Bands
- Add Picatinny Accessories to Firearms that aren't Normally Compatible
- Mil-Std 1913 Aluminum Rail & Steel Barrel Bands
- Mounts to GrovTec Two Piece Barrel Bands Only



SKUs / Variants

GTSW326 — Tube Mount Rail 2.6" 5 Slot
.420" - .470" Barrel Band Mounted Picatinny Rail

GTSW328 — Tube Mount Rail 2.6" 5 Slot
.675" - .725" Barrel Band Mounted Picatinny Rail

GTSW327 — Tube Mount Rail 2.6" 5 Slot
.630" - .675" Barrel Band Mounted Picatinny Rail

GTSW329 — Tube Mount Rail 2.6" 5 Slot
.800" - .850" Barrel Band Mounted Picatinny Rail



GTSW328

JAM NUT FOR MUZZLE DEVICES

- 2 Thread sizes: 1/2 - 28 (.223/5.56) and 5/8 - 24 (.308)
- Designed to be Used to Secure Muzzle Devices in Place
- Reusable and Easier to Install / Uninstall Muzzle Devices
- Fits Standard AR Armorer's Wrench (Not Included)



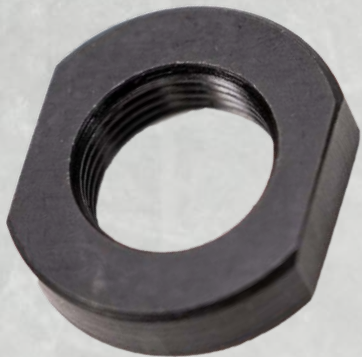
GTHM322



SKUs / Variants

GTHM322 — Jam Nut for Muzzle Devices, 1/2-28 Thread .223 / 5.56

GTHM323 — Jam Nut for Muzzle Devices, 5/8-24 Thread .308



QS TREK SLINGS

NOW W/ PUSH BUTTONS AND NEW CAMO TRUETIMBER® STRATA

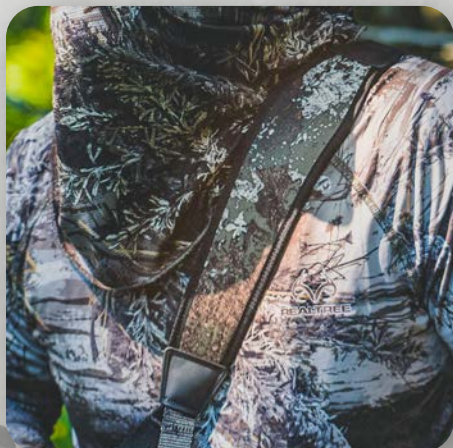
- Quick Slide for Easy Adjustment on the go
- Non-Slip Shoulder Pad
- Multi-Layered Pad Conforms to Shoulder
- Sewn in 1" Locking Swivels or Push Button Swivels
- Thumb Loop for Secure & Comfortable Carry



TRAIL PACK ERGONOMIC HOLSTER

NOW IN NEW CAMO TRUETIMBER® STRATA

- Three Point Harness for Ease of Carry and Wear
- Angled Carry for Smooth/Safe Draw
- Right Handed Offset Only
- Side Mounted Quick Release Buckle
- Ammo Loops / Magazine Pouch for Additional Ammo



HUNTING



SWIVEL SETS

STANDARD LOCKING SWIVELS

The classic swivel with our improved design for reliability. Features a free spinning sleeve the eliminates the chance for accidental detach. Our swivels are machined with close tolerances assures a snug fit with minimum noise.

GTSW01	1" Loops	Black Oxide Finish
GTSW02	1 - 1/4" Loops	Black Oxide Finish
GTSW03	1" Loops	Satin Nickel Finish
GTSW04	1 - 1/4" Loops	Satin Nickel Finish



MIL - FORCE™ LOCKING SWIVELS

Designed for high strength, tension tested to over 700 lbs. Cast Steel Body and Loop. Our strongest, most durable swivel. They feature the same free spinning sleeve that eliminates the chance for accidental release.

Patent No. 7,654,028

GTSW05	1 - 1/4" Loops	Zinc Phosphate Finish
--------	----------------	-----------------------



EURO LOCKING SWIVEL SET

Designed to fit smaller European style swivel studs and features smaller diameter pins. Includes: 2 Euro Locking Swivels.

GTSW199	1" Loop	Black-Oxide Finish
---------	---------	--------------------



REMINGTON 742 BDL RIFLES

Precise adaptor bolt swivel base and spacers simply replace factory fore end bolt on 742 BDL. Also includes 3/4" rear wood screw stud with spacer and two Locking Swivels.



GTSW15	1" Loops	Black-Oxide Finish
--------	----------	--------------------

REMINGTON 7400 & FOUR AUTOLOADERS

Set includes custom adaptor bolt swivel base with spacers for exact fit, 3/4" rear swivel stud with spacer and two Locking Swivels.

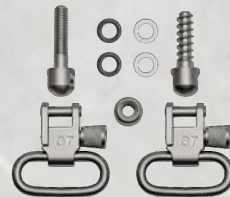


GTSW16	1" Loops	Black-Oxide Finish
--------	----------	--------------------

MACHINE SCREW FORE END

Includes: One 7/8" machine screw fore end swivel stud with nut, 3/4" wood screw stud rear, spacers and a pair of Locking Swivels.

GTSW07	1" Loops	Black-Oxide Finish
GTSW08	1 - 1/4" Loops	Black-Oxide Finish
GTSW09	1" Loops	Satin Nickel Plated



REMINGTON 742 ADL

Adaptor bolt swivel stud and spacers provide exact fit on 742 ADL and standard models. Does not fit BDL. Includes 3/4" rear wood screw swivel stud with spacer and two Locking Swivels.



GTSW17	1" Loops	Black-Oxide Finish
--------	----------	--------------------

REMINGTON 760 (1969-81) & 7600 (AFTER 1984)

Custom adaptor bolt swivel base and spacers replace factory bolt to provide an exact fit. The set includes adaptor bolt, 3/4" wood screw stud, spacers and two Locking Swivels.



GTSW18	1" Loops	Black-Oxide Finish
--------	----------	--------------------

WOOD SCREW FORE END

Set includes 1/2" wood screw fore end swivel stud, 3/4" wood screw rear, spacers and a pair of Locking swivels.

GTSW23	1" Loops	Black-Oxide Finish
GTSW307	1 - 1/4" Loops	Black-Oxide Finish
GTSW14	1" Loops	Satin Nickel Plated



REMINGTON 760 & 7600

Fits 760's, 7600, Six pumps, 740, 742, 7400, FOUR and .22 center-fires with .645"-.660" OD barrels. Includes band, 3/4" stud, spacers and Locking Swivels.



GTSW45	1" Loops	Black-Oxide Finish
--------	----------	--------------------

REMINGTON NYLON .22

Precise studs mount on Remington nylon stock with drill and tap. Includes two Locking Swivels.



GTSW21	1" Loops	Black-Oxide Finish
--------	----------	--------------------

SWIVEL SETS

T/C CONTENDER

Precise selection of machine screw swivel studs and spacers easily replace fore end and grip bolts on all factory and non-factory fore ends and grips. Set includes two Locking Swivels.



GTSW22 1" Loops Black-Oxide

WINCHESTER 70A

Fore end swivel stud and metal spacer replace factory installed nondetachable swivel. Includes 3/4" rear wood screw stud, spacers and two Locking Swivels.



GTSW25 1" Loops Black-Oxide

RUGER CARBINES, AUTO & SINGLE SHOT

Packaged with both fore end adaptor to fit 10/22, .44 mag and No. 3 carbines. 1/2" wood screw suitable for fore end stock mounting. Includes 3/4" rear wood screw swivel stud with spacers and two Locking Swivels.



GTSW27 1" Loops Black-Oxide Finish
GTSW28 1" Loops Satin Nickel Plated
GTSW313 1 - 3/4" Loops Black-Oxide Finish

SAVAGE 99

Custom fore end stud and spacer replaces stock screw exactly. No mods required. Set contains screw swivel stud replacement, spacers and two Locking Swivels.



GTSW32 1" Loops Black-Oxide

T/C RENEGADE, NEW ENGLANDER & OTHERS

Black-Oxide ramrod ferrule with swivel stud and locking swivels. Will not fit Green Mtn barrels. Includes 3/4" wood screw.



GTSW84 1" Loops Black-Ox-

ITHACA M37, M87 & DEERSLAYER SHOTGUNS

Custom fore end swivel base screws into barrel lug on Ithaca 37's, 87's Deerslayer, DSPS and M&P models with regular and extended magazines. Other 37's require 8-36 drill and tap. Includes 3/4" rear stud, spacers and two Locking Swivels.



GTSW26 1" Loops Black-Oxide Finish

BROWNING BLR

Included replacement spacer provides simplified mounting. Set includes 3/4" rear swivel stud with spacers and two Locking Swivels. Does not fit BLR lighting.



GTSW29 1" Loops Black-Oxide Finish

RUGER MINI 14

Precise fit for pre and post 1978 Mini 14's with provisions to fit the factory and non-factory stocks. Requires modifications to gas block on current models. Includes two Locking Swivels.



GTSW13 1" Loops Black-Oxide Finish

NON - DETACHABLE SWIVEL SETS

MACHINE SCREW FORE END

Set features a 7/8" machine screw non-detachable fore end swivel and a 3/4" wood screw also with a nondetachable swivel rear.



GTSW76 1" Loops Black-Oxide Finish
GTSW77 1 - 3/4" Loops Black-Oxide Finish

WOOD SCREW FORE END

Set features a 1/2" wood screw nondetachable fore end swivel and a 3/4" wood screw also with a nondetachable swivel rear.



GTSW78 1" Loops Black-Oxide Finish

PUMP & AUTO SHOTGUNS

Fore end mounts to the magazine cap of most pump and auto-loading shotguns. A tubular mounting tool is included. 7/8" rear wood screw swivel provides solid hold in buttstock.



GTSW20 1" Loops Black-Oxide Finish

CENTER-FIRE LEVER ACTION

Winchester 94, Marlin 36, Marlin 336 and others, features a one-piece band for tube magazines .640 .660" diameter. Includes 3/4" nondetachable wood screw rear swivel.



GTSW24 1" Loops Black-Oxide



SHOTGUN SWIVEL SETS

REMINGTON 870, 870 YOUTH

Simply replace the factory mag cap. Also includes 3/4" rear wood screw stud with spacer and two Locking Swivels. (Detents on cap lip)

GTSW35 12ga. 1" Loops Black-Oxide Finish
GTSW87 20ga. 1" Loops Black-Oxide Finish



REMINGTON 870 EXPRESS

Simply replace the factory mag cap. Also includes 3/4" rear wood screw stud with spacer and two Locking Swivels. (Ratchet on inside of cap)

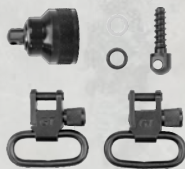
GTSW34 12ga. 1" Loops Black-Oxide Finish
GTSW86 20ga. 1" Loops Black-Oxide Finish



MOSSBERG 590 / 835

Simply replace the factory mag cap. Also includes 3/4" rear wood screw stud with spacer and two Locking Swivels.

GTSW38 12ga. 1" Loops Black-Oxide Finish



MOSSBERG 500 MAG BOLT & MAVERICK 88 12GA.

Simply replace the factory mag bolt. Also includes 3/4" rear wood screw stud with spacer and two Locking Swivels.

GTSW37 12ga. 1" Loops Black-Oxide Finish
GTSW90 20ga. 1" Loops Black-Oxide Finish



MOSSBERG 500 STUD

Machine screw swivel stud fits on the existing Mossberg 500 mag caps. Also includes 3/4" rear wood screw stud with spacer and two Locking Swivels.

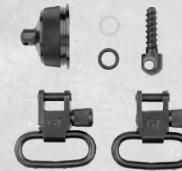
GTSW31 1" Loops Black-Oxide Finish



REMINGTON 11-87

Simply replace the factory mag cap. Also includes 3/4" rear wood screw stud with spacer and two Locking Swivels.

GTSW36 12ga. 1" Loops Black-Oxide Finish
GTSW89 20ga. 1" Loops Black-Oxide Finish



SLOTTED SLING ASSEMBLY

Custom nut and swivel stud assembly attaches to slotted mounts on specialty shotguns. Also includes 3/4" rear wood screw stud with spacer and two Locking Swivels.

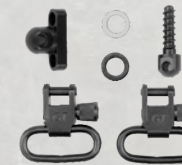
GTSW12 1" Loops Black-Oxide Finish



SIDE-BY-SIDE DOUBLE BARREL

Drill and tap for mounting of custom swivel stud base between barrels. Includes two Locking Swivels and 3/4" wood screw swivel stud.

GTSW30 1" Loops Black-Oxide Finish



WINCHESTER 1200 / 1300

Simply replace the factory mag cap. Also includes 3/4" rear wood screw stud with spacer and two Locking Swivels.

GTSW39 12ga. 1" Loops Black-Oxide Finish



ITHACA MAG 10

Flush mount rear swivel stud base and mag cap adaptor. Primary set for Ithaca Mag 10 and 51A deerlayers (83' and later). Fits most pump and autos. Includes two Locking Swivels.

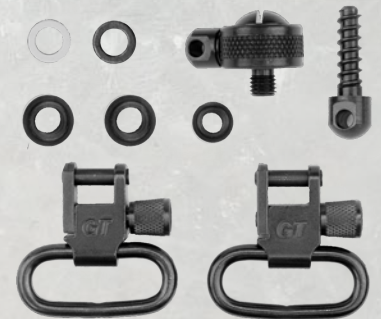
GTSW11 1" Loops Black-Oxide Finish



MOST PUMPS AND AUTOS W/REPLACEMENT MAG CAP

Simple modification to mag cap allows mounting on most pump and auto shotguns. Not for use on Ithaca 37, Savage 30, Sears 21, Stevens pumps or Winchester 1400 or any firearm with gas operated recoil. Also includes 3/4" rear wood screw stud with spacer and two Locking Swivels.

GTSW33 1" Loops Black-Oxide Finish



MOST PUMPS AND AUTOS

Fits most mag caps and Beretta 390 specifically. Won't fit Browning 2000, Ithaca 37, Savage 30, Sears 21, Stevens pumps or Win 1400. Includes 3/4" rear stud, spacers and two Locking Swivels.

GTSW19 1" Loops Black-Oxide Finish



SHOTGUN MAG CAPS INTEGRATED BASE & 1" PUSH BUTTON SWIVELS

Standard mag cap replaces the factory cap and allows the use of any GrovTec Push Button Swivel or even the Multi Adaptor for speed and versatility in the field. Includes one 12 gauge mag cap and one standard 1" loop push button swivel.

BENELLI SUPER BLACK EAGLE I & II, M1 & M2, 12GA.

GTSW291 1" Loops Black-Oxide Finish



BERETTA AL391, 12GA.

GTSW292 1" Loops Black-Oxide Finish



MOSSBERG 590/835, 12GA.

GTSW298 1" Loops Black-Oxide Finish



MOSSBERG 500, 12GA. & MAVERICK 88 12GA.

GTSW308 1" Loops Black-Oxide Finish



REMINGTON 870 EXPRESS 12GA.

GTSW296 1" Loops Black-Oxide Finish



REMINGTON 870 12GA.

GTSW297 1" Loops Black-Oxide Finish



WINCHESTER SUPER X2 & SUPER X3, 12GA.

GTSW293 1" Loops Black-Oxide Finish



WINCHESTER 1200/1300, 12GA.

GTSW294 1" Loops Black-Oxide Finish



SHOTGUN SIDE MOUNT SINGLE POINT ADAPTORS

Providing single point sling options for Remington and Mossberg shotguns, it replaces the receiver pin. No modification is required. Allen wrench, retainer screw and thread locker included.

SLING SWIVEL STUD

GTHM273
Remington 870, 870 EXP, 1187 & 1100 12GA.

GTHM274
Mossberg 500, 835, 590, 930, & 935 12GA.



PUSH BUTTON BASE

GTHM270
Remington 870, 870 EXP, 1187 & 1100 12GA.

GTHM271
Mossberg 500, 835, 590, 930, & 935 12GA.



BARREL BAND SWIVEL SETS

No swivel stud on your shotgun forearm and want to mount a sling on your lever action rifle's magazine tube? Our Barrel Band Swivel Sets are your answer. Our one and two piece barrel band sets fit almost any firearm from a .22 rimfire magazine tube of .420" diameter up to shotgun barrel with a 1.025" diameter.

TWO PIECE BARREL BANDS

TUBE DIAMETER	SET NUMBER	SWIVEL LOOP SIZE
.420" - .470" 2pc Band Set	GTSW40	1" Loops
.540" - .590" 2pc Band Set	GTSW300	1" Loops
.585" - .635" 2pc Band Set	GTSW301	1" Loops
.630" - .675" 2pc Band Set	GTSW43	1" Loops
.630" - .675" 2pc Band Set	GTSW44	1 - ¼" Loops
.675" - .725" 2pc Band Set	GTSW302	1" Loops
.700" - .750" 2pc Band Set	GTSW303	1" Loops
.750" - .800" 2pc Band Set	GTSW304	1" Loops
.775" - .825" 2pc Band Set	GTSW305	1" Loops
.800" - .850" 2pc Band Set	GTSW46	1" Loops
.850" - .900" 2pc Band Set	GTSW306	1" Loops
.975" - 1.025" 2pc Band Set	GTSW202	1" Loops



GTSW302 - TWO PIECE BARREL BANDS

ONE PIECE BARREL BANDS

TUBE DIAMETER	SET NUMBER	SWIVEL LOOP SIZE
.430" - .445" Full Band (Relieved)	GTSW42	1" Loops
.645" - .660" Full Band (Relieved)	GTSW41	1" Loops
.645" - .660" Full Band	GTSW45	1" Loops

(GTSW41 & GTSW42 have a Relief Cut to fit under magazine tube upon install)

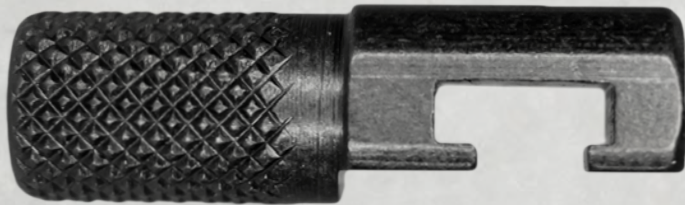


GTSW42 - ONE PIECE BARREL BANDS

HAMMER EXTENSIONS

13 different hammer extensions to fit your firearm with an exposed hammer. Allows the user to easily pull the hammer after you mount a scope.

GTHM71	Browning BL22, Astra 357
GTHM285	Browning BLR 1992 1995 Not for use on folding hammers.
GTHM73	Browning BLR 1981 - 1991. Does not fit 92' & later. Not for folding hammers.
GTHM277	Henry Big Boy, Pre-2010 models & Centerfire Rifles
GTHM283	Henry Big Boy Centerfire Rifles, Post 2010 models, Henry Single Shot
GTHM284	Henry 22 Pump and Lever Action rim-fire rifles, Rossi 92
GTHM70	Marlin Lever Actions 1957 - 1982
GTHM308	Marlin 36 (1936 - 1947) & Marlin 336 (1948 - 1956)
GTHM74	Marlin Post 1983, 39A, 39M, 1894, 1894C, 1895S, 336C, 336T, 375, 444S, Glenfield 30A
GTHM72	Ruger Blackhawk, H&R Topper, New England Firearms Handi Rifle
GTHM79	T/C Contender, S&W Model 29, Ruger Super Blackhawk
GTHM68	Winchester 94s & Big Bore 94s & Angle eject (except 94/22), Ithaca Xcaliber
GTHM69	Winchester 94/22



QS TREK SLINGS w/ SWIVELS

The Trek Sling is a ground up re-design of our classic premium padded sling. It conforms to your shoulder distributing the load evenly and comfortably. The tailless Quick Slide allows for easy adjustments while you're on the go carrying your firearm. Includes sewn in Locking Swivels.

GTSL123 Black
w/ Locking Swivels



GTSL125 Mossy Oak®
New Break Up
w/ Locking Swivels



GTSL128 Mossy Oak®
Break Up Country
w/ Locking Swivels



GTSL129 Mossy Oak®
Shadow Grass Blades
w/ Locking Swivels



GTSL124 RealTree® Xtra® Green
w/ Locking Swivels



GTSL330 Realtree Edge™
w/ Locking Swivels



NEW
GTSL332 TrueTimber® Strata
w/ Locking Swivels



NEW
GTSL334 TrueTimber® Strata
w/ Push Button Swivels



NEW
GTSL333 Black
w/ Push Button Swivels



QS FLEX SLINGS w/ SWIVELS

Our Flex Sling is constructed from high quality elastic polymer and multiple layers of neoprene for extra comfort and durability. Features non-slip backing and sewn in swivels.

GTSL121 Black w/ Locking Swivels



GTSL122 RealTree® Xtra® w/ Locking Swivels



QS MOLLE SLINGS w/ SWIVELS

Integrated thumb loop relieves tension on your hand and forearm as well as stabilizing the firearm. Non-skid durable long-wearing material holds just enough to keep the firearm in place without inhibiting your ability to quickly shoulder your firearm.

GTSL119 Molle - Black w/ Locking Swivels

GTSL120 Molle - Black w/ Push Button Swivels



AMMO CARTRIDGE SLINGS w/ SWIVELS

Premium Padded Ammo Cartridge Slings Tapered design emphasizes width at the load-carrying position to spread weight over a greater area. Integrated thumb loop relieves tension on your hand and forearm as well as stabilizing the firearm. Non-skid durable long-wearing material holds just enough to keep the firearm in place without inhibiting your ability to quickly shoulder your firearm. Individual shell loops keep your extra ammo readily handy.

GTSL30 Black Rifle Ammo

GTSL115 RealTree® Xtra® Green Rifle Ammo

GTSL31 Black Shotgun Ammo

GTSL116 RealTree® Xtra® Green Shotgun Ammo



PREMIUM PADDED SLINGS

Made from premium materials to perform in any conditions. Features include; Patented nylon stretch web, shoulder pad, non-slip shoulder grip, thumb loops & some slings include sewn in Locking Swivels.

GTSL01	Black (No Swivels)	
GTSL20	Black w/ Locking Swivels	
GTSL03	Black Shotgun (Leather Loops)	
GTSL60	Black Neoprene (No Swivels)	
GTSL69	RealTree® MAX 5® Neoprene (No Swivels)	
GTSL66	RealTree® Xtra® Green w/ Locking Swivels	
GTSL26	TrueTimber® Pink w/ Locking Swivels	
GTSL27	TrueTimber® Snow w/ Locking Swivels	
GTSL32	TrueTimber® Blaze Orange w/ Locking Swivels	
GTSL35	MultiCam® w/ Locking Swivels	

UTILITY SLINGS

Utility Slings are exactly that; utilitarian. They're economical, easy to fit any firearm and easy to adjust.

GTSL40	48" x 1"	Black	
GTSL41	48" x 1 - 1/4"	Black (Wide)	
GTSL42	72" x 1"	Black (Long)	
GTSL45	72" x 1 - 1/4"	Black Universal	

BALANCEPOINT SLINGS w/SWIVELS

BalancePoint Slings allow you to work hands free when you are climbing up rough terrain or riding your ATV. The backpack style straps evenly distributes the rifle weight, and prevents slipping off your shoulder letting you carry your rifle safely and securely.

GTSL24	Black Padded BalancePoint Sling w/ Locking Swivels
GTSL59	Realtree® Xtra® Green BalancePoint Sling w/ Locking Swivels
GTSL118	Molle BalancePoint Sling w/ Push Button Swivels



MOUNTAINEER SLINGS W/SWIVELS

1.25" wide slings with sewn in swivels and a nonslip back material. Simple and effective for any firearm.

GTSL50	48" x 1 - 1/4"	Black
GTSL51	48" x 1 - 1/4"	Realtree® Advantage Timber
GTSL68	48" x 1 - 1/4"	Black W/ Push Button Swivels



TRAIL PACK ERGONOMIC HOLSTERS

A streamlined design for comfort and ease of carry. The new Ergonomic Holster features an offset carry position for smooth and efficient draw of the handgun. It also uses a three point shoulder sling. No matter how rigorous the activity, your handgun is securely held and out of the way, yet remains immediately accessible. Adjusts to fit either beneath or on the outside of jackets. Optional belt strap. Includes belt loops for versatility. Includes magazine pouch. Right handed.

GTHL15202R	TrueTimber® Strata	3 - 4" Barrel Medium and Large Double Action Revolvers
GTHL15205R	TrueTimber® Strata	4½ - 5" Barrel Large Semi Automatics
GTHL15102R	Black	3 - 4" Barrel Medium and Large Double Action Revolvers
GTHL15105R	Black	4½ - 5" Barrel Large Semi Automatics



GTHL15202R
NEW

GTHL15205R
NEW



GTHL15102R

GTHL15105R

TRAIL PACK HOLSTERS

Easily carry your pistol with the Trail Pack holster. Padded Air-mesh shoulder harness to eliminate unwanted movement. Adjusts to fit either beneath or on the outside of jackets. Optional belt strap. Includes cartridge loops to hold extra ammo. Right handed.

GTHL14902R	Black	3 - 4" Barrel Med - Large Double Action Revolvers
GTHL14905R	Black	4½ - 5" Barrel Large Semi Automatics



GTHL14902R



GTHL14905R



INSIDE-THE-PANT HOLSTERS

Multilayer material with an internal moisture barrier to prevent perspiration contact with firearm. Nylon lining eases the draw of firearm and the belt clip slips over pants/belt to secure holster for safe draw of gun.

SIZE	RIGHT HAND	DESCRIPTION
0	GTHL14100R	2-3" Barrel Small/Medium Double Action Revolvers (Except 2 -1/2" 5 Shot)
1	GTHL14101R	3-4" Barrel Medium Semi Autos
2	GTHL14102R	4" Barrel Medium and Intermediate Double Action Revolvers
5	GTHL14105R	4-5" Barrel for Large Semi Autos
10	GTHL14110R	Small Semi Automatics .22 -.25 Caliber
12	GTHL14112R	Glock 26,27,33, Sub Compact 9mm and .40 Caliber
15	GTHL14115R	3 - 4" Barrel for Large Semi Auto
16	GTHL14116R	3 - 3-1/2" Barrel for Medium and Large Semi Auto
36	GTHL14136R	2" Barrel Small Frame 5 Shot Revolvers w/Hammer Spur
60	GTHL14160R	Laserguard Ruger LCP, KelTec P3AT
61	GTHL14161R	Laserguard Taurus TCP, Kahr Arms P380



GTHL14101R - Inside The Pant Holster

MULTI-FIT HOLSTERS

Multi-fit Holster has a torsion grip retention keeping the pistol firmly in place. Slim profile belt slide holster for easy concealment. Multilayer material conforms to body and eliminates printing. Raised inner section for easy re-holstering and protects clothing and keeps the firearm free of skin oils.

RIGHT HAND	COLOR	SIZE
GTHL15098BLKR	BLACK	S/M (98) Fits Most Small - Medium Frame Semi Auto Pistols
GTHL15099BLKR	BLACK	M/L (99) Fits Most Medium - Large Frame Semi Auto Pistols



GTHL15099BLKR - Multi-Fit Holster

AMMO BUTTSTOCK HOLDERS

One of the easiest, fastest ways to get to your extra ammo when you need it is to use our Ammo Buttstock Holders. Easy to install and places your ammo right where you want it when you need it in a hurry.



GTAC76
Rifle TrueTimber® - 9 Loops



GTAC77
Shotgun TrueTimber® - 5 Loops



GTAC74
Rifle TrueTimber® Pink - 9 Loops



GTAC75
Shotgun TrueTimber® Pink - 5 Loops



GTAC81
Rifle Black - 9 Loops



GTAC82
Shotgun Black - 5 Loops



GTAC83
Rifle Black w/ Cover - 6 Loops



GTAC84
Shotgun Black w/ Cover - 5 Loops

BELT SLIDE AMMO HOLDERS

One of the easiest ways to get to your extra ammo. Easy to install and places your ammo right where you want it when you need it in a hurry. Fits up to 2.25" wide belts.



GTAC85
Handgun - 6 Loops



GTAC86
Rifle - 10 Loops



GTAC87
Shotgun - 6 Loops



GTAC88
Handgun - 12 Loops



GTAC89
Rifle - 12 Loops



GTAC90
Magnum - 6 Loops

PADDED COMB RISER

Raises comb for better sight picture providing better accuracy. Extra insert included. Secure hook & loop strap holds cheek rise in place. Can also be inserted under our Buttstock Cartridge Shell Holder.

GTAC78

Neoprene

Black



TACTICAL



PUSH BUTTON SWIVELS

SINGLE BLACK NITRIDE HEAVY DUTY PUSH BUTTON SWIVEL

Top of the line premium finish heavy duty push buttons. Features an extra durable matte Black Nitrite Finish.

GTSW314 1 - 1/4" Loops Black Nitride Finish



SINGLE HEAVY DUTY PUSH BUTTON SWIVEL

Top of the line heavy duty push button. Pull tested to hold over 450lbs of tension. Features our non-glare manganese phosphate finish.

GTSW106 1 - 1/4" Loop Manganese Phosphate Finish



SINGLE 1 - 1/2" HEAVY DUTY PUSH BUTTON SWIVEL

Top of the line heavy duty push button. Pull tested to hold over 450lbs of tension. Features our non-glare manganese phosphate finish.

GTSW107 1 - 1/2" Loop Manganese Phosphate Finish



HEAVY DUTY PUSH BUTTON SWIVELS

Top of the line heavy duty push buttons. Pull tested to hold over 450lbs of tension. Features our non-glare manganese phosphate finish.

GTSW288 1 - 1/4" Loops Manganese Phosphate Finish



DESERT SAND HEAVY DUTY PUSH BUTTON SWIVELS

The same rock solid push button design, but improved upon by upgrading to all stainless steel construction. Featuring a Cerakote™ finish to eliminate reflection.

GTSW252 1 - 1/4" Loops Cerakote™ Desert Sand



FLAT DARK EARTH HEAVY DUTY PUSH BUTTON SWIVELS

The same rock solid push button design, but improved upon by upgrading to all stainless steel construction. Featuring a Cerakote™ finish to eliminate reflection.

GTSW253 1 - 1/4" Loops Cerakote™ Flat Dark Earth



RECESSED PLUNGER HEAVY DUTY PUSH BUTTON SWIVELS

This set is designed with a recessed plunger flush to the body of the swivel eliminating the chance for errant swivel release.

GTSW287 1 - 1/4" Loops Manganese Phosphate Finish



D-LOOP RECESSED PLUNGER HEAVY DUTY PUSH BUTTON SWIVELS

This set is designed with a D-loop for use with MASH or HK style CLASH hooks. Features our non-glare manganese phosphate finish.

GTSW264 D-Loops Manganese Phosphate Finish



PUSH BUTTON STANDARD SWIVELS W/BASES

Our standard push button swivels provide a flush mounting system without protruding swivel studs. Fore end and buttstock are countersunk into stock and glued into place. Easily installed and are fast operating for users who remove

GTSW06 1" Loops Black-Oxide Finish



TWIST LOCK PUSH BUTTON SWIVELS W/BASES

Patented design named as a push button for it's general appearance, but it operates with a lift twist motion for superior security. Body locks around the loop to eliminate any unwanted

GTSW92 1" Loops Black-Oxide Finish

Patent No. 7,654,027



HEAVY DUTY PUSH BUTTON SWIVELS W/BASES

Pull tested to hold over 450lbs of tension this swivel pair provides rock solid performance under the most demanding conditions. Includes a pair of threaded bases for easy install.

GTSW295 1 - 1/4" Loops Black-Oxide Finish



ANGLE LOOP RECESSED PLUNGER HEAVY DUTY PUSH BUTTON SWIVELS

This set is designed with a tactical angle loop for use with MASH or HK style CLASH hooks. Also includes a recessed plunger eliminating the chance for errant swivel release.

GTSW263 Angle Loops Manganese Phosphate Finish



HEAVY DUTY PUSH BUTTON BASES

Available in full and limited rotation options. With stainless steel construction these push button bases deliver exceptional strength and security, allowing multiple swivel positions to be added to any synthetic or wood stock firearm.

GTHM289 Full Rotation Black-Oxide Finish
GTHM279 Limited Rotation Black-Oxide Finish
GTHM290 Non-Rotating Black-Oxide Finish



TRI-BASE BUFFER TUBE SLING MOUNT

Mounts on a mil-spec buffer tube to allow for three sling mounting positions. Installs with no dis-assembly required. All three bases are full rotation. Allen key tool and mounting screws included.

GTSW312 Full Rotation Tri-Base Buffer Tube Sling Mount



AR BUTTSTOCK PUSH BUTTON BASE

Replacement of stock AR15, M16 and some carbine swivel loop without modifications to rifle. This limited rotation base prevents tactical slings from twisting. (DOES NOT FIT Ruger AR 556)

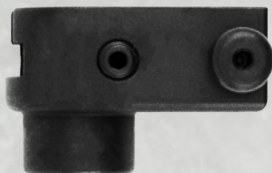
GTHM255 Limited Rotation Black-Oxide Finish



PUSH BUTTON BASE BAYONET ADAPTOR

Mounting to bayonet lug of AR platforms, the bayonet adaptor plate delivers easy, convenient positioning of a push button base. Made from high quality aluminum.

GTSW276 Full Rotation Type III Black Anodize Finish



NON-THREADED PUSH BUTTON BASES

With all steel construction these bases deliver exceptional strength and security, allowing multiple swivel positions to be added to any synthetic or wood stock firearm.

GTHM234 Full Rotation Black-Oxide Finish



PUSH BUTTON BASE FOR HOLLOW STOCK

Install a push button base into thin walled stocks where the wall of the stock is not thick enough to support a threaded base alone. It's held in place on the inside of the stock by a mating panel nut.

GTHM198 Full-Rotation Black Oxide Finish



PUSH BUTTON BASE TO STUD ADAPTOR - SWIVEL STYLE

This unique design allows you to have the best of both worlds. Attach to any rifle with studs and then use your favorite GrovTec push button sling combo to have quick release push button and the reliability of locking swivels without the need of any modification to your rifle. All steel construction.

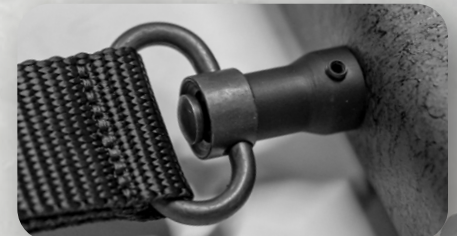
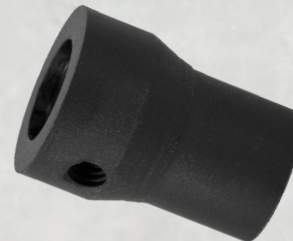
GTSW235 Full Rotation Black-Oxide Finish



PUSH BUTTON BASE TO STUD ADAPTOR - FIXED STYLE

Mounts directly onto a standard swivel stud. Easily add a push button base to any rifle with studs. This adaptor is fixed in place locking on to the swivel stud.

GTSW108 Full Rotation Type III Black Anodize Finish



SNAP HOOK & STUD ADAPTORS

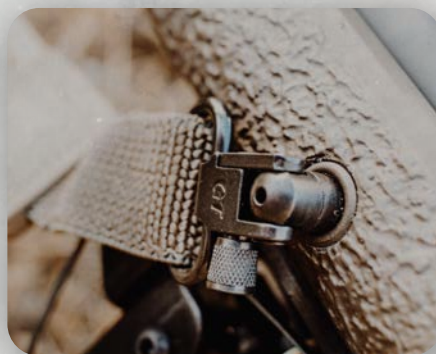
SWIVEL STUD & SNAP HOOK MULTI - ADAPTORS

Add function to push button swivel bases with the ingenious Multi-Adaptor. Use supplied allen wrench to depress plunger and slide into base. Standard stud is ready to accept all swivel types and accessories that require standard studs. Also comes in snap hook variant. Fits Full Rotation push button bases. Includes two Multi-Adaptors and two stainless steel bases.

GTSW281 Snap Hook
GTSW299 Swivel Stud



Manganese Phosphate Finish
Black-Oxide Finish



SNAP HOOK ADAPTORS

Easily convert any sling with push button swivels or locking swivels with this snap hook style attachment. Now featuring a new sleeker push button base design.

GTSW269 Push Button Base Type III Black Anodize GTSW268 Swivel Stud Adaptor Type III Black Anodize



M-LOK®, KEYMOD™ & STOCK AR

FLANGED PUSH BUTTON BASE MOUNT

Mounts a push button to M-LOK® or Keymod™ handguards. Includes hardware for install.

GTSW109 Non Rotation, Keymod™
GTSW110 Full Rotation, Keymod™

GTSW193 Non Rotation, M-LOK®
GTSW194 Full Rotation, M-LOK®



FLANGED STUD MOUNT

Mounts a standard swivel stud to a Keymod™ or M-LOK® handguard. Includes hardware for install.

GTSW111 Keymod™

GTSW112 M-LOK®

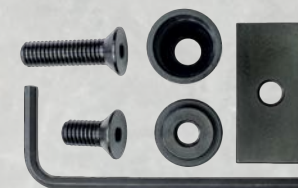


KEYMOD™ HANDGUARD ADAPTORS

Attaches to Keymod™ handguard. Available with a swivel stud or a push button base. Black-Oxide Finish.

GTSW232 Swivel Stud

GTSW233 Push Button Base



STOCK AR HANDGUARD ADAPTORS

This base allows use of a locking swivel or a push button swivel on stock AR handguards.

GTSW266 Swivel Stud Black-Oxide Finish
GTSW267 Push Button Base Black-Oxide Finish



PICATINNY RAIL MOUNTS

SIDE RIDER MOUNTS

A low profile sling mount with a push button base (QD). Designed to be mounted to the top rail of a handguard without interfering with your sight-line. Aluminum construction. Comes in Type-III Hard Black Anodized Finish.

GTSW322 Push Button Base - Full Rotation



GTSW323 Snap Hook Loop - Full Rotation



PICATINNY MOUNTED ADAPTORS

Available in three adaptor options. Full rotation push button base, limited rotation push button base, and snap hook stud. The limited rotation push button base has a 30 degree arc of rotation which allows your sling to move without twisting. The snap hook adaptor fits HK style snap hooks and MASH hooks.

GTSW278 Full Rotation Type III Black Anodized
GTSW258 Limited Rotation Type III Black Anodized



GTSW254 Snap Hook Type III Black Anodized



BIPOD MOUNTS

BIPOD STUD MOUNT KEYMOD™

Mounts a bipod using standard swivel stud to Keymod™ handguard.

GTSW113 Type III Black Anodized



BIPOD STUD MOUNT M-LOK™

Mounts a bipod using standard swivel stud to M-LOK™ handguard.

GTSW240 Type III Black Anodized



ANSCHUTZ T-NUT ADAPTOR SETS FOR BIPOD MOUNTS

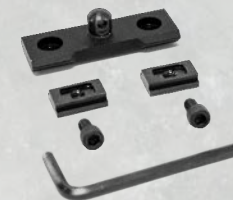
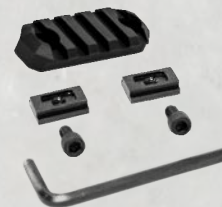
Designed To Convert A Pre-Installed Anschütz Rail To A Bipod Mount or a Picatinny Rail. Uses M-LOK® Hardware And A Custom T-Nut Steel & Aluminum Parts. Type III Black Hard Anodized Finished & Black Oxide Finish.



GTSW325 Anschütz T-Nut Rail Adaptor Set



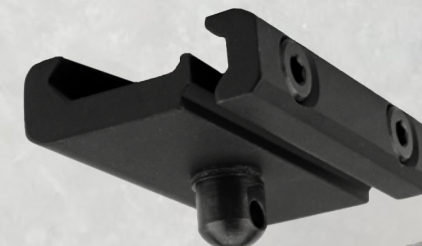
GTSW324 Anschütz T-Nut Stud Adaptor Set



BIPOD STUD RAIL MOUNT

Mounts a bipod using standard swivel stud to Picatinny rail. Allen Key tool and screws are included. Aluminum and steel construction.

GTSW265 Type III Black Anodized



HAND STOP

G-STOP - REVERSIBLE HAND STOP / BARRICADE STOP

Precision CNC machined from lightweight, solid aluminum with Type-III Black Anodized Finish. MIL-STD 1913. Includes hardware and allen key for install. M-Lok® mounting system. Features a low profile design with ergonomic contouring. Small mounting footprint with a flat face for bracing on barricades.

GTHM321

Type-III Black Anodized, M-LOK®



PICATINNY RAIL ACCESSORIES

TUBE MOUNT RAIL - BARREL BAND MOUNTED PICATINNY RAIL **NEW**

A picatinny rail that mounts to a barrel or magazine tube using two-piece GrovTec barrel bands only. This is designed to be used for mounting accessories to firearms that typically cannot accept picatinny accessories in their stock configuration such as lever actions, shotguns, single shot firearms and more.

GTSW326

Tube Mount Rail 2.6", 5 Slot - .420" - .470" Barrel Band Mounted Picatinny Rail

GTSW327

Tube Mount Rail 2.6", 5 Slot - .630" - .675" Barrel Band Mounted Picatinny Rail

GTSW328

Tube Mount Rail 2.6", 5 Slot - .675" - .725" Barrel Band Mounted Picatinny Rail

GTSW329

Tube Mount Rail 2.6", 5 Slot - .800" - .850" Barrel Band Mounted Picatinny Rail



MTMx3 EXTENDED MAGAZINE TUBE MOUNT

Provides three different ways to mount your accessories; a picatinny rail, a push button base and a swivel stud. The steel magazine tube mount gives extra security to the 12 Ga. magazine tube.

GTSW256

Mossberg 500, 835, 590, 930, 935, Remington 1100 12 Ga.

GTSW257

Remington 870 12 Ga.



PICATINNY RAILS

Precision CNC machined from lightweight, solid aluminum with Type III Black Hard Anodized finish. MIL-STD 1913 Picatinny rail pattern allows mounting a variety of lasers, sights and scopes or other accessories.

M-LOK™ PICATINNY RAILS

GTSW236 - RAIL 2.2", 5 SLOT, M-LOK™



GTSW237 - RAIL 3", 7 SLOT, M-LOK™



GTSW241 - RAIL W/ BASE, 3.1", 5 SLOT, M-LOK™



GTSW238 - RAIL 3.8", 9 SLOT, M-LOK™



GTSW239 - RAIL 6", 15 SLOT, M-LOK™



KEYMOD™ PICATINNY RAILS

GTSW227 - RAIL 2.2", 5 SLOT, KEYMOD™



GTSW228 - RAIL 3", 7 SLOT, KEYMOD™



GTSW231 - RAIL W/ BASE, 3.1", 5 SLOT, KEYMOD™



GTSW229 - RAIL 3.8", 9 SLOT, KEYMOD™



GTSW230 - RAIL 6", 15 SLOT, KEYMOD™



STOCK AR / FLAT BOTTOM RAILS

GTSW189 - RAIL 2.2", 5 SLOT, STOCK AR



GTSW259 - RAIL 3", 7 SLOT, STOCK AR



GTSW192 - RAIL W/ BASES, 3.1", 5 SLOT, STOCK AR



GTSW190 - RAIL 3.8", 9 SLOT, STOCK AR



GTSW191 - RAIL 6", 15 SLOT, STOCK AR



PAR 45° - PICATINNY ANGLED RAIL 45 DEGREES

An offset Picatinny rail designed for mounting secondary sights such as red dots or iron sights. The rail has a low profile mounting system that allows it to fit underneath or just in front of most optics. The rail has a 45 degree offset.

GTSW321 Type-III Black Anodized



MUZZLE DEVICES

The family of muzzle devices are all steel construction. We've designed these products for high quality performance, reliability, and lasting durability.

G-COMP .223 / 5.56

Muzzle compensator designed to redirect propellant gases and counter recoil / muzzle rise. All Steel Construction.

GTHM315 Nitride Finish



G-COMP .308

Muzzle compensator designed to redirect propellant gases and counter recoil / muzzle rise. All Steel Construction.

GTHM316 Nitride Finish



G-NITE .223 / 5.56

Flash Hider designed to cool down release gases and suppress the flash signature.

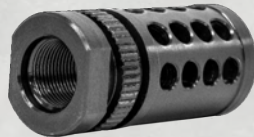
GTHM317 Nitride Finish



G-NITE .308

Flash Hider designed to cool down release gases and suppress the flash signature.

GTHM318 Nitride Finish



MUZZLE THREAD PROTECTORS

One Piece steel construction with a Black-Oxide Finish.

STANDARD THREADS

GTHM242	1/2-20 x .625"	Fit to Barrel (Some .22's)
GTHM243	1/2-28 x .920"	10/22 Bull Barrel
GTHM244	1/2-28 x .641"	After market 9mm Barrels
GTHM245	1/2-28 x .705"	Most AR Barrels
GTHM246	1/2-28 x .625"	Pencil Barrels
GTHM247	3/4-24 x .750"	AR10, .300AAC Black-Out

METRIC THREADS

GTHM248	14 x 1	Measure to Fit
GTHM250	15 x 1	Measure to Fit



THREAD CONVERTER

Allows you to use your suppressor for larger 5/8"- 24 thread-ed barrels on smaller diameter barrels that have 1/2"- 28 thread. One piece steel construction.

GTHM197 5/8" - 24 to 1/2" - 28



JAM NUT FOR MUZZLE DEVICES **NEW** 1/2 - 28 (.223/5.56)

Reusable Jam Nut for easy installation of muzzle devices.

GTHM322 Nitride Finish



JAM NUT FOR MUZZLE DEVICES **NEW** 5/8 - 24 (.308)

Reusable Jam Nut for easy installation of muzzle devices.

GTHM323 Nitride Finish



CRUSH WASHERS .223 / 5.56 - 5 PACK

Washer designed to be installed to secure muzzle devices. Steel construction.

GTHM319 Nitride Finish



CRUSH WASHERS .308 - 5 PACK

Washer designed to be installed to secure muzzle devices. Steel construction.

GTHM320 Nitride Finish



RAIL WRAPS

RAIL WRAP 6" **NEW**

MULTI-FUNCTIONAL HEAT GUARD, M-LOK®, SLING STORAGE, CABLE MGMT.

Designed to wrap around a handguard or non AR forearms. Mitigates heat transfer (not for use on suppressors). Includes integrated elastic webbing for sling storage. M-lok® accessories are compatible for bottom & top mounting. Easily allows you to organize electronic accessory cables/wires routing.



GTAC331

GTAC330

GTAC330 — Rail Wrap 6" - Black



GTAC331 - RAIL WRAP 6" W/ SABRE SLING STORED IN ELASTIC BAND

GTAC331 — Rail Wrap 6" - Multicam®



QS 2-POINT SABRE SLINGS w/ PUSH BUTTON SWIVELS

The QS 2-Point Sabre Sling features a 1" wide webbing. The sleek design features our Quick Slide functionality. Simply pull forward to adjust out, or pull backwards to adjust in. Includes an emergency release buckle and is designed for a 2-Point carry style. Adjustable to size and includes heavy duty push button swivels.



GTSL134

QS 2-POINT SABRE SLING - BLACK



GTSL136

QS 2-POINT SABRE SLING - MULTICAM®



GTSL135

QS 2-POINT SABRE SLING - COYOTE BROWN



GTSL137

QS 2-POINT SABRE SLING - MULTICAM® BLACK



QS 2-POINT SENTINEL SLINGS w/ PUSH BUTTON SWIVELS

The QS 2-Point Sentinel Sling features a 1" wide webbing with a 2" wide pad for shoulder support. The sleek design features our Quick Slide functionality. Simply pull forward to adjust out, or pull backwards to adjust in. Includes an emergency release buckle and is designed for a 2-Point carry style. Adjustable to size and includes heavy duty push button swivels.

GTSL326 QS 2-POINT SENTINEL SLING - MULTICAM® BLACK



GTSL327 QS 2-POINT SENTINEL SLING - MULTICAM®



GTSL127 QS 2-POINT SENTINEL SLING - BLACK



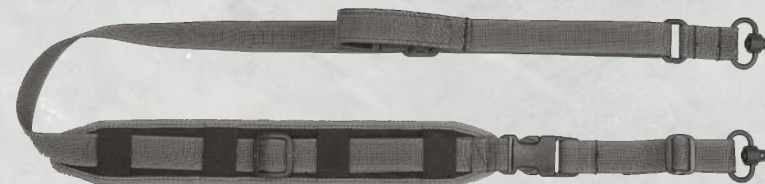
GTSL130 QS 2-POINT SENTINEL SLING - OD GREEN



GTSL129 QS 2-POINT SENTINEL SLING - COYOTE BROWN



GTSL128 QS 2-POINT SENTINEL SLING - WOLF GREY



QS 2-POINT SENTRY SLINGS w/ PUSH BUTTON SWIVELS

The QS 2-Point Sentry Sling features a 1" wide webbing with an integrated bungee cord to allow some flex for quick and rapid movement with a lighter firearm. The sleek design features our Quick Slide functionality. Simply pull forward to adjust out, or pull backwards to adjust in. Includes an emergency release buckle and is designed for a 2-Point carry style. Adjustable to size and includes heavy duty push button swivels.

GTSL131 QS 2-POINT SENTRY SLING - BLACK



GTSL132 QS 2-POINT SENTRY SLING - COYOTE BROWN



QS HEAVY GUNNER SLING w/PUSH BUTTON SWIVELS

The QS Heavy Gunner Sling features a 1-½" wide webbing and a 3" wide pad for ultra support. Whether you need the extra support or just want a more comfortable sling the Heavy Gunner is still fully capable of tactical use with our Quick Slide Loop included. Includes an emergency release buckle and is designed for a 2-Point carry style. Adjustable to size and includes heavy duty push button swivels.

GTSL133 1 - 1/2" Width Black



SLING TAIL BUTTSTOCK ADAPTOR

The Sling Tail is a simple solution to a common problem. Almost every stock AR has a slot in the buttstock for a sling to loop through. You can now add a push button base to your buttstock easily. Simply slide the keeper side through the buttstock sling slot, fit the optional O-ring over the keeper to reduce click noises and adds an extra catch lock layer. Then attach any push button swivel to the keeper base and you're done. Aluminum and Steel Construction.

GTSL117 1" Width Type III Black Anodized



SINGLE POINT BUNGEE SLING

Premium single point tactical sling features protected elastic shock cords to reduce that "dead weight" feel. Cushions the body during periods of high activity. Sling includes a 1 - 1/4" non-reflective manganese phosphate heavy duty push button swivel. Side release buckle allows for emergency egress. Two optional attachment accessories available.

GTSL52 1 - 1/4" Width Black



SINGLE POINT SLING ACCESSORIES

GTSL55 - Mil-Force Swivel Buckle



GTSL56 - Snap Hook Buckle



3-POINT SLING

Highly adaptable 3-point sling allows for multiple carry positions, including a backpack position for rough terrain or any environment that demands hands free carry. Fully adjustable; quick one handed snap release for lengthening to firing position. Designed for a 3-Point carry style, but can be used like a 2-point sling if needed. Includes heavy duty push button swivels.

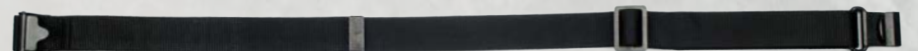
GTSL53 1 - 1/4" Width Black



CLIP HOOK STYLE SLING

With 2-point attachment and fast adjustment for length, this clip hook sling delivers a proven design preferred by military and competition shooters. Super fast operation, spring clip securely attaches to rear fixed loop.

GTSL54 1 - 1/4" Width Black



PARTS PACKS

GTHM60	12 x 1/2" Wood screw swivel studs
GTHM51	12 x 3/4" Wood screw swivel studs
GTHM52	48 x 3/4" Wood screw swivel studs
GTHM280	12 x 1/8" Machine screw swivel studs
GTHM59	12 x 1/4" Machine screw swivel studs
GTHM53	12 x 7/8" Machine screw swivel studs and nuts
GTHM54	48 x 7/8" Machine screw swivel studs and nuts
GTHM61	24 x Brass Chicago Screws
GTHM63	12 x White Spacers
GTHM64	48 x White Spacers
GTHM65	12 x Black Spacers
GTHM80	5 x ThreadLocker, 1ml Capacity
GTHM47	Single 3/4" wood screw & Single 7/8" Machine screw stud & nut
GTHM48	Single 3/4" Wood screw swivel stud w/ spacer
GTHM49	Single 7/8" Machine screw swivel stud and nut w/ spacer
GTHM50	Single 1/2" & Single 3/4" Wood screw swivel studs w/ spacer



GTHM60 - 12 x 1/2" Wood Screws

TOOLS

BASE INSTALL TOOL

Tool for installing GrovTec Threaded Push Button Swivel Bases, can be used with a hand wrench or 1/4" socket drive. Greater control for seating depth.

GTHM262 Black-Oxide Finish



SWIVEL STUD INSTALL TOOL

Heat-treated Carbon steel that won't damage stock. Hex base designed to fit any standard drill chuck or 1/4" socket drive. Wood screw shown in tool not included.

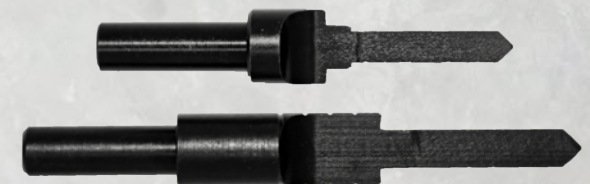
GTHM286 Black-Oxide Finish



STEP DRILL SET

Mounting drills for both wood screw and machine screw swivel studs.

GTHM75 Black-Oxide Finish



SWIVEL REFERENCE GUIDE

Make	Model	Type	Part #
American Arms	SM64 .22 Cal	Rifle	GTSW23
	TSSB10, WSSB10	Shotgun	Barrel Band
Anschutz	"54, 54MS, 54.18MS, 64, 64MS, 141, 164, 184, 520, 525 Sporter, Kadett, Exemplar Pistol, 1365, 1388, 1416, 1418, 432, 1450, 1518, 1808ED Super, Air Rifles 275, 380"	Rifle	GTSW23
Benelli	Black Eagle, Super 90	Shotgun	GTSW33
	Super Black Eagle, SBE II, M1, M2 12ga	Shotgun	GTSW291
Beretta	500S, 501SDL, 502, Super Sport X	Rifle	GTSW23
	Express S689	Rifle	Barrel Band
	Over/Under A302, A303, 1200 F Auto	Shotgun	Barrel Band
	390	Shotgun	GTSW19
	AL391 12ga DOES NOT FIT A391	Shotgun	GTSW292
	Sidebyside	Shotgun	GTSW30
Bernardelli	All Rifles	Rifle	GTSW23
	112 Sidebyside, Holland vs Sidebyside Double, Italia Game Cock, Roma No. 6 Double	Shotgun	GTSW30
Browning	Lightning BLR, B92T Bolt .22, ABolt .22, Model 1885	Rifle	GTSW23
	BLR, 81 BLR	Rifle	GTSW29
	BSS, other Sidebyside doubles	Rifle	GTSW30
	BL22 Lever action .22, BAR22, BPR 22	Rifle	GTSW40
	Model 1895	Rifle	GTSW304
	Model 1886, model 71	Rifle	GTSW303
	B1892	Rifle	GTSW301
	Pump Rifle	Rifle	GTSW43
	AutoLoading .22	Rifle	GTSW45
	B25/B125, Superposed, Over/Under, BT99 Single Barrel, Citori Over/Under	Shotgun	Barrel Band
	A500, BSA 10, BPS 10, Stalker, 10 ga., Model 12, Auto 5, BPS, Gold	Shotgun	GTSW33
	B80 Auto	Shotgun	GTSW46
	Jonathan Browning mountain Rifle	Black Powder	GTSW300
Charles Daly	Coach Gun Sidebyside Double	Shotgun	GTSW30
	over/Under, Superior Grade Single, Auto	Shotgun	Barrel Band
Crosman	1400	Rifle	GTSW07
	M70 C02	Rifle	GTSW23
	Air Rifle 73, 760, 788	Rifle	GTSW40
	Air Rifle 1, 66, 766, 2100, 2200	Rifle	GTSW43
CZ	All Rifles	Rifle	GTSW23
	440	Shotgun	GTSW33

Make	Model	Type	Part #
Dynamit Nobel (RWS)	85 Over/Under Double Rifle	Rifle	GTSW43
	RWS 34, 35, 36, 38, 45	Rifle	GTSW301
	RWS 24, 25, 26, 27, 28	Rifle	GTSW300
	Montral, Olympia, Supreme	Shotgun	Barrel Band
Harrington & Richardson	"157, 301, 317, 330, 340, 333, 165, 122, 865 Plainsman, Bolt Action .22s, 700 Automatic .22, 750 Pioneer, 5200 Sporter, 700 DLX"	Rifle	GTSW23
	749 .22	Rifle	GTSW40
	158, 1871	Rifle	GTSW45
	Buffalo Classic	Rifle	GTSW306
	Springfield 171, 172, 174, 177	Rifle	Barrel Band
	"Topper 58, 98, 258, 162, 490, 490 Green-wing, 088, 088 Jr., Pumpes, Topper Deluxe Slug, Topper Jr., Classic M988, M928, M980, Tamer"	Shotgun	Barrel Band
	099 Deluxe	Shotgun	GTSW14
	176, 176 Slug	Shotgun	GTSW23
	404 Sidebyside Double	Shotgun	GTSW30
	440	Shotgun	GTSW33
	162, 1212	Shotgun	GTSW46
Howa	1500	Rifle	GTSW23
Heckler & K-Och	1982 and later HK 940, HK270, HK300, HK630, HK630D, HK770, HK770D, HK940, SL6, SL7	Rifle	GTSW06
	Pre 1981 HK270, HK300, HK630, HK770, HK940	Rifle	GTSW23
Henry	Pump and Lever Action Rimfire	Rifle	GTSW40
	.4570	Rifle	GTSW304
	Big Boy, .30-30 (Steel frame)	Rifle	GTSW43/44
	Big Boy, .30-30 (Brass frame), .44 Mag, .357	Rifle	GTSW302
Husqvarna Interarms	Walter KKJ, Walther KKJ .22	Rifle	GTSW07
	FN Mauser Action, Mark X Continental, Mini Mark X	Rifle	GTSW23
Ithaca	Model 5X	Rifle	GTSW23
	Model 49, 49 Deluxe, 72, 72 Deluxe	Rifle	GTSW40
	51 Waterfowl and Turkey, All Mag 10s, 51 Deerslayer (1983 and newer)	Shotgun	GTSW11
	M37, M37 Deerslayer, All model 37s, English Ultra M37, 87 (pre 1989), 87 Riot, 87 Deluxe, 87 Combo, 87 Deerslayer, 87 Ultralight, Will NOT fit Deerslayer II/III (1993 and newer)	Shotgun	GTSW26
	66, Champion Single Barrel, 66 Supersingle, Supersingle Youth	Shotgun	Barrel Band
	1983 and newer 51 Deerslayer, SL900, SL300 Auto	Shotgun	GTSW33
	Deerslayer II (pre 1993)	Shotgun	GTSW46
Ithaca/SKB	100, 200, 280, 300, 400, 480 Sidebyside	Shotgun	GTSW30

Make	Model	Type	Part #
Ithaca/SKB	500, 600, 680 Over/Under 20ga	Shotgun	GTSW302
	EW .22 HBL, MHL .22 Lever	Rifle	GTSW40
	Silver Shadow, SK1, SK4D Over/Under	Shotgun	Barrel Band
JC Higgins	Model 50, 51	Rifle	GTSW23
Kreighoff	Double Rifle	Rifle	GTSW30
	Great Plains rifle, Trade Rifle	Black Powder	GTSW85
Marlin	883SS, 883N	Rifle	GTSW14
	"442, 455, 99 M1 Automatic, 989 M2 Automatic Carbine, 995, 70, 70HC, Other .22s w/clip, 56, 101 Single Shot .22, 780, 25, 25M, 25N, 15, 15Y, 15YN, 20 (pre 1987), 782, 783"	Rifle	GTSW23
	1895, 1895 S.4570	Rifle	GTSW302
	39M, 1894M	Rifle	GTSW31
	57M, .22s w/tube magazine, 605B, 781, 990, 40, 60, 75C, 39TDS, 1897S	Rifle	GTSW40
	70 Papoose	Rifle	GTSW301
	"30, 30A, 30AS, 36, 36A, 336, 336A, 336C, 336CS, 336T, 336TS, 1893, 1894, 1894C, 1894CS, 1894S, 25 MB"	Rifle	GTSW24, GTSW41, GTSW43 or 44
	Single Barrels	Shotgun	Barrel Band
	50, 512 Slugmaster	Shotgun	GTSW23
	120, 778	Shotgun	GTSW33
Mauser	Model 77, 98, 107,	Rifle	GTSW23
Maverick	88 12GA	Shotgun	GTSW31 or GTSW37
Mossberg	1700, 650K Chuckster, 900 Series, 910 Series, 144, 341	Rifle	GTSW06
	"22, 353K, 453T, 453TS, 640K, 740T, 740TS, 800 Series, 810 Series, M800 Supergrade, M800D Supergrade, 380, 383 Auto matic, Bolt Action .22s, .22s w/clip"	Rifle	GTSW23
	All .22s w/tube magazine	Rifle	GTSW40
	464 Centerfire Lever Action, 479PCS, 479RR, 472SC, 679	Rifle	GTSW43
	181, 183K, 385K, 395, 395K, 395S, 595AP5	Shotgun	GTSW23
	485T, 495T, 283T, Mossberg/Pederson Over/Under	Shotgun	Barrel Band
	Slide Action 500 series, 500 Slugster 12ga	Shotgun	GTSW31 or GTSW37
	Slide Action 500 series, 500 Slugster 20ga	Shotgun	GTSW31 or GTSW90
	3000, 1000, 712, 9200, UltiMag, 5500 MKII	Shotgun	GTSW33
	835, 590 12ga	Shotgun	GTSW33, GTSW38 or GTSW298
	Black Powder .45/70	Rifle	GTSW23
New Haven	Bolt Action 283T, 485T, 495T	Shotgun	Barrel Band
	Pump 600 Series	Shotgun	GTSW31
	742 BDL	Rifle	GTSW15

SWIVEL REFERENCE GUIDE			
Make	Model	Type	Part #
Navy Arms	1866 Yellow Boy, Model 1873, 1892 Rifles/Carbines	Rifle	GTSW43
	Ithaca Navy Hawken, Hawken Hunter	Black Powder	GTSW85
	SB2 Handi Gun	Rifle	GTSW45
New England Firearms	Pardner 10 ga., 12 ga., 20 ga., .410 Youth, Pardner Youth, Pardner Std.	Shotgun	Barrel Band
	Centerfire 900, 910 Series	Rifle	GTSW06
Remington	7400, Four, 74, 750 Auto	Rifle	GTSW16
	742 ADL, 742 FW, 742 Carbine	Rifle	GTSW17
	"740, 742 7400, Four, 760 Standard, 760A, 760 ADL, 760F, 760, Six, Sportsman 76, 7600"	Rifle	GTSW45
	760 1969 and newer, Model Six, Sportsman 76, 7600	Rifle	GTSW 18
	Nylon .22, 66AB, 66MB Nylon Stock .22s, Mohawk M10C, 522 Viper .220	Rifle	GTSW21
	"600, 660, Mohawk M600, 700 ADL pre1983, 721, 722, 788, 78 Bolt, 700 Safari, 725, 40XBRR, 541S, 580, 581 Single Shot .22s, 40XBRRKS, 541T, 522, 597"	Rifle	GTSW23
	"552A, 552 BDL, 552C, 582, .22s w/tube magazine, 572, 572A, 572 BDL"	Rifle	GTSW40
	76 Pump	Rifle	GTSW43
	7600, Six, BDL, 760 BDL Carbine	Rifle	GTSW45
	870, 870F, 870 Special Field, 870 Lightweight Ltd., 12ga	Shotgun	GTSW33, GTSW35, or GTSW297
	870, 870 Youth; 20ga	Shotgun	GTSW33 or GTSW87
	870 Express 12ga.	Shotgun	GTSW33,34, GTSW296
	870 Express 20ga.	Shotgun	GTSW33 or GTSW86
	1100, 1100 Magnum, Lightweight Field 12ga	Shotgun	GTSW33, 35, GTSW297
	17 20ga	Shotgun	GTAW304
	1187 12ga	Shotgun	GTSW33, GTSW36, GTSW296
	1187 20ga	Shotgun	GTSW89
	Parker Single Barrel, 3200	Shotgun	Barrel Band
	Parker Sidebyside Double	Shotgun	GTSW30
	XP100 w/factory stock	Pistol	GTSW21
	XP100 w/wood stock,	Pistol	GTSW23
	Gallery .22 M59, 62, G22	Rifle	GTSW40
Rossi	Lever Action M92 44 Mag / 45 Colt	Rifle	GTSW301
	Lever Action M92 357	Rifle	GTSW300
	Overland Doubles	Shotgun	GTSW30
Ruger	Model M77	Rifle	GTSW23
	Mini14, Mini14/5R Ranch, Mini Thirty	Rifle	GTSW13

Make	Model	Type	Part #
Ruger	Stainless Mini14	Rifle	GTSW14
	No. 3 Single Shot Carbines, 10/22 R Standard Carbines, Model 44 Magnum Carbine, 96/22, 96/44, 10/22 Magnum, PC4, PC9, P64GR, Mod 96, 10/22	Rifle	GTSW27
	K10/22 RB	Rifle	GTSW28
	Over/Under 12 ga.	Shotgun	GTSW46
	Over/Under 20 ga.	Shotgun	GTSW303
	Model 90 (pre 1989), 200	Rifle	GTSW06
Sauer	"24 Series: 22LR/20, 22 Mag/20, 24C 22LR/20, 24CS 22LR/20, 24D Series, 24V Series, 22 Hornet/20, 3030/20 357 Rem."	R/S	GTSW304
Savage	24 Series 22LR/410, 24D	R/S	GTSW300
	"11, 1G, 35, 35M, 36, 73, 73Y, 110 Series, 111, 112V, 116, 170, 170C, F81 340, 112FV, 114 CU, 125, 125Y, .22s w/clip, 34, 64, 65M, 93, All air rifles, 58 Bolt Action, 9478, 9478Y, Springfield Bolt Action"	Rifle	GTSW23
	99 Series, 1895 Commerative	Rifle	GTSW32
	SemiAutomatics Shotguns	Shotgun	Barrel Band
	Model 53, Bolt Action .22s	Rifle	GTSW23
	23A	Rifle	GTSW45
	SavageStevens, Springfield and Fox models, Fox BSE, B24, B, BE, Stevens 311, 311R	Shotgun	GTSW30
	"FA1, FP1, 67 Series, 79 Series, 330, 330 Set, 333, 333T, Stevens 94 Series, 675 Pump"	Shotgun	Barrel Band
	30 Series	Shotgun	GTSW31
	242 O/U	Shotgun	GTSW43
Sears	Automatic .22s, Model 5 Lever Action	Rifle	GTSW40
	Model 54	Rifle	GTSW43
	Single Barrels	Shotgun	Barrel Band
	Sidebyside Double	Shotgun	GTSW30
	Model 200, Model 300	Shotgun	GTSW33
	1700	Rifle	GTSW06
Smith and Wesson	1500 Bolt Action	Rifle	GTSW23
	M77A Air Rifle	Rifle	GTSW40
	1000 Auto, 916 Pump, 3000 Pump 5 Shot/ Wood Stock	Shotgun	GTSW33
Steyr Mannlicher	Mannlicher 1975 and earlier models L, M, S, SL, S/T, SSG Marksman	Rifle	GTSW06
	M72, SL (1976 and newer)	Rifle	GTSW23
Thompson Center	Contender	Pistol	GTSW22
	TCR 1983, Contender Carbine	Rifle	Barrel Band

Make	Model	Type	Part #
Thompson Center	Seneca, Cherokee	Rifle	GTSW40
	Pennsylvania Hunter	Black Powder	GTSW84
	Husky H5000, 260A Automatic .22, 311A .22 Bolt Action	Rifle	GTSW23
Tradewinds Corp.	Mercury Magnum Sidebyside Double	Shotgun	GTSW30
	H170 Automatic	Shotgun	GTSW33
Traditions	Pennsylvania, Hawken, Hawken Woodsman, Hunter, Frontier, Pioneer Trapper, Frontier Scout, Trophy	Black Powder	GTSW85
Uberti	Rifles/Carbines, 1866 Yellow Boy, 1873	Rifle	
Weatherby	Arthana Over/Under, Orion Over/Under, 82 Auto, 92 Pump, Centurion Automatic, Patri-cian Pump, Regency Over/Under, Olympian	Shotgun	Barrel Band
	Mark V, Vanguard	Rifle	GTSW23
Webley & Scott	Osprey, Osprey Superhawk	AIR	GTSW23
	Bolt Actions, 815, 832, 850, .22 w/clip,	Rifle	GTSW23
Western Field	72, 79	Rifle	GTSW31
	50C, 172 Bolt Actions	Shotgun	GTSW23
	Single Barrels	Shotgun	Barrel Band
	Sidebyside Double	Shotgun	GTSW30
	550 20GA	Shotgun	GTSW90
	550 12GA	Shotgun	GTSW37
	600	Shotgun	GTSW33
	"70 Classic Compact, 70 Westerner, 670, 770, Ranger, 490 Auto .22 w/clip, Bolt Action .22s, 43, 75"	Rifle	GTSW23
Winchester	52B, 1895	Rifle	GTSW304
	70A	Rifle	GTSW25
	94/22 Series, 72, 150, 190, 290, Auto .22s w/ tube magazines	Rifle	GTSW40
	"63, 64, 94 Series, 94 Chief Crazy Horse, 94 Big Bore, 1866, 1873, 1886, 1892"	Rifle	GTSW24, GTSW43
	88, 100	Rifle	GTSW12
	Sidebyside Double	Shotgun	GTSW30
	101, 101 XTR, 201 12ga	Shotgun	GTSW301
	101, 101 XTR, 201 20 ga.	Shotgun	GTSW302
	42, .410 ga	Shotgun	GTSW300
	1200, 1300 12ga	Shotgun	GTSW39 or GTSW294
	Over/Under, Single barrels, 37A, 96, 1400, 1400 Mark II Autos, 1500 Series, Ranger Auto	Shotgun	Barrel Band
	SuperX2, SuperX3	Shotgun	GTSW293
	Ranger Pump, Super X, 59, Old Style 1200, 97 Riot	Shotgun	GTSW33
	Model 12 12ga	Shotgun	GTSW46
	Model 97 12ga	Shotgun	GTSW306

HOLSTER REFERENCE GUIDE

Make	Model	Type	Barrel Length	Inside Pant
Amt	Backup	Auto	2½	10
Amt	Backup .45	Auto	3	16
Amt	Skipper	Auto	4¼	15
Amt	Hardballer .45	Auto	5	5
Amt	Lightning .22	Auto	5	5
Astra	A70, A75	Auto	3½	16
Astra	A80, A90, A100	Auto	3¾	15
Astra	Constable	Auto	3½	1
Astra	All double action	Revolver	3	0
Astra	All double action	Revolver	4	2
Auto Ordnance	Pitbull	Auto	3½	16
Auto Ordnance	General	Auto	4¼	15
Auto Ordnance	1911 A1	Auto	5	5
Bauer	.22, .25 Cal.	Auto	2	10
Beretta	20, 21, 950 Series, Bobcat, Jetfire, Minx, Tomcat	Auto	2½	10
Beretta	34, 70S, 70SP, 81, 82, 82B, 84, 84B, 84F, 85,	Auto	2½	10
Beretta	85B, 85F, 86, 87, 90, Puma, Jaguar	Auto	3½ - 3¾	1
Beretta	76P, 76W, 89	Auto	5 6	5
Beretta	"92, 92S, 92SB, 92D, 92F, 92G, 96, 96F, 92FS, Brigadier 92FC,"	Auto	5	5
Beretta	92FC, 92 Centurion, 96 Centurion, 92D Centurion, 96D Centurion	Auto	4¼	15
Beretta	92SBC, 92FM	Auto	4¼	15
Beretta	92FS Vertec	Auto	4¼	5
Beretta	PX 4 Storm	Auto	4	5
Beretta	8000, 8040, 8045 Cougar, 9000	Auto	3½	15
Beretta	Nano W/Lasermix	Auto	3	12
Bersa	Thunder 380, Series 95	Auto	3½	1
Browning	BDA .380	Auto	3¾	1
Browning	Hi Power 9mm, .40	Auto	4¼	15
Browning	BDM 9mm, BPM D, BRM DOA	Auto	4¼	15
Browning	BDA 9mm, .38 Super, .45 ACP	Auto	4¼	15
Colt	Mustang, Mustang Plus II, Mustang Pocketlite, Pony	Auto	2¾	10
Colt	Officers ACP .45, Double Eagle Officers .45, 1991 A1 Compact	Auto	3¾	16
Colt	380 Government Model, Gov't. Pocketlite, Pocket 9	Auto	3¾	1

For Trail Pack and Multi-Fit Holster sizing visit the size charts on our holster pages 16-17

Make	Model	Type	Barrel Length	Inside Pant
Colt	Commander, Combat Commander, Lightweight Commander, 1991 A1 Commander	Auto	4¼	15
Colt	Combat Elite, Delta Elite, Gov't. Model, Gold Cup,	Auto	5	5
Colt	Combat Target, 1991 A1, 1911	Auto	5	5
Colt	Agent, Cobra, Commando, Detective SPL, Lawman, DSII/38 SPF VI	Revolver	2 3	0
Colt	King Cobra, Peacemaker, Python, Three Five Seven, Trooper, Mark III	Revolver	4	2
Colt	Diamondback	Revolver	4	2
CZ	CZ83	Auto	3 ½	1
CZ	CZ75, CZ85	Auto	4 ¾	15
European	European .22, .380, .32	Auto	3.15	1
American	Witness Subcompact, FAB92		3.33	16
Armory (EAA)	Witness, Witness Sport, Witness Combo, FAB2		4¾	15
FN	49	Auto	4	15
FN	5.7	Auto	5	5
Glock	19, 23, 32	Auto	4	16
Glock	17, 22, 31	Auto	4¼	15
Glock	20, 21	Auto	4½	15
Glock	29, 30	Auto	3¾	16
Glock	42	Auto	3.25	1
Glock	43	Auto	3.41	1
Glock	43x	Auto	3.41	1
Glock	48	Auto	3.41	12
Glock	26, 27, 33, G28	Auto	3¾	12
Glock	42 W/Lasermix	Auto	3.25	16
HK	P7, P7M8, P7M10, P7M13	Auto	4	16
HK	P9S	Auto	4	15
HK	P2000 V2	Auto	3¾	15
HK	USP 9mm, .40, .45, USP Compact	Auto	3½ - 4¼	15
HiPoint	9mm Compact, .380 Compact	Auto	3¾	16
Jennings	J 22, J 25	Auto	2½	10
Jennings	48, 9mm 13 Shot	Auto	3 - 4	1
Kahr	CW9	Auto	3	12
Kahr	K9, P9 9mm, K40	Auto	3¾	16
Kahr	PM9 W/Lasermix	Auto	3	12
KBI	PMK, .380, SMC .380	Auto	4	1

Make	Model	Type	Barrel Length	Inside Pant
KBI	PJK 9HP	Auto	4¾	5
KBI	PSP 25	Auto	2	10
KelTec	P 119mm, P 32, P 40	Auto	3.1	12
KelTec	P3AT	Auto	2¾	10
KelTec	P3AT w/Laser	Auto	2¾	60
Kimber	Custom, Royal, Stainless, Gold Match, Stainless Gold Match, Gold Combat, Gold Combat Stainless Steel, Super Match, Custom CDP	Auto	5	5
Llama	MiniMax, MiniMax II	Auto	3¾	16
Llama	1XA, VIII, XI, Omni, Plus Other Large Frame Autos	Auto	4 - 5	5
Kimber	Compact, Compact Stainless Steel, Compact Aluminum Stainless Steel, Pro Carry, Stainless Steel Pro Carry, Pro Carry HD, Compact CDP, Pro CDP	Auto	4	15
Kimber	Ultra Carry, Stainless Steel Ultra Carry, Ultra CDP	Auto	3	16
Les Bear	S.R.P.	Auto	5	5
Llama	XV, XA, 111A, MicroMax, Plus Other Small Frame Autos	Auto	3 4	1
Makarov	Makarov 9x18mm	Auto	3¾	1
Para Ordnance	P12 .45, OPS, Companion	Auto	3¾	16
Para Ordnance	P13 .45, LTC, Tac S	Auto	4¼	15
Para Ordnance	P14 .45, P16, LDA, SSP	Auto	5	5
Raven	P 25	Auto	2½	10
Ruger	LCP	Auto	2¾	10
Ruger	P85, P88, P90, P91, P93, P94, P95, KP90, KP93, KP94	Auto	4 - 4½	5
Ruger	SR9, SR40	Auto	4 - 4½	15
Ruger	SR22 W/Lasermix	Auto	3.5	16
Ruger	KP98	Auto	4 - 4½	15
Ruger	SR9C	Auto	3.5	16
Ruger	KP345PR	Auto	4	15
Ruger	P345	Auto	4	15
Ruger	LC9	Auto	3.12	12
Ruger	LC9 W/Lasermix	Auto	3.12	12
Ruger	Security Six, Service Six, Speed Six, SP101	Revolver	2¾- 3	0
Ruger	SP101 (except spurless hammer)	Revolver	2	36
Ruger	Security Six, Service Six, Speed Six, GP100	Revolver	4	2

HOLSTER REFERENCE GUIDE

Make	Model	Type	Barrel Length	Inside Pant
Ruger	Security Six, Service Six, Speed Six, GP100	Re-volver	4	2
Sig/Sauer	229R (DAK)	Auto	3¾	16
Sig/Sauer	P220ST .45 Cal, P226R	Auto	4¾	15
Sig/Sauer	P230, P232	Auto	3¾	1
Sig/Sauer	P220, P226	Auto	4¾	15
Sig/Sauer	P225, P228, P229, SP2340, SP2009 9mm	Auto	3¾	16
Sig/Sauer	P239	Auto	3¾	16
Sig/Sauer	P245	Auto	3¾	15
Sig/Sauer	P365, P365 SAS, P365 X	Auto	3.1	1
Smith & Wesson	M&P Shield	Auto	3	12
Smith & Wesson	M&P Shield W/Lasermx	Auto	3.1	16
Smith & Wesson	M&P	Auto	4	15
Smith & Wesson	"469, 669, 908, 3913, 3914, 3953, 3954, 4013, 4013TSW, 4053, 5903SSV, 5943SSV, 6904, 6906, 6944, 6946"	Auto	3¾	16
Smith & Wesson	"39, 59, 410, 411, 439, 457, 457D, 459, 539, 559, 639, 659, 909, 910, 915, 3904, 3906, 4003, 4004, 4006, 4026, 4043, 4044, 4046, 4516, 4536, 4556, 5903, 5904, 5905, 5906, 5926, 5943, 5944, 5946, 5967, 9mm, .40, Subcompact .45"	Auto	3¾ - 4	15
Smith & Wesson	1066, 1076, 1086, 4566, 4567, 4576, 4586	Auto	4¾	15
Smith & Wesson	645, 745, 1006, 4506, 4526	Auto	5	5
Smith & Wesson	2213, 2214	Auto	3	1
Smith & Wesson	Sigma Full Size 9mm, .40, SW9E, SW40E, SW40VE	Auto	4 - 4¾	15
Smith & Wesson	SW9VE	Auto	4	16
Smith & Wesson	Sigma Compact 9mm, .40	Auto	4¾	16
Smith & Wesson	Sigma Compact .380	Auto	3	1
Smith & Wesson	52	Auto	5	5
Smith & Wesson	SW99	Auto	4¾	15
Smith & Wesson	SW1911	Auto	4	15
Smith & Wesson	SW1911	Auto	5	5
Smith & Wesson	SW99	Auto	4	15

Make	Model	Type	Barrel Length	Inside Pant
Smith & Wesson	SW1911	Auto	4¾	15
Smith & Wesson	SW1911	Auto	5	5
Smith & Wesson	"J Frames w/hammer spur 31, 34, 36, 37, 60, 317, 317LS, 331, 337, 632, 634, 637"	Re-volver	2	36
Smith & Wesson	"J Frames w/shrouded or concealed hammers, including: 38, 40, 42, 49, 332, 342, 442, 631, 638, 640, 642, 649, 940"	Re-volver	2.15	36
Smith & Wesson	J Frames w/concealed hammers, incl: 242, 640, 940	Re-volver	3	0
Smith & Wesson	"All K Frames, including: 10, 12, 13, 15, 19, 64, 65, 66, 547"	Re-volver	2 - 3	0
Smith & Wesson	"All K Frames, including: 10, 12, 13, 14, 15, 16, 17, 18, 19, 33, 48, 53, 64, 65, 66, 67, 547, 581, 586, 681, 686, 686+, L Frame (7 shot)"	Re-volver	4	2
Springfield Armory	Commander	Auto	4¾	16
Springfield Armory	1911 A1, Defender, Omega	Auto	5	5
Springfield Armory	P9	Auto	4¾	15
Springfield Armory	P9 Compact	Auto	3¾	16
Springfield Armory	XD Compact	Auto	3	0
Springfield Armory	XD 9, XD 40, XD357	Auto	4	16
Springfield Armory	XD 9 Sub, XD40 Sub, XDS	Auto	3	12
Springfield Armory	HS 2000	Auto	4	5
Taurus	"65, 66, 73, 74, 80, 82, 83, 415, 431, 441, 445, 605, 741, 817, 941"	Re-volver	2 - 3	0
Taurus	"65, 66, 80, 82, 83, 84, 94, 425, 431, 441, 607, .44 Mag., 608, 627, 669, 689, 741, 827, 941"	Re-volver	4	2
Walther	TPH22, TPH25	Auto	2½	10
Walther	PP, PPK, PPK/S, PP Super	Auto		1
Walther	P99	Auto	4	15
Walther	P38, P38IV	Auto	4½ - 5	5
Walther	P5	Auto	4¾	16
Walther	P22	Auto	3¾	16
Walther	P22	Auto	5	5

Don't see your firearm listed?

Feel free to give us a call or send us an email and we will do our best to help you size your firearm.

503-557-4689 — info@grovttec.com



WARNING: Some of these products can expose you to chemicals including lead, which is known to the State of California to cause cancer and birth defects or other reproductive harm. For more information go to www.P65Warnings.ca.gov.