

CakCity Watches

Analog Quartz
Watch Operation
Manual

Instruction Book:

1. Adjust the watch without date ----- Page (2-4)
2. Adjust the watch with date ----- Page (5-7)
3. Adjust the band and buckle -----Page (6-10)
4. Warranty ----- Page (11)
5. Waterproof -----Page(12)
6. Precaution --- Page (13-17)

— 1 —

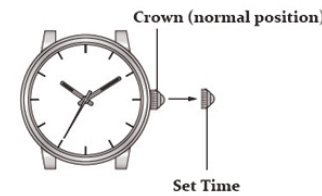
Please Noted: The watch shown in the picture may be different from the one you bought.

Three-hand watch without calendar display

If your watch has a spiral crown, unscrew it before setting the time, then pull out the crown. After setting, be sure to push the crown back to the normal position.

— 2 —

Set Time



1. Pull the crown out to stop second hand and the second hand is at the 12 o'clock position.

2. Turn the crown to set the time.
Note: When setting the minute hand, advance it 4

— 3 —

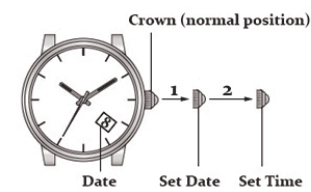
to 5 minutes ahead of the desired time and then turn it back to the exact time.

3. After the set time, firmly push the crown back to the normal position. See the second hand begins to run.

Please note: The watch is not waterproof when the crown is released. After setting, the crown must be screwed back into place.

Three-hand watch with date display

— 4 —



Set Date

1. Pull the crown out one space.
2. Set the date by turning the crown.
Please avoid changing the date between 8:00PM and 1:00AM (the date may not change until the next day)
3. Push crown back to normal position.

— 5 —

Set Time

1. When the second-hand points to the 12 o'clock position, pull out the crown to the second position, and the second-hand stops rotating.

2. Turn the crown to set the time.
3. Push the crown back to normal position.

Stainless Steel Band-Adjustment Diagram:

How to adjust the length of the watch bracelet:

1. According to the size of the wrist, determine the number of straps to be removed.

— 7 —

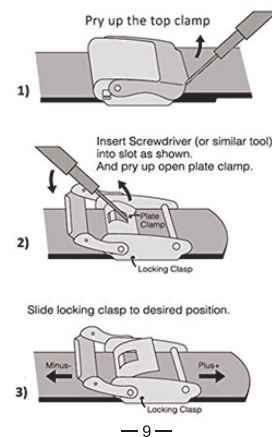
Notes on disassembly process:

1. We recommend to disassemble the double number of links as much as possible, and disassemble evenly on both sides of the bracelet, so as to ensure that the buckle is centered and comfortable to wear.
2. Please observe both sides of the bracelet when disassembling, because there are pinholes on both sides, do not use disassembly tools on the convex holes.
3. When installing the bracelet, if the steel needle cannot be fully pushed in, tap it lightly

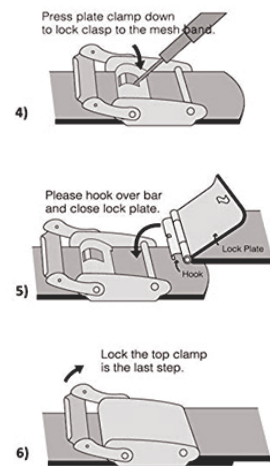
— 8 —

with a hard object until the steel needle completely enters the pinhole.

How to adjust the buckle:



— 9 —



— 10 —

Warranty:

The warranty period is one year, and the warranty period starts from the day of purchase.

The warranty does not include:
-Battery life.
-Normal wear and aging (for example scratches on the surface; color changes or strap changes; electroplating, etc.).
-Any damage to any part of the watch caused by improper use /abuse, carelessness, negligence, accident (impact, knock,

— 11 —

squeeze, surface wear, and others), incorrect use, and failure to follow the instruction manual.

-A CakCity watch that has been dismantled by any unauthorized person (for example: replacing the battery, providing repairs) or a CakCity watch that has changed its original state. Glad to be at your service.

Waterproof:

| Waterproof Depth | Swims in water | Hot Bath | Car Wash | Shower | Swimming | Boat | Swimming | Deep sea diving |
|------------------|----------------|----------|----------|--------|----------|------|----------|-----------------|
| 20M-SAT | ✓ | ✓ | ✓ | ✓ | ✓ | ✓ | ✓ | ✓ |
| 50M-SAT | ✓ | ✓ | ✓ | ✓ | ✓ | ✓ | ✓ | ✓ |
| 100M-110 | ✓ | ✓ | ✓ | ✓ | ✓ | ✓ | ✓ | ✓ |
| ATM | ✓ | ✓ | ✓ | ✓ | ✓ | ✓ | ✓ | ✓ |

— 12 —

Precaution:

1. Temperature: Do not expose the watch to extreme temperature changes (immediately immersed in cold water after sun exposure) or extreme temperatures (above 60°C or below 0°C).

2. Magnetic field: When using the watch, please avoid contacting the watch with extra strong magnetic fields or magnetic objects.
3. Shock: Avoid thermal shock and other shocks, they will damage your watch.

4. Harmful products: Avoid direct contact with solvents, detergents, perfumes, cosmetics, etc., which may damage the strap, case, or gasket.
5. Maintenance and repair: regularly use a soft cloth to clean the dial and strap to prevent corrosion caused by sweat. After the watch is soaked in seawater, it should be cleaned in time and thoroughly dried.
6. When the quartz watch is

— 14 —

7. If you find that the battery is exhausted, you should send it to the repair department for repair or replace it with a new battery to prevent the old battery leakage from corroding the machine parts.
8. In case of a watch with a screw-in crown, do not pull it out hard. Please turn counterclockwise to open the locked crown. After adjusting the time, turn the crown clockwise and push it into the lock to avoid

— 15 —

9. The water-resistance of the watch cannot guarantee permanent reliability. It may be affected by the aging of the gasket or the unexpected impact of the crown. Any watch is not waterproof to steam or water mist, please avoid contact with water vapor and mist.
10. Excessive water contact will shorten the life of the watch. Do not trigger the crown or buttons of the watch underwater, be sure to press or tighten the crown after each operation.
11. Under no circumstances

— 16 —

should you disassemble the watch yourself.

If you have any questions, please contact us in time. service@cakcity.com

— 17 —