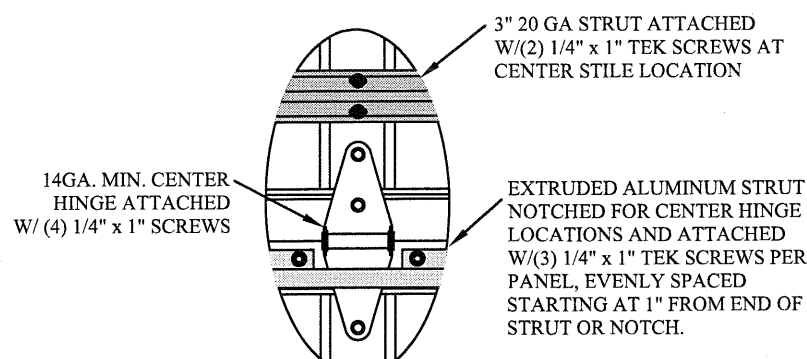
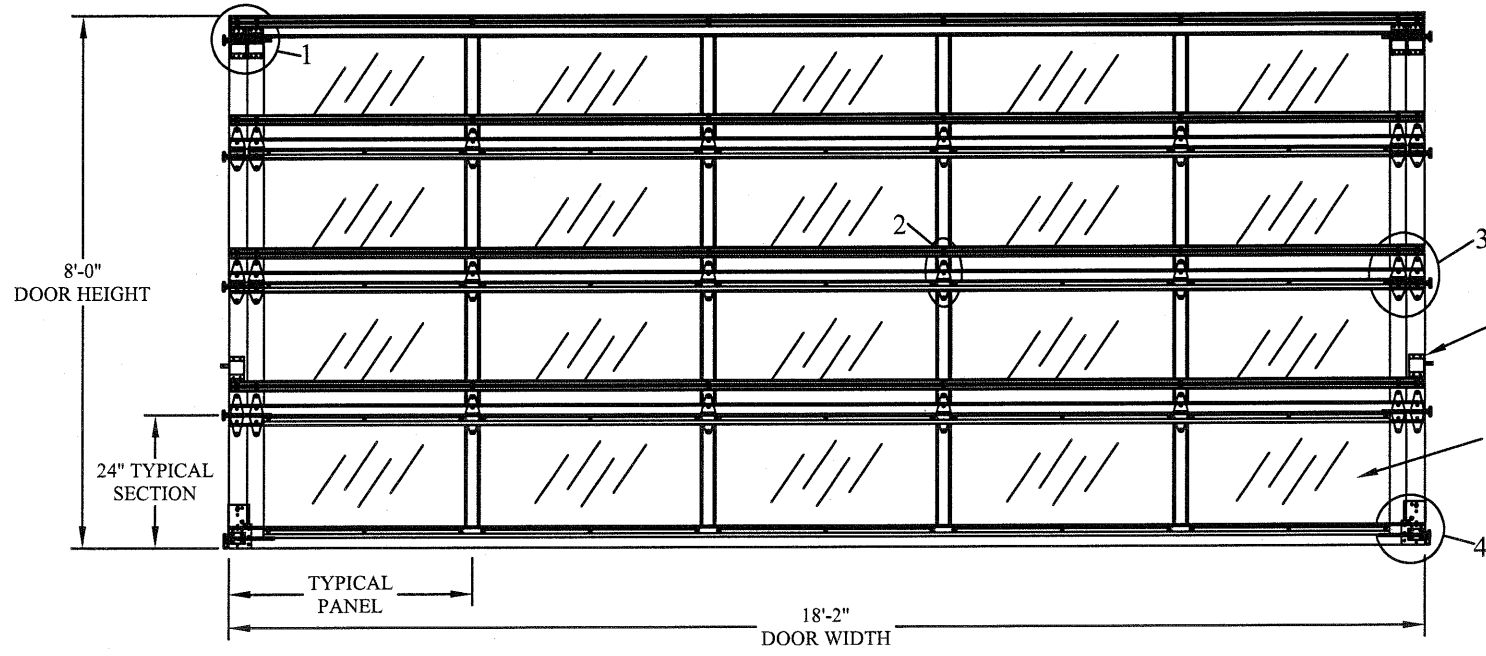


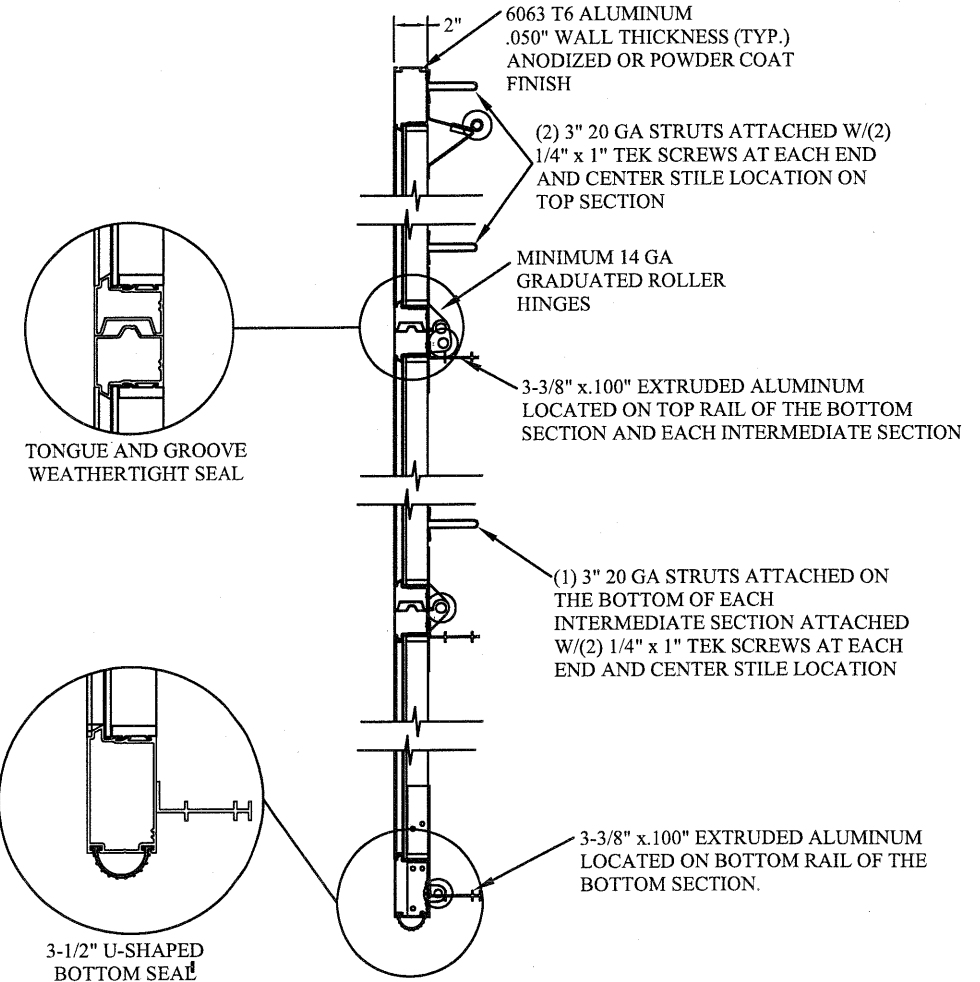
TYPICAL TOP FIXTURES  
N.T.S. 1



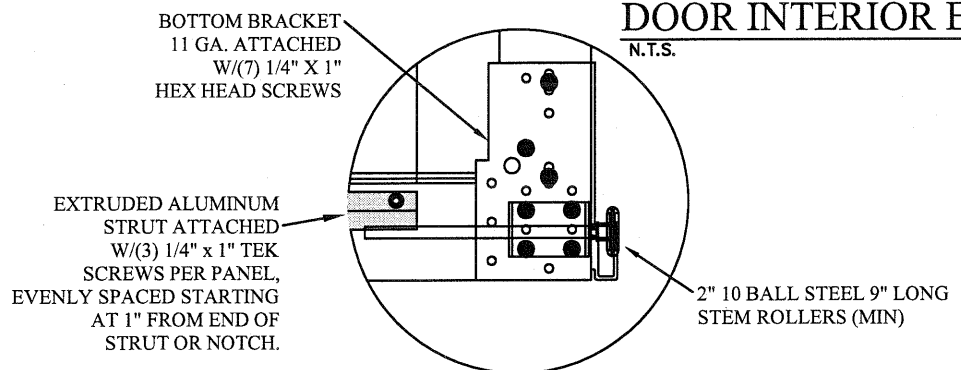
TYPICAL CENTER HINGE W/STRUT  
N.T.S. 2



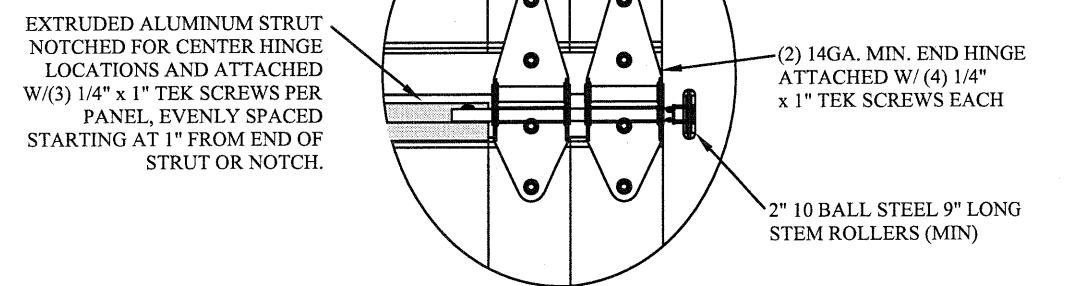
DOOR INTERIOR ELEVATION  
N.T.S.



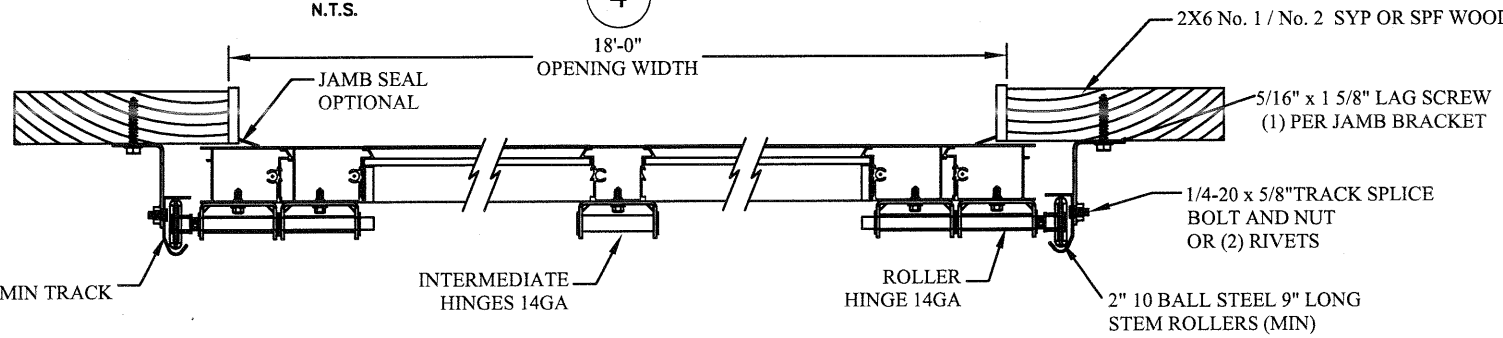
ALUMINUM SECTION PROFILE  
N.T.S.



TYPICAL BOTTOM BRACKET  
N.T.S. 4



TYPICAL END HINGE  
N.T.S. 3



2" BRACKET MOUNT TO WOOD JAMB DETAIL  
N.T.S.

THE METHOD OF TESTING WAS IN SUBSTANTIAL CONFORMANCE WITH THE PROCEDURES DESCRIBED IN DASMA 108. THE PRESSURES SHOWN ON THE DRAWINGS WERE CALCULATED USING ASCE 7-16 WITH THE FOLLOWING PARAMETERS (5 FEET OF DOOR WIDTH IN END ZONE, ROOF SLOPE 10° OR LESS):

WIND SPEED (MPH)	171	155	147	141	135
EXPOSURE LEVEL	B	C	C	D	D
MEAN ROOF HEIGHT	30'	15'	25'	15'	25'

REV	DESCRIPTION OF REVISIONS	DATE	BY

MAX SIZE 18'2" x 24'

DESIGN LOADS +23.8 PSF -26.8 PSF

TEST LOADS +35.7 PSF -40.2 PSF

Thomas L. Shelmerdine, PE (FL PE #0048579) Structural Solutions, PA (FL Firm #29412)

FL

THOMAS L. SHELMERDINE LICENSE No. 48579 STATE OF FLORIDA PROFESSIONAL ENGINEER

dba Structural Solutions of North Carolina, Inc. 5921-G W. Friendly Ave., Greensboro, NC 27410



MODEL 3550HD AMARR 3552  
MODEL VISTA AMARR 3552

SIZE	DRAWN BY	RLR	DATE	10/3/17	DRAWING NUMBER
B	CHECKED BY	RLR	DATE	10/4/17	IBC-3618-132-63

ENTREMATICS  
165 CARRIAGE COURT WINSTON-SALEM, N.C. 27105

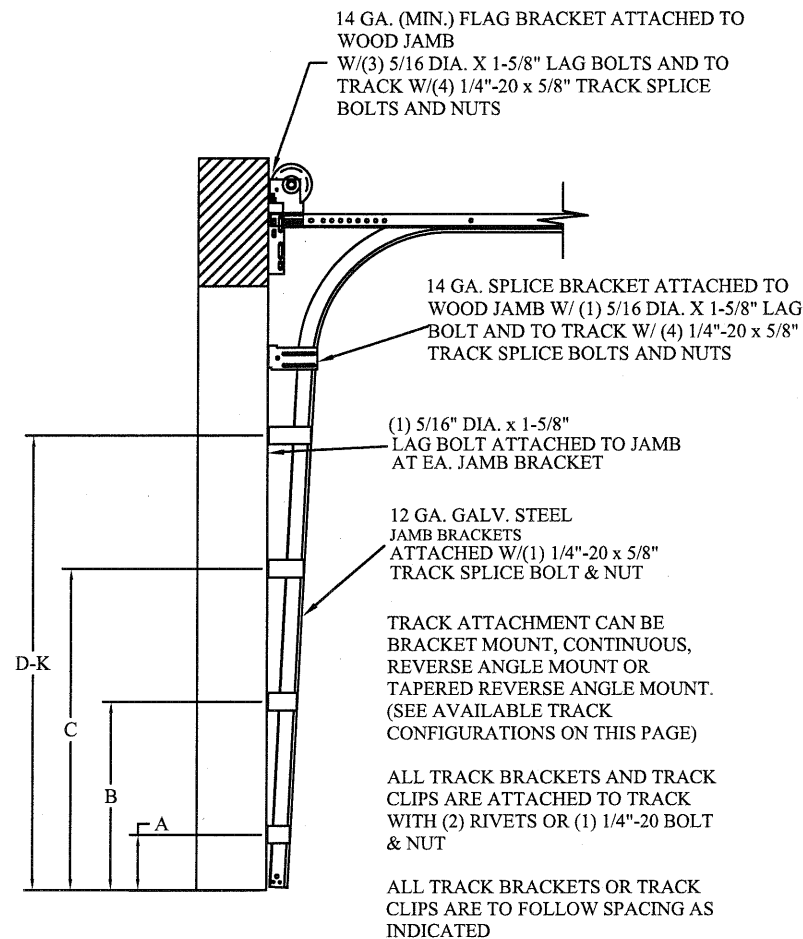
SHEET 1 OF 3



TABLE 1

Section Width		Center Stile Locations (Measured from Left Edge)				Max Design Loads Allowed	
(ft)	(in)	1st (in)	2nd (in)	3rd (in)	4th (in)	Positive (PSF)	Negative (PSF)
17'	0	39.0	81.0	123.0	165.0	24.7	27.9
17'	2	40.0	82.0	124.0	166.0	24.7	27.9
17'	4	41.0	83.0	125.0	167.0	24.7	27.9
17'	6	42.0	84.0	126.0	168.0	24.7	27.8
17'	8	43.0	85.0	127.0	169.0	24.4	27.5
17'	10	44.0	86.0	128.0	170.0	24.2	27.2
18'	0	43.5	86.5	129.5	172.5	24	27
18'	2	44.5	87.5	130.5	173.5	23.8	26.8

\*CONTACT ENGINEERING FOR SIZES LESS THAN 17'0 WIDE



TRACK CONFIGURATION FOR UP TO 24' TALL DOORS  
SEE TABLE 2

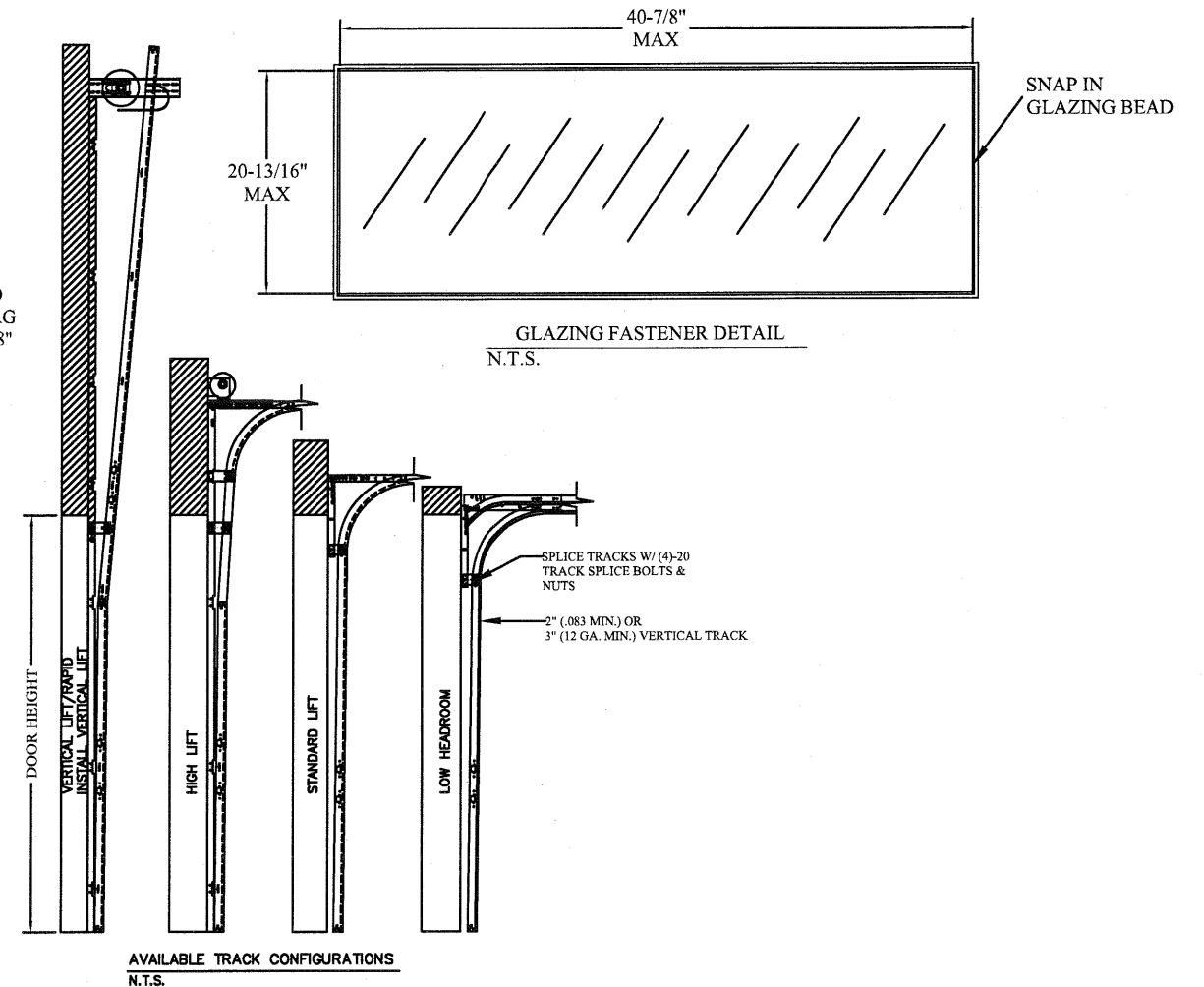


TABLE 2

DOOR HEIGHT	TRACK ATTACHMENT																				TYPICAL SPLICE				
	A	B	C	D	E	F	G	H	I	J	K	L	M	N	O	P	Q	R	S	T		U	V	W	
7' 0"	10.0"	22"	34"	46"	58"	70"																		76"	
7' 6"	10.0"	22"	34"	46"	58"	70"	82"																		82"
8' 0"	10.0"	22"	34"	46"	58"	70"	82"																		88"
9' 0"	10.0"	22"	34"	46"	58"	70"	82"	94"																	100"
9' 6"	10.0"	22"	34"	46"	58"	70"	82"	94"																	106"
10' 0"	10.0"	22"	34"	46"	58"	70"	82"	94"	106"																112"
11' 0"	10.0"	22"	34"	46"	58"	70"	82"	94"	106"	118"															124"
12' 0"	10.0"	22"	34"	46"	58"	70"	82"	94"	106"	118"	130"														136"
13' 0"	10.0"	22"	34"	46"	58"	70"	82"	94"	106"	118"	130"	142"													148"
14' 0"	10.0"	22"	34"	46"	58"	70"	82"	94"	106"	118"	130"	142"	154"												160"
15' 0"	10.0"	22"	34"	46"	58"	70"	82"	94"	106"	118"	130"	142"	154"	166"											172"
16' 0"	10.0"	22"	34"	46"	58"	70"	82"	94"	106"	118"	130"	142"	154"	166"	178"										184"
17' 0"	10.0"	22"	34"	46"	58"	70"	82"	94"	106"	118"	130"	142"	154"	166"	178"	190"									196"
18' 0"	10.0"	22"	34"	46"	58"	70"	82"	94"	106"	118"	130"	142"	154"	166"	178"	190"	202"								208"
19' 0"	10.0"	22"	34"	46"	58"	70"	82"	94"	106"	118"	130"	142"	154"	166"	178"	190"	202"	214"							220"
20' 0"	10.0"	22"	34"	46"	58"	70"	82"	94"	106"	118"	130"	142"	154"	166"	178"	190"	202"	214"	226"						232"
21' 0"	10.0"	22"	34"	46"	58"	70"	82"	94"	106"	118"	130"	142"	154"	166"	178"	190"	202"	214"	226"	238"					244"
22' 0"	10.0"	22"	34"	46"	58"	70"	82"	94"	106"	118"	130"	142"	154"	166"	178"	190"	202"	214"	226"	238"	250"				256"
23' 0"	10.0"	22"	34"	46"	58"	70"	82"	94"	106"	118"	130"	142"	154"	166"	178"	190"	202"	214"	226"	238"	250"	262"			268"
24' 0"	10.0"	22"	34"	46"	58"	70"	82"	94"	106"	118"	130"	142"	154"	166"	178"	190"	202"	214"	226"	238"	250"	262"	274"		280"

ALL TRACK ATTACHMENTS +/- 2" ALLOWED USING SYP OR SPF NO.2 OR BETTER ONLY

REV	DESCRIPTION OF REVISIONS	DATE	BY

MAX SIZE  
18'2 x 24'

DESIGN LOADS  
+23.8 PSF  
-26.8 PSF

TEST LOADS  
+35.7 PSF  
-40.2 PSF

THOMAS L. SHELMERDINE  
LICENSE  
No. 48579  
STATE OF FLORIDA  
PROFESSIONAL ENGINEER  
FL

Thomas L. Shelmerdine, PE (FL PE #0048579)  
Structural Solutions, PA (FL Firm #29412)

dba Structural Solutions of North Carolina, Inc.  
5921-G W. Friendly Ave., Greensboro, NC 27410

**MODEL 3550HD AMARR 3552**  
**MODEL VISTA AMARR 3552**

SIZE	DRAWN BY	RLR	DATE	10/3/17	DRAWING NUMBER
B	CHECKED BY	RLR	DATE	10/4/17	IBC-3618-132-63

ENTREMATIC  
165 CARRIAGE COURT WINSTON-SALEM, N.C. 27105

SHEET 3 OF 3