

RS Racing EVO6 Batten Cap Replacement Instructions



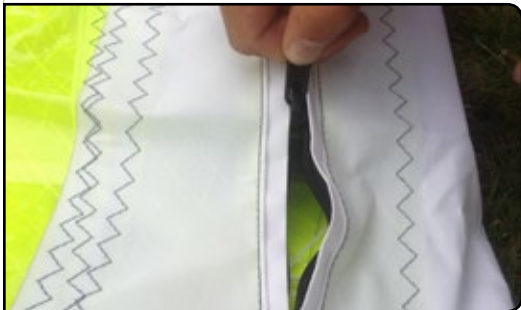
Step 1

Pull the batten of the broken cap 5cm out



Step 2

Find the necessary tools and spare parts inside your sail bag

**Step 3**

Open the zip

**Step 4**

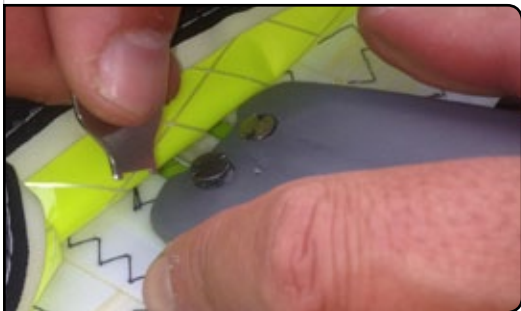
Pull out the cam

**Step 5**

All the way out and push it down flat against the ground

**Step 6**

Use the tool to undo the screws on your cam



Step 7

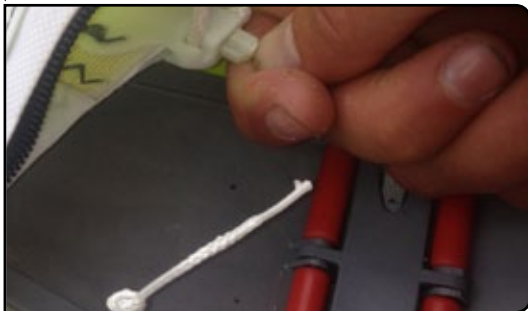
If you lose some screws, there are extra ones in your sail bag



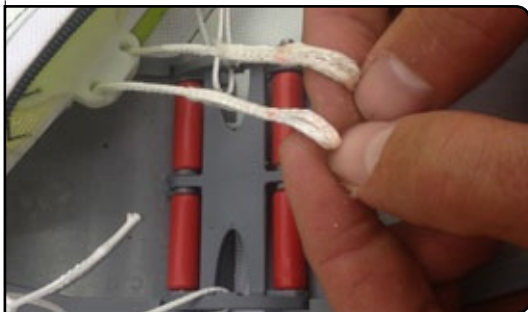
Step 8

Once both screws are released, you can open the cam and get access to the cap

Pull the rope out of broken parts

**Step 9**

If you did not pull the batten out far enough, push it now

**Step 10**

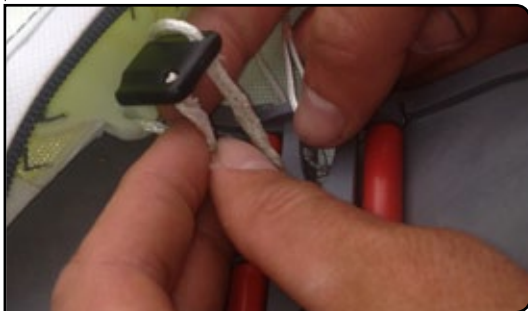
Now you are ready to take the new cap from your sail bag and feed the ropes through the hole

**Step 11**

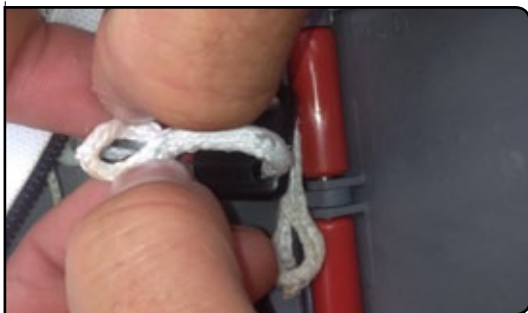
Roll the end of the rope to make it tight

**Step 12**

Feed the rope closest to the top of the sail through the black cap, from above

**Step 13**

The other rope goes from below and up through the hole

**Step 14**

Spread the end of the ropes to open the hole

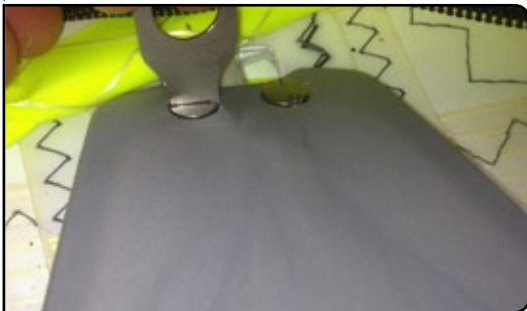


Step 15

Slip the rope loop over the metal. The rope closest to the top of the sail goes underneath the sleeve material and the other rope goes above.

Next photo shows a close-up of this.



**Step 16**

Close the cam again and tighten the screws

**Step 17**

Push the batten all the way back in and make sure that the tip fits into the new cap.