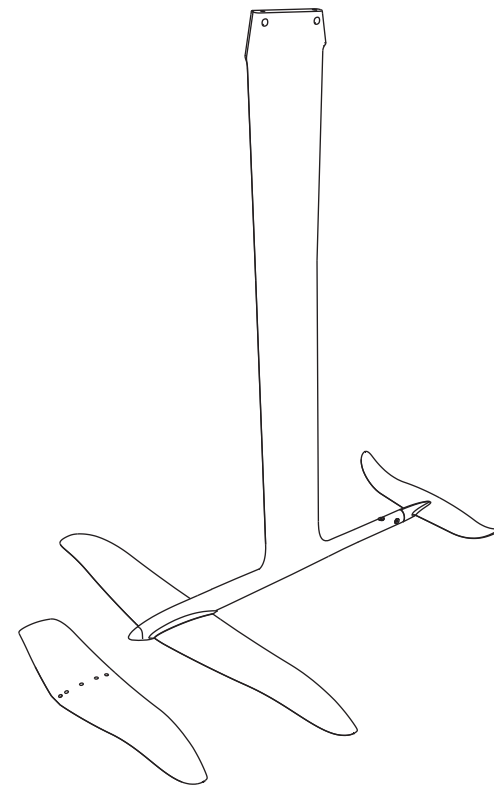


*RS:FLIGHT*F4 **ASSEMBLY MANUAL**



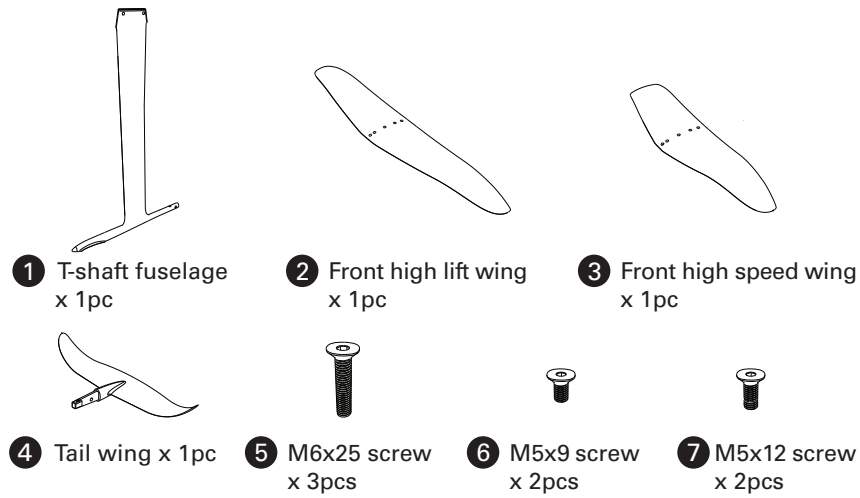
www.neilpryde.com

NEILPRYDE

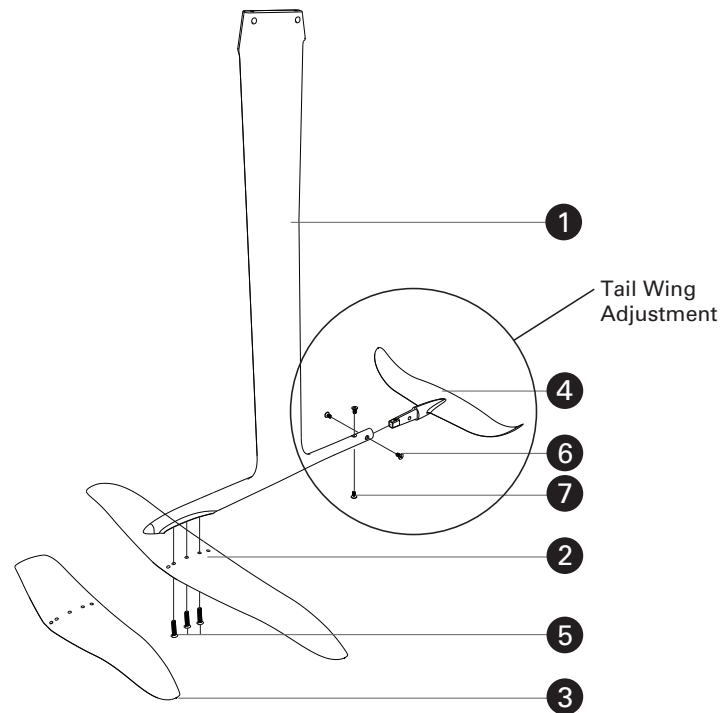
Tools:



Parts:

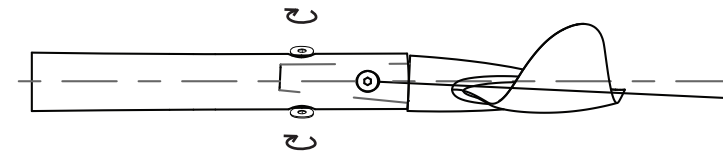


Exploded:

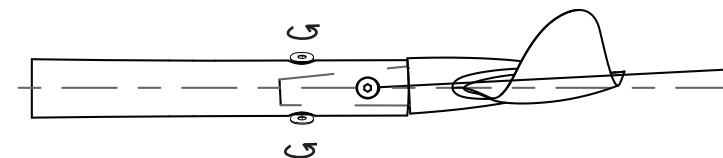
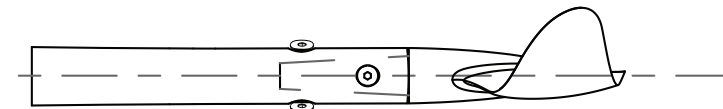


Tail Wing Adjustment:

Before adjusting the angle of the tail wing first loosen the two side screws to make sure tail is free to pivot up and down.
In order to tilt the wing up, loosen the upper screw by 5 turns from the middle position and then tighten the bottom screw until it gets tight. Now re-tighten the top screw as well as side screws to ensure solid, movement free connection.
In order to tilt the wing down, loosen the bottom screw by 5 turns from the middle position and then tighten the top screw until it gets tight. Now re-tighten the bottom screw as well as side screws to ensure solid, movement free connection.



Lower lift and less drag at higher speeds.



More lift and stability at lower speed.