



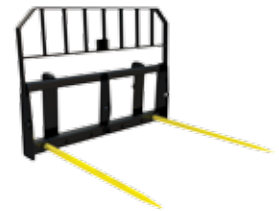
Pallet Forks - The safest on the market

Digga's pallet forks with floating tyne design offer unrivalled quality and safety for skid steer loaders.

Features:

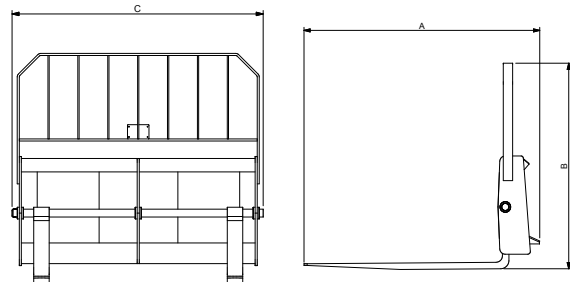
- Australian made frame designed from quality steel.
- Load rating tested to Australian Standard AS 2359.1
- Floating tyne design for increased safety.
- Easy quick fit attachment for most skid steer loaders.
- Easy width adjustment.
- 1200kg, 1600kg and 1900kg load ratings available.

Digga Bale Spears/Pallet Fork combo frame also available to pick up bales with minimum effort.



Machine Suitability:

Skid Steer Loaders, Front End Loaders and Telehandlers



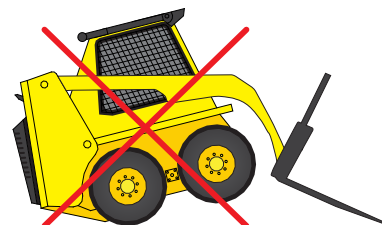
| Specifications | 1200kgs | 1600kgs | 1900kgs |
|----------------|---------|---------|---------|
| Length (A) | 1270mm | 1270mm | 1270mm |
| Height (B) | 1120mm | 1120mm | 1120mm |
| Width (C) | 1224mm | 1224mm | 1224mm |
| Weight | 110kgs | 125kgs | 173kgs |

FLOATING TYNE DESIGN

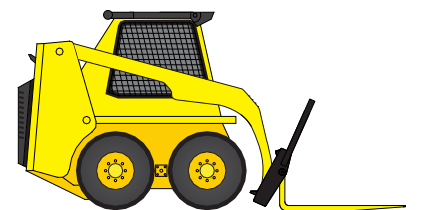
A floating tyne design offers unparalleled safety for skid steer loaders. Unlike forklifts, skid steers are able to crowd their pickup past horizontal allowing the machine to be placed in an unsafe position which could cause it to tip over. Digga's pallet fork design allows the tynes to swing freely from a single fixed point ensuring load and operator safety. Furthermore the design prevents the machine's weight to be placed on the tynes which could cause them to break.

IF YOU CARE ABOUT SAFETY THEN A FLOATING TYNE DESIGN IS THE ONLY SAFE CHOICE FOR SKID STEER LOADERS

FIXED TYNE PALLET FORKS



DIGGA PALLET FORKS



Contact your local professional dealer or contact Digga direct

THE BEST DOWNUNDER



QLD, NT

4 Octal Street,
Yatala QLD 4207
Ph: (07) 3807 3330

DIGGA NSW, ACT

1 Gallipoli St, Smeaton
Grange, NSW, 2567
Ph: (02) 4647 1400

DIGGA VIC, SA, TAS

21 - 25 Villas Road
Dandenong VIC, 3175
Ph: (03) 9706 6171

DIGGA WA

6/15 Yampi Way,
Willeton, WA, 6155
Ph: (08) 9457 1544

Email: info@digga.com Web: www.digga.com

