

A woman with voluminous, dark curly hair is shown in profile, laughing heartily. She is wearing a red polo shirt with a black collar and black sleeves. Her hands are clasped together in front of her, and she has a joyful expression with her eyes closed and mouth wide open. The background is a dark, solid color.

TONIX[®]

Shirts That Work.
Service With Heart.

Table *of* Content

Performance: *Polos & Sports Shirts*

Staff Polos	14
Sports Shirts	48

Outerwear: *Pullovers & Jackets*

Pullovers	54
Jackets	61

QUICK REFERENCE INDEX

STYLES	PG	STYLES	PG	STYLES	PG
674 Instep (Y)	69	1470 Charger	59	1740 Caliber	43
675 Instep	69	1480 Fadeaway	58	1745 Caliber (W)	43
928 Endurance	46	1490 Range	58	1750 Radiance	37
988 Starter	61	1495 Midfield	65	1755 Radiance (W)	37
1080 Resilience	62	1510 Encourager	51	1760 Rival	60
1081 Resilience (Y)	62	1520 Motivator	21	1765 Rival (W)	60
1087 Bolt (Y)	63	1525 Excellence (W)	21	1810 Venture	39
1088 Bolt	63	1530 Leader	17	1815 Venture (W)	39
1120 Warrior	47	1535 Leader	17	1820 Purpose	31
1125 Inspiration (W)	47	1545 Achiever	49	1825 Purpose (W)	31
1145 Invincible (W)	63	1555 Perservance (W)	69	1890 Range (W)	58
1155 Momentum (W)	63	1610 Spirit	18	2010 Vision	28
1220 Courage	48	1615 Spirit (W)	19	2015 Vision (W)	29
1251 Dominance (Y)	68	1620 Vanguard	26	2020 Integrity	34
1255 Rally (W)	68	1625 Vanguard (W)	27	2025 Integrity (W)	35
1280 Titan	64	1627 Vanguard (Pocket)	25	2040 Patience	52
1310 Takedown	44	1628 Vanguard (Tall)	26	2045 Patience (W)	53
1315 Ringside	44	1630 Focus	23	2070 Elevate	54
1335 Anchor	50	1635 Focus (W)	23	2075 Elevate (W)	55
1361 Conqueror (Y)	69	1710 Ascent	24	2080 Tenacity	56
1365 Conqueror (Y)	69	1715 Ascent (W)	24	2085 Tenacity (W)	56
1450 Endzone	32	1730 Division	15	2060 Intensity	57
1455 Dedication (W)	33	1735 Division (W)	15	2065 Intensity (W)	57

NEW



About Us

Shirts that work. Service with heart.

We are about delivering top quality, functional work apparel at fair prices and with great service. Our focus is in developing apparel that helps you perform at your best where your work. Whether you are prioritizing durability, comfort, mobility or other features we are ready to provide apparel that works where you work.

For any customer that we've had the privilege to serve, you know that we care about your business. We know that your name and trust is at stake with every order you make. And we take that to heart.

Vision

STYLE: 2010

PG : 29



Custom Uniform Program

Make An Impact With Your Staff Polo

If you're having difficulties finding a polo uniform that wears and works well for your special needs, our team is ready to help create options that answer your unique requirements. We are committed to developing the best polo uniform to reflect your brand and meet your most challenging demands. Please contact us for further details.



Key Features



Eco-Friendly



Smart Garments



Custom Decoration



Unique Accessories



Durable Fabrics



Color Matching



Soft Handfeel



Snag Resistant



Stain Release



Anti-Microbial



Moisture Wicking



UV Protection

Venture

STYLE: 1810

PG :38-39

Let's Start Customizing

1 Limitless Design Options

Select from our stock design or develop one that's unique to your needs

2 Hundreds Of Color Combinations

Find a color from our fabric collection or let us match your specific PMS



3 Versatile Decoration Services

Choose from a variety of decoration methods and locations ideal for your program



4 Exceptional Value

Receive a competitive quote that includes free virtual proofs, set-up, digitization and decoration

Purpose

STYLE: 1825

PG : 31

Made Better

This Polo Outperforms

Made stronger with more features and functions than your average polo, this staff shirt is working hard. Just like you.

Vanguard

STYLE: 1620

PG : 26

Strong, reinforced self-fabric collar

Underarm gusset for added durability and greater range of motion

NEW Pocket Option (Style #1627)



Key Features



Enhanced stain release function



Anti-odor, anti-snag, & anti-pilling properties



Moisture wicking performance



NEW Tall Option (Style #1628)

NEW Tall Sizing in

Black	Cool Gray	Navy	Royal

Anti-Odor
Hood Lining

Built Stronger

Wear Everywhere

Great year-round piece perfect for layering. Durable fabric and workmanship to handle a wide range of activities. Mid-weight fabric that provides comfort across seasons.

Durable Rubber Puller

Concealed Zipper Teeth

Anti-Pilling Fleece

Premium Drawstings

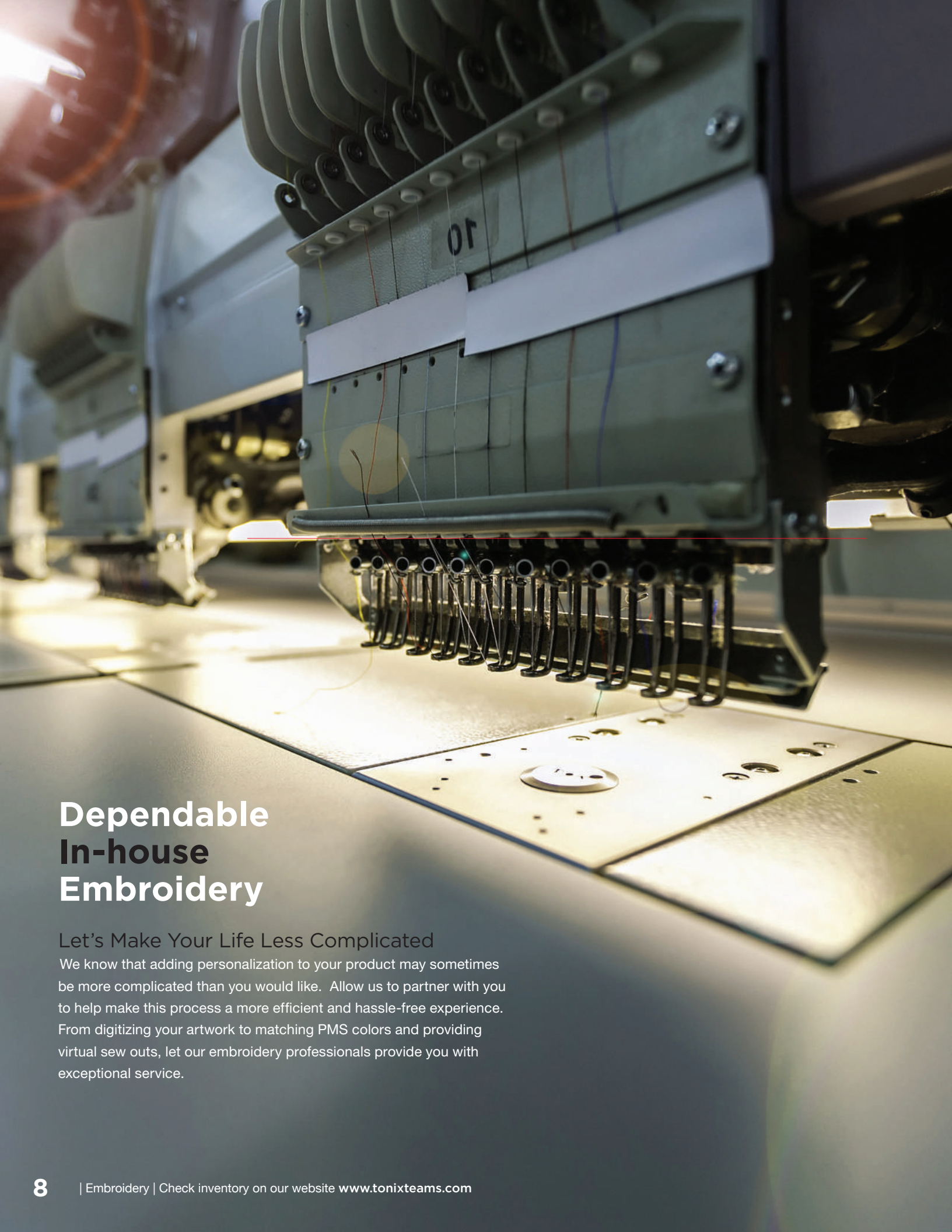
Eco-Friendly Recycled Fabric

Spacious Pouch Pockets

Elevate

STYLE: 2070

PG : 54-55



Dependable In-house Embroidery

Let's Make Your Life Less Complicated

We know that adding personalization to your product may sometimes be more complicated than you would like. Allow us to partner with you to help make this process a more efficient and hassle-free experience. From digitizing your artwork to matching PMS colors and providing virtual sew outs, let our embroidery professionals provide you with exceptional service.

Your Staff Is Our Priority

New Styles For Your Team



Tonix Uniform Gear

At Work Wherever You Work



Restaurants



Hospitality



Food Services



Security Industry



Hospitality & Healthcare



Sports & Athletics



Manufacturing



Event Staffing



Schools & Universities

Patience

STYLE: 2045

PG : 53





Vanguard Uniform Polo

Known for:

- Underarm gusset adds durability and greater range of motion
- Snag resistance and anti-microbial (odor protection treatment)
- Enhanced color fastness with stain release

*NEW Pocket & Tall Sizing Options In These Colors:



Vanguard Pocket

STYLE: 1627
 PG : 25
 MSRP : \$27.30 (P)



Vanguard Tall

STYLE: 1628
 PG : 26
 MSRP : \$25.90 (P)



Black



Cool Gray



Navy



Royal



Black Heather Vapor/Black

Black Heather Vapor/Orange

Black Heather Vapor/Royal

Black Heather Vapor/Scarlet

Vision

PG : 28-29

- Black and grey (heather) tonal fabric pattern
- Feminine V-neck crew construction on matching ladies shirt
- Exceptionally comfortable, yet durable fabric

#2010

M

MEN'S MSRP
\$29.90 (P)

MEN'S SIZES
S, M, L, XL, 2XL,
3XL, 4XL

#2015

W

WOMEN'S MSRP
\$25.90 (P)

WOMEN'S SIZES
S, M, L, XL, 2XL, 3XL



Black Mélange /Black

Graphite Mélange /Graphite

Royal Mélange /Royal

Integrity

PG : 34-35

- Striped tonal fabric (mélange) design throughout body
- Feminine V-neck with stand up collar on matching ladies shirt
- Superior snag proof fabric to look professional on the longest day

#2020

M

MEN'S MSRP
\$29.90 (P)

MEN'S SIZES
S, M, L, XL, 2XL,
3XL, 4XL

#2025

W

WOMEN'S MSRP
\$29.90 (P)

WOMEN'S SIZES
S, M, L, XL,
2XL, 3XL



Black Mélange
/Black

Graphite Mélange
/Graphite

Royal Mélange
/Royal

Patience

PG : 52-53

- Striped tonal fabric (mélange) design throughout body
- Quarter zip concealed zipper with premium rubber puller
- Superior snag proof fabric to look professional on the longest day

#2040

M

MEN'S MSRP
\$33.90 (P)

MEN'S SIZES
S, M, L, XL, 2XL,
3XL, 4XL

#2045

W

WOMEN'S MSRP
\$33.90 (P)

WOMEN'S SIZES
S, M, L, XL, 2XL, 3XL



Light Grey Marble/
Dark Grey Marble

Intensity

PG : 57

- Double-knit polyester made with eco-friendly, recycled polyester
- Half zip with concealed zipper teeth and premium zipper puller
- Side pockets for convenient storage and warmth

#2060

M

MEN'S MSRP
\$45.90 (P)

MEN'S SIZES
S, M, L, XL, 2XL,
3XL, 4XL

#2065

W

WOMEN'S MSRP
\$45.90 (P)

WOMEN'S SIZES
S, M, L, XL, 2XL



Light Grey Marble /
Dark Grey Marble

Elevate

PG : 54-55

- Double-knit polyester made with eco-friendly, recycled polyester
- Quarter zip with concealed zipper teeth and premium zipper puller
- Strong 3-piece hood with contrast black, odor control lining
- Spacious, front pouch pocket

#2070

M

MEN'S MSRP
\$51.90 (P)

MEN'S SIZES
S, M, L, XL, 2XL,
3XL, 4XL

#2075

W

WOMEN'S MSRP
\$51.90 (P)

WOMEN'S SIZES
S, M, L, XL, 2XL



Dark Grey Marble /
Light Grey Marble

Tenacity

PG : 56

- Double-knit polyester made with eco-friendly, recycled polyester
- Strong 3-piece hood with contrast black, odor control lining
- Premium, extra durable drawstring
- Side pockets for convenient storage and warmth

#2080

M

MEN'S MSRP
\$47.90 (P)

MEN'S SIZES
S, M, L, XL, 2XL,
3XL, 4XL

#2085

W

WOMEN'S MSRP
\$47.90 (P)

WOMEN'S SIZES
S, M, L, XL, 2XL



1730 & 1735 *Division*

FEATURES

- 100% polyester, performance polo shirt
- UltraKnit durable fabric, moisture wicking
- Dual-sided, snag-resistant fabric with smooth and textured surfaces
- Tagless labeling for extra comfort
- Open cuffs & durable two piece self-fabric collar
- Naturally wrinkle, fade and shrink resistant fabric
- UV protection to shield your body
- Enhanced color fastness
- Men: three-button placket
- Ladies: one button feminine placket, ladies engineered fit

SCORPION CAMO POLO

Lead The Way



1730 *Division*
MSRP \$27.90 (P)



Sizes Mens Adult:
S • M • L • XL • 2XL • 3XL/4XL*

1735 *Division*
MSRP \$27.90 (P)



Sizes Ladies Adult:
S • M • L • XL • 2XL/3XL*

4 COLORS AVAILABLE

4 COLORS AVAILABLE



Black / Scorpion Black

Forest / Scorpion Forest

Navy / Scorpion Navy

Royal / Scorpion Royal

Black / Scorpion Black

Forest / Scorpion Forest

Navy / Scorpion Navy

Royal / Scorpion Royal

STAFF POLO

SPORTS SHIRTS

PULLOVERS

JACKETS



1530 *Leader* & 1535 *Stamina*

FEATURES

- 100% polyester, performance polo shirt
- UltraKnit durable fabric, moisture wicking
- Dual-sided, snag-resistant fabric with smooth and textured surfaces
- Tagless labeling for extra comfort
- Open cuffs & durable two piece self-fabric collar
- Naturally wrinkle, fade and shrink resistant fabric
- UV protection to shield your body
- Enhanced color fastness
- Men: three-button placket
- Ladies: one button placket, ladies engineered fit
- Ideal polo for company uniform, coaching staff, team or faculty use



1530 Leader
MSRP \$27.90 (P)



Sizes Mens Adult:
S • M • L • XL • 2XL • 3XL/4XL*

1535 Stamina
MSRP \$27.90 (P)



Sizes Ladies Adult:
S • M • L • XL • 2XL/3XL*

8 COLORS AVAILABLE



Black / Dig. Black Black / Dig. Orange Black / Dig. Scarlet

8 COLORS AVAILABLE



Black / Dig. Black Black / Dig. Orange Black / Dig. Scarlet



Columbia / Dig. Columbia Navy / Dig. Navy Orange / Dig. Orange



Columbia / Dig. Columbia Navy / Dig. Navy Orange / Dig. Orange



Royal / Dig. Royal Scarlet / Dig. Scarlet



Royal / Dig. Royal Scarlet / Dig. Scarlet

*3XL/4XL is a bridge size meant for customers typically wearing 3XL or 4XL.

*2XL/3XL is a bridge size meant for customers typically wearing 2XL or 3XL.



1610 & 1615 *Spirit*

FEATURES

- 100% polyester, performance polo shirt
- UltraKnit durable fabric, moisture wicking
- Dual-sided, snag-resistant fabric with smooth and textured surfaces
- Tagless labeling for extra comfort
- Open cuffs and self-fabric collar
- Naturally wrinkle, fade and shrink resistant fabric
- UV protection to shield your body
- Enhanced color fastness
- Mesh texture on white color block fabric for breathability
- Men: three-button placket
- Ladies: three-button feminine placket, ladies engineered fit
- Ideal polo for company uniform, coaching staff, team or faculty use

1610 Spirit

MSRP \$25.90 (P)



Sizes Mens Adult: S • M • L • XL • 2XL • 3XL/4XL*

*3XL/4XL is a bridge size meant for customers typically wearing 3XL or 4XL.

10 COLORS AVAILABLE



Black / White

Cardinal / White

Forest / White

Maroon / White

Navy / White



Purple / White

Royal / White

Scarlet / White

White / Black

White / Royal

1615 Spirit (Ladies)

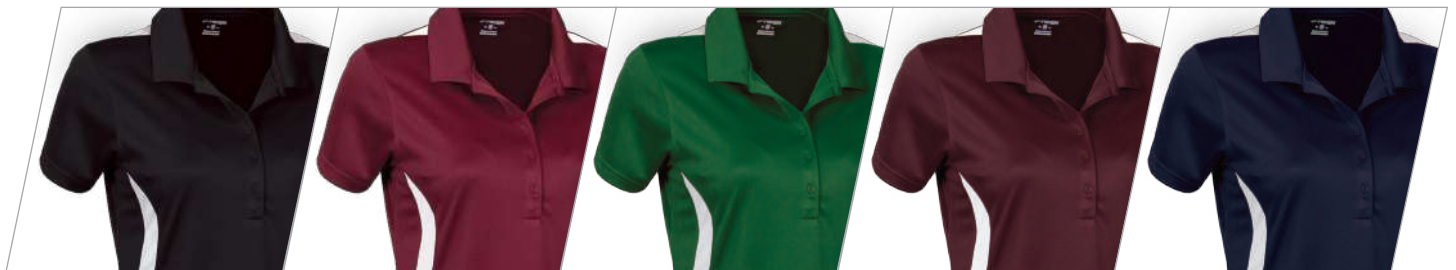
MSRP \$25.90 (P)



Sizes Ladies Adult: S • M • L • XL • 2XL/3XL*

*2XL/3XL is a bridge size meant for customers typically wearing 2XL or 3XL.

8 COLORS AVAILABLE



Black / White

Cardinal / White

Forest / White

Maroon / White

Navy / White



Purple / White

Royal / White

Scarlet / White



1520 *Motivator* & 1525 *Excellence*

FEATURES

- 100% polyester, performance polo shirt
- UltraKnit durable fabric, moisture wicking
- Dual-sided, snag-resistant fabric with smooth and textured surfaces
- Tagless labeling for extra comfort
- Open cuffs & durable two piece self-fabric collar
- Naturally wrinkle, fade and shrink resistant fabric
- UV protection to shield your body
- Enhanced color fastness
- Men: three-button placket
- Ladies: one button placket, ladies engineered fit
- Ideal polo for company uniform, coaching staff, team or faculty use

1520 *Motivator*

MSRP \$25.90 (P)



Sizes Mens Adult: S • M • L • XL • 2XL • 3XL/4XL*

*3XL/4XL is a bridge size meant for customers typically wearing 3XL or 4XL.

16 COLORS AVAILABLE



1525 *Excellence (Ladies)*

MSRP \$25.90 (P)



Sizes Ladies Adult: S • M • L • XL • 2XL/3XL*

*2XL/3XL is a bridge size meant for customers typically wearing 2XL or 3XL.

14 COLORS AVAILABLE



STAFF POLO

SPORTS SHIRTS

PULLOVERS

JACKETS



1630 *Focus* & 1635 *Focus (Ladies)*

FEATURES

- 100% polyester, performance polo shirt
- UltraKnit durable fabric, moisture wicking
- Dual-sided, snag-resistant fabric with smooth and textured surfaces
- Tagless labeling for extra comfort
- Open cuffs and self-fabric collar
- Naturally wrinkle, fade and shrink resistant fabric
- UV protection to shield your body
- Enhanced color fastness
- Twist pattern color block design
- Men: three-button placket
- Ladies: three-button feminine placket, ladies engineered fit
- Ideal polo for company uniform, coaching staff, team or faculty use



1630 Focus
MSRP \$25.90 (P)



Sizes Mens Adult:
S • M • L • XL • 2XL • 3XL/4XL*

1635 Focus
MSRP \$25.90 (P)



Sizes Ladies Adult:
S • M • L • XL • 2XL/3XL*

6 COLORS AVAILABLE



Black / Twist Black Forest / Twist Forest Navy / Twist Navy

6 COLORS AVAILABLE



Black / Twist Black Forest / Twist Forest Navy / Twist Navy



Orange / Twist Orange Royal / Twist Royal Scarlet / Twist Scarlet



Orange / Twist Orange Royal / Twist Royal Scarlet / Twist Scarlet

*3XL/4XL is a bridge size meant for customers typically wearing 3XL or 4XL.

*2XL/3XL is a bridge size meant for customers typically wearing 2XL or 3XL.



1710 *Ascent*
MSRP \$29.90 (P)



Sizes Mens Adult:
S • M • L • XL • 2XL • 3XL/4XL*

1715 *Ascent*
MSRP \$29.90 (P)



Sizes Ladies Adult:
S • M • L • XL • 2XL/3XL*

9 COLORS AVAILABLE



Black / White Black / Grey Black / Scarlet Grey / White Navy / Scarlet



Navy / White Royal / Black Royal / White Scarlet / White

*3XL/4XL is a bridge size meant for customers typically wearing 3XL or 4XL.

9 COLORS AVAILABLE



Black / White Black / Grey Black / Scarlet Grey / White Navy / Scarlet



Navy / White Royal / Black Royal / White Scarlet / White

*2XL/3XL is a bridge size meant for customers typically wearing 2XL or 3XL.

1710 & 1715 *Ascent*

FEATURES

- 100% polyester, double knit pique
- Tagless labeling for extra comfort
- Open cuffs and reinforced, professional self-fabric collar
- Embroidery friendly pique fabric minimizes puckering
- UV protection to shield your body (UPF 50+)
- Snag and shrink resistant durable pique knit
- Anti-microbial (odor protection) treatment
- Enhanced color fastness with stain release
- Men: three-button placket
- Ladies: three-button feminine placket, ladies engineered fit



1627 Vanguard (Pocket)

MSRP \$27.30 (P)

Sizes Mens Adult: S • M • L • XL • 2XL • 3XL • 4XL

4 COLORS AVAILABLE



Black

Cool Grey



Navy

Royal

Features

- 100% polyester, double knit pique polo shirt
- Left chest pocket with stylish, reinforced stitching design
- Tagless labeling for extra comfort
- Open cuffs and reinforced, professional self-fabric collar
- Embroidery friendly pique fabric minimizes puckering
- Underarm gusset adds durability and greater range of motion
- UV protection to shield your body (UPF 50+)
- Wrinkle free properties and snag resistance
- Anti-microbial (odor protection) treatment
- Enhanced color fastness with stain release
- Three-button placket
- Ideal polo for company uniform, coaching staff, team or faculty use



1620 *Vanguard (Stain-Release Polo)*

1628 *Vanguard (Tall)*

MSRP \$23.30 (P)

MSRP \$25.30 (P)



Sizes Mens Adult: S • M • L • XL • 2XL • 3XL/4XL*

*3XL/4XL is a bridge size meant for customers typically wearing 3XL or 4XL.

Tall Sizing Available In Highlight Colors – LT, XLT, 2XLT, 3XLT, 4XLT

12 COLORS AVAILABLE



Black

Cool Grey

Dark Navy

Forest



Light Blue

Maroon

Orange

Purple



Royal

Scarlet

Vegas Gold

White

FEATURES

- 100% polyester, double knit pique polo shirt
- Tagless labeling for extra comfort
- Open cuffs and reinforced, professional self-fabric collar
- Embroidery friendly pique fabric minimizes puckering
- Underarm gusset adds durability and greater range of motion
- UV protection to shield your body (UPF 50+)
- Wrinkle free properties and snag resistance
- Anti-microbial (odor protection) treatment
- Enhanced color fastness with stain release
- Men: three-button placket
- Ladies: three-button feminine placket, ladies engineered fit
- Ideal polo for company uniform, coaching staff, team or faculty use

1625 Vanguard (Ladies Stain-Release Polo)

MSRP \$23.30 (P)



Sizes Ladies Adult: XS • S • M • L • XL • 2XL/3XL*

*2XL/3XL is a bridge size meant for customers typically wearing 2XL or 3XL.

12 COLORS AVAILABLE



Black

Cool Grey

Dark Navy

Forest



Light Blue

Maroon

Orange

Purple



Royal

Scarlet

Vegas Gold

White

FEATURES

- 100% polyester, double knit pique polo shirt
- Tagless labeling for extra comfort
- Open cuffs and reinforced, professional self-fabric collar
- Embroidery friendly pique fabric minimizes puckering
- Underarm gusset adds durability and greater range of motion
- UV protection to shield your body (UPF 50+)
- Wrinkle free properties and snag resistance
- Anti-microbial (odor protection) treatment
- Enhanced color fastness with stain release
- Men: three-button placket
- Ladies: three-button feminine placket, ladies engineered fit
- Ideal polo for company uniform, coaching staff, team or faculty use



2010 & 2015 *Vision*

FEATURES

- 5-ounce, 100% polyester
- New generation LuxKnit performance fabric, moisture wicking
- Heather Vapor pattern fabric design
- Premium snag proof fabric with soft hand feel
- Tagless labeling for extra comfort
- Naturally wrinkle, fade and shrink resistant fabric
- Self fabric, exceptionally durable professional collar
- UV protection to shield your body (UPF 50+)
- Enhanced color fastness
- Men: three-button placket
- Ladies: feminine v-neck crew, ladies engineered fit



2010 Vision

MSRP \$29.90 (P)



Sizes Mens Adult:
S • M • L • XL • 2XL • 3XL • 4XL

2015 Vision

MSRP \$25.90 (P)



Sizes Ladies Adult:
S • M • L • XL • 2XL • 3XL

4 COLORS AVAILABLE



Black Heather Vapor/Black Black Heather Vapor/Orange

4 COLORS AVAILABLE



Black Heather Vapor/Black Black Heather Vapor/Orange



Black Heather Vapor/Royal Black Heather Vapor/Scarlet



Black Heather Vapor/Royal Black Heather Vapor/Scarlet



1820 & 1825 *Purpose*

FEATURES

- 5-ounce, 100% polyester
- New generation LuxKnit performance fabric, moisture wicking
- Tiger Stripe (i.e., black stripe) pattern throughout shirt body
- Premium snag proof fabric with soft hand feel
- Tagless labeling for extra comfort
- Naturally wrinkle, fade and shrink resistant fabric
- Self fabric, exceptionally durable professional collar
- UV protection to shield your body (UPF 50+)
- Enhanced color fastness
- Anti-microbial properties on contrast fabric for odor control
- Men: three-button placket
- Ladies: five-button feminine placket, ladies engineered fit



1820 Purpose
MSRP \$29.90 (P)



Sizes Mens Adult:
S • M • L • XL • 2XL • 3XL • 4XL

1825 Purpose
MSRP \$29.90 (P)



Sizes Ladies Adult:
S • M • L • XL • 2XL • 3XL

4 COLORS AVAILABLE



Black/Grey/Black Stripe Black/Orange Black Stripe

4 COLORS AVAILABLE



Black/Grey/Black Stripe Black/Orange Black Stripe



Black/Royal Black Stripe Black/Scarlet Black Stripe



Black/Royal Black Stripe Black/Scarlet Black Stripe



1450 *Endzone* & 1455 *Dedication (Ladies)*

FEATURES

- 100% polyester, performance polo shirt
- New generation LuxKnit performance fabric, moisture wicking
- Premium snag proof fabric with soft hand feel
- Tagless labeling for extra comfort
- Naturally wrinkle, fade and shrink resistant fabric
- UV protection to shield your body (UPF 50+)
- Enhanced color fastness
- Anti-microbial properties for odor control
- Men: three-button placket, premium rib knit collar
- Ladies: one button placket, ladies engineered fit, self-fabric collar
- Ideal polo for company uniform, coaching staff, team or faculty use



1450 *Endzone*

MSRP \$33.90 (P)



Sizes Mens Adult:
S • M • L • XL • 2XL • 3XL/4XL*

1455 *Dedication*

MSRP \$33.90 (P)



Sizes Ladies Adult:
S • M • L • XL • 2XL/3XL*

10 COLORS AVAILABLE



Black / Gold Black / Orange Black / Scarlet



Maroon / Graphite Navy / Gold Navy / Orange



Royal / Gold Royal / Graphite Royal / Orange



Scarlet / Graphite

9 COLORS AVAILABLE



Black / Gold Black / Orange Black / Scarlet



Maroon / Graphite Navy / Gold Navy / Orange



Royal / Graphite Royal / Orange Scarlet / Graphite

*3XL/4XL is a bridge size meant for customers typically wearing 3XL or 4XL.

*2XL/3XL is a bridge size meant for customers typically wearing 2XL or 3XL.



2020 & 2025 *Integrity*

FEATURES

- 5-ounce, 100% polyester
- New generation LuxKnit performance fabric, moisture wicking
- Striped tonal fabric design throughout body
- Premium snag proof fabric with soft hand feel
- Tagless labeling for extra comfort
- Naturally wrinkle, fade and shrink resistant fabric
- Self fabric, exceptionally durable professional collar
- UV protection to shield your body (UPF 50+)
- Enhanced color fastness
- Men: three-button placket
- Ladies: V-neck with stand up collar, ladies engineered fit

2020 Integrity

MSRP \$29.90 (P)



Sizes Mens Adult:
S • M • L • XL • 2XL • 3XL • 4XL

2025 Integrity

MSRP \$29.90 (P)



Sizes Ladies Adult:
S • M • L • XL • 2XL • 3XL

3 COLORS AVAILABLE



Black Melange/Black

Grey Melange/Grey

3 COLORS AVAILABLE



Black Melange/Black

Grey Melange/Grey



Royal Melange/Royal



Royal Melange/Royal



1750 *Radiance* & 1755 *Radiance (Ladies)*

FEATURES

- 100% polyester, performance polo shirt
- New generation LuxKnit performance fabric, moisture wicking
- Premium snag proof fabric with soft hand feel
- Tagless labeling for extra comfort
- Naturally wrinkle, fade and shrink resistant fabric
- Durable two piece self-fabric collar
- UV protection to shield your body (UPF 50+)
- Enhanced color fastness
- Men: three-button placket
- Ladies: five-button feminine placket, ladies engineered fit

1750 *Radiance*
MSRP \$29.90 (P)



Sizes Mens Adult:
S • M • L • XL • 2XL • 3XL/4XL*

1755 *Radiance*
MSRP \$29.90 (P)



Sizes Ladies Adult:
S • M • L • XL • 2XL/3XL*

4 COLORS AVAILABLE



Black / Graphite

Navy / Graphite



Royal / Graphite

Scarlet / Graphite

*3XL/4XL is a bridge size meant for customers typically wearing 3XL or 4XL.

4 COLORS AVAILABLE



Black / Graphite

Navy / Graphite



Royal / Graphite

Scarlet / Graphite

*2XL/3XL is a bridge size meant for customers typically wearing 2XL or 3XL.



1810 & 1815 *Venture*

FEATURES

- 5-ounce, 100% polyester
- New generation LuxKnit performance fabric, moisture wicking
- Contrast Heather stripe pattern on side panel of shirt
- Premium snag proof fabric with soft hand feel
- Tagless labeling for extra comfort
- Naturally wrinkle, fade and shrink resistant fabric
- Self fabric, exceptionally durable professional collar
- UV protection to shield your body (UPF 50+)
- Anti-microbial properties on solid contrast fabric for odor control
- Enhanced color fastness
- Men: three-button placket
- Ladies: feminine v-neck design, ladies engineered fit



1810 *Venture*

MSRP \$29.90 (P)



Sizes Mens Adult:
S • M • L • XL • 2XL • 3XL • 4XL

1815 *Venture*

MSRP \$29.90 (P)



Sizes Ladies Adult:
S • M • L • XL • 2XL • 3XL

7 COLORS AVAILABLE



Black / Ath.
Gold & Black
Contrast Heather

Black / Lt. Black
& Black Contrast
Heather

Black / Scarlet
& Black Contrast
Heather

7 COLORS AVAILABLE



Black / Ath.
Gold & Black
Contrast Heather

Black / Lt. Black
& Black Contrast
Heather

Black / Scarlet
& Black Contrast
Heather



Gold / Lt. Black
& Black Contrast
Heather

Navy / Ath.
Gold & Navy
Contrast Heather

Navy / Scarlet
& Navy Contrast
Heather



Gold / Lt. Black
& Black Contrast
Heather

Navy / Ath.
Gold & Navy
Contrast Heather

Navy / Scarlet
& Navy Contrast
Heather



Royal / Lt. Black
& Black Contrast
Heather



Royal / Lt. Black
& Black Contrast
Heather



1830 & 1835 *Triumph*

FEATURES

- 5-ounce, 100% polyester
- New generation LuxKnit performance fabric, moisture wicking
- Heather Vapor pattern on lower portion of shirt
- Premium snag proof fabric with soft hand feel
- Tagless labeling for extra comfort
- Naturally wrinkle, fade and shrink resistant fabric
- Self fabric, exceptionally durable professional collar
- UV protection to shield your body (UPF 50+)
- Enhanced color fastness
- Anti-microbial properties on solid contrast fabric for odor control
- Men: three-button placket
- Ladies: feminine v-neck design, ladies engineered fit



1830 *Triumph*
MSRP \$29.90 (P)



Sizes Mens Adult:
S • M • L • XL • 2XL • 3XL • 4XL

1835 *Triumph*
MSRP \$29.90 (P)



Sizes Ladies Adult:
S • M • L • XL • 2XL • 3XL

4 COLORS AVAILABLE



Black/Black
Heather Vapor

Navy/Navy
Heather Vapor

4 COLORS AVAILABLE



Black/Black
Heather Vapor

Navy/Navy
Heather Vapor



Royal/Royal
Heather Vapor

Scarlet/Scarlet
Heather Vapor



Royal/Royal
Heather Vapor

Scarlet/Scarlet
Heather Vapor

Stronger And Softer

Repels snags. Ultra comfortable.



1740 & 1745 *Caliber*

FEATURES

- 100% polyester, performance polo shirt
- New generation LuxKnit performance fabric, moisture wicking
- Premium snag proof fabric with soft hand feel
- Tagless labeling for extra comfort
- Naturally wrinkle, fade and shrink resistant fabric
- Durable two piece self-fabric collar
- UV protection to shield your body (UPF 50+)
- Enhanced color fastness
- Men: three-button placket
- Ladies: five-button feminine placket, ladies engineered fit



1740 *Caliber*

MSRP \$21.90 (P)



Sizes Mens Adult:
S • M • L • XL • 2XL • 3XL/4XL*

1745 *Caliber*

MSRP \$21.90 (P)



Sizes Ladies Adult:
S • M • L • XL • 2XL/3XL*

4 COLORS AVAILABLE



Black

Graphite

4 COLORS AVAILABLE



Black

Graphite



Navy

Royal



Navy

Royal

*3XL/4XL is a bridge size meant for customers typically wearing 3XL or 4XL.

*2XL/3XL is a bridge size meant for customers typically wearing 2XL or 3XL.



1310 Takedown
MSRP \$29.90 (P)



Sizes Mens Adult:
S • M • L • XL • 2XL • 3XL • 4XL/5XL*

1315 Ringside
MSRP \$29.90 (P)



Sizes Ladies Adult:
XS • S • M • L • XL • 2XL/3XL*

7 COLORS AVAILABLE



Black / Scarlet Graphite / Black Graphite / Forest



Graphite / Navy Graphite / Purple Graphite / Royal



Graphite / White

7 COLORS AVAILABLE



Black / Scarlet Graphite / Black Graphite / Forest



Graphite / Navy Graphite / Purple Graphite / Royal



Graphite / White

*4XL/5XL is a bridge size meant for customers typically wearing 4XL or 5XL.

*2XL/3XL is a bridge size meant for customers typically wearing 2XL or 3XL.



1310 *Takedown* & 1315 *Ringside*

FEATURES

- 100% polyester, performance polo shirt
- MicroMesh performance fabric, moisture wicking properties
- Ultra soft fabric with exceptional breathability
- Tagless labeling for extra comfort
- Open cuffs and premium ribbed collar
- UV protection to shield your body
- Enhanced color fastness
- Naturally wrinkle, fade and shrink resistant fabric
- Men: three-button placket
- Ladies: single button placket, ladies engineered fit, knit collar
- Ideal polo for company uniform, coaching staff, team or faculty use

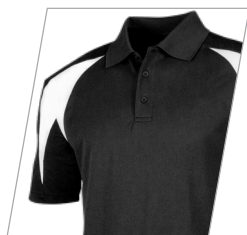


928 *Endurance*
MSRP \$29.90 (P)



Sizes Mens Adult:
S • M • L • XL • 2XL • 3XL • 4XL

8 COLORS AVAILABLE



Black / White



Kelly / White



Orange / White



Royal / White



Scarlet / White



White / Black



White / Navy



White / Royal

928 *Endurance*

FEATURES

- 100% polyester, performance polo shirt
- Birds-eye performance fabric, moisture wicking
- Snag resistant fibers and reinforced double needle stitching for superior durability
- UV protection to shield your body
- Enhanced color fastness
- Tagless labeling for extra comfort
- Dual texture body and sleeve providing stylish design
- Three-button placket, premium ribbed collar
- Ideal polo for company uniform, coaching staff, team or faculty use



1120 *Warrior*
MSRP \$19.90 (P)



Sizes Mens Adult:
S • M • L • XL • 2XL • 3XL • 4XL/5XL*

1125 *Inspiration*
MSRP \$19.90 (P)



Sizes Ladies Adult:
XS • S • M • L • XL • 2XL/3XL*

6 COLORS AVAILABLE



Black / White Maroon / White Navy / White Purple / White



Scarlet / White Vegas Gold / White

*4XL/5XL is a bridge size meant for customers typically wearing 4XL or 5XL.

6 COLORS AVAILABLE



Black / White Maroon / White Navy / White Purple / White



Scarlet / White Vegas Gold / White

*2XL/3XL is a bridge size meant for customers typically wearing 2XL or 3XL.

1120 *Warrior* & 1125 *Inspiration*

FEATURES

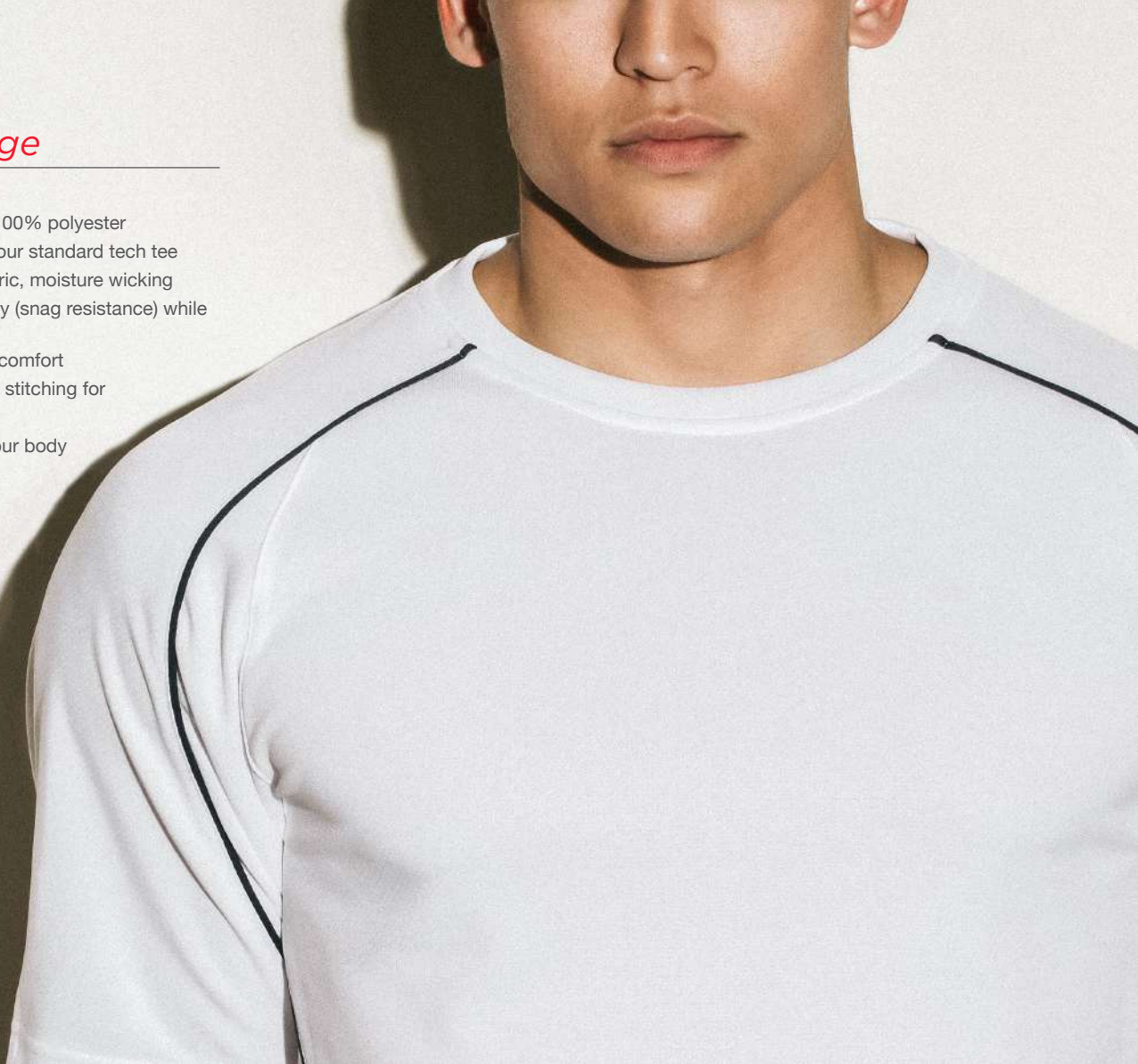
- 100% polyester, performance polo shirt
- Pebbled performance fabric, moisture wicking
- Sturdy knit offers durability (snag resistance) while providing a soft hand feel
- Tagless labeling for extra comfort
- Naturally wrinkle, fade and shrink resistant fabric

- UV protection to shield your body
- Enhanced color fastness
- Men: three-button placket, premium ribbed collar
- Ladies: single button placket, self-fabric collar, ladies engineered fit
- Ideal polo for company uniform, coaching staff, team or faculty use

1220 *Courage*

FEATURES

- Premium warm-up shirt, 100% polyester
- More robust fabric than your standard tech tee
- Pebbled performance fabric, moisture wicking
- Sturdy knit offers durability (snag resistance) while providing a soft hand feel
- Tagless labeling for extra comfort
- Reinforced double needle stitching for maximum durability
- UV protection to shield your body
- Enhanced color fastness



1220 *Courage*

MSRP \$11.90 (P)



Sizes Mens Adult: S • M • L • XL • 2XL • 3XL • 4XL/5XL*

* 4XL/5XL is a bridge size meant for customers typically wearing 4XL or 5XL.

13 COLORS AVAILABLE



Black / Scarlet

Black / White

Maroon / White

Forest / White

Navy / White

Purple / White

Royal / White



Vegas / White

White / Black

White / Navy

White / Royal

White / Scarlet

White / Dark Maroon

1545 *Achiever*

MSRP \$11.90 (P)



Sizes Mens Adult: S • M • L • XL • 2XL • 3XL/4XL*

7 COLORS AVAILABLE



Black / Graphite

Columbia / Graphite

Graphite / White

Navy / Graphite

Orange / Graphite

Royal / Graphite

Scarlet / Graphite

Features

- Premium warm-up shirt, 100% polyester
- More robust fabric than your standard tech tee
- UltraKnit durable fabric, moisture wicking
- Dual-sided, snag-resistant fabric with smooth and textured surfaces
- Tagless labeling for extra comfort
- Naturally wrinkle, fade and shrink resistant fabric
- UV protection to shield your body
- Enhanced color fastness

*3XL/4XL is a bridge size meant for customers typically wearing 3XL or 4XL.

1335 *Anchor*

FEATURES

- Premium warm-up shirt, 100% polyester
- More robust fabric than your standard tech tee
- MicroMesh performance fabric, moisture wicking properties
- Ultra soft fabric with exceptional breathability
- Tagless labeling for extra comfort
- UV protection to shield your body
- Enhanced color fastness
- Naturally wrinkle, fade and shrink resistant fabric



1335 *Anchor*

MSRP \$11.90 (P)



Sizes Mens Adult: S • M • L • XL • 2XL • 3XL • 4XL/5XL*

* 4XL/5XL is a bridge size meant for customers typically wearing 4XL or 5XL.

8 COLORS AVAILABLE



Black / Scarlet

Graphite / Black

Graphite / Maroon

Graphite / Navy

Graphite / Purple

Graphite / Royal

Graphite / Scarlet

Graphite / White

1510 *Encourager*



MSRP \$29.90 (P)

Sizes Mens Adult: S • M • L • XL • 2XL • 3XL/4XL*

5 COLORS AVAILABLE



Black / Graphite

Graphite / Black



Navy / Graphite

Royal / Graphite



Scarlet / Graphite

Features

- 100% polyester, performance long sleeve
- Quarter zip placket
- New generation LuxKnit performance fabric, moisture wicking
- Premium snag resistant fabric with soft hand feel
- Tagless labeling for extra comfort
- Naturally wrinkle resistant polyester fabric
- UV protection to shield your body
- Enhanced color fastness
- UV protection to shield your body (UPF 50+)

* 3XL/4XL is a bridge size meant for customers typically wearing 3XL or 4XL.

STAFF POLO

SPORTS SHIRTS

PULLOVERS

JACKETS

BIG
4XL



2040 *Patience*

MSRP \$33.90 (P)

Sizes Mens Adult: S • M • L • XL • 2XL • 3XL • 4XL

3 COLORS AVAILABLE



Black Melange / Black



Graphite Melange / Graphite



Royal Melange / Royal

Features

- 5-ounce, 100% polyester
- New generation LuxKnit performance fabric, moisture wicking
- Striped tonal fabric design throughout body
- Premium snag proof fabric with soft hand feel
- Tagless labeling for extra comfort
- Naturally wrinkle resistant polyester fabric
- Self fabric, exceptionally durable professional collar
- UV protection to shield your body (UPF 50+)
- Enhanced color fastness
- Quarter zip placket with premium rubber puller



2045 *Patience*

MSRP \$33.90 (P)

Sizes Ladies Adult: S • M • L • XL • 2XL • 3XL

3 COLORS AVAILABLE



Black Melange / Black



Graphite Melange / Graphite



Royal Melange / Royal

Features

- 5-ounce, 100% polyester
- New generation LuxKnit performance fabric, moisture wicking
- Striped tonal fabric design throughout body
- Premium snag proof fabric with soft hand feel
- Tagless labeling for extra comfort
- Naturally wrinkle resistant polyester fabric
- Self fabric, exceptionally durable professional collar
- UV protection to shield your body (UPF 50+)
- Enhanced color fastness
- Quarter zip placket with premium rubber puller



STAFF POLO

SPORTS SHIRTS

PULLOVERS

JACKETS



**Anti-Odor
Hood Lining**

Premium Drawstings

Eco-Friendly Recycled Fabric

Spacious Pouch Pockets



ECO-FRIENDLY FLEECE



BIG
4XL



2070 *Elevate*

MSRP \$51.90 (P)

Sizes Mens Adult:
S • M • L • XL • 2XL • 3XL • 4XL

2075 *Elevate*

MSRP \$51.90 (P)

Sizes Ladies Adult:
S • M • L • XL • 2XL

AVAILABLE IN GREY /DARK GREY MARBLE

Features

- 100% ComfortTek double-knit polyester with eco-friendly, recycled polyester content
- Quarter zip with hidden zipper teeth and black premium puller
- Three piece hood for better fit (stylish contrast color blocking on interior border of hood)
- Contrast black color, anti-microbial hood lining
- Mélange fabric with tonal contrast color blocking
- Soft brushed interior for comfort and warmth
- Spacious pouch pocket
- Banded bottom hem for enhanced fit and warmth
- Naturally wrinkle resistant polyester with mechanical stretch
- Heat sealed back neck tag for added comfort

STAFF POLO

SPORTS SHIRTS

PULLOVERS

JACKETS



2080 / 2085



Tenacity

MSRP \$47.90 (P)

Features

- 100% ComfortTek double-knit polyester with eco-friendly, recycled polyester content
- Three piece hood for better fit
- Contrast black color, anti-microbial hood lining
- Mélange fabric with tonal contrast color blocking
- Soft brushed interior for comfort and warmth
- **Hidden side pockets**
- Naturally wrinkle resistant polyester with mechanical stretch
- Heat sealed back neck tag for added comfort



ECO-FRIENDLY FLEECE



2080 Tenacity

Sizes Mens Adult:
S • M • L • XL • 2XL • 3XL • 4XL



2085 Tenacity

Sizes Ladies Adult:
S • M • L • XL • 2XL

AVAILABLE IN GREY /DARK GREY MARBLE



ECO-FRIENDLY FLEECE



BIG
4XL



2060 *Intensity*

MSRP \$45.90 (P)

Sizes Mens Adult:
S • M • L • XL • 2XL • 3XL • 4XL



2065 *Intensity*

MSRP \$45.90 (P)

Sizes Ladies Adult:
S • M • L • XL • 2XL

AVAILABLE IN GREY /DARK GREY MARBLE

Features

- 100% ComfortTek double-knit polyester with eco-friendly, recycled polyester content
- Half zip with hidden zipper teeth and black premium puller
- Mélange fabric with tonal contrast color blocking
- Soft brushed interior for comfort and warmth
- Hidden side pockets
- Banded bottom hem for enhanced fit and warmth
- Naturally wrinkle resistant polyester with mechanical stretch
- Heat sealed back neck tag for added comfort

1480 *Fadeaway*

MSRP \$31.90 (P)



Sizes Mens Adult: XS • S • M • L • XL • 2XL • 3XL/4XL*

* 3XL/4XL is a bridge size meant for customers typically wearing 3XL or 4XL.
Note: The Navy shade for select shirts is darker than our traditional shade of Navy.

5 COLORS AVAILABLE



Black / Graphite

Forest / Graphite

Maroon / Graphite

Navy / Graphite

White / Graphite

Features

- 100% ComfortTek double-knit polyester, moisture wicking performance fleece
- Three piece hood for better fit
- Premium matte appearance with soft brushed interior
- Unique, expanded pouch pocket
- Banded bottom hem for enhanced fit and warmth
- Naturally wrinkle, fade and shrink resistant fabric
- Locker loop with heat sealed tag for comfort

^{MEN} 1490 *Range* / ^{LADIES} 1890 *Range*

MSRP \$30.90 (P)

Sizes Mens Adult: XS • S • M • L • XL • 2XL • 3XL • 4XL

Sizes Ladies Adult: S • M • L • XL • 2XL • 3XL

3 COLORS AVAILABLE

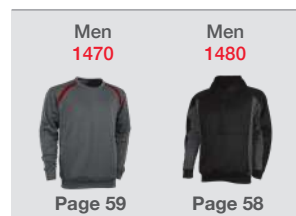


Black

*Graphite

Navy

MATCH



Page 59

Page 58

Features

- 100% ComfortTek double-knit polyester, moisture wicking performance fleece
- Premium matte appearance with soft brushed interior
- Two side pockets
- Adjustable drawstring, elastic waist
- Naturally wrinkle, fade and shrink resistant fabric
- 12" zippered leg closure open bottom hem

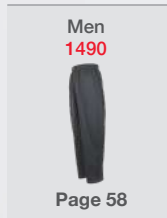
*Graphite is available only in men's size

1470 *Charger*

Features

- 100% ComfortTek double-knit polyester, moisture wicking performance fleece
- Premium matte appearance with soft brushed interior
- Unique, side seam pockets
- Banded bottom hem for enhanced fit and warmth
- Reinforced double needle stitching for maximum durability
- Locker loop with heat sealed tag for comfort

MATCH



STAFF POLO

SPORTS SHIRTS

PULLOVERS

JACKETS

1470 *Charger*

MSRP \$29.90 (P)



Sizes Mens Adult: XS • S • M • L • XL • 2XL • 3XL/4XL*

* 3XL/4XL is a bridge size meant for customers typically wearing 3XL or 4XL.

5 COLORS AVAILABLE



Graphite / Black

Graphite / Navy

Graphite / Royal

Graphite / Scarlet

Graphite / White



1760 *Rival*



MSRP \$55.90 (P)

Sizes Mens Adult: S • M • L • XL • 2XL • 3XL/4XL

* 3XL/4XL is a bridge size meant for customers typically wearing 3XL or 4XL.

1765 *Rival*



MSRP \$55.90 (P)

Sizes Ladies Adult: S • M • L • XL • 2XL/3XL

* 2XL/3XL is a bridge size meant for customers typically wearing 2XL or 3XL.

3 COLORS AVAILABLE



Black / Carbon

Navy / Carbon

Royal / Carbon

3 COLORS AVAILABLE



Black / Carbon

Navy / Carbon

Royal / Carbon

Features

- 100% Premium Bonded Twist fleece body
- Contrast, stylish woven polyester side panel design
- Anti-pilling, brushed fleece interior for superior comfort and warmth
- Two zippered side pockets with rubber puller
- Athletic fit with set-in sleeves
- Open cuffs and bottom hem

988 *Starter*

MSRP \$87.90 (P)

BIG
4XL

Sizes Mens Adult: S • M • L • XL • 2XL • 3XL • 4XL

5 COLORS AVAILABLE



Black / Black

Black / Scarlet

Navy / Navy



Navy / Scarlet

Scarlet / Scarlet

Features

- Premium SoftShell fabric comprised of 88% polyester / 12% spandex (offers advanced motion flexibility) bonded to 100% micro-polar fleece
- Extremely robust, mid-weight jacket for high warmth
- Hidden storm flap for added protection
- Water and wind resistant
- Two side pockets
- Naturally wrinkle, fade and shrink resistant fabric
- Rib trim cuffs, collar, and bottom hem for a flexible fit that locks in warmth

STAFF POLO

SPORTS SHIRTS

PULLOVERS

JACKETS



1080/1081 YOUTH *Resilience*

MSRP \$39.90 (P)
 YOUTH \$38.90 (P)



Sizes Mens Adult: S • M • L • XL • 2XL • 3XL • 4XL/5XL*
 Sizes Youth: JS • JM • JL

* 4XL/5XL is a bridge size meant for customers typically wearing 4XL or 5XL.

† Colors available in youth.

6 COLORS AVAILABLE



Black / White †



Forest / White †



Kelly / White



Navy / White †



Royal / White †



Scarlet / White †

1145 *Invincible* (Ladies)

MSRP \$39.90 (P)



Sizes Ladies Adult: XS • S • M • L • XL • 2XL/3XL*

* 2XL/3XL is a bridge size meant for customers typically wearing 2XL or 3XL.

Note: Youth refer to Style #1081

6 COLORS AVAILABLE



Black / White

Grey / White

Maroon / White

Navy / White

Royal / White

Scarlet / White

Features

- 100% premium Poly-Micro shell warm-up jacket
- Ultra-soft, noiseless fabric offers you superior comfort
- Breathable, mesh-lined body and taffeta lined sleeves provides motion flexibility
- Water and wind resistant
- Naturally wrinkle, fade and shrink resistant fabric
- Two side zippered pockets with rubber puller
- Open bottom waist with hidden adjustable drawstring and cord locks
- Locker loop with heat sealed tag for comfort
- 1145 (ladies): ladies engineered fit, matches pants Style #1155 (PG 63)
- 1080 (men): matches pants Style #1088 (PG 63)



MEN ^{YOUTH} 1088/1087 Bolt / ^{LADIES} 1155 Momentum

MEN MSRP \$37.90 (P)

YOUTH \$35.90 (P)

LADIES \$37.90 (P)



Sizes Mens Adult: S • M • L • XL • 2XL • 3XL • 4XL/5XL*
 Sizes Youth: JS • JM • JL

Sizes Ladies Adult: XS • S • M • L • XL • 2XL

- 100% premium Poly-Micro shell
- Ultra-soft, noiseless fabric offers you superior comfort
- Breathable, mesh-lined upper leg and taffeta-lined lower leg provides motion flexibility
- Water and wind resistant
- Adjustable drawstring, elastic waist
- Naturally wrinkle, fade and shrink resistant fabric
- Two side pockets
- Open bottom with 12" zippered leg closure

- Great match with Style #1170 (PG 72), #1280 (PG 55), #1080 (PG 62)

9 COLORS AVAILABLE



Black† Forest† Grey Kelly Navy† Purple† Royal† Scarlet†

Style #1087 Youth Pants: JS • JM • JL are available in Blue color shown above
 **Grey is available only in ladies sizes.

† Colors available in youth.

* 4XL/5XL is a bridge size meant for customers typically wearing 4XL or 5XL.



1280 *Titan*

MSRP \$29.90 (P)



Sizes Mens Adult: S • M • L • XL • 2XL • 3XL • 4XL/5XL*

9 COLORS AVAILABLE



Black / White Maroon / White Forest / White Navy / White Purple / White Royal / Black Royal / White Scarlet / Black Scarlet / White

Features

- 100% premium Poly-Micro shell warm-up jacket
- Quarter zip with black rubber puller
- Ultra-soft, noiseless fabric offers you superior comfort
- Breathable, graphite mesh-lined body and taffeta lined sleeves
- Water and wind resistant
- Naturally wrinkle, fade and shrink resistant fabric
- Two side seam, zippered pockets
- Open bottom waist with hidden adjustable drawstring and cord locks
- Locker loop with heat sealed tag for comfort

* 4XL/5XL is a bridge size meant for customers typically wearing 4XL or 5XL.



Back

STAFF POLO

SPORTS SHIRTS

PULLOVERS

JACKETS

1495 *Midfield*

MSRP \$38.90 (P)

Sizes Mens Adult: S • M • L • XL • 2XL

5 COLORS AVAILABLE



Forest / Graphite

Graphite / White

Navy / Graphite

Royal / Graphite

Scarlet / Graphite

Features

- Polyester shell with dual-sided herringbone design pattern
- 100% polyester graphite mesh lined body and taffeta lined sleeves for easy on and off
- Premium MicroTek fabric designed for adverse weather conditions water and wind resistant with minimal noise
- Naturally wrinkle, fade and shrink resistant fabric
- Adjustable, elastic cuffs to lock in warmth
- Open back vent for exceptional breathability
- Extended back drop tail with hidden adjustable cord lock
- Two side zippered pockets
- Locker loop with heat sealed tag for comfort



1885 *Adventure* (Ladies)

Features

- 100% ComfortTek double-knit polyester, moisture wicking performance tech fleece
- Premium matte appearance with soft brushed interior
- Two side zippered pockets
- Durable pilling resistant fabric that improves fabric wear
- Athletic, tapered body for enhanced mobility
- Partially elasticized sleeve cuff for improved fit and warmth
- Premium tonal heather stripe pattern from shoulder to sleeve cuff
- **Matching pants shown on PG 58, Style #1490 & #1890**

1880 *Adventure*

MSRP \$40.90 (P)



Sizes Mens Adult:
S • M • L • XL • 2XL • 3XL • 4XL

1885 *Adventure*

MSRP \$40.90 (P)



Sizes Ladies Adult:
S • M • L • XL • 2XL • 3XL

6 COLORS AVAILABLE



Black / Black Tonal Heather Black / Gold Tonal Heather Black / Scarlet Tonal Heather

6 COLORS AVAILABLE



Black / Black Tonal Heather Black / Gold Tonal Heather Black / Scarlet Tonal Heather



Navy / Gold Tonal Heather Navy / Scarlet Tonal Heather Royal / Black Tonal Heather



Navy / Gold Tonal Heather Navy / Scarlet Tonal Heather Royal / Black Tonal Heather

LADIES YOUTH
1255 Rally/1251

Features

- 100% polyester brushed tricot warm-up jacket
- Versatile fabric for warm and cool weather
- Lightly brushed interior giving comfort with movement
- Two side zippered pockets with rubber puller
- Naturally wrinkle, fade and shrink resistant fabric
- **1255 (ladies): ladies engineered fit, matches Style #1555 (PG 69)**



LADIES YOUTH
1255 Rally/1251

MSRP \$35.90 (P)
 YOUTH \$33.90 (P)



Sizes Ladies Adult: XS • S • M • L • XL • 2XL

† Colors available in youth.

6 COLORS AVAILABLE



Black / Gold / White †



Grey / Black / White



Navy / Gold / White †



Navy / Scarlet / White †



Royal / Black / White



Scarlet / Black / White †

YOUTH
1365/1361 *Conqueror* (Ladies)

MSRP \$19.90 (P)
 YOUTH \$17.90 (P)



Sizes Ladies Adult: XS • S • M • L • XL • 2XL Sizes Youth: JS • JM • JL

† Colors available in youth.

6 COLORS AVAILABLE



Navy / White †

Purple / White †

Scarlet / White †

White / Black †

White / Navy †

White / Scarlet †

Features

- 100% polyester brushed tricot warm-up jacket
- Versatile fabric for warm and cool weather
- Lightly brushed interior giving comfort with movement
- Two side zippered pockets with rubber puller
- Naturally wrinkle, fade and shrink resistant fabric
- **1365 (ladies): ladies engineered fit, great match with Style #1555 (PG 61)**

YOUTH
675/674 *Instep*

MSRP \$33.90 (P)
 YOUTH \$32.90 (P)



Sizes Adult: XS** • S • M • L • XL • 2XL • 3XL • 4XL
 Sizes Youth: JS • JM • JL

Colors available in youth.
 ** Black is the only color available in XS.

3 COLORS AVAILABLE



Black †

Navy †

Royal

Features

- 100% polyester brushed tricot
- Versatile fabric for warm and cool weather
- Lightly brushed interior giving comfort with movement
- Adjustable drawstring, elastic waist
- Two side seam pockets
- Reinforced double needle stitching for maximum durability
- Open bottom with 12" zippered leg closure
- **Great match with Style #1365 (PG69) & #1255 (PG 68)**

LADIES
1555 *Perseverance*

LADIES \$29.90 (P)

Sizes Ladies Adult: XS • S • M • L • XL • 2XL

Youth Pants: JS • JM • JL refer to Style #674 Pg. 70

3 COLORS AVAILABLE



Black

Navy

Scarlet

Features

- 100% polyester brushed tricot
- Versatile fabric for warm and cool weather
- Lightly brushed interior giving comfort with movement
- Adjustable drawstring, elastic waist
- Two side seam pockets
- Reinforced double needle stitching for maximum durability
- Open bottom with 12" zippered leg closure
- **1555 (ladies): ladies engineered fit, great match with ladies Style #1255 (PG 68) and #1365 (PG 69)**

Extreme Deals



FEATURES

- 100% polyester, performance polo shirt
- MicroMesh performance fabric, moisture wicking properties
- Ultra soft fabric with exceptional breathability
- Tagless labeling for extra comfort
- Open cuffs and premium ribbed collar
- Colors: BW, NW, OW, RW, SW, WB, WN, WR

MSRP
\$29.90 (P)

SIZES
Adult: S-4XL

NEW MSRP
\$7.90 (P)

Style **1130**



FEATURES

- 5-ounce premium warm-up shirt, 100% polyester
- More robust fabric than your standard tech tee
- MicroMesh performance fabric, moisture wicking properties
- Colors: BS, BW, FB, FG, MB, NG, PB, RB, RG, SB

MSRP
\$15.90 (P)

SIZES
Adult: S-4XL

NEW MSRP
\$10.90 (P)

Style **1230**



FEATURES

- 5-ounce, 100% polyester
- New generation LuxKnit performance fabric, moisture wicking
- Premium snag resistant fabric with soft hand feel
- Tagless labeling for extra comfort
- Open cuffs and premium ribbed knit collar
- Colors: BW, RW

MSRP
\$33.90 (P)

SIZES
Adult: S-3XL

NEW MSRP
\$16.90 (P)

Style **1410**



FEATURES

- 5 ounce, 100% polyester
- New generation LuxKnit performance fabric, moisture wicking
- Premium snag resistant fabric with soft hand feel
- Tagless labeling for extra comfort
- Tagless labeling for extra comfort
- Colors: BG, FG, NG, RB, SB, SG

MSRP
\$33.90 (P)

SIZES
Adult: S-3XL

NEW MSRP
\$16.90 (P)

Style **1420**



FEATURES

- 5-ounce
- Micromesh performance fabric, moisture wicking
- 100% polyester
- Tagless labeling for extra comfort
- Open cuffs and premium ribbed collar
- Three button placket
- Colors: BW, FW, GW, NW, SW, WB, WN

MSRP
\$21.90 (P)

SIZES
Adult: S-4XL

NEW MSRP
\$16.90 (P)

Style **944**



FEATURES

- 5-ounce premium warm-up shirt, 100% polyester
- More robust fabric than your standard tech tee
- UltraKnit durable fabric, moisture wicking
- Dual-sided, snag-resistant fabric with smooth and textured surfaces
- Colors: CG, OG, SG

MSRP
\$19.90 (P)

SIZES
Adult: S-3XL

NEW MSRP
\$12.90 (P)

Style **1560**



FEATURES

- 5-ounce premium warm-up shirt, 100% polyester
- More robust fabric than your standard tech tee
- MicroMesh performance fabric, moisture wicking properties
- Colors: BS, GC, GM, GP, GR, GS, GW

MSRP
\$23.90 (P)

SIZES
Adult: S-4XL

NEW MSRP
\$12.90 (P)

Style **1320**



FEATURES

- 5-ounce premium warm-up shirt, 100% polyester
- More robust fabric than your standard tech tee
- MicroMesh performance fabric, moisture wicking properties
- Colors: BS, BW, FB, NG, NS, PB, RB, RG, SB

MSRP
\$23.90 (P)

SIZES
Adult: S-4XL

NEW MSRP
\$12.90 (P)

Style **1325**



FEATURES

- 5-ounce premium warm-up shirt, 100% polyester
- More robust fabric than your standard tech tee
- Birds-eye performance fabric, moisture wicking
- Colors: FW, GW, MW, PW, RW, SW, WB, WF, WM, WN, WR, WP, WS

MSRP
\$15.90 (P)

SIZES
Adult: S-4XL

NEW MSRP
\$10.90 (P)

Style **828**



FEATURES

- HeatherSoft performance fabric, moisture wicking
- Constructed with cationic fabric (50% cotton / 50% cationic polyester)
- Lightweight, breathable and ultra-soft fabric for extreme comfort
- Colors: BG, FG, MG, NG, PG, RG, SG

MSRP
\$15.90 (P)

SIZES
Adult: S-2XL

NEW MSRP
\$7.90 (P)

Style **1440**



FEATURES

- 5-ounce, 100% polyester
- MicroMesh performance fabric, moisture wicking properties
- Ultra soft fabric with exceptional breathability
- Tagless labeling for extra comfort
- Colors: BG, BS, BW, FB, MB, NG, NS, PB, RB, RG, SB

MSRP
\$33.90 (P)

SIZES
Adult: XS-2XL

NEW MSRP
\$13.90 (P)

Style **1215**



FEATURES

- 5-ounce
- SoftCool® performance fabric, moisture wicking
- 100% polyester
- Ultra-soft knit fabric offers exceptional breathability
- Colors: WB, WF, WN, WS

MSRP
\$31.90 (P)

SIZES
Adult: XS-2XL

NEW MSRP
\$12.90 (P)

Style **808**



FEATURES

- 6-ounce
- SoftCool moisture wicking, ultra soft, breathable fabric
- 88% polyester, 12% spandex fabric
- Princess seams and ladies engineered fit
- Colors: MW, NW, PW

MSRP
\$26.90 (P)

SIZES
Adult: XS-2XL

NEW MSRP
\$10.90 (P)

Style **1020**



FEATURES

- 100% polyester, performance polo shirt
- Birds-eye performance fabric, moisture wicking
- Snag resistant fibers and reinforced double needle stitching for superior durability
- Colors: BW, KW, NW, OW, RW, SW, WB, WS

MSRP
\$29.90 (P)

SIZES
Adult: XS-2XL

NEW MSRP
\$7.90 (P)

Style **1035**



FEATURES

- 5-ounce, 100% polyester
- Pebbled performance fabric, moisture wicking
- Sturdy knit offers durability (snag resistance) while providing a soft hand feel
- Colors: BS, RW, WB, WM, WN, WR, WS

MSRP
\$25.90 (P)

SIZES
Adult: XS-2XL

NEW MSRP
\$12.90 (P)

Style **1125**



FEATURES

- 5-ounce, 100% polyester
- Birds-eye performance fabric, moisture wicking
- Snag resistant fibers and reinforced double needle stitching
- for superior durability
- UV protection to shield your body
- Colors: BW, FW, GW, NW, PW, RW, SW, WB, WR, WS

MSRP
\$28.90 (P)

SIZES
Adult: XS-2XL

NEW MSRP
\$13.90 (P)

Style **1190**

Extreme Deals



FEATURES

- 100% premium Poly-Micro shell
- Ultra-soft, noiseless fabric offers you superior comfort
- Colors: BW, BV, FV, GW, KW, MW, NV, NW, PW, RW, SW

MSRP
\$31.90 (P)

YOUTH MSRP
\$30.90 (P)

NEW MSRP
\$19.90 (P)

NEW YOUTH MSRP
\$17.90(P)

SIZES
Adult: S-4XL

YOUTH SIZES
JS - JL

Style **1165/1164**



FEATURES

- 100% premium Poly-Micro shell
- Ultra-soft, noiseless fabric offers you superior comfort
- Breathable, graphite mesh-lined body and sleeves
- Water and wind resistant
- Colors: BW, FW, GW, PW, RW, SW

MSRP
\$41.90 (P)

YOUTH MSRP
\$40.90 (P)

NEW MSRP
\$25.90 (P)

NEW YOUTH MSRP
\$23.90(P)

SIZES
Adult: X2-3XL

YOUTH SIZES
S - L

Style **1265/1264**



FEATURES

- 100% premium Poly-Micro shell warm-up jacket
- Quarter zip with black rubber puller
- Ultra-soft, noiseless fabric offers you superior comfort
- Ash grey, jersey lining on body and taffeta lined sleeves
- Water and wind resistant
- Colors: BS, MW, FW, NW, RW, SW

MSRP
\$49.90 (P)

SIZES
Adult: XS-3XL

NEW MSRP
\$37.90 (P)

Style **1170**



FEATURES

- Polyester shell with dual-sided herringbone design pattern
- Heavyweight Jacket
- Premium MicroTek fabric designed for adverse weather conditions - water and wind resistant with minimal noise
- Colors: BS, GB, GM, GN, GP, GS, GW

MSRP
\$48.90 (P)

YOUTH MSRP
\$46.90 (P)

NEW MSRP
\$30.90 (P)

NEW YOUTH MSRP
\$26.90 (P)

SIZES
Adult: S-4XL

YOUTH SIZES
JS - JL

Style **1380/1381**



FEATURES

- 100% polyester Birds Eye knit fabric
- Two front, side zippered pockets with rubber pulls
- Extra spacious, right chest pocket
- Rubber puller on zippered chest pocket
- Adjustable cord lock on bottom hem
- Self fabric collar
- Colors: MW

MSRP
\$39.90 (P)

SIZES
Adult: S-4XL

NEW MSRP
\$8.90 (P)

Style **1060**



FEATURES

- 100% ComfortTek double-knit polyester, moisture wicking performance fleece
- Quarter zip with black rubber puller
- Three piece hood for better fit (stylish contrast color blocking on interior border of hood)
- Premium matte appearance with soft brushed interior
- Colors: BG, FG, MG, NG, SG

MSRP
\$40.90 (P)

SIZES
Adult: XS-3XL

NEW MSRP
\$30.90 (P)

Style **1580**



FEATURES

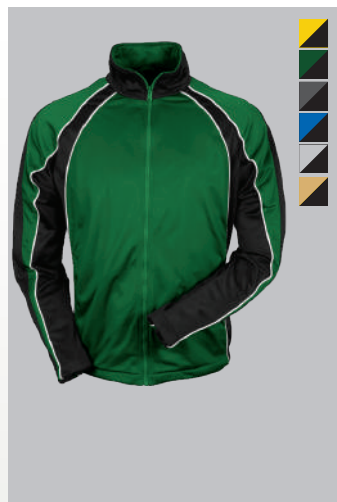
- 100% polyester brushed tricot
- Versatile fabric for warm and cool weather
- Lightly brushed interior giving comfort with movement
- Two side zippered pockets with rubber puller
- Piping design down shoulder and sleeves
- Full zip with premium rubber zipper puller
- Open bottom hem with stop cords
- Colors: PW, SW

MSRP
\$35.90 (P)

SIZES
Adult: S-4XL

NEW MSRP
\$14.90 (P)

Style **1360**



FEATURES

- 100% polyester brushed tricot warm-up jacket
- Versatile fabric for warm and cool weather
- Lightly brushed interior giving comfort with movement
- Two side zippered pockets with rubber puller
- Colors: GB, FB, GB, RB, SV, VB

MSRP
\$37.90 (P)

YOUTH MSRP
\$35.90 (P)

NEW MSRP
\$31.90 (P)

NEW YOUTH MSRP
\$25.90 (P)

SIZES
Adult: S-3XL

YOUTH SIZES
JS - JL

Style **670/671**



FEATURES

- Premium SoftShell fabric comprised of 88% polyester / 12% spandex (offers advanced motion flexibility) bonded to 100% micro-polar fleece
- Affordable, value-priced option
- Extremely robust, mid-weight jacket for high warmth
- Colors: BG, FG, MG, NG, RG, SG

MSRP
\$39.90 (P)

SIZES
Adult: XS-2XL

NEW MSRP
\$28.90 (P)

Style **1175**



FEATURES

- 100% premium Poly-Micro shell
- Ultra-soft, noiseless fabric offers you superior comfort
- Breathable, mesh-lined body and taffeta lined sleeves provides motion flexibility
- Colors: BG, FW, KW, RG

MSRP
\$39.90 (P)

SIZES
Adult: XS-2XL

NEW MSRP
\$29.90 (P)

Style **1145**



FEATURES

- 100% premium Poly-Micro shell
- Ultra-soft, noiseless fabric offers you superior comfort
- Ash grey, jersey lining on body and taffeta lined sleeves
- Water and wind resistant
- Colors: BW, RW, SW

MSRP
\$39.90 (P)

SIZES
Adult: XS-2XL

NEW MSRP
\$20.90 (P)

Style **1150**



FEATURES

- 100% polyester brushed tricot
- Versatile fabric for warm and cool weather
- Lightly brushed interior giving comfort with movement
- Adjustable drawstring, elastic waist
- Two side seam pockets
- Reinforced double needle stitching for maximum durability
- Colors: BK, NV, RY, SC

MSRP
\$31.90 (P)

SIZES
Adult: S-3XL

NEW MSRP
\$23.90 (P)

Style **1550**



FEATURES

- 100% polyester brushed tricot warm-up jacket
- Versatile fabric for warm and cool weather
- Lightly brushed interior giving comfort with movement
- Two side zippered pockets with rubber puller
- Reinforced double needle stitching for maximum durability
- Colors: BO, BS, GB, MB, NG, NS, PB, RB, RG, SB

MSRP
\$33.90 (P)

SIZES
Adult: S-4XL

NEW MSRP
\$29.90 (P)

Style **1250**



FEATURES

- 100% polyester brushed tricot warm-up jacket
- Versatile fabric for warm and cool weather
- Lightly brushed interior giving comfort with movement
- Two side zippered pockets with rubber puller
- Naturally wrinkle, fade and shrink resistant fabric
- Colors: MW, RW

MSRP
\$33.90 (P)

SIZES
Adult: XS-2XL

NEW MSRP
\$14.90 (P)

Style **1365**

▼ MEN'S PERFORMANCE SHIRTS

Product Index



1120 P.47 1130 P.70 1220 P.48 1310 P.45 1335 P.50 1450 P.32 1510 P.51 1520 P.20 1530 P.16 1545 P.49 1610 P.18



1620 P.26 1630 P.22 1710 P.24 1730 P.14 1740 P.42 1750 P.36 1810 P.38 1820 P.30 1830 P.40 2010 P.28 2020 P.34

▼ LADIES WEAR



1035 P.71 1125 P.47 1315 P.44 1455 P.33 1525 P.20 1535 P.17 1615 P.18 1625 P.27 1635 P.22 1715 P.24



1735 P.15 1745 P.42 1755 P.36 1815 P.38 1825 P.30 1835 P.40 2015 P.29 2025 P.35

▼ OUTERWEAR



675 P.69 988 P.61 1080 P.62 1088 P.63 1145 P.63 1155 P.63 1250 P.73 1255 P.68 1280 P.64 1365 P.69



1470 P.59 1480 P.58 1490 P.58 1495 P.65 1550 P.73 1580 P.72 1760 P.74 1765 P.60 1880 P.67 1885 P.66



2040 P.52 2045 P.53 2070 P.54 2075 P.55 2080 P.56 2085 P.56 2060 P.57 2065 P.57

▼ YOUTH



674 P.69 1081 P.62 1087 P.63 1251 P.68 1361 P.69

TONIX SIZE CHART

Tonix is committed to outfitting your team with apparel that not only looks good, but fits well. The body measurements and corresponding apparel size shown in the chart below may be used as a reference to assist you in determining the garment size that will best fit your needs. **Note that the sizing chart should only be used as a guideline – these are not exact style measurement.** For style specific sizing we recommend that you contact our Customer Service department to obtain exact sizing.

	XXS	XS	S	M	L	XL	2XL*	3XL	4XL**	JS	JM	JL
Sports Shirts												
Men & Boys – Chest	N/A	N/A	35/37	38/40	41/43	44/46	47/49	50/52	53/55	29/32	31/34	33/36
Women & Girls – Chest	N/A	30/32	33/35	36/38	38/40	41/43	44/47	N/A	N/A	N/A	N/A	N/A
Warm-up Jacket												
(Unisex)												
Chest	28/29	30/33	34/37	38/41	42/45	46/49	50/53	54/57	58/61	30/32	32/34	34/37
Sleeves	28/29	29/30	30/31	31/32	32/33	33/34	34/35	35/36	36/37	22/23	24/25	26/27
Warm-up Pants												
(Unisex)												
Waist	22/23	24/26	28/30	32/34	36/38	40/42	44/46	48/50	52/54	24/28	26/30	28/32
Inseam	30	30	31	31	32	32	33	33	33	21	24	27
Warm-up Jacket												
(Women)												
Chest	N/A	29/31	32/34	35/37	38/40	41/43	44/46	N/A	N/A	N/A	N/A	N/A
Sleeves	N/A	29/29.5	29.5/30.5	30.5/31.5	31.5/32.5	32.5/33.5	33.5/34.5	N/A	N/A	N/A	N/A	N/A
Warm-up Pants												
(Women)												
Waist	N/A	25/26	27/28	29/30	30/32	33/34	35/36	N/A	N/A	N/A	N/A	N/A
Inseam	N/A	28	29	30	31	31.5	32	N/A	N/A	N/A	N/A	N/A
Pullovers												
(Unisex)												
Chest	N/A	30/33	34/37	38/41	42/45	46/49	50/53	54/57	58/61	27/30	30/32	32/35
Sleeves	N/A	31/32	31/32	32/33	33/34	34/35	35/36	36/37	37/38	21/22	23/24	26/27

Note: Sizes are rounded to the nearest inch.

**2XL/3XL sizing is a bridge size meant for customers typically wearing 2XL or 3XL. Chest measurement would be in the range of 47-50.*

***4XL/5XL sizing is a bridge size meant for customers typically wearing 4XL or 5XL. Chest measurement would be in the range of 54-57.*

COMPANY POLICY

Warranty

Tonix Corporation is committed to offering our customers the finest quality team apparel. Manufacturer defects found with our products will be repaired, replaced or credited to your account at no additional charge.

Catalogs

Tonix offers customers the following marketing materials: Main Product Catalog, Decorating Guide, and Price Book. These material are offered free of charge. However, shipping charges may apply depending on quantity requested.

Promotions

Tonix offers 1-2 new promotions every month in addition to a variety of seasonal special offers. To learn more about the most current promotion being offered, please e-mail us at sales@tonixteams.com and request to be placed on our e-mail promotions mailing list.

Terms

Net 30 terms on approval of credit. To establish net terms, all applicants are required to complete and submit a credit application. Visit www.tonixteams.com to download application. Past due amounts subject to a 1.5% per month, 18% APR, service charge.

Order Placement

Orders may be placed online through our website (www.tonixteams.com), submitted by fax, phone or email (sales@tonixteams.com). Typically, orders submitted online or by fax/email will be processed more rapidly. In order to facilitate order placement, please have the following information available at the time you place your order: customer account number (if available), style number, color and quantity (from smallest to largest sizes).

Shipping

Orders placed on blank, in-stock merchandise before 1 PM Pacific Standard Time will generally be shipped on the same day. Orders placed after this time are typically shipped within 1 business day. Orders are shipped UPS 3-DAY to customers located in the continental U.S. with exception of the following states: AZ, CA, CO, ID, MT, NM, NV, OR, UT, WA, WY. Products sent to customers located in these 11 western states are shipped UPS ground and typically arrive within 3 business days. Drop ship orders by customers located in the above 11 western states are also shipped UPS ground unless otherwise specified. As a courtesy to our customers, Tonix provides UPS 3-DAY shipment at ground rates. Products shipped to AK & HI are shipped UPS Ground. Shipments to PR are shipped UPS Ground or US Postal Service upon request. All closeout sales ship UPS ground unless otherwise specified.

Return Policy

All returns require a Return Authorization Number (RA#) and may be obtained by contacting Customer Service. A copy of the original packing slip or invoice must accompany the return. All returns are subject to a Restocking Fee of 15% of the purchase price, or \$15.00, whichever is greater. Returns will not be accepted without an RA#. Claims for merchandise damaged during shipping or any discrepancies with the order must be filed within 5 days of receipt. Customers wishing to return products must do so within 30 days of receipt of the merchandise. Apparel should be thoroughly inspected prior to decorating – no returns will be accepted on apparel that has been altered. All sales are final for closeout items and may not be returned.



Polos That Work Where You Work



Food Service



Event Staffing



Sports & Athletics



Corporate Branding



Manufacturing



Schools & Universities

PPAI
113142



© Copyright 2020 Tonix Corporation.

Embroidered logos pictured in this catalog are property of their primary trademark owners and do not represent endorsement by Tonix. Colors pictured in this catalog are meant as a general representation of the actual apparel color and should only be used as a guide. Samples should be ordered to determine exact color. Catalog price \$2.50.

And now these three remain:
faith, hope and love.
But the greatest of these is love.
1 Corinthians 13:13