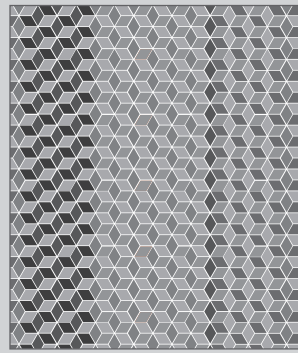
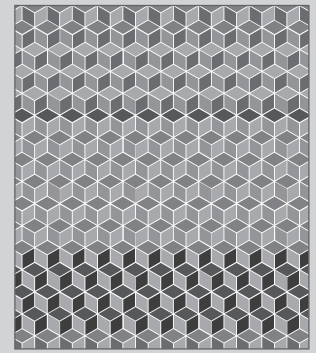


**MURAL**  
**Twill**

1/8" – 3/16" GROUT LINE



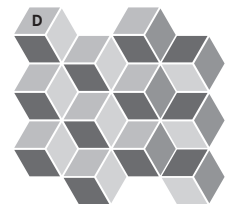
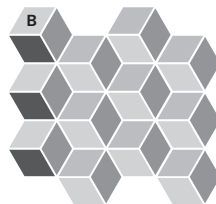
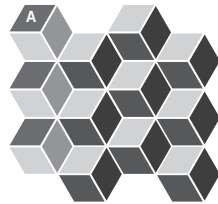
HORIZONTAL INSTALLATION



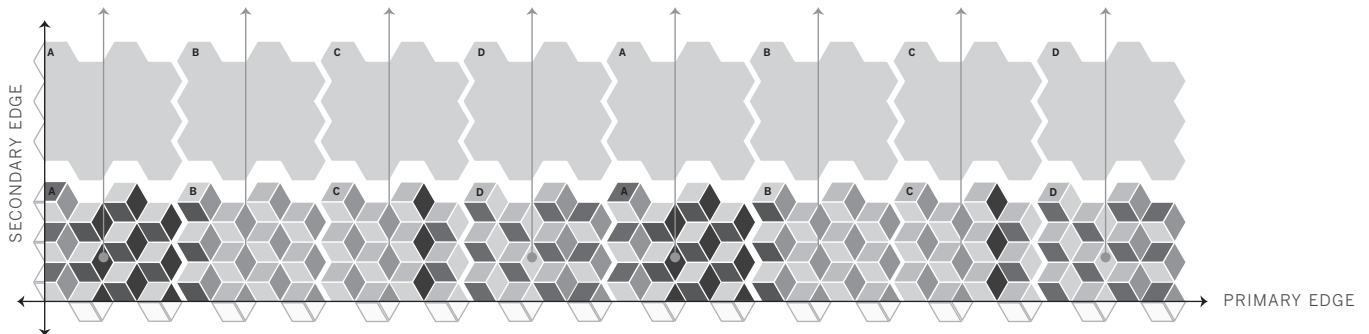
VERTICAL INSTALLATION

**TWILL MODULE BY THE SHEET**

THE COMPLETE TWILL MODULE IS CREATED BY JOINING ALL FOUR UNIQUE SHEETS END-TO-END AS SHOWN. EACH FACE-MOUNTED SHEET IS LABELED IN THE UPPER LEFT CORNER WITH A, B, C, OR D. THE PATTERN IS CREATED BY REPEATING THE TWILL MODULE TO DESIRED HEIGHT OR WIDTH.



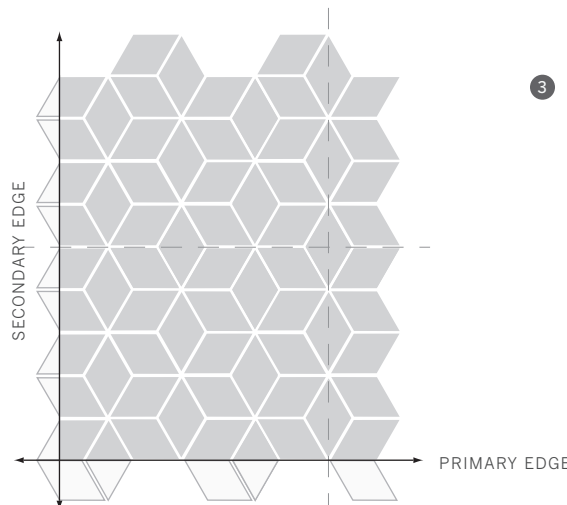
**HOW TO START**



SELECT A HORIZONTAL OR VERTICAL ORIENTATION AND PRIMARY EDGE. A HORIZONTAL ORIENTATION WILL HAVE A HORIZONTAL PRIMARY EDGE. LAY OUT SHEETS IN A-B-C-D ORDER ALONG THE PRIMARY EDGE OF YOUR INSTALLATION. REPEAT A-B-C-D SHEETS TO THE OPPOSITE EDGE OF YOUR INSTALLATION TO MAKE THE FIRST ROW. REPEAT THIS FIRST ROW TO HEIGHT OR WIDTH OF INSTALLATION.

**GENERAL INSTALLATION GUIDELINES**

- 1 REGARDLESS OF ORIENTATION, DETERMINE YOUR PRIMARY GRID LINES. IT IS IMPORTANT TO KEEP THE PRIMARY GRID LINES STRAIGHT AND ALIGNED THROUGHOUT THE INSTALLATION.
- 2 LAY OUT MODULES TO CONSTRUCT YOUR PATTERN. CUT THROUGH MOUNTING TAPE TO MAKE ADJUSTMENTS AS YOU GO.



- 3 CORRECTIONS OF INDIVIDUAL TILES WITHIN FACE-MOUNTED SHEETS MAY BE NECESSARY. SAVE EXCESS EDGE TILES CUT FROM SHEETS TO FILL IN OPPOSING EDGES LATER.

