

FR Roller Shades



HunterDouglasContract

WINDOW COVERINGS

Effective and attractive, Hunter Douglas Contract FR Roller Shades offer hundreds of fabric choices, mounted on durable, powerful operating mechanisms. They are a versatile and reliable choice to manage light and control glare for a wide range of manual and motorized applications.

2	SHADING STRATEGY
3	MOTORIZATION
4	BENEFITS
6	ROLLER SHADE FABRICS
8	MANUAL SHADES
10	MOTORIZED SHADES
12	PROJECT GALLERY





Inside cover: Reflections at Bloomington Central, Bloomington, MN
Architect: Elness Swenson Graham Architects with architectsAlliance
Product: Motorized Roller Shades

Front cover: U.S. Citizenship and Immigration Services, Irving, TX
Architect: 4240 Architecture
Product: Manual and motorized FR Roller Shades, and CD 60 FR Aluminum Horizontal Blinds



Hunter Douglas FR Roller Shades help create environments that are comfortable, healthy, productive, and sustainable. Our products are constructed to minimize environmental impact while meeting the highest standards for industrial, institutional, and commercial applications.

A DAYLIGHTING

Contact with the outdoors is a proven factor in employee productivity. Windows offer views and admit plenty of daylight. Roller shades manage and optimize natural daylight, helping reduce dependence on artificial lighting.

B GLARE CONTROL

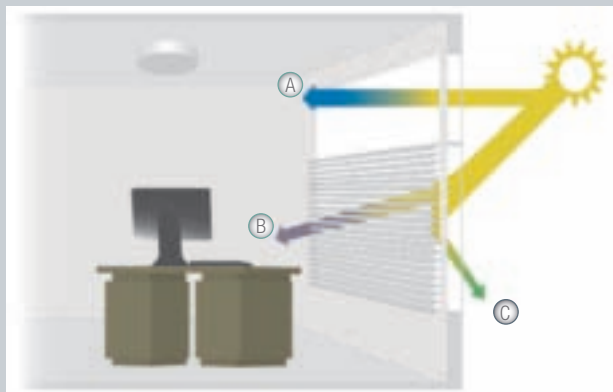
Roller shades allow employees to control the direction and amount of sunlight entering their workspace, with light-filtering fabrics that eliminate glare and reflections. Hundreds of fabric choices enable precise levels of daylight control, including 0% open fabrics for blackout applications, 1-3% open fabrics for privacy and room-darkening, and 5-10%+ open fabrics that filter glare.

C MANAGEMENT OF THERMAL GAIN

Window coverings manage heat generated by the sun: when it is hot, they can be closed to minimize solar heat gain; when cold, they can be raised to allow solar heating.

AESTHETICS

Shades filter daylight to create even, glare-free lighting levels. They also ensure privacy and can provide a consistent look from the exterior of a building.



INDOOR AIR QUALITY

Poor air quality is a common source of employee complaints. Many of our FR fabrics are certified for low emissions by the GREENGUARD Environmental Institute and passes the stricter requirements of GREENGUARD Children and SchoolsSM, and are GREENGUARD listed for Microbial Resistance. Careful selection of low-emitting materials such as sunscreen fabrics minimizes the presence of contaminants such as volatile organic compounds (VOCs), odors, and dust.



Hunter Douglas Contract provides flexible control of virtually any motorized product on projects of any size. Our state-of-the-art components can be mixed in a given installation without limitations. They offer feature-rich controls, which give you the highest level of function and accuracy.

By responding to changing conditions, automated shades deliver a number of important enhancements to building efficiency and performance:

DYNAMIC MANAGEMENT OF THERMAL GAIN

Intelligent automated systems can position shades based on the orientation of the sun.

INCREASED ENERGY EFFICIENCY

Automated systems contribute to energy savings by managing the amount of light and heat that comes through the window. Using natural light instead of artificial lighting can lead to energy savings.

AESTHETICS

Automated shades provide a uniform look to the exterior of a building.

CONVENIENCE

Motorized roller shades provide greatly improved convenience for user operation, eliminating the need to manipulate cords or rods. In addition, they can impact the overall performance, as studies show that most people do not open or close shades in response to changing conditions outside.

Benefits



Our roller shades provide an excellent solution for controlling light and glare. Simple, versatile, distinctive, and cost-effective, our line includes a wide range of decorative and performance fabrics, mounted on high-quality hardware.

WIDEST RANGE OF FABRICS

Over 200 FR fabrics with choices for color, openness, and design to meet any specification.

SUPERIOR LIGHT CONTROL

Fabric options and operating systems offer solutions from light-filtering to complete blackout. Our dual shade system allows both blackout and light-filtering shades at the same window.

RELIABLE HARDWARE

Manual and motorized hardware systems engineered to meet high standards for performance and reliability.

QUIET MOTORIZATION

Whisper Motors™ operate shades at sound levels equivalent to office conversation.

EASY INSTALLATION

Require little mounting space, with universal brackets.

AESTHETICS

Nearly invisible when raised, shades feature a variety of fascia and valance options. Clutch operating system allows precise control to help ensure a uniform look.

SUSTAINABLE CONSTRUCTION

Most of our PVC-free and standard shading fabrics are certified for low emissions by the GREENGUARD Environmental Institute and passes the stricter requirements of GREENGUARD Children and SchoolsSM.

SPECIALTY APPLICATIONS

Ability to provide roller shades in large expanses. Custom logo printing options available.

LIFETIME GUARANTEE

Operating Systems

Manual Clutch Operating System

Stainless steel chain hangs at the side, leaving the view unobstructed. Up and down stops prevent shades from being raised or lowered too far.

Motorization

Versatile range of motors and controls to maximize shading benefits, with automation that responds to changing sun conditions throughout the day.

Dual Shade

Add versatility to any space by allowing two different styles of fabrics to be used on the same window (one in front of the other).

Coupled Shade

Two or more separate tube assemblies joined together by the use of mechanical couplers and operated by one drive mechanism. All shades operate in tandem.

FR Fabrics

Dark Colors	Optimize exterior views, filter glare & UV
Light Colors	Screen exterior views, manage thermal gain
Dual Colors	Reflective outward-facing surfaces reduce thermal gain, optimize exterior views
Blackout (0% openness)	Blocks light, ideal for A/V, conference, and patient rooms
Open weave (1%-14%)	Filter sunlight, preserve exterior views

Options

Fascia	Conceals shade, merging the shading system with the surrounding room. Available in 3", 4", or 7" standard sizes.
Blockout	Aluminum side and bottom channels, fitted with light-blocking wool pile prevent light leakage around edges and bottom of shade. Ideal for room-darkening and A/V applications.
Pocket	Integrates shading into the ceiling plane. Prefabricated surface and ceiling pockets available.
Additional	Color-coordinated trims, 4 clutch sizes, banded shades, reverse roll, top and bottom covers, sealed pocket hem bar, extruded pockets.

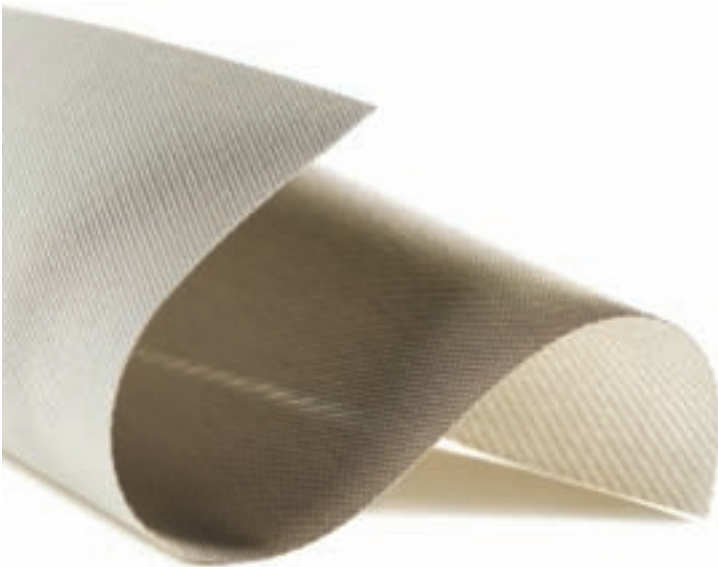




Hunter Douglas Contract offers a comprehensive line of sunscreen fabrics, giving designers the most choices in the industry for light control and aesthetics. All fabrics are flame-retardant and meet or exceed North American and European standards. Logos and custom printed shades available.

GlacierScreen™ FR Solar Shading Fabrics

GlacierScreen™ FR Solar Shading Fabrics preserve indoor air quality through an innovative new manufacturing process that eliminates nearly all odors due to off-gassing by avoiding the use of VOC-emitting substances. Available in 3%, 5%, 10%, 1% Duotone and 3% Duotone, with GREENGUARD Children and SchoolsSM certification, VOC-free construction and microbial resistance.



Features

- Fabrics are colorfast and reinforced against yellowing or reddening due to heat and UV exposure
- Tested and certified to meet the Oeko-Tex Standard 100 for the assessment of harmful substances in textiles
- Proven sterilization against bacteria, fungi, and viruses. Silver nano sterilization verified for anti-microbial performance
- Properties tested to remain in the long term, even after washing

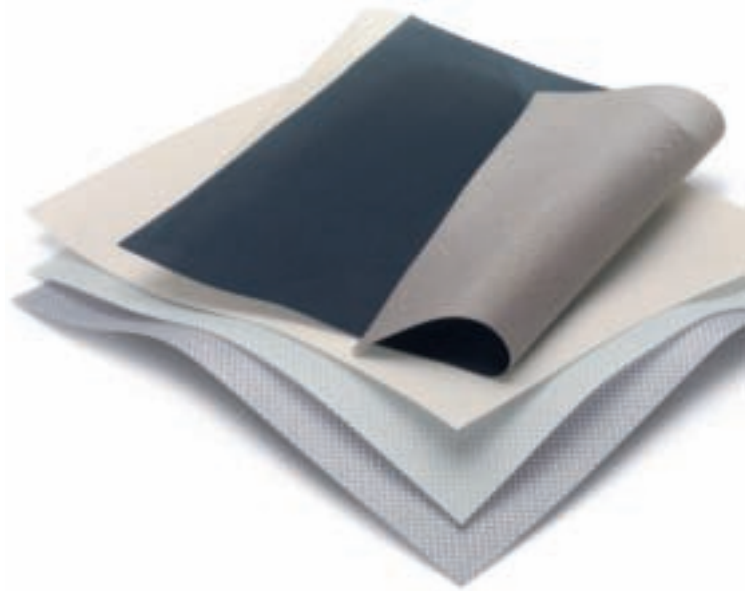


GreenScreen® Solar Shading Fabrics

Our environmentally responsible GreenScreen® fabrics deliver superior solar control with the most color and openness choices in the industry. All deliver the durability and dimensional stability you demand, with flame-retardance that meets the strictest international standards.

Features

- PVC-free with no VOCs to eliminate the need for off-gassing
- Environmentally friendly and completely recyclable
- High performance fabric with outstanding shading coefficients
- Variety of colors and opennesses

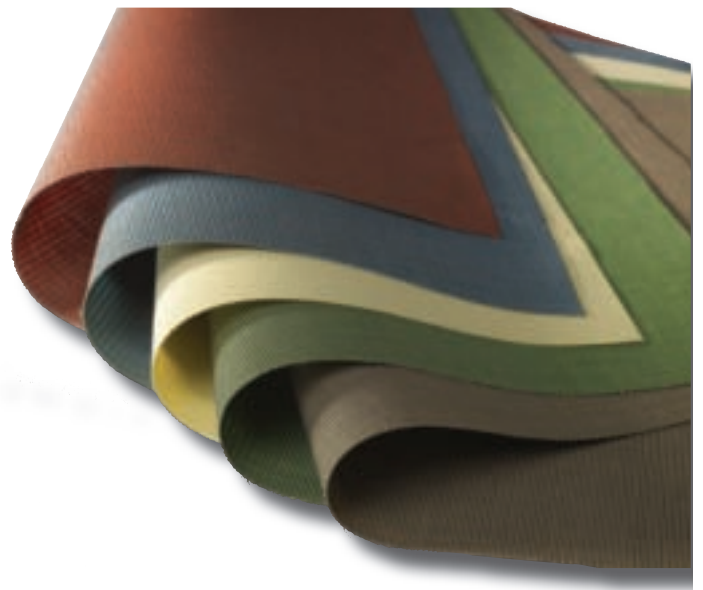


Fabrics with Enduris™ Glass Core

The durability and stability of fabrics with Enduris™ Glass Core technology comes from the inside out, starting with a fiberglass strand that makes it naturally fire resistant, dimensionally stable, and resistant to expansion and stretching due to heat. An innovative vinyl coating protects the fiberglass, providing additional durability with UV inhibitors.

Features

- Superior coating uniformity and surface aspect
- High resistance to temperature variations
- Chemically inert
- Non-rotting
- Low thermal conductivity
- Glass fiber yarns are a natural composite material
- Easy to clean



Manual Shades

Hunter Douglas Contract manual shades are a versatile and reliable choice for managing light, enhancing a building's energy efficiency, and controlling glare. Our new manual shade hardware was engineered to lead the industry.



Manual Shade Options

Bead Chain Clutch Operating System

- Pulley clutch operating system allows precise control for smooth operation of shade
- Compact bi-directional gear assembly mounted on the right side (standard) or left
- Requires no adjustments over lifetime of system
- Friction-free operation reduces component wear and increases product life

Dual Manual Shade

- Two operating mechanisms on one bracket for an integrated look
- Unlimited number of combinations for different shade materials
- Chain drive can be on same side or opposite side

Manual Shade With Fascia

- Conceals shade mechanism from front and sides
- Available in 3", 4", or 7" standard sizes
- Color options: anodized aluminum finish or painted white, vanilla, bronze, or black
- Optional top and back cover

Manual Shade With Blockout System

- Aluminum side and bottom channels, fitted with light-blocking wool pile
- Color options: anodized aluminum finish or painted white, vanilla, bronze, or black
- No light gaps at fascia/side channel connection
- Light-proof hem bar recessed into light-proof side channel

Manual Shade With Extruded Pocket

- Streamlined integration into the ceiling for concealment of shades
- Available for standard dual roller shades
- Prefabricated designs available in surface or ceiling mount
- Available in 5.25" and 9"
- Tile support to seam with the ceiling grid
- Optional end caps and closure mounts

Motorized Shades

Hunter Douglas Contract commercial grade motors allow for unlimited flexibility in both size and shape, for all construction applications. The compact size, high torque, and quiet operation of our motors make them ideal for a variety of uses including large shades, quiet environments, and simultaneous operation of multiple shade bands.



Motorized Shade Options

Quiet Motor

- Whisper Motors™ operate at sound levels equivalent to office conversation
- Maintenance-free and permanently lubricated
- Features overheating protection
- Electromagnetic disk brake for a smooth and accurate stop without slippage
- 115V AC tubular motor with 4-wire pigtail

Radio Technology Motor (RTS Motor)

- Built-in radio receiver 3-wire pigtail allows for attachment of optional three-prong plug for plug-and-play operation
- 24V DC Quiet Motor— RTS and Standard available

Motorized Shade With Fascia & Blockout System

- Conceals shade mechanism from front and sides
- Blockout system with aluminum side and bottom channels, no light gaps
- Available in 3" or 4"

Dual Motorized Shade With Fascia

- Standard 7" fascia
- Two operating mechanisms on one bracket for an integrated look
- Unlimited number of combinations for different shade materials
- Optional fascia end plates

Motorized Coupled Shades With Fascia

- Two or more separate tube assemblies joined together by use of mechanical couplers, operated by one drive mechanism
- All shades operate in tandem
- Good option for reducing the total installed cost
- Simplifies programming and setup of the job

Controls

- A variety of controls, from simple switches to intelligent sun-tracking systems that incorporate sun sensors and integrate with building management
- Option to operate a group of shades with one switch, or operate individual shades separately



World Headquarters for IFAW

RELATED PROJECTS LIST

Project: World Headquarters for IFAW
Yarmouth Port, MA
Architect: designLAB architects
Product: Roller Shades

Project: Hugueley Memorial Medical Center, Fort Worth, TX
Product: 400+ Manual Roller Shades, GlacierScreen™

Project: United Health Group, Minneapolis, MN
Product: Coupled Motorized Roller Shades, M Screen

Project: Mercedes Benz Dealer, Cutler Bay, FL
Product: 70 Roller Shades with fascia, E Screen

Project: Chipotle Corp. HQ, Denver, CO
Product: Coupled Motorized Roller Shades

Project: U.S. Citizenship and Immigration Services, Irving, TX
Architect: 4240 Architecture
Product: Manual and Motorized Roller Shades and CD 60
Aluminum Horizontal Blinds

Project: Hancock Bank Building, Gulfport, MS
Architect: Grace & Hebert Architects
Product: Manual Roller Shades

Project: Reflections at Bloomington Central,
Bloomington, MN
Architect: Elness Swenson Graham Architects with
architectsAlliance
Product: Motorized Roller Shades

Project: JPS Hospital, Fort Worth, TX
Product: 500+ Manual and Motorized Roller Shades

Project: Royal Caribbean, Springfield, OR
Architect: Workstage; Integrated Architects
Product: Roller Shades



Reflections at Bloomington Central



U.S. Citizenship & Immigration Services

ABOUT HUNTER DOUGLAS

For the last 60 years, we have been fortunate enough to help turn countless innovative sketches into innovative buildings. Architects and designers from around the world have taken advantage of Hunter Douglas' unmatched project development, service, and support. Chances are, you've seen more of Hunter Douglas than you think. Just look around. With major operation centers in North America, Europe, Latin America, Asia and Australia, we have contributed to thousands of high-profile installations, from retail and commercial facilities to major transit centers and government buildings. Not only are the world's architects and designers our partners, they're our inspiration. As they continue to raise the bar for excellence, we are creating projects to bring their visions to life.

COMMITMENT TO SUSTAINABILITY

From products, to processes, to philanthropy, environmental responsibility is a core Hunter Douglas value. We are the worldwide leader in creating innovative, energy-efficient window fashions. Our commitment to minimizing our own impact on the environment includes aggressive plans to reduce energy consumption by 15%, water usage by 40%, and overall carbon emissions by 20% over a three-year period.

FOR MORE INFORMATION

- 800.727.8953
- www.hunterdouglascontract.com/windowcoverings

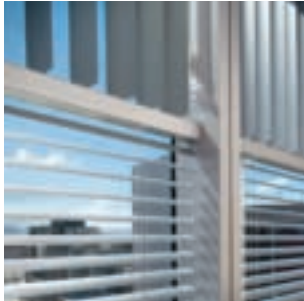
HunterDouglasContract

WINDOW COVERINGS

CEILING

SOLAR CONTROL

FAÇADES



Your local distributor:



Bartley Group, Inc.
YOUR SOLUTION!™

Contact us:

The Bartley Group Inc.

TollFree: +1 888 846 0029

Web: www.bartleygroupinc.com

E-mail: info@bartleygroupinc.com

This brochure was printed using:



30% Post Consumer Waste



Mixed Sources

Product group from well-managed forests, controlled sources and recycled wood or fiber.
www.fsc.org Cert no. BV-COC-080105
© 1996 Forest Stewardship Council



By using post consumer recycled fiber in lieu of virgin fiber paper stock:

10 trees were preserved for the future.

28 lbs. of water-borne waste were not created.

4,143 gallons of waste water flow were saved.

458 lbs. of solid waste were not generated.

903 lbs. of net greenhouse gases were prevented.

6,907,950 BTUs of energy were not consumed.

Hunter Douglas Contract Window Coverings
12250 Parkway Center Drive, Poway, CA 92064
Customer Service: 800.727.8953
Fax: 800.205.9819
www.hunterdouglascontract.com/windowcoverings

©2009 Hunter Douglas Inc.® and ™ is a trademark of Hunter Douglas Inc.

The GREENGUARD INDOOR AIR QUALITY CERTIFIED mark is a registered certification mark used under license through the GREENGUARD Environmental Institute.

