

# FR Aluminum Horizontal Blinds



**HunterDouglasContract**

WINDOW COVERINGS

Hunter Douglas created the industry's first **Aluminum Horizontal Blinds**, and we keep finding ways to make them better. Our spring-tempered aluminum slats offer best-in-class resilience to withstand the toughest treatment. We offer an innovative range of finishes and dozens of colors, including our Thermostop<sup>®</sup>, perforated, and mirror finishes.

2	SHADING STRATEGY
3	MOTORIZATION
4	BENEFITS
5	MODEL SELECTOR
6	MODEL CD
7	MODEL CL
8	MODEL CE
9	MODEL H2
10	DESIGN OPTIONS
12	PROJECT GALLERY







Front and inside cover: Pritzker Realty Group at Hyatt Center, Chicago, IL  
Architect: Dirk Denison Architects  
Product: FR Aluminum Horizontal Blinds



Hunter Douglas FR Aluminum Blinds help create environments that are comfortable, healthy, productive, and sustainable. Our products are constructed to minimize environmental impact while meeting the highest standards for industrial, institutional, and commercial applications.

## **A DAYLIGHT**

Contact with the outdoors is a proven factor in employee productivity. Windows offer views and admit plenty of daylight. When tilted, horizontal blinds can reflect that light deeper into a space, spreading the benefits among more people and reducing dependence on artificial lighting.

## **B GLARE CONTROL**

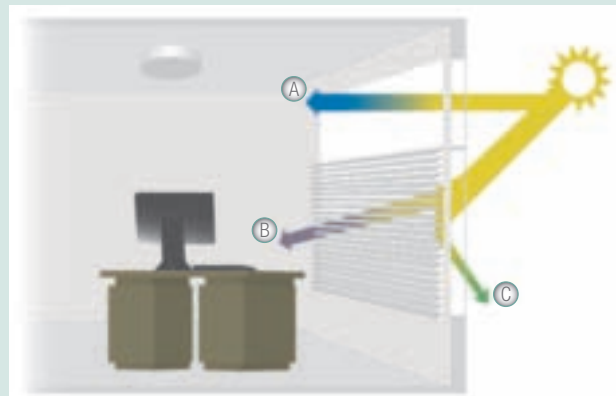
A range of slat spacings allows you to control how much light falls into a workspace, to eliminate glare and reflections. Perforation options help optimize use of natural light, ensuring visual comfort by reducing glare without blocking the view.

## **C MANAGEMENT OF THERMAL GAIN**

Window coverings manage heat generated by the sun: when it is hot, they can be closed to minimize solar heat gain; when cold, they can be raised to allow solar heating.

## **AESTHETICS**

Blinds filter daylight to create even, glare-free lighting levels within a space. They also ensure privacy and can provide a consistent look from the exterior of a building.



## **INDOOR AIR QUALITY**

Poor air quality is a common source of employee concerns. All the components and slats in our blinds – including paints and other finishes – are certified for low emissions by the GREENGUARD Environmental Institute. Hunter Douglas FR Aluminum Blinds pass both the standard emissions and the stricter requirements for GREENGUARD Children and Schools<sup>SM</sup> certification.



Hunter Douglas Contract provides flexible control of virtually any motorized product on projects of any size. Our state-of-the-art components can be mixed in a given installation without limitations. They offer advanced controls for the highest levels of function and reliability.

By responding to changing conditions, automated blinds deliver a number of important enhancements to building efficiency and performance:

#### **DYNAMIC MANAGEMENT OF THERMAL GAIN**

Intelligent automated systems can position blinds based on the orientation of the sun.

#### **INCREASED ENERGY EFFICIENCY**

Automated systems contribute to energy savings by managing the amount of light and heat that comes through the window. Using natural light instead of artificial lighting can lead to energy savings.

#### **AESTHETICS**

Automated blinds provide a uniform look to the exterior of a building.

#### **CONVENIENCE**

Motorized blinds provide greatly improved convenience for user operation, eliminating the need to manipulate cords or rods. In addition, automated shades can improve performance of the shading system as a whole, as studies show that most people do not open and close shades in response to changing conditions outside.



# Benefits



Our Aluminum Horizontal Blinds offer best-in-class durability, excellent value, reliable performance, and a wide range of options for commercial and contract applications.

#### **INNOVATIVE DURABILITY**

Bounceback slats with heat-treated, spring-tempered aluminum for best-in-class durability.

#### **RELIABLE HARDWARE**

Durable operating systems and slats ensure consistent performance.

#### **SUPERIOR LIGHT CONTROL**

A range of tape spacings, perforated slats, and our de-Light™ feature allow you to specify any level of light control.

#### **SUSTAINABLE CONSTRUCTION**

Slats contain 95% recycled aluminum and are certified for low emissions by the GREENGUARD Environmental Institute and passes the stricter requirements of GREENGUARD Children and Schools<sup>SM</sup>.

#### **ENERGY EFFICIENCY**

Tilted blinds diminish dependence on artificial lighting, allowing light to reflect deeper into a space. Thermostop® coatings reduce heat transfer by 30%, contributing to significant energy savings.

#### **UNMATCHED CUSTOMIZATION**

Variety of aesthetic and performance options for any application.

#### **LOW MAINTENANCE**

Proprietary anti-static Dust Shield® finish and closed oval bottom rail inhibit dust buildup.

#### **VERSATILE MOTORIZATION**

Range of motorization and control options to maximize shading benefits.

#### **COLORS AND FINISHES**

Durable aluminum alloy slats are available in a wide selection of colors.

#### **PRODUCT DETAILS**

Standard features include box brackets, crash-proof cord lock, closed oval bottom rail, cord stop to single pull cord, and slip clutch tilters.

#### **LIFETIME GUARANTEE**



## Model Selection

Aluminum horizontal blinds can be selected based on headrail dimensions, slat gauge, and tape spacing for individual projects.



## Headrail

Headrail styles differ based on functionality and aesthetics – from the decorative beveled CD, to the industry-standard CL, heavy-duty CE and sturdy H2.



## Slat Gauge

Heat treated, spring tempered aluminum slats are available in heavy-duty .008" gauge and industry standard .006" gauge.



## Tape Spacing

Tape spacing options offer various levels of light control and view through.

## Model Selector

MODEL	SLAT SIZE	TAPE SPACING
<b>CD 1"</b> <b>1 3/8" x 1 3/8" Decorative Beveled Headrail</b>		
CD60	1" x .006"	20mm
CD62	1" x .006"	22mm
CD80	1" x .008"	20mm
CD82	1" x .008"	22mm
CD88	1" x .008"	18mm de-Light™
<b>CL 1"</b> <b>1" x 1" Industry Standard Headrail</b>		
CL62	1" x .006"	22mm
CL82	1" x .008"	22mm
CHM82	5/8" x .008"	12mm
CX80	1" x .008"	20mm
<b>CE 1"</b> <b>1" x 1 1/2" Heavy Duty Headrail</b>		
CE60	1" x .006"	20mm
CE61	1" x .006"	22mm
CE80	1" x .008"	20mm
CE81	1" x .008"	22mm
<b>H2 2"</b> <b>1 1/2" x 2 1/4" Sturdy Headrail</b>		
H200	2" x .008"	42mm Standard
H282	2" x .008"	42mm de-Light™
H2TN	2" x .008"	42mm School Blind



## Model CD 1" Decorative Beveled Headrail



Superb design, excellent value, and resilient construction make CD blinds an ideal choice for many architects, specifiers, and designers. The attractive design of the beveled steel headrail eliminates the need for a separate valance. Model CD88 features heavy-duty 1" x .008" slats, as well as our highest level of light control with tape spacing at just 18mm and de-Light™ feature to eliminate light leakage through routing holes.

### Product Details

- Headrail 1 3/8"
- Aluminum alloy slats, heat treated and spring tempered
- Slip clutch tilter
- Widths 10 1/2" – 144" \*
- Heights to 144" \*\*
- Braided Ladders: 100% polyester yarn color compatible with slats \*\*
- Designer headrail (no valance needed)
- Box brackets
- Crash proof cord lock
- Closed oval bottom rail
- Cord stop to single pull cord

\* Minimum widths between 8 1/2" IB (8" OB) & 10 1/2" available. Surcharges and guarantee exclusions apply.

\*\* Heights in excess of 144" available. Surcharges and guarantee exclusions apply.

### Model Selector

MODEL	SLAT SIZE	TAPE SPACING	LIGHT CONTROL
CD60 1"	.006"	20 mm	Superior
CD62 1"	.006"	22 mm	Industry standard
CD80 1"	.008"	20 mm	Superior
CD82 1"	.008"	22 mm	Industry standard
CD88 1"	.008"	18 mm	Ultimate, de-Light™ feature

### Design Options

Hidden brackets, limited tilt to control closure, motorization, perforated slat (.008" only).



## Model CL 1" Industry Standard Headrail



A proven performer for contract and commercial applications, the CL aluminum horizontal blind is often specified as the industry standard. The sturdy 1" x 1" x .024" steel headrail accommodates narrow mounting depths. Model CX80 provides superior light control with 20mm tape spacing and heavy-duty 1" x .008" slats. With its 5/8" slats, the CHM82 micro aluminum horizontal blind offers a distinctly different look.

### Product Details

- Headrail 1" x 1"
- Aluminum alloy slats, heat treated and spring tempered
- Slip clutch tilter
- Widths 10½" – 144" \* (CHM82 TO 120")
- Heights to 144" \*\* (CHM82 to 108")
- Braided Ladders: 100% polyester yarn color compatible with slats \*\*
- Box brackets
- Crash proof cord lock
- Closed oval bottom rail
- Cord stop to single pull cord

\* Minimum widths between 8½" IB (8" OB) & 10½" available. Surcharges and guarantee exclusions apply.

\*\* Heights in excess of 144" available. Surcharges and guarantee exclusions apply.

### Model Selector

MODEL	SLAT SIZE	TAPE SPACING	LIGHT CONTROL
CL62 1"	.006"	20 mm	Industry standard
CL82 1"	.008"	22 mm	Industry standard
CHM82 5/8"	.008"	12 mm	Good
CX80 1"	.008"	20 mm	Superior Light Control

### Design Options

Custom brackets with pivot plates, custom valance, limited tilt to control closure, perforated slat (.008" only), pocket bracket, two position cord lock with ring pull (right hand only).

## Model CE 1" Heavy Duty Headrail



Ideal for larger installations, our CE aluminum horizontal blinds feature our sturdiest headrail for 1" blinds. The steel headrail measures 1" x 1½", offering extra durability for openings up to 144" x 144". This blind's distinctive look and solid hardware ensure years of reliable service without sacrificing aesthetics. Model CE80 provides superior light control with tighter 20mm tape spacing and heavy-duty 1" x .008" slats.

### Product Details

- Headrail 1" x 1½"
- Aluminum alloy slats, heat treated and spring tempered
- Slip clutch tilter
- Widths 10½" – 144" \*
- Heights to 144" \*\*
- Braided Ladders: 100% polyester yarn color compatible with slats \*\*
- Box brackets
- Crash proof cord lock
- Closed oval bottom rail
- Cord stop to single pull cord

\* Minimum widths between 8½" IB (8" OB) & 10½" available. Surcharges and guarantee exclusions apply.

\*\* Heights in excess of 144" available. Surcharges and guarantee exclusions apply.

### Model Selector

MODEL	SLAT SIZE	TAPE SPACING	LIGHT CONTROL
CE60 1"	.006"	20 mm	Superior
CE61 1"	.006"	22 mm	Industry standard
CE80 1"	.008"	20 mm	Superior
CE81 1"	.008"	22 mm	Industry standard

### Design Options

Custom valance, limited tilt to control closure, motorization, perforated slat (.008" only), pivot plates, two position cord lock with ring pull (right hand only).

## Model H2 2" Sturdy Headrail



Offering maximum strength and retro styling, our H2 blinds give the traditional look of 2" slats. The H2TN (School Blind) is optimized for the design and durability requirements of academic institutions, with sturdy vinyl tapes, 2.2mm cords, and cord tilt. The blind features heavy-duty slats of .008" aluminum and a low-profile steel headrail measuring 1 1/2" x 2 1/4" x .024". For details on shading benefits in schools go to [www.hunterdouglascontract.com/education](http://www.hunterdouglascontract.com/education).

### Product Details

- Headrail 1 1/2" x 2 1/4"
- Aluminum alloy slats, heat treated and spring tempered
- Widths 10 1/2" – 144" \*
- Heights to 144" \*\*
- Ladders tapes in vinyl, polyester or cloth
- Box brackets
- Crash proof cord lock
- Closed oval bottom rail
- Cord stop to single pull cord

\* Minimum widths between 8 1/2" IB (8" OB) & 10 1/2" available. Surcharges and guarantee exclusions apply.

\*\* Heights in excess of 144" available. Surcharges and guarantee exclusions apply.

### Model Selector

MODEL	SLAT SIZE	TAPE SPACING	LIGHT CONTROL
H200 2"	.008"	42 mm	Superior
H2TN 2"	.008"	42 mm	Superior
H282 2"	.008"	42 mm	Ultimate, de-Light™ feature

### Design Options

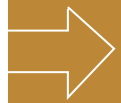
Custom valance, de-Light™ feature (H282), motorization.



## Design Options

Hunter Douglas Contract aluminum blinds meet even the most demanding requirements of office, school, and commercial environments. Our blinds feature a wide range of design options to meet your needs.





## Limited Tilt

Available on CL, CD and CE blinds

- Maintains uniform look from exterior
- Reduces thermal stress in glass glazing systems
- Allows proper clutch-tilter operation to stop over-rotation, damage to blind
- Available in 60/60 degrees equal tilt



## Pivot Plates

Available on CL and CE blinds

- Eliminate the need to drill and screw directly into the mullion
- Allows headrail installation into recessed mullion cavity



## Pocket Brackets

Available on CL blinds

- Hide brackets once mounted
- Specified for ceiling pockets without mullions
- Uses spring-loaded brackets



## Perforated Slats

Available on CL, CD and CE blinds

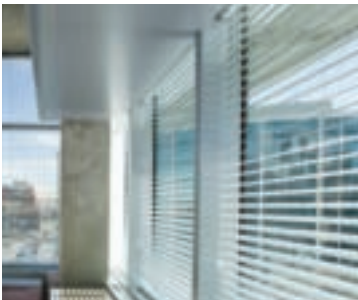
- Provide privacy while preserving an outside view
- Feature a 7% openness factor
- Available with all slat colors



## Two-Position Cord Lock

Available on CL and CE blinds

- Restricts blinds to only two settings – fully raised or fully lowered
- Assures uniform exterior appearance
- Eases window maintenance
- Includes ring-pull assembly



## Motorization

Available on CD, CE, and H2 blinds

- Reliable mechanisms
- Motors open, close, and tilt slats



EPA Region 8 Headquarters

### RELATED PROJECTS LIST

Project: EPA Region 8 Headquarters, Denver, CO  
Architect: Zimmer Gunsul Frasca Architects LLP/Opus A&E, Inc.  
Product: H200 Aluminum Horizontal Blinds, Motorized and Vertical Blinds

Project: The Clare at Watertower, Chicago, IL  
Dealer: Indecor Inc.  
Product: CL62 FR Aluminum Horizontal Blinds

Project: The Metropolitan Midtown, Charlotte, NC  
Dealer: The Blind Man of North Carolina  
Product: CD80 FR Aluminum Horizontal Blinds

Project: Gianna  
Dealer: Drapery House  
Product: H200 FR Aluminum Horizontal Blinds

Project: Bel Air High School, Bel Air, MD  
Dealer: M & B Contract Specialties  
Product: CD80 FR Aluminum Horizontal Blinds

Project: Federal Reserve Bank, Kansas City, MO  
Dealer: Mike Bono  
Product: FR Aluminum Horizontal Blinds

Project: Great River Energy, Maple Grove, MN  
Dealer: Aero Drapery  
Product: FR Aluminum Horizontal Blinds, Perforated

Project: Opus Corporate Expansion, Minnetonka, MN  
Dealer: Custom Expression  
Product: CD 80 FR Aluminum Horizontal Blinds

Project: Pritzker Realty Group at Hyatt Center, Chicago, IL  
Architect: Dirk Denison Architects  
Product: FR Aluminum Horizontal Blinds

Project: Northeastern University, Boston, MA  
Dealer: Ver-Tex  
Product: CD80 FR Aluminum Horizontal Blinds

Project: U.S. Citizenship and Immigration Services, Irving, TX  
Architect: 4240 Architecture  
Product: Manual and Motorized Roller Shades and CD 60 FR Aluminum Horizontal Blinds





U.S. Citizenship & Immigration Services



Pritzker Realty Group at Hyatt Center, Chicago, IL

## ABOUT HUNTER DOUGLAS

For the last 60 years, we have been fortunate enough to help turn countless innovative sketches into innovative buildings. Architects and designers from around the world have taken advantage of Hunter Douglas' unmatched project development, service, and support. Chances are, you have seen more of Hunter Douglas than you think. Just look around. With major operation centers in North America, Europe, Latin America, Asia and Australia, we've contributed to thousands of high-profile installations, from retail and commercial facilities to major transit centers and government buildings. Not only are the world's architects and designers our partners, they are our inspiration. As they continue to raise the bar for excellence, we're creating projects to bring their visions to life.

## COMMITMENT TO SUSTAINABILITY

From products, to processes, to philanthropy, environmental responsibility is a core Hunter Douglas value. We are the worldwide leader in creating innovative, energy-efficient window fashions. Our commitment to minimizing our own impact on the environment includes aggressive plans to reduce energy consumption by 15%, water usage by 40%, and overall carbon emissions by 20% over a three-year period.

## FOR MORE INFORMATION

- 800.727.8953
- [www.hunterdouglascontract.com/windowcoverings](http://www.hunterdouglascontract.com/windowcoverings)

# HunterDouglasContract

WINDOW COVERINGS

CEILING

SOLAR CONTROL

FAÇADES



Your local distributor:



**Bartley Group, Inc.**

YOUR SOLUTION!™

Contact us:

The Bartley Group Inc.

TollFree: +1 888 846 0029

Web: [www.bartleygroupinc.com](http://www.bartleygroupinc.com)

E-mail: [info@bartleygroupinc.com](mailto:info@bartleygroupinc.com)

This brochure was printed using:



30% Post Consumer Waste



**Mixed Sources**

Product group from well-managed forests, controlled sources and recycled wood or fiber  
[www.fsc.org](http://www.fsc.org) Cert no. BV-COC-080105  
© 1996 Forest Stewardship Council



By using post consumer recycled fiber in lieu of virgin fiber paper stock:

10 trees were preserved for the future.

28 lbs. of water-borne waste were not created.

4,143 gallons of waste water flow were saved.

458 lbs. of solid waste were not generated.

903 lbs. of net greenhouse gases were prevented.

6,907,950 BTUs of energy were not consumed.

Hunter Douglas Contract Window Coverings  
12250 Parkway Center Drive, Poway, CA 92064  
Customer Service: 800.727.8953  
Fax: 800.205.9819  
[www.hunterdouglascontract.com/windowcoverings](http://www.hunterdouglascontract.com/windowcoverings)

©2009 Hunter Douglas Inc.® and ™ is a trademark of Hunter Douglas Inc.

The GREENGUARD INDOOR AIR QUALITY CERTIFIED mark is a registered certification mark used under license through the GREENGUARD Environmental Institute.

