

Fabric Selector



FABRIC COLLECTION INDEX

FABRIC NAME	MAX WIDTH*	CONTENT	OPENNESS FACTOR	PAGE
GreenScreen X-Lite	118"	100% polyester (PVC-free)	0%	78
GreenScreen Eco	118"	100% polyester (PVC-free)	3%	79
Flocke	78"	51% acrylic, 42% fiberglass, 7% cotton flocked backing	0%	80
Morocco	72"	100% fiberglass with vinyl laminates	0%	81
Pima	72"	100% cotton with vinyl coating	0%	82
Sheerweave 7000	94"	100% polyester with acrylic foamed backing (PVC-free)	0%	83
Sheerweave 7100	72"	PVC coated fiberglass laminated with 2-ply 100% PVC blackout film	0%	84
E Screen 7501	98"	64% vinyl, 36% fiberglass	1%	85
GlacierScreen HD2001	118"	78% vinyl, 22% polyester	1%	86
Sheerweave 2500	98"	65% PVC, 35% fiberglass	1%	87
Sheerweave 2701	98"	64% PVC, 36% fiberglass	1%	88
Sheerweave 4800	96"	76% PVC on polyester, 24% polyester	1%	89
E Screen 7503	98"	64% vinyl, 36% fiberglass	3%	90
GlacierScreen HD1003	118"	78% vinyl, 22% polyester	3%	91
GlacierScreen HD2003	118"	78% vinyl, 22% polyester	3%	92
M Screen 8503	98"	64% vinyl, 36% fiberglass	3%	93
Sheerweave 2410	98"	65% PVC on fiberglass, 35% fiberglass	3%	95
Sheerweave 2703	98"	64% PVC, 36% fiberglass	3%	96
Sheerweave 4400	98"	75% PVC on polyester, 25% polyester	3%	97
Sheerweave 4600	98"	78% PVC on polyester, 22% polyester	3%	98
Sheerweave 4650	98"	83% PVC on polyester, 17% polyester	3%	99
Star 2115	98"	66% PVC, 34% fiberglass	4%	100
E Screen 7505	96"	64% vinyl, 36% fiberglass	5%	101
GlacierScreen HD1005	118"	78% vinyl, 22% polyester	5%	102
M Screen 8505	98"	64% vinyl, 36% fiberglass	5%	103
M Screen Deco	98"	64% vinyl, 36% fiberglass	5%	105
Sheerweave 2000	96"	63% PVC on fiberglass, 37% fiberglass	5%	106
Sheerweave 2390	98"	65% PVC on fiberglass, 35% fiberglass	5%	107
Sheerweave 2705	98"	64% PVC, 36% fiberglass	5%	108
Sheerweave 4000	98"	75% PVC on polyester, 25% polyester	5%	109
Sheerweave 4500	98"	83% PVC on polyester, 17% polyester	5%	110
Sheerweave 4550	98"	83% PVC on polyester, 17% polyester	5%	111
Sheerweave 5000	74"	72% PVC on polyester, 28% polyester	5% – 10%	112
E Screen 7510	98"	64% vinyl, 36% fiberglass	10%	113
GlacierScreen HD1010	118"	78% vinyl, 22% polyester	10%	114
New Orleans	98"	66% PVC, 34% fiberglass	10%	115
Sheerweave 2100	96"	63% PVC on fiberglass, 37% fiberglass	10%	116
Sheerweave 2360	98"	63% PVC on fiberglass, 37% fiberglass	10%	117
Sheerweave 2710	98"	64% PVC, 36% fiberglass	10%	118
Sheerweave 4100	98"	75% PVC on polyester, 25% polyester	10%	119
Sheerweave 3000	96"	65% PVC on fiberglass, 35% fiberglass; 69% PVC on polyester, 31% polyester	14%	120

For additional fabric specification and fenestration information, see individual fabric selector pages.

*Some fabrics/colors may be available in wider widths. Contact Hunter Douglas Contract at 800.727.8953 or visit our website at www.hunterdouglascontract.com/window-coverings for complete maximum fabric width information.

Note: The digital colors throughout this catalog may vary from the actual material. Call 800.727.8953 for fabric samples.

ADDITIONAL FABRIC INFORMATION

FABRIC NAME	MIN WIDTH	MAX WIDTH*	MAX HEIGHT	MAX WIDTH TURNED	MAX HEIGHT TURNED WITHOUT SEAM	MAX WIDTH RAILROAD	MAX HEIGHT RAILROAD WITH SEAM	WEIGHT (OZ/YD ²)	FABRIC CAN BE SEALED (HEMBARS) Y/N
GreenScreen X-Lite	12"	118"	192"	192"	104"	NA	NA	8.85	N**
GreenScreen Eco	12"	118"	192"	192"	104"	NA	NA	4.71	N**
Flocke	12"	78"	192"	192"	64"	192"	144"	12.3-14.7	Y
Morocco	12"	72"	192"	192"	58"	192"	144"	14	Y
Pima	12"	72"	192"	NA	NA	NA	NA	6	N**
Sheerweave 7000	12"	94"	192"	192"	80"	192"	144"	10	Y
Sheerweave 7100	12"	72"	192"	192"	58"	192"	144"	19.8	Y
E Screen 7501	12"	98"	192"	192"	84"	192"	144"	13.3	Y
GlacierScreen HD2001	12"	118"	192"	192"	70"	192"	144"	14.9	Y
Sheerweave 2500	12"	98"	192"	192"	84"	192"	144"	16.1	Y
Sheerweave 2701	12"	98"	192"	192"	84"	192"	144"	14.6	Y
Sheerweave 4800	12"	96"	192"	144"	82"	144"	144"	18.5	Y
E Screen 7503	12"	98"	192"	192"	84"	192"	144"	12.3	Y
GlacierScreen HD1003	12"	118"	192"	192"	70"	192"	144"	14.6	Y
GlacierScreen HD2003	12"	118"	192"	192"	70"	192"	144"	13.3	Y
M Screen 8503	12"	98"	192"	192"	84"	192"	144"	12.7	Y
Sheerweave 2410	12"	98"	192"	192"	84"	192"	144"	13.9	Y
Sheerweave 2703	12"	98"	192"	192"	84"	192"	144"	14	Y
Sheerweave 4400	12"	98"	192"	144"	84"	144"	144"	20.7	Y
Sheerweave 4600	12"	98"	192"	144"	84"	144"	144"	17.4	Y
Sheerweave 4650	12"	98"	192"	144"	84"	144"	144"	13.3	Y
Star 2115	12"	98"	192"	192"	84"	192"	144"	12.38	Y
E Screen 7505	12"	96"	192"	192"	82"	192"	144"	12.01	Y
GlacierScreen HD1005	12"	118"	192"	192"	70"	192"	144"	14.6	Y
M Screen 8505	12"	98"	192"	192"	84"	192"	144"	11.9	Y
M Screen Deco	12"	98"	192"	192"	84"	192"	144"	11.3	Y
Sheerweave 2000	12"	96"	192"	192"	82"	192"	144"	14.26	Y
Sheerweave 2390	12"	98"	192"	192"	84"	192"	144"	11.9	Y
Sheerweave 2705	12"	98"	192"	192"	84"	192"	144"	11.8	Y
Sheerweave 4000	12"	98"	192"	144"	84"	144"	144"	19.2	Y
Sheerweave 4500	12"	98"	192"	144"	84"	144"	144"	14.4	Y
Sheerweave 4550	12"	98"	192"	144"	84"	144"	144"	12.5	Y
Sheerweave 5000	12"	74"	192"	192"	60"	192"	144"	14.5	Y
E Screen 7510	12"	98"	192"	192"	84"	192"	144"	10.3	Y
GlacierScreen HD1010	12"	118"	192"	192"	70"	192"	144"	16.3	Y
New Orleans	12"	98"	192"	192"	84"	192"	144"	11.79	Y
Sheerweave 2100	12"	96"	192"	192"	82"	192"	144"	12.4	Y
Sheerweave 2360	12"	98"	192"	192"	84"	192"	144"	10.5	Y
Sheerweave 2710	12"	98"	192"	192"	84"	192"	144"	10.4	Y
Sheerweave 4100	12"	98"	192"	144"	84"	144"	144"	17.5	Y
Sheerweave 3000	12"	96"	192"	192"	82"	192"	144"	13.46	Y

*Some fabrics/colors may be available in wider widths. Contact Hunter Douglas Contract at 800.727.8953 or visit our website at www.hunterdouglascontract.com/windowcoverings for complete maximum fabric width information.

**Fabric-covered bottom bar, flat or oval.

The fenestration data provided in this fabric selector are derived from information provided by Hunter Douglas' vendors and/or testing conducted by Hunter Douglas or its vendors. Test methods used are intended to demonstrate the qualities and performance of the specific fabric samples tested, and the data may not reflect or predict the qualities or performance of the fabrics under actual conditions. In addition, tests may not have been conducted by certified or governmentally approved testing facilities and, accordingly, the results may vary from those that would be obtained at such certified or approved facilities. Hunter Douglas assumes no liability to its customer or any other person or entity whatsoever arising out of any loss or damage suffered or sustained, or for any amounts required to be paid, as a result of the performance (or nonperformance) of the fabric under actual conditions.

GreenScreen X-Lite | 0% openness



Specifications

MAX. FABRIC WIDTH: 118"
 ROLL LENGTH: 27.3 yd
 FABRIC WEIGHT: 8.85 oz/yd²
 FABRIC THICKNESS: 0.015"

OPENNESS FACTOR: 0%
 COMPOSITION: 100% polyester (PVC-free); polyurethane finish
 FIRE CLASSIFICATION: NFPA 701-99 (small scale) M1, B1

COLOR	SOLAR OPTICAL PROPERTIES						SHADING COEFFICIENT (INTERNAL)		
	TS	RS	AS	Tuv	Tv	O-F	1/8CL	1/4CL	1/4HA
White	0	61	38	0	0	0	0.32	0.32	0.31
Antique White	0	61	38	0	0	0	0.32	0.32	0.31
Beige	0	61	38	0	0	0	0.32	0.32	0.31
Gray	0	61	38	0	0	0	0.32	0.32	0.31
Dark Gray	0	61	38	0	0	0	0.32	0.32	0.31
Bronze	0	61	38	0	0	0	0.32	0.32	0.31
Charcoal	0	61	38	0	0	0	0.32	0.32	0.31

TS Solar Transmittance
RS Solar Reflectance
AS Solar Absorptance
Tuv Ultraviolet Transmittance
TV Visual Transmittance
O-F Openness Factor

1/8 CL 1/8" Clear Glass
1/4 CL 1/4" Clear Glass
1/4 HA 1/4" Heat Absorbing Glass

- The solar optical properties are used to calculate the shading coefficient.
- The shading coefficient represents the percentage of solar heat gain that is transmitted to the interior through the glass and shading system. Darker colors provide maximum glare reduction and visibility.



Specifications

MAX. FABRIC WIDTH:	118"	OPENNESS FACTOR:	3%
ROLL LENGTH:	54.6 yd	COMPOSITION:	100% polyester (PVC-free)
FABRIC WEIGHT:	4.71 oz/yd ²	FIRE CLASSIFICATION:	NFPA 701-99 (small scale)
FABRIC THICKNESS:	0.015"		

COLOR	SOLAR OPTICAL PROPERTIES						SHADING COEFFICIENT (INTERNAL)		
	TS	RS	AS	Tuv	Tv	O-F	1/8CL	1/4CL	1/4HA
White	47	44	9	15	39	3	0.57	0.55	0.44
Linen	45	42	13	14	35	4	0.58	0.56	0.44
Pearl/Linen	39	39	22	13	26	4	0.58	0.56	0.44
Pearl	39	39	22	13	27	3	0.58	0.56	0.44
Pewter	30	32	38	8	11	3	0.61	0.58	0.45
Charcoal/Bronze	24	28	48	5	7	3	0.62	0.59	0.46
Charcoal	25	29	46	6	6	3	0.62	0.59	0.46

TS Solar Transmittance
RS Solar Reflectance
AS Solar Absorptance
Tuv Ultraviolet Transmittance
Tv Visual Transmittance
O-F Openness Factor
1/8 CL 1/8" Clear Glass
1/4 CL 1/4" Clear Glass
1/4 HA 1/4" Heat Absorbing Glass

- The solar optical properties are used to calculate the shading coefficient.
- The shading coefficient represents the percentage of solar heat gain that is transmitted to the interior through the glass and shading system. Darker colors provide maximum glare reduction and visibility.



Specifications

MAX. FABRIC WIDTH: 78"
ROLL LENGTH: 30 yd
FABRIC WEIGHT: 12.3 oz/yd² – 606, 614
 14.7 oz/yd² – 600, 623, 618, 603, 625, 626, 608, 609, 615
FABRIC THICKNESS: 0.020" – 606, 614
 0.022" – 600, 623, 618, 603, 625, 626, 608, 609, 615
OPENNESS FACTOR: 0% (total blackout)

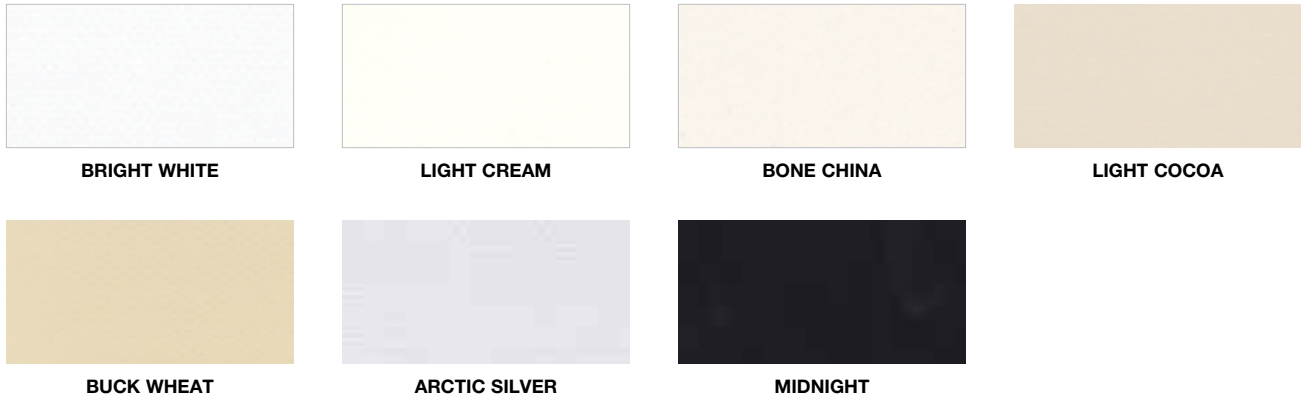
COMPOSITION: 51% acrylic, 42% fiberglass, 7% cotton flocked backing
UV BLOCKAGE: 100%
FIRE CLASSIFICATION: NFPA 701 (small scale) California Title 19, ASTME-84, M1, B1
BREAKING STRENGTH: warp 305 lbs weft 197 lbs
STRETCH: warp <5% weft <5%

COLOR	SOLAR OPTICAL PROPERTIES				SHADING COEFFICIENT		
	TS	RS	AS	TV	SINGLE		
					1/8 CL	1/4 CL	1/4 HA
BLANC	0	69	31	0	0.27	0.28	0.29
NOIR	0	68	32	0	0.28	0.28	0.29
ALL OTHER COLORS	*	*	*	*	*	*	*

* Test results not yet available.

TS Solar Transmittance
RS Solar Reflectance
AS Solar Absorptance
TV Visual Transmittance
1/8 CL 1/8" Clear Glass
1/4 CL 1/4" Clear Glass
1/4 HA 1/4" Heat Absorbing Glass

- The solar optical properties are used to calculate the shading coefficient.
- The shading coefficient represents the percentage of solar heat gain that is transmitted to the interior through the glass and shading system. Darker colors provide maximum glare reduction and visibility.



Specifications

MAX. FABRIC WIDTH:	72"	COMPOSITION:	100% fiberglass with vinyl laminates
ROLL LENGTH:	30 yd	FIRE CLASSIFICATION:	NFPA 701, CCC-C-521E (type 11 fiberglass) A-A150
FABRIC WEIGHT:	14 oz/yd ²		
FABRIC THICKNESS:	0.012"		
OPENNESS FACTOR:	0% (room darkening)		

COLOR	SOLAR OPTICAL PROPERTIES				SHADING COEFFICIENT		
	TS	RS	AS	TV	SINGLE		
					1/8 CL	1/4 CL	1/4 HA
ALL COLORS	*	*	*	*	*	*	*

* Test results not yet available.

TS Solar Transmittance **1/8 CL** 1/8" Clear Glass
RS Solar Reflectance **1/4 CL** 1/4" Clear Glass
AS Solar Absorptance **1/4 HA** 1/4" Heat Absorbing Glass
TV Visual Transmittance

- The solar optical properties are used to calculate the shading coefficient.
- The shading coefficient represents the percentage of solar heat gain that is transmitted to the interior through the glass and shading system. Darker colors provide maximum glare reduction and visibility.

Pima | 0% openness



BRIGHT WHITE



LINEN



BAMBOO



BEACH SHELLS



BARLEY

Specifications

MAX. FABRIC WIDTH: 72"
 ROLL LENGTH: 30 yd
 FABRIC WEIGHT: 6 oz/yd²
 FABRIC THICKNESS: 0.010"
 OPENNESS FACTOR: 0%

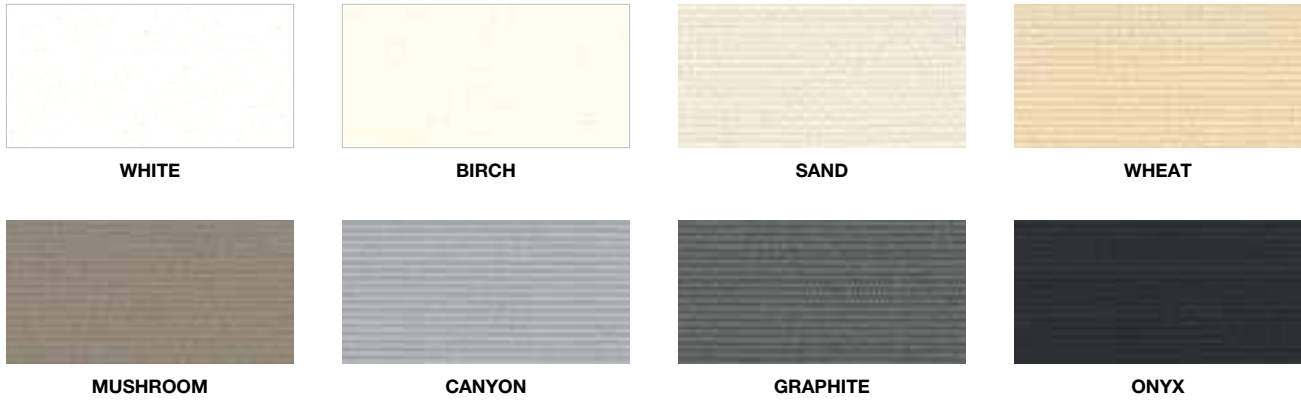
COMPOSITION: 100% cotton with vinyl coating
 FIRE CLASSIFICATION: NFPA 701 (small scale), CCC-C-521E

COLOR	SOLAR OPTICAL PROPERTIES				SHADING COEFFICIENT		
	TS	RS	AS	TV	SINGLE		
					1/8 CL	1/4 CL	1/4 HA
ALL COLORS	*	*	*	*	*	*	*

* Test results not yet available.

TS Solar Transmittance **1/8 CL** 1/8" Clear Glass
RS Solar Reflectance **1/4 CL** 1/4" Clear Glass
AS Solar Absorptance **1/4 HA** 1/4" Heat Absorbing Glass
TV Visual Transmittance

- The solar optical properties are used to calculate the shading coefficient.
- The shading coefficient represents the percentage of solar heat gain that is transmitted to the interior through the glass and shading system. Darker colors provide maximum glare reduction and visibility.



Specifications

MAX. FABRIC WIDTH: 94"
ROLL LENGTH: 30 yd
FABRIC WEIGHT: 10.0 oz/yd²
FABRIC THICKNESS: 0.018"
OPENNESS FACTOR: 0%
COMPOSITION: 100% polyester with acrylic foamed cream-colored backing

UV BLOCKAGE: 90% – 95%
FIRE CLASSIFICATION: NFPA 701-99 TM#1 (small scale), California Title 19 (small scale), British Standard
BREAKING STRENGTH: warp 205 lbs
 fill 225 lbs

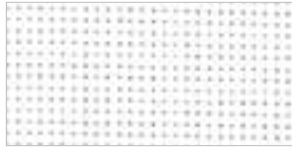
COLOR	SOLAR OPTICAL PROPERTIES				SHADING COEFFICIENT WITH					
	TS	RS	AS	TV	SINGLE			INSULATING		
					1/8CL	1/4CL	1/4HA	1/2 CL	1CL	1HA
WHITE	0	64	36	0	0.31	0.31	0.3	*	0.3	0.24
ONYX	0	64	36	0	0.31	0.31	0.3	*	0.3	0.24
ALL OTHER COLORS	*	*	*	*	*	*	*	*	*	*

*Test results not yet available.

TS Solar Transmittance **1/8 CL** 1/8" Clear Glass
RS Solar Reflectance **1/4 CL** 1/4" Clear Glass
AS Solar Absorptance **1/4 HA** 1/4" Heat Absorbing Glass
TV Visual Transmittance

- The solar optical properties are used to calculate the shading coefficient.
- The shading coefficient represents the percentage of solar heat gain that is transmitted to the interior through the glass and shading system. Darker colors provide maximum glare reduction and visibility.

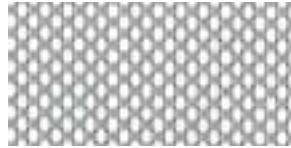
SheerWeave 7100 | 0% openness



WHITE



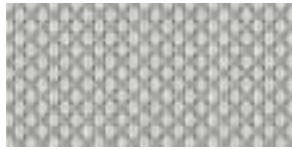
WHITE/BONE



WHITE/PLATINUM



BONE



BONE/PLATINUM



CHARCOAL

Specifications

MAX. FABRIC WIDTH: 72"
ROLL LENGTH: 30 yd
FABRIC WEIGHT: 19.8 oz/yd²
FABRIC THICKNESS: 0.023"
OPENNESS FACTOR: 0%
COMPOSITION: PVC coated fiberglass laminated with 2-ply 100% PVC blackout film white backing

FIRE CLASSIFICATION: NFPA 701-99 TM#1, California Title 19
BREAKING STRENGTH: warp 253 lbs
 fill 263 lbs

COLOR	SOLAR OPTICAL PROPERTIES				SHADING COEFFICIENT WITH					
	TS	RS	AS	TV	SINGLE			INSULATING		
					1/8 CL	1/4 CL	1/4 HA	1/2 CL	1 CL	1 HA
WHITE	0	71	29	0	0.25	0.26	0.28	*	0.26	0.22
CHARCOAL	0	69	31	0	0.27	0.28	0.29	*	0.28	0.23
ALL OTHER COLORS	*	*	*	*	*	*	*	*	*	*

*Test results not yet available.

TS Solar Transmittance **1/8 CL** 1/8" Clear Glass
RS Solar Reflectance **1/4 CL** 1/4" Clear Glass
AS Solar Absorptance **1/4 HA** 1/4" Heat Absorbing Glass
TV Visual Transmittance

- The solar optical properties are used to calculate the shading coefficient.
- The shading coefficient represents the percentage of solar heat gain that is transmitted to the interior through the glass and shading system. Darker colors provide maximum glare reduction and visibility.

E Screen 7501 | 1% openness

Fabric is also available in: 3% openness (see E Screen 7503, page 90)
 5% openness (see E Screen 7505, page 101)
 10% openness (see E Screen 7510, page 113)



WHITE / WHITE



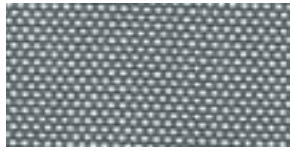
WHITE / LINEN



LINEN / LINEN



WHITE / PEARL



GRAY / WHITE



GRAY / GRAY



CHARCOAL / GRAY



CHARCOAL / BRONZE



CHARCOAL / CHARCOAL

Specifications

MAX. FABRIC WIDTH: 98.4"
 ROLL LENGTH: 30 yd
 FABRIC WEIGHT: 13.3 oz/yd²
 FABRIC THICKNESS: 0.020"
 OPENNESS FACTOR: 1%
 COMPOSITION: 64% vinyl, 36% fiberglass

UV BLOCKAGE: 99%
 FIRE CLASSIFICATION: NFPA 701-04 TM#1, California Title 19
 BREAKING STRENGTH: warp > 280 lbs
 weft > 250 lbs
 YARN DIAMETER: warp 26 ends/in
 weft 19.5 ends/in

COLOR	SOLAR OPTICAL PROPERTIES				SHADING COEFFICIENT WITH					
	TS	RS	AS	TV	SINGLE			INSULATING		
					1/8 CL	1/4 CL	1/4 HA	1/2 CL	1 CL	1 HA
WHITE/WHITE	17	68	15	15	*	0.32	0.31	*	*	*
WHITE/LINEN	18	60	22	13	*	0.38	0.34	*	*	*
LINEN/LINEN	17	52	31	11	*	0.43	0.37	*	*	*
WHITE/PEARL	10	52	38	8	*	0.41	0.36	*	*	*
GRAY/WHITE	6	33	61	3	*	0.52	0.42	*	*	*
GRAY/GRAY	4	19	77	2	*	0.60	0.46	*	*	*
CHARCOAL/GRAY	1	9	90	1	*	0.66	0.49	*	*	*
CHARCOAL/BRONZE	1	6	93	1	*	0.68	0.50	*	*	*
CHARCOAL/CHARCOAL	1	5	94	1	*	0.68	0.50	*	*	*

* Test results not yet available.

TS Solar Transmittance **1/8 CL** 1/8" Clear Glass
RS Solar Reflectance **1/4 CL** 1/4" Clear Glass
AS Solar Absorptance **1/4 HA** 1/4" Heat Absorbing Glass
TV Visual Transmittance

- The solar optical properties are used to calculate the shading coefficient.
- The shading coefficient represents the percentage of solar heat gain that is transmitted to the interior through the glass and shading system. Darker colors provide maximum glare reduction and visibility.

GlacierScreen HD2001 | 1% openness

Fabric is also available in:
3% openness (see GlacierScreen HD2003, page 92)



WHITE / WHITE



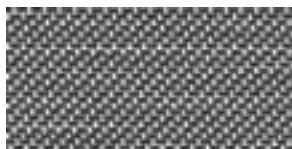
WHITE / LINEN



WHITE / SAND



WHITE / BRONZE



WHITE / BLACK

Specifications

MAX. FABRIC WIDTH: 118"
ROLL LENGTH: 32.8 yd
FABRIC WEIGHT: 14.9 oz/yd²
FABRIC THICKNESS: 0.0268"
OPENNESS FACTOR: 1%

COMPOSITION: 78% vinyl, 22% polyester
FIRE CLASSIFICATION: NFPA 701-99 (small scale),
Silver nano sterilization verified
for anti-microbial performance

COLOR	SOLAR OPTICAL PROPERTIES						SHADING COEFFICIENT WITH INSULATING			
	Ts	Rs	As	Tuv	Tv	O-F	1/8CL	1/4CL	1/4HA	
WHITE / WHITE	20	64	16	1	13	< 0.5%	0.36	0.36	0.33	
WHITE / LINEN	LIGHT SIDE	18	62	20	1	12	1	0.37	0.37	0.34
	DARK SIDE	18	59	23	1	12	1	0.39	0.38	0.35
WHITE / SAND	LIGHT SIDE	14	59	27	1	8	< 0.5%	0.38	0.38	0.34
	DARK SIDE	14	47	39	1	8	< 0.5%	0.46	0.45	0.38
WHITE / BRONZE	LIGHT SIDE	7	52	41	1	5	< 0.5%	0.41	0.40	0.35
	DARK SIDE	7	29	64	1	5	< 0.5%	0.57	0.55	0.43
WHITE / BLACK	LIGHT SIDE	6	50	44	1	5	< 0.5%	0.42	0.41	0.36
	DARK SIDE	6	24	70	1	5	< 0.5%	0.60	0.58	0.45

TS Solar Transmittance
RS Solar Reflectance
AS Solar Absorptance
Tuv Ultraviolet Transmittance
TV Visual Transmittance
O-F Openness Factor

1/8 CL 1/8" Clear Glass
1/4 CL 1/4" Clear Glass
1/4 HA 1/4" Heat Absorbing Glass

- The solar optical properties are used to calculate the shading coefficient.
- The shading coefficient represents the percentage of solar heat gain that is transmitted to the interior through the glass and shading system. Darker colors provide maximum glare reduction and visibility.

SheerWeave 2500 | 1% openness



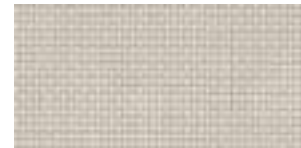
OYSTER



OYSTER/BEIGE



OYSTER/PEARL GRAY



BEIGE



BEIGE/PEARL GRAY



PEARL GRAY



CHARCOAL/GRAY



CHARCOAL/CHESTNUT



CHARCOAL

Specifications

MAX. FABRIC WIDTH: 98"
ROLL LENGTH: 30 yd
FABRIC WEIGHT: 16.1 oz/yd²
FABRIC THICKNESS: 0.024"
OPENNESS FACTOR: 1%
COMPOSITION: 65% PVC,
 35% fiberglass

UV BLOCKAGE: 99%
FIRE CLASSIFICATION: M1, California U.S. Title 19 (small Scale),
 NFPA 701-2004 TM#1, TM#2
BREAKING STRENGTH: warp 250 lbs, fill 235 lbs
STIFFNESS: warp 190 Mg, fill 220 Mg
YARN DIAMETER: warp 0.011", fill 0.013"

COLOR	SOLAR OPTICAL PROPERTIES				SHADING COEFFICIENT		
	TS	RS	AS	TV	1/8CL	1/4CL	1/4HA
OYSTER	15	68	17	19	0.31	0.32	0.31
OYSTER/BEIGE	10	60	30	9	0.36	0.36	0.33
OYSTER/PEARL GRAY	7	50	43	9	0.43	0.42	0.36
BEIGE	7	50	43	6	0.43	0.42	0.36
BEIGE/PEARL GRAY	5	42	53	5	0.48	0.46	0.39
PEARL GRAY	3	32	45	3	0.54	0.52	0.42
CHARCOAL	1	4	96	1	0.73	0.69	0.50
CHARCOAL/GRAY	2	8	90	3	0.70	0.67	0.49
CHARCOAL/CHESTNUT	1	6	93	1	0.71	0.68	0.50

* Test results not yet available.

TS Solar Transmittance **1/8 CL** 1/8" Clear Glass
RS Solar Reflectance **1/4 CL** 1/4" Clear Glass
AS Solar Absorptance **1/4 HA** 1/4" Heat Absorbing Glass
TV Visual Transmittance

- The solar optical properties are used to calculate the shading coefficient.
- The shading coefficient represents the percentage of solar heat gain that is transmitted to the interior through the glass and shading system. Darker colors provide maximum glare reduction and visibility.

SheerWeave 2701

1% openness

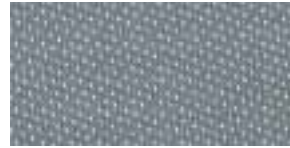
Fabric is also available in: 3% openness (see SheerWeave 2703, page 96)
 5% openness (see SheerWeave 2705, page 108)
 10% openness (see SheerWeave 2710, page 118)



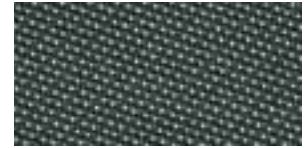
OYSTER



OYSTER/BEIGE



OYSTER/PEWTER



OYSTER/CHARCOAL



OYSTER/CHESTNUT

Specifications

MAX. FABRIC WIDTH: 98.4"
 ROLL LENGTH: 30 yd
 FABRIC WEIGHT: 14.6 oz/yd²
 FABRIC THICKNESS: 0.027"
 OPENNESS FACTOR: 1%

COMPOSITION: 64% PVC, 36% fiberglass
 UV BLOCKAGE: 99%
 FIRE CLASSIFICATION: NFPA 701-04 TM#1, TM#2
 California U.S. Title 19
 BREAKING STRENGTH: warp 262 lbs
 fill 377 lbs

COLOR	SOLAR OPTICAL PROPERTIES				SHADING COEFFICIENT		
	TS	RS	AS	TV	1/8CL	1/4CL	1/4HA
OYSTER	21	64	15	17	0.36	0.36	0.33
OYSTER/BEIGE	15	57	28	12	0.38	0.38	0.34
OYSTER/CHARCOAL	5	39	56	6	0.49	0.47	0.39
OYSTER/PEWTER	6	43	51	6	0.46	0.45	0.37
OYSTER/CHESTNUT	6	41	53	6	0.47	0.46	0.38

* Test results not yet available.

TS Solar Transmittance **1/8 CL** 1/8" Clear Glass
RS Solar Reflectance **1/4 CL** 1/4" Clear Glass
AS Solar Absorptance **1/4 HA** 1/4" Heat Absorbing Glass
TV Visual Transmittance

- The solar optical properties are used to calculate the shading coefficient.
- The shading coefficient represents the percentage of solar heat gain that is transmitted to the interior through the glass and shading system. Darker colors provide maximum glare reduction and visibility.

E Screen 7503 | 3% openness

Fabric is also available in: 1% openness (see E Screen 7501, page 85)
 5% openness (see E Screen 7505, page 101)
 10% openness (see E Screen 7510, page 113)



WHITE / WHITE



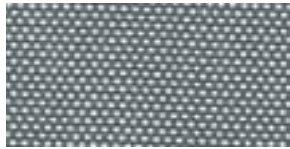
WHITE / LINEN



LINEN / LINEN



WHITE / PEARL



GRAY / WHITE



GRAY / GRAY



CHARCOAL / GRAY



CHARCOAL / BRONZE



CHARCOAL / CHARCOAL

Specifications

MAX. FABRIC WIDTH: 98.4"
 ROLL LENGTH: 30 yd
 FABRIC WEIGHT: 12.3 oz/yd²
 FABRIC THICKNESS: 0.020"
 OPENNESS FACTOR: 3%
 COMPOSITION: 64% vinyl, 36% fiberglass

UV BLOCKAGE: 97-98%
 FIRE CLASSIFICATION: NFPA 701-04 TM#1,
 California Title 19
 BREAKING STRENGTH: warp > 280 lbs
 weft > 250 lbs
 YARN DIAMETER: warp 26 ends/in
 weft 16 ends/in

COLOR	SOLAR OPTICAL PROPERTIES				SHADING COEFFICIENT WITH					
	TS	RS	AS	TV	SINGLE			INSULATING		
					1/8 CL	1/4 CL	1/4 HA	1/2 CL	1 CL	1 HA
WHITE/WHITE	20	65	15	17	*	0.35	0.33	*	*	*
WHITE/LINEN	19	60	21	16	*	0.38	0.34	*	*	*
LINEN/LINEN	20	51	29	15	*	0.44	0.38	*	*	*
WHITE/PEARL	13	51	36	11	*	0.42	0.37	*	*	*
GRAY/WHITE	9	30	61	6	*	0.55	0.43	*	*	*
GRAY/GRAY	6	18	76	5	*	0.61	0.47	*	*	*
CHARCOAL/GRAY	3	9	88	3	*	0.66	0.49	*	*	*
CHARCOAL/BRONZE	2	6	92	3	*	0.68	0.50	*	*	*
CHARCOAL/CHARCOAL	2	5	93	3	*	0.68	0.50	*	*	*

* Test results not yet available.

TS Solar Transmittance **1/8 CL** 1/8" Clear Glass
RS Solar Reflectance **1/4 CL** 1/4" Clear Glass
AS Solar Absorptance **1/4 HA** 1/4" Heat Absorbing Glass
TV Visual Transmittance

- The solar optical properties are used to calculate the shading coefficient.
- The shading coefficient represents the percentage of solar heat gain that is transmitted to the interior through the glass and shading system. Darker colors provide maximum glare reduction and visibility.

GlacierScreen HD1003 | 3% openness

Fabric is also available in:
 5% openness (see GlacierScreen HD1005, page 102)
 10% openness (see GlacierScreen HD1010, page 114)



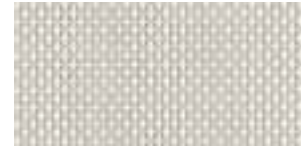
WHITE / WHITE



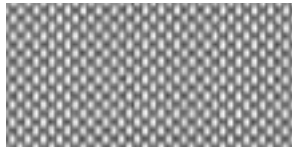
WHITE / LINEN



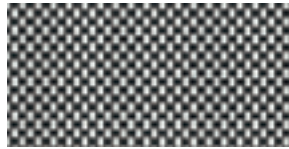
WHITE / SAND



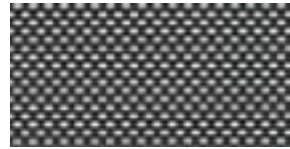
WHITE / PEARL



WHITE / GRAY



WHITE / BLACK



BLACK / PEARL



BLACK / BRONZE



BLACK / BLACK

Specifications

MAX. FABRIC WIDTH: 118"
 ROLL LENGTH: 32.8 yd
 FABRIC WEIGHT: 14.6 oz/yd²
 FABRIC THICKNESS: 0.0283"

OPENNESS FACTOR: 3%
 COMPOSITION: 78% vinyl, 22% polyester
 FIRE CLASSIFICATION: NFPA 701-2004 TM#1
 Cal Tech Title 19

COLOR	SOLAR OPTICAL PROPERTIES					SHADING COEFFICIENT WITH INSULATING		
	Ts	Rs	As	Tuv	Tv	1/8 CL	1/4 CL	1/4 HA
WHITE/WHITE	21	67	12	4	18	0.34	0.34	0.32
WHITE/SAND	13	50	37	4	11	0.44	0.43	0.37
WHITE/LINEN	20	63	17	4	16	0.36	0.36	0.33
WHITE/PEARL	15	54	31	4	13	0.42	0.41	0.36
WHITE/GRAY	8	38	54	4	9	0.51	0.50	0.40
WHITE/BLACK	6	29	65	4	7	0.57	0.55	0.43
BLACK/PEARL	4	18	78	4	6	0.64	0.61	0.46
BLACK/BLACK	4	4	92	4	6	0.73	0.69	0.51
BLACK/BRONZE	4	6	90	4	5	0.72	0.68	0.50

TS Solar Transmittance
RS Solar Reflectance
AS Solar Absorptance
Tuv Ultraviolet Transmittance
TV Visual Transmittance

1/8 CL 1/8" Clear Glass
1/4 CL 1/4" Clear Glass
1/4 HA 1/4" Heat Absorbing Glass

- The solar optical properties are used to calculate the shading coefficient.
- The shading coefficient represents the percentage of solar heat gain that is transmitted to the interior through the glass and shading system. Darker colors provide maximum glare reduction and visibility.

GlacierScreen HD2003 | 3% openness

Fabric is also available in:
1% openness (see GlacierScreen HD2001, page 86)



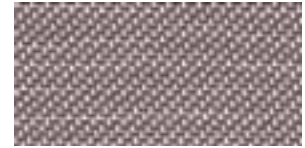
WHITE / WHITE



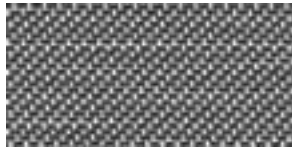
WHITE / LINEN



WHITE / SAND



WHITE / BRONZE



WHITE / BLACK

Specifications

MAX. FABRIC WIDTH: 118"
ROLL LENGTH: 32.8 yd
FABRIC WEIGHT: 13.3 oz/yd
FABRIC THICKNESS: 0.028"

OPENNESS FACTOR: 3%
COMPOSITION: 78% vinyl, 22% polyester
FIRE CLASSIFICATION: NFPA 701-2004 TM#1

COLOR	SOLAR OPTICAL PROPERTIES					SHADING COEFFICIENT WITH INSULATING			
	Ts	Rs	As	Tuv	Tv	1/8CL	1/4CL	1/4HA	
WHITE / WHITE	24	64	12	4	20	0.37	0.37	0.34	
WHITE / LINEN	LIGHT SIDE	23	63	14	4	19	0.37	0.37	0.34
	DARK SIDE	23	61	16	4	19	0.39	0.38	0.35
WHITE / SAND	LIGHT SIDE	17	58	25	4	14	0.39	0.39	0.35
	DARK SIDE	17	48	35	4	14	0.46	0.45	0.38
WHITE / BRONZE	LIGHT SIDE	11	50	39	4	11	0.43	0.43	0.37
	DARK SIDE	11	28	61	4	11	0.59	0.56	0.44
WHITE / BLACK	LIGHT SIDE	9	48	43	3	9	0.44	0.43	0.37
	DARK SIDE	9	23	68	3	9	0.62	0.59	0.45

TS Solar Transmittance
RS Solar Reflectance
AS Solar Absorptance
Tuv Ultraviolet Transmittance
TV Visual Transmittance

1/8 CL 1/8" Clear Glass
1/4 CL 1/4" Clear Glass
1/4 HA 1/4" Heat Absorbing Glass

- The solar optical properties are used to calculate the shading coefficient.
- The shading coefficient represents the percentage of solar heat gain that is transmitted to the interior through the glass and shading system. Darker colors provide maximum glare reduction and visibility.

M Screen 8503

3% openness

Fabric is also available in 5% openness (see M Screen 8505, page 103)



WHITE/WHITE



WHITE/LOTUS



WHITE/STONE



WHITE/LINEN



LINEN/LINEN



WHITE/SABLE



LINEN/STONE



PEARL/APRICOT



WHITE/PEARL



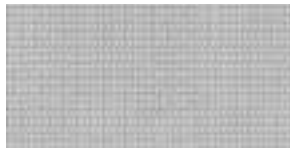
PEARL/LOTUS



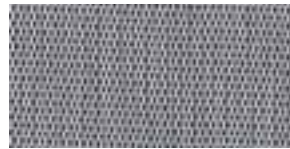
PEARL/LINEN



PEARL/SABLE



PEARL/PEARL



LINEN/ULTRAMARINE



WHITE/CANARY



PEARL/CANARY



CHARCOAL/APRICOT



CHARCOAL/SABLE



GRAY/LOTUS



CHARCOAL/LOTUS



GRAY/HUNTER



CHARCOAL/SKY



GRAY/ULTRAMARINE



CHARCOAL/GRAY



CHARCOAL/MANDARIN



CHARCOAL/PARROT



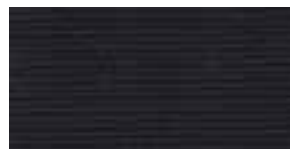
CHARCOAL/HUNTER



CHARCOAL/ULTRAMARINE



CHARCOAL/BRONZE



CHARCOAL/CHARCOAL

See next page for M Screen 8503 fabric specifications.

M Screen 8503 | Specifications

MAX. FABRIC WIDTH: 98.4"
ROLL LENGTH: 30 yd
FABRIC WEIGHT: 12.7 oz/yd²
FABRIC THICKNESS: 0.022"
OPENNESS FACTOR: 3%
COMPOSITION: 64% vinyl, 36% fiberglass

UV BLOCKAGE: 97%
FIRE CLASSIFICATION: NFPA 701 (small scale), California Title 19
BREAKING STRENGTH: warp > 290 lbs
 weft > 280 lbs
YARN DIAMETER: 0.012"

COLOR	SOLAR OPTICAL PROPERTIES				SHADING COEFFICIENT		
	TS	RS	AS	TV	1/8 CL	1/4 CL	1/4 HA
WHITE/WHITE	17	63	20	12	0.36	0.36	0.33
WHITE/LOTUS	19	57	24	12	0.41	0.40	0.35
WHITE/STONE	*	*	*	*	*	*	*
WHITE/LINEN	14	59	27	9	0.38	0.38	0.34
LINEN/LINEN	11	55	34	7	0.40	0.39	0.35
WHITE/SABLE	19	48	33	11	0.47	0.46	0.38
LINEN/STONE	*	*	*	*	*	*	*
PEARL/APRICOT	20	39	41	11	0.54	0.52	0.42
WHITE/PEARL	14	49	37	10	0.45	0.44	0.37
PEARL/LOTUS	14	39	47	9	0.52	0.50	0.41
PEARL/LINEN	10	43	47	7	0.48	0.47	0.39
PEARL/SABLE	15	34	51	10	0.56	0.54	0.43
PEARL/PEARL	11	34	55	7	0.55	0.53	0.42
LINEN/ULTRAMARINE	6	33	61	5	0.54	0.52	0.42
WHITE/CANARY	*	*	*	*	*	*	*
PEARL/CANARY	*	*	*	*	*	*	*
CHARCOAL/APRICOT	5	14	81	4	0.67	0.64	0.48
CHARCOAL/SABLE	4	12	84	4	0.68	0.65	0.48
GRAY/LOTUS	9	27	64	6	0.59	0.57	0.44
CHARCOAL/LOTUS	5	15	80	5	0.66	0.63	0.47
GRAY/HUNTER	*	*	*	*	*	*	*
CHARCOAL/SKY	*	*	*	*	*	*	*
GRAY/ULTRAMARINE	5	15	80	4	0.66	0.63	0.47
CHARCOAL/GRAY	4	9	87	5	0.70	0.66	0.49
CHARCOAL/MANDARIN	6	13	81	4	0.68	0.65	0.48
CHARCOAL/PARROT	*	*	*	*	*	*	*
CHARCOAL/HUNTER	4	6	90	4	0.72	0.68	0.5
CHARCOAL/ULTRAMARINE	3	6	91	4	0.72	0.68	0.50
CHARCOAL/BRONZE	3	6	91	4	0.72	0.68	0.50
CHARCOAL/CHARCOAL	3	4	93	4	0.73	0.69	0.51

* Test results not yet available.

TS Solar Transmittance **1/8 CL** 1/8" Clear Glass
RS Solar Reflectance **1/4 CL** 1/4" Clear Glass
AS Solar Absorptance **1/4 HA** 1/4" Heat Absorbing Glass
TV Visual Transmittance

- The solar optical properties are used to calculate the shading coefficient.
- The shading coefficient represents the percentage of solar heat gain that is transmitted to the interior through the glass and shading system. Darker colors provide maximum glare reduction and visibility.

See previous page for M Screen 8503 fabric colors.

SheerWeave 2410

3% openness

Fabric is also available in: 5% openness (see SheerWeave 2390, page 107)
10% openness (see SheerWeave 2360, page 117)



OYSTER



OYSTER/BEIGE



OYSTER/PEARL GRAY



BEIGE



BEIGE/PEARL GRAY



PEARL GRAY



CHARCOAL/GRAY



CHARCOAL/CHESTNUT



CHARCOAL

Specifications

MAX. FABRIC WIDTH: 98"
 ROLL LENGTH: 30 yd
 FABRIC WEIGHT: 13.9 oz/yd²
 FABRIC THICKNESS: 0.019"
 OPENNESS FACTOR: 3%
 COMPOSITION: 65% PVC on fiberglass,
 35% fiberglass
 UV BLOCKAGE: 97%

FIRE CLASSIFICATION: NFPA 701 (small scale), ASTM-G21 and
 ASTM-G22 (bacterial and fungal resistance)
 BREAKING STRENGTH: warp 255 lbs
 fill 325 lbs
 STIFFNESS: warp 212 Mg
 fill 233 Mg
 YARN DIAMETER: warp 0.011"
 fill 0.013"

COLOR	SOLAR OPTICAL PROPERTIES				SHADING COEFFICIENT WITH					
	TS	RS	AS	TV	SINGLE			INSULATING		
					1/8CL	1/4CL	1/4HA	1/2 CL	1CL	1HA
OYSTER	17	64	19	12	0.35	0.35	0.33	0.33	0.33	0.26
OYSTER/BEIGE	11	55	34	8	0.40	0.39	0.35	0.38	0.37	0.28
OYSTER/PEARL GRAY	9	44	47	7	0.47	0.46	0.38	0.44	0.43	0.31
BEIGE	10	48	42	7	0.45	0.44	0.37	0.42	0.41	0.30
BEIGE/PEARL GRAY	7	39	54	5	0.50	0.49	0.40	0.47	0.45	0.33
PEARL GRAY	6	31	63	5	0.56	0.53	0.42	0.52	0.49	0.35
CHARCOAL/GRAY	3	9	88	3	0.70	0.66	0.49	0.65	0.60	0.41
CHARCOAL/CHESTNUT	3	6	91	3	0.72	0.68	0.50	0.67	0.62	0.42
CHARCOAL	3	3	94	3	0.74	0.70	0.51	0.69	0.63	0.43

* Test results not yet available.

TS Solar Transmittance **1/8 CL** 1/8" Clear Glass
RS Solar Reflectance **1/4 CL** 1/4" Clear Glass
AS Solar Absorbance **1/4 HA** 1/4" Heat Absorbing Glass
TV Visual Transmittance

- The solar optical properties are used to calculate the shading coefficient.
- The shading coefficient represents the percentage of solar heat gain that is transmitted to the interior through the glass and shading system. Darker colors provide maximum glare reduction and visibility.

SheerWeave 2703

3% openness

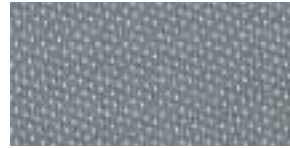
Fabric is also available in: 1% openness (see SheerWeave 2701, page 88)
 5% openness (see SheerWeave 2705, page 108)
 10% openness (see SheerWeave 2710, page 118)



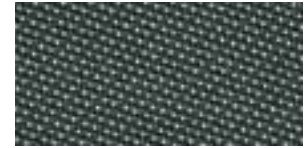
OYSTER



OYSTER/BEIGE



OYSTER/PEWTER



OYSTER/CHARCOAL



OYSTER/CHESTNUT

Specifications

MAX. FABRIC WIDTH: 98.4"
 ROLL LENGTH: 30 yd
 FABRIC WEIGHT: 14.0 oz/yd²
 FABRIC THICKNESS: 0.028"
 OPENNESS FACTOR: 3%

COMPOSITION: 64% PVC, 36% fiberglass
 UV BLOCKAGE: 97%
 FIRE CLASSIFICATION: NFPA 701-04 TM#1, TM#2
 California U.S. Title 19
 BREAKING STRENGTH: warp 247 lbs
 fill 312 lbs

COLOR	SOLAR OPTICAL PROPERTIES				SHADING COEFFICIENT		
	TS	RS	AS	TV	1/8CL	1/4CL	1/4HA
OYSTER	22	62	16	19	0.38	0.37	0.34
OYSTER/BEIGE	15	58	27	13	0.38	0.38	0.34
OYSTER/CHARCOAL	7	40	53	8	0.50	0.48	0.39
OYSTER/PEWTER	8	44	48	9	0.47	0.46	0.38
OYSTER/CHESTNUT	7	42	51	8	0.48	0.47	0.39

* Test results not yet available.

TS Solar Transmittance **1/8 CL** 1/8" Clear Glass
RS Solar Reflectance **1/4 CL** 1/4" Clear Glass
AS Solar Absorptance **1/4 HA** 1/4" Heat Absorbing Glass
TV Visual Transmittance

- The solar optical properties are used to calculate the shading coefficient.
- The shading coefficient represents the percentage of solar heat gain that is transmitted to the interior through the glass and shading system. Darker colors provide maximum glare reduction and visibility.

SheerWeave 4400

3% openness

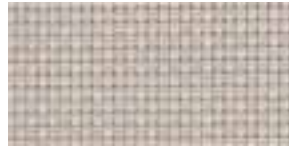
Fabric is also available in: 5% openness (see SheerWeave 4000, page 109)
10% openness (see SheerWeave 4100, page 119)



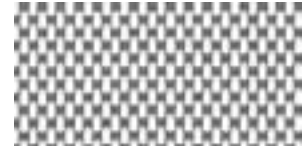
CHALK



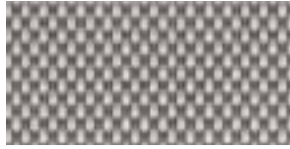
ALABASTER



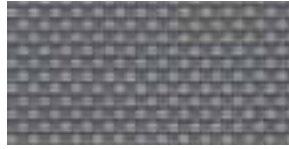
PEBBLESTONE



GRANITE



GRAYSTONE



PEWTER



ASH



TOBACCO



EBONY

Specifications

MAX. FABRIC WIDTH: 98"
ROLL LENGTH: 30 yd
FABRIC WEIGHT: 20.7 oz/yd²
FABRIC THICKNESS: 0.037"
OPENNESS FACTOR: 3%
COMPOSITION: 75% PVC on polyester, 25% polyester
UV BLOCKAGE: 97%

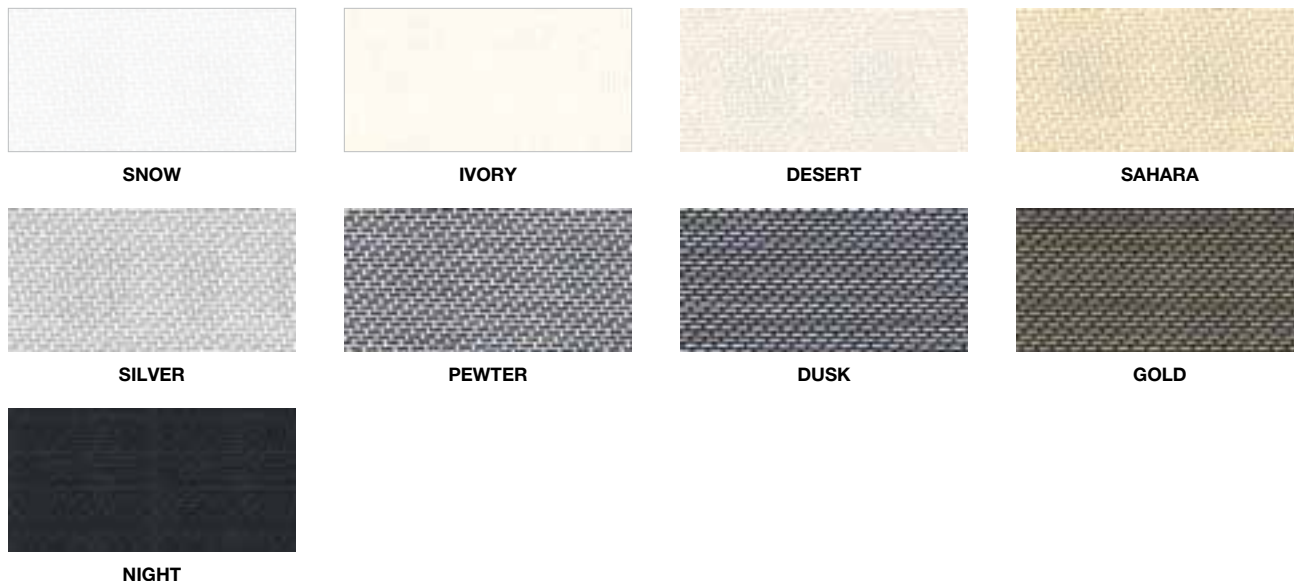
FIRE CLASSIFICATION: NFPA 701 (small scale)
BREAKING STRENGTH: warp 340 lbs
fill 250 lbs
STIFFNESS: warp 650 Mg
fill 450 Mg
STRETCH: warp 1.5%, fill 4.0%
YARN DIAMETER: 0.020"

COLOR	SOLAR OPTICAL PROPERTIES				SHADING COEFFICIENT WITH					
	TS	RS	AS	TV	SINGLE			INSULATING		
					1/8 CL	1/4 CL	1/4 HA	1/2 CL	1 CL	1 HA
CHALK	12	70	18	7	*	0.30	0.30	*	0.16	0.15
ALABASTER	10	62	28	6	*	0.35	0.32	*	0.19	0.17
PEBBLESTONE	9	51	40	6	*	0.42	0.36	*	0.38	0.28
GRANITE	6	48	46	5	*	0.43	0.37	*	0.25	0.20
GRAYSTONE	6	39	55	5	*	0.48	0.40	*	0.44	0.32
PEWTER	3	26	71	2	*	0.56	0.44	*	0.34	0.25
ASH	3	10	87	4	*	0.66	0.49	*	0.60	0.41
TOBACCO	3	5	92	3	*	0.69	0.50	*	0.62	0.42
EBONY	3	3	94	3	*	0.70	0.51	*	0.63	0.43

* Test results not yet available.

TS Solar Transmittance **1/8 CL** 1/8" Clear Glass
RS Solar Reflectance **1/4 CL** 1/4" Clear Glass
AS Solar Absorptance **1/4 HA** 1/4" Heat Absorbing Glass
TV Visual Transmittance

- The solar optical properties are used to calculate the shading coefficient.
- The shading coefficient represents the percentage of solar heat gain that is transmitted to the interior through the glass and shading system. Darker colors provide maximum glare reduction and visibility.



Specifications

MAX. FABRIC WIDTH: 98"
ROLL LENGTH: 55 yd
FABRIC WEIGHT: 12.38 oz/yd²
FABRIC THICKNESS: 0.022"
OPENNESS FACTOR: 4%
COMPOSITION: 66% PVC, 34% fiberglass

UV BLOCKAGE: 90%
FIRE CLASSIFICATION: NFPA 701 (small scale)
BREAKING STRENGTH: warp 190 lbs
 weft 110 lbs
STRETCH: warp 3.6%, fill 3.4%
YARN DIAMETER: 0.001"

	SOLAR OPTICAL PROPERTIES				SHADING COEFFICIENT WITH					
					SINGLE			INSULATING		
COLOR	TS	RS	AS	TV	1/8 CL	1/4 CL	1/4 HA	1/2 CL	1 CL	1 HA
SNOW	19	62	19	13	0.37	0.34	*	*	0.34	0.27
IVORY	20	59	21	13	0.39	0.39	0.35	*	0.36	0.28
DESERT	17	60	23	11	0.38	0.34	*	*	0.38	0.29
	17	55	28	11	0.41	0.36	*	*	0.38	0.29
SAHARA	19	56	25	12	0.41	0.41	0.36	*	0.38	0.29
	19	50	31	12	0.46	0.44	0.38	*	0.41	0.31
SILVER	13	56	31	9	0.39	0.35	*	*	0.37	0.28
	13	45	42	9	0.46	0.39	*	*	0.43	0.31
PEWTER	11	46	43	9	0.46	0.45	0.38	*	0.42	0.31
	11	26	63	9	0.60	0.58	0.45	*	0.52	0.37
DUSK	5	8	87	5	*	*	*	*	*	*
	5	24	71	5	*	*	*	*	*	*
GOLD	4	7	89	5	*	*	*	*	*	*
	4	20	76	5	*	*	*	*	*	*
NIGHT	4	4	92	4	*	*	*	*	*	*
	4	4	92	4	*	*	*	*	*	*

* Test results not yet available.

TS Solar Transmittance **1/8 CL** 1/8" Clear Glass
RS Solar Reflectance **1/4 CL** 1/4" Clear Glass
AS Solar Absorptance **1/4 HA** 1/4" Heat Absorbing Glass
TV Visual Transmittance

- The solar optical properties are used to calculate the shading coefficient.
- The shading coefficient represents the percentage of solar heat gain that is transmitted to the interior through the glass and shading system. Darker colors provide maximum glare reduction and visibility.

E Screen 7505

5% openness

Fabric is also available in: 1% openness (see E Screen 7501, page 85)
 3% openness (see E Screen 7503, page 90)
 10% openness (see E Screen 7510, page 113)



WHITE / WHITE



WHITE / LINEN



LINEN / STONE



LINEN / LINEN



WHITE / PEARL



PEARL / LINEN



PEARL / PEARL



CHARCOAL / GRAY



CHARCOAL / BRONZE



CHARCOAL / CHARCOAL

Specifications

MAX. FABRIC WIDTH: 96"
 ROLL LENGTH: 30 yd
 FABRIC WEIGHT: 12.01 oz/yd²
 FABRIC THICKNESS: 0.020"
 OPENNESS FACTOR: 5%
 COMPOSITION: 64% vinyl, 36% fiberglass

UV BLOCKAGE: 93-94%
 FIRE CLASSIFICATION: NFPA 701 (small scale) TM#1
 California Title 19, M1
 BREAKING STRENGTH: warp > 290 lbs
 weft > 280 lbs
 YARN DIAMETER: 0.012"

COLOR	SOLAR OPTICAL PROPERTIES				SHADING COEFFICIENT	
	TS	RS	AS	TV	1/4CL	1/4HA
WHITE/WHITE	27	59	14	20	0.41	0.36
WHITE/LINEN	25	54	21	18	0.43	0.37
LINEN/STONE	23	51	24	20	0.45	0.38
LINEN/LINEN	17	53	30	13	0.42	0.36
WHITE/PEARL	21	46	33	17	0.47	0.39
PEARL/LINEN	17	42	41	13	0.49	0.40
PEARL/PEARL	18	33	49	14	0.55	0.43
CHARCOAL/GRAY	8	10	82	8	0.68	0.50
CHARCOAL/BRONZE	8	6	86	9	0.69	0.51
CHARCOAL/CHARCOAL	7	4	89	8	0.70	0.51

* Test results not yet available.

TS Solar Transmittance **1/8 CL** 1/8" Clear Glass
RS Solar Reflectance **1/4 CL** 1/4" Clear Glass
AS Solar Absorptance **1/4 HA** 1/4" Heat Absorbing Glass
TV Visual Transmittance

- The solar optical properties are used to calculate the shading coefficient.
- The shading coefficient represents the percentage of solar heat gain that is transmitted to the interior through the glass and shading system. Darker colors provide maximum glare reduction and visibility.

GlacierScreen HD1005 | 5% openness

Fabric is also available in:
 3% openness (see GlacierScreen HD1003, page 91)
 10% openness (see GlacierScreen HD1010, page 114)



WHITE / WHITE



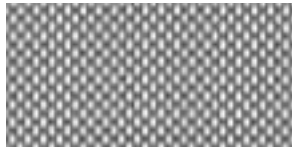
WHITE / LINEN



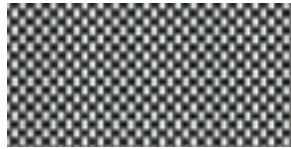
WHITE / SAND



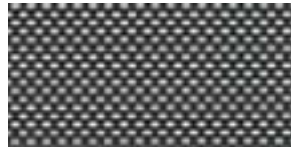
WHITE / PEARL



WHITE / GRAY



WHITE / BLACK



BLACK / PEARL



BLACK / BRONZE



BLACK / BLACK

Specifications

MAX. FABRIC WIDTH: 118"
 ROLL LENGTH: 33 yd.
 FABRIC WEIGHT: 14.6 oz/yd²
 FABRIC THICKNESS: 0.0268"

OPENNESS FACTOR: 5%
 COMPOSITION: 78% vinyl, 22% polyester
 FIRE CLASSIFICATION: NFPA 701-99 (small scale), Silver nano sterilization verified for anti-microbial performance

COLOR	SOLAR OPTICAL PROPERTIES						SHADING COEFFICIENT WITH INSULATING		
	Ts	Rs	As	Tuv	Tv	O-F	1/8 CL	1/4 CL	1/4 HA
WHITE/WHITE	23	63	14	5	18	6	0.37	0.37	0.34
WHITE/LINEN	21	60	19	5	16	5	0.39	0.39	0.35
WHITE/SAND	15	48	37	5	12	6	0.46	0.45	0.38
WHITE/PEARL	17	52	31	5	13	5	0.44	0.43	0.37
WHITE/GRAY	10	36	54	5	10	6	0.53	0.51	0.41
WHITE/BLACK	8	27	65	5	9	5	0.59	0.56	0.44
BLACK/PEARL	7	18	75	5	8	6	0.65	0.62	0.47
BLACK/BRONZE	6	6	88	5	7	5	0.73	0.69	0.50
BLACK/BLACK	6	4	90	5	7	5	0.74	0.70	0.51

TS Solar Transmittance
RS Solar Reflectance
AS Solar Absorptance
Tuv Ultraviolet Transmittance
TV Visual Transmittance
O-F Openness Factor

1/8 CL 1/8" Clear Glass
1/4 CL 1/4" Clear Glass
1/4 HA 1/4" Heat Absorbing Glass

- The solar optical properties are used to calculate the shading coefficient.
- The shading coefficient represents the percentage of solar heat gain that is transmitted to the interior through the glass and shading system. Darker colors provide maximum glare reduction and visibility.

M Screen 8505

5% openness

Fabric is also available in 3% openness (see M Screen 8503, page 93)



WHITE/WHITE



WHITE/LOTUS



WHITE/STONE



WHITE/LINEN



LINEN/LINEN



WHITE/SABLE



LINEN/STONE



PEARL/APRICOT



WHITE/PEARL



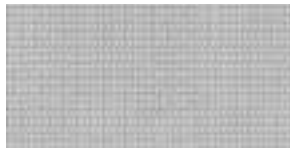
PEARL/LOTUS



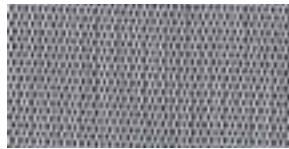
PEARL/LINEN



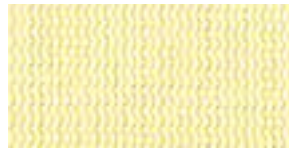
PEARL/SABLE



PEARL/PEARL



LINEN/ULTRAMARINE



WHITE/CANARY



PEARL/CANARY



CHARCOAL/APRICOT



CHARCOAL/SABLE



GRAY/LOTUS



CHARCOAL/LOTUS



GRAY/HUNTER



CHARCOAL/SKY



GRAY/ULTRAMARINE



CHARCOAL/GRAY



CHARCOAL/MANDARIN



CHARCOAL/PARROT



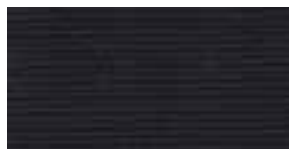
CHARCOAL/HUNTER



CHARCOAL/ULTRAMARINE



CHARCOAL/BRONZE



CHARCOAL/CHARCOAL

See next page for M Screen 8505 fabric specifications.

M Screen 8505 | Specifications

MAX. FABRIC WIDTH: 98.4"
ROLL LENGTH: 30 yd
FABRIC WEIGHT: 11.9 oz/yd²
FABRIC THICKNESS: 0.022"
OPENNESS FACTOR: 5%
COMPOSITION: 64% vinyl, 36% fiberglass

UV BLOCKAGE: 95%
FIRE CLASSIFICATION: NFPA 701 (small scale), California Title 19
BREAKING STRENGTH: warp 239 lbs
 fill 233 lbs
YARN DIAMETER: 0.012"

COLOR	SOLAR OPTICAL PROPERTIES				SHADING COEFFICIENT		
	TS	RS	AS	TV	1/8 CL	1/4 CL	1/4 HA
WHITE/WHITE	20	63	17	15	0.36	0.36	0.33
WHITE/LOTUS	21	56	23	15	0.42	0.41	0.36
WHITE/STONE	22	56	22	15	0.42	0.41	0.36
WHITE/LINEN	21	56	23	15	0.42	0.41	0.36
LINEN/LINEN	18	51	31	12	0.45	0.44	0.37
WHITE/SABLE	20	48	32	12	0.47	0.46	0.39
LINEN/STONE	23	48	29	15	0.48	0.47	0.39
PEARL/APRICOT	22	38	40	13	0.55	0.53	0.42
WHITE/PEARL	16	49	35	12	0.45	0.44	0.38
PEARL/LOTUS	18	40	42	13	0.52	0.51	0.41
PEARL/LINEN	19	40	41	13	0.53	0.51	0.41
PEARL/SABLE	18	33	49	11	0.57	0.55	0.43
PEARL/PEARL	15	35	50	11	0.55	0.53	0.42
LINEN/ULTRAMARINE	12	27	61	9	0.60	0.57	0.44
WHITE/CANARY	*	*	*	*	*	*	*
PEARL/CANARY	*	*	*	*	*	*	*
CHARCOAL/APRICOT	7	13	80	7	0.68	0.65	0.48
CHARCOAL/SABLE	7	12	81	7	0.69	0.65	0.49
GRAY/LOTUS	12	27	61	9	0.6	0.57	0.44
CHARCOAL/LOTUS	8	16	76	8	0.66	0.63	0.47
GRAY/HUNTER	8	16	76	7	0.66	0.63	0.47
CHARCOAL/SKY	*	*	*	*	*	*	*
GRAY/ULTRAMARINE	8	15	77	7	0.67	0.64	0.48
CHARCOAL/GRAY	6	10	84	7	0.70	0.66	0.49
CHARCOAL/MANDARIN	7	13	80	5	0.68	0.65	0.48
CHARCOAL/PARROT	*	*	*	*	*	*	*
CHARCOAL/HUNTER	6	7	87	7	0.72	0.68	0.50
CHARCOAL/ULTRAMARINE	6	7	87	7	0.72	0.68	0.50
CHARCOAL/BRONZE	6	7	87	7	0.72	0.68	0.50
CHARCOAL/CHARCOAL	6	5	89	7	0.73	0.69	0.51

* Test results not yet available.

TS Solar Transmittance **1/8 CL** 1/8" Clear Glass
RS Solar Reflectance **1/4 CL** 1/4" Clear Glass
AS Solar Absorptance **1/4 HA** 1/4" Heat Absorbing Glass
TV Visual Transmittance

- The solar optical properties are used to calculate the shading coefficient.
- The shading coefficient represents the percentage of solar heat gain that is transmitted to the interior through the glass and shading system. Darker colors provide maximum glare reduction and visibility.

See previous page for M Screen 8505 fabric colors.



FLAGSTONE



RIVER ROCK



HAZELNUT



PARCHMENT



TUMBLEWEED



NATURELLE



HARVEST

Specifications

MAX. FABRIC WIDTH: 98.4"
 ROLL LENGTH: 30 yd
 FABRIC WEIGHT: 11.3 oz/yd²
 FABRIC THICKNESS: 0.020"
 OPENNESS FACTOR: 5%

COMPOSITION: 64% vinyl, 36% fiberglass
 UV BLOCKAGE: 95-96%
 FIRE CLASSIFICATION: NFPA 701-99 TM#1,
 California U.S. Title 19, ASTM E-84
 BREAKING STRENGTH: warp > 280 lbs
 weft > 250 lbs

COLOR	SOLAR OPTICAL PROPERTIES				SHADING COEFFICIENT	
	TS	RS	AS	TV	1/4CL	1/4HA
FLAGSTONE	6	18	76	8	0.61	0.47
RIVER ROCK	7	31	62	7	0.54	0.42
HAZELNUT	6	15	79	7	0.63	0.48
PARCHMENT	12	51	37	10	0.42	0.36
TUMBLEWEED	7	29	64	7	0.55	0.43
NATURELLE	12	50	38	10	0.43	0.37
HARVEST	5	16	79	7	0.62	0.47

TS Solar Transmittance
RS Solar Reflectance
AS Solar Absorptance
TV Visual Transmittance
1/8 CL 1/8" Clear Glass
1/4 CL 1/4" Clear Glass
1/4 HA 1/4" Heat Absorbing Glass

- The solar optical properties are used to calculate the shading coefficient.
- The shading coefficient represents the percentage of solar heat gain that is transmitted to the interior through the glass and shading system. Darker colors provide maximum glare reduction and visibility.



WHITE



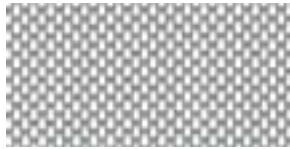
WHITE/BONE



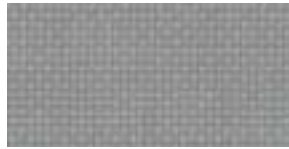
BONE



BONE/PLATINUM



WHITE/PLATINUM



PLATINUM



BRONZE



CHARCOAL



CHARCOAL/GRAY



CHARCOAL/CHESTNUT

Specifications

MAX. FABRIC WIDTH: 96"
ROLL LENGTH: 30 yd
FABRIC WEIGHT: 14.26 oz/yd²
FABRIC THICKNESS: 0.019"
OPENNESS FACTOR: 5%
COMPOSITION: 63% PVC on fiberglass,
 37% fiberglass
UV BLOCKAGE: 95%

FIRE CLASSIFICATION: California Title 19 (small scale), NFPA 701-99
 TM#1 (small scale), NFPA 101 (Class A Rating),
 UBC (Class I), ASTM-G21 and ASTM-G22
 (bacterial and fungal resistance)
BREAKING STRENGTH: warp 224 lbs
 fill 200 lbs
STIFFNESS: warp 137 lbs
 fill 171 lbs
YARN DIAMETER: warp 0.013"
 fill 0.013"

COLOR	SOLAR OPTICAL PROPERTIES				SHADING COEFFICIENT		
	TS	RS	AS	TV	1/8CL	1/4CL	1/4HA
WHITE	20	67	13	16	0.33	0.34	0.32
WHITE/BONE	18	61	21	13	0.37	0.37	0.34
BONE	18	55	27	12	0.42	0.41	0.36
BONE/PLATINUM	12	43	45	10	0.49	0.47	0.39
WHITE/PLATINUM	13	49	38	11	0.45	0.44	0.37
PLATINUM	10	35	55	9	0.54	0.52	0.42
BRONZE	5	7	88	6	0.72	0.68	0.50
CHARCOAL	6	4	90	6	0.74	0.70	0.51
CHARCOAL GRAY	7	9	84	7	0.71	0.67	0.50
CHARCOAL CHESTNUT	6	7	87	6	0.72	0.68	0.50

TS Solar Transmittance **1/8 CL** 1/8" Clear Glass
RS Solar Reflectance **1/4 CL** 1/4" Clear Glass
AS Solar Absorptance **1/4 HA** 1/4" Heat Absorbing Glass
TV Visual Transmittance

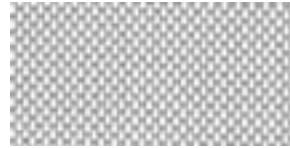
- The solar optical properties are used to calculate the shading coefficient.
- The shading coefficient represents the percentage of solar heat gain that is transmitted to the interior through the glass and shading system. Darker colors provide maximum glare reduction and visibility.



OYSTER



OYSTER/BEIGE



OYSTER/PEARL GRAY



BEIGE



BEIGE/PEARL GRAY



PEARL GRAY



CHARCOAL/GRAY



CHARCOAL/CHESTNUT



CHARCOAL

Specifications

MAX. FABRIC WIDTH: 98"
ROLL LENGTH: 30 yd
FABRIC WEIGHT: 11.9 oz/yd²
FABRIC THICKNESS: 0.017"
OPENNESS FACTOR: 5%
COMPOSITION: 65% PVC on fiberglass
35% fiberglass
UV BLOCKAGE: 95%

FIRE CLASSIFICATION: California Title 19 (small scale), NFPA 701-99 TM#1 (small scale), NFPA 101 (Class A Rating), UBC (Class I), ASTM-G21 and ASTM-G22 (bacterial and fungal resistance)
BREAKING STRENGTH: warp 250 lbs
fill 235 lbs
STIFFNESS: warp 190 Mg
fill 220 Mg
YARN DIAMETER: warp 0.011"
fill 0.011"

COLOR	SOLAR OPTICAL PROPERTIES				SHADING COEFFICIENT WITH					
					SINGLE			INSULATING		
	TS	RS	AS	TV	1/8CL	1/4CL	1/4HA	1/2 CL	1CL	1HA
OYSTER	21	61	18	14	0.38	0.38	0.34	0.36	0.35	0.27
OYSTER/BEIGE	17	54	29	12	0.42	0.41	0.36	0.39	0.38	0.29
OYSTER/PEARL GRAY	14	45	41	10	0.48	0.46	0.39	0.45	0.43	0.32
BEIGE	14	47	39	10	0.46	0.45	0.38	0.43	0.42	0.31
BEIGE/PEARL GRAY	11	38	51	9	0.52	0.50	0.41	0.49	0.46	0.33
PEARL GRAY	10	31	59	9	0.57	0.54	0.43	0.53	0.50	0.35
CHARCOAL/GRAY	5	9	86	6	0.70	0.67	0.49	0.66	0.60	0.41
CHARCOAL/CHESTNUT	6	6	88	6	0.73	0.69	0.50	0.68	0.62	0.42
CHARCOAL	4	4	92	5	0.73	0.69	0.51	0.69	0.63	0.43

TS Solar Transmittance **1/8 CL** 1/8" Clear Glass
RS Solar Reflectance **1/4 CL** 1/4" Clear Glass
AS Solar Absorptance **1/4 HA** 1/4" Heat Absorbing Glass
TV Visual Transmittance

- The solar optical properties are used to calculate the shading coefficient.
- The shading coefficient represents the percentage of solar heat gain that is transmitted to the interior through the glass and shading system. Darker colors provide maximum glare reduction and visibility.

SheerWeave 2705

5% openness

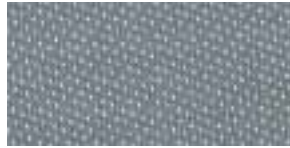
Fabric is also available in: 1% openness (see SheerWeave 2701, page 88)
 3% openness (see SheerWeave 2703, page 96)
 10% openness (see SheerWeave 2710, page 118)



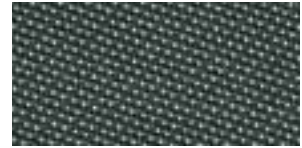
OYSTER



OYSTER/BEIGE



OYSTER/PEWTER



OYSTER/CHARCOAL



OYSTER/CHESTNUT

Specifications

MAX. FABRIC WIDTH: 63", 98.4"
 ROLL LENGTH: 30 yd
 FABRIC WEIGHT: 11.8 oz/yd²
 FABRIC THICKNESS: 0.025"
 OPENNESS FACTOR: 5%

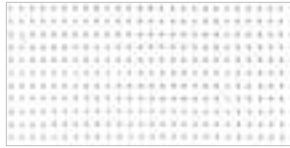
COMPOSITION: 64% PVC, 36% fiberglass
 UV BLOCKAGE: 95%
 FIRE CLASSIFICATION: NFPA 701-04 TM#1, TM#2
 California U.S. Title 19
 BREAKING STRENGTH: warp 279 lbs
 fill 240 lbs

COLOR	SOLAR OPTICAL PROPERTIES				SHADING COEFFICIENT		
	TS	RS	AS	TV	SINGLE		
					1/8 CL	1/4 CL	1/4 HA
OYSTER	22	62	16	20	0.38	0.37	0.34
OYSTER/BEIGE	23	54	23	21	0.44	0.43	0.37
OYSTER/CHARCOAL	12	40	48	14	0.51	0.49	0.40
OYSTER/PEWTER	11	46	43	12	0.46	0.45	0.38
OYSTER/CHESTNUT	12	43	45	13	0.49	0.47	0.39

* Test results not yet available.

TS Solar Transmittance **1/8 CL** 1/8" Clear Glass
RS Solar Reflectance **1/4 CL** 1/4" Clear Glass
AS Solar Absorptance **1/4 HA** 1/4" Heat Absorbing Glass
TV Visual Transmittance

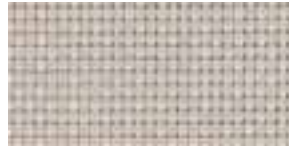
- The solar optical properties are used to calculate the shading coefficient.
- The shading coefficient represents the percentage of solar heat gain that is transmitted to the interior through the glass and shading system. Darker colors provide maximum glare reduction and visibility.



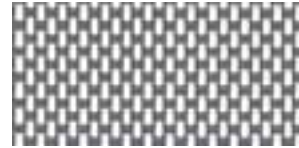
CHALK



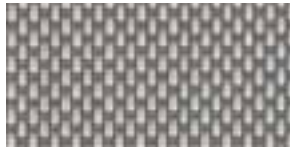
ALABASTER



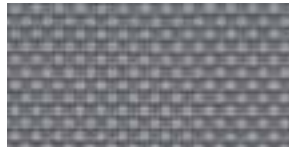
PEBBLESTONE



GRANITE



GRAYSTONE



PEWTER



ASH



TOBACCO



EBONY

Specifications

MAX. FABRIC WIDTH: 98"
ROLL LENGTH: 30 yd
FABRIC WEIGHT: 19.2 oz/yd²
FABRIC THICKNESS: 0.036"
OPENNESS FACTOR: 5%
COMPOSITION: 75% PVC on polyester
25% polyester
UV BLOCKAGE: 95%

FIRE CLASSIFICATION: NFPA 701 (small scale), ASTM-G21 and ASTM-G22 (bacterial and fungal resistance)
BREAKING STRENGTH: warp 315 lbs
fill 260 lbs
STIFFNESS: warp 600 Mg
fill 400 Mg
STRETCH: warp 1.0%
fill 7.0%
YARN DIAMETER: warp 0.020"
fill 0.020"

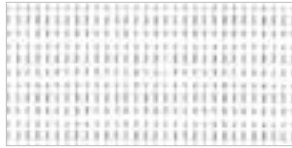
COLOR	SOLAR OPTICAL PROPERTIES				SHADING COEFFICIENT WITH					
					SINGLE			INSULATING		
	TS	RS	AS	TV	1/8CL	1/4CL	1/4HA	1/2 CL	1CL	1HA
CHALK	16	68	16	12	*	0.32	0.31	*	0.31	0.25
ALABASTER	15	57	28	13	*	0.39	0.35	*	0.36	0.28
PEBBLESTONE	14	49	37	12	*	0.44	0.37	*	0.41	0.30
GRANITE	11	41	48	10	*	0.48	0.40	*	0.29	0.23
GRAYSTONE	10	34	56	9	*	0.52	0.42	*	0.32	0.24
PEWTER	8	27	65	9	*	0.56	0.44	*	0.51	0.36
ASH	7	11	82	8	*	0.66	0.49	*	0.41	0.30
TOBACCO	7	5	88	8	*	0.70	0.51	*	0.44	0.31
EBONY	10	4	86	11	*	0.69	0.51	*	0.63	0.43

* Test results not yet available.

TS Solar Transmittance **1/8 CL** 1/8" Clear Glass
RS Solar Reflectance **1/4 CL** 1/4" Clear Glass
AS Solar Absorptance **1/4 HA** 1/4" Heat Absorbing Glass
TV Visual Transmittance

- The solar optical properties are used to calculate the shading coefficient.
- The shading coefficient represents the percentage of solar heat gain that is transmitted to the interior through the glass and shading system. Darker colors provide maximum glare reduction and visibility.

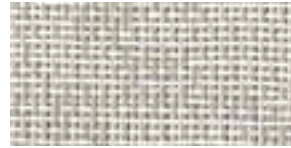
SheerWeave 5000 | 5% – 10% openness



BAMBOO WHITEWASH



BAMBOO BIRCH



MARBLE SAND

Specifications

MAX. FABRIC WIDTH:	74"	FIRE CLASSIFICATION:	California Title 19 (Small Scale), NFPA 701-99 TM#1 (Small and Large Scale), British Standard 5867, NFPA (Class A Rating, and UBC (Class 1)
ROLL LENGTH:	30 yd	BREAKING STRENGTH:	See Chart Below
MESH:	See Chart Below	STIFFNESS:	See Chart Below
FABRIC WEIGHT:	See Chart Below	STRETCH:	warp 1.0% fill 8.0%
FABRIC THICKNESS:	0.038"	YARN DIAMETER:	warp 0.018" fill 0.018"
OPENNESS FACTOR:	See Chart Below		
COMPOSITION:	72% PVC on polyester, 28% polyester		
UV BLOCKAGE:	See Chart Below		

COLOR	MESH (ENDS/IN.)	MESH WEIGHT	OPENNESS FACTOR	UV BLOCKAGE	BREAKING STRENGTH (LBS./IN.)	STIFFNESS (MG.)
BAMBOO WHITEWASH	42 warp 20 fill	14.5 (oz./yd ²)	approx 10%	approx 90%	330 warp 180 fill	700 warp 500 fill
BAMBOO BIRCH	42 warp 20 fill	14.5 (oz./yd ²)	approx 10%	approx 90%	330 warp 180 fill	700 warp 500 fill
MARBLE SAND	42 warp 20 fill	14.5 (oz./yd ²)	approx 5%	approx 95%	330 warp 180 fill	700 warp 500 fill

COLOR	SOLAR OPTICAL PROPERTIES				SHADING COEFFICIENT WITH					
	TS	RS	AS	TV	SINGLE			INSULATING		
					1/8CL	1/4CL	1/4HA	1/2CL	1CL	1HA
BAMBOO WHITEWASH	20	65	15	17	0.35	0.35	0.33	0.33	0.33	0.26
BAMBOO BIRCH	21	59	20	18	0.40	0.39	0.35	0.37	0.36	0.28
MARBLE SAND	9	48	43	9	0.44	0.43	0.37	0.42	0.40	0.30

TS Solar Transmittance **1/8 CL** 1/8" Clear Glass
RS Solar Reflectance **1/4 CL** 1/4" Clear Glass
AS Solar Absorptance **1/4 HA** 1/4" Heat Absorbing Glass
TV Visual Transmittance

- The solar optical properties are used to calculate the shading coefficient.
- The shading coefficient represents the percentage of solar heat gain that is transmitted to the interior through the glass and shading system. Darker colors provide maximum glare reduction and visibility.

E Screen 7510 | 10% openness

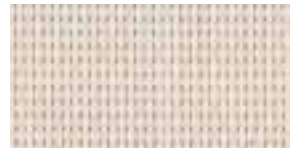
Fabric is also available in: 1% openness (see E Screen 7501, page 85)
 3% openness (see E Screen 7503, page 90)
 5% openness (see E Screen 7505, page 101)



WHITE / WHITE



WHITE / LINEN



LINEN / STONE



LINEN / LINEN



WHITE / PEARL



PEARL / LINEN



PEARL / PEARL



CHARCOAL / GRAY



CHARCOAL / BRONZE



CHARCOAL / CHARCOAL

Specifications

MAX. FABRIC WIDTH: 98.4"
 ROLL LENGTH: 30 yd
 FABRIC WEIGHT: 10.3 oz/yd²
 FABRIC THICKNESS: 0.022"
 OPENNESS FACTOR: 10%
 COMPOSITION: 64% vinyl, 36% fiberglass

UV BLOCKAGE: 90-91%
 FIRE CLASSIFICATION: NFPA 701-99 TM#1
 California U.S. Title 19, M1 NFP 92 503
 BREAKING STRENGTH: warp 290 lbs
 weft 280 lbs
 YARN DIAMETER: warp 56 ends/in
 weft 38 ends/in

COLOR	SOLAR OPTICAL PROPERTIES				SHADING COEFFICIENT	
	TS	RS	AS	TV	1/4 CL	1/4 HA
WHITE/WHITE	30	57	13	23	0.43	0.37
WHITE/LINEN	28	53	19	22	0.45	0.38
LINEN/STONE	31	43	26	23	0.52	0.42
LINEN/LINEN	24	48	28	19	0.47	0.39
WHITE/PEARL	24	47	29	20	0.48	0.39
PEARL/LINEN	24	39	37	19	0.53	0.42
PEARL/PEARL	26	32	42	20	0.57	0.45
CHARCOAL/GRAY	10	8	82	12	0.68	0.50
CHARCOAL/BRONZE	13	5	82	14	0.71	0.52
CHARCOAL/CHARCOAL	11	4	85	12	0.71	0.52

* Test results not yet available.

TS Solar Transmittance **1/8 CL** 1/8" Clear Glass
RS Solar Reflectance **1/4 CL** 1/4" Clear Glass
AS Solar Absorptance **1/4 HA** 1/4" Heat Absorbing Glass
TV Visual Transmittance

- The solar optical properties are used to calculate the shading coefficient.
- The shading coefficient represents the percentage of solar heat gain that is transmitted to the interior through the glass and shading system. Darker colors provide maximum glare reduction and visibility.

GlacierScreen HD1010 | 10% openness

Fabric is also available in:
 3% openness (see GlacierScreen HD1003, page 91)
 5% openness (see GlacierScreen HD1005, page 102)



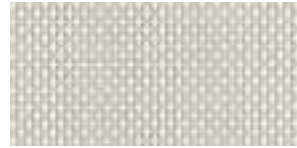
WHITE / WHITE



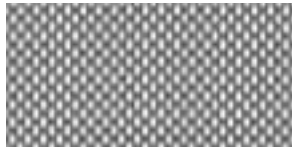
WHITE / LINEN



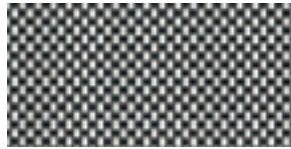
WHITE / SAND



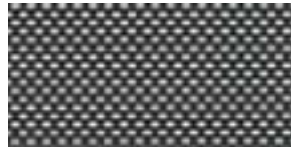
WHITE / PEARL



WHITE / GRAY



WHITE / BLACK



BLACK / PEARL



BLACK / BRONZE



BLACK / BLACK

Specifications

MAX. FABRIC WIDTH: 118"
 ROLL LENGTH: 32.8 yd.
 FABRIC WEIGHT: 16.3 oz/yd²
 FABRIC THICKNESS: 0.026"

OPENNESS FACTOR: 10%
 COMPOSITION: 78% vinyl, 22% polyester
 FIRE CLASSIFICATION: NFPA 701-2004 TM#1

COLOR	SOLAR OPTICAL PROPERTIES					SHADING COEFFICIENT WITH INSULATING		
	Ts	Rs	As	Tuv	Tv	1/8 CL	1/4 CL	1/4 HA
WHITE/WHITE	21	67	12	4	18	0.34	0.34	0.32
WHITE/SAND	22	45	33	12	22	0.50	0.48	0.40
WHITE/LINEN	28	57	15	12	27	0.43	0.42	0.37
WHITE/PEARL	25	50	25	12	24	0.47	0.46	0.39
WHITE/GRAY	16	35	49	11	18	0.55	0.53	0.42
WHITE/BLACK	15	25	60	11	18	0.62	0.59	0.45
BLACK/PEARL	14	18	68	12	19	0.69	0.66	0.49
BLACK/BLACK	12	4	84	12	18	0.75	0.71	0.52
BLACK/BRONZE	13	7	80	12	18	0.74	0.70	0.51

TS Solar Transmittance
RS Solar Reflectance
AS Solar Absorptance
Tuv Ultraviolet Transmittance
TV Visual Transmittance

1/8 CL 1/8" Clear Glass
1/4 CL 1/4" Clear Glass
1/4 HA 1/4" Heat Absorbing Glass

- The solar optical properties are used to calculate the shading coefficient.
- The shading coefficient represents the percentage of solar heat gain that is transmitted to the interior through the glass and shading system. Darker colors provide maximum glare reduction and visibility.



WHITE



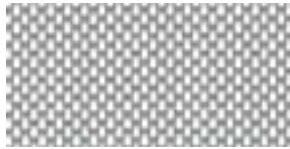
WHITE/BONE



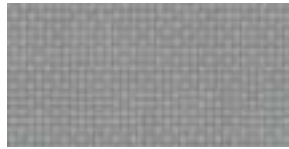
BONE



BONE/PLATINUM



WHITE/PLATINUM



PLATINUM



CHARCOAL/GRAY



BRONZE



CHARCOAL/CHESTNUT



CHARCOAL

Specifications

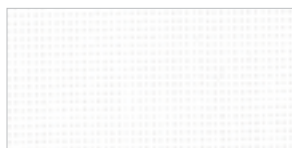
MAX. FABRIC WIDTH: 96"
ROLL LENGTH: 30 yd
FABRIC WEIGHT: 12.4 oz/yd²
FABRIC THICKNESS: 0.020"
OPENNESS FACTOR: 10%
COMPOSITION: 63% PVC on fiberglass,
 37% fiberglass
UV BLOCKAGE: 90%

FIRE CLASSIFICATION: California Title 19 (small scale), NFPA 701-99
 TM#1 (small scale), NFPA 101 (Class A Rating),
 UBC (Class I), ASTM-G21 and ASTM-G22
 (bacterial and fungal resistance)
BREAKING STRENGTH: warp 260 lbs
 fill 200 lbs
STIFFNESS: warp 200 Mg
 fill 240 Mg
YARN DIAMETER: warp 0.013"
 fill 0.013"

COLOR	SOLAR OPTICAL PROPERTIES				SHADING COEFFICIENT		
	TS	RS	AS	TV	1/8CL	1/4CL	1/4HA
WHITE	22	60	18	16	0.39	0.39	0.35
WHITE/BONE	19	54	27	14	0.43	0.42	0.36
BONE	19	44	37	15	0.50	0.48	0.40
BONE/PLATINUM	16	38	46	14	0.53	0.51	0.41
WHITE/PLATINUM	16	47	37	12	0.47	0.46	0.38
PLATINUM	10	31	59	9	0.59	0.54	0.43
CHARCOAL/GRAY	11	8	81	12	0.72	0.69	0.50
BRONZE	8	5	87	9	0.74	0.70	0.51
CHARCOAL/CHESTNUT	11	6	83	12	0.74	0.70	0.51
CHARCOAL	9	4	87	10	0.75	0.71	0.51

TS Solar Transmittance **1/8 CL** 1/8" Clear Glass
RS Solar Reflectance **1/4 CL** 1/4" Clear Glass
AS Solar Absorptance **1/4 HA** 1/4" Heat Absorbing Glass
TV Visual Transmittance

- The solar optical properties are used to calculate the shading coefficient.
- The shading coefficient represents the percentage of solar heat gain that is transmitted to the interior through the glass and shading system. Darker colors provide maximum glare reduction and visibility.



OYSTER



OYSTER/BEIGE



OYSTER/PEARL GRAY



BEIGE



BEIGE/PEARL GRAY



PEARL GRAY



CHARCOAL/GRAY



CHARCOAL/CHESTNUT



CHARCOAL

Specifications

MAX. FABRIC WIDTH: 98"
 ROLL LENGTH: 30 yd
 FABRIC WEIGHT: 10.5 oz/yd²
 FABRIC THICKNESS: 0.017"
 OPENNESS FACTOR: 10%
 COMPOSITION: 63% PVC on fiberglass,
 37% fiberglass
 UV BLOCKAGE: 90%

FIRE CLASSIFICATION: California Title 19 (small scale), NFPA 701-99
 TM#1 (small scale), NFPA 101 (Class A Rating),
 UBC (Class I), ASTM-G21 and ASTM-G22
 (bacterial and fungal resistance)
 BREAKING STRENGTH: warp 255 lbs
 fill 180 lb.
 STIFFNESS: warp 225 Mg
 fill 200 Mg
 YARN DIAMETER: warp 0.011"
 fill 0.011"

COLOR	SOLAR OPTICAL PROPERTIES				SHADING COEFFICIENT WITH					
	TS	RS	AS	TV	SINGLE			INSULATING		
					1/8 CL	1/4 CL	1/4 HA	1/2 CL	1 CL	1 HA
OYSTER	27	57	16	21	0.43	0.42	0.36	0.39	0.38	0.29
OYSTER/BEIGE	24	51	25	19	0.46	0.45	0.38	0.43	0.41	0.31
OYSTER/PEARL GRAY	20	45	35	16	0.49	0.48	0.40	0.46	0.44	0.32
BEIGE	19	44	37	16	0.50	0.48	0.40	0.46	0.44	0.32
BEIGE/PEARL GRAY	17	39	44	15	0.53	0.51	0.41	0.49	0.46	0.34
PEARL GRAY	16	30	54	14	0.59	0.56	0.44	0.55	0.51	0.36
CHARCOAL/GRAY	12	8	80	14	0.73	0.69	0.51	0.68	0.62	0.42
CHARCOAL/CHESTNUT	11	5	84	12	0.74	0.70	0.51	0.69	0.63	0.43
CHARCOAL	10	4	86	11	0.75	0.71	0.52	0.70	0.64	0.43

TS Solar Transmittance 1/8 CL 1/8" Clear Glass
 RS Solar Reflectance 1/4 CL 1/4" Clear Glass
 AS Solar Absorptance 1/4 HA 1/4" Heat Absorbing Glass
 TV Visual Transmittance

- The solar optical properties are used to calculate the shading coefficient.
- The shading coefficient represents the percentage of solar heat gain that is transmitted to the interior through the glass and shading system. Darker colors provide maximum glare reduction and visibility.

SheerWeave 2710

10% openness

Fabric is also available in: 1% openness (see SheerWeave 2701, page 88)
 3% openness (see SheerWeave 2703, page 96)
 5% openness (see SheerWeave 2705, page 108)



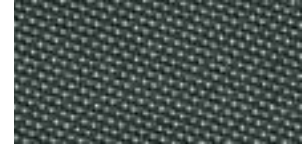
OYSTER



OYSTER/BEIGE



OYSTER/PEWTER



OYSTER/CHARCOAL



OYSTER/CHESTNUT

Specifications

MAX. FABRIC WIDTH: 63", 98.4"
 ROLL LENGTH: 30 yd
 FABRIC WEIGHT: 10.4 oz/yd²
 FABRIC THICKNESS: 0.025"
 OPENNESS FACTOR: 10%

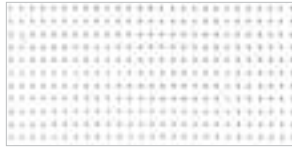
COMPOSITION: 64% PVC, 36% fiberglass
 UV BLOCKAGE: 90%
 FIRE CLASSIFICATION: NFPA 701-04 TM#1, TM#2
 California U.S. Title 19
 BREAKING STRENGTH: warp 280 lbs
 fill 220 lbs

COLOR	SOLAR OPTICAL PROPERTIES				SHADING COEFFICIENT		
	TS	RS	AS	TV	SINGLE		
					1/8 CL	1/4 CL	1/4 HA
OYSTER	34	54	12	32	0.46	0.45	0.38
OYSTER/BEIGE	29	51	20	28	0.47	0.46	0.39
OYSTER/CHARCOAL	21	37	42	24	0.55	0.53	0.42
OYSTER/PEWTER	24	43	33	25	0.52	0.50	0.41
OYSTER/CHESTNUT	25	41	34	26	0.53	0.52	0.42

* Test results not yet available.

TS Solar Transmittance **1/8 CL** 1/8" Clear Glass
RS Solar Reflectance **1/4 CL** 1/4" Clear Glass
AS Solar Absorptance **1/4 HA** 1/4" Heat Absorbing Glass
TV Visual Transmittance

- The solar optical properties are used to calculate the shading coefficient.
- The shading coefficient represents the percentage of solar heat gain that is transmitted to the interior through the glass and shading system. Darker colors provide maximum glare reduction and visibility.



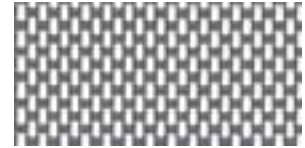
CHALK



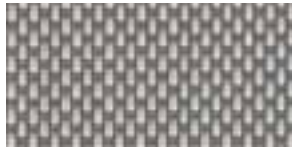
ALABASTER



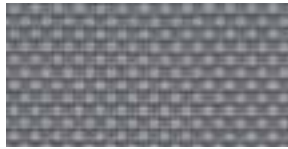
PEBBLESTONE



GRANITE



GRAYSTONE



PEWTER



ASH



TOBACCO



EBONY

Specifications

MAX. FABRIC WIDTH: 98"
ROLL LENGTH: 30 yd
FABRIC WEIGHT: 17.5 oz/yd²
FABRIC THICKNESS: 0.035"
OPENNESS FACTOR: 10%
COMPOSITION: 75% PVC on polyester,
25% polyester
UV BLOCKAGE: 90%

FIRE CLASSIFICATION: NFPA 701 (small scale)
BREAKING STRENGTH: warp 315 lbs
fill 230 lbs
STIFFNESS: warp 600 Mg
fill 350 Mg
STRETCH: warp 1.0%
fill 8.0%
YARN DIAMETER: 0.020"

COLOR	SOLAR OPTICAL PROPERTIES				SHADING COEFFICIENT WITH					
	TS	RS	AS	TV	SINGLE			INSULATING		
					1/8CL	1/4CL	1/4HA	1/2 CL	1CL	1HA
CHALK	18	66	16	15	*	0.34	0.32	*	0.32	0.25
ALABASTER	19	56	25	16	*	0.41	0.36	*	0.38	0.29
PEBBLESTONE	16	48	36	15	*	0.45	0.38	*	0.41	0.31
GRANITE	15	42	43	14	*	0.49	0.40	*	0.29	0.23
GRAYSTONE	14	35	51	14	*	0.53	0.42	*	0.48	0.34
PEWTER	12	26	62	14	*	0.58	0.45	*	0.53	0.37
ASH	10	10	80	11	*	0.67	0.50	*	0.42	0.31
TOBACCO	10	5	85	11	*	0.70	0.51	*	0.45	0.32
EBONY	10	4	86	11	*	0.71	0.52	*	0.64	0.43

*Test results not yet available.

TS Solar Transmittance
RS Solar Reflectance
AS Solar Absorptance
TV Visual Transmittance
1/8 CL 1/8" Clear Glass
1/4 CL 1/4" Clear Glass
1/4 HA 1/4" Heat Absorbing Glass

- The solar optical properties are used to calculate the shading coefficient.
- The shading coefficient represents the percentage of solar heat gain that is transmitted to the interior through the glass and shading system. Darker colors provide maximum glare reduction and visibility.

SheerWeave 3000 | 14% openness



PEARL WHITE



MUSHROOM SAND



CUSTARD CREAM



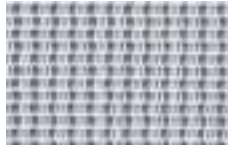
SAND DOLLAR



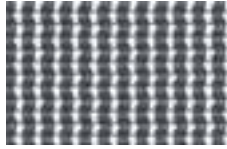
HONEY SAGE



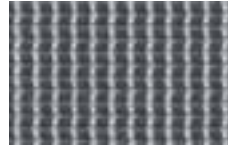
HARVEST WHEAT



PALE GRAY



SPANISH GRAY



DUSTY GRAY



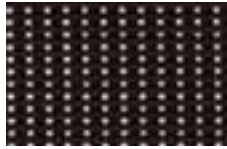
MOSSY GREEN



NINJA GRAY



ESPRESSO



CHOCOLATE

Specifications

MAX. FABRIC WIDTH: 96"
ROLL LENGTH: 30 yd
FABRIC WEIGHT: 13.46 oz/yd²
FABRIC THICKNESS: 0.028"
OPENNESS FACTOR: 14%
UV BLOCKAGE: 86%

COMPOSITION: 65% PVC on fiberglass, 35% fiberglass
 69% PVC on polyester, 31% polyester
FIRE CLASSIFICATION: NFPA 701-99 TM#1 (small scale), CCC-C-521E (type 11 fiberglass), A-A150, ASTM-G21 and ASTM-G22 (bacterial and fungal resistance)

BREAKING STRENGTH: warp 250 lbs
 fill 262 lbs
STIFFNESS: warp 291 Mg
 fill 318 Mg
STRETCH: warp 0.7%
 fill 0.8%
YARN DIAMETER: warp 0.011"
 fill 0.022"

COLOR	SOLAR OPTICAL PROPERTIES				SHADING COEFFICIENT		
	TS	RS	AS	TV	1/8CL	1/4CL	1/4HA
PEARL WHITE	24	62	14	20	0.38	0.38	0.34
MUSHROOM SAND	23	46	31	21	0.49	0.48	0.40
CUSTARD CREAM	24	52	24	22	0.45	0.44	0.38
SAND DOLLAR	26	40	34	24	0.54	0.52	0.42
HONEY SAGE	22	28	50	22	0.62	0.59	0.45
HARVEST WHEAT	19	16	65	20	0.69	0.66	0.49
PALE GRAY	20	42	38	19	0.51	0.50	0.41
SPANISH GRAY	14	25	61	15	0.62	0.59	0.45
DUSTY GRAY	16	17	67	16	0.68	0.64	0.48
MOSSY GREEN	18	16	66	20	0.69	0.65	0.49
NINJA GRAY	14	10	76	16	0.72	0.68	0.50
ESPRESSO	19	8	73	21	0.74	0.70	0.52
CHOCOLATE	14	5	81	17	0.75	0.71	0.52

TS Solar Transmittance
RS Solar Reflectance
AS Solar Absorptance
TV Visual Transmittance

1/8 CL 1/8" Clear Glass
1/4 CL 1/4" Clear Glass
1/4 HA 1/4" Heat Absorbing Glass

- The solar optical properties are used to calculate the shading coefficient.
- The shading coefficient represents the percentage of solar heat gain that is transmitted to the interior through the glass and shading system. Darker colors provide maximum glare reduction and visibility.