



Acoustic-CompactLine®

Installation Instructions

Contents

... when it matters!

1	Handling-information	3
1.1	Material inspection	3
1.2	Transport, storage and installation	3
1.3	Maintenance and Cleaning	3
1.3.1	Basic information	3
1.3.2	Cleaning	3
2	Product description Acoustic-CompactLine	4
3	The installation of Acoustic-CompactLine	4
3.1	Installation with panel-claws	4
3.2	Installation with staple gun	5
3.3	Horizontal installation	5, 6
3.4	Vertical installation	6
3.5	Corner Installations	7

These instructions show typical conditions in which the Richter akustik & design GmbH & Co. KG product depicted is installed. They are not a substitute for an architect's or engineer's plan and do not reflect the unique requirements of local building codes, laws, statutes, ordinances, rules and regulations (Legal Requirements) that may be applicable for a particular installation.

Richter akustik & design GmbH & Co. KG and/or Richter US do not warrant, and assumes no liability for the accuracy or completeness of the suggested installation methods and drawings for a particular installation or their fitness for a particular purpose. The user is advised to consult with a duly licensed architect or engineer in the particular locale of the installation to assure compliance with all Legal Requirements. Richter akustik & design GmbH & Co. KG and/or Richter US are not licensed to provide professional architecture or engineering design services.

Richter akustik & design GmbH & Co. KG
St.-Annener-Str. 117
49326 Melle
Tel.: 05428 – 9420-0 Fax: -30
www.richter-akustik-design.de

1 Handling-information

1.1 Material inspection

Carefully inspect the packages/crates for any damage that may have happened during transport. If damage is found report it immediately to the freight carrier.

1.2 Transport, storage and installation

Acoustic-CompactLine® is classified as a "non hazardous" material and should be **stored** and **installed** under normal climatic conditions (approx. 18-25 °C [64-77 °F] and 40-65% relative humidity). Storage and installation outside of this climate range can cause damage or variations of the material. Always transport and store panels flat and not upright or on end. A pallet containing Acoustic-CompactLine® can be covered with a clean drop cloth or equivalent as long as it is porous enough to allow continuous aeration and will not harm the finish on the surface of the panels. Acoustic-CompactLine® is designed and manufactured using natural and engineered wood products. Although dimensionally stable it is still acceptable to expansion and contraction when exposed to environmental variables. Installation only after proper acclimatization of the panels on site 24 to 72 hours prior to installation. The site must be free of wet and/or dusty trades and the climate conditions stabilized to normal operational levels. In case of incorrect transport or storage Richter akustik & design will not honor and warranty claims.

1.3 Maintenance and Cleaning

1.3.1 Basic information

Acoustic-CompactLine® finishes of High Pressure Laminate (HPL) and natural wood veneer are easily maintained. The wood veneer surfaces are finished at the factory with a catalyzed lacquer. To preserve the integrity of the finished surface it should be maintained like a piece of furniture. A light dusting and a gentle application of furniture polish will keep the wood veneer surfaces looking like new. When using a furniture polish apply it to your dusting cloth first and then gently wipe the surfaces. For High Pressure Laminate no maintenance is required.

1.3.2 Cleaning

Acoustic-CompactLine® products may be cleaned with a damp cloth and mild detergent as required. If in doubt about the suitability of a particular cleaner or detergent, check with its manufacturer. This applies to both the wood veneer and the high pressure laminate finishes. Always test your cleaning agent and method of application on an inconspicuous area to determine if any harm will be done to the Acoustic-CompactLine® finished surfaces. Always follow the manufacturer's recommendations and cautions for any cleaners. Use of abrasive cleaners, powders, scouring pads, steel wool, sandpaper, etc., can damage the finish of the surface and are not recommended. Acid or alkaline-based cleaners, compounds, etc., will mar, etch, corrode, and permanently discolor the finished surface. Never use these materials on Acoustic-CompactLine® products nor allow bottles, rags, etc., contaminated with these chemicals to contact the surface. Accidental spills or splatters from these harsh materials should be wiped off immediately, and the area cleaned thoroughly with a damp cloth.

2 Product description Acoustic-CompactLine

The universal profile of Acoustic-CompactLine® (ACL) offers many opportunities. ACL can be installed vertically or horizontally.

Acoustic-CompactLine® has another advantage:

The tongue and groove edges have the same look as the slots on the ACL. When installed the surface has one continual appearance with no visible joints.

3 The installation of Acoustic-CompactLine®

Before starting the installation the substrate needs to be checked for any damages in plaster, mold and any damages caused by humidity. If found, repair prior to installation of ACL.

Ventilation space behind the panels is necessary. The minimum distances are:

- 1.) interior walls a minimum of 30 mm [1.18"].
- 2.) external walls and chimneys 50 mm [1.97"].

Ceiling suspensions/mountings must also have adequate ventilation.

Using a cut edge of a panel the segment of the last slat can be used as first in the next row. Maintain a reveal of 40 mm (1.57") for a continual equal spacing of the slats.

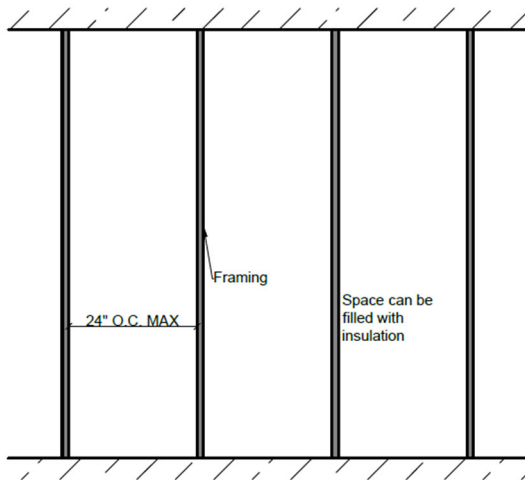


Illustration 1 Orientation of the substructure for horizontal assembly

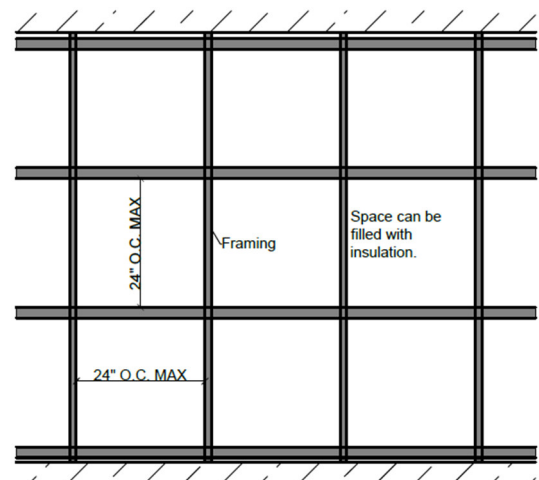
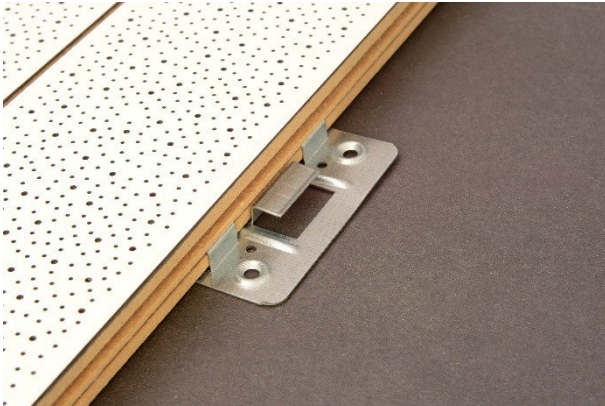


Illustration 2 Orientation of the substructure for vertical assembly

3.1 Installation using panel-claws



The Acoustic-CompactLine® profile offers an option to the tongue and groove edges. An optional factory machining for the use of panel claws.

If the panels are assembled in a vertically their weight must be supported behind the panels. One example is with wall cleats.

Illustration 3 ACL with panel claw

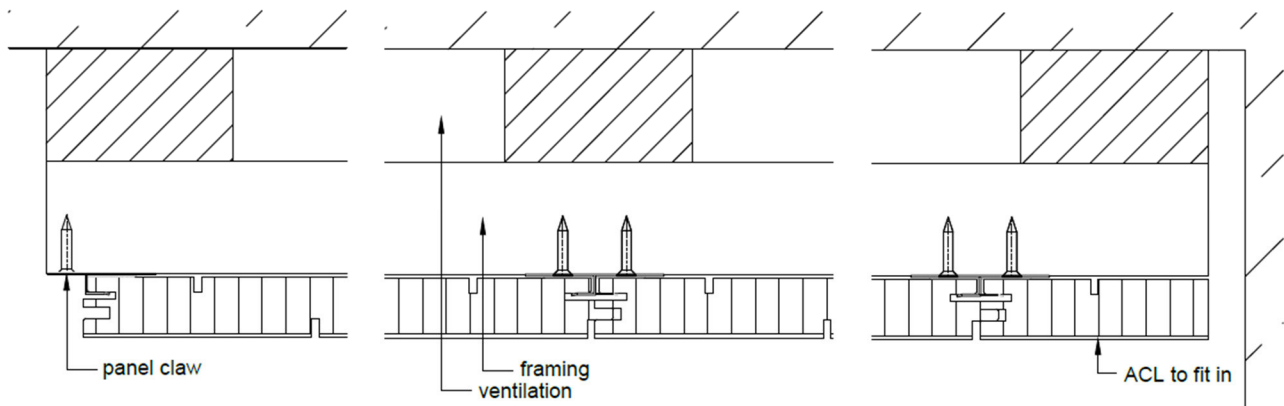


Illustration 4 Horizontal cut of a vertical assembly with panel claws

3.2 Installation with staple gun

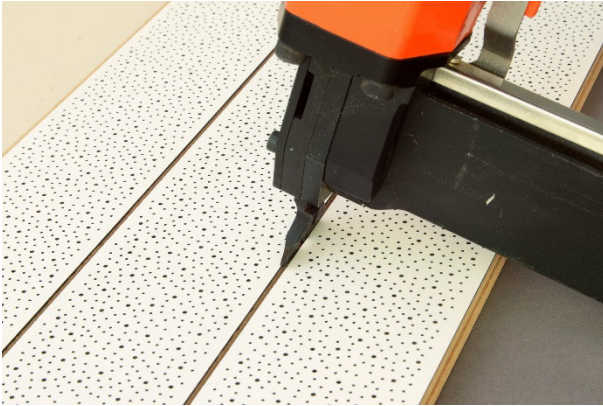


Illustration 5
Shooting Acoustic-CompactLine in the notches from the front

The first and last slat can be fixed by shooting the staples in the notches on the front side with a special attachment.

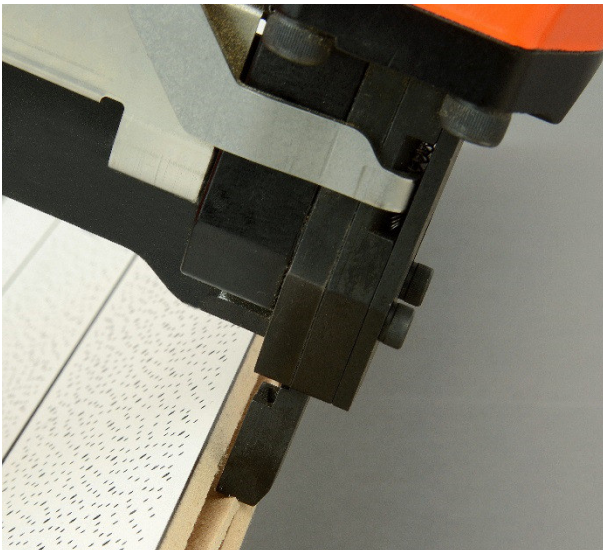


Illustration 6 Shooting through the cheek

The mounting of the following slats is realized by shooting through the cheek of the notch with the normal attachment.

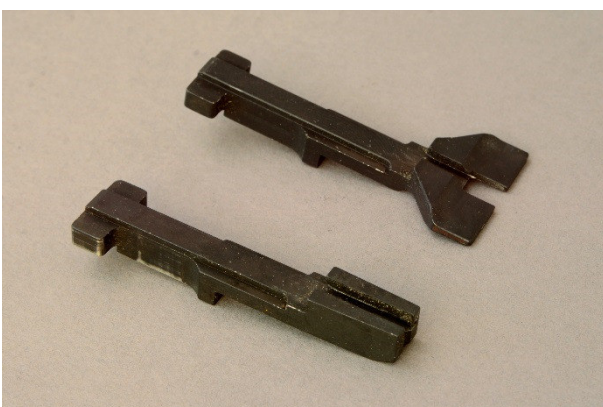


Illustration 7 Photographs of the 2 different attachments
above: Acoustical attachment
below: Standard attachment

Most staple guns have two different attachments:

- A slim acoustical attachment for shooting in the notches on front side.
- A standard attachment for fixing the slats through the cheek

3.3 Horizontal installation

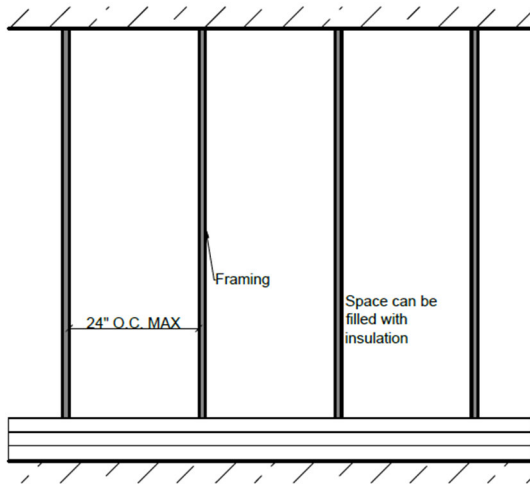


Illustration 8 Installation of the starting row.

At the start of the installation it is necessary to install the first row of slats being perfectly level. If you attach the panels with the help of panel claws the tongue should be on the top in the horizontal direction. Using a staple gun the groove should be on top.



Please Note:

If the first row is not installed level every subsequent row will also be out of level/alignment.

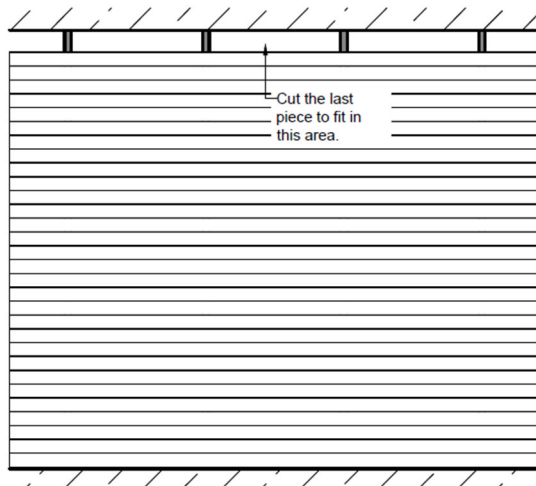


Illustration 9 Installation of the Acoustic-Compactline slats.

Each slat is inserted into the previous one and attached with either panel claws or a staple gun.

The gap in between the last slats and the ceiling is measured and the slat is cut to fit the remaining opening. If you cannot attach the last row using panel claws or staples construction adhesive will work.



Please note:

Allow a 2 mm (5/64") gap in-between the last slat and the ceiling for ventilation.

3.4 Vertical assembly

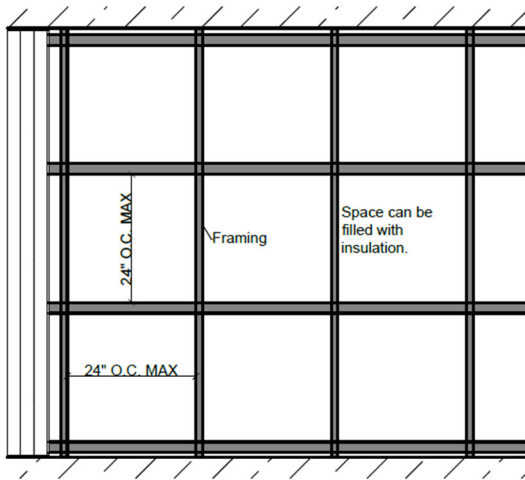


Illustration 10 Installation of the starting slat.

At the start of the installation it is necessary to adjust the first row of slats for plumb and level. If you attach the panels with the help of panel claws the tongue should show in the vertical direction. Using a staple gun the groove should show.



Please Note:

If the first row is not installed level every subsequent row will also be out of level/alignment.

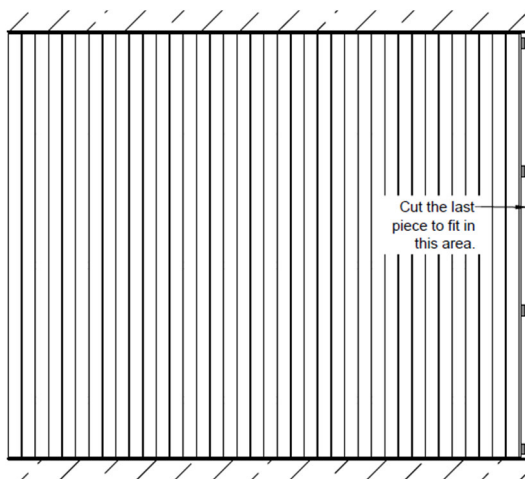


Illustration 11 Installation of the Acoustic-Compactline slats.

The gap in between the last vertical slats and the adjoining surface is measured and the slat is cut to fit the remaining opening. If you cannot attach the last row using panel claws or staples construction adhesive will work.



Please note:

Allow a 2 mm (5/64") gap in-between the last slat and the adjoining surface for ventilation.

3.5 Corner Installations

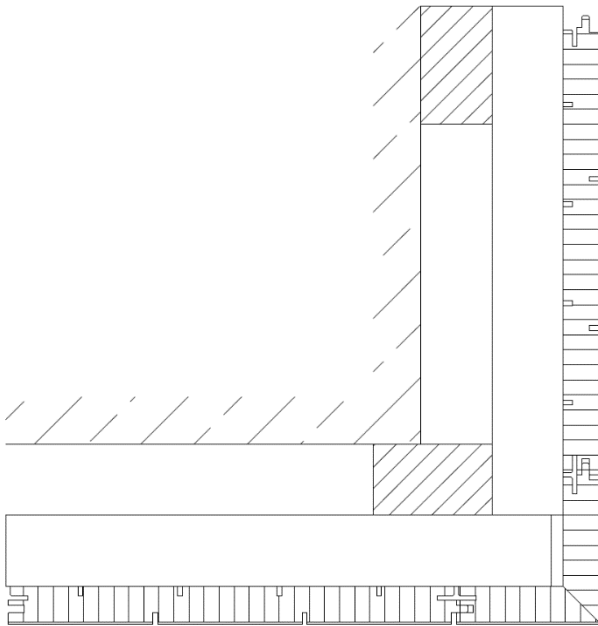


Illustration 12 External corner with Acoustic-CompactLine

Acoustic-Compactline® is easy to assemble thanks to the tongue and groove edge profiles. Internal or external corner – it does not matter.

The corresponding corner profiles can be obtained from us as an accessory or can be produced by the purchaser with standard woodworking equipment.

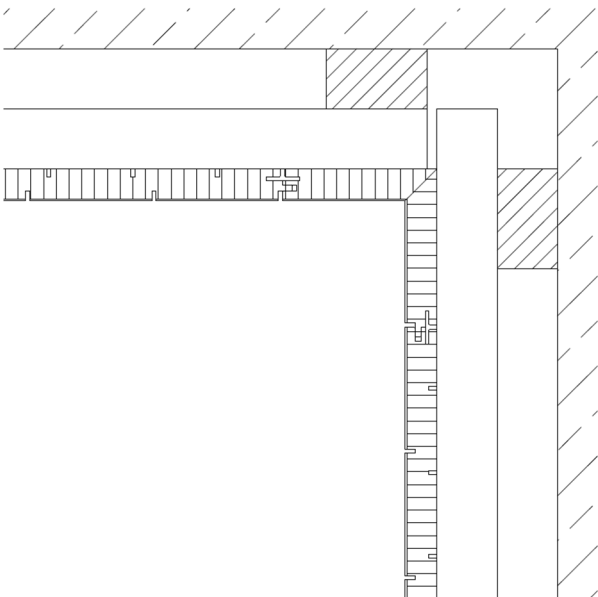


Illustration 13 Internal Corner with Acoustic-CompactLine