



INSTRUCTIONS

Marble Countertop Kit - Covers 35 Sq. Feet

BEFORE USING GIANI MARBLE



WATCH OUR HOW-TO VIDEOS!

Visit gianigranite.com and select the "Videos" link on the top menu. Watch our videos and read through all of the instructions prior to starting your project, as they are meant to make your transformation quicker and easier!



LIVE CHAT WITH US!

Have a question? We're here to help! Chat with us Mon. through Fri. 7AM to 3:30PM CST on gianigranite.com. Just look for the chat bubble at the bottom right corner. You can also reach us by email at info@gianigranite.com

CAN BE USED ON

- Formica®
- Laminate
- Primed Plastic
- Wood*
- Cultured Marble*
- Real Granite**
- Corian®*
- Backsplashes
- Fireplace Mantels
- Metal*
- Ceramic Tiles*
- Real Concrete**

Additional items you will need:

- Tweezers to remove any fallen dust or lint during application.
- Acrylic caulk or Silicone caulk infused with Latex or Acrylic for sealing.
- Painter's Tape.
- Paper towels for clean up.
- Paint tray.
- Step stool for hard to reach places.
- Safety glasses to avoid accidental eye contact.
- SOS® or Brillo® scouring pad for countertop prep.

* De-gloss with a very fine #300 grit sandpaper, then wipe clean with a damp cloth. For unsealed wood, apply a good, water-based wood primer before applying the Primer. Apply the wood primer with a foam roller for smooth finishes because thicker nap rollers will leave a textured finish. Continue with standard prep instructions.

** For granite and concrete that are fully cured, clean the surface with xylene or lacquer thinner, and then wipe-up with rubbing alcohol before applying the Primer. Follow with standard prep instructions. Please note, xylene and lacquer thinner are very flammable!

DO NOT use Giani Marble on tubs, flooring, or shower doors/floors. DO NOT use Giani Marble if any paint or epoxy appears frozen or damaged. You MUST measure your counters before applying Giani. DO NOT use a single kit on a surface larger than 35 sq. feet.

SURFACE PREP



Remove any silicone or acrylic caulk from your countertop or attached backsplash. Carefully trim the adhesive away with a box cutter or knife, and peel the remainder from the seam.

Note: Clean up caulk residue with rubbing alcohol.



Use a scouring pad, such as an SOS® or Brillo® pad, to remove grease and dirt. DO NOT use any other cleaners. Rinse with water, at least twice, to remove all cleaner residue.

Note: It is NOT necessary to sand as the scouring pad will rough up the surface.



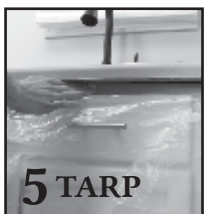
Patch deep nicks and seams with wood filler. Giani Marble will cover up thin, shallow scratches. Once dry, sand the wood patch smooth with a #300 fine grit sandpaper. Wipe up the dust with a damp cloth.

Giani Marble will level shallow textured surfaces due to its thickness and self-leveling properties.



Using a high quality painter's tape, such as Frog® Tape, protect the following areas of your project work space:

- Above backsplash or exposed walls (**see Note 1**)
- Around cooktops and ovens
- Under the edge of your countertops (**see Note 2**)



Use the included plastic tarps to cover your lower cabinets, floors, appliances, sink, faucets, and fixtures (**see Note 3**).

This will protect against spills and drips, and to allow the Epoxy Resin Topcoat to self-level over the edge of your countertop.

Note 2: Leave a 1/8" gap between the tape and the edge of your counters. This will safeguard against the buildup of kit materials and forming a small ledge.

Note 3: Use painter's tape to tape the edges of your sink. Then cut a small section of one included tarp, to cover your sink, faucet and fixtures. Cut another small section of one included tarp and cover any appliances in your work area such as an oven or cooktop.

Note 1: Apply 2 layers of tape directly to your backsplash or walls. If you have an attached backsplash, use the painter's tape to protect the walls above them from contact with the kit materials. You will be able to remove any accidental exposure to the kit's materials when they are wet, but it is much more difficult to clean up when fully cured.



STEP 1: WHITE BASE PRIMER



After stirring the White Base Primer well, pour about half of the contents into your painter's tray. Use the Foam Brush to cut in around creases, corners, and edges, and use the roller with the Fabric Cover to fill in the rest. Edge in 2 or 3-foot sections at a time and then immediately roll that section so your brush strokes blend in with the rolled areas.

IMPORTANT: The Foam Roller Covers should be saved for the Epoxy Topcoat application.



If you have a connected backsplash, we recommend using the Foam Brush for the first coat, and the roller for the second. It will be easier to establish the base with the brush, especially when there are obstacles like a sink. Using the roller for the second coat will give you total, even coverage of the primer.

Move onto the next section, blending it with the previous section while both are still wet. Repeat until the entire countertop is covered. Make sure to work quickly and keep a wet edge so as not to create lap lines. Allow the primer to dry for at least an hour. The first coat may look streaky or uneven, but you will reach full coverage when you apply the second coat.



Once dry, repeat the same steps to apply the second coat, and allow to dry for an hour. **NOTE:** You will need 2 coats to cover most surfaces, but for darker colored countertops, you may need a third.

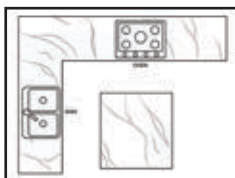
After applying the second coat, if you notice any spots that you missed, first allow the countertops to completely dry before touching them up with the Foam Brush. **Allow primer to dry for a minimum of 2 hours before applying veins.**

RESEARCH & PLANNING



While the primer is drying, we recommend researching some online examples of marble and marble countertop finishes. This will give you an idea of the variations in vein styles. You don't have to emulate them exactly with your countertops, but it does help to have some visual references.

Seeing images of existing countertops will help give you an idea of how your veins should flow, and determine how decorative you would like the finish. Most marble tends to have large areas of white, cut by occasional thin, dark veins or flows.

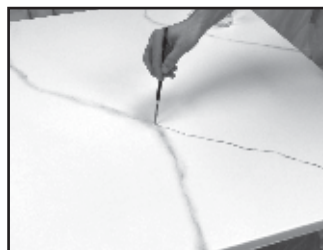


After you've finished your research, spend some time mapping out the direction you want your veins to flow. It helps to draw the basic layout of your countertops and create a guideline for your veins. Don't worry about it being perfect - this is a tool to help you plan where you want to place your veins. Most marble veins tend to flow in the same general direction. You don't want your flows crisscrossing in opposite directions, or have so many veins that you create a zebra pattern. Planning out your major veins first will allow you to go back after you've completed them and evaluate how many accent veins you would like to add.



Finally, grab your kit's included White Practice Board, and try out the vein application before painting directly onto your countertops. You won't be able to manipulate the paint in the exact same way, but it will allow you to practice how to hold your brush, apply the Grey Veining Mineral, how much water to use for your veins, and softening techniques. Keep your veins thin when applying them. By misting them with enough water and softening them with the 2" Brush, you can control the width and the strength.

STEP 2: GREY VEIN MINERAL



Before you begin, please note that this process is not necessarily difficult, but it does take some practice and patience. Be sure to take a step back every once in a while to see how your veins look from a distance. It can be easy to feel overwhelmed by the amount of white space that you'll be working with. It can also be tempting to fill in every single space with veins. To maintain just the right balance of white space and veins, we recommend 2 or 3 major veins per 3-foot section.

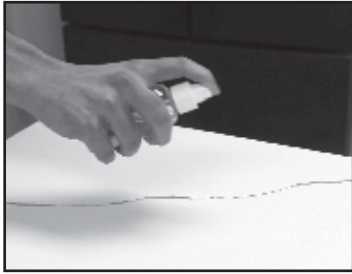
If you don't like how a vein looks, or have multiple veins that aren't consistent with your desired look you can easily repair that section and re-create your veins (**see the COMMON MISTAKES section of this guide**).

Remember, if you have questions or concerns, we're a phone call, email, or Live Chat away from lending a hand. Just let us know what you need help with, and we can guide you through the process.



After shaking the Grey Veining Mineral can well, fill your Misting Bottle with water and grab the kit's included Artist's Brush. When loading the brush with paint, we recommend coating the bristles with the Grey Mineral.

Begin your first vein by gently holding the Artist Brush, and lightly drag the gray veining mineral across the surface of your countertop. Slightly twist your brush as you drag to emulate the flows of natural marble. Try not to paint perfectly straight diagonal lines, and keep your vein as thin as possible. And if the weight of your vein starts off uneven, or if it's broken in some sections, no worries, the variation adds to the character and creates a more genuine look.



Keep your references handy, but try not to get hung up on making the veins exactly like your found examples. Just work toward the general idea. You'll have more control over the look and weight of your veins with the spray bottle and the 2" Brush.

Then mist your vein with water from about 12" away using the kit's Misting Bottle. You'll know when you've used enough water when the gray mineral starts to bleed.

Next, lightly dab your vein using a dry 2" Brush. You'll notice that the edges of your vein will start to fade into the white background, creating the characteristic mineral foundations of natural marble. In addition to dabbing your veins to soften them, you can also experiment by gently brushing back and forth over the vein to create a feathered effect, or using the 2" Brush to push the mineral paint to re-shape your veins.

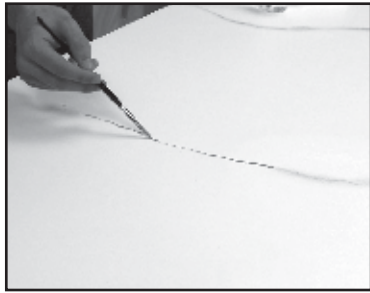
TIP: As you soften your veins, be sure to wipe off any excess moisture from your Brush every so often by blotting it with a paper towel. You can also blot your surface with a paper towel to remove excess water after misting your veins.



A GUIDE TO VEIN STYLES

We've chosen 4 vein styles to show you. These are the most common types that we have found in samples of natural marble. You will use the same basic techniques described above to adjust your vein styles.

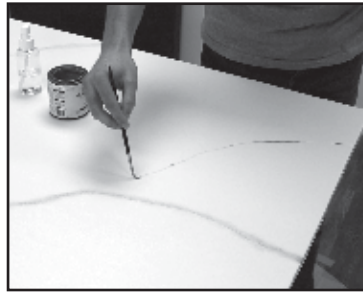
EXTENDED VEIN



For sections of countertop that require long, continuous veins, like on an island, it's easier to break the veins into segments.

Mist each segment individually, apply your softening techniques and blend each segment so that they appear as one, connected vein.

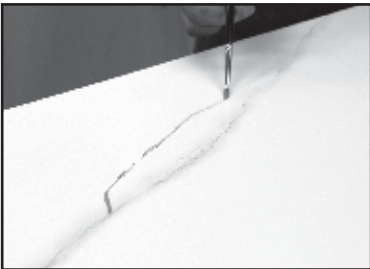
Y-VEIN



Start with a vein that you've already created, preferably one that is pretty simple. From one end of the vein, create a new vein that branches off to form a Y or an upside-down Y.

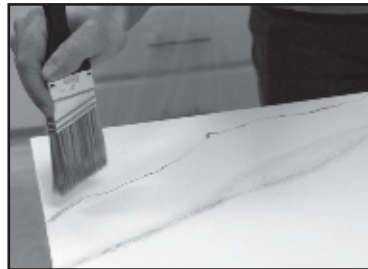
Use your softening techniques to blend the sections together.

CRESCENT VEIN



Start with a vein that has a curved segment. Then, on the inside of the curved portion, create another mirror-image curve and connect. When finished, it should look like a loop.

RIPPLE VEIN



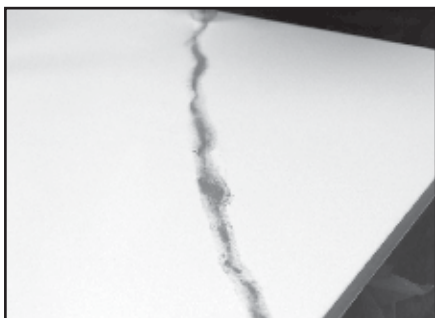
Create the rippled effect by painting a parallel vein a few inches away from another vein, following its curves.

You can choose to either connect the ripple to its partner, or run parallel all the way to the edge of your countertop.

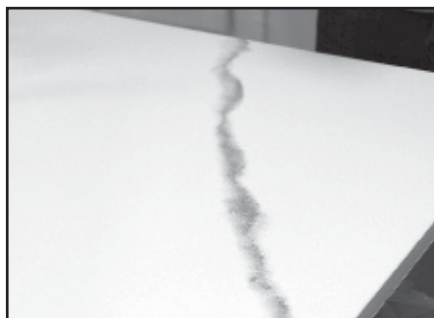
Don't forget that you can also create veins that are simple, without using the variations from the styles above. For the most authentic look, we find that less is truly more. Keep your found examples and your vein map close by and use them as your guides.

COMMON MISTAKES

Too Bold



Too Bold & Choppy

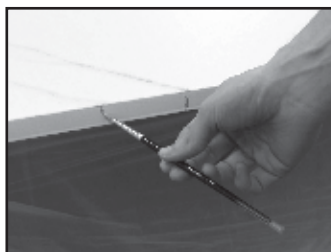
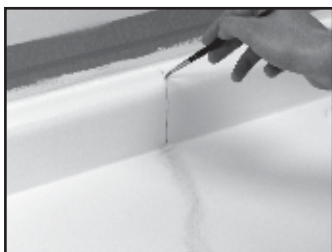


Too Straight



Try to keep your veins thin and fluid rather than bold and choppy, and don't forget to create some variation in your line by twisting and wiggling your Artist's Brush. Also, when blending, use light pressure so you don't lose the structure of your veins. If you're not happy with the way a vein looks, or if you don't like the placement, simply mist it enough times to flood the area with water and wipe it away. Start fresh, or move on to another section of your countertop. **IMPORTANT:** Once a vein is dry, it will be harder to remove with water. However, if you don't like a vein that has already dried, simply prime over the vein with a little of the White Base, allow it to dry, and re-create your vein.

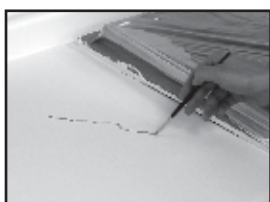
BACKSPLASH & EDGES



For backsplash veins, use the veins you've already created on the main countertop surface and connect. Be sure to follow the direction of the vein for a more natural appearance. Do not over spray the water and watch for any runs or drips!

On the edges, carry the direction of the vein in its natural flow, just like a slab of real marble.

ACCENT VEINS & HIGHLIGHTS



Accent Veins:

Now that your major veins are complete, take a step back to see if you'd like to create more depth by adding accent veins. Accent veins should be supplements and shouldn't distract from your major veins. We recommend one accent vein per 3 or 4 -foot section. Keep in mind, if you add too many, don't like the placement of the vein, or don't like its shape, you can always flood the vein with water using the Misting Bottle and wipe the vein away.

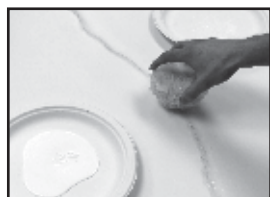
Creating accent veins follows the same process as your major veins. Start by using the same techniques to make thin, wispy strokes, and thoroughly wet with the misting bottle. Then feather and dab the area, over-blending until it looks faded or shadowy.

TIP: If your accent veins become too wide, you can always spray liberally with water and use the brush to push the paint inward toward the center of the vein to create a more defined line.



White Highlights:

After stirring the White Highlight Mineral thoroughly, pour a small amount onto a paper plate. Your kit includes a specialized Gianni sponge, and depending on what is comfortable, you can either cut your sponge in half for a smaller portion or use it as is. Lightly dab your sponge into the White Highlight paint and dab any off excess onto a clean paper plate. Lightly sponge on white flecks in areas on or around your veins for some added depth.



Allow your veins and highlights to dry for at least 4 hours before moving on to the next step. While you wait, bring all 3 sets of the Epoxy Topcoat into the room and allow them to acclimate to the ambient temperature.

STEP 3: EPOXY RESIN TOPCOAT

STOP! Did you measure your counters? Extending the epoxy beyond 35 sq. feet will result in imperfections and void the warranty.

APPLYING GIANI EPOXY RESIN TOPCOAT IS TIME SENSITIVE. Read all instructions carefully and watch the application videos on our website before beginning this step. **Also, please review the included Safety Data Sheet (SDS) prior to use.**

If you're applying the Epoxy Resin Topcoat over an existing Giani High-Gloss or Glitter Topcoat finish, then it must be fully cured for 14 days prior to using the epoxy. If you have any blemishes in your current finish, repair them before applying the epoxy.

PREP WORK



1 MINIMIZE

Minimize the movement of air within your workspace to keep dust, lint, and other contaminants from falling into the epoxy.

- Close windows and exterior doors
- Turn off all fans
- Close floor and ceiling HVAC vents
- Close off your work space if possible



2 RESTRICT

Restrict access to your workspace. Make sure to keep the area free of pets and children to minimize accidental contact with the epoxy. **TIP:** Post signs around your workspace announcing that your countertops are wet and should not be used until the surface has cured for at least 48 hours.



3 CLEAN

If you're applying the Ultra Epoxy Resin over an existing Giani Topcoat, then thoroughly clean the finish with mild dish soap and water. Do NOT use any other cleaners. If you're applying the epoxy topcoat over a new mineral or veining application, then there is no need to clean.



4 TAPE

Using painter's tape, create "dams" on the edge of your countertops that are next to appliances. Firmly press the sticky side of the tape against the edge of the countertop with about a half-inch of the adhesive side sticking up. This will protect appliances and prevent the epoxy mixture from falling off the edge of your countertops, allowing it to properly self-level.

MIXING THE COMPONENTS

IMPORTANT NOTE ABOUT CURING: Once the Epoxy Resin Topcoat components have been mixed, the reaction cannot be stopped. The topcoat comes in 3 sets. Each set contains 2 cans: one can of Activator and one can of Resin. The amounts are designed so that the contents of the Epoxy Activator will fit perfectly into the Epoxy Resin can. The set is provided to give plenty of time to apply the mixture to the surface of a single 6-foot section. Failure to empty all of the Activator into the Resin will prevent the finished application from completely curing. The surface of your countertop will remain tacky and need to be stripped.



With your safety glasses and gloves on, open the contents of the first set of Epoxy Resin Topcoat. Keep in mind that a set is 1 can of Resin and 1 can of Activator.

Pour the **ENTIRE** can of the Epoxy Activator into the Epoxy Resin can, using a stir stick to make sure all of the contents are removed.

TIP: Discard the empty Epoxy Activator can so that you only have the necessary containers in your work area, and so that you are not tempted to use it as a holder for your roller between Epoxy sets.



Then, using a stir stick, stir the epoxy mixture vigorously for **3 minutes and 30 seconds**. You **MUST** scrape the sides and bottom to mix thoroughly. Failure to do so will result in improperly mixed epoxy that will not cure correctly.

IMPORTANT: Time the mixing **EXACTLY**. If each material is under-mixed it will prevent the finished application from completely curing.

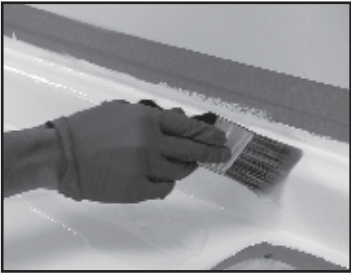
⚠ **Health & Safety:** *Giani Epoxy Activator contains corrosive material: Isophoronediamine.* Wash hands after use. Do not get in eyes, on skin, or on clothing. Do not breathe vapors or mists. Use good personal hygiene. Eating, drinking, and smoking in work areas is prohibited. Remove contaminated clothing and protective equipment before entering eating areas. Eyewash stations and showers should be available in areas where this material is used and stored. Individuals with existing respiratory disease such as chronic bronchitis, emphysema, or asthma should not be exposed. Wear appropriate clothing to avoid skin contact during application.

EPOXY APPLICATION

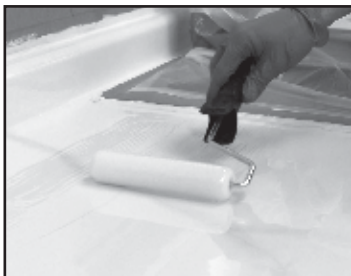


AFTER MIXING THE COMPONENTS, YOU HAVE ABOUT 30 MINUTES TO COMPLETELY COAT THE SECTION before it stops flowing adequately. It takes about 5 to 10 minutes to coat one 6-foot section.

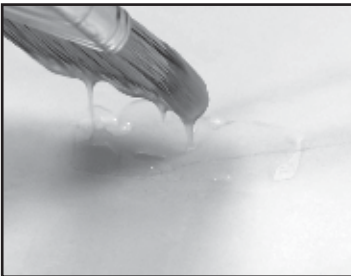
Slowly pour the entire mixture on your first 6-foot section of countertops (**one single set covers up to 12 sq. feet**). It helps to pour the mixture in 3 streams to make sure you'll have even coverage. Start by pouring one stream at the base of your backsplash, one in the center of your countertops, and one close to the edge. You'll want to pour out the contents onto your countertops immediately after mixing because the epoxy's hardening rate will accelerate when left in the can. If you have an object within your 6-foot section such as a sink, simply use the proportionate amount for one side of the sink and continue on the opposite side of the sink until the entire mixture has been used. Within the same section, use an included 2" Angle Brush and transfer some of the Epoxy mixture to your attached backsplash, gently coating it as you brush along the 6-foot section. Do not use epoxy on a backsplash over 4" tall. Lightly brush back across the length of the backsplash once or twice to minimize the possibility of runs and bare spots. Then, use the brush to coat the epoxy around the perimeter of the section as well as along the bottom of the backsplash. This will make filling in the center of the section easier. Brush out the epoxy a little from the backsplash crease because the epoxy can pool there.



Next, use one of your kit's Foam Rollers to slowly and to evenly distribute the epoxy over the surface of your section. Since the epoxy is self-leveling, **try not to overwork your application**. It helps to hold the roller handle gently between your fingers and thumb, and lightly guide the epoxy over your countertops rather than rolling it on. This will keep you from gripping the handle too tightly, and applying too much pressure to the roller. Too much pressure can spread the mixture too thin and cause defects in the cured finish. To make sure they're fully coated, lightly roll the edge of your counters. It's okay if the epoxy runs onto the tarps - you want a good layer of epoxy on your edges since they tend to experience the most amount of wear and friction, especially around the sink area. **NOTE:** A small amount of epoxy may continue to drip off the front edge of your countertop for a short while as it self-levels; typically about 30 to 60 minutes.

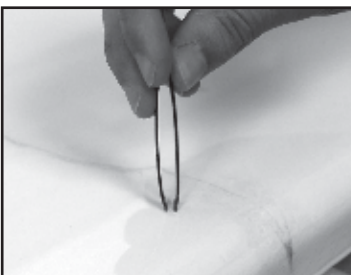


After you've covered your first section, mix a second set of Epoxy Resin and continue on to the next section, blending the 2 sections together to avoid creating a seam. Continue the same process until your entire countertop is coated. **IMPORTANT: Once you've rolled on your topcoat, do NOT add more epoxy unless you have bare spots. Doing so will result in adding an unbalanced proportion of the mix onto the new epoxy which creates a blemish.** If your remaining section of countertop is less than 6 feet, use the appropriate amount of Epoxy Resin to cover the area. For instance, if your final section is 3 feet, mix up the last full set of epoxy and only use half.



If you have a section longer than 6 feet, mix and apply the next set of epoxy right after completing the first so that the 2 batches flow together seamlessly. Be sure to use a new stir stick with each new epoxy set to prevent contamination. Also, be sure to set your foam roller on a protected surface while mixing the next set. **Do NOT set your foam roller in an Activator can.**

Once you're finished applying the Epoxy Resin, grab a bright light and closely inspect your countertops for bare spots, bubbles, or lint. You'll have about 40 minutes after applying the epoxy to correct any flaws. To fix a small bare spot, use the 2" Brush to drizzle a little epoxy onto the spot and dab lightly.



Most of the trapped air will release on its own within a few minutes of rolling. However, for the occasional bubble, lint, or dust, use tweezers to gently pop the bubbles, or pull out the debris. Just make sure not to use the tweezers after an hour. At this point the epoxy is starting to cure, and doing so may leave a divot. **NOTE:** The Epoxy Resin Topcoat does not require a blow torch or heat gun to release any excess air because it has been formulated with air release agents.

IMPORTANT: Remove the tape precisely between 1 to 2 hours after you've finished applying the epoxy. If you remove the tape earlier, then the epoxy may continue to self-level onto an appliance, and if you remove the tape later, then it may create jagged edges and become cemented into the epoxy.

Slowly remove the tape in order to prevent any debris from falling into the still tacky epoxy. You may need a step stool to reach the tape above the backsplash so that you don't touch the countertop edge. Be sure to leave any ceiling fans turned off and windows closed to prevent any dust or lint from blowing onto the epoxy as it settles. Do NOT attempt to remove any debris from the epoxy after one hour, it will create a divot in the final finish and the epoxy will not fill it back in. If this occurs, the debris can be buffed out once the epoxy has fully cured.

Wipe up any kit materials which may have fallen onto your floor or cabinets with a rag and acetone, and take off your shoes in order to prevent tracking the kit materials into other areas of your home. If you get the epoxy mixture on your skin, safely remove it with vinegar, followed by soap and water.

Wait 48 hours before applying acrylic caulk or silicone caulk infused with latex or acrylic around your backsplash and sink.



IMPORTANT INFORMATION



KEEP FROM FREEZING. IF FROZEN, LET THAW.

During the winter months, the contents of Giani Marble are at risk for freezing due to exposure to possible cold temperatures during storage and delivery. It can be tricky to determine if the components are frozen because your cans won't feel cold to the touch - however, the polymers in the kit materials will exhibit a grainy/slushy texture. Not to worry, the components are not permanently damaged and they will completely recover! We recommend allowing the contents of your kit to thaw at room temperature for 2-3 full days before applying. **DO NOT apply your Marble Kit if any of the materials appear clumpy or frozen. Apply at 72° - 75°F.**



FIRST AID INSTRUCTIONS

Inhalation: Remove source of exposure or move person to fresh air and keep comfortable for breathing. If exposed/feel unwell/concerned: Call a POISON CENTER/doctor.

Skin Contact: Rinse/wash with lukewarm, gently flowing water and mild soap for 15-20 minutes or until product is removed. If skin irritation occurs or you feel unwell: Get medical advice/attention. IF exposed or concerned: Get medical advice/attention.

Eye Contact: Remove source of exposure or move person to fresh air. Rinse eyes cautiously with lukewarm, gently flowing water for several minutes, while holding the eyelids open. Remove contact lenses, if present and easy to do. Continue rinsing for a duration of 15-20 minutes. Take care not to rinse contaminated water into the unaffected eye or onto the face. If eye irritation persists: Get medical advice/attention.

Ingestion: Rinse mouth. Do NOT induce vomiting. Immediately call a POISON CENTER/doctor. If vomiting occurs naturally, lie on your side, in the recovery position. Give 3 or 4 glasses of water to drink. Never give anything by mouth to an unconscious person.



EXPOSURE CONTROLS/ PERSONAL PROTECTION INSTRUCTIONS

Eye Protection: Wear eye protection with side shields or goggles. Wear indirect-vent, impact and splash resistant goggles when working with liquids. If additional protection is needed for entire face, use in combination with a face shield.

Skin Protection: Use of gloves approved to relevant standards made from the following materials may provide suitable chemical protection: PVC, neoprene or nitrile rubber gloves. Suitability and durability of a glove is dependent on usage, e.g. frequency and duration of contact, chemical resistance of glove material, glove thickness, dexterity. Always seek advice from glove suppliers. Contaminated gloves should be replaced. Use of an apron and over-boots of chemically impervious materials such as neoprene or nitrile rubber is recommended to avoid skin sensitization. The type of protective equipment must be selected according to the concentration and amount of the dangerous substance at the specific workplace. Launder soiled clothes or properly dispose of contaminated material, which cannot be decontaminated.

Respiratory Protection: If engineering controls do not maintain airborne concentrations to a level which is adequate to protect worker, a respiratory protection program that meets or is equivalent to OSHA 29 CFR 1910.134 and ANSI Z88.2 should be followed. Check with respiratory protective equipment suppliers. In poorly ventilated areas, a cartridge mask NIOSH approved for organic vapors is recommended under the following conditions: emergency situations, when product vapor concentration is greater than 20 ppm for a period longer than 15 min., during repair and cleaning of equipment, during transfer or discharge of the product.

Appropriate Engineering Controls: Provide exhaust ventilation or other engineering controls to keep the airborne concentrations of vapors below their respective threshold limit value.

LIMITED MATERIAL WARRANTY:

Giani, Inc. warrants, for a period of 12 months from the date of application, if applied during the proper shelf life (Giani Marble has a shelf life of 1.5 years), that its products are free of defects in material and workmanship, when applied and maintained in accordance with surface preparation and application recommended by Giani. This limited warranty covers a one-time fulfillment of replacement material(s) or a product refund excluding shipping costs. After 12 months, customers are expected to maintain their countertops, garages, cabinets, appliances, and furniture/projects, and take the proper care as listed under the FAQ/Instructions and cover any damages that ensue if care is not maintained.

This Warranty Does Not Cover:

- Dissatisfaction with the color, finish/shine, or application process. Problems or damage due to application or maintenance other than as recommended by Giani in its printed labels and instructions.
- Labor costs (as these are DIY kits and designed for use by anyone and does not require the use of a contractor).
- Damage due to accidents or damage caused by chemicals not approved for exposure by Giani, Inc.
- Usage of third-party products over any Giani product, such as other topcoats, other than as recommend by Giani in its printed labels and instructions.
- Minor chips or wear from excessive impact or friction.
- Returns, exchanges, or refunds from a retail store or an online marketplace other than gianigranite.com.

This warranty requires that the customer provide pictures and answer a series of questions to determine if there are defects with any Giani product and lets us assess how to provide a positive solution on how to fix any issues so that it does not keep happening. **Please contact us at info@gianigranite.com if you are concerned about your Giani product.**

WHEN CAN I USE MY COUNTERTOPS AGAIN?



Once applied, your countertops will be tack free in 6 to 8 hours. You can use your dishwasher after 24 hours. After 48 hours, you may lightly use your counters, but it is recommended to wait the full cure time of 7 days (time it takes for your finish to reach its maximum hardness) before cleaning your counters with anything but mild soap and water or placing heavy objects on them. **Food Safety:** Once the Epoxy Resin Topcoat fully cures, it's completely inert.

MATERIALS DISPOSAL

Dispose of empty product containers properly. Do not use sawdust or other fine cellulose materials to absorb any waste Epoxy Activator. Do not dispose of the Epoxy Activator in the trash containing sawdust or other fine cellulose materials as spontaneous combustion may occur. Do not dispose in a liquid state - the two cans can be mixed and cured in small quantities to create a non-hazardous inert solid. Unused, unmixed Giani Epoxy Resin and Epoxy Activator have shelf-lives of 1.5 years when stored in the sealed containers.

CAUTION! Large containers of curing Epoxy Resin Topcoat can get hot enough to ignite surrounding combustible materials and give off hazardous fumes. Consequently, place any cans of unused, mixed epoxy in a safe and ventilated area, uncovered, and away from people and combustible materials. The excess mixture will cure and harden into a solid mass. Dispose of the mass only if the cure is complete and has cooled, which typically takes about 8 hours. Follow federal, state, or local disposal regulations. The disposal guidelines above may not comply with the laws and regulations in your area. If you are uncertain, refer to local and national regulations.

CARE & MAINTENANCE



To clean your Giani Countertops you can use mild dish soap and water, Giani Countertop Cleaner, Lysol wipes, Windex®, Purell Multi Surface and Mrs. Meyers. Never use harsh chemicals such as bleach, or any abrasives such as Comet® or Soft Scrub®. Do not use polishes or granite cleaners. Even diluted solutions of a cleaner and water will wear down the durability of the finish over time. Never use harsh, natural cleaners such as vinegar, rubbing alcohol, hand sanitizer, air freshener oils, or essential oils. Never use scratch pads or microfiber cloths.

Cutting Boards & Hot Surfaces: Just like with natural marble, it is not recommended to cut directly on your new Giani Countertops. You need to use a cutting board for any food prep to avoid scratches. Although Giani Epoxy is heat resistant up to 250°F, always use a hot pad or trivet for items directly from the stove or oven.

Stains: You can remove stains with acetone and a paper towel. You can also very lightly use a Magic Eraser for stubborn stains. **NOTE:** extended use of a Magic Eraser can dull your epoxy overtime. Therefore it is only recommended to use one if it is absolutely necessary.

UV Rays: If possible, minimize direct, all-day UV contact. All surfaces will exhibit some UV effect over time; Giani Marble's UV effect will be minimal, however, we recommend minimizing direct UV contact if possible.

Please note: Even if you follow the application instructions perfectly, your countertops may show signs of wear if you don't follow these proper care instructions. With the proper care, Giani Marble will last as long as any conventional countertop.



When your project is finished, send us your Before & After pictures or tag us on social media. Your photos will inspire others. Let us know if you have any questions, and enjoy your countertop makeover!



GIANI, Inc. 1 Lincoln Way, St. Louis, MO 63120
www.gianigranite.com // info@gianigranite.com
 800-650-5699 // +1 314-241-3500
International Emergency: +49 69-2222-5285

LET'S BE FRIENDS!

Follow us on Social Media for inspiration.

