



INSTRUCTIONS

Giani Granite 2.0 Kit: Epoxy Resin Topcoat - Covers 35 Sq. Feet

BEFORE USING GIANI:



WATCH OUR HOW-TO VIDEOS!

Visit gianigranite.com and select the "Videos" link on the top menu. Watch our videos and read through all of the instructions prior to starting your project, as they are meant to make your transformation quicker and easier!



LIVE CHAT WITH US!

Have a question? We're here to help! Chat with us Monday- Friday, 7 AM to 3:30 PM CST on gianigranite.com. Just look for the chat bubble at the bottom right-hand corner. You can also reach us at info@gianigranite.com.

CAN BE USED ON:

- Formica
- Corian*
- Laminate
- Backsplashes
- Primed Plastic
- Fireplace Mantels
- Wood*
- Metal*
- Cultured Marble*
- Real Concrete**
- Real Granite**

Additional household items you will need:

- SOS® or Brillo® pad to prep countertops
- One roll of Painter's Tape
- Paint tray for primer
- Pencil as a tool for backsplash
- Artist brush for blending mineral colors in creases
- #300 grit sand paper and sanding block
- Acrylic or Silicone caulk infused with Latex or Acrylic
- Safety glasses to avoid accidental eye contact
- Step stool for hard to reach places
- Tweezers to remove debris from epoxy
- Paper towels for cleanup
- Nail polish remover for cleanup

* De-gloss with a very fine #300 grit sandpaper, then wipe clean with a damp cloth. For unsealed wood, apply a good, water-based wood primer before applying the Primer. Apply the wood primer with a foam roller for smooth finishes because thicker nap rollers will leave a textured finish. Continue with standard prep instructions.

** For granite and concrete that are fully cured, clean the surface with xylene or lacquer thinner, and then wipe-up with rubbing alcohol before applying the Primer. Follow with standard prep instructions. Please note, xylene and lacquer thinner are very flammable!

DO NOT use Giani Marble on tubs, flooring, or shower doors/floors. **DO NOT** use Giani Marble if any paint or epoxy appears frozen or damaged. You **MUST** measure your counters before applying Giani. **DO NOT** use a single kit on a surface larger than 35 sq. feet.

SURFACE PREP WORK:



Remove any silicone or acrylic caulk from your countertop or attached backsplash. Carefully trim the adhesive away with a box cutter or knife, and peel the remainder from the seam.

Note: Clean up caulk residue with rubbing alcohol.



Use a scouring pad, such as an SOS® or Brillo® pad, to remove grease and dirt. **DO NOT** use any other cleaners. Rinse with water, at least twice, to remove all cleaner residue.

Note: It is **NOT** necessary to sand as the scouring pad will rough up the surface.



Patch deep nicks and seams with wood filler. Giani will cover up thin, shallow scratches. Once dry, sand the wood patch smooth with a #300 fine grit sandpaper. Wipe up the dust with a damp cloth.

Giani will level shallow textured surfaces due to its thickness and self-leveling properties.



Use a high quality painter's tape, such as Frog® Tape, to protect the following areas of your project work space:

- Above backsplash or exposed walls (**see Note 1**)
- Around the sink, cooktop, and oven (**see Note 2**)
- Under the edge of your countertops (**see Note 3**)

Note 1: Apply at least 2 layers of tape directly to your backsplash or walls. If you have an attached backsplash, use the painter's tape to protect the walls above them from contact with the kit materials. You will be able to remove any accidental exposure to them when they are wet, but it is much more difficult to clean up when fully cured.

Note 2: Apply painter's tape around the edges of the sink to protect it from accidental contact with the kit materials. Also tape around the base of your faucet and water supply handles with painter's tape. Thoroughly taping these surfaces will prevent the primer and Mineral Colors from adhering to the fixtures.



Note 3: Apply painter's tape under the front edge of your countertops, over the top of your drawers and cabinets. This will protect your cabinets from accidental contact with the kit materials. Both the primer and minerals will wash off with mild soap and water in the event of drips or spills, just make sure to clean them before they dry onto the surface.

STEP 1: ROLL ON PRIMER



After shaking the Iron Core Primer can well, pour about half of the contents into your painter's tray. Use the Foam Brush to paint a narrow strip of primer at the bottom and top of your backsplash.

Continue using the Foam Brush to cut in around the corners and edges, and use the fabric roller to fill in the rest. Edge in 2-foot sections at a time and then immediately roll that section so your brush strokes blend in with the rolled areas.

Move onto the next 2-foot section, blending it with the previous section while both are still wet. Repeat until the entire countertop is covered. Make sure to work quickly so as not to create lap lines.



Wait 8 hours for the primer to dry before moving on to Step 2. Clean your foam brush to reuse and dispose of the roller cover. If you noticed that you missed a large spot after finishing the primer, first allow the countertops and sink to dry before attempting touch-ups with your foam brush. Allow another two hours of dry time before applying the mineral colors. **Note:** If, after drying, the primer is thin or spotty, don't worry, sponging on the mineral colors will cover a significant portion of the surface of your countertops, creating depth and texture. Very small missed spots in the primer will not be visible once your application is complete.

STEP 2: SPONGE ON MINERALS



Practice the Mineral Colors application on your kit's Black Practice Sheet before painting on your countertops.

Cut the Sponge in half, then cut each half piece in half, giving you 4 pieces. Stir well, and pour small amounts of each Mineral Color onto separate paper plates. Pick off any loose bits of sponge, before dipping it in the Minerals, to prevent debris in your application. Dip the textured side of the Sponge into Mineral No. 2a and dab off the excess on a clean paper plate. Working in small, 2-foot sections once again, dab Mineral No. 2a lightly onto your counter creating a nice imprint of the sponge. If you get a "paint blob," you are pushing down too hard. Let some of the black primer show through underneath, but be sure to have each imprint overlap one another. While Mineral No. 2a is still wet, use another piece of sponge to apply No. 2b over the top of No. 2a, following the same overlapping application. Repeat again with No. 2c. Move onto the 2-foot section right next to the section you just completed, following the same application technique as above, overlapping and blending as you sponge. **IMPORTANT: For the White Diamond and Sicilian Sand Kits, allow each Mineral Color to dry before applying the next. The Minerals in these kits tend to mix together and muddy when layered wet.** In order to better coat the top and bottom of your attached backsplash, cut a small piece of sponge and attach it to the end of a pencil. **TIP: Use a small, stiff artist brush to get into the crease of the backsplash, and fine-tune the blending of your sponged areas.**



Once you've completed Step 2 on all of your countertops, take a step back and see if any adjustments need to be made. You may go back in and add more colors even after it has dried! Allow 4 hours of dry time after applying the mineral colors before applying the Epoxy Resin Topcoat.



CHOCOLATE BROWN & SLATE TIPS: While working in 2-foot sections, and immediately after No. 2c has been applied, use the 4th piece of sponge to dry sponge and blend the colors. *For Chocolate Brown*, tap very lightly over the section to knock down and blend some of the red showing through in the brown. *For Slate*, push down with more pressure to blend all three colors together. This is a personal preference, as some may like it more blended than others.



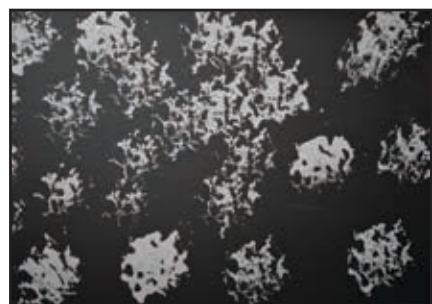
BOMBAY BLACK TIP: Be sure to stir both the Pearl Mica and Bronze Minerals well. Each color has metallic flakes that may settle in the bottom of the can. Apply the Bronze sparingly, as a little goes a long way.

WHITE DIAMOND TIP: For a brighter look, repeat an additional one to two layers of No. 2c. We recommend waiting until your countertops are dry to the touch before adding layers.

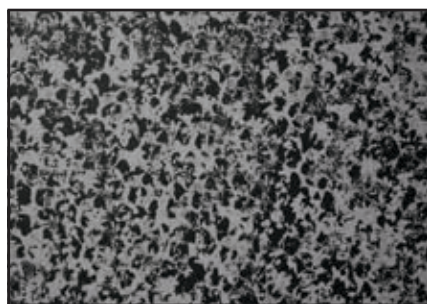
A GUIDE TO LAYERED SPONGING:

For best results, follow this guide for each Mineral Color application.

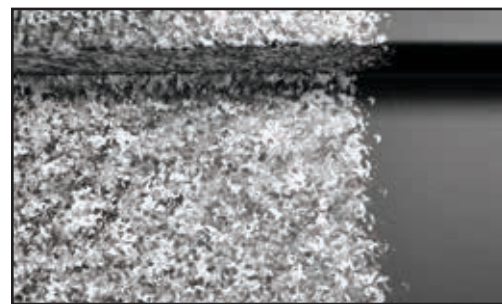
Should NOT Look like This:



Should Look like This:



Final Look of Each 2-Foot Section:



STEP 2: POUR & ROLL EPOXY TOPCOAT

STOP! Did you measure your counters? Extending the epoxy beyond 35 sq. feet will result in imperfections and void the warranty.

APPLYING GIANI EPOXY RESIN TOPCOAT IS TIME SENSITIVE. Read all instructions carefully and watch the application videos on our website before beginning this step. **Also, please review the included Safety Data Sheet (SDS) prior to use.**

If you're applying the Epoxy Resin Topcoat over an existing Giani High-Gloss or Glitter Topcoat finish, then it must be fully cured for 14 days prior to using the epoxy. If you have any blemishes in your current finish, repair them before applying the epoxy.

PREP WORK:



1 MINIMIZE

Minimize the movement of air within your workspace to keep dust, lint, and other contaminants from falling into the epoxy.

- Close windows and exterior doors
- Turn off all fans
- Close floor and ceiling HVAC vents



2 RESTRICT

Restrict access to your workspace. Make sure to keep the area free of pets and children to minimize accidental contact with the epoxy. **TIP:** Post signs around your workspace announcing that your countertops are wet and should not be used until the surface has cured for at least 48 hours.



3 TAPE

Using painter's tape, create "dams" on the edge of your countertops that are next to appliances. Firmly press the sticky side of the tape against the edge of the countertop with about a half-inch of the adhesive side sticking up. This will protect appliances and prevent the epoxy mixture from falling off the edge of your countertops, allowing it to properly self-level.



4 TARP

Use the included plastic tarps to cover your lower cabinets, floors, appliances, sink, faucets, and fixtures. Use small pieces of tape to hold the tarps in place, and run long strips of tape along the underside of your countertop. This will protect against kit materials that, when hardened, could leave a rough edge.

MIXING THE COMPONENTS:

IMPORTANT NOTE ABOUT CURING: Once the Epoxy Resin Topcoat components have been mixed, the reaction cannot be stopped. The topcoat comes in 3 sets. Each set contains 2 cans: one can of Activator and one can of Resin. The amounts are designed so that the contents of the Epoxy Activator will fit perfectly into the Epoxy Resin can. The set is provided to give plenty of time to apply the mixture to the surface of a single 6-foot section. Failure to empty all of the Activator into the Resin will prevent the finished application from completely curing. The surface of your countertop will remain tacky and need to be stripped.



With your safety glasses and gloves on, open the contents of the first set of Epoxy Resin Topcoat. Keep in mind that a set is 1 can of Resin and 1 can of Activator.

Pour the **ENTIRE** can of the Epoxy Activator into the can of Epoxy Resin. Check to make sure you empty all of the contents of the Activator. If the mixture is incorrect, it can prevent the topcoat from curing properly.

TIP: Discard the empty Epoxy Activator can so that you only have the necessary containers in your work area, and so that you are not tempted to use it as a holder for your roller between applying each Epoxy set.



Wipe a stir stick with a bare hand to remove any wood dust before mixing the components. Tiny dust particles can cause small imperfections in the cured finish. Then, using the same stick, stir the epoxy mixture for **3 minutes and 30 seconds**. Stir vigorously, scraping the sides and bottom to mix thoroughly.

IMPORTANT: Time the mixing EXACTLY. If the combined Activator and Resin are under-mixed it will prevent the finished application from completely curing, or take longer than normal to fully cure.

⚠ **Health & Safety:** *Giani Epoxy Activator contains corrosive material: Isophoronediamine.* Wash hands after use. Do not get in eyes, on skin, or on clothing. Do not breathe vapors or mists. Use good personal hygiene. Eating, drinking, and smoking in work areas is prohibited. Remove contaminated clothing and protective equipment before entering eating areas. Eyewash stations and showers should be available in areas where this material is used and stored. Individuals with existing respiratory disease such as chronic bronchitis, emphysema, or asthma should not be exposed. Wear appropriate clothing to avoid skin contact during application.

EPOXY APPLICATION:



AFTER MIXING THE COMPONENTS, YOU HAVE ABOUT 30 MINUTES TO COMPLETELY COAT THE SECTION before it stops flowing adequately. It takes about 5 to 10 minutes to coat one 6-foot section.

Slowly pour the entire mixture on your first 6-foot section of countertops. It helps to pour the mixture in 3 streams to make sure you'll have even coverage. Start by pouring one stream at the base of your backsplash, one in the center of your countertops, and one close to the edge. You'll want to pour out the contents onto your countertops immediately after mixing because the epoxy's hardening rate will accelerate when left in the can. If you have an object within your 6-foot section such as a sink, simply use the proportionate amount for one side of the sink and continue on the opposite side of the sink until the entire mixture has been used. Within the same section, use an included 2" Angle Brush and transfer some of the Epoxy mixture to your attached backsplash, gently coating it as you brush along the 6-foot section. Lightly brush back across the length of the backsplash once or twice to minimize the possibility of runs and bare spots. Then, use the brush to coat the epoxy around the perimeter of the section as well as along the bottom of the backsplash. This will make filling in the center of the section easier. Brush out the epoxy a little from the backsplash crease because the epoxy can pool there.



Next, use one of your kit's Foam Rollers to slowly and evenly distribute the epoxy over the surface of your section. Since the epoxy is self-leveling, try not to overwork your application. It helps to hold the roller handle gently between your fingers and thumb, and lightly roll the epoxy over your countertops. This will keep you from gripping the handle too tightly, and applying too much pressure to the roller. Too much pressure can spread the mixture too thin and cause defects in the cured finish. To make sure they're fully coated, lightly roll the edge of your counters. It's okay if the epoxy runs onto the tarps - you want a good layer of epoxy on your edges since they tend to experience the most amount of wear and friction, especially around the sink area. **NOTE:** A small amount of epoxy may continue to drip off the front edge of your countertop for a short while as it self-levels; typically about 30 to 60 minutes.



After you've covered your first section, mix a second set of Epoxy Resin and continue on to the next section, blending the 2 sections together to avoid creating a seam. Continue the same process until your entire countertop is coated. **IMPORTANT: Once you've rolled on your topcoat, do NOT add more epoxy unless you have bare spots. Doing so will result in adding an unbalanced proportion of the mix onto the new epoxy which creates a blemish.** If your remaining section of countertop is less than 6 feet, use the appropriate amount of Epoxy to cover the area. For instance, if your final section is 3 feet, mix up the last full set of epoxy and only use half.



If you have a section longer than 6 feet, mix and apply the next set of epoxy right after completing the first so that the 2 batches flow together seamlessly. Be sure to use a new stir stick with each new epoxy set to prevent contamination. Also, be sure to set your foam roller on a protected surface while mixing the next set. **Do NOT set your foam roller in an Activator can.**

Once you're finished applying the Epoxy, grab a bright light and closely inspect your countertops for bare spots, bubbles, or lint. You'll have about 40 minutes after applying the epoxy to correct any flaws. To fix a small bare spot, use the 2" Brush to drizzle a little epoxy onto the spot and dab lightly.



Most of the trapped air will release on its own within a few minutes of rolling. However, for the occasional bubble, lint, or dust, use tweezers to gently pop the bubbles, or pull out the debris. Just make sure not to use the tweezers after an hour. At this point the epoxy is starting to cure, and doing so may leave a divot. **NOTE:** The Epoxy Topcoat does not require a blow torch or heat gun to release any excess air because it has been formulated with air release agents.

IMPORTANT: Remove the tape precisely between 1 to 2 hours after you've finished applying the epoxy. If you remove the tape earlier, then the epoxy may continue to self-level onto an appliance, and if you remove the tape later, then it may create jagged edges and become cemented into the epoxy.

Remove the tape very slowly in order to prevent any debris from falling into the still-tacky epoxy. You may need a step stool to reach the tape above the backsplash so that you don't touch the countertop edge. Be sure to leave any ceiling fans turned off and windows closed to prevent any dust or lint from blowing onto the epoxy as it settles. Do NOT attempt to remove any debris from the epoxy after one hour because removal will create a divot in the final finish and the epoxy will not fill it back in. If this occurs, the debris can be buffed out in the future once the epoxy has fully cured.

Wipe up any kit materials which may have fallen onto your floor or cabinets with a rag and nail polish remover (acetone), and take off your shoes in order to prevent tracking the kit materials into other areas of your home. If you get the epoxy mixture on your skin, safely remove it with vinegar, followed by soap and water.

Wait 48 hours before applying acrylic caulk or silicone caulk infused with latex or acrylic around your backsplash and sink.



WHEN CAN I USE MY COUNTERTOPS AGAIN?



Once applied, the epoxy will be tack free in 6 to 8 hours. You can use your dishwasher after 24 hours. After 48 hours, you may lightly use your counters, but it is recommended to wait the full cure time of 7 days (time it takes for your finish to reach its maximum hardness) before cleaning your counters with anything but mild soap and water or placing heavy objects on them. **Food Safety:** Once Giani Epoxy fully cures, it's completely inert.

EPOXY DISPOSAL:

Dispose of empty product containers properly. Do not use sawdust or other fine cellulose materials to absorb any waste Epoxy Activator. Do not dispose of the Epoxy Activator in the trash containing sawdust or other fine cellulose materials as spontaneous combustion may occur. Do not dispose in a liquid state - the two cans can be mixed and cured in small quantities to create a non-hazardous inert solid. Unused, unmixed Giani Epoxy Resin and Epoxy Activator have a shelf-life of 1.5 years when stored in the sealed containers.

CAUTION! Large containers of curing Epoxy Topcoat can get hot enough to ignite surrounding combustible materials and give off hazardous fumes. Consequently, place any cans of unused, mixed epoxy in a safe and ventilated area, uncovered, and away from people and combustible materials. The excess mixture will cure and harden into a solid mass. Dispose of the mass only if the cure is complete and has cooled, which typically takes about 8 hours. Follow federal, state, or local disposal regulations. The disposal guidelines above may not comply with the laws and regulations in your area. If you are uncertain, refer to local and national regulations.

CARE & MAINTENANCE:



To clean your Giani Countertops you can use mild dish soap and water, Giani Countertop Cleaner, Lysol wipes, Windex®, Purell Multi Surface and Mrs. Meyers. Never use harsh chemicals such as bleach, or any abrasives such as Comet® or Soft Scrub®. Do not use polishes or granite cleaners. Even diluted solutions of a cleaner and water will wear down the durability of the finish over time. Never use harsh, natural cleaners such as vinegar, rubbing alcohol, hand sanitizer, air freshener oils, or essential oils. Never use scratch pads or microfiber cloths.

Cutting Boards & Hot Surfaces: Just like with natural marble, it is not recommended to cut directly on your new Giani Countertops. You need to use a cutting board for any food prep to avoid scratches. Although Giani Epoxy is heat resistant up to 250°F, always use a hot pad or trivet for items directly from the stove or oven.



Stains: You can remove stains with acetone and a paper towel. You can also very lightly use a Magic Eraser for stubborn stains. **NOTE:** extended use of a Magic Eraser can dull your epoxy overtime. Therefore it is only recommended to use one if it is absolutely necessary.

UV Rays: If possible, minimize direct, all-day UV contact. All surfaces will exhibit some UV effect over time; Giani Marble's UV effect will be minimal, however, we recommend minimizing direct UV contact if possible.

Please note: Even if you follow the application instructions perfectly, your countertops may show signs of wear if you don't follow these proper care instructions. With the proper care, Giani Marble will last as long as any conventional countertop.



When your project is finished, send us your Before & After pictures or tag us on social media. Your photos will inspire others. Let us know if you have any questions and enjoy your countertop makeover!

GIANI, Inc. 1 Lincoln Way, St. Louis, MO 63120
www.gianigranite.com // info@gianigranite.com
 800-650-5699 // +1 314-241-3500
 International Emergency: +49 69-2222-5285

LET'S BE FRIENDS!

Follow us on Social Media for inspiration.



IMPORTANT INFORMATION:



KEEP FROM FREEZING. IF FROZEN, LET THAW.

In the winter, both paint and epoxy are at risk for freezing due to the cold temperatures they may be exposed to during warehouse storage and delivery. Frozen paint and epoxy can sometimes be tricky to determine initially because your cans won't feel cold to the touch - however, the contents will exhibit a grainy/slushy texture. But not to worry, the paint and epoxy will completely recover! We recommend allowing all materials to recover at room temperature for one week before applying. **DO NOT apply kit materials if they appears clumpy or frozen. Apply at 72°F - 75°F.**



FIRST AID INSTRUCTIONS

Inhalation: Remove source of exposure or move person to fresh air and keep comfortable for breathing. If exposed/feel unwell/concerned: Call a POISON CENTER/doctor.

Skin Contact: Rinse/wash with lukewarm, gently flowing water and mild soap for 15-20 minutes or until product is removed. If skin irritation occurs or you feel unwell: Get medical advice/attention. IF exposed or concerned: Get medical advice/attention.

Eye Contact: Remove source of exposure or move person to fresh air. Rinse eyes cautiously with lukewarm, gently flowing water for several minutes, while holding the eyelids open. Remove contact lenses, if present and easy to do. Continue rinsing for a duration of 15-20 minutes. Take care not to rinse contaminated water into the unaffected eye or onto the face. If eye irritation persists: Get medical advice/attention.

Ingestion: Rinse mouth. Do NOT induce vomiting. Immediately call a POISON CENTER/doctor. If vomiting occurs naturally, lie on your side, in the recovery position. Give 3 or 4 glasses of water to drink. Never give anything by mouth to an unconscious person.



EXPOSURE CONTROLS/ PERSONAL PROTECTION INSTRUCTIONS

Eye Protection: Wear eye protection with side shields or goggles. Wear indirect-vent, impact and splash resistant goggles when working with liquids. If additional protection is needed for entire face, use in combination with a face shield.

Skin Protection: Use of gloves approved to relevant standards made from the following materials may provide suitable chemical protection: PVC, neoprene or nitrile rubber gloves. Suitability and durability of a glove is dependent on usage, e.g. frequency and duration of contact, chemical resistance of glove material, glove thickness, dexterity. Always seek advice from glove suppliers. Contaminated gloves should be replaced. Use of an apron and over-boots of chemically impervious materials such as neoprene or nitrile rubber is recommended to avoid skin sensitization. The type of protective equipment must be selected according to the concentration and amount of the dangerous substance at the specific workplace. Launder soiled clothes or properly disposed of contaminated material, which cannot be decontaminated.

Respiratory Protection: If engineering controls do not maintain airborne concentrations to a level which is adequate to protect worker, a respiratory protection program that meets or is equivalent to OSHA 29 CFR 1910.134 and ANSI Z88.2 should be followed. Check with respiratory protective equipment suppliers. In poorly ventilated areas, a cartridge mask NIOSH approved for organic vapors is recommended under the following conditions: emergency situations, when product vapor concentration is greater than 20 ppm for a period longer than 15 min., during repair and cleaning of equipment, during transfer or discharge of the product.

Appropriate Engineering Controls: Provide exhaust ventilation or other engineering controls to keep the airborne concentrations of vapors below their respective threshold limit value.

LIMITED MATERIAL WARRANTY:

Giani, Inc. warrants, for a period of 12 months from the date of application, if applied during the materials' proper shelf life (paint has a shelf life of 2 years, and epoxy has a shelf life of 1.5 years), that its products are free of defects in material and workmanship, when applied and maintained in accordance with surface preparation and application recommended by Giani. This limited warranty covers a one-time fulfillment of replacement material(s) or a product refund excluding shipping costs. After 12 months, customers are expected to maintain their countertops, garages, cabinets, appliances, and furniture/projects, and take the proper care as listed under the FAQ/Instructions and cover any damages that ensue if care is not maintained.

This Warranty Does Not Cover:

- Dissatisfaction with the color, finish/shine, or application process. Problems or damage due to application or maintenance other than as recommended by Giani in its printed labels and instructions.
- Labor costs (as these are DIY kits and designed for use by anyone and does not require the use of a contractor or professional painter).
- Damage due to accidents or damage caused by chemicals not approved for exposure by Giani, Inc.
- Usage of third-party paints over any Giani product, such as other topcoats/epoxies, other than as recommend by Giani in its printed labels and instructions.
- Minor chips or wear from excessive impact or friction.
- Returns, exchanges, or refunds from a retail store or an online marketplace other than gianigranite.com.

This warranty requires that the customer provide pictures and answer a series of questions to determine if there are defects with any Giani products. It also allows customer support to assess, and provide a positive solution on how to fix any issues so that they do not persist. **Please contact us at info@gianigranite.com if you are concerned about your Giani product.**