



INSTRUCTIONS

Giani Granite 2.0 Kit: 100% Acrylic Formula - Covers 35 Sq. Feet

BEFORE USING GIANI:



WATCH OUR HOW-TO VIDEOS!

Visit gianigranite.com and select the "Videos" link on the top menu. Watch our videos and read through all of the instructions prior to starting your project, as they are meant to make your transformation quicker and easier!



LIVE CHAT WITH US!

Have a question? We're here to help! Chat with us Monday- Friday, 7 AM to 4 PM CST on gianigranite.com. Just look for the chat bubble at the bottom right-hand corner. You can also reach us at info@gianigranite.com.

CAN BE USED ON:

- Formica
- Laminate
- Primed Plastic
- Wood*
- Cultured Marble*
- Real Granite**
- Corian*
- Backsplashes
- Fireplace Mantels
- Metal*
- Real Concrete**

Additional household items you will need:

- SOS® or Brillo® pad to prep countertops
- One roll of Painter's Tape
- Paint tray for primer and topcoat
- Pencil as a tool for blending minerals on backsplash
- Artist brush for blending mineral colors in creases
- #300 grit sand paper and sanding block
- Sufficient lighting
- Clear acrylic caulk for sealing
- Step stool for hard to reach places
- Paper towels for cleanup

* De-gloss with a very fine #300 grit sandpaper, then wipe clean with a damp cloth. For unsealed wood, apply a good, oil-based wood primer before applying the Giani Iron Core Primer. Apply the wood primer with a foam roller for ultra-smooth finishes because thicker fabric rollers will leave a textured finish.

** For granite and concrete that are fully cured, clean the surface with a xylene or lacquer thinner, and then wipe-up with rubbing alcohol to ensure any residual wax or sealer has been removed before applying the Giani Iron Core Primer. Please note, xylene and lacquer thinner are very flammable!

Please, contact us at 800-650-5699, at info@gianigranite.com, or Live Chat with us for other applications or questions. **DO NOT** use Giani on tubs, flooring, or shower doors/floors.

SURFACE PREP WORK:



Remove any silicone or acrylic caulk from your countertop or attached backsplash. Carefully trim the adhesive away with a box cutter or knife, and peel the remainder from the seam.

Note: Clean up caulk residue with rubbing alcohol.



Use a scouring pad, such as an SOS® or Brillo® pad, to remove grease and dirt. **DO NOT** use any other cleaners. Rinse with water, at least twice, to remove all cleaner residue.

Note: It is NOT necessary to sand as the scouring pad will rough up the surface.



Patch deep nicks and seams with wood filler. Giani will cover up thin, shallow scratches. Once dry, sand the wood patch smooth with a #300 fine grit sandpaper. Wipe up the dust with a damp cloth.

Giani will level shallow textured surfaces due to its thickness and self-leveling properties.

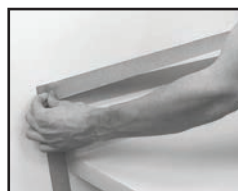


Use a high quality painter's tape, such as Frog® Tape, to protect the following areas of your project work space:

- Above backsplash or exposed walls (**see Note 1**)
- Around the sink, cooktop, and oven (**see Note 2**)
- Under the edge of your countertops (**see Note 3**)

Note 1: Apply at least 2 layers of tape directly to your backsplash or walls. If you have an attached backsplash, use the painter's tape to protect the walls above them from contact with the kit materials. You will be able to remove any accidental exposure to them when they are wet, but it is much more difficult to clean up when fully cured.

Note 2: Apply painter's tape around the edges of the sink to protect it from accidental contact with the kit materials. Also tape around the base of your faucet and water supply handles with painter's tape. Thoroughly taping these surfaces will prevent the primer and Mineral Colors from adhering to the fixtures.



Note 3: Apply painter's tape under the front edge of your countertops, over the top of your drawers and cabinets. This will protect your cabinets from accidental contact with the kit materials. Both the primer and minerals will wash off with mild soap and water in the event of drips or spills, just make sure to clean them before they dry onto the surface.

STEP 1: ROLL ON PRIMER



After shaking the Iron Core Primer can well, pour about half of the contents into your painter's tray. Use the Foam Brush to paint a narrow strip of primer at the bottom and top of your backsplash.

Continue using the Foam Brush to cut in around the corners and edges, and use one of the Fabric Rollers to fill in the rest. Edge in 2-foot sections at a time and then immediately roll that section so your brush strokes blend in with the rolled areas.

Move onto the next 2-foot section, blending it with the previous section while both are still wet. Repeat until the entire countertop is covered. Make sure to work quickly so as not to create lap lines.



Wait 8 hours for the primer to dry before moving on to Step 2. Clean your foam brush to reuse and dispose of the roller cover. If you noticed that you missed a large spot after finishing the primer, first allow the countertops and sink to dry before attempting touch-ups with your foam brush. Allow another two hours of dry time before applying the mineral colors. **Note:** If, after drying, the primer is thin or spotty, don't worry, sponging on the mineral colors will cover a significant portion of the surface of your countertops, creating depth and texture. Very small missed spots in the primer will not be visible once your application is complete.

STEP 2: SPONGE ON MINERALS



Practice the Mineral Colors application on your kit's Black Practice Sheet before painting on your countertops.

Cut the Sponge in half, then cut each half piece in half, giving you 4 pieces. Pour small amounts of each Mineral Color onto separate paper plates. Pick off any loose bits of sponge, before dipping it in the Minerals, to prevent debris in your application. Dip the textured side of the Sponge into Mineral No. 2a and dab off the excess on a clean paper plate. Working in small, 2-foot sections once again, dab Mineral No. 2a lightly onto your counter creating a nice imprint of the sponge. If you get a "paint blob," you are pushing down too hard. Let some of the black primer show through underneath, but be sure to have each imprint overlap one another. While Mineral No. 2a is still wet, use another piece of sponge to apply No. 2b over the top of No. 2a, following the same overlapping application. Repeat again with No. 2c. Move onto the 2-foot section right next to the section you just completed, following the same application technique as above, overlapping and blending as you sponge. **IMPORTANT: For the White Diamond and Sicilian Sand Kits, allow each Mineral Color to dry before applying the next. The Minerals in these kits tend to mix together and muddy when layered wet.** In order to better coat the top and bottom of your attached backsplash, cut a small piece of sponge and attach it to the end of a pencil. **TIP: Use a small, stiff artist brush to get into the crease of the backsplash, and fine-tune the blending of your sponged areas.**



Once you've completed Step 2 on all of your countertops, take a step back and see if any adjustments need to be made. You may go back in and add more colors even after it has dried! Allow 4 hours of dry time after applying the mineral colors before applying the 100% Acrylic Topcoat.



CHOCOLATE BROWN & SLATE TIPS: While working in 2-foot sections, and immediately after No. 2c has been applied, use the 4th piece of sponge to dry sponge and blend the colors. *For Chocolate Brown*, tap very lightly over the section to knock down and blend some of the red showing through in the brown. *For Slate*, push down with more pressure to blend all three colors together. This is a personal preference, as some may like it more blended than others.



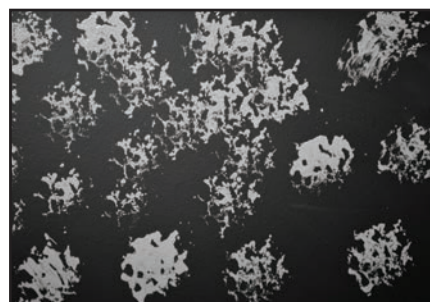
BOMBAY BLACK TIP: Be sure to stir both the Pearl Mica and Bronze Minerals well. Each color has metallic flakes that may settle in the bottom of the can. Apply the Bronze sparingly, as a little goes a long way.

WHITE DIAMOND TIP: For a brighter look, repeat an additional one to two layers of No. 2c. We recommend waiting until your countertops are dry to the touch before adding layers.

A GUIDE TO LAYERED SPONGING:

For best results, follow this guide for each Mineral Color application.

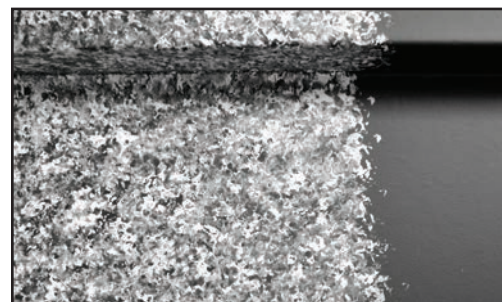
Should NOT Look like This:



Should Look like This:



Final Look of Each 2-Foot Section:



STEP 2: ROLL ON 100% ACRYLIC TOPCOAT

IMPORTANT APPLICATION NOTE: THE 100% ACRYLIC TOPCOAT HAS A BLUE TINT WHEN WET, BUT DRIES COMPLETELY CLEAR.

If you're using the 100% Acrylic Topcoat over an existing Giani finish, then it must be fully cured (applied for 14 days) prior to reapplying. Additionally, if you have any blemishes in your current finish, repair them first. For instructions, scroll to the bottom of the "How Do I Care for My Countertops?" tab in the Giani FAQs section at gianigranite.com.



After stirring the Topcoat can well, pour about half of the contents into your painter's tray.

WHITE DIAMOND & BOMBAY BLACK TIP: Both kits come with our 100% Acrylic Glitter Topcoat, and because the glitter tends to settle, make sure to scrape the bottom of the can as you stir. You should see the glitter particles float to the top as you mix.

Use the kit's Foam Brush and apply a narrow strip of Topcoat to the bottom and top of your backsplash in a section that is 2-foot wide (follow the same process as in Step 1). Continue using the Foam Brush to cut in around the corners and edges. Then, use the second Fabric Roller and apply a thin, even layer of the Topcoat onto the face of the backsplash, within the same 2-foot section.



Continuing to work within the same section, use the Fabric Roller to apply a thin, even layer of topcoat to the surface of your countertops, so your rolled areas blend with the brush strokes. Then, lightly back roll over the same section once again in long strokes, starting at your backsplash (crease) and ending at the bottom of the front edge (rolling toward yourself). Back rolling over the section will eliminate the possibility of visible lap lines in the cured finish. **IMPORTANT: Make sure not to over work the section by rolling too many times. The Topcoat gets tacky quickly and over working can cause a permanently textured finish.**



After you've covered your first section, quickly move onto the next 2-foot section, blending it with the previous section while both are still wet. Keep your strokes light and consistent, and if you miss a section, you'll have the opportunity to cover the area on your second coat. Repeat this process until the entire countertop is covered. When you've finished your first coat, rinse the Fabric Roller with warm water and allow it to dry. You'll use the same roller for the second coat. Allow the first coat to dry for at least 4 hours before applying a second.

Note: There is no need to sand between coats, unless the texture is not smooth. If you run your palm over the surface of your countertop when completely dry, and you would prefer a smoother finish, lightly sand your countertops with #600 grit sandpaper. Take care not to sand too vigorously on the backsplash and front edge of your countertop. Wipe up all sanding dust at least twice with a damp cloth and allow to dry completely before you proceed.



Once your countertops are dry after the first layer, pour the remainder of the contents of the Topcoat into your painter's tray and repeat the same process for your second layer. We recommend 2 coats, but you may apply a maximum of 3.

IMPORTANT: Remove the painter's tape after 1 hour. If you remove it later, it may become cemented into the Topcoat.

Very slowly remove the tape in order to prevent any debris from falling into the still-tacky Topcoat. You may need use a blade to score the tape to make it easier to peel away from the protected areas. You may also need a step stool to reach the tape above the backsplash so that you don't touch the countertop edge. Be sure to leave any ceiling fans turned off and windows closed to prevent any dust or lint from blowing into the Topcoat as it cures.



Wipe up any kit materials which may have fallen onto your floor or cabinets with a rag and warm, soapy water, and take off your shoes in order to prevent tracking the kit materials into other areas of your home. If you get the Primer, Minerals, or Topcoat on your skin, safely remove it with mild dish soap and water.

Wait at least 48 hours before applying clear acrylic caulk (not silicone) around your backsplash and sink.

WHEN CAN I USE MY COUNTERTOPS AGAIN?



Once applied, the 100% Acrylic Topcoat will be tack free in 4 to 6 hours. You can use your dishwasher after 24 hours. After 48 hours, you may lightly use your counters, but it is recommended to wait the full cure time of 14 days (time it takes for your finish to reach its maximum hardness) before cleaning your counters with anything but mild soap and water or placing heavy objects on them. **Food Safety:** Once Gianigranite 100% Acrylic High Gloss Topcoat fully cures, it's completely inert.

MATERIALS DISPOSAL:

Clean equipment and splatters with warm, soapy water. Dispose of contaminated absorbent material, containers and unused product in accordance with federal, state, and local regulations. Avoid the generation of dust during clean up. Collect dust using a vacuum cleaner with a HEPA filter. Prevent product from entering drains. Stop the flow of material if this is without risk. Contains components very toxic to aquatic life. Avoid release into the environment. Contain and collect spillage.

CARE & MAINTENANCE:



Only use mild dish soap and water or Gianigranite Countertop Cleaner. Never use harsh chemicals such as bleach, household cleaners, Magic Eraser®, Pine Sol®, Windex®, disinfectant wipes, or any abrasives such as Comet® or Soft Scrub®. Do not use polishes or granite cleaners. Even diluted solutions of a cleaner and water will wear down the durability of the topcoat over time. Never use harsh natural cleaners such as vinegar, rubbing alcohol, hand sanitizers, air freshener oils, or essential oils. Never use scouring pads.

Avoid standing water or trapped water under dishes for long periods. If you notice water, wipe it up immediately with a dry towel. If water has been trapped under a cup overnight and the surface has started to discolor, remove the cup and let the counter dry fully before touching the area. The topcoat will be in a weakened state and may easily scratch during this time. If allowed to fully dry, it will return to its original hardness and gloss. If food gets stuck on it, lay a warm, wet cloth over the food for a few minutes and gently wipe clean with the cloth.



Cutting Boards & Hot Surfaces: Just like granite and Formica, it is not recommended to cut or chop directly on Gianigranite. You'll want to use a cutting board for any food prep. Using a knife over Gianigranite can scratch the surface. Although Gianigranite is heat resistant up to 150° F, we recommend always using a hot pad or trivet for items directly from the stove, oven, or other hot surfaces.

Please note: Even if you follow the application instructions perfectly, your Gianigranite may show signs of wear if you don't follow these proper care instructions. With the proper care, Gianigranite will last as long as any conventional countertop.

Over time, if you wish to add additional reinforcement to your countertops, you may apply a fresh layer of clear topcoat. You don't have to remove your existing topcoat. Lightly sand it to knock down its gloss and smooth it out. Use a damp cloth to wipe up the sanding dust and allow it to dry before adding additional topcoat. Remember, after the reinforcement topcoat has been applied, your countertops will need to cure again. For the full instructions, visit gianigranite.com and click on the FAQ menu at the top of the page.



When your project is finished, send us your Before & After pictures or tag us on social media. Your photos will inspire others. Let us know if you have any questions and enjoy your countertop makeover!

GIANI, Inc. 1 Lincoln Way, St. Louis, MO 63120
www.gianigranite.com // info@gianigranite.com
 800-650-5699 // +1 314-241-3500
 International Emergency: +49 69-2222-5285

LET'S BE FRIENDS!

Follow us on Social Media for inspiration.



IMPORTANT INFORMATION:



KEEP FROM FREEZING. IF FROZEN, LET THAW.

In the winter, Giani Iron Core Primer, Minerals, and Topcoat are at risk for freezing due to the cold temperatures they may be exposed to during warehouse storage and delivery. Frozen materials can sometimes be tricky to determine initially because your cans won't feel cold to the touch - however, the contents will exhibit a grainy/slushy texture. But not to worry, each component will completely recover! We recommend allowing all materials to recover at room temperature for one week before applying. **DO NOT apply kit materials if they appear clumpy or frozen. Apply at 72°F - 75°F.**



FIRST AID INSTRUCTIONS

Inhalation: Remove source of exposure or move person to fresh air and keep comfortable for breathing. If exposed/feel unwell/concerned: Call a POISON CENTER/doctor.

Skin Contact: Rinse/wash with lukewarm, gently flowing water and mild soap for 15-20 minutes or until product is removed. If skin irritation occurs or you feel unwell: Get medical advice/attention. **IF exposed or concerned: Get medical advice/attention.**

Eye Contact: Remove source of exposure or move person to fresh air. Rinse eyes cautiously with lukewarm, gently flowing water for several minutes, while holding the eyelids open. Remove contact lenses, if present and easy to do. Continue rinsing for a duration of 15-20 minutes. Take care not to rinse contaminated water into the unaffected eye or onto the face. If eye irritation persists: Get medical advice/attention.

Ingestion: Rinse mouth. Do NOT induce vomiting. Immediately call a POISON CENTER/doctor. If vomiting occurs naturally, lie on your side, in the recovery position. Give 3 or 4 glasses of water to drink. Never give anything by mouth to an unconscious person.



EXPOSURE CONTROLS/ PERSONAL PROTECTION INSTRUCTIONS

Eye Protection: Wear eye protection with side shields or goggles. Wear indirect-vent, impact and splash resistant goggles when working with liquids. If additional protection is needed for entire face, use in combination with a face shield.

Skin Protection: Use of gloves approved to relevant standards made from the following materials may provide suitable chemical protection: PVC, neoprene or nitrile rubber gloves. Suitability and durability of a glove is dependent on usage, e.g. frequency and duration of contact, chemical resistance of glove material, glove thickness, dexterity. Always seek advice from glove suppliers. Contaminated gloves should be replaced. Use of an apron and over-boots of chemically impervious materials such as neoprene or nitrile rubber is recommended to avoid skin sensitization. The type of protective equipment must be selected according to the concentration and amount of the dangerous substance at the specific workplace. Launder soiled clothes or properly disposed of contaminated material, which cannot be decontaminated.

Respiratory Protection: If engineering controls do not maintain airborne concentrations to a level which is adequate to protect worker, a respiratory protection program that meets or is equivalent to OSHA 29 CFR 1910.134 and ANSI Z88.2 should be followed. Check with respiratory protective equipment suppliers. In poorly ventilated areas, a cartridge mask NIOSH approved for organic vapors is recommended under the following conditions: emergency situations, when product vapor concentration is greater than 20 ppm for a period longer than 15 min., during repair and cleaning of equipment, during transfer or discharge of the product.

Appropriate Engineering Controls: Provide exhaust ventilation or other engineering controls to keep the airborne concentrations of vapors below their respective threshold limit value.

LIMITED MATERIAL WARRANTY:

Giani, Inc. warrants, for a period of 12 months from the date of application, if applied during the materials' proper shelf life (each Giani material has a shelf life of 2 years), that its products are free of defects in material and workmanship, when applied and maintained in accordance with surface preparation and application recommended by Giani. This limited warranty covers a one-time fulfillment of replacement material(s) or a product refund excluding shipping costs. After 12 months, customers are expected to maintain their countertops, garages, cabinets, appliances, and furniture/projects, and take the proper care as listed under the FAQ/Instructions and cover any damages that ensue if care is not maintained.

This Warranty Does Not Cover:

- Dissatisfaction with the color, finish/shine, or application process. Problems or damage due to application or maintenance other than as recommended by Giani in its printed labels and instructions.
- Labor costs (as these are DIY kits and designed for use by anyone and does not require the use of a contractor or professional painter).
- Damage due to accidents or damage caused by chemicals not approved for exposure by Giani, Inc.
- Usage of third-party paints over any Giani product, such as other topcoats/epoxies, other than as recommend by Giani in its printed labels and instructions.
- Minor chips or wear from excessive impact or friction.
- Returns, exchanges, or refunds from a retail store or an online marketplace other than gianigranite.com.

This warranty requires that the customer provide pictures and answer a series of questions to determine if there are defects with any Giani products. It also allows customer support to assess, and provide a positive solution on how to fix any issues so that they do not persist. **Please contact us at info@gianigranite.com if you are concerned about your Giani product.**