



# INSTRUCTIONS

Emperador Grey Marble - Covers 35 Sq. Feet

## BEFORE USING GIANI® MARBLE



### WATCH OUR HOW-TO VIDEOS!

Visit [gianigranite.com](http://gianigranite.com) and select the "Videos" link on the top menu. Watch our videos and read through all of the instructions prior to starting your project, as they are meant to make your transformation quicker and easier!



### LIVE CHAT WITH US!

Have a question? We're here to help! Chat with us Mon. through Fri. 7AM to 3:30 PM CST on [gianigranite.com](http://gianigranite.com). Just look for the chat bubble at the bottom right corner. You can also reach us by email at [info@gianigranite.com](mailto:info@gianigranite.com)

## CAN BE USED ON

- Formica®
- Laminate
- Primed Plastic
- Wood\*
- Cultured Marble\*
- Real Granite\*\*
- Corian®\*
- Backsplashes
- Fireplace Mantels
- Metal\*
- Ceramic Tiles\*
- Real Concrete\*\*

### Additional items you will need:

- SOS Pad for countertop prep
- Wax paper for protecting backsplash and walls
- One roll of painter's tape
- Paper towels for cleanup
- Paint tray for primer
- Paper plates to protect surfaces from spills
- Nail polish remover (acetone) for clean up
- Extra #600 grit sandpaper
- Safety glasses to avoid accidental eye contact
- Tweezers to remove fallen dust from topcoat
- Acrylic or Silicone caulk infused with Latex/Acrylic

\* De-gloss with a very fine #300 grit sandpaper, then wipe clean with a damp cloth. For unsealed wood, apply a good, water-based wood primer before applying the Primer. Apply the wood primer with a foam roller for smooth finishes because thicker nap rollers will leave a textured finish. Continue with standard prep instructions.

\*\* For granite and concrete that are fully cured, clean the surface with xylene or lacquer thinner, and then wipe-up with rubbing alcohol before applying the Primer. Follow with standard prep instructions. Please note, xylene and lacquer thinner are very flammable!

**DO NOT use Giani® Marble on tubs, flooring, or shower doors/floors. DO NOT use Giani® Marble if any paint or epoxy appears frozen or damaged. You MUST measure your counters before applying Giani®. DO NOT use a single kit on a surface larger than 35 sq. feet.**

## SURFACE PREP



Remove any latex or caulking with a box cutter. Do NOT use paintable caulk because you may experience cracking. We recommend caulking once you've completed painting all of your countertops.

**Note:** Clean up caulking residue with rubbing alcohol.



Use a scouring pad, such as an SOS® or Brillo® pad, to remove grease and dirt. DO NOT use any other cleaners. Rinse with water, at least twice, to remove all cleaner residue.

**Note:** It is NOT necessary to sand as the scouring pad will rough up the surface.



Patch any deep nicks or seams with wood filler (Giani will cover up thin, shallow scratches). Once dry, sand the patch smooth with a #300 fine grit sandpaper. Wipe up the dust with a damp cloth.

**Note:** Giani will not level or smooth out any pre-existing textured surfaces.



Using wax paper and painter's tape, such as Frog® Tape, protect the following areas of your project work space:

- Above backsplash or exposed walls (see Note 1)
- Around sinks and fixtures (see Note 2)
- Around refrigerators (see Note 3)



Use the included plastic tarps to cover your lower cabinets, floors, and appliances. This will protect against spills and drips, and to allow the topcoat to self-level over the edge of your countertop.

**Note:** Secure the tarps with painter's tape along the entire underside edge of your countertops.

**Note 2:** Use painter's tape to tape the edges of your sink. Then using wax paper, loosely tape over your sink and wrap around your faucet and fixtures to protect from accidental contact with kit materials.

**Note 3:** If your refrigerator is in your work area, apply wax paper to the side that faces your countertops. You only need to protect what will potentially be exposed during Step 2, as it is a spray application.

**Note 1:** Cut the wax paper to the desired length and, using painter's tape, loosely attach it to your backsplash or walls. Leave approximately 1/2" exposed between the bottom of the wax paper and your countertop. This will allow you to use painter's tape to attach the wax paper firmly to the surface and protect it from accidental contact with any of the kit materials.



---

## STEP 1: GREY BASE PRIMER

---



After stirring the Grey Base Primer well, pour half of the contents into your painter's tray. Use the Foam Brush to cut in around creases, corners, and edges, and use the roller with the Fabric Cover to fill in the rest. Edge in 2 to 3-foot sections at a time and then immediately roll that section so your brush strokes blend in with the rolled areas.

**IMPORTANT: The Foam Roller Covers should be saved for the Epoxy Topcoat application.**

If you have a connected backsplash, we recommend using the Foam Brush for the first coat, and the roller for the second. It will be easier to establish the base with the brush, especially when there are obstacles like a sink. Using the roller for the second coat will give you total, even coverage of the primer.



Move onto the next section, blending it with the previous section while both are still wet. Repeat until the entire countertop is covered. Make sure to work quickly and keep a wet edge so as not to create lap lines. Allow the primer to dry for at least an hour. The first coat may look streaky or uneven, but you will reach full coverage when you apply the second coat.

---

## STEP 2: SPONGE & BLEND

---



Once your first layer of primer is dry, pour half of your Urban Steel mineral paint onto a paper plate and cut your sponge into four pieces.

Start applying your second layer of primer by edging in 2 to 3-foot sections at a time with the foam brush and rolling that section with a thick layer of primer to blend your brush strokes. While the primer is still wet, dab a piece of sponge into the Urban Steel mineral paint and apply it over the freshly primed area in a sparse and random pattern. Next, wet blend the Urban Steel paint into the wet primer using the sponge. This technique creates a blended look similar to concrete. **TIP:** For hard-to-reach areas like backsplash creases, cut a small piece of sponge.



This kit allows for customization. You can adjust the color intensity by controlling the amount of Urban Steel blended into the primer. You can opt for a speckled look or heavily blend for a softer stone appearance.

Repeat the process for each 2 by 2 section until the entire counter is covered. Blend each section together to avoid harsh lines. If your sponge becomes oversaturated, you may use another piece to maintain consistent texture and color across the surface.

**Allow primer to dry for a minimum of 2 hours before applying veins.**

---

## RESEARCH & PRACTICE

---



We highly recommend researching examples of grey marble before starting your vein application. You can use a quick internet search or find samples from your local hardware store. For our grey marble look, we used Shutterstock.com to search for examples. Seeing images of marble will help give you an idea of how your veins should flow and determine how decorative you would like the final look.

**Please refer to the VEIN SPRAY PREP on the next page before practicing.**



Another helpful part of this process is to practice applying the veins. Using your kit's included black practice board and the white Vein Spray, get a feel for the technique of spraying your veins. Try spraying from different distances to create thick or thin veins, moving your arm while spraying to create directional "flows," and varying the pressure on the spray nozzle to create long veins, short veins, and small flecks that dot the surface of real grey marble. When you run out of the practice board, just flip it over. **TIP:** It may be helpful to have some extra black paper handy to keep practicing until you feel comfortable with your technique. Protect the surrounding surfaces for easy cleanup and to prevent contact.

### STEP 3: WHITE VEINING



**VEIN SPRAY PREP:** Use tweezers to twist the black spray nozzle to a vertical position. Refer to the provided photo for guidance. Then, remove the red spray nozzle, turn the can upside down, and the black safety washer will fall off. Keep the washer for future storage. Gently replace the spray nozzle, turn the can upside down, and shake vigorously for 30 seconds. Spray a few times to prime the nozzle and ensure it's in good working order.

Before you begin, please note that this process is not necessarily difficult, but it does take some practice and patience. Remember, it's paint so you're never stuck with it if you don't like how your application is going.



Begin by holding the Vein Spray can at chest height, and stand about 6" back from your counters. Press the nozzle with enough force to spray the contents. We recommend spraying in long, continuous lines, keeping your arm in the same position and slowly walking the length of your section, allowing the veins to fall onto the surface of your countertops. For this look, we recommend using long motions to achieve the look of long, continuous, and sparse veins. Just take your time and remember the techniques you developed while practicing.



Work in approximately 6-foot sections, including the front edge of your countertops as you create your veins. This will ensure that you don't overspray the edges. Also, make sure you don't focus too heavily on each section. To create an authentic grey marble finish, less is truly more. Keep in mind that it's OK to leave empty spaces where there are no veins, even though it can be tempting to fill in all of the empty areas. Grey marble does not have a defined pattern. The veins can look random: dense in some spots and very sparse in others. Just follow the examples you found online and paint enough veins to recreate the look. This will help you avoid overworking your countertops.



Continue veining the surface of your countertops until you've achieved your desired look. Be sure to take a step back every once in a while to see how your veins look from a distance since it can be easy to feel overwhelmed by the amount of empty space that you'll be working with. If some areas seem too bare, simply spray a little more to enhance the look. If some areas are too heavily veined, see the section titled, **FIXING VEINS**, in these instructions. That's the beauty of this kit; it's customizable.

Allow your veins to dry for at least 2 hours before moving on to the epoxy.

### BACKSPLASH:



If you have an attached backsplash save this for last during the veining step. While some veins may have landed on your backsplash when applying them to the surface of your countertops, we recommend making another pass. This time just focus your attention on adding accent veins to the backsplash to enhance the finished look, being careful not to overwork the area.

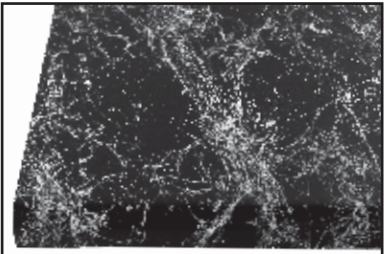
**TIP:** Spray closer to your wax paper covered walls to direct your veins onto the backsplash.

Allow your veins to dry for 2 hours. While drying, use scissors to remove any veins hanging from the bottom of your countertop edge and cut veins that droop from your backsplash to the countertop surface. Cutting these veins will allow them to lay flat when applying the topcoat.

### A GUIDE TO VEIN STYLES :

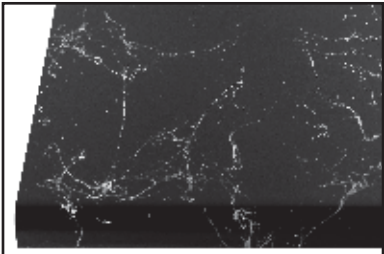
For the best results, follow this guide for your vein application. We recommend experimenting with these styles while you practice to develop a feel for how to vary your technique. These are just suggestions, but can serve as a reference if you want to create a similar overall look.

#### Thick Veins:



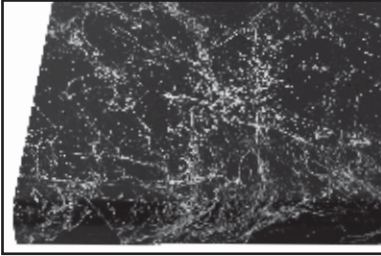
For thick mineral flows hold the Vein Spray parallel to the surface your countertops, and about 12" away. Without moving your arm, spray a short burst in the direction you would like your veins.

#### Thin Veins:



For thin veins, hold the Vein Spray at chest height and about 6 inches away from the countertop. Spray a long burst while walking the length of your section allowing the spray to fall in place.

**Dense Veins:**



For densely packed veins, rather than trying to fill a section at a time with the amount of vein coverage you would like, make more than one pass over your countertops. Occasionally change the direction of your veins to keep from “stacking” your veins.

**Sparse Veins:**

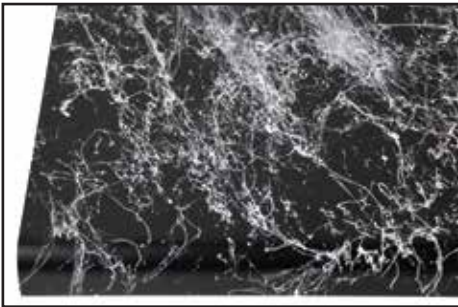


For veins that are sparse, or spread out over larger areas of black, use the technique for creating Thin Veins and spread out the application over 4-foot instead of the recommended 3-foot sections. You can always add more if you think the vein coverage is too sparse.

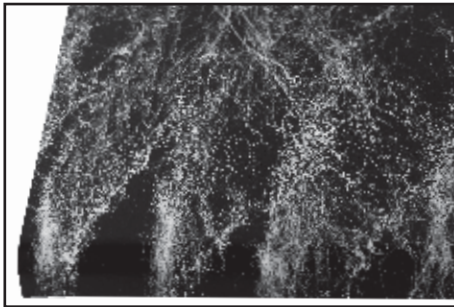
**COMMON MISTAKES:**

---

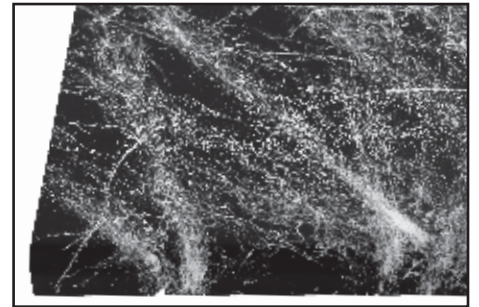
*Too Many or “Stacked” Veins*



*Spraying Too Close to the Countertop*



*Holding the Nozzle Down Too Long*



Adding too many veins, spraying too close to the countertop, and holding the nozzle down too long are the most common mistakes while creating veins. However, with a few technique corrections, they are easy to avoid. Just remember to maintain proper distance from your countertops and stick with short, controlled bursts of the Vein Spray. This will keep your application looking natural.

**FIXING VEINS:**

---



Now that your veins are complete, take a step back and evaluate if you would like to add or remove any veins. To add additional veins, you can use the same techniques as you did with the first pass over the surface of your countertops.

If you step back and see a section of your countertops where the veins are too heavy or discover an area that isn't consistent with your desired look, you can easily repair that section.



Allow your veins to dry for 2 hours before attempting to repair the section. Once dry, simply use the included #600 grit sandpaper to smooth out the peaks of the veins. Take care not to sand too aggressively. You really just want to level the height of the vein. Once your repair section is smooth, wipe up the sanding dust with a damp cloth and allow the surface to dry.

Then, using pieces of your sponge, dab the Grey Base Primer and the Urban Steel mineral over the repair section, blending them together seamlessly. Allow the paint to dry for 4 hours.

When fully dry, you may use your Vein Spray and re-create your veins to the desired look within the repaired section, adding veins to blend any adjacent sections if necessary.



If you need extra Giani Roller Covers, Grey Base Primer, or additional materials to repair sections of your countertops during your application, they are available on our website at [www.gianigranite.com](http://www.gianigranite.com). Just click on the SHOP menu and browse to A LA CARTE.

**Allow your corrections to dry for at least 4 hours before moving on to the epoxy.**

## STEP 3: EPOXY RESIN TOPCOAT

**STOP! Did you measure your counters? Extending the epoxy beyond 35 sq. feet will result in imperfections and void the warranty.**

**APPLYING GIANI® EPOXY RESIN TOPCOAT IS TIME SENSITIVE.** Read all instructions carefully and watch the application videos on our website before beginning this step. **Also, please review the included Safety Data Sheet (SDS) prior to use.**

If you're applying the Epoxy Resin Topcoat over an existing Giani High-Gloss or Glitter Topcoat finish, then it must be fully cured for 14 days prior to using the epoxy. If you have any blemishes in your current finish, repair them before applying the epoxy.

### PREP WORK



**1 SAND**

Use the included #600 grit sandpaper to lightly sand your entire countertop. This will smooth out any peaks created during the veining step. Don't use a coarser or lower grit because it will create visible scratch marks.

**Note:** You may use a sanding block for even, consistent pressure, except on the edges.



**2 CLEAN**

Once the peaks of the veins are somewhat smooth, wash away the sanding dust with a damp cloth and allow to dry.

**Note:** Wipe your countertops 2-3 times to ensure all sanding dust is cleaned from the surface, edges and backsplash. Once the epoxy is applied, any leftover dust will be trapped in the finish.



**2 RESTRICT**

Restrict access to your workspace. Make sure to keep the area free of pets and children to minimize accidental contact with the epoxy. **TIP:** Post signs around your workspace announcing that your countertops are wet and should not be used until the surface has cured for at least 48 hours.



**4 TAPE**

Using painter's tape, create "dams" on the edge of your countertops that are next to appliances. Firmly press the sticky side of the tape against the edge of the countertop with about a half-inch of the adhesive side sticking up. This will protect appliances and prevent the epoxy mixture from falling off the edge of your countertops, allowing it to properly self-level.

### MIXING THE COMPONENTS

**IMPORTANT NOTE ABOUT CURING:** Once the Epoxy Resin Topcoat components have been mixed, the reaction cannot be stopped. The topcoat comes in 3 sets. Each set contains 2 cans: one can of Activator and one can of Resin. The amounts are designed so that the contents of the Epoxy Activator will fit perfectly into the Epoxy Resin can. The set is provided to give plenty of time to apply the mixture to the surface of a single 6-foot section. Failure to empty all of the Activator into the Resin will prevent the finished application from completely curing. The surface of your countertop will remain tacky and need to be stripped.



With your safety glasses and gloves on, open the contents of the first set of Epoxy Resin Topcoat. Keep in mind that a set is 1 can of Resin and 1 can of Activator.

Pour the **ENTIRE** can of the Epoxy Activator into the Epoxy Resin can, using a stir stick to make sure all of the contents are removed.

**TIP: Discard the empty Epoxy Activator can so that you only have the necessary containers in your work area, and so that you are not tempted to use it as a holder for your roller between Epoxy sets.**



Then, using a stir stick, stir the epoxy mixture vigorously for **3 minutes and 30 seconds**. You **MUST** scrape the sides and bottom to mix thoroughly. Failure to do so will result in improperly mixed epoxy that will not cure correctly.

**IMPORTANT:** Time the mixing **EXACTLY**. If each material is under-mixed it will prevent the finished application from completely curing.

⚠ **Health & Safety:** *Giani® Epoxy Activator contains corrosive material: Isophoronediamine.* Wash hands after use. Do not get in eyes, on skin, or on clothing. Do not breathe vapors or mists. Use good personal hygiene. Eating, drinking, and smoking in work areas is prohibited. Remove contaminated clothing and protective equipment before entering eating areas. Eyewash stations and showers should be available in areas where this material is used and stored. Individuals with existing respiratory disease such as chronic bronchitis, emphysema, or asthma should not be exposed. Wear appropriate clothing to avoid skin contact during application.

## EPOXY APPLICATION



**AFTER MIXING THE COMPONENTS, YOU HAVE ABOUT 30 MINUTES TO COMPLETELY COAT THE SECTION** before it stops flowing adequately. It takes about 5 to 10 minutes to coat one 6-foot section.

Slowly pour the entire mixture on your first 6-foot section of countertops (**one single set covers up to 12 sq. feet**). It helps to pour the mixture in 3 streams to make sure you'll have even coverage. Start by pouring one stream at the base of your backsplash, one in the center of your countertops, and one close to the edge. You'll want to pour out the contents onto your countertops immediately after mixing because the epoxy's hardening rate will accelerate when left in the can. If you have an object within your 6-foot section such as a sink, simply use the proportionate amount for one side of the sink and continue on the opposite side of the sink until the entire mixture has been used. Within the same section, use an included 2" Angle Brush and transfer some of the Epoxy mixture to your attached backsplash, gently coating it as you brush along the 6-foot section. Do not use epoxy on a backsplash over 4" tall. Lightly brush back across the length of the backsplash once or twice to minimize the possibility of runs and bare spots. Then, use the brush to coat the epoxy around the perimeter of the section as well as along the bottom of the backsplash. This will make filling in the center of the section easier. Brush out the epoxy a little from the backsplash crease because the epoxy can pool there.



Next, use one of your kit's Foam Rollers to slowly and to evenly distribute the epoxy over the surface of your section. Since the epoxy is self-leveling, **try not to overwork your application**. It helps to hold the roller handle gently between your fingers and thumb, and lightly guide the epoxy over your countertops rather than rolling it on. This will keep you from gripping the handle too tightly, and applying too much pressure to the roller. Too much pressure can spread the mixture too thin and cause defects in the cured finish. To make sure they're fully coated, lightly roll the edge of your counters. It's okay if the epoxy runs onto the tarps - you want a good layer of epoxy on your edges since they tend to experience the most amount of wear and friction, especially around the sink area. **NOTE:** A small amount of epoxy may continue to drip off the front edge of your countertop for a short while as it self-levels; typically about 30 to 60 minutes.



After you've covered your first section, mix a second set of Epoxy Resin and continue on to the next section, blending the 2 sections together to avoid creating a seam. Continue the same process until your entire countertop is coated. **IMPORTANT: Once you've rolled on your topcoat, do NOT add more epoxy unless you have bare spots. Doing so will result in adding an unbalanced proportion of the mix onto the new epoxy which creates a blemish.** If your remaining section of countertop is less than 6 feet, use the appropriate amount of Epoxy Resin to cover the area. For instance, if your final section is 3 feet, mix up the last full set of epoxy and only use half.



If you have a section longer than 6 feet, mix and apply the next set of epoxy right after completing the first so that the 2 batches flow together seamlessly. Be sure to use a new stir stick with each new epoxy set to prevent contamination. Also, be sure to set your foam roller on a protected surface while mixing the next set. **Do NOT set your foam roller in an Activator can.**

Once you're finished applying the Epoxy Resin, grab a bright light and closely inspect your countertops for bare spots, bubbles, or lint. You'll have about 40 minutes after applying the epoxy to correct any flaws. To fix a small bare spot, use the 2" Brush to drizzle a little epoxy onto the spot and dab lightly.



Most of the trapped air will release on its own within a few minutes of rolling. However, for the occasional bubble, lint, or dust, use tweezers to gently pop the bubbles, or pull out the debris. Just make sure not to use the tweezers after an hour. At this point the epoxy is starting to cure, and doing so may leave a divot. **NOTE:** The Epoxy Resin Topcoat does not require a blow torch or heat gun to release any excess air because it has been formulated with air release agents.

**IMPORTANT: Remove the tape precisely between 1 to 2 hours after you've finished applying the epoxy. If you remove the tape earlier, then the epoxy may continue to self-level onto an appliance, and if you remove the tape later, then it may create jagged edges and become cemented into the epoxy.**

Slowly remove the tape in order to prevent any debris from falling into the still tacky epoxy. You may need a step stool to reach the tape above the backsplash so that you don't touch the countertop edge. Be sure to leave any ceiling fans turned off and windows closed to prevent any dust or lint from blowing onto the epoxy as it settles. Do NOT attempt to remove any debris from the epoxy after one hour, it will create a divot in the final finish and the epoxy will not fill it back in. If this occurs, the debris can be buffed out once the epoxy has fully cured.



Wipe up any kit materials which may have fallen onto your floor or cabinets with a rag and acetone, and take off your shoes in order to prevent tracking the kit materials into other areas of your home. If you get the epoxy mixture on your skin, safely remove it with vinegar, followed by soap and water.

**Wait 48 hours before applying acrylic caulk or silicone caulk infused with latex or acrylic around your backsplash and sink.**

## IMPORTANT INFORMATION

---



### KEEP FROM FREEZING. IF FROZEN, LET THAW.

During the winter months, the contents of Giani® Marble are at risk for freezing due to exposure to possible cold temperatures during storage and delivery. It can be tricky to determine if the components are frozen because your cans won't feel cold to the touch - however, the polymers in the kit materials will exhibit a grainy/slushy texture. Not to worry, the components are not permanently damaged and they will completely recover! We recommend allowing the contents of your kit to thaw at room temperature for 2-3 full days before applying. **DO NOT apply your Marble Kit if any of the materials appear clumpy or frozen. Apply at 72° - 75°F.**



### FIRST AID INSTRUCTIONS

**Inhalation:** Remove source of exposure or move person to fresh air and keep comfortable for breathing. If exposed/feel unwell/concerned: Call a POISON CENTER/doctor.

**Skin Contact:** Rinse/wash with lukewarm, gently flowing water and mild soap for 15-20 minutes or until product is removed. If skin irritation occurs or you feel unwell: Get medical advice/attention. IF exposed or concerned: Get medical advice/attention.

**Eye Contact:** Remove source of exposure or move person to fresh air. Rinse eyes cautiously with lukewarm, gently flowing water for several minutes, while holding the eyelids open. Remove contact lenses, if present and easy to do. Continue rinsing for a duration of 15-20 minutes. Take care not to rinse contaminated water into the unaffected eye or onto the face. If eye irritation persists: Get medical advice/attention.

**Ingestion:** Rinse mouth. Do NOT induce vomiting. Immediately call a POISON CENTER/doctor. If vomiting occurs naturally, lie on your side, in the recovery position. Give 3 or 4 glasses of water to drink. Never give anything by mouth to an unconscious person.



### EXPOSURE CONTROLS/ PERSONAL PROTECTION INSTRUCTIONS

**Eye Protection:** Wear eye protection with side shields or goggles. Wear indirect-vent, impact and splash resistant goggles when working with liquids. If additional protection is needed for entire face, use in combination with a face shield.

**Skin Protection:** Use of gloves approved to relevant standards made from the following materials may provide suitable chemical protection: PVC, neoprene or nitrile rubber gloves. Suitability and durability of a glove is dependent on usage, e.g. frequency and duration of contact, chemical resistance of glove material, glove thickness, dexterity. Always seek advice from glove suppliers. Contaminated gloves should be replaced. Use of an apron and over-boots of chemically impervious materials such as neoprene or nitrile rubber is recommended to avoid skin sensitization. The type of protective equipment must be selected according to the concentration and amount of the dangerous substance at the specific workplace. Launder soiled clothes or properly dispose of contaminated material, which cannot be decontaminated.

**Respiratory Protection:** If engineering controls do not maintain airborne concentrations to a level which is adequate to protect worker, a respiratory protection program that meets or is equivalent to OSHA 29 CFR 1910.134 and ANSI Z88.2 should be followed. Check with respiratory protective equipment suppliers. In poorly ventilated areas, a cartridge mask NIOSH approved for organic vapors is recommended under the following conditions: emergency situations, when product vapor concentration is greater than 20 ppm for a period longer than 15 min., during repair and cleaning of equipment, during transfer or discharge of the product.

**Appropriate Engineering Controls:** Provide exhaust ventilation or other engineering controls to keep the airborne concentrations of vapors below their respective threshold limit value.

---

### LIMITED MATERIAL WARRANTY:

Giani®, Inc. warrants, for a period of 12 months from the date of application, if applied during the proper shelf life (Giani® Marble has a shelf life of 1.5 years), that its products are free of defects in material and workmanship, when applied and maintained in accordance with surface preparation and application recommended by Giani®. This limited warranty covers a one-time fulfillment of replacement material(s) or a product refund excluding shipping costs. After 12 months, customers are expected to maintain their countertops, garages, cabinets, appliances, and furniture/projects, and take the proper care as listed under the FAQ/Instructions and cover any damages that ensue if care is not maintained.

#### This Warranty Does Not Cover:

- Dissatisfaction with the color, finish/shine, or application process. Problems or damage due to application or maintenance other than as recommended by Giani® in its printed labels and instructions.
- Labor costs (as these are DIY kits and designed for use by anyone and does not require the use of a contractor).
- Damage due to accidents or damage caused by chemicals not approved for exposure by Giani®, Inc.
- Usage of third-party products over any Giani® product, such as other topcoats, other than as recommend by Giani® in its printed labels and instructions.
- Minor chips or wear from excessive impact or friction.
- Returns, exchanges, or refunds from a retail store or an online marketplace other than gianigranite.com.

This warranty requires that the customer provide pictures and answer a series of questions to determine if there are defects with any Giani® product and lets us assess how to provide a positive solution on how to fix any issues so that it does not keep happening. **Please contact us at [info@gianigranite.com](mailto:info@gianigranite.com) if you are concerned about your Giani® product.**

## WHEN CAN I USE MY COUNTERTOPS?



Once applied, your countertops will be tack free in 6 to 8 hours. You can use your dishwasher and remove the tarps after 24 hours. After 48 hours, you may lightly use your counters, but it is recommended to wait the full cure time of 7 days (time it takes for your finish to reach its maximum hardness) before cleaning your counters with anything but mild soap and water or placing heavy objects on them. **Food Safety:** Once the Epoxy Resin Topcoat fully cures, it's completely inert.

### MATERIALS DISPOSAL

Dispose of empty product containers properly. Do not use sawdust or other fine cellulose materials to absorb any waste Epoxy Activator. Do not dispose of the Epoxy Activator in the trash containing sawdust or other fine cellulose materials as spontaneous combustion may occur. Do not dispose in a liquid state - the two cans can be mixed and cured in small quantities to create a non-hazardous inert solid. Unused, unmixed Giani® Epoxy Resin and Epoxy Activator have shelf-lives of 1.5 years when stored in the sealed containers.

**CAUTION!** Large containers of curing Epoxy Resin Topcoat can get hot enough to ignite surrounding combustible materials and give off hazardous fumes. Consequently, place any cans of unused, mixed epoxy in a safe and ventilated area, uncovered, and away from people and combustible materials. The excess mixture will cure and harden into a solid mass. Dispose of the mass only if the cure is complete and has cooled, which typically takes about 8 hours. Follow federal, state, or local disposal regulations. The disposal guidelines above may not comply with the laws and regulations in your area. If you are uncertain, refer to local and national regulations.

### CARE & MAINTENANCE



To clean your Giani® Countertops you can use mild dish soap and water, Giani® Countertop Cleaner, Lysol wipes, Windex®, Purell Multi Surface and Mrs. Meyers. Never use harsh chemicals such as bleach, or any abrasives such as Comet® or Soft Scrub®. Do not use polishes or granite cleaners. Even diluted solutions of a cleaner and water will wear down the durability of the finish over time. Never use harsh, natural cleaners such as vinegar, rubbing alcohol, hand sanitizer, air freshener oils, or essential oils. Never use scratch pads or microfiber cloths.

**Cutting Boards & Hot Surfaces:** Just like with real quartz, it is not recommended to cut directly on your new Giani® Countertops. You need to use a cutting board for any food prep to avoid scratches. Although Giani® Epoxy is heat resistant up to 250°F, always use a hot pad or trivet for items directly from the stove or oven.




**Stains:** You can remove stains with rubbing alcohol and a paper towel. You can also very lightly use a Magic Eraser for stubborn stains. **NOTE:** extended use of a Magic Eraser can dull your epoxy overtime. Therefore it is only recommended to use one if it is absolutely necessary.

**UV Rays:** If possible, minimize direct, all-day UV contact. All surfaces will exhibit some UV effect over time; Giani® Marble's UV effect will be minimal, however, we recommend minimizing direct UV contact if possible.

**Please note:** Even if you follow the application instructions perfectly, your countertops may show signs of wear if you don't follow these proper care instructions. With the proper care, Giani® Marble will last as long as any conventional countertop.



When your project is finished, send us your Before & After pictures or tag us on social media. Your photos will inspire others. Let us know if you have any questions, and enjoy your countertop makeover!

 **GIANI®, Inc. 1 Lincoln Way, St. Louis, MO 63120**  
[www.gianigranite.com](http://www.gianigranite.com) // [info@gianigranite.com](mailto:info@gianigranite.com)  
 800-650-5699 // +1 314-241-3500  
**International Emergency: +49 69-2222-5285**

**LET'S BE FRIENDS!**  
 Follow us on Social Media for inspiration.

