

# DLUX<sup>TM</sup> Baby

# #1 BABY SAFETY KIT

It's important to choose a suitable place to install the locks, so look at this image to see some examples. To optimize the strength of the locking mechanism, the best place to install the locks is at about 1 inch from the edge of the drawer or cupboard door.

You can use magnetic safety locks here



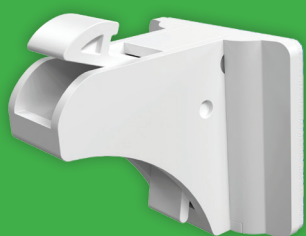
Thank you for purchasing our #1 Baby Safety Kit, which is comprised of 21 magnetic cabinet locks with 3 keys, and replacement EXTRA Strength Acrylic Tape in case the locks ever need to be repositioned. We want all of our customers to have a 5-star experience with our products so we put these instructions together to make setting up the locks as quick and easy as possible. Take a look at the pictures below to know exactly which part we're talking about in our setup guide.



**MAKE SURE YOU  
REGISTER YOUR EXTENDED  
10 YEAR WARRANTY AT  
[WWW.MYDLUX.COM](http://WWW.MYDLUX.COM)**

## IN THE PACKAGE YOU WILL FIND:

21 x MAGNETIC LOCK



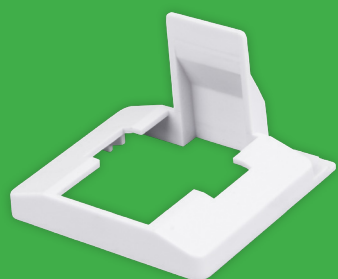
3 x KEY



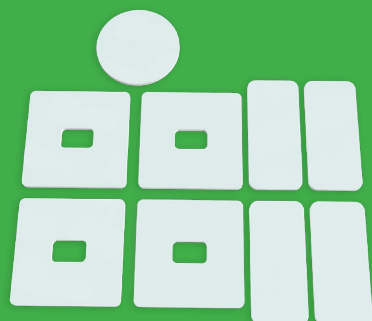
21 x LATCH



1 x INSTALLATION  
DEVICE



12 x EXTRA TAPE



3 x KEY DOCK



  
**Keep Your  
Kids Safe**





# INSTRUCTIONS

DLUX™  
Baby

## STEP-BY-STEP INSTRUCTIONS FOR INSTALLING THE MAGNETIC SAFETY CABINET LOCKS

### HOW TO USE THE KEY DOCK



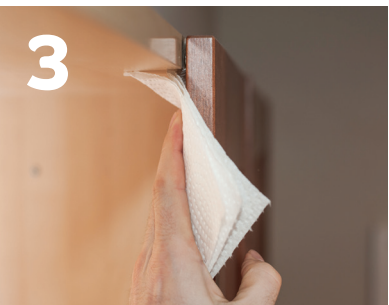
Find a place that is out of your baby's reach to stick the key dock. Keep your magnetic key on the dock when not in use.



1 Identify a suitable location to lock. Mark location with pencil where the lock will be installed.



2 Clean the space where the latch will be positioned in the drawer or cupboard.



3 Clean the space where the lock will be positioned on the cabinet door.



4 Line up the thin part of the latch with the edge of the cabinet.



5 Take off the adhesive cover from the latch and install it flush with the cabinet edge and in the center of the pencil mark.



6 Take out a magnetic lock. Flick the lever down to open the hook and put the lock in the LOCKED position.



7 Try steps 8-9 with the lock's adhesive cover still on. When you are sure about the placement of the lock, remove its adhesive cover and proceed with steps 8-9.



8 Line up the lock to engage with the latch. This will be the lock's final position once installed.



9 Close the cabinet door so that it makes contact with the lock's adhesive. Push the lock into the door with one hand, and the door into the lock with the other.



10 For maximum hold, put the lock in the UNLOCKED position and allow the adhesive to cure for 24 hours before using.



11 To test the lock, put the lock in the LOCKED position with the cabinet door closed. Hold the key away about 2 inches from the cabinet door.



12 As you move the key closer to the door, the hook will drop down and you will be able to open the cabinet door again.

DLUX™  
Baby

## STEP-BY-STEP INSTRUCTIONS FOR INSTALLING THE REPLACEMENT TAPES



1 Remove cover on the back of the adhesive.



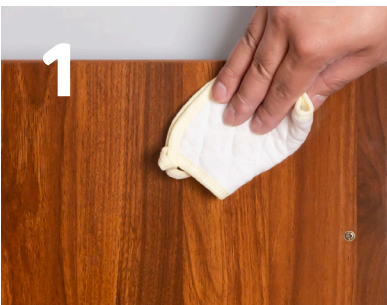
2 Stick the replacement adhesive directly over the old adhesive that has lost its stickiness. The second option is to take a knife and remove the original adhesive from that magnetic lock or latch that you want to reposition.



3 Remove the cover from the adhesive and stick the lock where you would want it to be positioned on the cabinet door.

DLUX™  
Baby

## STEP-BY-STEP INSTRUCTIONS FOR USING THE INSTALLATION DEVICE



1 Clean cabinet thoroughly with a soapy cloth. When dry - clean with alcohol cloth/wipe. Let dry completely.



2 Install the lock on the installation tool



3 Install the latch on installation tool



4 Remove paper backings from both lock and latch



5 To determine a good location to install the lock, place it on the cabinet's edge and make sure they are both edges are parallel



6 Hold the lock in place and close the cabinet door until the lock rests against the back of the cabinet lock



7 Take the installation tool down from the latch



8 Test the lock by placing a magnetic key on the door front. After 24 hours your lock is ready to use