

DLUXTM Baby

#1 BABY SAFETY KIT

NOW WITH SCREW HOLES JUST IN CASE YOUR CHILD IS HERCULES!

**NEW
ADHESIVE
ULTRA STRENGTH
ACRYLIC TAPE**



It's important to choose a suitable place to install the locks, so look at this image to see some examples. To optimize the strength of the locking mechanism, the best place to install the locks is at about 1 inch from the edge of the drawer or cupboard door.

You can use magnetic safety locks here

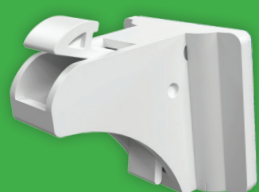
Thank you for purchasing our #1 Baby Safety Kit, which is comprised of 12 magnetic cabinet locks with 2 keys, 4 BONUS corner guards and replacement EXTRA Strength Acrylic Tape in case the locks ever need to be repositioned. We want all of our customers to have a 5-star experience with our products so we put these instructions together to make setting up the locks and corner guards as quick and easy as possible. Take a look at the pictures below to know exactly which part we're talking about in our setup guide.



**MAKE SURE YOU
REGISTER YOUR EXTENDED
10 YEAR WARRANTY AT
WWW.MYDLUX.COM**

IN THE PACKAGE YOU WILL FIND:

**12 x MAGNETIC
LOCK**



2 x KEY



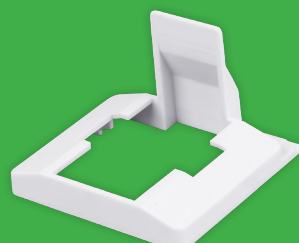
**2 x KEY
DOCK**



12 x LATCH



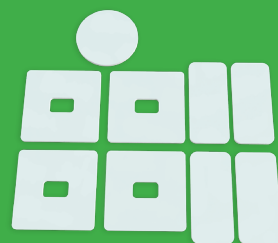
**1 x INSTALLATION
DEVICE**



**4 x CORNER
GUARD**



9 x EXTRA TAPE

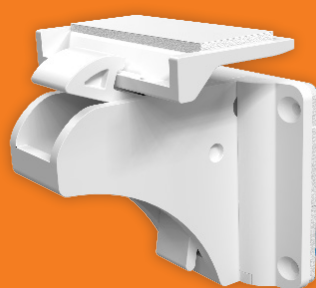


**Keep Your
Kids Safe**



OPTIONALLY / ADDITIONALLY, YOU CAN ALSO PURCHASE:

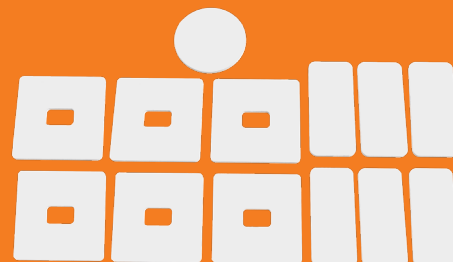
2 x LOCK + LATCH



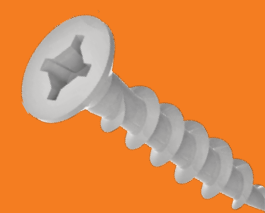
**2 x EXTRA STRENGTH
KEY + KEY DOCK**



**13 x EXTRA
STRENGTH TAPE**



72 x SCREW



**8 x CORNER
GUARD**



DLUX™
Baby

STEP-BY-STEP
INSTRUCTIONS FOR INSTALLING
THE MAGNETIC SAFETY
CABINET LOCKS

HOW TO USE
THE KEY DOCK



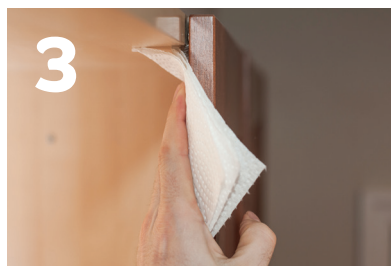
Find a place that is out of your baby's reach to stick the key dock. Keep your magnetic key on the dock when not in use.



1 Identify a suitable location to lock. Mark location with pencil where the lock will be installed.



2 Clean the space where the latch will be positioned in the drawer or cupboard.



3 Clean the space where the lock will be positioned on the cabinet door.



4 Line up the thin part of the latch with the edge of the cabinet.



5 Take off the adhesive cover from the latch and install it flush with the cabinet edge and in the center of the pencil mark.



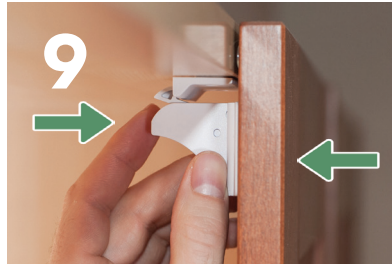
6 Take out a magnetic lock. Flick the lever down to open the hook and put the lock in the LOCKED position.



7 Try steps 8-9 with the lock's adhesive cover still on. When you are sure about the placement of the lock, remove its adhesive cover and proceed with steps 8-9.



8 Line up the lock to engage with the latch. This will be the lock's final position once installed.



9 Close the cabinet door so that it makes contact with the lock's adhesive. Push the lock into the door with one hand, and the door into the lock with the other.



10 IMPORTANT: For maximum hold, put the lock in the UNLOCKED position and allow the adhesive to cure for 24 hours before using.



11 To test the lock, put the lock in the LOCKED position with the cabinet door closed. Hold the key away about 2 inches from the cabinet door.



12 As you move the key closer to the door, the hook will drop down and you will be able to open the cabinet door again.

DLUX™
Baby

STEP-BY-STEP
INSTRUCTIONS FOR INSTALLING
THE REPLACEMENT TAPES



1 OPTIONAL: Take an exacto knife and remove the original adhesive from the magnetic lock or latch that is not sticking well enough. You might have to finish the job by rubbing your fingers on the remains to make it smooth. Or just leave the old adhesive there.



2 Remove the cover from the back of the new the replacement adhesive you will be using.



3 Stick the replacement adhesive directly over the old tape that has lost its stickiness (or directly on the lock if you removed the old adhesive in step 1).



4 Press firmly on the newly installed adhesive to make sure it's well attached. Remove the cover from the newly installed adhesive and stick the lock where you would want it to be positioned. For best results, let it cure for 24 hours.

DLUX™
Baby

STEP-BY-STEP
INSTRUCTIONS FOR INSTALLING
THE CORNER GUARDS



1 Pick a suitable corner that needs to be covered. Make sure it's not rounded.



2 Clean the surface of the corner you want to cover.



3 Remove the 3 adhesive covers. Position the corner guard on the corner, and press firmly on each side.



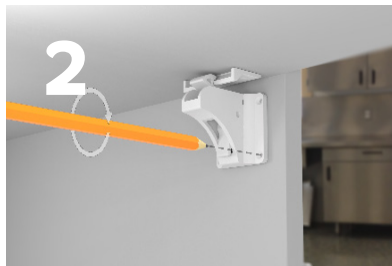
4 This is how the final setup should look.

DLUX™
Baby

(OPTIONAL)
STEP-BY-STEP
INSTRUCTIONS FOR INSTALLING
THE MAGNETIC SAFETY
CABINET LOCKS USING SCREWS



1 Align the lock and latch at the desired position. For steps 2 and 3, either hold them with your hand or stick them lightly temporarily.



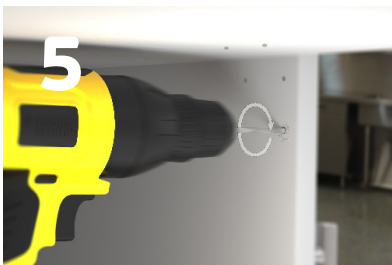
2 Mark the lock's 4 pilot holes with a pencil.



3 Mark the latch's 2 pilot holes with a pencil.



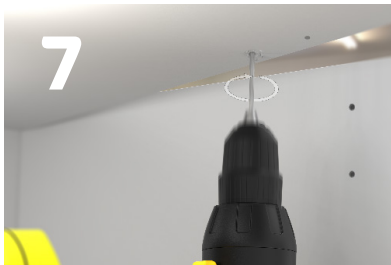
4 Put away the lock and latch, and get a wood drill bit with a 0.5mm (1/32") diameter.



5 Drill the 4 lock pilot holes 3-5mm (1/8"-3/16") deep. Make sure you don't drill too deep!



6 Once you are done drilling the holes for the lock, it's time to drill holes for the latch.



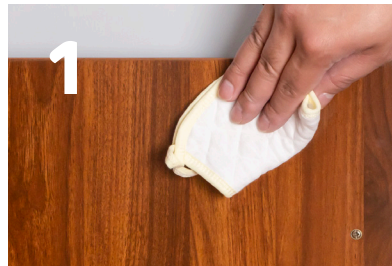
7 Drill the 2 latch pilot holes 3-5mm (1/8"-3/16") deep. Make sure you don't drill too deep!



8 Optionally, remove the stickers from the latch and lock. Screw the lock and latch into place.

DLUX™
Baby

STEP-BY-STEP
INSTRUCTIONS FOR USING
THE INSTALLATION DEVICE



1 Clean cabinet thoroughly with a soapy cloth. When dry - clean with alcohol cloth/wipe. Let dry completely.



2 Install the lock on the installation tool



3 Install the latch on installation tool



4 Remove paper backings from both lock and latch



5 To determine a good location to install the lock, place it on the cabinet's edge and make sure they are both edges are parallel



6 Hold the lock in place and close the cabinet door until the lock rests against the back of the cabinet lock



7 Take the installation tool down from the latch



8 Test the lock by placing a magnetic key on the door front. After 24 hours your lock is ready to use